

# OPM - Criminal Justice Policy & Planning Division Monthly Indicators Report

## Highlights

- As expected, the state’s prison population grew during the month of January. On February 1<sup>st</sup> there were 13,444 inmates in Connecticut prisons and jails, 216 more than the month prior.
- In January, 399 sentenced inmates were admitted to the DOC (see chart 2). Last year there were 355 sentenced-admits during the month. This surge in sentenced admits drives what has become known as the ‘January bump’. In recent years, the number of sentenced inmates admitted during January has been decreasing. In a reverse to an almost a decade-long trend, more sentenced prisoners were admitted this January than last year.
- During the month of January, the sentenced population experienced its largest month-on-month increase, in percentage terms (+2.85%), since 2007.
- OPM will release its 2019, annual recidivism report this month. In this cycle, OPM will report in recidivism rates among pre-trial detainees who were admitted in 2014.
- The state’s sentenced prison population has contracted by a third since 2000. The drop in the number of inmates serving less than five years accounted for most of this drop. In 2000, 9,672 prisoners were serving sentences of less than 5 years. In 2018 that number dropped to 5,105. (see chart 2a)
- The Lamont administration has committed itself to criminal justice reforms. OPM CJPPD will work to benchmark and monitor the impact of these proposals across the criminal justice system.

## Prison Population Forecast

As mentioned in this space last month, OPM released a new forecast of the prison population for 2019. This projection estimates what the prison population should look like if the forces that impact the prison system continue to operate at existing levels. On a February-to-February basis, the OPM’s forecast anticipates that the prison population will decline by about 310 prisoners or 2.3% over the coming year.

There are many factors that OPM considers in its projections. At the front-of-the-system, reported crime, arrests and overall prison admissions are down. Fewer new people are entering the state’s prison system each year and there are many fewer young people incarcerated today than there were in years past. At the back end of the system, there is also less activity. Between 2017 and 2018, the number of total releases and discharges from prison declined, in effect braking the rate of contraction in the prison population.

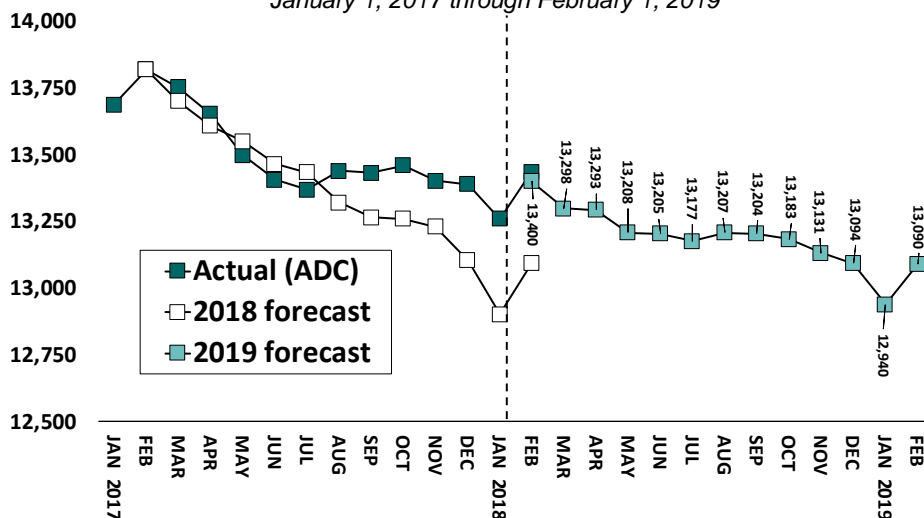
TABLE 1 – Prison Population Forecast

	Avg. Daily Count	OPM 2019 Forecast	Inmate difference
JAN '19	13,259	-	-
FEB	13,436	13,400	-
MAR		13,298	-
APR		13,293	-
MAY		13,208	-
JUN		13,205	-
JUL		13,177	-
AUG		13,207	-
SEP		13,204	-
OCT		13,183	-
NOV		13,131	-
DEC		13,094	-
JAN '20		12,940	-
FEB		13,090	-

*Avg. Daily Count (ADC) for 1st week of month*

Early indications suggest 2019 will track much like 2018. So far, arrests and prison admits are only modestly lower than last year. Releases and discharges are continuing to slow from their previous pace. Taken together these two forces strongly portend moderate contraction in the size of the prison system.

Chart 1 – Actual prison population against the OPM forecasts  
January 1, 2017 through February 1, 2019



## Chart 2 - Criminal justice, monthly counts and flows

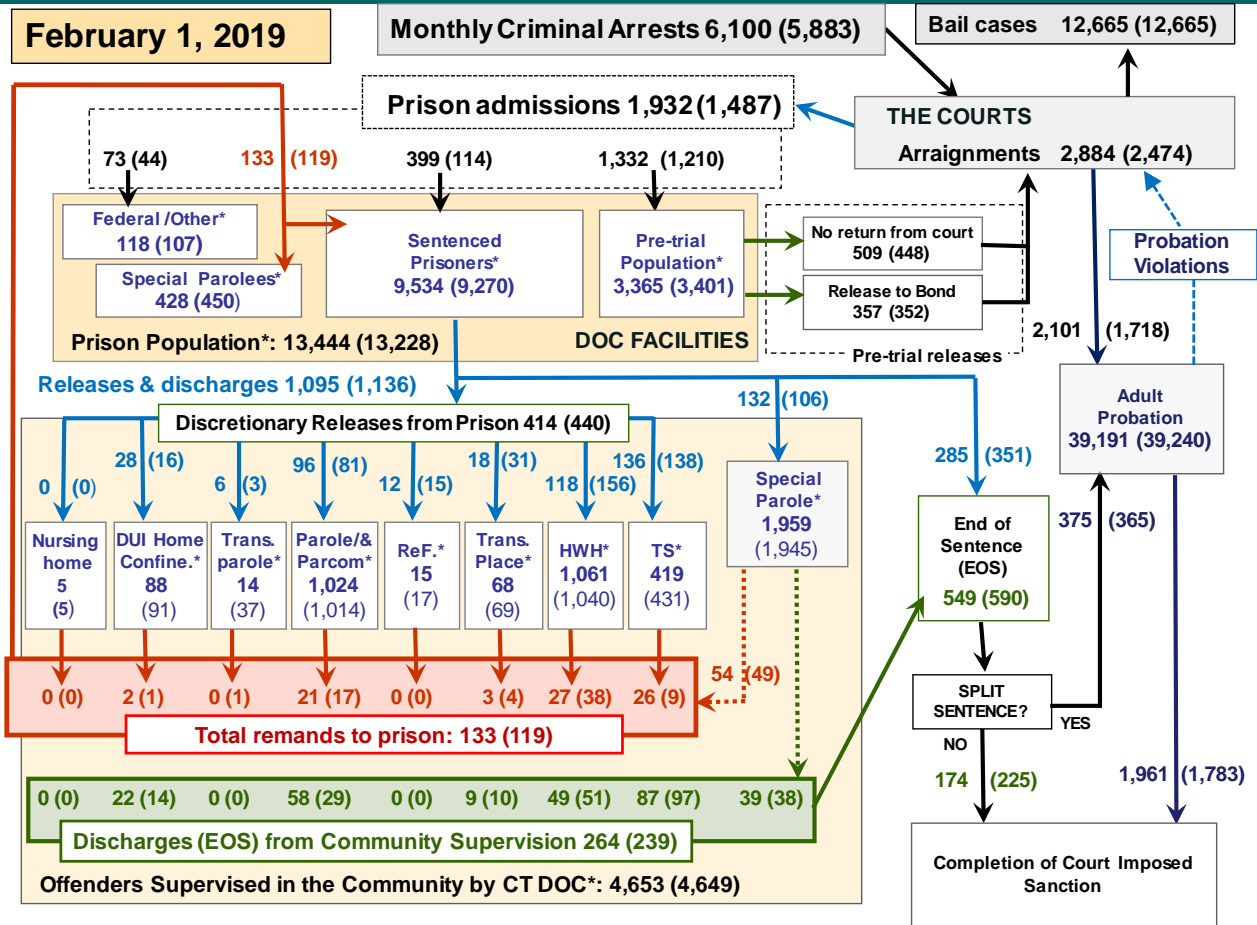
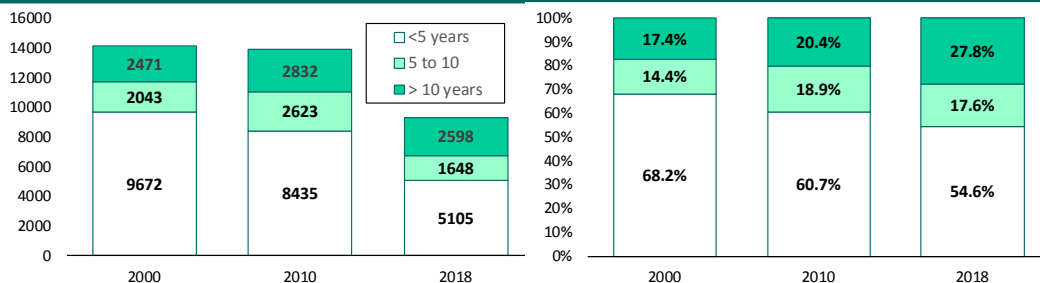


Chart 2 contains monthly operations data for January 2019 and daily counts reported on Feb. 1, 2019. Asterisks (\*) indicate the daily count on Feb. 1<sup>st</sup>. Figures for last month are enclosed by parentheses. Sources: Arrests – CRMVS, Court and probation data - CSSD, all other data - CT DOC. Note: Some Judicial Branch data this month is estimated.

## Chart 2a – Changes in the sentenced population, 2000 through 2018



Between 2000 and 2018, the total number of sentenced inmates in CT declined by 34%. This decline, however, did not impact all groups of sentenced prisoners equally. The largest drops were associated with prisoners serving sentences of less than 5 years. The number of these prisoners dropped by 47%, from 9,672 to 5,105.

In 2000, 31.8% of sentenced prisoners in CT were serving terms of incarceration of 5 years or longer. By 2018, the percentage of offenders serving these longer sentences had increased by almost 50% to 45.4% of the sentenced population. It is important to note, however, that while the percentage of prisoners serving long sentences increased

dramatically, the actual number of prisoners serving these longer sentences dropped from 4,514 to 4,246 during that 18-year window.

Chart 2a illustrates that most of the observable contraction in the State's sentenced-prison population occurred after 2010. In fact 93% of the entire contraction in the sentenced population between 2000 and 2018 occurred after 2010. It is interesting to note that the number of prisoners serving sentences of over 5 years in length grew by 20% between 2000 and 2010. The increase in longer sentences may reflect the sentencing guidelines and policies that contributed to over-incarceration.

**Table 2 - First-of-month totals**

	2018		2019		2018		% Change	
	Dec. 1	Jan. 1	Feb. 1	Feb. 1	Monthly	Annual		
<b>DOC Facilities</b>								
Federal/Other	105	107	118	134	10.3%	-11.9%		
Sentenced	9,504	9,270	9,534	9,970	2.8%	-4.4%		
Special Parole	449	450	428	470	-4.9%	-8.9%		
Pre-trial	3,338	3,401	3,365	3,243	-1.1%	3.8%		
<b>Total</b>	<b>13,396</b>	<b>13,228</b>	<b>13,445</b>	<b>13,817</b>	<b>1.6%</b>	<b>-2.7%</b>		
<b>DOC Community</b>								
Transfer Parole	42	37	14	30	-62.2%	-53.3%		
Parole/ Parcom Total	1,036	1,014	1,024	1,036	1.0%	-1.2%		
Parole	859	844	857	876	1.5%	-2.2%		
Parcom @ CT	177	170	167	160	-1.8%	4.4%		
Furlough	6	17	15	42	-	-		
Trans Placement	57	69	68	56	-1.4%	21.4%		
DUI/Home confine.	92	91	88	79	-3.3%	11.4%		
Halfway House Total	1,028	1,040	1,061	1,064	2.0%	-0.3%		
Comm Release	485	509	514	538	1.0%	-4.5%		
TS	25	23	28	60	21.7%	-53.3%		
Parole	153	162	163	159	0.6%	2.5%		
Transfer Parole	5	6	2	1	-	-		
Special Parole	360	340	354	306	4.1%	15.7%		
TS	425	431	419	524	-2.8%	-20.0%		
Nursing home	5	5	5	6	-	-		
Special Parole	1,936	1,945	1,959	1,837	0.7%	6.6%		
<b>Total</b>	<b>4,627</b>	<b>4,649</b>	<b>4,653</b>	<b>4,674</b>	<b>0.1%</b>	<b>-0.4%</b>		

**Table 2a - Monthly admissions, releases & discharges**

	2018		2019		2018		% Change	
	Nov.	Dec.	Jan.	Jan.	Monthly	Annual		
<b>Admissions</b>								
Federal/Other	55	44	73	59	65.9%	23.7%		
Remands	169	119	133	131	11.8%	1.5%		
DUI	3	2	2	4	-	-		
Parole	26	17	21	27	23.5%	-22.2%		
Trans Plac/Furlough	1	4	3	1	-	-		
HWH	45	38	27	33	-28.9%	-18.2%		
TS	21	9	26	19	188.9%	36.8%		
Special Parole	73	49	54	47	10.2%	14.9%		
New Sentence	220	114	399	355	250.0%	12.4%		
VOP	59	27	101	91	274.1%	11.0%		
Pre-trial	1,186	1,210	1,332	1,372	10.1%	-2.9%		
<b>Total</b>	<b>1,630</b>	<b>1,487</b>	<b>1,937</b>	<b>1,917</b>	<b>30.3%</b>	<b>1.0%</b>		
<b>Releases and discharges</b>								
Transfer Parole	6	3	6	3	-	-		
Parole	73	81	96	85	18.5%	12.9%		
Furlough	6	15	12	8	-	-		
Trans. Placement	13	31	18	25	-41.9%	-28.0%		
Home Confinement DUI	17	16	28	23	75.0%	21.7%		
HWH	136	156	118	149	-24.4%	-20.8%		
TS	137	138	136	157	-1.4%	-13.4%		
Special Parole	137	106	132	143	24.5%	-7.7%		
Nursing home	0	0	0	0	-	-		
End of Sentence	622	590	549	613	-6.9%	-10.4%		
<b>Total</b>	<b>1,147</b>	<b>1,136</b>	<b>1,095</b>	<b>1,206</b>	<b>-3.6%</b>	<b>-9.2%</b>		
<b>Pre-trial Releases*</b>								
From Court	443	448	509	464	1.1%	-3.4%		
Release to Bond	347	352	357	341	1.4%	3.2%		

\* Totals reflect events, not individual offenders

**DOC - Community Release Unit (CRU)**

**Table 3 - Case reviews and release metrics**

	Cases				Approval Rate
	Reviewed	Approved	Denied	Continued	
Nov.	667	286	95	102	43%
Dec.	610	281	99	105	46%
Jan. '19	695	332	106	101	48%
Jan. '18	684	324	117	92	47%

**Board of Pardons and Paroles**

**Table 4 - Parole hearings, new cases**

	Parole Hearings	Paroles granted	Grant rate	Paroles granted, 2017	Paroles granted, 2016
Nov.	159	74	47%	91	97
Dec.	140	74	53%	87	95
Jan. '19	117	65	56%	87	77

**Table 4a - Other BOPP actions**

	Reparole from revocation	Reparole from rescission	Closed interest cases	Special parole cases	Transfer parole cases
Nov.	37	1	15	28	2
Dec.	36	0	14	35	6
Jan. '19	43	2	28	18	15
Jan. '18	48	6	18	32	27

**The pre-trial population**

**Table 5 - Bond ranges for pre-trial detainees**

Bond amount	Dec. 1, 2018	Jan. 1, 2019	Feb. 1, 2019	Feb. 1, 2018
Less than \$20K	528	558	531	507
\$20K to < \$50K	518	502	467	452
\$50K to < \$100K	613	661	630	680
\$100K or higher	1,795	1,817	1,858	1,678
Persons w/bonds	3,454	3,538	3,486	3,317
Over \$1M	196	201	196	187

**Table 5a - Pre-trial, weeks since admission**

Weeks since last DOC admit	Dec. 1, 2018	Jan. 1, 2019	Feb. 1, 2019	Feb. 1, 2018
< 1 week	407	336	368	423
1 to < 3 weeks	279	373	331	357
3 to < 10 weeks	804	825	852	648
10 to < 30 weeks	1,020	1,038	1,008	1,028
30 wks or more	946	971	933	864
Pre-trial prisoners	3,456	3,543	3,492	3,320

**Table 5b - Pre-trial admits, new offenders**

	Nov. 2018	Dec. 2018	Jan. 2019	Jan. 2018
Arraignments	2,588	2,474	2,884	2,834
Pre-trial Admits	1,186	1,210	1,332	1,372
New to DOC	286	266	380	368
% New	24%	22%	29%	27%

**Court Support Services Division**

**Table 6 - The Jail Re-interview Program**

	Pre-trial admissions	Offender interviews	Offenders released	Released last year
Nov.	1,186	866	301	367
Dec.	1,210	832	303	330
Jan.'19	1,332	973	324	301

**Table 6a - Pre-trial bail and probation caseloads**

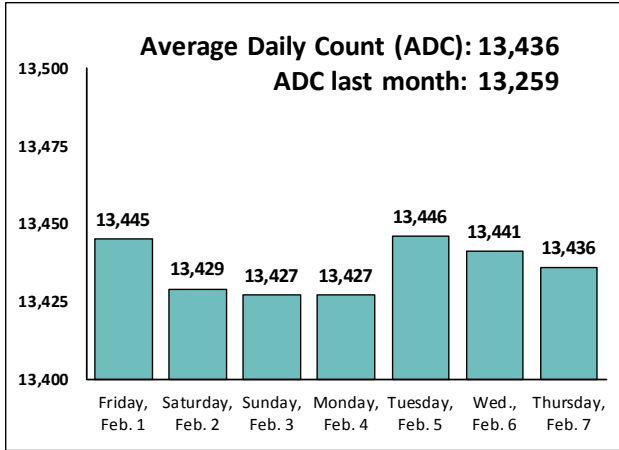
	Pre-trial Bail Case Starts	Client Supv. Starts	Split Sentence Starts	Pre-trial bail cases
Nov.	2,050*	1,816	362	12,665*
Dec.	2,050*	1,718	365	12,665*
Jan. '19	2,050*	2,101	375	12,665*
Jan. '18	2,090*	1,900	413	12,675*

\* CSSD estimates

Note: Figures published here are based on the operational data available at the time of publication. Data in subsequent issues may not agree.

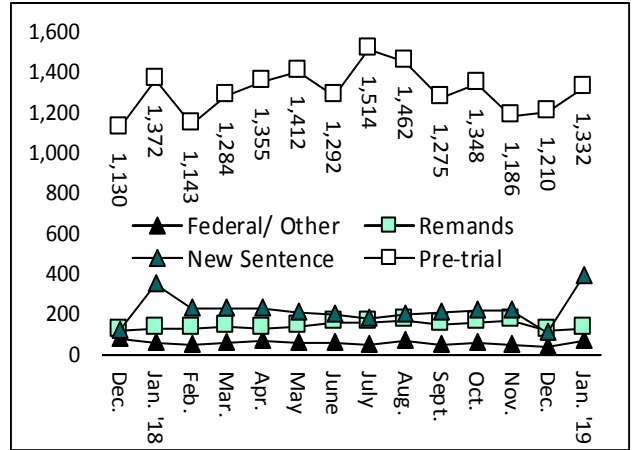
**Chart 3 – Prison population**

First week of the month, avg. daily count (ADC)



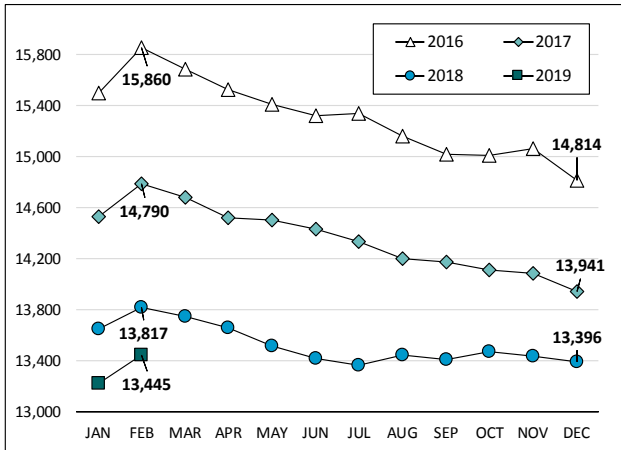
**Chart 6 – Monthly DOC Admissions**

Dec. 2017 through Jan. 2019



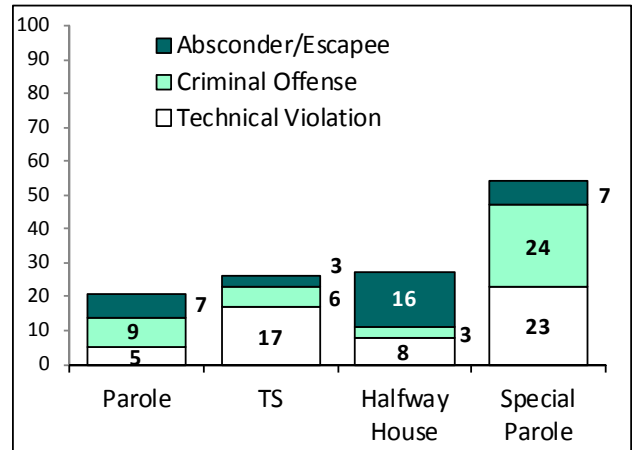
**Chart 4 – Prison population, first-of-month**

2016, 2017, 2018 and 2019



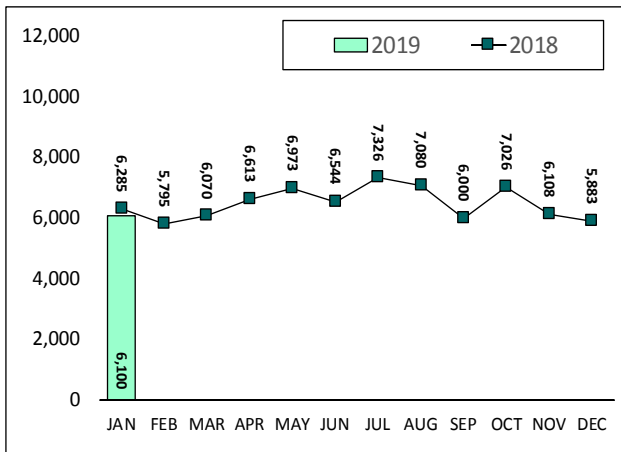
**Chart 7– Remands from community release**

January 2019



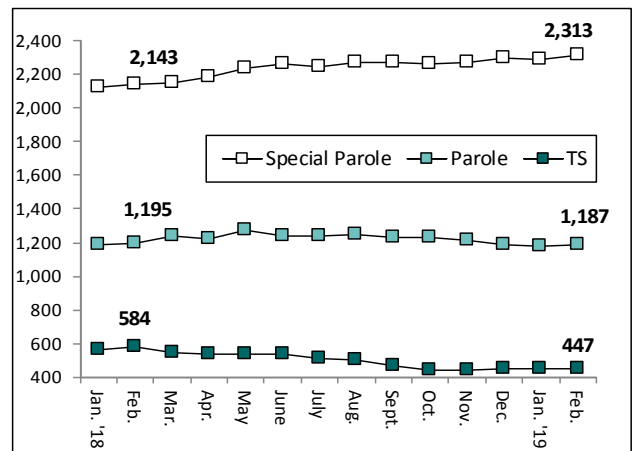
**Chart 5 – Statewide criminal arrests**

2018 and 2019



**Chart 8 – DOC community supervision**

Jan. 1, 2018 through Feb. 1, 2019



Note: Data for all charts, with the exception of Chart 5, was supplied by CT DOC. Data for Chart 5 are for new case starts in the state Criminal Motor Vehicle System (CRMVS). Chart 8 includes offenders in halfway houses.