

OPM - Criminal Justice Policy & Planning Division

Monthly Indicators Report

Highlights

- On April 1st there were 13,220 inmates in Connecticut prisons and jails, down 1% from March 1st. The decline predominantly resulted from a drop in the pretrial population.
- With the legislative session in full swing, this paper thought that it would be helpful to remind readers about some recent legislative changes and the impact, intended and otherwise on the pretrial population at the CT DOC. By restricting the court's use of cash-only bonds, legislation enacted in 2017 may have reconfigured the bond landscape among pretrial detainees at the CT DOC. See chart 2a for more.
- Following up on our Women in Jail study released last year, we have published a qualitative addendum to that report. Included, interested readers will find survey results based on thirty-three, in-depth interviews conducted by our staff at York CI. The report is available at the wonky url below: https://portal.ct.gov/-/media/OPM/CJPPD/CjAbout/SAC-Documents-from-2018-and-2019/Women-in-Jail-Interview-Notes_FINAL-_20190319KSB.pdf?la=en
- For the first time since May 1997 the total number of offenders under the CT DOC's supervision (which includes all inmates in facilities as well as those supervised in the community) is below 18,000. Remarkably, this is possible in spite of roughly, 2400 special parolees under DOC supervision. Special parole legislation was passed in 1998.

Prison Population Forecast

Last month, the prison population shrank slightly faster than OPM predicted in its February 2019 forecast. The month of April was once an inflection point on annual trendlines of the prison population. Prior to 2016, the prison population declined from its peak in early February through the end of March. It was relatively uncommon to see the prison population either grow or contract dramatically between April and September. Since 2016 the trendlines have fallen throughout the calendar year with an abrupt change in June 2018.

Chart 1 illustrates the actual prison population trendline during 2018. Falling through spring, as predicted, the prison population kept dropping from its peak in February until stymied in June.

The hard stop in June 2018 is directly related to a sudden slowing in the sentenced population's decline. Last April, the sentenced population was 8 percent lower than in 2017. This April, it has only fallen about 3 percent, year-on-year.

The decline in the sentenced population now more directly reflects the decline visible in most criminal justice metrics. This suggests a system operating in a stable manner. OPM's prior forecasts, 2016 and 2017 specifically assumed the system would operate in a stable manner, but underestimated the impacts of internal, hard to quantify changes that shortened the length of stay of sentenced offenders.

TABLE 1 – Prison Population Forecast

	Avg. Daily Count	OPM 2019 Forecast	Inmate difference
JAN '19	13,259	-	-
FEB	13,436	13,400	-
MAR	13,352	13,298	-54
APR	13,247	13,293	46
MAY		13,208	-
JUN		13,205	-
JUL		13,177	-
AUG		13,207	-
SEP		13,204	-
OCT		13,183	-
NOV		13,131	-
DEC		13,094	-
JAN '20		12,940	-
FEB		13,090	-

Avg. Daily Count (ADC) for 1st week of month

Chart 1 – Actual prison population against the OPM forecasts
January 1, 2017 through February 1, 2019

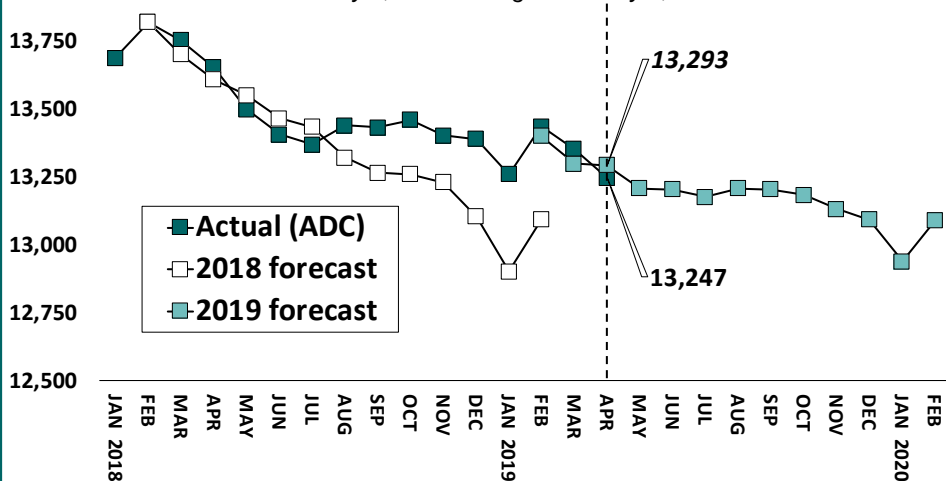


Chart 2 - Criminal justice, monthly counts and flows

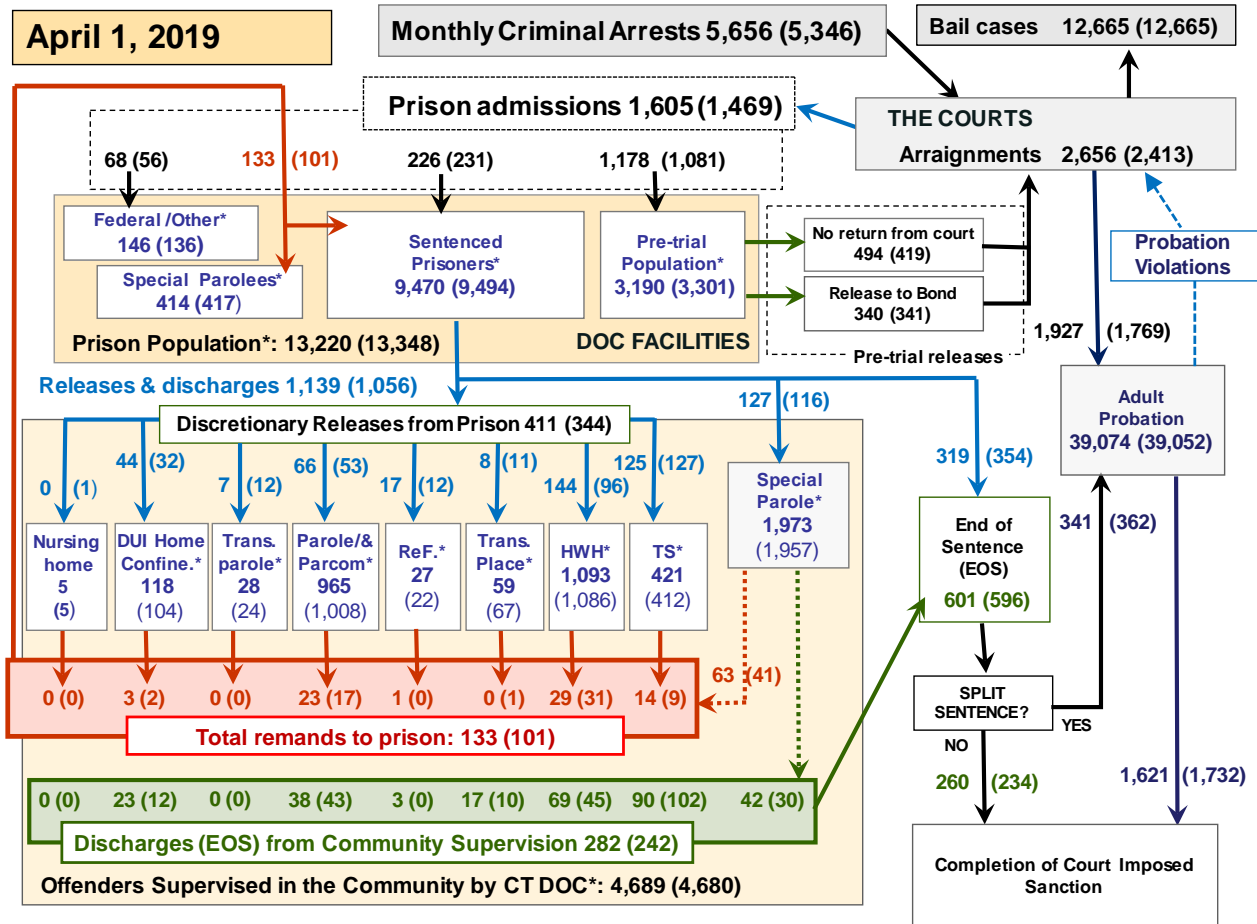
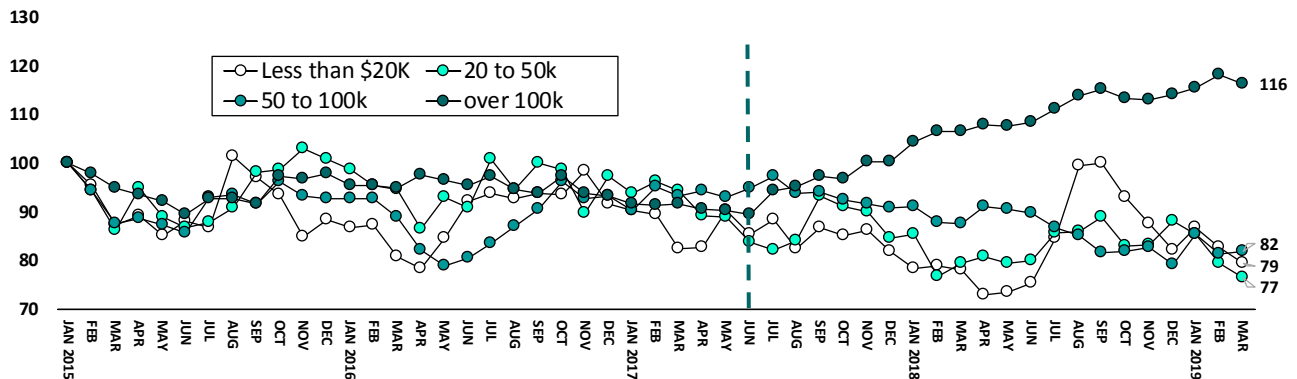


Chart 2 contains monthly operations data for March 2019 and daily counts reported on Apr. 1, 2019. Asterisks (*) indicate the daily count on Apr. 1st. Figures for last month are enclosed by parentheses. Sources: Arrests – CRMVS, Court and probation data - CSSD, all other data - CT DOC. Note: Some Judicial Branch data this month is estimated.

Chart 2a – Changes to bail policy and the pretrial population



Public Act 17-145 took effect on July 2017. The legislation sought to reduce the number of pretrial offenders held in the DOC on relatively low, cash-only bonds. The chart above reflects the change since January 2015 in the number of pretrial detainees by bond amount. The dashed vertical line shows when changes to bond policy went into effect. Prior to the change in policy, different bond ranges moved roughly in the same pattern.

Since the policy change, those held on higher bonds has grown steadily. OPM

assumes that the growth reflects courts adapting to change. Where, under the old rules, a defendant would be held on a \$20,000 - cash only - bond, now a similar defendant would be held on a \$200,000 surety bond.

One lingering question, did the change to bail policy reduce the number of pretrial detainees held on bond at the DOC? Here is one statistic. Pretrial offenders held on bond - July 2017 – 3,150 vs April 2019 – 3,190.

Table 2 - First-of-month totals

	2018	2019	2019	2018	% Change	
	Feb. 1	Mar. 1	Apr. 1	Apr. 1	Monthly	Annual
DOC Facilities						
Federal/Other	118	136	146	123	7.4%	18.7%
Sentenced	9,534	9,494	9,470	9,818	-0.3%	-3.5%
Special Parole	428	417	414	460	-0.7%	-10.0%
Pre-trial	3,365	3,301	3,190	3,255	-3.4%	-2.0%
Total	13,445	13,348	13,220	13,656	-1.0%	-3.2%
DOC Community						
Transfer Parole	14	24	28	20	16.7%	40.0%
Parole/ Parcom Total	1,024	1,003	965	1,088	-3.8%	-11.3%
Parole	857	835	795	927	-4.8%	-14.2%
Parcom @ CT	167	168	170	161	1.2%	5.6%
Furlough	15	22	27	9	-	-
Trans Placement	68	67	59	58	-11.9%	1.7%
DUI/Home confine.	88	104	118	86	13.5%	37.2%
Halfway House Total	1,061	1,086	1,093	1,062	0.6%	2.9%
Comm Release	514	510	525	527	2.9%	-0.4%
TS	28	35	33	54	-5.7%	-38.9%
Parole	163	148	157	151	6.1%	4.0%
Transfer Parole	2	3	2	1	-	-
Special Parole	354	390	376	329	-3.6%	14.3%
TS	419	412	421	493	2.2%	-14.6%
Nursing home	5	5	5	7	-	-
Special Parole	1,959	1,957	1,973	1,824	0.8%	8.2%
Total	4,653	4,680	4,689	4,650	0.2%	0.8%

Table 2a - Monthly admissions, releases & discharges

	2018	2019	2019	2018	% Change	
	Jan.	Feb.	Mar.	Mar.	Monthly	Annual
Admissions						
Federal/Other	73	56	68	65	21.4%	4.6%
Remands	133	101	133	148	31.7%	-10.1%
DUI	2	2	3	5	-	-
Parole	21	17	23	28	35.3%	-17.9%
Trans Plac/Furlough	3	1	0	2	-	-
HWH	27	31	29	33	-6.5%	-12.1%
TS	26	9	14	22	55.6%	-36.4%
Special Parole	54	41	63	58	53.7%	8.6%
New Sentence	399	231	226	236	-2.2%	-4.2%
VOP	101	66	62	72	-6.1%	-13.9%
Pre-trial	1,332	1,081	1,178	1,284	9.0%	-8.3%
Total	1,937	1,469	1,605	1,733	9.3%	-7.4%
Releases and discharges						
Transfer Parole	6	12	7	17	-	-
Parole	96	53	66	97	24.5%	-32.0%
Furlough	12	12	17	10	-	-
Trans. Placement	18	11	8	25	-27.3%	-68.0%
Home Confinement DUI	28	32	44	39	37.5%	12.8%
HWH	118	96	144	130	50.0%	10.8%
TS	136	127	125	159	-1.6%	-21.4%
Special Parole	132	116	127	137	9.5%	-7.3%
Nursing home	0	1	0	0	-	-
End of Sentence	549	596	601	700	0.8%	-14.1%
Total	1,095	1,056	1,139	1,314	7.9%	-13.3%
Pre-trial Releases*						
From Court	509	419	494	448	17.9%	10.3%
Release to Bond	357	341	340	389	-0.3%	-12.6%

* Totals reflect events, not individual offenders

DOC - Community Release Unit (CRU)

Table 3 - Case reviews and release metrics

	Cases				Approval
	Reviewed	Approved	Denied	Continued	Rate
Jan. '19	695	332	106	101	48%
Feb.	636	290	85	97	46%
Mar.	737	341	113	115	46%
Mar. '18	713	344	101	107	48%

Board of Pardons and Paroles

Table 4 - Parole hearings, new cases

	Parole Hearings	Paroles granted	Grant rate	Paroles granted, 2017	Paroles granted, 2016
Jan. '19	117	65	56%	87	77
Feb.	138	83	60%	77	100
Mar.	134	71	53%	91	95

Table 4a - Other BOPP actions

	Reparole from revocation	Reparole from rescission	Closed interest cases	Special parole cases	Transfer parole cases
Jan. '19	43	2	28	18	15
Feb.	30	1	15	34	10
Mar.	52	0	33	22	26
Mar. '18	43	4	26	34	11

The pre-trial population

Table 5 - Bond ranges for pre-trial detainees

Bond amount	Feb. 1, 2019	Mar. 1, 2019	Apr. 1, 2019	Apr. 1, 2018
Less than \$20K	531	510	498	468
\$20K to < \$50K	467	450	428	475
\$50K to < \$100K	630	635	605	705
\$100K or higher	1,858	1,829	1,782	1,699
Persons w/bonds	3,486	3,424	3,313	3,347
Over \$1M	196	198	204	192

Table 5a - Pre-trial, weeks since admission

Weeks since last DOC admit	Feb. 1, 2019	Mar. 1, 2019	Apr. 1, 2019	Apr. 1, 2018
< 1 week	368	367	387	448
1 to < 3 weeks	331	277	319	313
3 to < 10 weeks	852	799	695	744
10 to < 30 weeks	1,008	1,026	994	924
30 wks or more	933	959	919	918
Pre-trial prisoners	3,492	3,428	3,314	3,347

Table 5b - Pre-trial admits, new offenders

	Jan. 2019	Feb. 2019	Mar. 2019	Mar. 2018
Arraignments	2,884	2,413	2,656	2,565
Pre-trial Admits	1,332	1,081	1,178	1,284
New to DOC	380	295	299	345
% New	29%	27%	25%	27%

Court Support Services Division

Table 6 - The Jail Re-interview Program

	Pre-trial admissions	Offender interviews	Offenders released	Released last year
Jan.'19	1,332	973	324	301
Feb.	1,081	827	325	311
Mar.	1,178	784	328	333

Table 6a - Pre-trial bail and probation caseloads

	Pre-trial Bail Case Starts	Client Supv. Starts	Split Sentence Starts	Pre-trial bail cases
Jan. '19	2,050*	2,101	375	12,665*
Feb.	2,050*	1,769	362	12,665*
Mar.	2,050*	1,927	341	12,665*
Mar. '18	2,085*	1,927	418	12,675*

* CSSD estimates

Note: Figures published here are based on the operational data available at the time of publication. Data in subsequent issues may not agree.

Chart 3 – Prison population

First week of the month, avg. daily count (ADC)

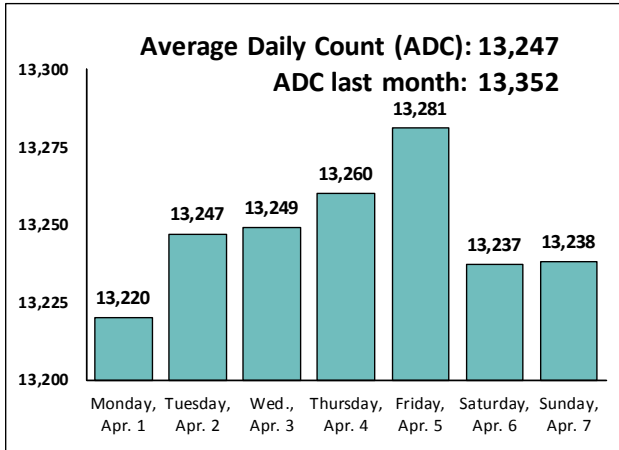


Chart 6 – Monthly DOC Admissions

Feb. 2018 through Mar. 2019

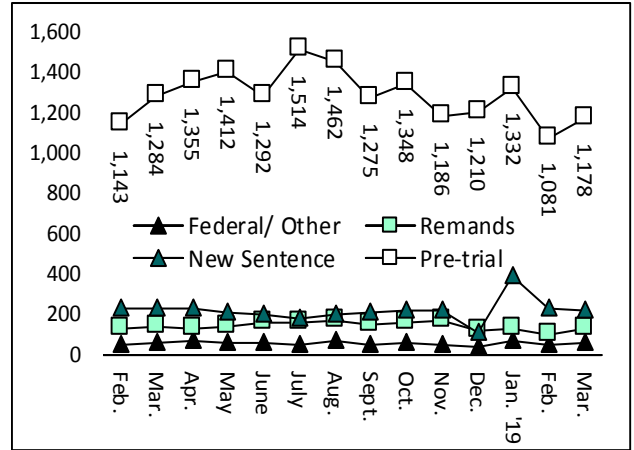


Chart 4 – Prison population, first-of-month

2016, 2017, 2018 and 2019

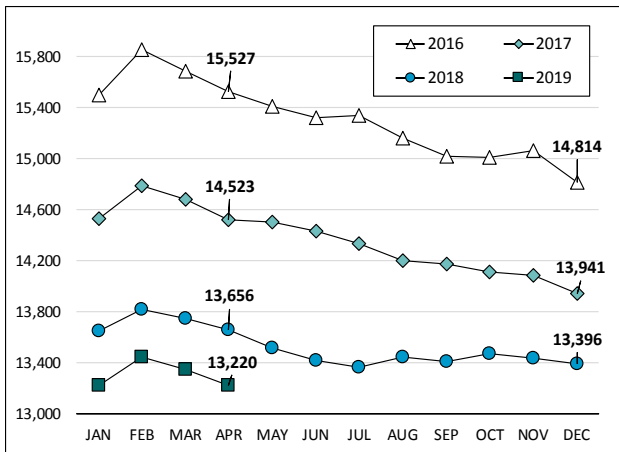


Chart 7 – Remands from community release

March 2019

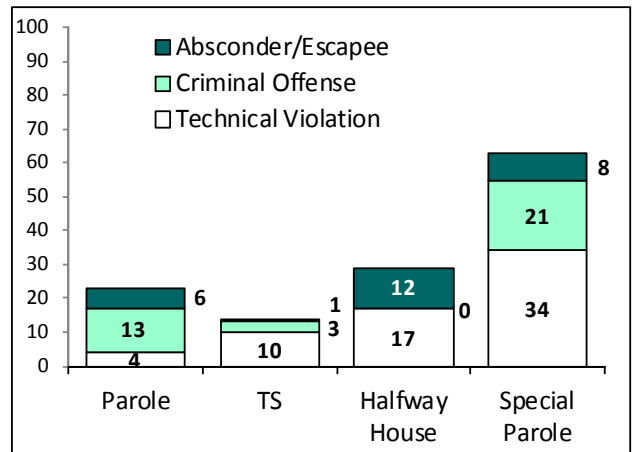


Chart 5 – Statewide criminal arrests

2018 and 2019

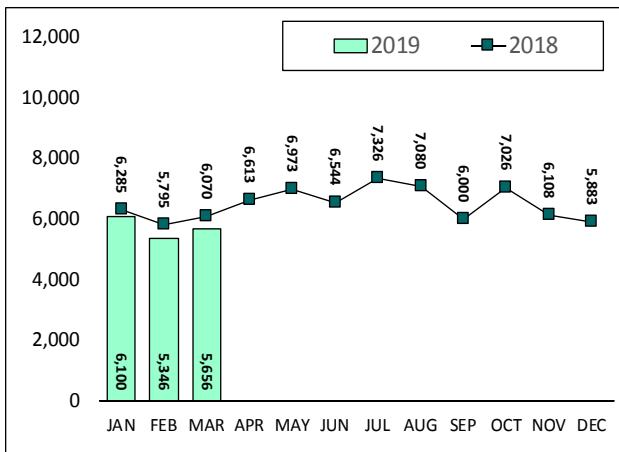
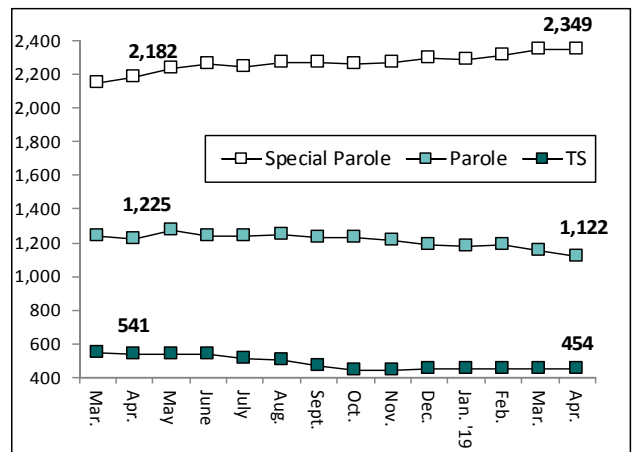


Chart 8 – DOC community supervision

Mar. 1, 2018 through Apr. 1, 2019



Note: Data for all charts, with the exception of Chart 5, was supplied by CT DOC. Data for Chart 5 are for new case starts in the state Criminal Motor Vehicle System (CRMVS). Chart 8 includes offenders in halfway houses.