

OPM - Criminal Justice Policy & Planning Division

Monthly Indicators Report

Highlights

- On September 1st, Connecticut's prisons and jails held 12,942 inmates, a drop of nearly 100 prisoners during the month of August.
- In 2019 the pretrial prison population has been a major driver of the prison population's overall decline. About one quarter of the total prison population, reductions in pretrial inmates account for nearly all of the decline in the prison system since January. There may be signs of a shift. Starting in July, the sentenced population shows signs of contraction.
- The pretrial prison population is down 9% year-over-year, but some groups are down more than others. Pretrial inmates whose length-of-stay is between two and eight weeks have shrunk faster than those staying longer. Those with lower bond amounts (less than 35k) are down 20%. (tables 5 and 5a)
- Statewide arrests are up compared to 2018 for the second consecutive month (chart 5). Arrests feed the criminal justice system, but other factors come into play. Despite 600 more criminal arrests in August 2019 vs 2018, there were about 100 fewer arraignments from lockup and 150 fewer pretrial admits, suggesting that more arrestees than last year are being diverted from prison between initial police contact and presentment at court.
- Chart 2a revisits the topic of accidental drug overdoses and the growing proportion of people dying with prior contact with the DOC.

Prison Population Forecast

The state's prison population contracted in both July and August. Although consecutive, month-over-month declines are unremarkable, the fact that the prison population fell during the late summer indicates how the dynamics of the prison population have shifted over the last decade. Until quite recently, the state's prison population would typically increase as temperatures climbed. In the previous two years, the prison population remained relatively flat through the summer. OPM's 2019 prison population forecast attempted mirror this trend. During August, the average daily count fell by 73 inmates; OPM had predicted a drop of only 3.

It is not clear whether the contraction we witnessed in July and August can be sustained through the end of the year. These contractions may be anomalous and the September data should provide us with a better gauge of where the population will trend through the fall and early winter.

With a daily count reliably below 13,000 at this point in the year it would not be unreasonable to argue that the prison population could settle in at around 12,700 by January 1, 2020. OPM

continues to closely monitor prison admits and releases and discharges. As we have acknowledged in the past, existing models based on historical population data are less and less reliable.

TABLE 1 – Prison Population Forecast

	Avg. Daily Count	OPM 2019 Forecast	Inmate difference
JAN '19	13,259	-	-
FEB	13,436	13,400	-
MAR	13,352	13,298	-54
APR	13,247	13,293	46
MAY	13,029	13,208	179
JUN	13,013	13,205	192
JUL	13,052	13,177	125
AUG	13,020	13,207	187
SEP	12,947	13,204	257
OCT		13,183	-
NOV		13,131	-
DEC		13,094	-
JAN '20		12,940	-
FEB		13,090	-

Avg. Daily Count (ADC) for 1st week of month

Chart 1 – Actual prison population against the OPM forecasts
January 1, 2017 through February 1, 2019

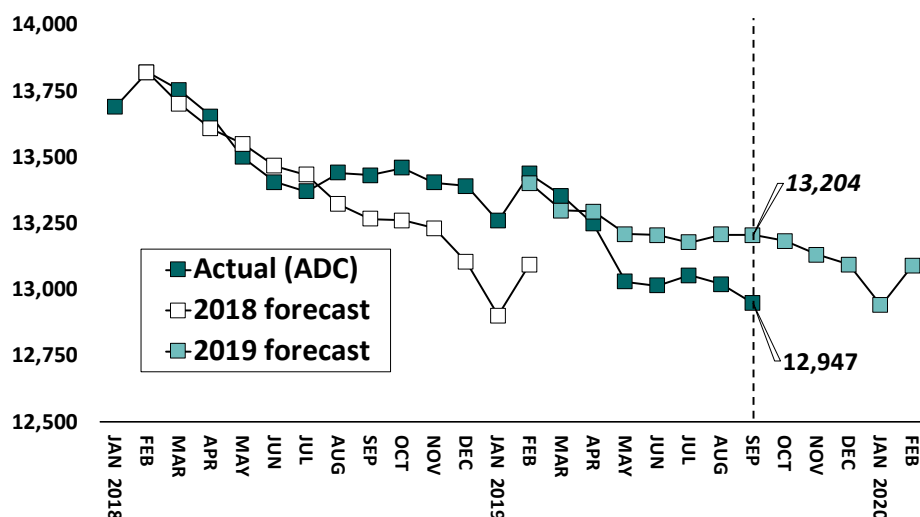


Chart 2 - Criminal justice, monthly counts and flows

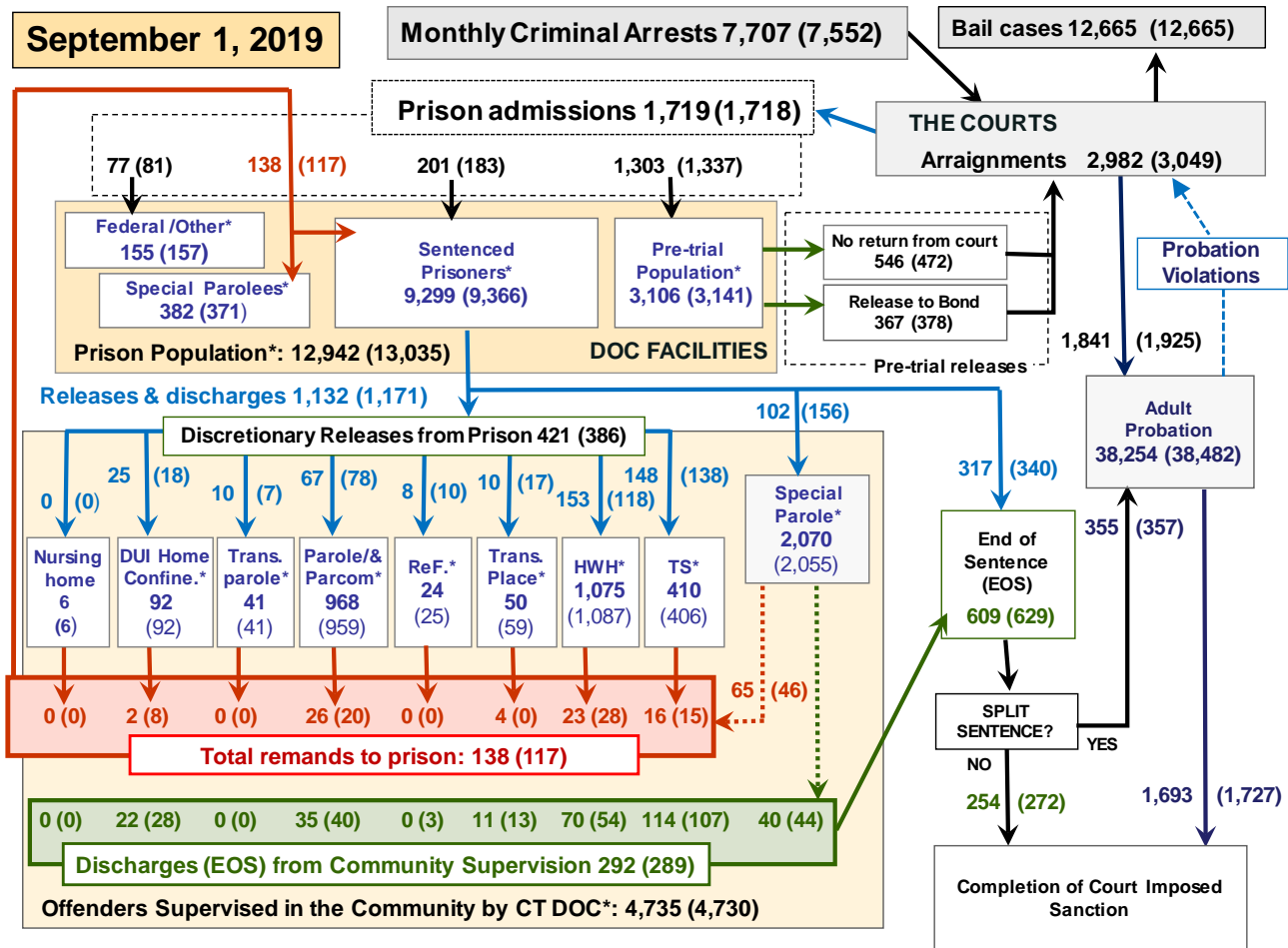
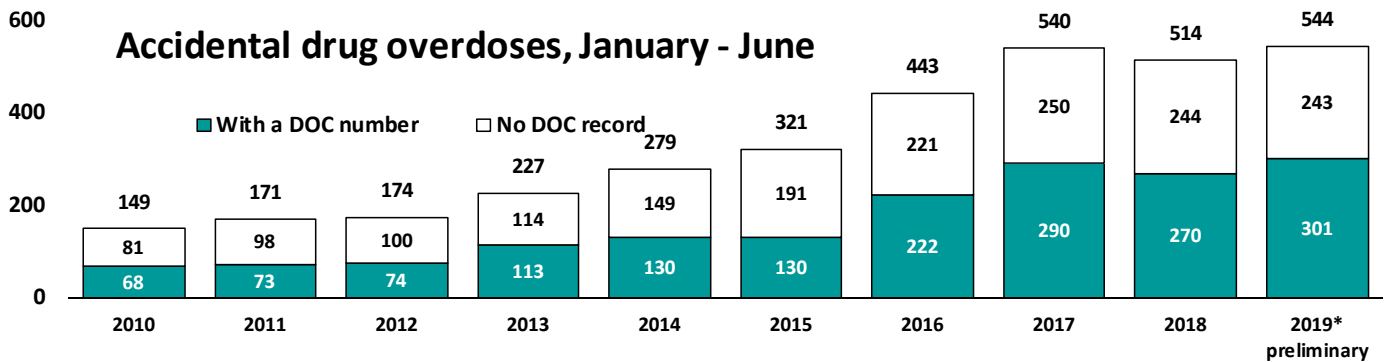


Chart 2 contains monthly operations data for August 2019 and daily counts reported on September 1, 2019. Asterisks (*) indicate the daily count on September 1st. Figures for last month are enclosed by parentheses. Sources: Arrests – CRMVS, Court and probation data – CSSD, all other data – CT DOC.

Chart 2a – Overdose deaths and CT prisoners - revisited



The Office of the Chief Medical Examiner recently announced that, based on data from the first half of the year, the number of fatal accidental drug deaths is expected to increase relative to last year.

The chart above tracks the number of overdose deaths through the first half of the year from 2010 to 2019. Deaths rapidly increase between 2012 and 2017, generally plateauing since.

Five years ago, OPM analyzed mortality data from the OCME and compared overdose deaths against DOC records. In 2014 OPM reported that 45% of those dying of an accidental drug overdose in Connecticut had, at one time, been issued a DOC inmate number.

Between 2010 and 2016, typically fewer than 50% of those who succumbed to a drug overdose had been issued a DOC number. Since 2016 that ratio has steadily increased, up to 55% in 2019.

Table 2 - First-of-month totals

	2019	2019	2019	2018	% Change	
	July 1	Aug. 1	Sept. 1	Sept. 1	Monthly	Annual
DOC Facilities						
Federal/Other	163	157	155	121	-1.3%	28.1%
Sentenced	9,424	9,366	9,299	9,437	-0.7%	-1.5%
Special Parole	405	371	382	434	3.0%	-12.0%
Pre-trial	3,115	3,141	3,106	3,418	-1.1%	-9.1%
Total	13,107	13,035	12,942	13,410	-0.7%	-3.5%
DOC Community						
Transfer Parole	41	41	40	33	-2.4%	21.2%
Parole/ Parcom Total	964	959	968	1,102	0.9%	-12.2%
Parole	803	797	806	932	1.1%	-13.5%
Parcom @ CT	161	162	162	170	0.0%	-4.7%
Furlough	27	25	24	8	-	-
Trans Placement	58	59	50	64	-15.3%	-21.9%
DUI/Home confine.	114	92	92	101	0.0%	-8.9%
Halfway House Total	1,054	1,087	1,075	1,032	-1.1%	4.2%
Comm Release	465	472	497	524	5.3%	-5.2%
TS	43	35	27	32	-22.9%	-15.6%
Parole	157	164	145	133	-11.6%	9.0%
Transfer Parole	4	2	6	6	-	-
Special Parole	385	414	400	337	-3.4%	18.7%
TS	413	406	410	437	1.0%	-6.2%
Nursing home	7	6	6	6	-	-
Special Parole	2,021	2,055	2,070	1,935	0.7%	7.0%
Total	4,699	4,730	4,735	4,718	0.1%	0.4%

Table 2a - Monthly admissions, releases & discharges

	2019	2019	2019	2018	% Change	
	June	July	August	August	Monthly	Annual
Admissions						
Federal/Other	64	81	77	70	-4.9%	10.0%
Remands	136	117	138	177	17.9%	-22.0%
DUI	2	8	4	5	-	-
Parole	15	20	26	34	30.0%	-23.5%
Trans Plac/Furlough	2	17	4	1	-	-
HWH	34	28	23	37	-17.9%	-37.8%
TS	23	15	16	23	6.7%	-30.4%
Special Parole	60	46	65	76	41.3%	-14.5%
New Sentence	211	183	201	206	9.8%	-2.4%
VOP	65	66	69	64	4.5%	7.8%
Pre-trial	1,202	1,337	1,303	1,462	-2.5%	-10.9%
Total	1,613	1,718	1,719	1,915	0.1%	-10.2%
Releases and discharges						
Transfer Parole	6	7	10	7	-	-
Parole	68	78	67	103	-14.1%	-35.0%
Furlough	14	10	8	13	-	-
Trans. Placement	10	17	10	26	-41.2%	-61.5%
Home Confinement DUI	28	18	25	27	38.9%	-7.4%
HWH	80	118	153	175	29.7%	-12.6%
TS	119	138	148	147	7.2%	0.7%
Special Parole	108	156	102	123	-34.6%	-17.1%
Nursing home	1	0	0	0	-	-
End of Sentence	527	629	609	666	-3.2%	-8.6%
Total	961	1,171	1,132	1,287	-3.3%	-12.0%
Pre-trial Releases*						
From Court	451	472	546	540	15.7%	1.1%
Release to Bond	341	378	367	458	-2.9%	-19.9%

* Totals reflect events, not individual offenders

DOC - Community Release Unit (CRU)

Table 3 - Case reviews and release metrics

	Cases				Approval Rate
	Reviewed	Approved	Denied	Continued	
June	605	298	100	96	43%
July	711	312	125	115	44%
Aug.	767	338	140	128	44%
Aug. '18	719	341	117	101	47%

Note: Figures published here are based on the operational data available at the time of publication. Data in subsequent issues may not agree.

Board of Pardons and Paroles

Table 4 - Parole hearings, new cases

	Parole Hearings	Paroles granted	Grant rate	Paroles granted, 2018	Paroles granted, 2017
June	141	74	52%	62	84
July	140	62	44%	77	87
Aug	137	68	50%	73	70

Table 4a - Other BOPP actions

	Reparole from revocation	Reparole from rescission	Closed interest cases	Special parole cases	Transfer parole cases
June	30	1	20	31	1
July	44	2	17	36	13
Aug	29	2	14	21	6
Aug '18	33	2	28	30	9

The pre-trial population

Table 5 - Bond ranges for pre-trial detainees

Bond amount	July 1, 2019	Aug. 1, 2019	Sept. 1, 2019	Sept. 1, 2018
Less than \$20K	465	508	507	643
\$20K to <\$50K	435	449	456	523
\$50K to <\$100K	555	570	545	633
\$100K or higher	1,770	1,763	1,751	1,811
Persons w/bonds	3,225	3,293	3,259	3,612
Over \$1M	192	193	194	193

Table 5a - Pre-trial, weeks since admission

Weeks since last DOC admit	July 1, 2019	Aug. 1, 2019	Sept. 1, 2019	Sept. 1, 2018
< 1 week	386	437	411	417
1 to < 3 weeks	327	336	308	353
3 to < 10 weeks	727	739	770	932
10 to < 30 weeks	863	878	877	949
30 wks or more	925	903	893	961
Pre-trial prisoners	3,228	3,293	3,259	3,612

Table 5b - Pre-trial admits, new offenders

	June 2019	July 2019	Aug 2019	Aug. 2018
Arraignments	2,628	3,049	2,982	3,095
Pre-trial Admits	1,202	1,337	1,303	1,462
New to DOC	298	359	311	367
% New	25%	27%	24%	25%

Court Support Services Division

Table 6 - The Jail Re-interview Program

	Pre-trial admissions	Offender interviews	Offenders released	Released last year
June	1,202	990	324	334
July	1,337	974	324	325
Aug.	1,303	1,046	363	383

Table 6a - Pre-trial bail and probation caseloads

	Pre-trial Bail Case Starts	Client Supv. Starts	Split Sentence Starts	Pre-trial bail cases
June	2,050*	1,726	343	12,665*
July	2,050*	1,925	357	12,665*
Aug.	2,050*	1,841	355	12,665*
Aug. '18	2,050*	2,070	385	12,650*

* CSSD estimates

Chart 3 – Prison population

First week of the month, avg. daily count (ADC)

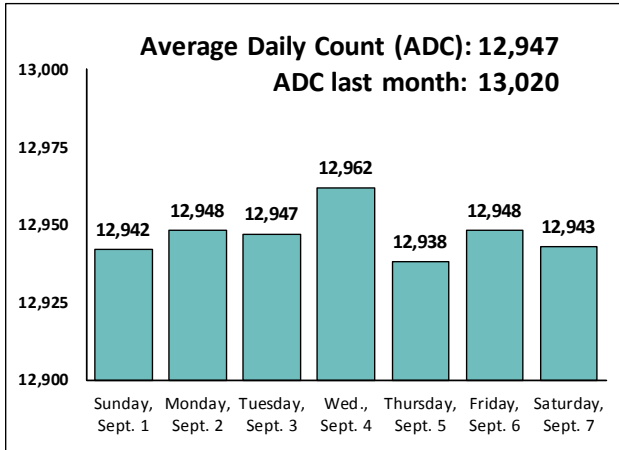


Chart 6 – Monthly DOC Admissions

July 2018 through August 2019

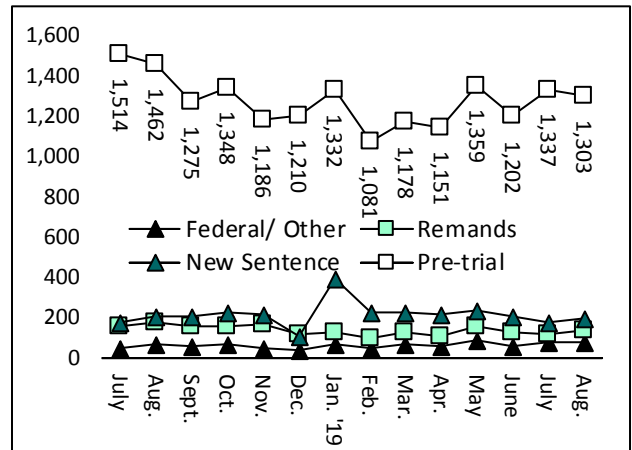


Chart 4 – Prison population, first-of-month

2016, 2017, 2018 and 2019

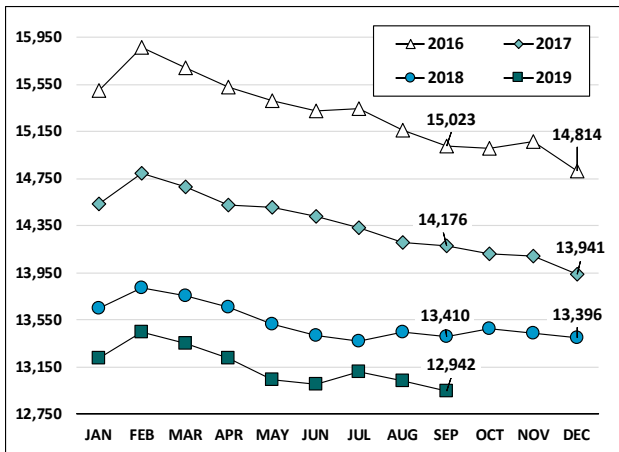


Chart 7– Remands from community release

August 2019

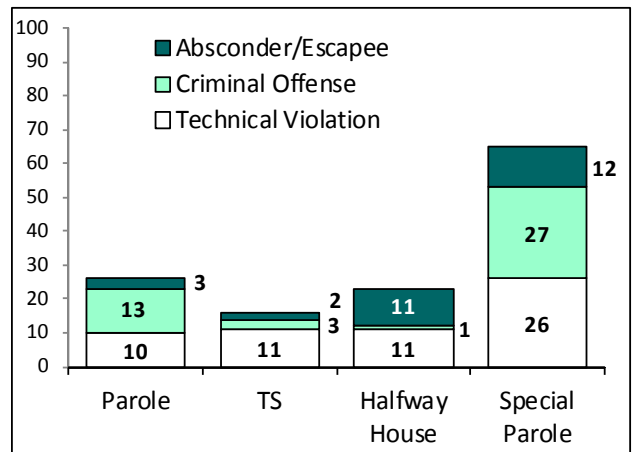


Chart 5 – Statewide criminal arrests

2018 and 2019

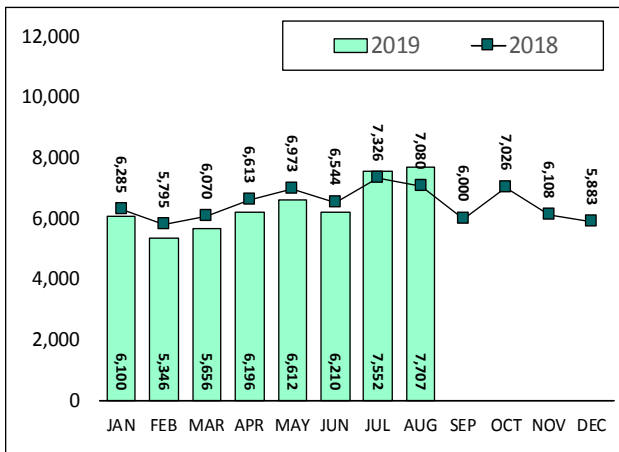
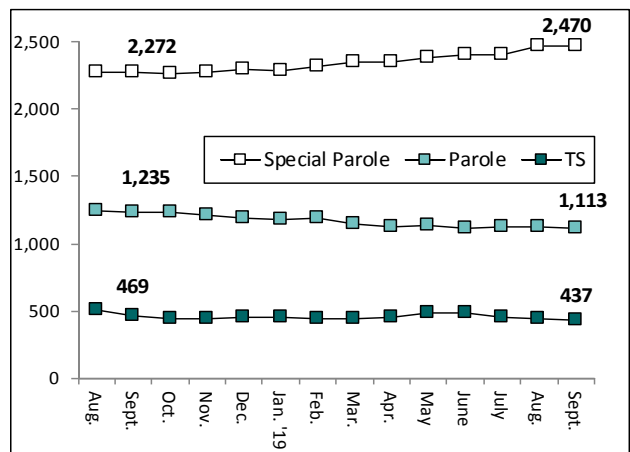


Chart 8 – DOC community supervision

Aug. 1, 2018 through Sept. 1, 2019



Note: Data for all charts, with the exception of Chart 5, was supplied by CT DOC. Data for Chart 5 are for new case starts in the state Criminal Motor Vehicle System (CRMVS). Chart 8 includes offenders in halfway houses.