

OPM - Criminal Justice Policy & Planning Division

Monthly Indicators Report

Highlights

- On February 1st, Connecticut's prisons and jails held 12,386 inmates, 101 more than last month. One year ago, there were 13,445 offenders incarcerated at the DOC, 1,059 more than today. Over the past year, the prison population decline by 7.9%, the largest, in percentage terms, annual decline on record.
- Arrests are down 3% and arraignments 7% from January 2019. Total pre-trial admissions to prison is down 11%, but admissions by persons new to the DOC are down 27% from a year ago. Of the 1300 pretrial admits in January 2019, 380 had never been in the CT prison system before. In January 2020, 1100 accused inmates were admitted to the DOC 278 were new to the system.
- This month's Chart 2a covers what has become known, colloquially at least, as the "January Bump". Each January the prison population swells as sentenced inmates are added to the prison system following a lull over the last bit of the prior year. This year, the bump was exceptionally light, with a net increase of 101 inmates over the month of January.
- OPM CJPPD published two reports this month: the 2020 Prison Population Forecast Report and the 2020 Annual Recidivism Report. Both are available on CJPPD's website by clicking through the link below:

<https://portal.ct.gov/OPM/CJ-About/CJ-SAC/SAC-Sites/SAC-Homepage>

Prison Population Forecast

For most of 2019, OPM's prison population forecast overestimated the number of prisoners who would be incarcerated in the state. By January 2020, the projection was off by 4.8%, or about 625 prisoners. If there is a bright side, it was that the projection had been too conservative. It would have been much worse for the state had OPM underestimated the size of the prison population.

OPM has published a new prison population forecast for the coming year. This forecast model assumes that the number of prisoners will continue to decline as it has every year, excluding 2013, since peaking in 2008. The rate of decline, however, is not expected to be as steep as those in 2016, 2017 and certainly not rapid as last year - 2020.

The state's prison population follows regular seasonal cycles. During a typical year, the prison population hits its lowest level in late December. During January the prison population generally rebounds as the court business returns to normal levels after the holidays. In some years, the prison population peaks in February. In others, the population peaks during the late summer or in early fall. Chart 2a, on page 2, explains the "January Bump" in more detail.

TABLE 1 – Prison Population Forecast

	Avg. Daily Count	OPM 2020 Forecast	Inmate difference
JAN '20	12,315	-	-
FEB	12,413	12,413	-
MAR		12,293	-
APR		12,234	-
MAY		12,163	-
JUN		12,120	-
JUL		12,072	-
AUG		12,074	-
SEP		12,044	-
OCT		12,046	-
NOV		12,015	-
DEC		11,922	-
JAN '21		11,722	-
FEB		11,867	-

Avg. Daily Count (ADC) for 1st week of month

Chart 1 – Actual prison population against the OPM forecasts
January 1, 2019 through February 1, 2021

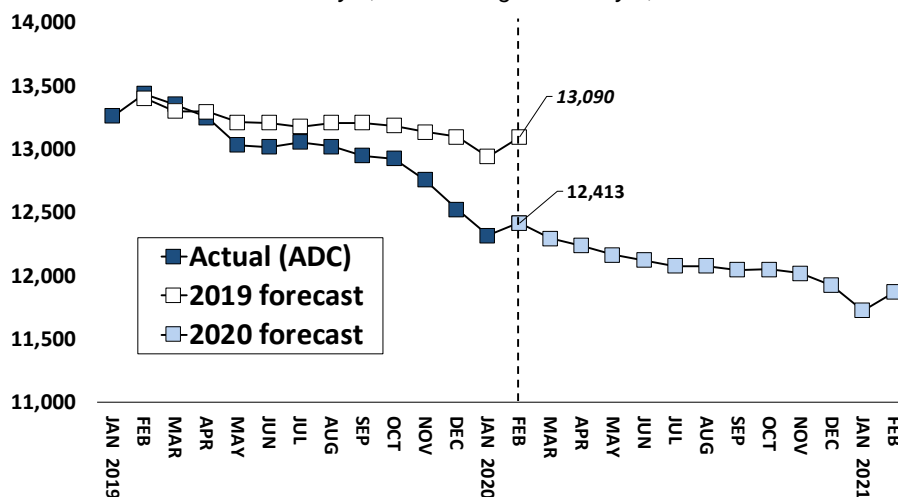


Chart 2 - Criminal justice, monthly counts and flows

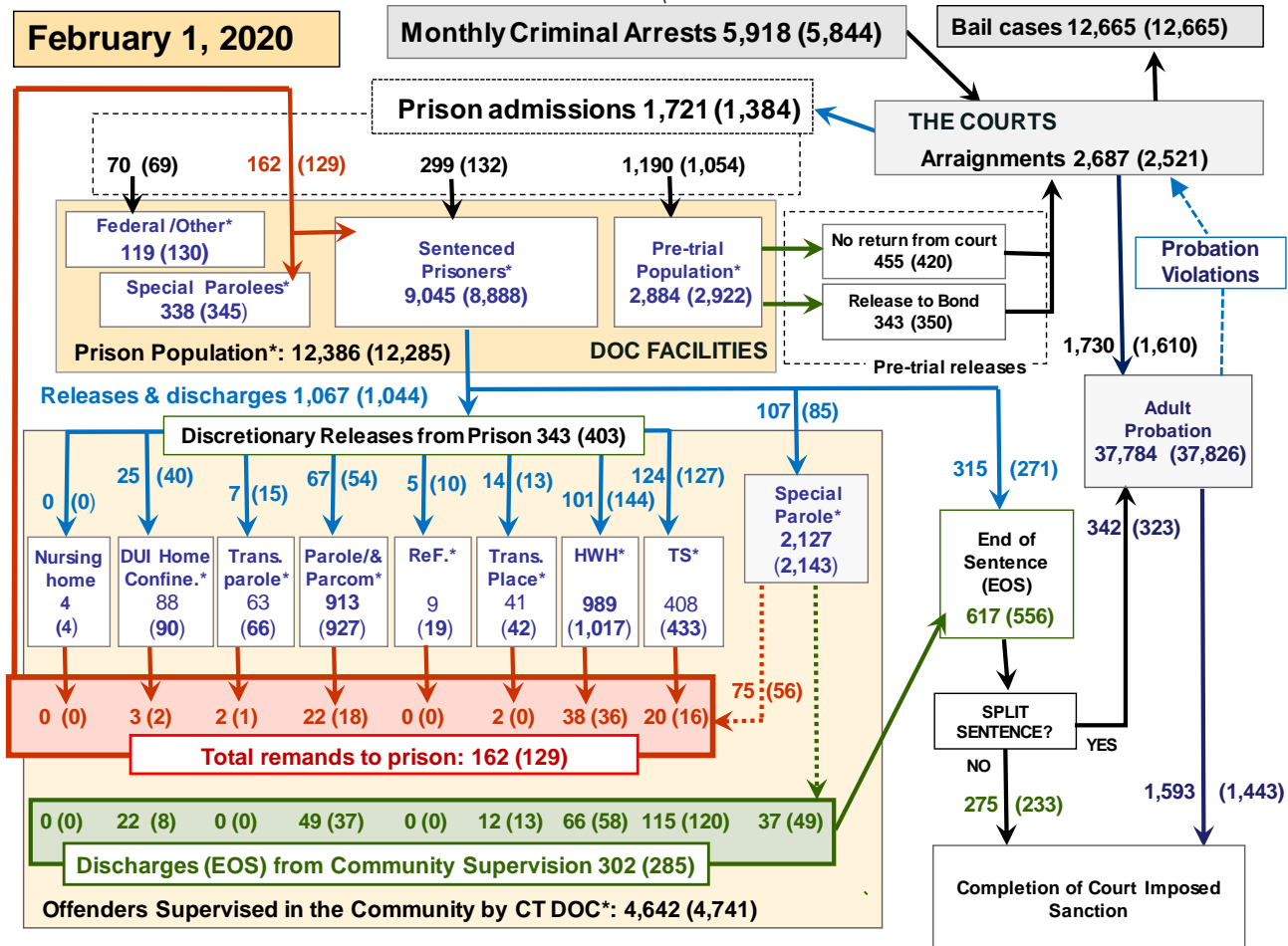
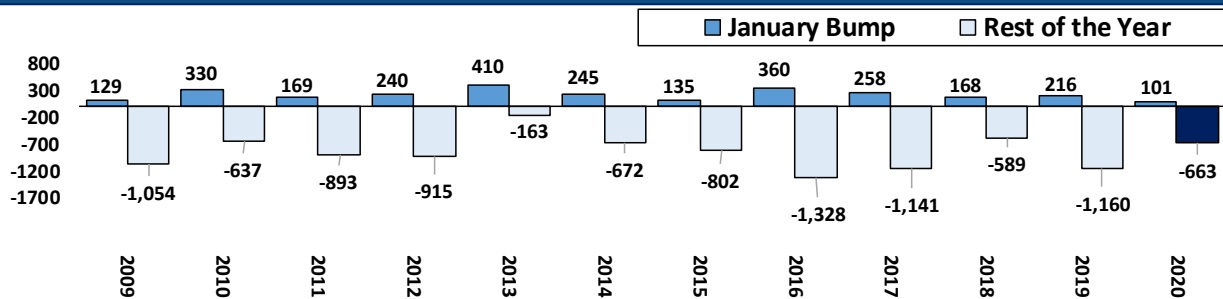


Chart 2 contains monthly operations data for January 2020 and daily counts reported on February 1, 2020. Asterisks (*) indicate the daily count on February 1st. Figures for last month are enclosed by parentheses. Sources: Arrests – CRMVS, Court and probation data – CSSD, all other data – CT DOC.

Chart 2a – January Bump



Typically, the prison population declines each year during the late fall only to rebound strongly after January 1st. The number of offenders getting sentenced spikes in January and the subsequent increase in the prison population has become known as “the January bump”.

Since 2008, the prison population has increased every January. This year’s increase of 101 prisoners appears relatively modest in comparison to recent years. In the past the prison population has expanded by upwards of 400 prisoners in a single month.

Because of the January bump, early February is the time of the year when the prison population peaks. The chart above shows the range of January population increases going back to 2008, and the subsequent decrease in the number of prisoners between February 1st and the following January.

OPM recently completed its prison population forecast for the coming year. If accurate, the prison population could decline to 11,722 by January 1, 2021 - a projected net decrease of 663 people.

Table 2 - First-of-month totals

	2019	2019	2020	2019	% Change	
	Dec. 1	Jan. 1	Feb. 1	Feb. 1	Monthly	Annual
DOC Facilities						
Federal/Other	140	130	119	118	-8.5%	0.8%
Sentenced	9,083	8,888	9,045	9,534	1.8%	-5.1%
Special Parole	336	345	338	428	-2.0%	-21.0%
Pre-trial	2,971	2,922	2,884	3,365	-1.3%	-14.3%
Total	12,530	12,285	12,386	13,445	0.8%	-7.9%
DOC Community						
Transfer Parole	53	66	63	14	0.0%	0.0%
Parole/ Parcom Total	951	927	913	1,024	-1.5%	-10.8%
Parole	792	772	752	857	-2.2%	-12.3%
Parcom @ CT	159	155	161	167	3.9%	-3.6%
Furlough	10	19	9	15	-	-
Trans Placement	46	42	41	68	-2.4%	-39.7%
DUI/Home confine.	62	90	88	88	-2.2%	0.0%
Halfway House Total	1,022	1,017	989	1,061	-2.8%	-6.8%
Comm Release	509	528	483	514	-8.5%	-6.0%
TS	28	23	23	28	0.0%	-17.9%
Parole	130	134	137	163	2.2%	-16.0%
Transfer Parole	9	9	11	2	-	-
Special Parole	346	323	335	354	3.7%	-5.4%
TS	465	433	408	419	-5.8%	-2.6%
Nursing home	4	4	4	5	-	-
Special Parole	2,142	2,143	2,127	1,959	-0.7%	8.6%
Total	4,755	4,741	4,642	4,653	-2.1%	-0.2%

Table 2a - Monthly admissions, releases & discharges

	2019	2019	2019	2018	% Change	
	Nov.	Dec.	Jan.	Jan.	Monthly	Annual
Admissions						
Federal/Other	66	69	70	73	1.4%	-4.1%
Remands	136	129	162	133	25.6%	21.8%
DUI	2	3	5	2	-	-
Parole	25	18	22	21	22.2%	4.8%
Trans Plac/Furlough	1	0	2	3	-	-
HWH	27	36	38	27	5.6%	40.7%
TS	18	16	20	26	25.0%	-23.1%
Special Parole	61	56	75	54	33.9%	38.9%
New Sentence	129	132	299	399	126.5%	-25.1%
VOP	34	45	79	101	75.6%	-21.8%
Pre-trial	1,046	1,054	1,190	1,332	12.9%	-10.7%
Total	1,377	1,384	1,721	1,937	24.3%	-11.2%
Releases and discharges						
Transfer Parole	7	15	7	6	-	-
Parole	62	54	67	96	24.1%	-30.2%
Furlough	12	10	5	12	-	-
Trans. Placement	11	13	14	18	7.7%	-22.2%
Home Confinement DUI	13	40	25	28	-37.5%	-10.7%
HWH	117	144	101	118	-29.9%	-14.4%
TS	151	127	124	136	-2.4%	-8.8%
Special Parole	101	85	107	132	25.9%	-18.9%
Nursing home	0	0	0	0	-	-
End of Sentence	551	556	617	549	11.0%	12.4%
Total	1,025	1,044	1,067	1,095	2.2%	-2.6%
Pre-trial Releases*						
From Court	442	420	455	509	8.3%	-10.6%
Release to Bond	362	350	343	357	-2.0%	-3.9%

* Totals reflect events, not individual offenders

DOC - Community Release Unit (CRU)

Table 3 - Case reviews and release metrics

	Cases				Approval Rate
	Reviewed	Approved	Denied	Continued	
Nov.	688	298	103	111	43%
Dec.	602	269	78	96	45%
Jan. 20	632	289	116	89	46%
Jan. '19	695	332	106	101	48%

Note: Figures published here are based on the operational data available at the time of publication. Data in subsequent issues may not agree.

Board of Pardons and Paroles

Table 4 - Parole hearings, new cases

	Parole Hearings	Paroles granted	Grant rate	Paroles granted, 2019	Paroles granted, 2018
Nov.	141	67	48%	74	91
Dec.	148	68	46%	74	87
Jan. '20	119	63	53%	65	87

Table 4a - Other BOPP actions

	Reparole from revocation	Reparole from rescission	Closed interest cases	Special parole cases	Transfer parole cases
Nov.	33	1	18	21	9
Dec.	44	1	29	26	11
Jan. '20	55	1	20	22	8
Jan. '19	43	2	28	18	15

The pre-trial population

Table 5 - Bond ranges for pre-trial detainees

Bond amount	Dec. 1, 2019	Jan. 1, 2020	Feb. 1, 2020	Feb. 1, 2019
Less than \$20K	451	421	422	531
\$20K to <\$50K	421	437	452	467
\$50K to <\$100K	530	534	516	630
\$100K or higher	1,707	1,678	1,642	1,858
Persons w/bonds	3,109	3,070	3,032	3,486
Over \$1M	208	208	222	196

Table 5a - Pre-trial, weeks since admission

Weeks since last DOC admit	Dec. 1, 2019	Jan. 1, 2020	Feb. 1, 2020	Feb. 1, 2019
< 1 week	353	277	362	368
1 to < 3 weeks	288	287	271	331
3 to < 10 weeks	667	688	629	852
10 to < 30 weeks	879	888	873	1,008
30 wks or more	923	945	901	933
Pre-trial prisoners	3,110	3,085	3,036	3,492

Table 5b - Pre-trial admits, new offenders

	Nov. 2019	Dec. 2019	Jan. 2020	Jan. 2019
Arraignments	2,404	2,521	2,687	2,884
Pre-trial Admits	1,046	1,054	1,190	1,332
New to DOC	263	277	278	380
% New	25%	26%	23%	29%

Court Support Services Division

Table 6 - The Jail Re-interview Program

	Pre-trial admissions	Offender interviews	Offenders released	Released last year
Nov.	1,046	782	293	301
Dec.	1,054	733	260	303
Jan. '20	1,190	781	267	324

Table 6a - Pre-trial bail and probation caseloads

	Pre-trial Bail Case Starts	Client Supv. Starts	Split Sentence Starts	Pre-trial bail cases
Nov.	2,050*	1,808	358	12,665*
Dec. '19	2,050*	1,610	323	12,665*
Jan. '20	2,050*	1,730	342	12,665*
Jan. '19	2,050*	2,101	375	12,665*

* CSSD estimates

Chart 3 – Prison population

First week of the month, avg. daily count (ADC)

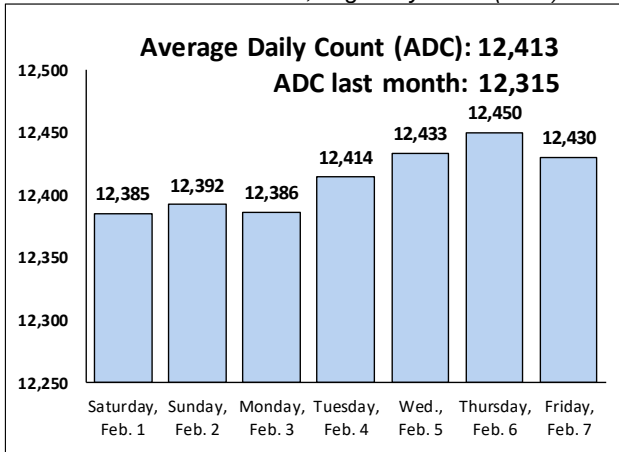


Chart 6 – Monthly DOC Admissions

December 2018 through January 2020

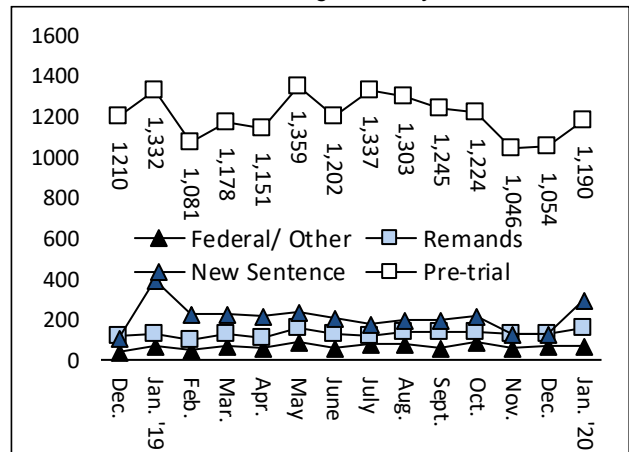


Chart 4 – Prison population, first-of-month

2017, 2018, 2019 and 2020

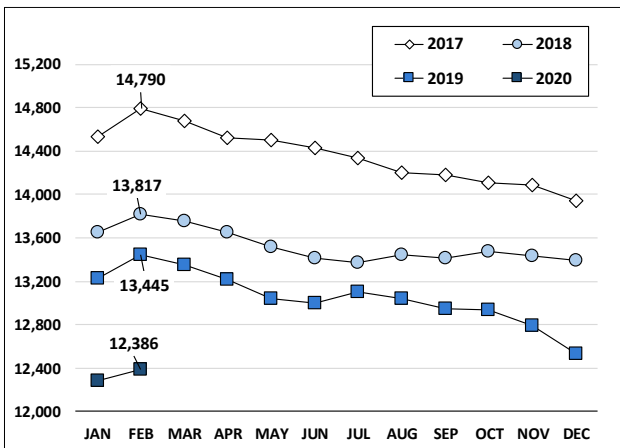


Chart 7– Remands from community release

January 2020

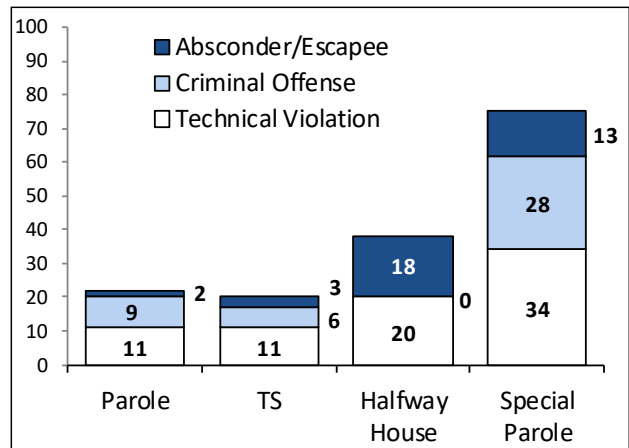


Chart 5 – Statewide criminal arrests

2019 and 2020

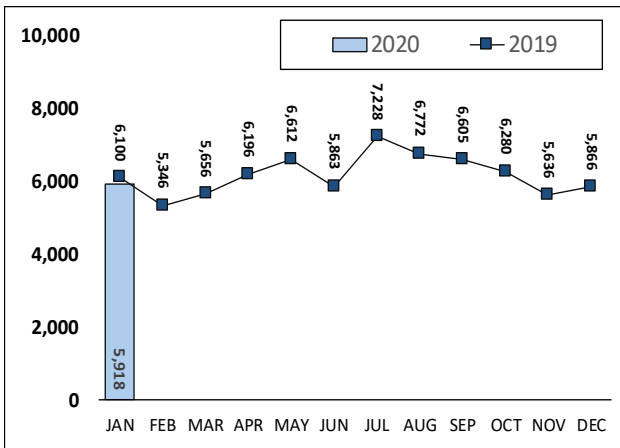
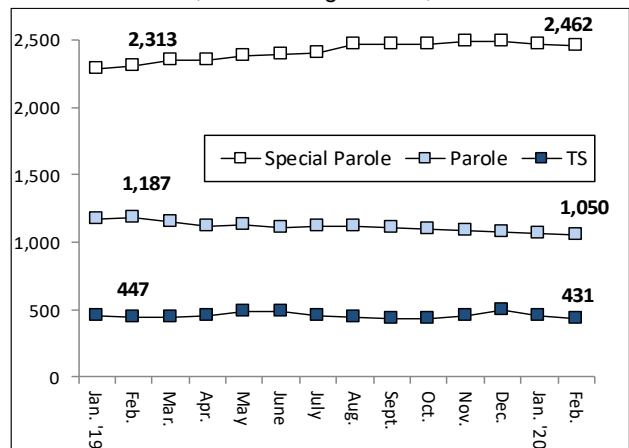


Chart 8 – DOC community supervision

Jan. 1, 2019 through Feb. 1, 2020



Note: Data for all charts, except for Chart 5, was supplied by CT DOC. Data for Chart 5 are for new case starts in the state Criminal Motor Vehicle System (CRMVS). Chart 8 includes offenders in halfway houses.