

# OPM - Criminal Justice Policy & Planning Division Monthly Indicators Report

## Highlights

- On December 1<sup>st</sup>, 12,530 inmates were incarcerated in Connecticut’s prisons and jails, representing a reduction of 2.1% since last month and 6.5% from December 2018.
- The pre-trial prison population hit a historic low on December 1<sup>st</sup>. Pretrial inmates numbered less than 2,000 for the first time since 2005, the earliest date OPM has reliable data for this group.
- The number of probationers continues to decline. During the month of November, statewide probationers fell below 38,000. There were 55,863 probationers on December 1<sup>st</sup>, 2009 – nearly 18,000 more. For some context, the entire DOC population, offenders in facilities and on community supervision, currently number 17,285.
- The number of offenders on transitional supervision (TS) increased in last two months. There are 9% more offenders supervised on TS status than this time last year, despite a smaller pool of incarcerated inmates which speaks to the continued focus on getting eligible and appropriate inmates a review and if approved, a release to supervision.
- Chart 5 on page 4 has been updated to reflect an accurate count of statewide arrests. The months of June, July and August had been overcounted because cases transferred from a closed court were being counted as new arrests. CJIS and Judicial were able to remove the duplicate cases. Arrests have been lower compared to 2018 each month, save for September 2019.

## Prison Population Forecast

The gap between OPM's forecast and the actual prison population has widened over the past two months. OPM predicted a gradual, late year drop akin to what happened over the course of last year, but the population has bucked that trend and undergone a historically quick decline. Last month the prison population contracted faster than it had in any October on record. In an all-out effort to undermine an otherwise appropriate forecast, the prison population fell by more than 2% in November, much faster than predicted, setting up for the month that typically sees the largest population drop of the year, December.

2019 saw decreases among all sizable segments of the prison system. Pretrial inmates are down 11%, sentenced 4.4% and special parolees 25%. The cumulative effect of drops across all populations has amplified the overall decreases seen in 2019, especially late in the year as the number of sentenced inmates has accelerated its decline.

**TABLE 1 – Prison Population Forecast**

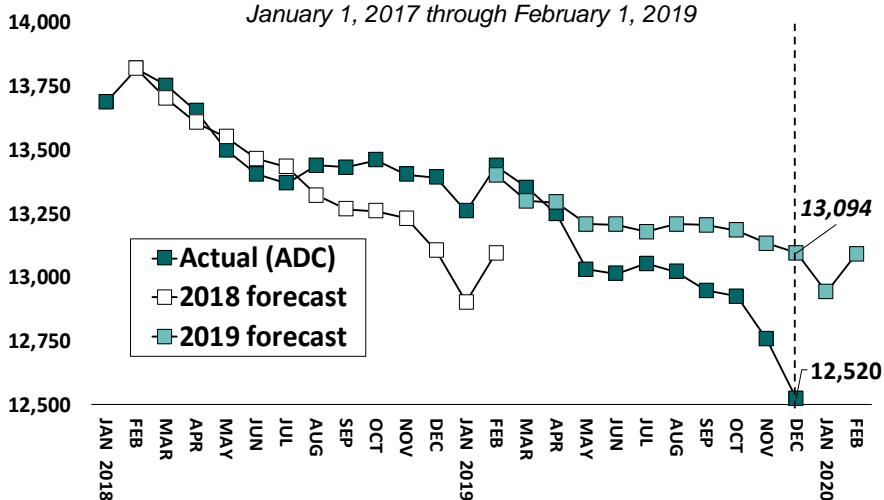
	Avg. Daily Count	OPM 2019 Forecast	Inmate difference
JAN '19	13,259	-	-
FEB	13,436	13,400	-
MAR	13,352	13,298	-54
APR	13,247	13,293	46
MAY	13,029	13,208	179
JUN	13,013	13,205	192
JUL	13,052	13,177	125
AUG	13,020	13,207	187
SEP	12,947	13,204	257
OCT	12,924	13,183	259
NOV	12,756	13,131	375
DEC	12,520	13,094	574
JAN '20	-	12,940	-
FEB	-	13,090	-

*Avg. Daily Count (ADC) for 1st week of month*

Over the past several years, the prison population has averaged a drop of 235 inmates during the month of December. Should that hold true this year, we could see a January 1<sup>st</sup> population below 12,300.

**Chart 1 – Actual prison population against the OPM forecasts**

*January 1, 2017 through February 1, 2019*



## Chart 2 - Criminal justice, monthly counts and flows

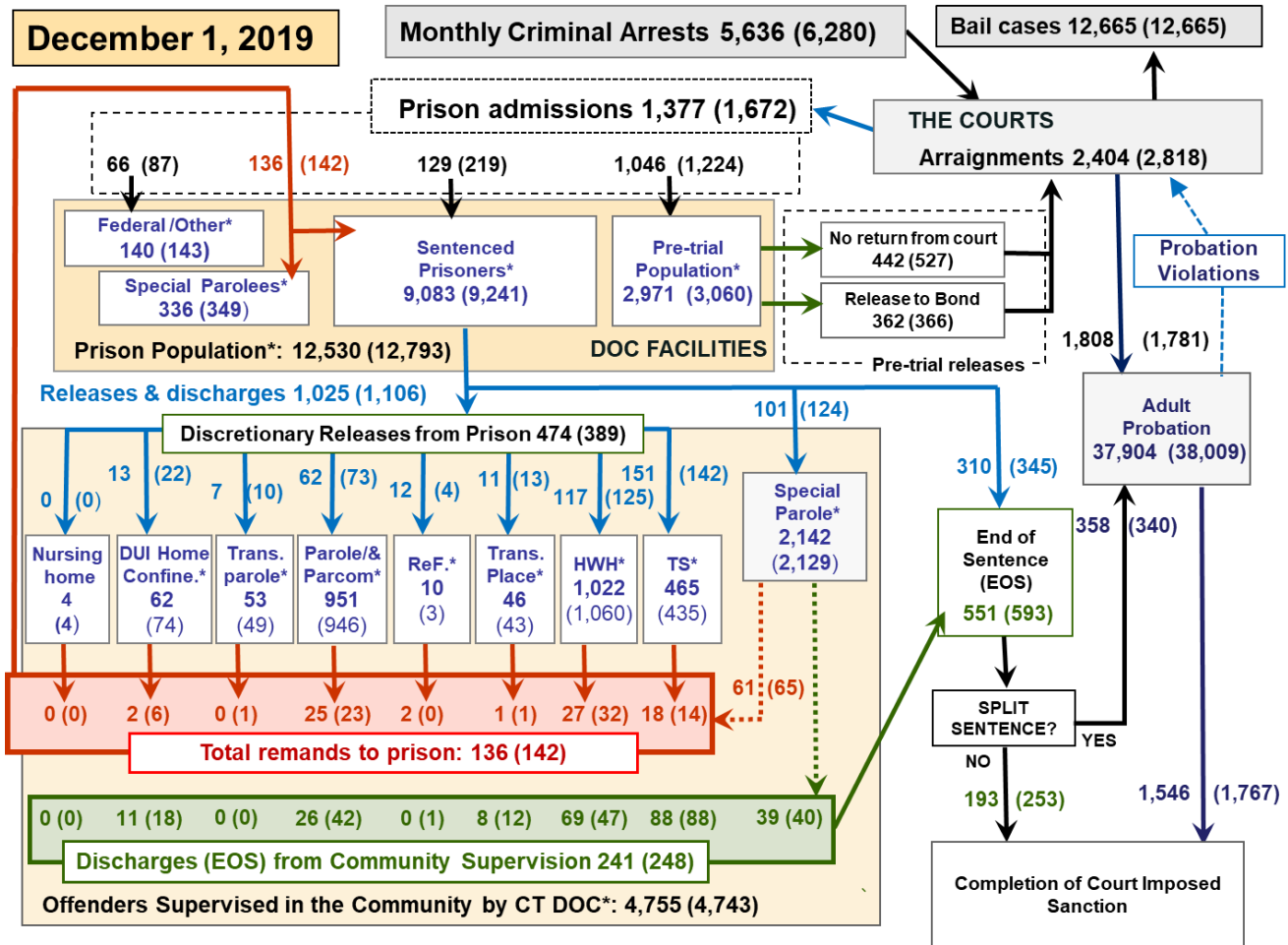
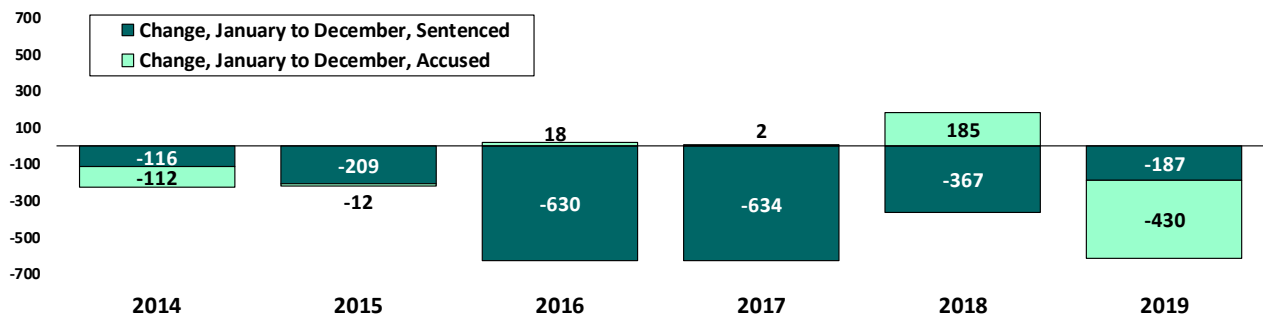


Chart 2 contains monthly operations data for November 2019 and daily counts reported on December 1, 2019. Asterisks (\*) indicate the daily count on December 1<sup>st</sup>. Figures for last month are enclosed by parentheses. Sources: Arrests – CRMVS, Court and probation data – CSSD, all other data – CT DOC.

## Chart 2a – Change in sentenced and pretrial inmates, January to December



In a change from recent history, a reduction in the number of pretrial prisoners has been a primary driver of the prison population's contraction in 2019. The prison population has fallen considerably each of the six years, but as the chart above shows, sentenced inmates (dark shade) have been the group shrinking the most, if at all. In 2018 the pretrial population grew, offsetting the drop in the sentenced, contributing to a smaller overall decrease in that year.

Fewer pretrial inmates entered the prison system in 2019, 8 % fewer throughout the first eleven months of the year.

Sentenced inmates have fallen slower in 2019. One possible factor partially contributing to both the big drop in pretrial and the smaller decrease among sentenced inmates might be that a considerable portion of pretrial inmates have transitioned to sentenced inmates, effectively backfilling released sentenced inmates.

**Table 2 - First-of-month totals**

	2019				% Change	
	Oct. 1	Nov. 1	Dec. 1	Dec. 1	Monthly	Annual
<b>DOC Facilities</b>						
Federal/Other	152	143	140	105	-2.1%	33.3%
Sentenced	9,257	9,241	9,083	9,504	-1.7%	-4.4%
Special Parole	366	349	336	449	-3.7%	-25.2%
Pre-trial	3,161	3,060	2,971	<b>3,338</b>	-2.9%	-11.0%
<b>Total</b>	<b>12,936</b>	<b>12,793</b>	<b>12,530</b>	<b>13,396</b>	<b>-2.1%</b>	<b>-6.5%</b>
<b>DOC Community</b>						
Transfer Parole	44	49	53	42	8.2%	26.2%
Parole/ Parcom Total	957	946	951	1,036	0.5%	-8.2%
Parole	800	790	792	859	0.3%	-7.8%
Parcom @ CT	157	156	159	177	1.9%	-10.2%
Furlough	14	3	10	6	-	-
Trans Placement	45	43	46	57	7.0%	-19.3%
DUI/Home confine.	75	74	62	92	-16.2%	-32.6%
Halfway House Total	1,072	1,060	1,022	1,028	-3.6%	-0.6%
Comm Release	520	527	509	485	-3.4%	4.9%
TS	26	23	28	25	21.7%	12.0%
Parole	143	140	130	153	-7.1%	-15.0%
Transfer Parole	10	9	9	5	-	-
Special Parole	373	361	346	360	-4.2%	-3.9%
TS	403	435	465	425	6.9%	9.4%
Nursing home	5	4	4	5	-	-
Special Parole	2,092	2,129	2,142	<b>1,936</b>	0.6%	10.6%
<b>Total</b>	<b>4,707</b>	<b>4,743</b>	<b>4,755</b>	<b>4,627</b>	<b>0.3%</b>	<b>2.8%</b>

**Table 2a - Monthly admissions, releases & discharges**

	2019				% Change	
	Sept.	Oct.	Nov.	Nov.	Monthly	Annual
<b>Admissions</b>						
Federal/Other	63	87	66	55	-24.1%	20.0%
Remands	138	142	136	169	-4.2%	-19.5%
DUI	8	7	2	3	-	-
Parole	24	23	25	26	8.7%	-3.8%
Trans Plac/Furlough	1	1	1	1	-	-
HWH	21	32	27	45	-15.6%	-40.0%
TS	25	14	18	21	28.6%	-14.3%
Special Parole	59	65	61	73	-6.2%	-16.4%
New Sentence	204	219	129	220	-41.1%	-41.4%
VOP	54	63	34	59	-46.0%	-42.4%
Pre-trial	1,245	1,224	1,046	1,186	-14.5%	-11.8%
<b>Total</b>	<b>1,650</b>	<b>1,672</b>	<b>1,377</b>	<b>1,630</b>	<b>-17.6%</b>	<b>-15.5%</b>
<b>Releases and discharges</b>						
Transfer Parole	11	10	7	6	-	-
Parole	58	73	62	73	-15.1%	-15.1%
Furlough	10	4	12	6	-	-
Trans. Placement	9	13	11	13	-15.4%	-15.4%
Home Confinement DUI	14	22	13	17	-40.9%	-23.5%
HWH	130	125	117	136	-6.4%	-14.0%
TS	140	142	151	137	6.3%	10.2%
Special Parole	104	124	101	137	-18.5%	-26.3%
Nursing home	0	0	0	0	-	-
End of Sentence	582	593	551	622	-7.1%	-11.4%
<b>Total</b>	<b>1,058</b>	<b>1,106</b>	<b>1,025</b>	<b>1,147</b>	<b>-7.3%</b>	<b>-10.6%</b>
<b>Pre-trial Releases*</b>						
From Court	446	527	442	443	-16.1%	-0.2%
Release to Bond	361	366	362	347	-1.1%	4.3%

\* Totals reflect events, not individual offenders

**DOC - Community Release Unit (CRU)**

**Table 3 - Case reviews and release metrics**

	Cases				Approval Rate
	Reviewed	Approved	Denied	Continued	
Sept.	617	270	109	99	44%
Oct.	668	297	123	97	44%
Nov.	688	298	103	111	43%
Nov. '18	667	286	95	102	43%

Note: Figures published here are based on the operational data available at the time of publication. Data in subsequent issues may not agree.

**Board of Pardons and Paroles**

**Table 4 - Parole hearings, new cases**

	Parole Hearings	Paroles granted	Grant rate	Paroles granted, 2018	Paroles granted, 2017
Sept.	140	66	47%	82	80
Oct.	152	72	47%	52	109
Nov.	141	67	48%	74	91

**Table 4a - Other BOPP actions**

	Reparole from revocation	Reparole from rescission	Closed interest cases	Special parole cases	Transfer parole cases
Sept.	51	1	11	21	17
Oct.	32	1	21	29	13
Nov.	33	1	18	21	9
Nov. '18	37	1	15	28	2

**The pre-trial population**

**Table 5 - Bond ranges for pre-trial detainees**

Bond amount	Oct. 1, 2019	Nov. 1, 2019	Dec. 1, 2019	Dec. 1, 2018
Less than \$20K	515	459	451	528
\$20K to <\$50K	455	452	421	518
\$50K to <\$100K	526	519	530	613
\$100K or higher	1,731	1,712	1,707	1,795
Persons w/bonds	3,227	3,142	3,109	3,454
Over \$1M	202	199	208	196

**Table 5a - Pre-trial, weeks since admission**

Weeks since last DOC admit	Oct. 1, 2019	Nov. 1, 2019	Dec. 1, 2019	Dec. 1, 2018
< 1 week	360	335	353	407
1 to < 3 weeks	311	287	288	279
3 to < 10 weeks	754	716	667	804
10 to < 30 weeks	879	885	879	1,020
30 wks or more	928	923	923	946
Pre-trial prisoners	3,232	3,146	3,110	3,456

**Table 5b - Pre-trial admits, new offenders**

	Sept. 2019	Oct. 2019	Nov. 2019	Nov. 2018
Arraignments	2,872	2,818	2,404	2,588
Pre-trial Admits	1,245	1,224	1,046	1,186
New to DOC	308	275	263	286
% New	25%	22%	25%	24%

**Court Support Services Division**

**Table 6 - The Jail Re-interview Program**

	Pre-trial admissions	Offender interviews	Offenders released	Released last year
Sept.	1,245	870	288	314
Oct.	1,224	967	342	342
Nov.	1,046	782	293	301

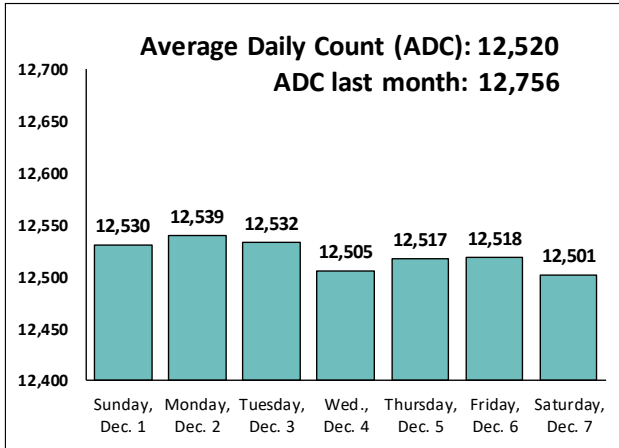
**Table 6a - Pre-trial bail and probation caseloads**

	Pre-trial Bail Case Starts	Client Supv. Starts	Split Sentence Starts	Pre-trial bail cases
Sept.	2,050*	1,526	348	12,665*
Oct.	2,050*	1,781	340	12,665*
Nov.	2,050*	1,808	358	12,665*
Nov. '18	2,050*	1,816	362	12,665*

\* CSSD estimates

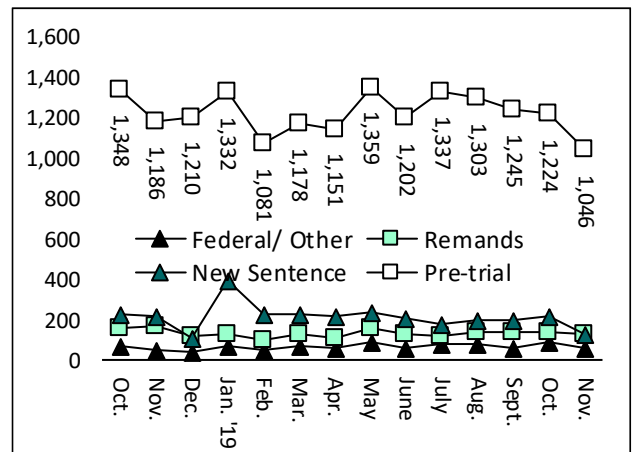
**Chart 3 – Prison population**

First week of the month, avg. daily count (ADC)



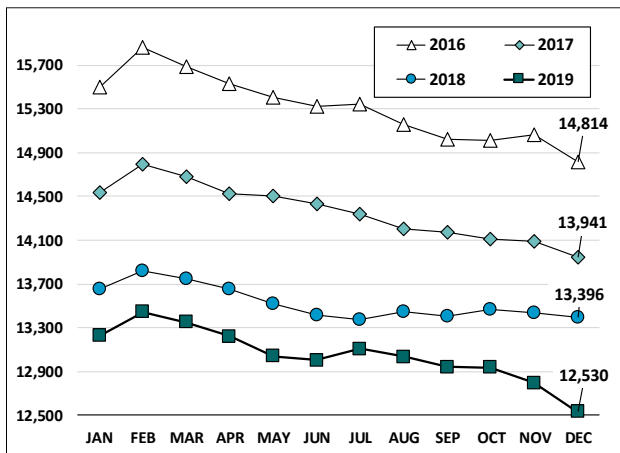
**Chart 6 – Monthly DOC Admissions**

October 2018 through November 2019



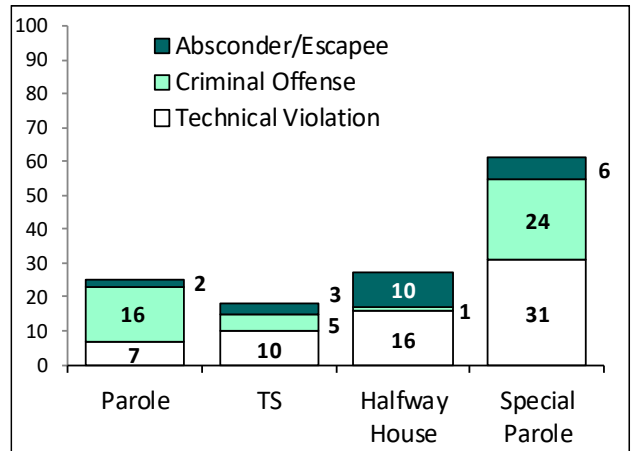
**Chart 4 – Prison population, first-of-month**

2016, 2017, 2018 and 2019



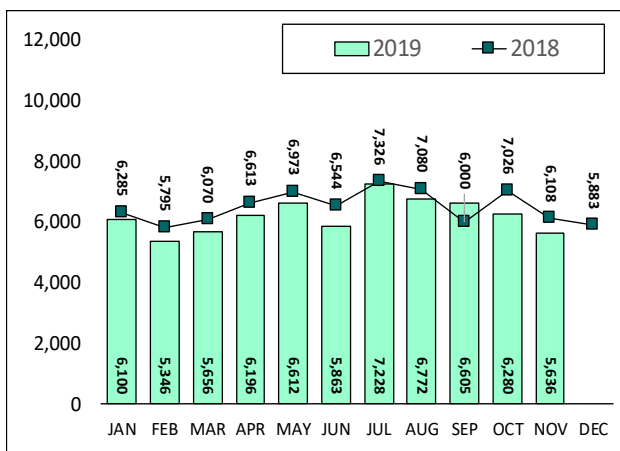
**Chart 7– Remands from community release**

November 2019



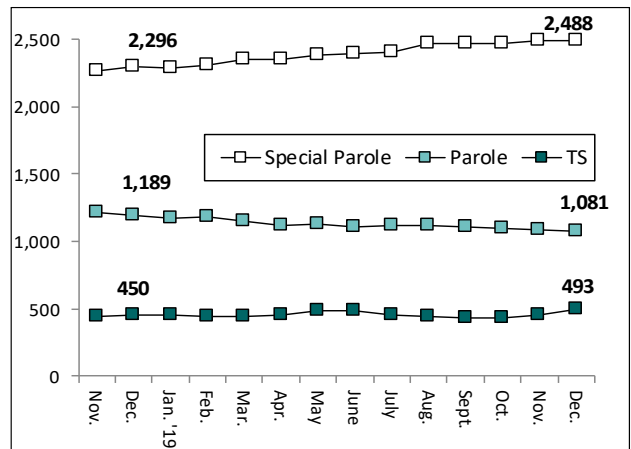
**Chart 5 – Statewide criminal arrests**

2018 and 2019



**Chart 8 – DOC community supervision**

Nov. 1, 2018 through Dec. 1, 2019



Note: Data for all charts, with the exception of Chart 5, was supplied by CT DOC. Data for Chart 5 are for new case starts in the state Criminal Motor Vehicle System (CRMVS). Chart 8 includes offenders in halfway houses.