

# OPM - Criminal Justice Policy & Planning Division

# Monthly Indicators Report

## Highlights

- On August 1<sup>st</sup>, Connecticut prisons and jails held 13,035 inmates. The prison population has been at or near 13,000 since early May; a pattern similar to the one displayed last year.
- The number of special parolees held on remand has been dropping. On August 1<sup>st</sup> the count of special parolees incarcerated on remand fell below 400 (chart 2 and table 2). The last time the figure was as low was October 2014 when there were a total of 1,631 special parolees. This month there are 2,840.
- During the month of July there were 7,552 arrests statewide, roughly 200 more than July 2018. Despite the uptick in arrests, there were nearly the same number of arraignments from lockup and about 200 fewer pretrial admissions to prison compared to last July. The discrepancy is evidence of the inexactness of the criminal justice system. Arrests, while a good measure of new business at the front end of the system lack context.
- Chart 2a shows how a drop in young prisoners that started in the early 2010s has travelled through subsequent age groups incarcerated at the CT DOC. The greatest impact appears to be among a cohort born around 1990. As that group ages, the drop appears in the number of inmates in older age groups at the DOC
- OPM is missing a few data elements this month, indicated by "x"s in various charts and tables. The data will be backfilled next month.

## Prison Population Forecast

The state's prison population has remained near the 13,000 inmate level since the beginning of May. This pattern closely matches OPM's February forecast. Save for an unexpected decrease in April, OPM's February forecast has, within half-a-percent (.05%) accuracy, predicted the month to month changes thus far in the prison population. The abrupt decline in April may be due the timing of several unrelated dynamics that coincidentally came to fruition during that month, with the greatest impacts being felt by the pretrial population.

Pretrial admissions have been down. The decline has attenuated to a degree since the end of April. Through the first four months of the year, pretrial admits were running 8% lower than in 2018.

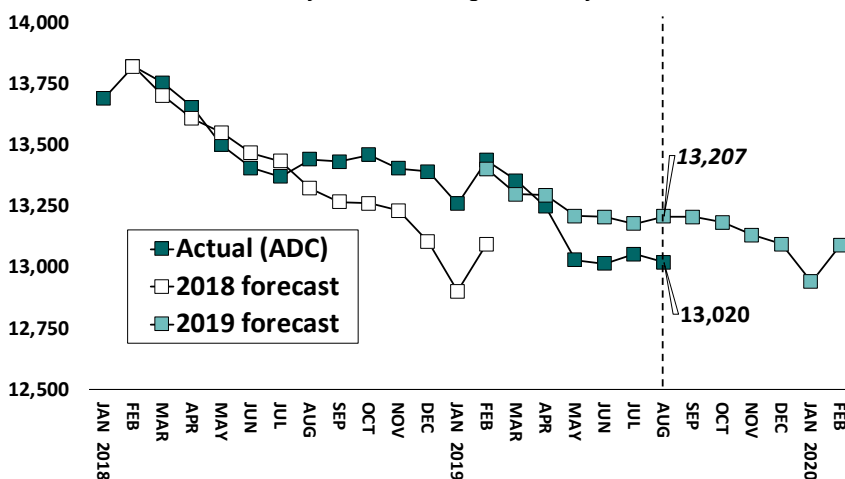
Pretrial offenders released at court or through bond have held steady, which in rate terms, means a higher percentage of the business coming in the front door is finding its way to an exit. In addition there is some evidence that pretrial inmates' cases were disposed of at a higher rate early in 2019 than they had been in prior years. OPM estimates that there were approximately 4% more pretrial inmates who transitioned to sentenced status in early 2019 compared to 2018, effectively squeezing the pretrial prison population from the back end; at the same time adding to the sentenced population, contributing to a slower decline in that group.

**TABLE 1 – Prison Population Forecast**

	Avg. Daily Count	OPM 2019 Forecast	Inmate difference
JAN '19	13,259	-	-
FEB	13,436	13,400	-
MAR	13,352	13,298	-54
APR	13,247	13,293	46
MAY	13,029	13,208	179
JUN	13,013	13,205	192
JUL	13,052	13,177	125
AUG	13,020	13,207	187
SEP		13,204	-
OCT		13,183	-
NOV		13,131	-
DEC		13,094	-
JAN '20		12,940	-
FEB		13,090	-

*Ava. Daily Count (ADC) for 1st week of month*

**Chart 1 – Actual prison population against the OPM forecasts**  
January 1, 2017 through February 1, 2019



## Chart 2 - Criminal justice, monthly counts and flows

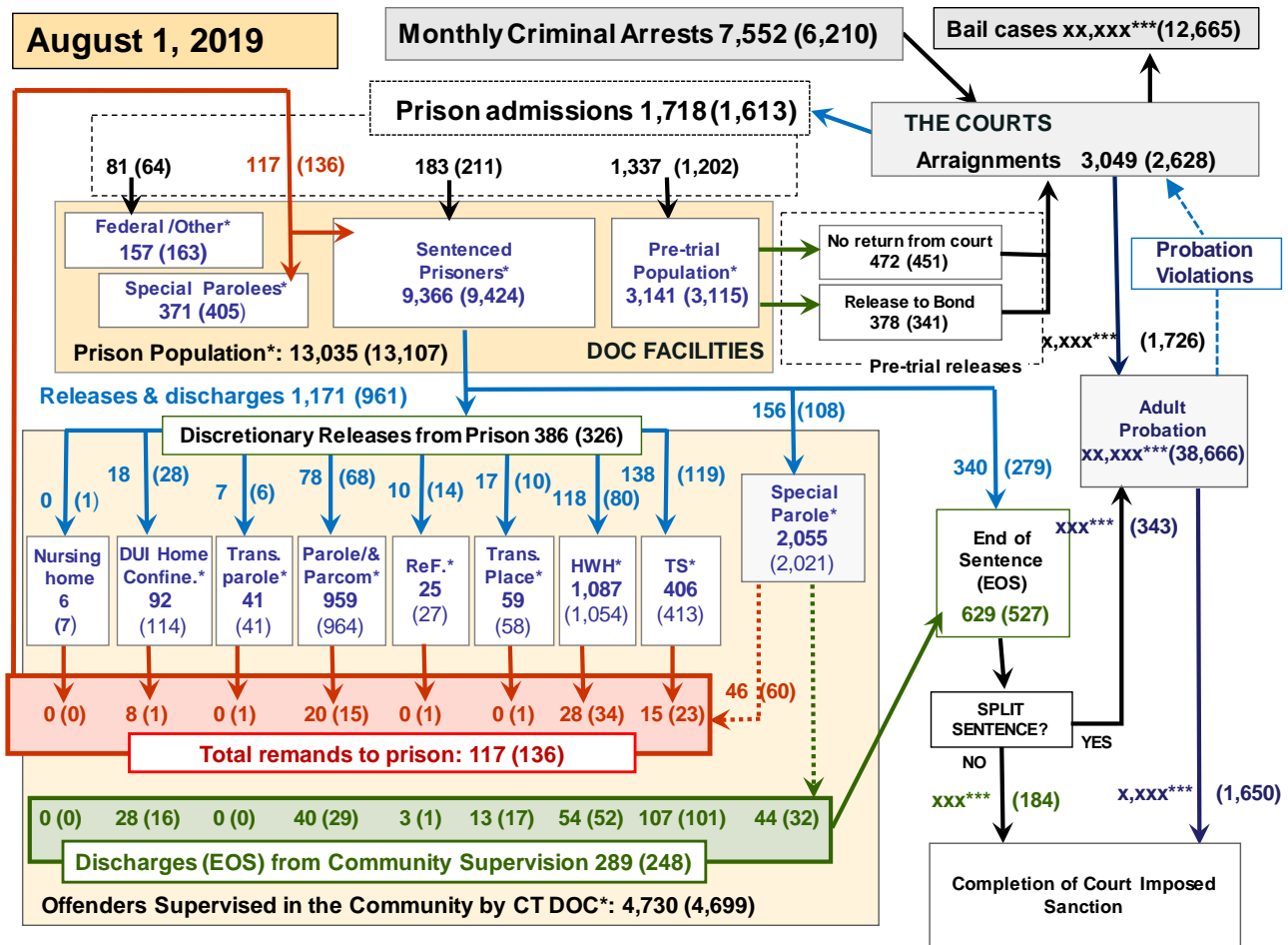
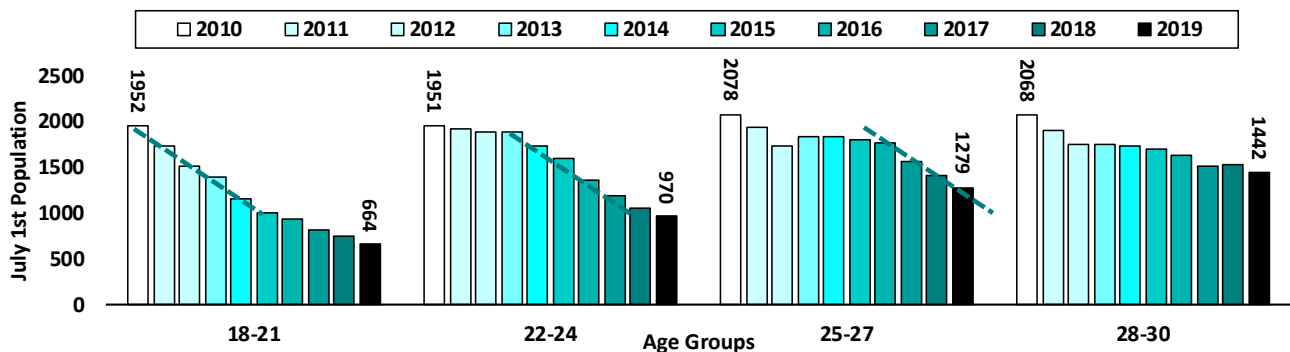


Chart 2 contains monthly operations data for July 2019 and daily counts reported on August 1, 2019. Asterisks (\*) indicate the daily count on August 1st. Figures for last month are enclosed by parentheses. Sources: Arrests – CRMVS, Court and probation data - CSSD, all other data - CT DOC. \*\*\* Some Judicial Branch data this month is missing.

## Chart 2a – Age of the incarcerated population



The prison population has declined by nearly 30% since 2010. Among young prisoners the decline has been even more pronounced. The number of inmates aged 18-21 have fallen by two-thirds, with most of that drop occurring between 2010 and 2014. Similar pattern of decline moves forward across age groups.

The chart above shows inmates by age group incarcerated in the CT DOC on the first of July from 2010 to 2019. A steep drop in the early 2010s is seen in the 18-21 age group, indicated by the diagonal dotted line. After 2014, the slope gets less

severe. At that point the downslope appears in the next oldest age group, 22-24 year olds. Beginning in 2014 a steep drop off is evident for that group and softens in 2017.

Following the pattern described above, the 25-27 year old age group shows signs of a steep decline in 2016, continuing to the present. Given this prescription, it can be anticipated that a similar, if slightly weakened, version of the same will be seen in 28-30 age group in the near future. Sustaining a dip in young offenders suggests the prison population should not increase in the near future.

**Table 2 - First-of-month totals**

	2019		2018		% Change	
	June 1	July 1	Aug. 1	Aug. 1	Monthly	Annual
<b>DOC Facilities</b>						
Federal/Other	147	163	157	115	-3.7%	36.5%
Sentenced	9,400	9,424	9,366	9,470	-0.6%	-1.1%
Special Parole	403	405	371	418	-8.4%	-11.2%
Pre-trial	3,052	3,115	3,141	3,441	0.8%	-8.7%
<b>Total</b>	<b>13,002</b>	<b>13,107</b>	<b>13,035</b>	<b>13,444</b>	<b>-0.5%</b>	<b>-3.0%</b>
<b>DOC Community</b>						
Transfer Parole	47	41	41	37	0.0%	10.8%
Parole/ Parcom Total	963	964	959	1,103	-0.5%	-13.1%
Parole	796	803	797	933	-0.7%	-14.6%
Parcom @ CT	167	161	162	170	0.6%	-4.7%
Furlough	28	27	25	3	-	-
Trans Placement	69	58	59	58	1.7%	1.7%
DUI/Home confine.	105	114	92	105	-19.3%	-12.4%
Halfway House Total	1,075	1,054	1,087	1,042	3.1%	4.3%
Comm Release	513	465	472	498	1.5%	-5.2%
TS	43	43	35	50	-18.6%	-30.0%
Parole	147	157	164	146	4.5%	12.3%
Transfer Parole	3	4	2	6	-	-
Special Parole	369	385	414	342	7.5%	21.1%
TS	441	413	406	453	-1.7%	-10.4%
Nursing home	5	7	6	6	-	-
Special Parole	2,029	2,021	2,055	1,927	1.7%	6.6%
<b>Total</b>	<b>4,762</b>	<b>4,699</b>	<b>4,730</b>	<b>4,734</b>	<b>0.7%</b>	<b>-0.1%</b>

**Table 2a - Monthly admissions, releases & discharges**

	2019		2018		% Change	
	May	June	July	July	Monthly	Annual
<b>Admissions</b>						
Federal/Other	87	64	81	51	26.6%	58.8%
Remands	160	136	117	164	-14.0%	-28.7%
DUI	3	2	8	3	-	-
Parole	24	15	20	23	33.3%	-13.0%
Trans Plac/Furlough	4	2	17	2	-	-
HWH	27	34	28	30	-17.6%	-6.7%
TS	18	23	15	28	-34.8%	-46.4%
Special Parole	80	60	46	77	-23.3%	-40.3%
New Sentence	240	211	183	185	-13.3%	-1.1%
VOP	72	65	66	64	1.5%	3.1%
Pre-trial	1,359	1,202	1,337	1,514	11.2%	-11.7%
<b>Total</b>	<b>1,846</b>	<b>1,613</b>	<b>1,718</b>	<b>1,914</b>	<b>6.5%</b>	<b>-10.2%</b>
<b>Releases and discharges</b>						
Transfer Parole	10	6	7	10	-	-
Parole	83	68	78	96	14.7%	-18.8%
Furlough	10	14	10	7	-	-
Trans. Placement	21	10	17	24	70.0%	-29.2%
Home Confinement DUI	29	28	18	29	-35.7%	-37.9%
HWH	135	80	118	116	47.5%	1.7%
TS	146	119	138	150	16.0%	-8.0%
Special Parole	153	108	156	147	44.4%	6.1%
Nursing home	0	1	0	0	-	-
End of Sentence	647	527	629	613	19.4%	2.6%
<b>Total</b>	<b>1,234</b>	<b>961</b>	<b>1,171</b>	<b>1,192</b>	<b>21.9%</b>	<b>-1.8%</b>
<b>Pre-trial Releases*</b>						
From Court	536	451	472	507	4.7%	-6.9%
Release to Bond	386	341	378	422	10.9%	-10.4%

\* Totals reflect events, not individual offenders

**DOC - Community Release Unit (CRU)**

**Table 3 - Case reviews and release metrics**

	Cases				Approval
	Reviewed	Approved	Denied	Continued	Rate
May	718	311	119	141	41%
June	605	298	100	96	43%
July	711	312	125	115	44%
July '18	678	312	104	105	46%

Note: Figures published here are based on the operational data available at the time of publication. Data in subsequent issues may not agree.

**Board of Pardons and Paroles**

**Table 4 - Parole hearings, new cases**

	Parole Hearings	Paroles granted	Grant rate	Paroles granted, 2018	Paroles granted, 2017
May	156	78	50%	93	100
June	141	74	52%	62	84
July	140	62	44%	77	87

**Table 4a - Other BOPP actions**

	Reparole from revocation	Reparole from rescission	Closed interest cases	Special parole cases	Transfer parole cases
May	33	0	28	47	12
June	30	1	20	31	1
July	44	2	17	36	13
July '18	27	4	25	39	10

**The pre-trial population**

**Table 5 - Bond ranges for pre-trial detainees**

Bond amount	June 1, 2019	July 1, 2019	Aug. 1, 2019	Aug. 1, 2018
Less than \$20K	424	465	508	639
\$20K to <\$50K	446	435	449	505
\$50K to <\$100K	532	555	570	659
\$100K or higher	1,760	1,770	1,763	1,790
Persons w/bonds	3,162	3,225	3,293	3,593
Over \$1M	194	192	193	203

**Table 5a - Pre-trial, weeks since admission**

Weeks since last DOC admit	June 1, 2019	July 1, 2019	Aug. 1, 2019	Aug. 1, 2018
< 1 week	372	386	437	479
1 to < 3 weeks	333	327	336	424
3 to < 10 weeks	660	727	739	805
10 to < 30 weeks	902	863	878	954
30 wks or more	896	925	903	931
Pre-trial prisoners	3,163	3,228	3,293	3,593

**Table 5b - Pre-trial admits, new offenders**

	May 2019	June 2019	July 2019	July 2018
Arraignments	2,841	2,628	3,049	3,079
Pre-trial Admits	1,359	1,202	1,337	1,514
New to DOC	347	298	359	366
% New	26%	25%	27%	24%

**Court Support Services Division**

**Table 6 - The Jail Re-interview Program**

	Pre-trial admissions	Offender interviews	Offenders released	Released last year
May	1,359	1,025	356	331
June	1,202	990	324	334
July	1,337	974	324	325

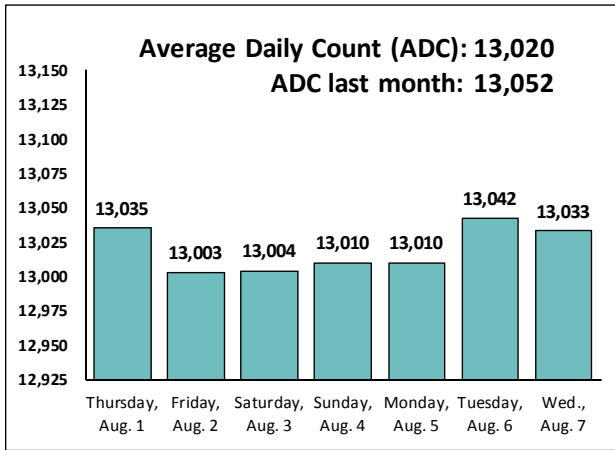
**Table 6a - Pre-trial bail and probation caseloads**

	Pre-trial Bail Case Starts	Client Supv. Starts	Split Sentence Starts	Pre-trial bail cases
May	2,050*	1,997	371	12,665*
June	2,050*	1,726	343	12,665*
July	x,xxx**	x,xxx**	527	xx,xxx**
July '18	2,055*	1,798	366	12,660*

\* CSSD estimates \*\*missing data

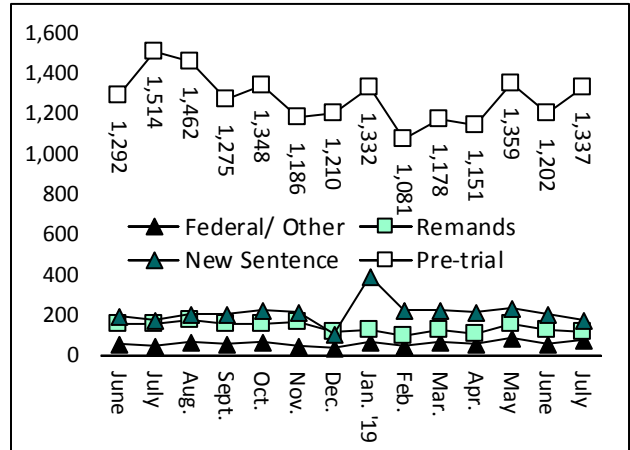
**Chart 3 – Prison population**

First week of the month, avg. daily count (ADC)



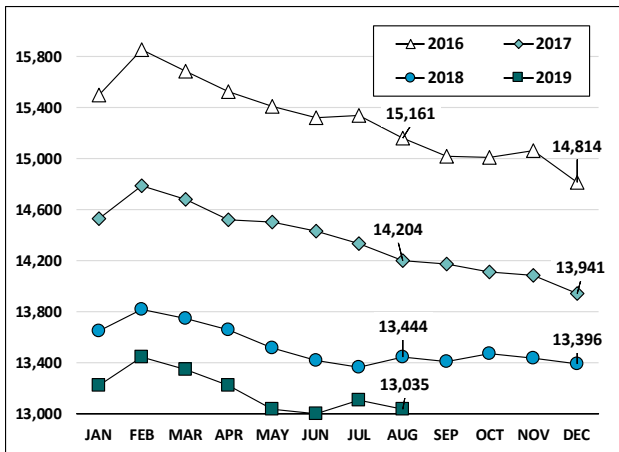
**Chart 6 – Monthly DOC Admissions**

June 2018 through July 2019



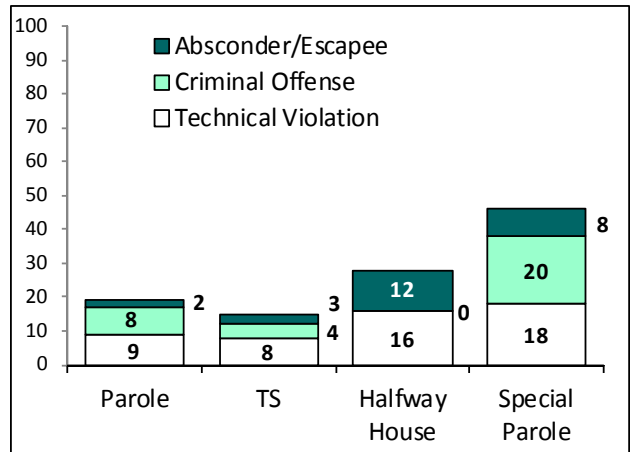
**Chart 4 – Prison population, first-of-month**

2016, 2017, 2018 and 2019



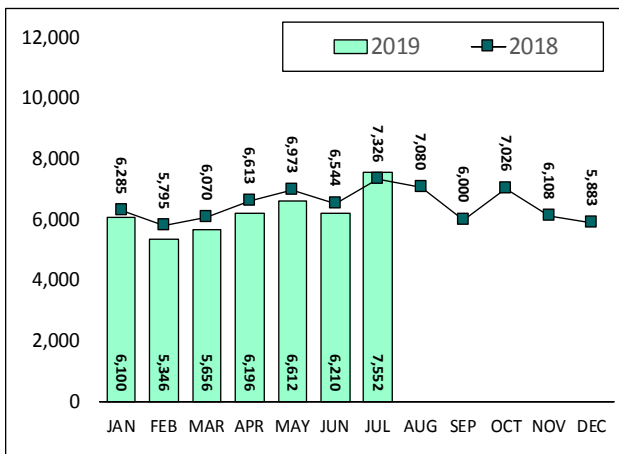
**Chart 7– Remands from community release**

July 2019



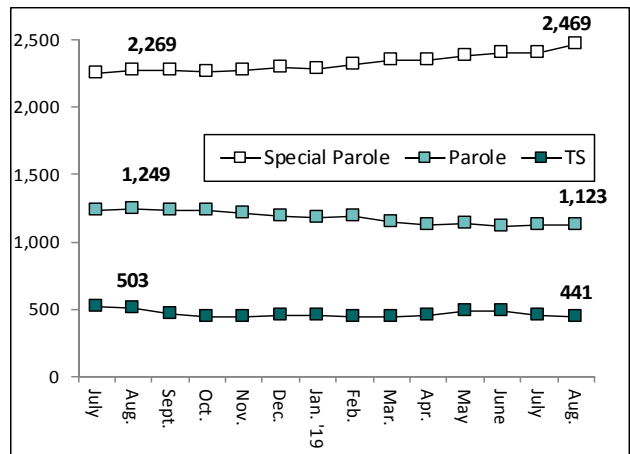
**Chart 5 – Statewide criminal arrests**

2018 and 2019



**Chart 8 – DOC community supervision**

July 1, 2018 through August 1, 2019



Note: Data for all charts, with the exception of Chart 5, was supplied by CT DOC. Data for Chart 5 are for new case starts in the state Criminal Motor Vehicle System (CRMVS). Chart 8 includes offenders in halfway houses.