

OPM - Criminal Justice Policy & Planning Division

Monthly Indicators Report

Highlights

- As anticipated the prison population shrank by a modest 46 inmates during the month of June. On July 1, 2018 - 13,371 inmates were incarcerated in Connecticut's prisons and jails.
- Recently, the WORTH Unit opened at York C.I. Like the TRUE unit at Cheshire CI, the WORTH unit pairs young, 18-25 year old, soon-to-be-released offenders with older, long-serving offender/mentors. Evidence suggests this model should prevent young women from reoffending once released.
- Both the BOPP and CRU denied slightly more offenders seeking early release from prison. As mentioned last month in this paper, it is possible that as the sentenced population shrinks, those that remain could be more risky than in years past.
- The number of pretrial offenders held on bonds in excess of \$150k has grown substantially (18%) over the last year. Policy changes sometimes bring unintended consequences. One potential explanation; courts may be setting higher surety bonds in the absence of the cash only option.
- Recent publicity of assaults on staff at one DOC facility spurred OPM to look into the history and frequency of such incidents. (chart 2a) The physical and emotional trauma of violence is, unfortunately, an all too common fact of life for correctional employees. Despite concerted efforts that have reduced the number of assaults, the DOC has yet to fully eliminate incidents from correctional facilities.

Prison Population Forecast

This year's prison population forecast is proving to be much more accurate than it has been over the last two years. Five months in and the forecast is only off by 64 inmates. Last July, the forecast was off by 200 inmates; two years ago 300 and widening. The 2018 forecast was designed to mimic trends in the prison population over the last two years. Being as accurate as it has been lately suggests that the prison system has settled into a new, less volatile rhythm.

The seasonality of the prison population prior to 2016 often included a "summer bump" driven primarily by an increase in arrests resulting in more pretrial admits. Pretrial counts have grown this year, up 4% compared to last year, but the growth does not seem to be coming from the same drivers as in years past. Year-to-date arrest and pretrial admit totals are at ten-year lows. Rather, the pretrial population seems to be growing due an increase in case processing time. Offsetting the pretrial population's growth, the number of sentenced offenders continues to shrink. Falling almost consistently from a peak on February 1st, the sentenced population is at a level not seen since 1993.

	Avg. Daily Count	OPM 2018 Forecast	Inmate difference
JAN '18	13,688	-	-
FEB	13,819	13,819	-
MAR	13,753	13,701	-52
APR	13,652	13,607	-45
MAY	13,499	13,550	51
JUN	13,405	13,465	60
JUL	13,369	13,433	64
AUG	-	13,320	-
SEP	-	13,265	-
OCT	-	13,259	-
NOV	-	13,230	-
DEC	-	13,103	-
JAN '19	-	12,901	-
FEB	-	13,093	-

Avg. Daily Count (ADC) for 1st week of month

OPM's forecast model relies on aggregate inputs and outputs of the prison system, which is why despite some shifting internal processes, the forecast has remained accurate.

Chart 1 – Actual prison population against the OPM forecasts
January 1, 2017 through February 1, 2019

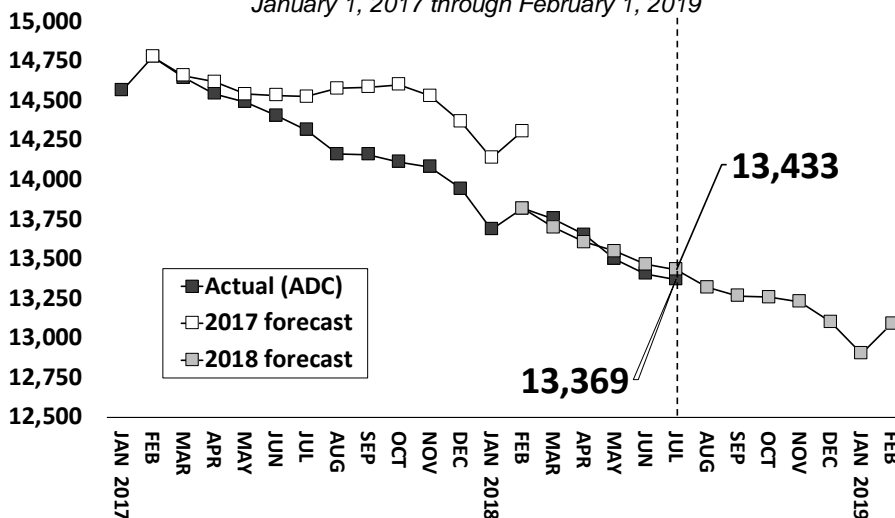


Chart 2 - Criminal justice, monthly counts and flows

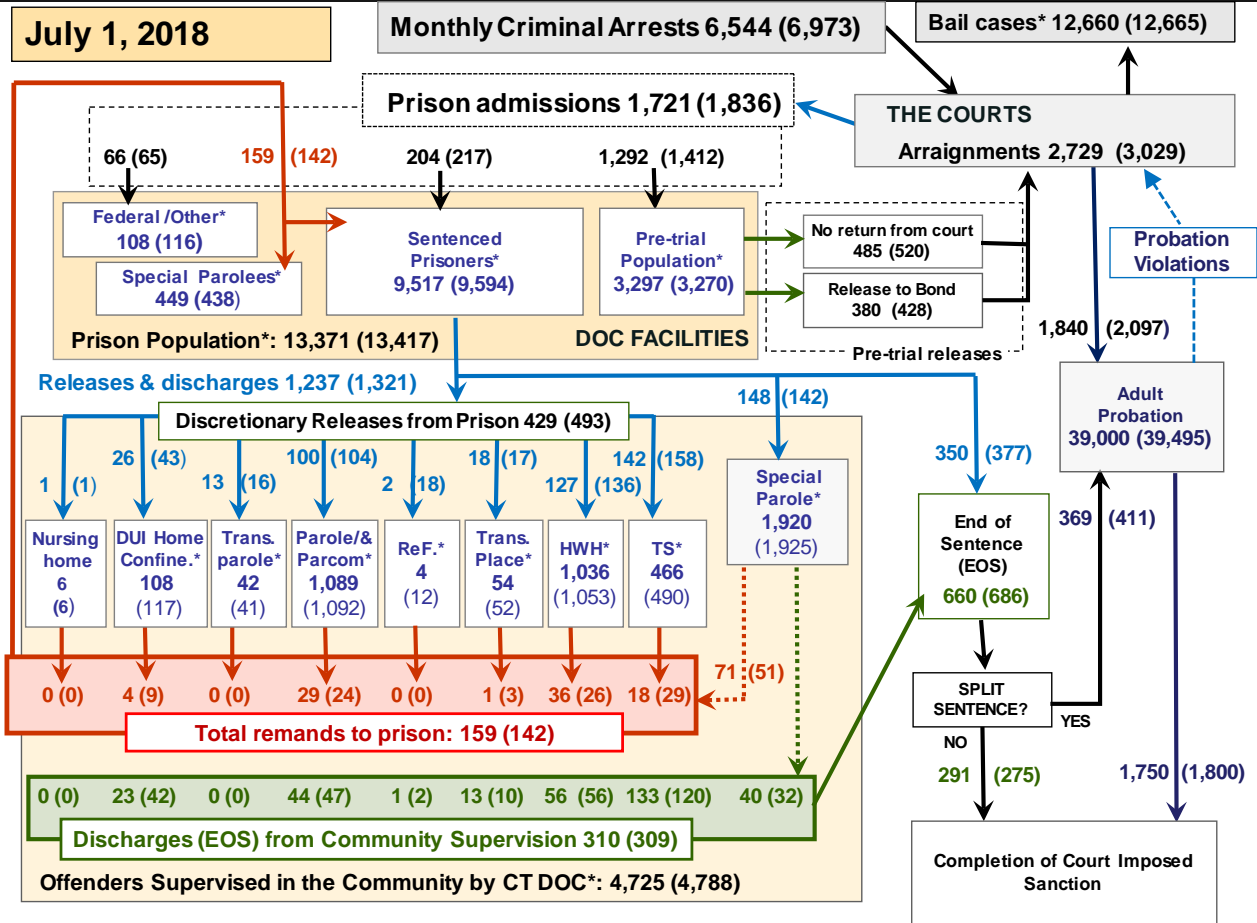


Chart 2 contains monthly operations data for June 2018 and daily counts reported on July 1, 2018. Asterisks (*) indicate the daily count on July 1st. Figures for last month are enclosed by parentheses. Sources: Arrests - CRMVS, Court and probation data - CSSD, all other data - CT DOC. Note: Some Judicial Branch data this month is estimated.

Chart 2a – Assaults on DOC staff

Facility	2008	2009	2010	2011	2012	2013	2014	2015	2016	2017
Garner	63	21	45	23	24	38	36	24	27	20
MacDougall	8	14	6	12	19	17	19	18	18	12
Manson	17	21	15	9	12	8	6	12	5	1
Cheshire	5	12	11	4	9	8	7	10	3	2
Robinson	11	8	7	8	6	6	4	2	2	5
Willard	3	4	2	1	0	3	3	4	4	2
Brooklyn	1	1	1	0	1	1	3	0	0	0
Total, all facilities	283	253	205	165	195	205	176	183	158	132
Population, July 1st	19,413	18,891	18,431	17,631	16,591	16,988	16,551	16,025	15,342	14,335

In light of three serious assaults on staff in recent months at the Manson Y.I., OPM obtained data from the DOC in an attempt to better understand and contextualize these incidents.

The table above shows the decreasing number of assaults on staff reported from 2008 to 2017. Also shown is data from six facilities whose populations held steady over the time period and MYI. The population at these facilities fell by an average of 3% over the last decade, yet staff assaults fell by 61%.

Between 2008 and 2017, the number of assaults, across all prisons and jails, fell by 53%. During the same period, the prison population dropped by 26%. Between 2008 and 2017, the facility with the most assaults, Garner CI, saw a two-thirds reduction (63 to 20).

This analysis is not intended to diminish the difficulty and potential dangerousness of the work of correctional staff, but to put recent events into a historical perspective.

Table 2 - First-of-month totals

	2018	2018	2018	2017	% Change	
	May 1	June 1	July 1	July 1	Monthly	Annual
DOC Facilities						
Federal/Other	124	116	108	136	-6.9%	-20.6%
Sentenced	9,719	9,594	9,517	10,570	-0.8%	-10.0%
Special Parole	438	438	449	466	2.5%	-3.6%
Pre-trial	3,233	3,270	3,297	3,163	0.8%	4.2%
Total	13,514	13,418	13,371	14,335	-0.4%	-6.7%
DOC Community						
Transfer Parole	33	41	42	21	-	-
Parole/ Parcom Total	1,087	1,092	1,089	1,131	-0.3%	-3.7%
Parole	919	932	924	968	-0.9%	-4.5%
Parcom @ CT	168	160	165	163	3.1%	1.2%
Furlough	9	12	4	22	-	-
Trans Placement	55	52	54	51	3.8%	5.9%
DUI/Home confine.	126	117	108	106	-7.7%	1.9%
Halfway House Total	1,051	1,053	1,036	969	-1.6%	6.9%
Comm Release	508	519	504	471	-2.9%	7.0%
TS	45	46	50	56	8.7%	-10.7%
Parole	161	147	149	141	1.4%	5.7%
Transfer Parole	1	3	5	4	-	-
Special Parole	336	334	328	297	-1.8%	10.4%
TS	490	490	466	580	-4.9%	-19.7%
Nursing home	7	6	6	8	-	-
Special Parole	1,898	1,925	1,920	1,755	-0.3%	9.4%
Total	4,756	4,788	4,722	4,643	-1.4%	1.7%

Table 2a - Admissions, releases & discharges

	2017	2018	2018	2017	% Change	
	April	May	June	June	Monthly	Annual
Admissions						
Federal/Other	72	65	66	84	1.5%	-21.4%
Remands	135	142	159	155	12.0%	2.6%
DUI	5	9	4	5	-	-
Parole	20	24	29	28	20.8%	3.6%
Trans Plac/Furlough	1	3	1	2	-	-
HWH	29	26	36	30	38.5%	20.0%
TS	31	29	36	28	24.1%	28.6%
Special Parole	49	51	71	62	39.2%	14.5%
New Sentence	229	217	204	220	-6.0%	-7.3%
VOP	58	81	54	64	-33.3%	-15.6%
Pre-trial	1,355	1,412	1,292	1,431	-8.5%	-9.7%
Total	1,791	1,836	1,721	1,890	-6.3%	-8.9%
Releases and discharges						
Transfer Parole	9	16	13	14	-	-
Parole	111	104	100	108	-3.8%	-7.4%
Furlough	6	18	2	21	-88.9%	-90.5%
Trans. Placement	23	17	18	36	5.9%	-50.0%
Home Confinement DU	38	43	26	42	-39.5%	-38.1%
HWH	129	136	127	157	-6.6%	-19.1%
TS	155	158	142	195	-10.1%	-27.2%
Special Parole	168	142	148	137	4.2%	8.0%
Nursing home	0	1	1	0	-	-
End of Sentence	633	686	660	720	-3.8%	-8.3%
Total	1,272	1,321	1,237	1,430	-6.4%	-13.5%
Pre-trial Releases*						
From Court	546	520	485	513	-6.7%	-5.5%
Release to Bond	389	428	380	427	-11.2%	-11.0%

* Totals reflect events, not individual offenders

DOC - Community Release Unit (CRU)

Table 3 - Case reviews and release metrics

	Cases				Approval
	Reviewed	Approved	Denied	Continued	Rate
March	713	344	101	107	48%
Apr.	741	365	108	105	49%
May	701	331	123	96	47%
May '17	806	376	95	113	47%

Board of Pardons and Paroles

Table 4 - Parole hearings, new cases

	Parole Hearings	Paroles granted	Grant rate	Paroles granted, 2016	Paroles granted, 2015
Apr.	185	90	49%	102	101
May	161	93	58%	100	95
June	141	56	40%	87	90

Table 4a - Other BOPP actions

	Reparole from revocation	Reparole from rescission	Closed interest cases	Special parole cases	Transfer parole cases
Apr.	46	0	24	49	12
May	35	2	25	30	17
June	34	4	38	46	7
June '17	29	2	45	41	11

The pre-trial population

Table 5 - Bond ranges for pre-trial detainees

Bond amount	May 1, 2018	June 1, 2018	July 1, 2018	July 1, 2017
Less than \$20K	473	485	543	568
\$20K to < \$50K	468	470	504	483
\$50K to < \$100K	702	694	671	753
\$100K or higher	1,692	1,705	1,748	1,484
Persons w/bonds	3,335	3,354	3,466	3,288
Over \$1M	195	201	202	148

Table 5a - Pre-trial, weeks since admission

Weeks since last DOC admit	May 1, 2018	June 1, 2018	July 1, 2018	July 1, 2017
< 1 week	389	409	444	389
1 to < 3 weeks	326	329	330	374
3 to < 10 weeks	772	819	822	825
10 to < 30 weeks	931	882	936	911
30 wks or more	919	918	939	789
Pre-trial prisoners	3,337	3,357	3,471	3,288

Table 5b - Pre-trial admits, new offenders

	Apr. 2018	May 2018	June 2018	June 2017
Arrestments	2,837	3,029	2,729	2,961
Pre-trial Admits	1,355	1,412	1,292	1,431
New to DOC	338	369	315	393
% New	25%	26%	24%	27%

Court Support Services Division

Table 6 - The Jail Re-interview Program

	Pre-trial admissions	Offender interviews	Offenders released	Released last year
Apr.	1,355	937	335	417
May	1,412	985	331	515
June	1,292	924	334	499

Table 6a - Pre-trial bail and probation caseloads

	Pre-trial Bail Case Starts	Client Supv. Starts	Split Sentence Starts	Pre-trial bail cases
Apr.	2,070*	2,062	368	12,670*
May	2,065*	2,097	411	12,665*
June	2,060*	1,840	369	12,660*
June '17	2,251	2,038	391	12,666

Note: Figures published here are based on the operational data available at the time of publication. Data in subsequent issues may not agree.

Chart 3 – Prison population

First week of the month, avg. daily count (ADC)

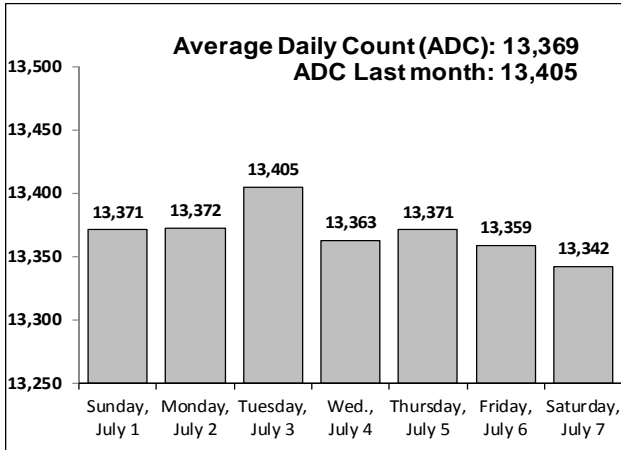


Chart 6 – Monthly DOC Admissions

May 2017 through June 2018

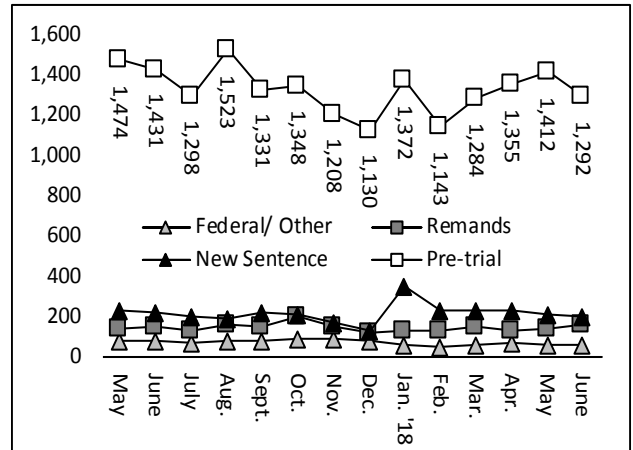


Chart 4 – Prison population, first-of-month

2015, 2016, 2017 and 2018

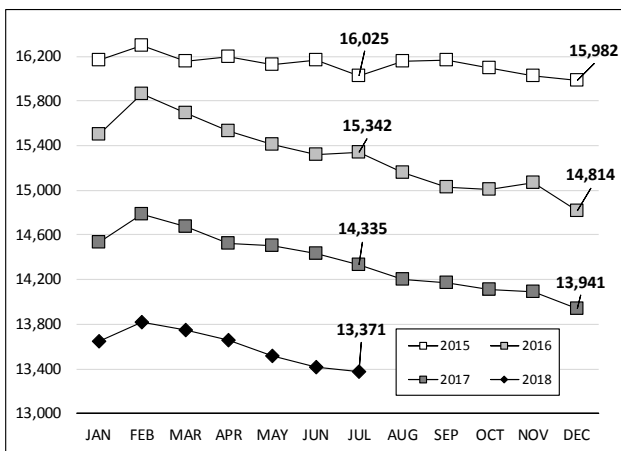


Chart 7 – Remands from community release

June 2018

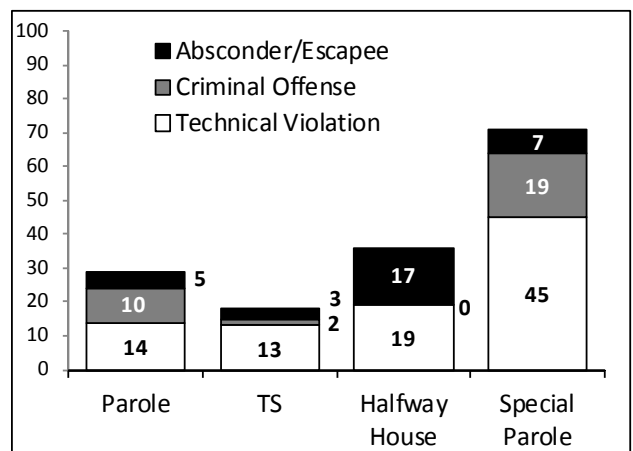


Chart 5 – Statewide criminal arrests

2017 and 2018

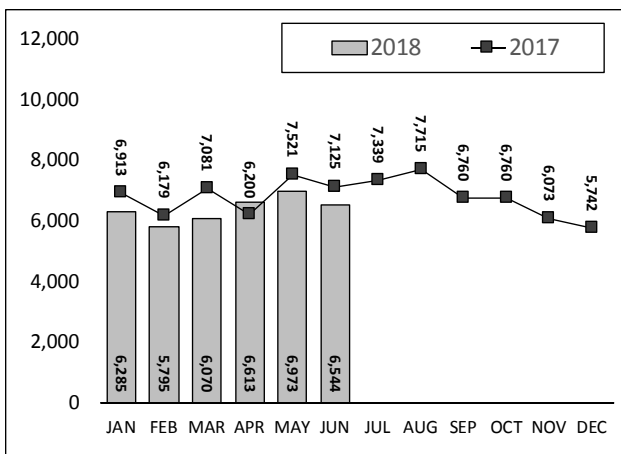
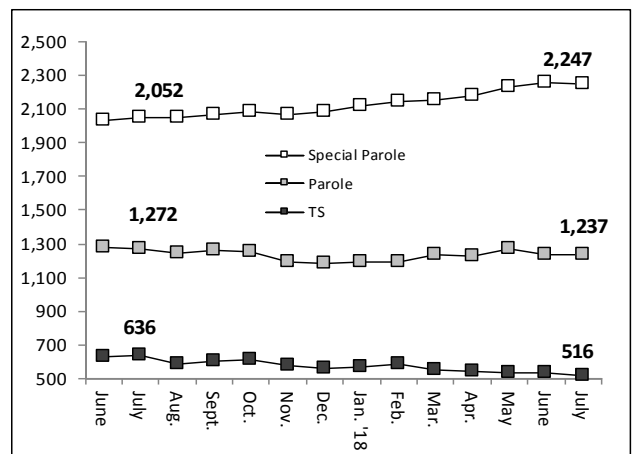


Chart 8 – DOC community supervision

May 1, 2017 through July 1, 2018



Note: Data for all charts, with the exception of Chart 5, was supplied by CT DOC. Data for Chart 5 are for new case starts in the state Criminal Motor Vehicle System (CRMVS). Chart 8 includes offenders in halfway houses.