

# OPM - Criminal Justice Policy & Planning Division

# Monthly Indicators Report

## Highlights

- During December, the prison population fell by nearly 300 inmates. On January 1<sup>st</sup>, 13,649 prisoners were held in state prisons and jails. A month earlier on December 1, there were 13,941 prisoners.
- Recently, the DOC passed a significant milestone. Just before Christmas the sentenced population dipped below 10,000 offenders, and remained there. The number of sentenced prisoners, which are the largest component of the prison population, has fallen by 36% from its peak of 15,429 in 2008. In 2008, the sentenced population alone was nearly 2000 inmates higher than the total facility population today.
- The sentenced population shrunk unexpectedly on January 7th when Jerry Mercado escaped from the, medium security, Carl Robinson Correctional Institute in Enfield, CT. The last escape on record was in 1993 when an inmate - at Carl Robinson CI – escaped from his outside clearance job. Due to its open layout, dormitory conditions and having the largest sentenced population in the system, CRCI poses an enormous security challenge.
- CT DOC Parole and Community Services plans to reduce the intensity of supervision for offenders who have demonstrated successful re-integration. Initially intended to target the special parole population, the opportunity for reduced reporting status will be extended to all offenders who have remained violation free on community supervision over three years and are deemed appropriate.

## Prison Population Forecast

In December, the average daily count fell by 256 inmates, representing a drop of 1.8% in course of one month. A dramatic decline is not out of the ordinary in December. The average decrease during the month in percentage terms in just over 1.5% during the last decade. What is significant is that the prison population would hold form despite falling throughout the year.

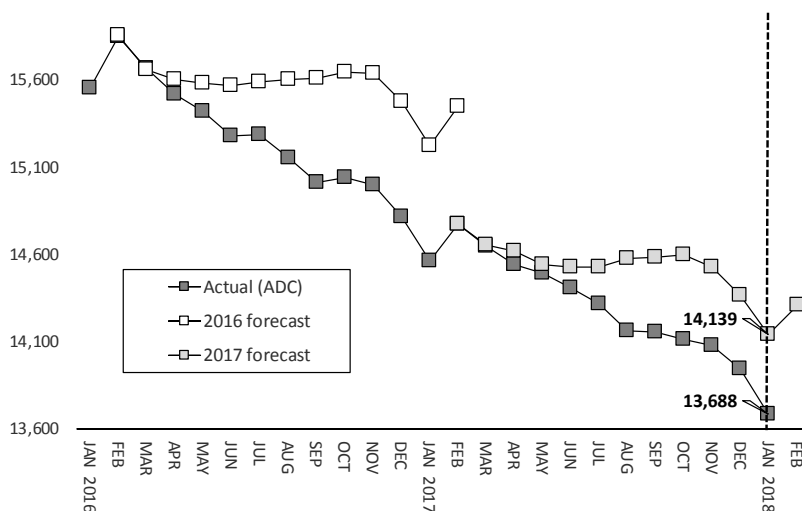
The fact that the system can shrink so substantially in one month's time after yielding 4.3% of its size throughout the year points to the impact inputs play in the functioning of the system. Both sentenced and pretrial admits were down in December relative to both November 2017 and December 2016. This suggests a stable system, contracting in a reasonable way.

We will soon close out last year's forecast and prepare one for the coming year. In order to produce a useful forecast, we take stock of the performance the most recent forecasts have had. The two most recent forecasts have overestimated the prison population, but this is where your writer blames DOC efficiency for overshooting the forecast. In early 2015, 83% of sentenced offenders were in facilities; in 2017 – 80%. That 3% difference equates to 440 offenders – very to close the forecast gap.

	Avg. Daily Count	OPM 2017 Forecast	Inmate difference
JAN '17	14,565	-	-
FEB	14,776	14,776	-
MAR	14,646	14,658	12
APR	14,543	14,618	75
MAY	14,491	14,542	51
JUN	14,406	14,532	126
JUL	14,316	14,526	210
AUG	14,162	14,577	415
SEP	14,158	14,586	428
OCT	14,112	14,600	488
NOV	14,081	14,531	450
DEC	13,944	14,367	423
JAN '18	13,688	14,139	451
FEB	-	14,308	-

*Avg. Daily Count (ADC) for 1st week of month*

**Chart 1 – Actual prison population against the OPM forecasts**  
January 1, 2016 through February 1, 2018



## Chart 2 - Criminal justice, monthly counts and flows

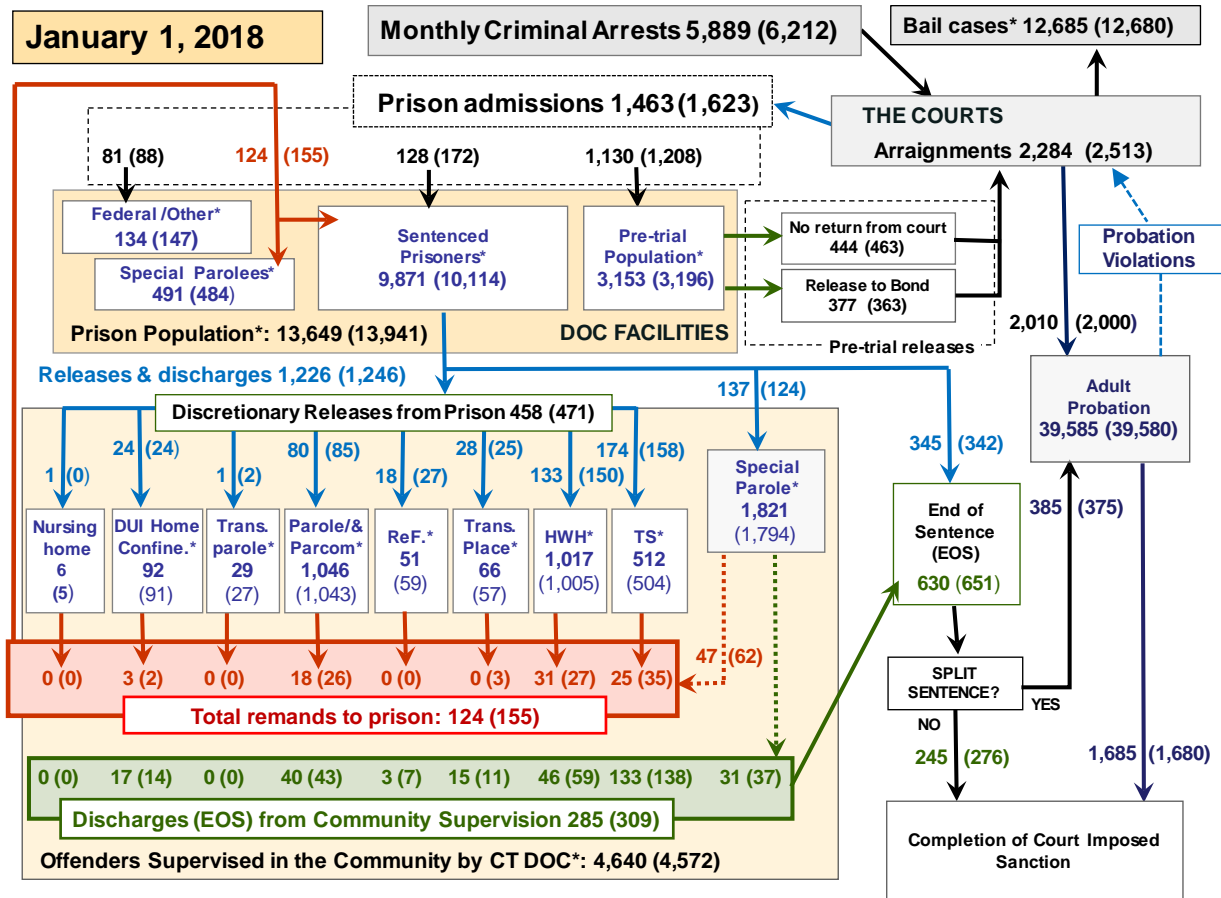
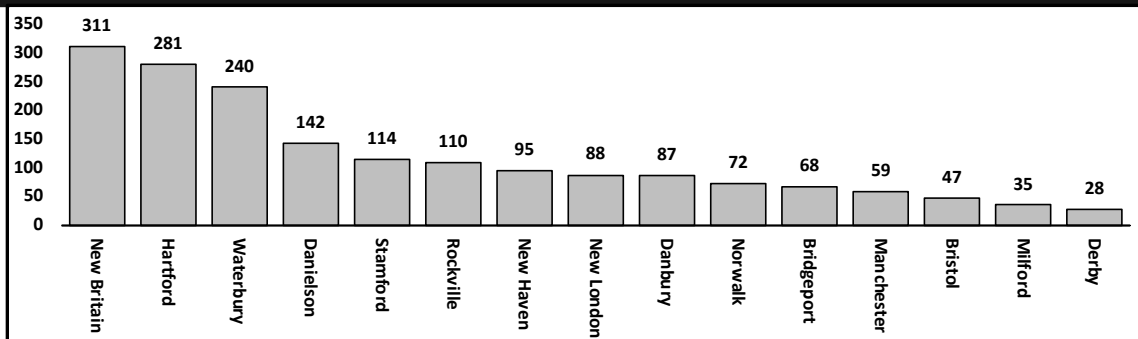


Chart 2 contains monthly operations data for December 2017 and daily counts reported on January 1, 2018. Asterisks (\*) indicate the daily count on January 1<sup>st</sup>. Figures for last month are enclosed by parentheses. Sources: Arrests - OBTS, Court and probation data - CSSD, all other data - CT DOC. Note: Judicial Branch data this month is estimated.

## Chart 2a – Special parole sentencing by court location



Over the past two years, 1428 individuals on 1866 cases were sentenced to a term of incarceration that included special parole. Shown are the top 15 court locations (some may contain both a JD and GA) ranked by the number of sentences that included special parole.

Looking only at the raw counts alone misses the fact that these courts handle different amounts of business. Measuring workload - albeit crudely by arraignments - the contrast remains pronounced. New Britain had 40% fewer arraignments than Bridgeport (3950 vs 6424), yet but five times more special parole sentences (311 vs 68).

Not shown are the 138 different charges associated with special parole sentences. The top three charges were: Possession with intent to sell, sale of hallucinogen/narcotic, and burglary 3<sup>rd</sup> degree. While serious offenses, not necessarily the violence expected with special parole sentences.

Given the degree to which courts vary and the array of charges associated with this sentencing option, legislative changes may be on the horizon.

This analysis is preliminary and limited. As such, we plan to explore this topic in more detail in the future.

**Table 2 - First-of-month totals**

	2017	2017	2018	2017	% Change	
	Nov. 1	Dec. 1	Jan. 1	Jan. 1	Monthly	Annual
<b>DOC Facilities</b>						
Federal/Other	146	147	134	132	-8.8%	1.5%
Sentenced	10,246	10,114	9,871	10,748	-2.4%	-8.2%
Special Parole	482	484	491	458	1.4%	7.2%
Pre-trial	3,214	3,196	3,153	3,194	-1.3%	-1.3%
<b>Total</b>	<b>14,088</b>	<b>13,941</b>	<b>13,649</b>	<b>14,532</b>	<b>-2.1%</b>	<b>-6.1%</b>
<b>DOC Community</b>						
Transfer Parole	27	27	29	0	-	-
Parole/ Parcom Total	1,048	1,043	1,046	1,194	0.3%	-12.4%
Parole	890	887	891	1,020	0.5%	-12.6%
Parcom @ CT	158	156	155	174	-0.6%	-10.9%
Furlough	54	59	51	24	-13.6%	112.5%
Trans Placement	55	57	66	71	15.8%	-7.0%
DUI/Home confine.	87	91	92	130	1.1%	-29.2%
Halfway House Total	1,006	1,005	1,017	929	1.2%	9.5%
Comm Release	515	519	515	508	-0.8%	1.4%
TS	56	55	55	45	0.0%	22.2%
Parole	145	139	144	126	3.6%	14.3%
Transfer Parole	3	2	1	0	-	-
Special Parole	287	290	302	249	4.1%	21.3%
TS	519	504	512	601	1.6%	-14.8%
Nursing home	5	5	6	9	-	-
Special Parole	1,784	1,794	1,821	1,630	1.5%	11.7%
<b>Total</b>	<b>4,585</b>	<b>4,585</b>	<b>4,640</b>	<b>4,588</b>	<b>1.2%</b>	<b>1.1%</b>

**Table 2a - Admissions, releases & discharges**

	2017	2017	2017	2016	% Change	
	Oct.	Nov.	Dec.	Dec.	Monthly	Annual
<b>Admissions</b>						
Federal/Other	94	88	81	68	-8.0%	19.1%
Remands	199	155	124	145	-20.0%	-14.5%
DUI	6	2	3	3	50.0%	0.0%
Parole	38	26	18	26	-30.8%	-30.8%
Trans Plac/Furlough	0	2	0	3	-	-
HWH	43	27	31	27	14.8%	14.8%
TS	26	35	25	21	-28.6%	19.0%
Special Parole	84	62	47	65	-24.2%	-27.7%
New Sentence	209	172	128	141	-25.6%	-9.2%
VOP	83	45	41	51	-8.9%	-19.6%
Pre-trial	1348	1208	1130	1205	-6.5%	-6.2%
<b>Total</b>	<b>1,850</b>	<b>1,623</b>	<b>1,463</b>	<b>1,559</b>	<b>-9.9%</b>	<b>-6.2%</b>
<b>Releases and discharges</b>						
Transfer Parole	3	2	1	4	-50.0%	-
Parole	66	85	80	93	-5.9%	-14.0%
Furlough	34	27	18	20	-33.3%	-10.0%
Trans. Placement	30	25	28	25	12.0%	12.0%
Home Confinement DU	24	24	24	40	0.0%	-40.0%
HWH	162	150	133	157	-11.3%	-15.3%
TS	163	158	174	185	10.1%	-5.9%
Special Parole	115	124	137	102	10.5%	34.3%
Nursing home	0	0	1	0	-	-
End of Sentence	650	651	630	713	-3.2%	-11.6%
<b>Total</b>	<b>1,247</b>	<b>1,246</b>	<b>1,226</b>	<b>1,339</b>	<b>-1.6%</b>	<b>-8.4%</b>
<b>Pre-trial Releases*</b>						
From Court	514	463	444	458	-4.1%	-3.1%
Release to Bond	392	363	377	410	3.9%	-8.0%

\* Totals reflect events, not individual offenders

**DOC - Community Release Unit (CRU)**

**Table 3 - Case reviews and release metrics**

	Cases				Approval Rate
	Reviewed	Approved	Denied	Continued	
October	768	347	137	105	45%
November	735	364	109	91	50%
December	680	332	113	107	49%
Dec. '16	841	378	148	132	45%

**Board of Pardons and Paroles**

**Table 4 - Parole hearings, new cases**

	Parole Hearings	Paroles granted	Grant rate	Paroles granted, 2016	Paroles granted, 2015
Oct.	179	109	61%	67	93
Nov.	185	91	49%	97	96
Dec.	161	87	54%	95	122

**Table 4a - Other BOPP actions**

	Reparole from revocation	Reparole from rescission	Closed interest cases	Special parole cases	Transfer parole cases
Oct.	34	1	12	36	1
Nov.	25	3	7	30	0
Dec.	28	3	16	35	4
Dec. '16	36	3	44	31	4

**The pre-trial population**

**Table 5 - Bond ranges for pre-trial detainees**

Bond amount	Nov. 1, 2017	Dec. 1, 2017	Jan. 1, 2018	Jan. 1, 2017
Less than \$20K	556	528	504	580
\$20K to < \$50K	530	498	503	551
\$50K to < \$100K	709	703	706	700
\$100K or higher	1,579	1,580	1,643	1,441
Persons w/bonds	3,374	3,309	3,356	3,272
Over \$1M	161	172	178	147

**Table 5a - Pre-trial, weeks since admission**

Weeks since last DOC admit	Nov. 1, 2017	Dec. 1, 2017	Jan. 1, 2018	Jan. 1, 2017
< 1 week	443	405	327	345
1 to < 3 weeks	339	339	314	305
3 to < 10 weeks	798	808	1,103	797
10 to < 30 weeks	979	990	745	1,048
30 wks or more	815	828	868	780
Pre-trial prisoners	3,374	3,309	3,357	3,275

**Table 5b - Pre-trial admits, new offenders**

	Oct. 2017	Nov. 2017	Dec. 2017	Dec. 2016
Arraignments	2,867	2,513	2,284	2,571
Pre-trial Admits	1,348	1,208	1,130	1,205
New to DOC	354	307	304	347
% New	26%	25%	27%	29%

**Court Support Services Division**

**Table 6 - The Jail Re-interview Program**

	Pre-trial admissions	Offender interviews	Offenders released	Released last year
Oct.	1,348	1,067	380	428
Nov.	1,208	1,003	367	432
Dec.	1,130	908	330	474

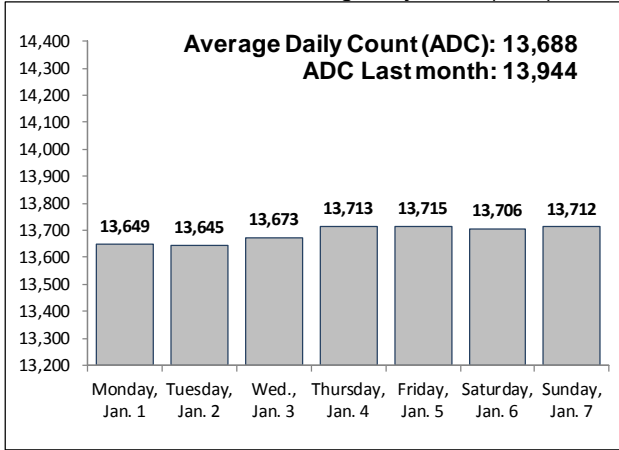
**Table 6a - Pre-trial bail and probation caseloads**

	Pre-trial Bail Case Starts	Client Supv. Starts	Split Sentence Starts	Pre-trial bail cases
Oct.	2,090*	2,010*	380*	12,690*
Nov.	2,080*	2,000*	375*	12,680*
Dec.	2,075*	2,010*	385*	12,685*
Dec. 2016	1,986	2,042	395	13,079

Note: Figures published here are based on the operational data available at the time of publication. Data in subsequent issues may not agree.

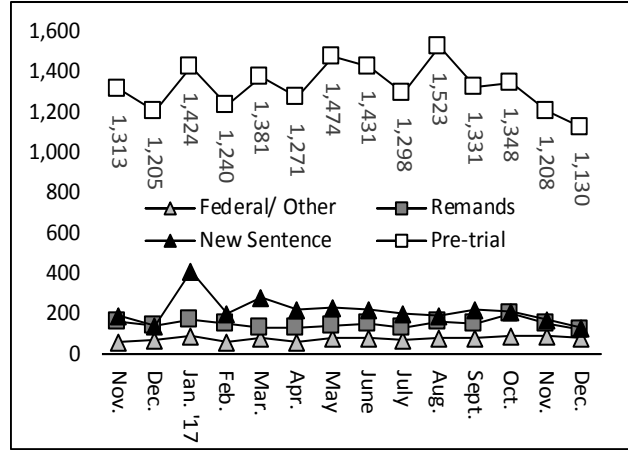
**Chart 3 – Prison population**

First week of the month, avg. daily count (ADC)



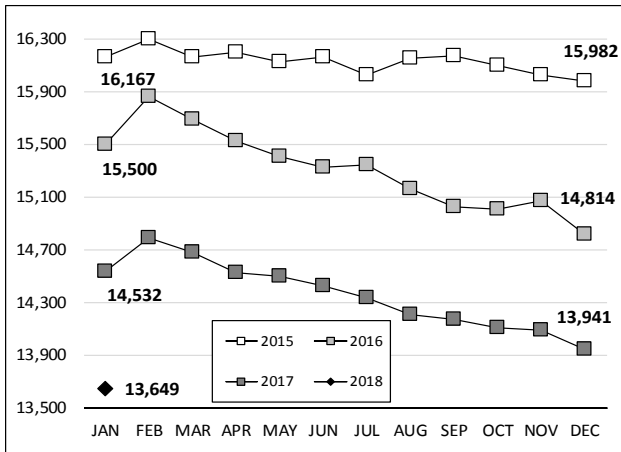
**Chart 6 – Monthly DOC Admissions**

Nov. 2016 through Dec. 2017



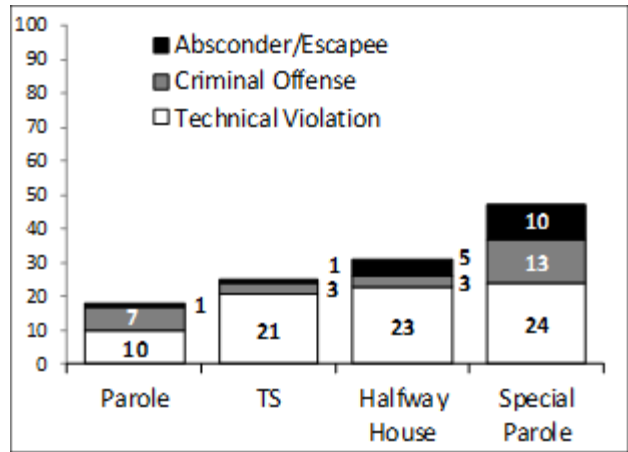
**Chart 4 – Prison population, first-of-month**

2015, 2016 and 2017



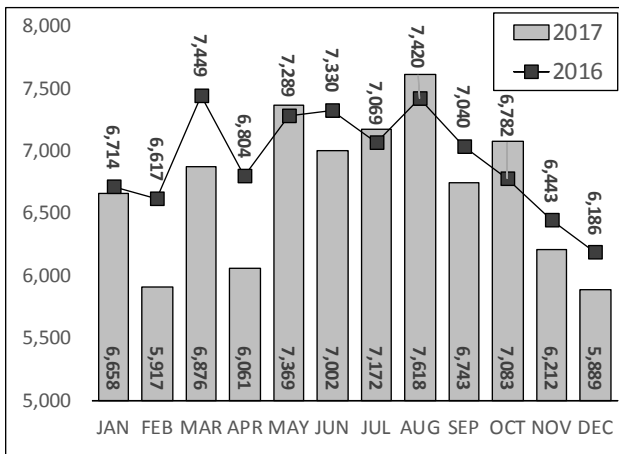
**Chart 7 – Remands from community release**

December 2017



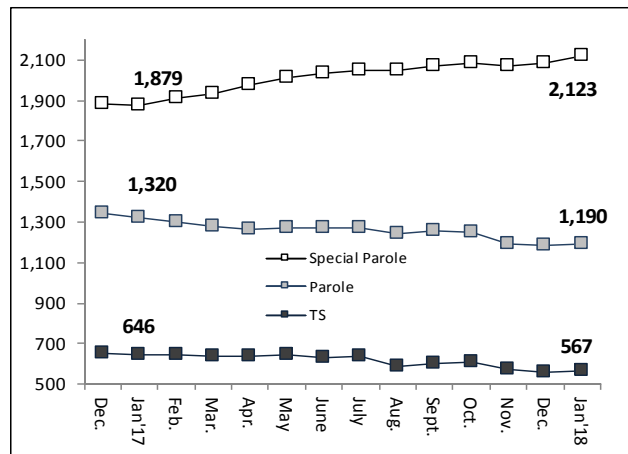
**Chart 5 – Statewide criminal arrests**

2016 and 2017



**Chart 8 – DOC community supervision**

December 1, 2016 through January 1, 2018



Note: Data for all charts, with the exception of Chart 5, was supplied by CT DOC. Data for Chart 5 are for new case starts in the state Offender-Based Tracking System (OBTS). Chart 8 includes offenders in halfway houses.