

OPM - Criminal Justice Policy & Planning Division

Monthly Indicators Report

Highlights

- On September 1, 2017, 14,176 people were incarcerated in CT state prisons and jails. After dropping on a near-consistent basis since February, the prison population held stable during the month of August.
- The pre-trial prison population jumped by 95 prisoners during August. Pre-trial admissions during the month rose by 225 compared to the July figure. Statewide arrests were also up considerably compared to July (see chart 6)
- CSSD upgraded its reporting system this month. As a result, this issue of the Monthly will only publish estimates of Judicial Branch operations. We anticipate that we will have actual operational figures in next month's issue.
- The size of the sentenced prison population has dropped to a level not seen since the early 1990s (see chart 2a).
- The Board of Pardons and Paroles is reforming both the processes and the standards that govern parole revocations. The Board recently hired a staff attorney who is reviewing internal operations, balancing public safety with due process concerns. These efforts were, in part, driven by an analysis of parole revocations conducted last year by the Yale Legal Clinic.
- Despite this month's seeming halt to the dropping numbers of prisoners, OPM believed that the prison population will drop below 14,000 in the coming months. Between this time last year and the end of 2016, the state prison population sank by almost 500 inmates.

Prison Population Forecast

After dropping for six consecutive months, the total inmate count in state prisons stalled during the month of August. Between the first of last month and the first of this month, the DOC population declined by only 28 prisoners. Measured by the Average Daily Count (ADC) of prisoners during the first week of the month, the count dropped by only four prisoners.

Although the total prison population held steady during August there was significant churn within the system. The number of sentenced prisoners, whose numbers have been dropping steadily for more than a year, continues to shrink. During August the DOC's sentenced population contracted by 124 prisoners to 10,324. The last time the sentenced-prisoner total was lower was in August 1993.

TABLE 1 – Prison Population Forecast

	Avg. Daily Count	OPM 2017 Forecast	Inmate difference
JAN '17	14,565	-	-
FEB	14,776	14,776	-
MAR	14,646	14,658	12
APR	14,543	14,618	75
MAY	14,491	14,542	51
JUN	14,406	14,532	126
JUL	14,316	14,526	210
AUG	14,162	14,577	415
SEP	14,158	14,586	428
OCT	-	14,600	-
NOV	-	14,531	-
DEC	-	14,367	-
JAN '18	-	14,139	-
FEB	-	14,308	-

Avg. Daily Count (ADC) for 1st week of month

During August the state reported a jump in arrests and in pre-trial prison admittances. There were 1,523 pre-trial admits in August compared to 1,298 in July, a 17% increase. As a result, the total pre-trial population grew by 95 prisoners during the month. We believe that the stall we observed this month in the size of the prison population reflects what remains of the old "summer bump," when increased arrests typically led to an increased prison population. Now with the sentenced population falling away, spot increases in pre-trial admits are only acting as a brake on a steadily shrinking system.

Chart 1 – Actual prison population against the OPM forecasts
January 1, 2016 through February 1, 2018

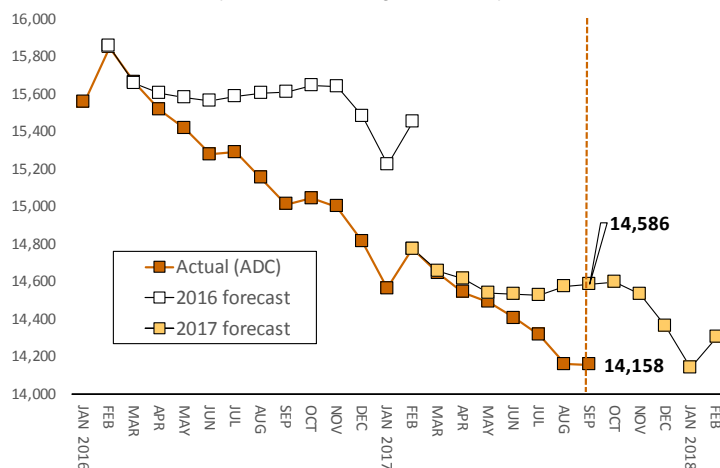


Chart 2 - Criminal justice, monthly counts and flows

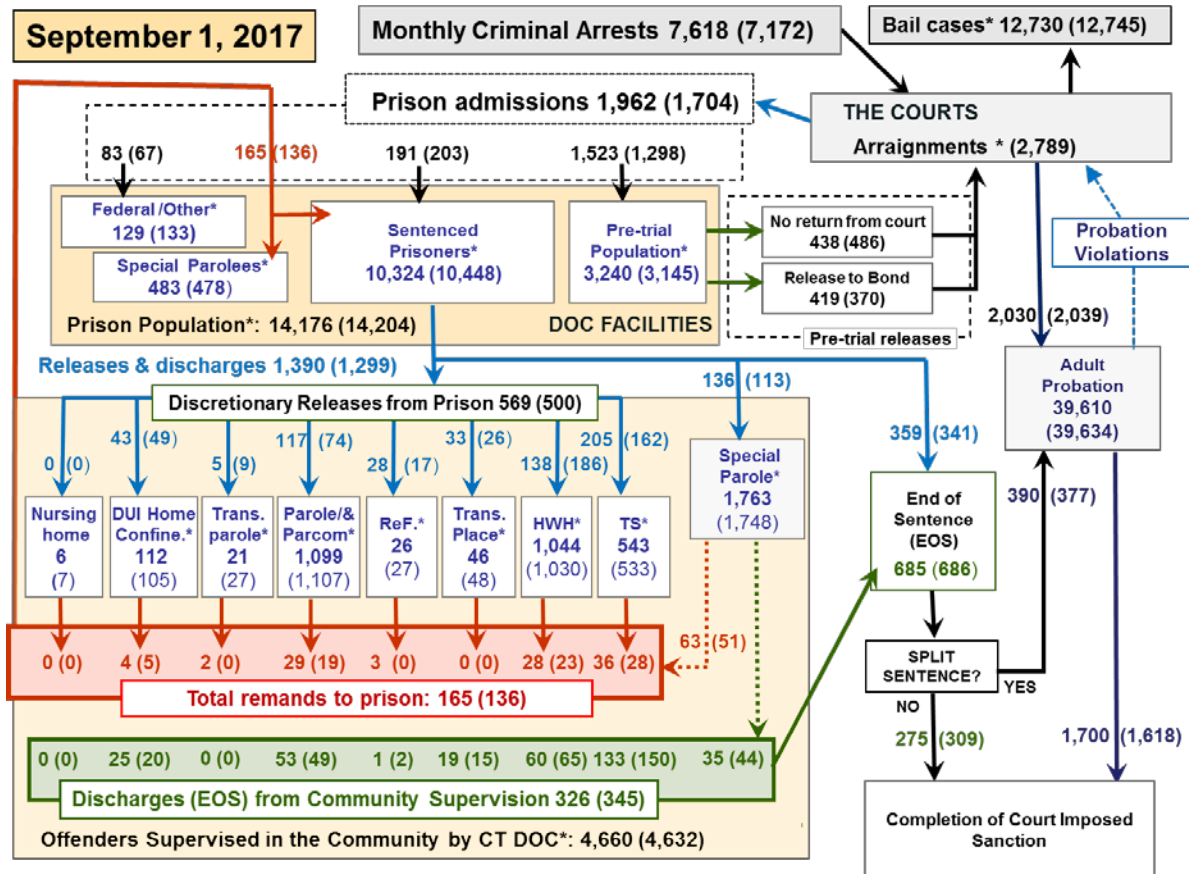
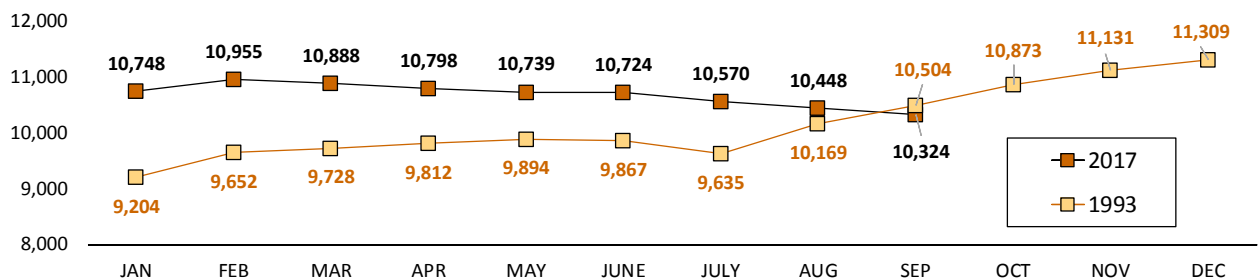


Chart 2 contains monthly operations data for August 2017 and daily counts reported on September 1, 2017. Asterisks (*) indicate the daily count on September 1st. Figures for last month are enclosed by parentheses. Sources: Arrests - OBTS, Court and probation data - CSSD, all other data - CT DOC.

Chart 2a – The sentenced prison population, 1993 vs. 2017



The number of sentenced prisoners has been declining for several years. In the Highlights section we reported that the number of sentenced prisoners was at its lowest level since 1993. Chart 2a compares the steady drop in the sentenced-prisoner population this year to 1993 when the number of sentenced prisoners was surging. Between January 1, 1993 and January 1, 1994, the sentenced population grew by 21.8%.

Truth-in-sentencing legislation, the elimination of Supervised-Home-Releases and a flurry of prison construction fueled a rapid expansion in the size of Connecticut's prison population. In March 2003, the number of sentenced prisoners hit its historic peak of 15,600. Between 1992 and 1994, the DOC added approximately 2,800 additional prison beds as Walker CI, Garner CI, MacDougall CI and

Cybulski CI all came on-line. The state's total prison population would eventually peak at 19,893 in February 2008.

As the state's prison population contracted, so too did the prison system. Since January 1, 2010, the CT DOC has taken almost 4,500 prison beds off line. Webster CI, with approximately 590 beds, closed in January 2010. Gates CI and Bergin CI both closed in 2011. Together they housed over 2,000 inmates.

Since 2015, 1,600 prison beds have been eliminated with the shuttering of the Fairmont Building at Bridgeport CC, the Niantic Annex, The Qs at Osborn CI and the Radgowski Annex.

Table 2 - First-of-month totals

	2017	2017	2017	2016	% Change	
	July 1	Aug. 1	Sept. 1	Sept. 1	Monthly	Annual
DOC Facilities						
Federal/Other	136	133	129	155	-3.0%	-16.8%
Sentenced	10,570	10,448	10,324	11,182	-1.2%	-7.7%
Special Parole	466	478	483	449	1.0%	7.6%
Pre-trial	3,163	3,145	3,240	3,237	3.0%	0.1%
Total	14,335	14,204	14,176	15,023	-0.2%	-5.6%
DOC Community						
Transfer Parole	21	27	21	8	-	-
Parole/ Parcom Total	1,131	1,107	1,099	1,140	-0.7%	-3.6%
Parole	968	942	936	961	-0.6%	-2.6%
Parcom @ CT	163	165	163	179	-1.2%	-8.9%
Furlough	22	27	26	25	-3.7%	4.0%
Trans Placement	51	48	46	68	-4.2%	-32.4%
DUI/Home confine.	106	105	112	99	6.7%	13.1%
Halfway House Total	969	1,030	1,044	952	1.4%	9.7%
Comm Release	471	531	512	461	-3.6%	11.1%
TS	56	55	61	62	10.9%	-1.6%
Parole	141	139	160	180	15.1%	-11.1%
Transfer Parole	4	3	5	3	-	-
Special Parole	297	302	306	246	1.3%	24.4%
TS	580	533	543	574	1.9%	-5.4%
Nursing home	8	7	6	8	-	-
Special Parole	1,755	1,748	1,763	1,584	0.9%	11.3%
Total	4,643	4,632	4,660	4,458	0.6%	4.5%

Table 2a - Admissions, releases & discharges

	2016	2017	2017	2016	% Change	
	June	July	Aug.	Aug.	Monthly	Annual
Admissions						
Federal/Other	84	67	83	92	23.9%	-9.8%
Remands	155	136	165	163	21.3%	1.2%
DUI	5	5	6	4	20.0%	50.0%
Parole	28	29	29	30	0.0%	-3.3%
Trans Plac/Furlough	2	0	3	1	-	-
HWH	30	23	28	23	21.7%	21.7%
TS	28	28	36	38	28.6%	-5.3%
Special Parole	62	51	63	67	23.5%	-6.0%
New Sentence	220	203	191	252	-5.9%	-24.2%
VOP	64	61	61	74	0.0%	-17.6%
Pre-trial	1,431	1,298	1,523	1,541	17.3%	-1.2%
Total	1,890	1,704	1,962	2,048	15.1%	-4.2%
Releases and discharges						
Transfer Parole	14	9	5	3	-44.4%	-
Parole	108	74	117	118	58.1%	-0.8%
Furlough	21	17	28	24	64.7%	16.7%
Trans. Placement	36	23	33	18	43.5%	83.3%
Home Confinement DU	42	29	43	45	48.3%	-4.4%
HWH	157	186	138	153	-25.8%	-9.8%
TS	195	162	205	219	26.5%	-6.4%
Special Parole	137	113	136	121	20.4%	12.4%
Nursing home	0	0	0	0	-	-
End of Sentence	720	686	685	756	-0.1%	-9.4%
Total	1,430	1,299	1,390	1,457	7.0%	-4.6%
Pre-trial Releases*						
From Court	513	486	538	576	10.7%	-6.6%
Release to Bond	427	370	419	451	13.2%	-7.1%

* Totals reflect events, not individual offenders

DOC - Community Release Unit (CRU)

Table 3 - Case reviews and release metrics

	Cases				Approval
	Reviewed	Approved	Denied	Continued	Rate
June	850	423	125	123	50%
July	677	320	89	106	47%
August	806	378	119	134	47%
Aug. '16	928	456	146	137	49%

Board of Pardons and Paroles

Table 4 - Parole hearings, new cases

	Parole Hearings	Paroles granted	Grant rate	Paroles granted, 2016	Paroles granted, 2015
June	182	84	46%	90	70
July	177	87	49%	99	84
Aug.	147	70	48%	69	123

Table 4a - Other BOPP actions

	Reparole from revocation	Reparole from rescission	Closed interest cases	Special parole cases	Transfer parole cases
June	29	2	45	41	11
July	33	2	22	42	11
Aug.	53	4	19	34	7
Aug. '16	42	6	22	31	19

The pre-trial population

Table 5 - Bond ranges for pre-trial detainees

Bond amount	July 1, 2017	Aug 1, 2017	Sept. 1, 2017	Sept. 1, 2016
Less than \$20K	568	530	558	603
\$20K to <\$50K	483	495	549	589
\$50K to <\$100K	753	727	728	701
\$100K or higher	1,484	1,498	1,532	1,477
Inmates w/bonds	3,288	3,250	3,367	3,370
Over \$1M	148	151	158	150

Table 5a - Pre-trial, weeks since admission

Weeks since last DOC admit	July 1, 2017	Aug. 1, 2017	Sept. 1, 2017	Sept. 1, 2016
< 1 week	389	431	411	441
1 to < 3 weeks	374	324	404	364
3 to < 10 weeks	825	813	805	875
10 to < 30 weeks	911	901	929	927
30 wks or more	789	783	820	773
Pre-trial prisoners	3,288	3,252	3,369	3,380

Table 5b - Pre-trial admits, new offenders

	June 2017	July 2017	Aug. 2017	Aug. 2016
Arraignments	2,961	2,789	*	3,213
Pre-trial Admits	1,431	1,298	1,523	1,541
New to DOC	393	342	397	426
% New	27%	26%	26%	28%

* No data available

Court Support Services Division

Table 6 - The Jail Re-interview Program

	Pre-trial admissions	Offender interviews	Offenders released	Released last year
June	1,431	1,212	499	711
July	1,298	1,080	508	529
August	1,298	*	*	541

Table 6a - Pre-trial bail and probation caseloads

	Pre-trial Bail Case Starts	Client Supv. Starts	Split Sentence Starts	Pre-trial bail cases
June	2,251	2,038	391	12,666
July	2,192	2,039	377	12,745
Aug. 2017	2,100	2,030	390	12,730
Aug. 2016	2,408	2,220	532	13,357

* No data available

Note: Figures published here are based on the operational data available at the time of publication. Data in subsequent issues may not agree.

Chart 3 – Prison population

First week of the month, avg. daily count (ADC)

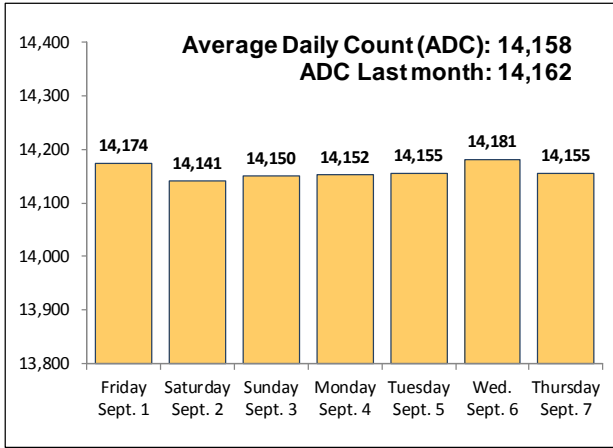


Chart 6 – Monthly DOC Admissions

July 2016 through August 2017

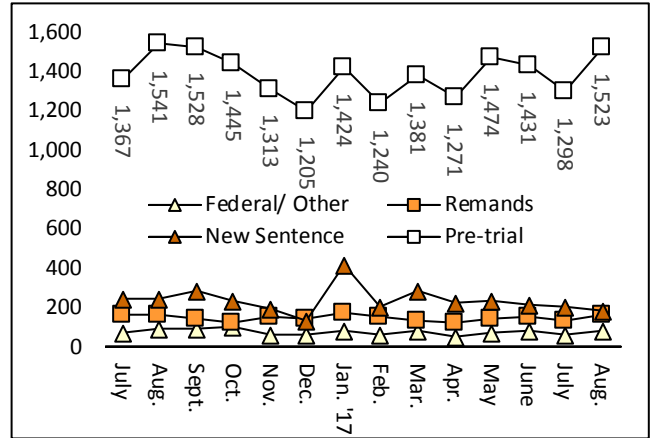


Chart 4 – Prison population, first-of-month

2015, 2016 and 2017

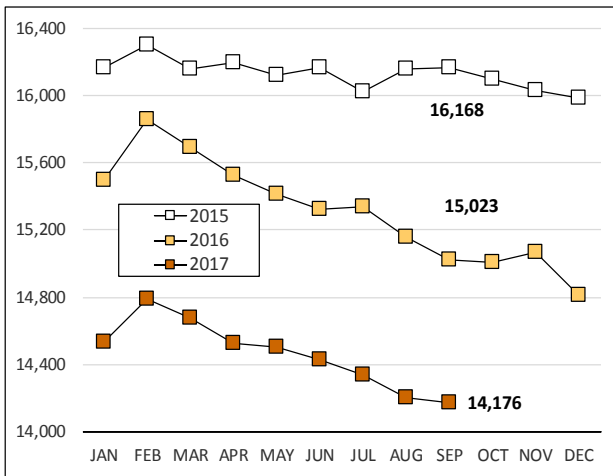


Chart 7 – Remands from community release

August 2017

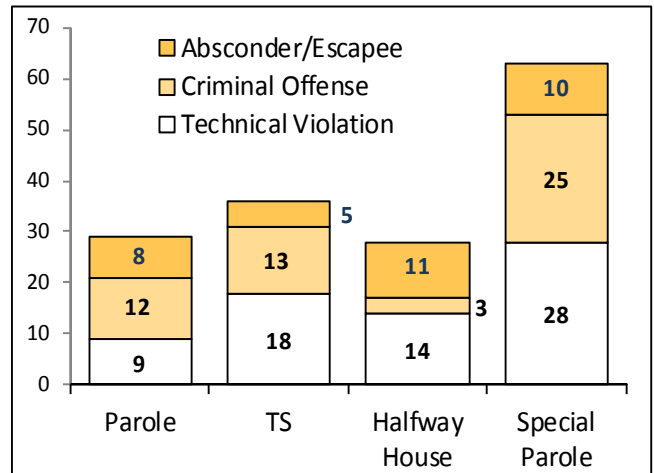


Chart 5 – Statewide criminal arrests

2016 and 2017

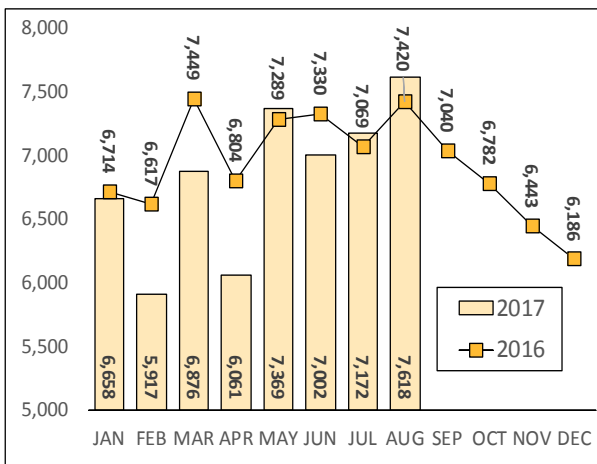
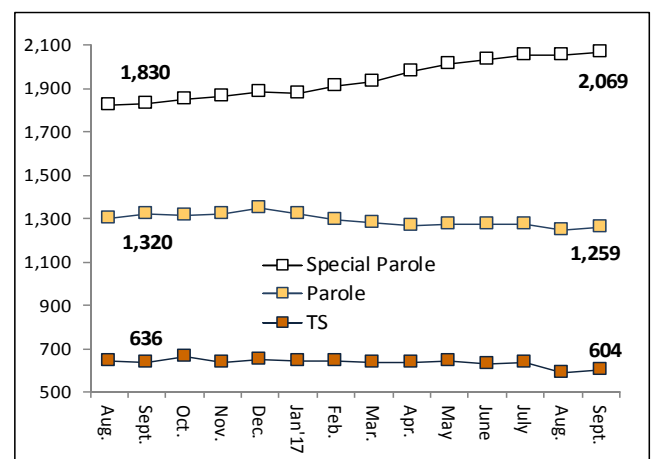


Chart 8 – DOC community supervision

August 1, 2016 through September 1, 2017



Note: Data for all charts, with the exception of Chart 5, was supplied by CT DOC. Data for Chart 5 are for new case starts in the state Offender-Based Tracking System (OBTS). Chart 8 includes offenders in halfway houses.