

OPM - Criminal Justice Policy & Planning Division

Monthly Indicators Report

Highlights

- On July 1, 2017, 14,355 people were incarcerated in CT. To find a lower number of prisoners it would be necessary to go back to September of 1994.
- There were 10,570 sentenced prisoners in DOC facilities on July 1st. The last time the system held fewer sentenced prisoners was in September 1993.
- During June, the total prison population dropped from 14,429 to 14,335, a reduction of 94 prisoners. Since the number of admits was down by only 41, it suggests that release and discharge mechanisms are continuing to operate efficiently.
- The size of the special parole population continues to be a concern. Over the last year the special parole population has increased by 14.3%. During the same period the parole population dropped by 3% and the TS population has declined by 7.7% (see chart 8).
- We have added more information to the already-crowded Chart 2. Last month, CSSD reported that there were 12,666 people who were awaiting disposition on a court case while on bail.
- As of July 1st judges were expected to stop setting cash-only bonds. OPM is currently monitoring the number of pre-trial prisoners incarcerated on cash-only bonds.
- OPM recently analyzed mortality rates among former prisoners. Using DPH death registry records and DOC data for inmates released in 2011, wide disparities in death rates between former prisoners and non-prisoners were observed (see page 2).

Prison Population Forecast

In February, OPM projected that the prison population would return to its normal pattern. In years past, summer brought warm weather, longer days, increased police activity and a subsequent increase in the prison population. To date, this has not happened. As in 2016, we did not expect an unabated – month-over month- drop in the prison population through the summer months (see chart 1).

TABLE 1 – Prison Population Forecast

	Avg. Daily Count	OPM 2017 Forecast	Inmate difference
JAN '17	14,565	-	-
FEB	14,776	14,776	-
MAR	14,646	14,658	12
APR	14,543	14,618	75
MAY	14,491	14,542	51
JUN	14,406	14,532	126
JUL	14,316	14,526	210
AUG	-	14,577	-
SEP	-	14,586	-
OCT	-	14,600	-
NOV	-	14,531	-
DEC	-	14,367	-
JAN '18	-	14,139	-
FEB	-	14,308	-

Avg. Daily Count (ADC) for 1st week of month

The prison population has always had major two components: sentenced prisoners and pre-trial detainees. This month, the number of sentenced prisoners was the lowest since September 1993. This is problematic for forecasters since models of the CT prison system are based largely on

the performance measures since 2000. It appears that prison population trends prior to 2016 are no longer the bell weather they once were.

We suspect that the continuing drop in the prison count reflects a confluence of factors. First, both arrests and prison admits have been declining for some time. The result: fewer sentenced offenders and fewer pretrial offenders. Equally important is the increased efficiency on the back end of the system, i.e., discretionary releases for both pre-trial and sentenced prisoners, which has been improving. At its current pace, we believe the population could dip below 14,000 by year's end.

Chart 1 – Actual prison population against the OPM forecasts

January 1, 2016 through February 1, 2018

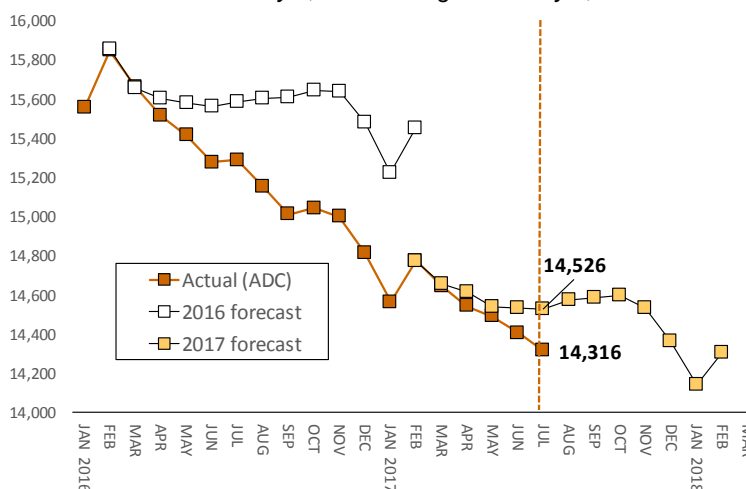


Chart 2 - Criminal justice, monthly counts and flows

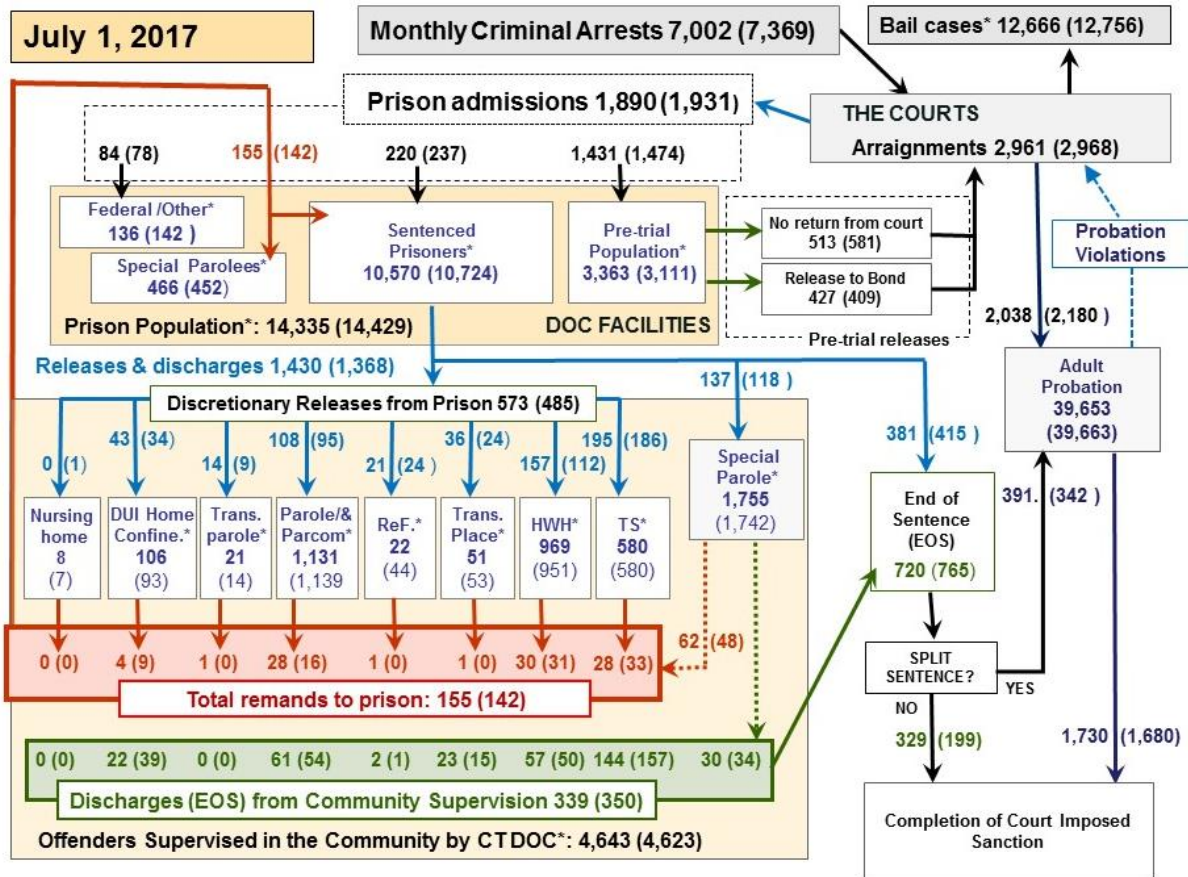


Chart 2 contains monthly operations data for June 2017 and daily counts reported on July 1, 2017. Asterisks (*) indicate the daily count on July 1st. Figures for last month are enclosed by parentheses. Sources: Arrests - OBTS, Court and probation data - CSSD, all other data - CT DOC.

Mortality among former CT prisoners

Last month, we reported on high concentrations of drug overdose deaths among former prisoners. In 2016, for example, 52% of people that died of a drug overdose in CT had, at some point, been an inmate at the CT DOC. Following up on these findings, OPM requested death registry data from the Department of Public Health (DPH) for all deaths between 2011 to the end of 2016. In the data we were able to identify 524 sentenced inmates who had been released or discharged from prison in 2011.

In our analysis, we observed that former prisoners – particularly those between the ages of 20 to 49, were much more likely to die from either a drug overdose or a homicide than the general population. Although it might seem reasonable that ex-convicts exhibit higher rates for these types of deaths, the alarming disparity in death rates that we witnessed was a major surprise.

Our analysis computed deaths per 10,000 persons over a 5-years period. 2010 U.S. Census data was used as the baseline for the non-prison population. The base population for prisoners was derived from a DOC-generated list of 15,890 sentenced prisoners who were released or discharged in 2011.

The analysis revealed that race/ethnicity was highly correlated with the cause-of-death. Among white prisoners aged 30-39, for example, 60.5% of the prisoners who died, succumbed to an overdose. Among black prisoners who died, in the same age range, 65.2% were victims of homicide.

Among all 30-39 year olds in the state, the 5-year homicide rate between 2011 and 2016 was 3.6 per 10,000 people. Among blacks, however, the rate was over 4 times higher at 16.6 per 10,000. Among former black prisoners, the homicide rate was a staggering 89.7 per 10,000. During the same period, the statewide overdose death rates for 30 to 39 year olds was 17.9 deaths per 10,000. Among whites alone, the overdose rate was 23.1 per ten thousand. Among former white prisoners, however, the rate from overdose deaths was over 7 times higher at 182.5 deaths per 10,000 people.

In the coming months OPM will publish more thorough findings on mortality among former prisoners. While there have been some recent efforts to address the problem of opioid abuse in the prisons and across the state, trauma and violence continues to disproportionately affect large numbers of minority prisoners and their communities.

Table 2 - First-of-month totals

	2017	2017	2017	2016	% Change	
	May 1	June 1	July 1	July 1	Monthly	Annual
DOC Facilities						
Federal/Other	129	142	136	150	-4.2%	-9.3%
Sentenced	10,739	10,724	10,570	11,466	-1.4%	-7.8%
Special Parole	458	452	466	439	3.1%	6.2%
Pre-trial	3,176	3,111	3,163	3,287	1.7%	-3.8%
Total	14,502	14,429	14,335	15,342	-0.7%	-6.6%
DOC Community						
Transfer Parole	10	14	21	8	-	-
Parole/ Parcom Total	1,149	1,139	1,131	1,130	-0.7%	0.1%
Parole	986	976	968	947	-0.8%	2.2%
Parcom @ CT	163	163	163	183	0.0%	-10.9%
Furlough	47	44	22	32	-50.0%	-31.3%
Trans Placement	54	53	51	66	-3.8%	-22.7%
DUI/Home confine.	115	93	106	98	14.0%	8.2%
Halfway House Total	971	951	969	905	1.9%	7.1%
Comm Release	490	474	471	404	-0.6%	16.6%
TS	58	51	56	53	9.8%	5.7%
Parole	124	136	141	182	3.7%	-22.5%
Transfer Parole	0	0	4	2	-	-
Special Parole	299	289	297	265	2.8%	12.1%
TS	587	580	580	636	0.0%	-8.8%
Nursing home	7	7	8	9	-	-
Special Parole	1,714	1,742	1,755	1,530	0.7%	14.7%
Total	4,654	4,623	4,643	4,414	0.4%	5.2%

Table 2a - Admissions, releases & discharges

	2016	2017	2017	2016	% Change	
	Apr.	May	June	June	Monthly	Annual
Admissions						
Federal/Other	60	78	84	84	7.7%	0.0%
Remands	128	142	155	156	9.2%	-0.6%
DUI	7	9	5	3	-44.4%	66.7%
Parole	24	16	28	22	75.0%	27.3%
Trans Plac/Furlough	3	0	2	1	-	-
HWH	24	31	30	28	-3.2%	7.1%
TS	22	33	28	53	-15.2%	-47.2%
Special Parole	48	53	62	49	17.0%	26.5%
New Sentence	225	237	220	277	-7.2%	-20.6%
VOP	57	71	64	71	-9.9%	-9.9%
Pre-trial	1,271	1,474	1431	1469	-2.9%	-2.6%
Total	1,684	1,931	1,890	1,986	-2.1%	-4.8%
Releases and discharges						
Transfer Parole	5	9	14	10	-	-
Parole	84	95	108	112	13.7%	-3.6%
Furlough	36	24	21	33	-12.5%	-36.4%
Trans. Placement	23	24	36	19	50.0%	89.5%
Home Confinement DU	29	34	42	37	23.5%	13.5%
HWH	138	112	157	118	40.2%	33.1%
TS	170	186	195	222	4.8%	-12.2%
Special Parole	108	118	137	109	16.1%	25.7%
Nursing home	1	1	0	2	-	-
End of Sentence	619	765	720	737	-5.9%	-2.3%
Total	1,213	1,368	1,430	1,399	4.5%	2.2%
Pre-trial Releases*						
From Court	445	581	513	501	-11.7%	2.4%
Release to Bond	371	409	427	413	4.4%	3.4%

* Totals reflect events, not individual offenders

DOC - Community Release Unit (CRU)

Table 3 - Case reviews and release metrics

	Cases				Approval Rate
	Reviewed	Approved	Denied	Continued	
April	739	357	117	95	48%
May	806	376	95	113	47%
Jun'17	850	423	125	123	50%
Jun'16	833	398	112	121	48%

Board of Pardons and Paroles

Table 4 - Parole hearings, new cases

	Parole Hearings	Paroles granted	Grant rate	Paroles granted, 2016	Paroles granted, 2015
Apr.	176	102	58%	101	67
May	192	100	52%	95	83
June	182	84	46%	90	70

Table 4a - Other BOPP actions

	Reparole from revocation	Reparole from rescission	Closed interest cases	Special parole cases	Transfer parole cases
Apr.	47	5	22	38	4
May	44	2	20	40	13
June '17	29	2	45	41	11
June '16	41	2	29	43	2

The pre-trial population

Table 5 - Bond ranges for pre-trial detainees

Bond amount	May 1, 2017	June 1, 2017	July 1, 2017	July 1, 2016
Less than \$20K	580	548	568	603
\$20K to <\$50K	523	493	483	593
\$50K to <\$100K	721	734	753	646
\$100K or higher	1,420	1,407	1,484	1,532
Persons w/bonds	3,244	3182	3,288	3,374
Over \$1M	150	144	148	155

Table 5a - Pre-trial, weeks since admission

Weeks since last DOC admit	May 1, 2017	June 1, 2017	July 1, 2017	July 1, 2016
< 1 week	454	411	389	432
1 to < 3 weeks	351	344	374	409
3 to < 10 weeks	785	785	825	856
10 to < 30 weeks	902	881	911	950
30 wks or more	755	776	789	730
Pre-trial prisoners	3,247	3,197	3,288	3,377

Table 5b - Pre-trial admits, new offenders

	Apr. 2017	May 2017	June 2017	June 2016
Arraignments	2,591	2,968	2,961	2,921
Pre-trial Admits	1,271	1,474	1,431	1,469
New to DOC	335	409	393	415
% New	26%	28%	27%	28%

Court Support Services Division

Table 6 - The Jail Re-interview Program

	Pre-trial admissions	Offender interviews	Offenders released	Released last year
Apr.	1,271	998	417	755
May	1,474	1,210	515	774
June	1,431	1,212	499	711

Table 6a - Pre-trial bail and probation caseloads

	Pre-trial Bail Case Starts	Client Supv. Starts	Split Sentence Starts	Pre-trial bail cases
April	2,075	1,980	345	12,737
May	2,335	2,180	420	12,756
June 2017	2,251	2,038	391	12,666
June 2016	2,319	2,180	407	13,503

Note: Figures published here are based on the operational data available at the time of publication. Data in subsequent issues may not agree.

Chart 3 – Prison population

First week of the month, avg. daily count (ADC)

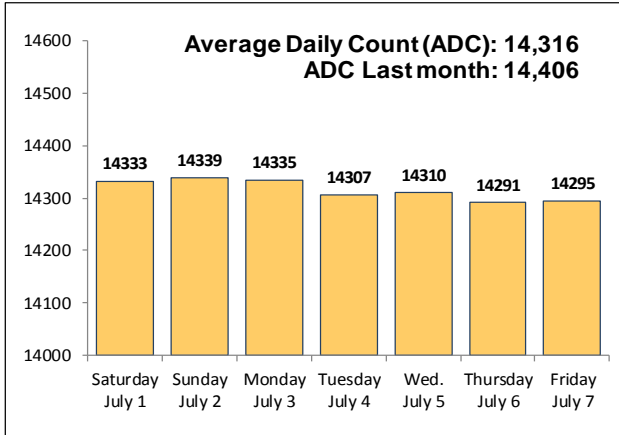


Chart 6 – Monthly DOC Admissions

May 2016 through June 2017

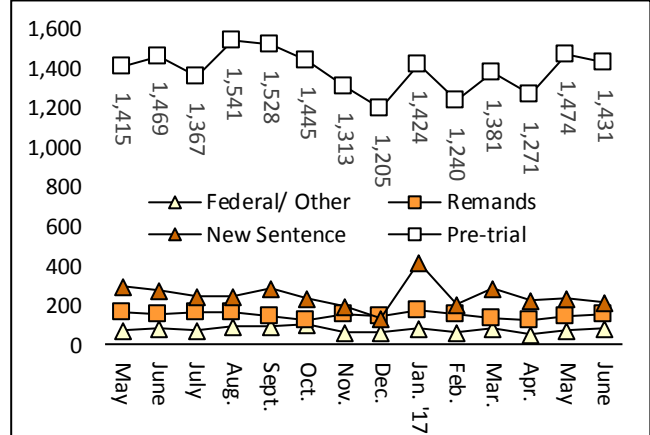


Chart 4 – Prison population, first-of-month

2015, 2016 and 2017

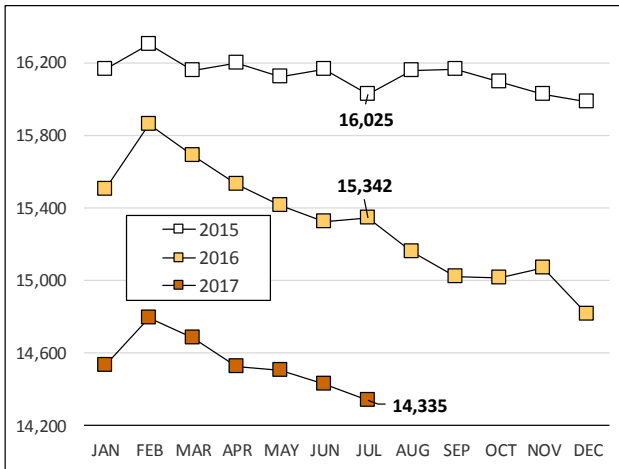


Chart 7– Remands from community release

June 2017

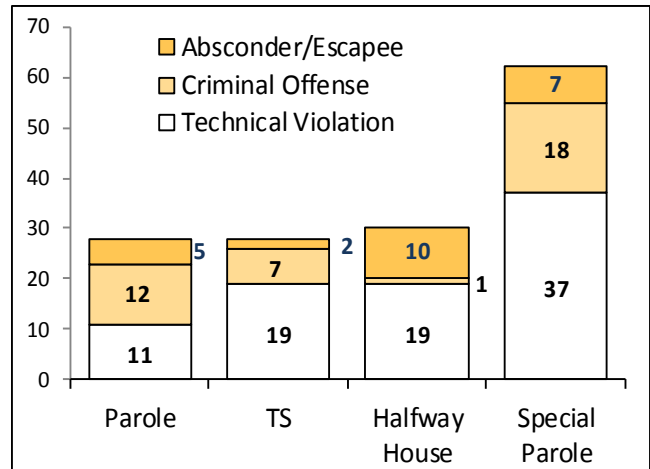


Chart 5 – Statewide criminal arrests

2016 and 2017

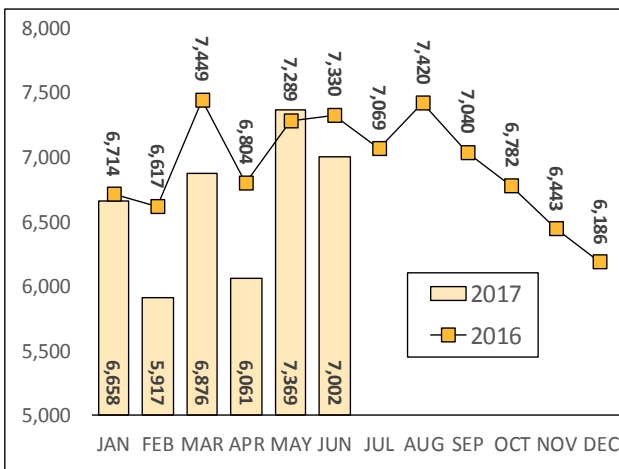
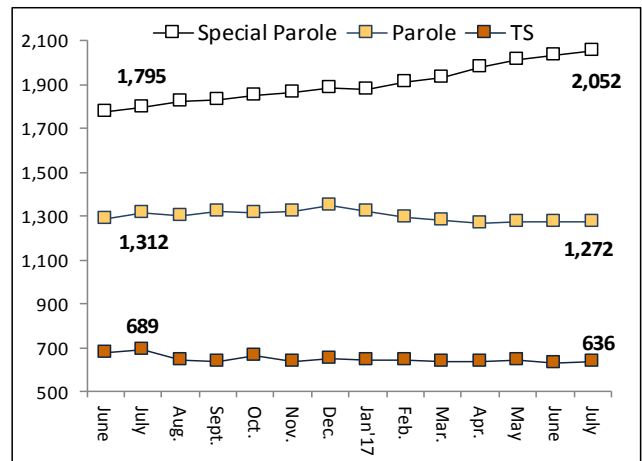


Chart 8 – DOC community supervision

June 1, 2016 through July 1, 2017



Note: Data for all charts, with the exception of Chart 5, was supplied by CT DOC. Data for Chart 5 are for new case starts in the state Offender-Based Tracking System (OBTS). Chart 8 includes offenders in halfway houses.