

OPM - Criminal Justice Policy & Planning Division

Monthly Indicators Report

Highlights

- On June 1, 2015, 16,165 people were incarcerated in Connecticut prisons. This represents a net gain of 43 offenders since May 1st. Last year, on June 1st, state prison count was 16,528.
- Although DOC's new Community Release Unit (CRU) completed its 2nd full month of operations (see table 3a), the number of releases from prison to community supervision have remained essentially flat. One of the reasons we have not seen a jump in releases is because the release dates of offenders approved by CRU are staggered depending on the type of release.
- Capacity does not appear to be a significant limitation on the number of offenders that can be supervised in the community. Measured on a June-to-June basis, the number of offenders on parole was 4% lower in 2015 than in 2014; the number of offenders on transitional supervision (TS) was down 17% (see table 8). Special parole caseloads grew by 7% during the same period.
- Monthly Indicators Report* will be publishing two new pieces of information each month, court arraignments and the number of cases processed by CRU. This data should provide readers with a somewhat more complete picture of the movement of offenders through the criminal justice system.
- Parole approvals by the Board of Pardons and Paroles increased last month pushing the grant rate up to 62% (see table 4). In March and April grant rate were in the 40 percent range.

Please send comments to:
opm.mir@ct.gov

Prison Population Forecast

The prison population is continuing to track closely with the path projected by OPM in February. Although April and May are generally less volatile than the summer months in terms of wide swings in the prison population, OPM continues to feel that the prison population will remain almost flat for the next several months.

With expansion of jail diversion programs on the front end and a more efficient review and approval system governing DOC discretionary releases, it does not appear that the conditions are in place for the prison population to swell considerably in the near term.

OPM will continue to watch developments across the system. In the coming year, CJPPD intends to expand its use of the CaseNotes system to access real-time operational data at DOC and BOPP. The Community Release Unit is heavily reliant on CaseNotes for data and the metrics that data provides to set goals, identify bottlenecks and introduce a degree of transparency and accountability to operational areas that had previously been largely autonomous and loosely monitored.

TABLE 1 – Prison Population Forecast

	Avg. Daily Count	OPM 2015 Forecast	Inmate difference
JAN '15	16,204	-	-
FEB	16,302	16,343	41
MAR	16,124	16,136	12
APR	16,161	16,079	(82)
MAY	16,093	16,052	(41)
JUN	16,121	16,039	(82)
JUL	-	16,061	-
AUG	-	16,078	-
SEP	-	16,085	-
OCT	-	16,117	-
NOV	-	16,112	-
DEC	-	15,948	-
JAN '16	-	15,686	-
FEB	-	15,917	-

Avg. Daily Count (ADC) for 1st week of month

Chart 1 – Actual prison population against the OPM forecasts
January 1, 2014 through February 1, 2016

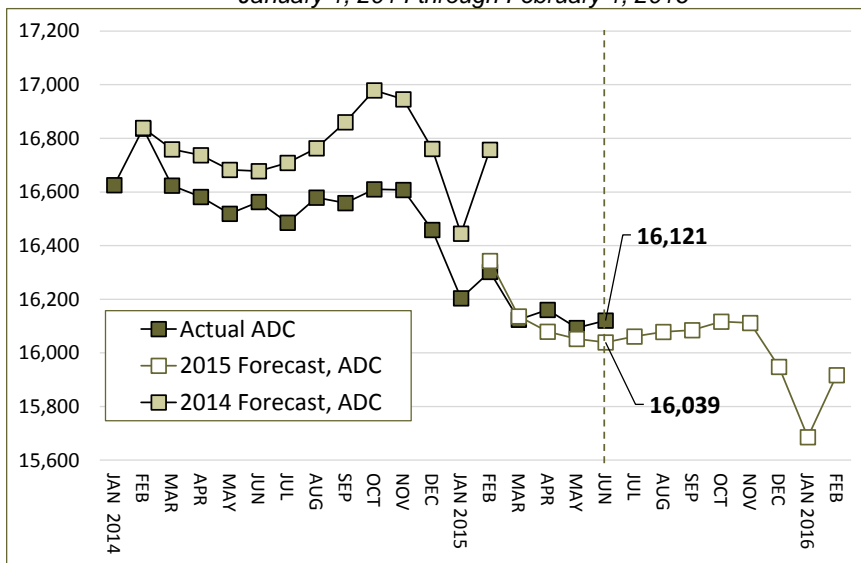
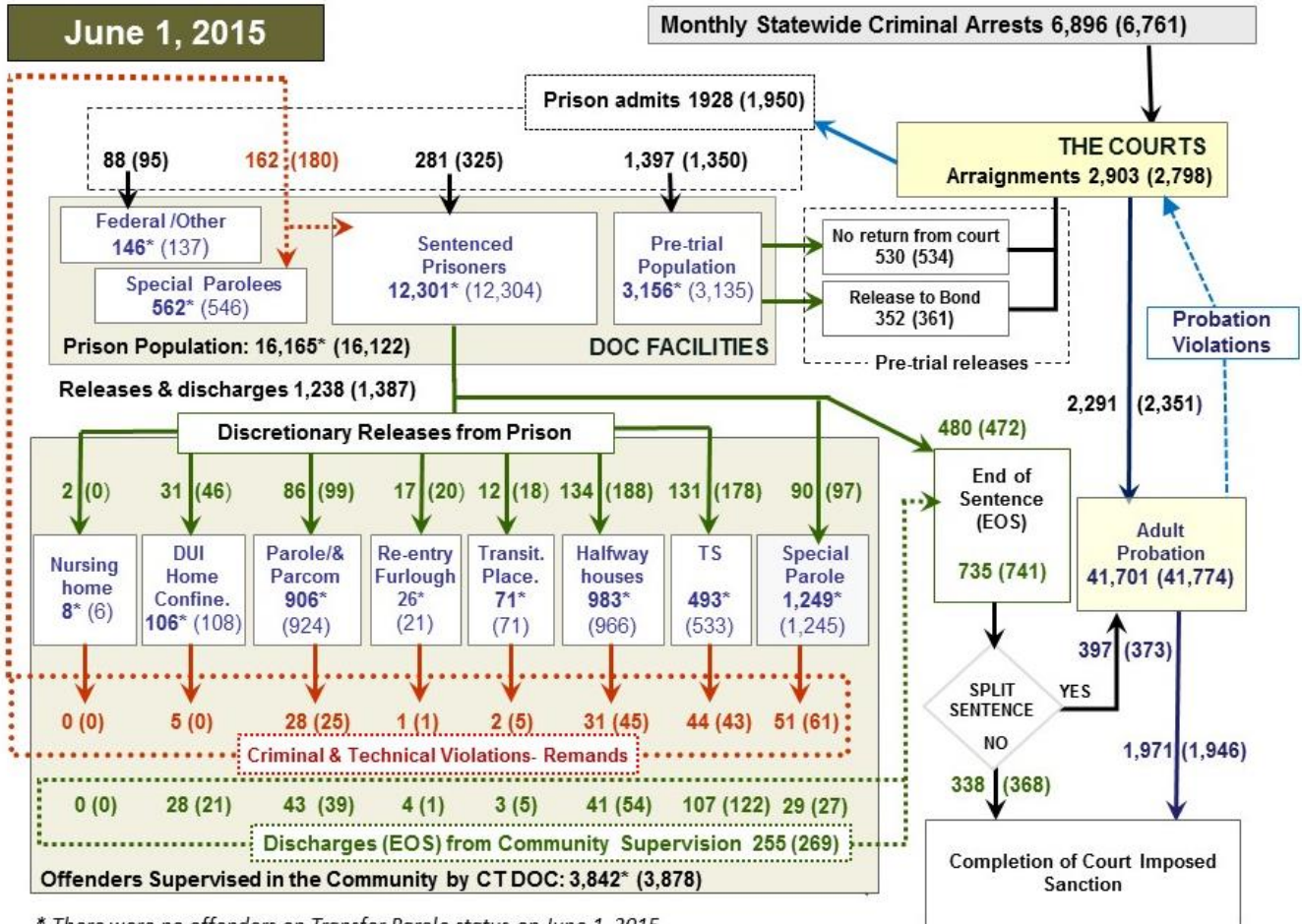


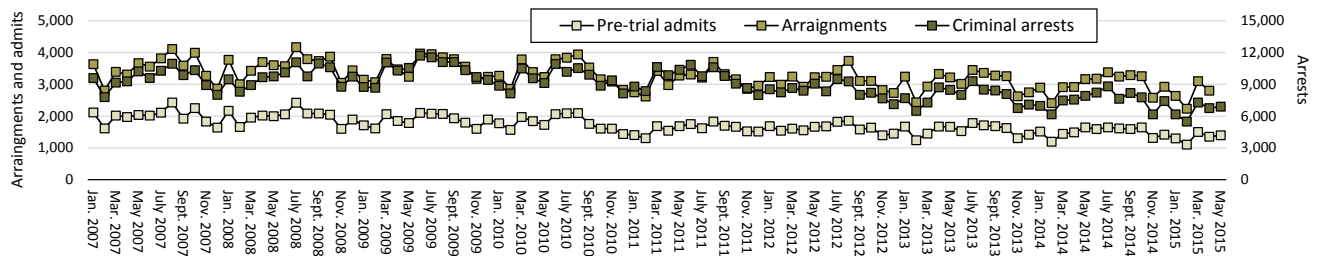
Chart 2 - Criminal justice, monthly counts and flows



* There were no offenders on Transfer Parole status on June 1, 2015.

Chart 2 contains monthly, operations data for the month of May 2015 and daily counts reported on June 1, 2015. Figures followed by asterisks (*) indicate the daily count on June 1st. Last month's figures are enclosed by parentheses. Sources: Arrests - OBTS, Court and probation data - CSSD, all other data - CT DOC.

Chart 2a – Arrests, arraignments and pre-trial admissions



The Monthly Indicators Report will now publish data on the number of court arraignments that take place across the state each month. Arraignments (see chart 2a) are more closely correlated with pre-trial admits than the number of arrests.

100 arraignments. By January 2015, only 45 people were admitted to prison per 100 arraignments. This, reduction in admits may go a long way towards explaining why pre-trial admissions have been dropping over the last few years.

The trend lines in chart 2a illustrate how stable the state's criminal justice system is. In the short term, the system is strongly self-stabilizing. Over the longer term, however, significant changes can be observed.

In recent years, the Judicial Branch has prioritized efforts to improve the efficiency and fairness of the bail system. The Branch's CSSD has revised its bail-risk assessment and weighted metrics to better inform and enhance the bail decision making process. The result: more defendants are diverted from jail while their cases are pending. This has been accomplished without subsequent increases in new arrests or FTAs.

In January 2007, for example, approximately 59 people were admitted to prison, pre-trial, for every

Table 2 – The first-of-the-month totals

	2015	2015	2015	2014	% Change	
	April 1	May 1	June 1	June 1	Monthly	Annual
DOC Facilities						
Federal/Other	134	137	146	184	6.6%	-20.7%
Sentenced	12,296	12,304	12,301	12,536	0.0%	-1.9%
Special Parole	543	546	562	400	2.9%	40.5%
Pre-trial	3,225	3,135	3,156	3,408	0.7%	-7.4%
Total	16,198	16,122	16,165	16,528	0.3%	-2.2%
DOC Community						
Transfer Parole	0	0	0	0	-	-
Parole/ Parcom Total	911	924	906	981	-1.9%	-7.6%
Parole	746	750	735	816	-2.0%	-9.9%
Parcom @ CT	165	174	171	165	-1.7%	3.6%
Furlough	10	21	26	6	-	-
Trans Placement	71	71	71	155	0.0%	-54.2%
DUI/Home confine.	83	108	106	101	-1.9%	5.0%
Halfway House Total	939	966	983	947	1.8%	3.8%
Comm Release	637	631	633	687	0.3%	-7.9%
TS	26	37	38	25	2.7%	52.0%
Parole	79	101	106	69	5.0%	53.6%
Transfer Parole	0	0	0	0	-	-
Special Parole	197	197	206	166	4.6%	24.1%
TS Total	542	533	493	616	-7.5%	-20.0%
Nursing home	6	6	8	8	-	-
Special Parole	1,254	1,245	1,249	1,200	0.3%	4.1%
Total	3,816	3,874	3,842	4,014	-0.8%	-4.3%

Table 3 – Admissions, releases & discharges*

	2015	2015	2015	2014	% Change	
	Mar.	April	May	May	Monthly	Annual
Admissions						
Federal/Other	89	95	88	90	-7.4%	-2.2%
Remands	161	180	162	204	-10.0%	-20.6%
DUI	3	0	5	8	-	-
Parole	41	25	28	26	12.0%	7.7%
Trans Plac/Furlough	3	6	3	6	-	-
HWH	23	45	31	52	-31.1%	-40.4%
TS	45	43	44	53	2.3%	-17.0%
Special Parole	46	61	51	59	-16.4%	-13.6%
New Sentence	323	325	281	279	-13.5%	0.7%
VOP	105	100	91	78	-9.0%	16.7%
Pre-trial	1,498	1,350	1,397	1,647	3.5%	-15.2%
Total	2,071	1,950	1,928	2,220	-1.1%	-13.2%
Releases and discharges						
Transfer Parole	0	0	0	0	-	-
Parole	92	99	86	74	-13.1%	16.2%
Furlough	8	20	17	10	-15.0%	70.0%
Trans. Placement	25	18	12	38	-33.3%	-68.4%
Home Confinement DUI	32	46	31	40	-32.6%	-22.5%
HWH	136	188	134	205	-28.7%	-34.6%
TS	165	178	131	197	-26.4%	-33.5%
Special Parole	87	97	90	84	-7.2%	7.1%
Nursing home	1	0	2	1	-	-
End of Sentence	730	741	735	868	-0.8%	-15.3%
Total	1,276	1,387	1,238	1,517	-10.7%	-18.4%
Pre-trial Releases*						
No return from Court	531	534	530	603	-0.7%	-12.1%
Release to Bond	369	443	352	467	-20.5%	-24.6%

* Totals reflect events, not individual offenders

Table 3a – CRU, Cases reviewed

	Reviewed	Approved	Denied	Continued	Waived
Mar.	39	21	14	1	3
Apr.	808	425	194	108	52
May	840	438	209	119	26

Board of Pardons and Paroles

Table 4 – Parole hearings, new cases

	Parole Hearings	Paroles granted	Grant rate	Paroles granted, 2014	Paroles granted, 2013
Mar.	149	67	45%	78	113
Apr.	141	67	48%	73	113
May	134	83	62%	73	149

Table 4a – Other parole actions

	Reparole from revocation	Reparole from rescission	Closed interest cases	Special parole cases
Mar.	31	3	23	40
Apr.	51	7	79	27
May	35	2	38	25

Pre-trial

Table 5 – Bond ranges for pre-trial detainees

Bond amount	April 1, 2015	May 1, 2015	June 1, 2015	June 1, 2014
Less than \$20K	573	547	566	646
\$20K to <\$50K	558	523	510	591
\$50K to <\$100K	687	677	664	695
\$100K or higher	1,473	1,450	1,410	1,508
Over \$1M	186	188	185	196
Offenders w/bonds	3291	3197	3,150	3,440

Table 5a – Pre-trial, weeks since admission

Weeks since last DOC admit	April 1, 2015	May 1, 2015	June 1, 2015	June 1, 2014
< 1 week	435	458	464	550
1 to < 3 weeks	391	350	351	414
3 to < 10 weeks	731	771	773	884
10 to < 30 weeks	943	831	809	858
30 wks or more	797	790	754	738
Pre-trial prisoners	3,297	3,200	3,151	3444

Table 5b – Pre-trial admits, new offenders

	Feb. 2015	Mar. 2015	Apr. 2015	May 2015
Pre-trial Admits	1,101	1,498	1,350	1,397
New to DOC	301	368	338	357
% New	27%	25%	25%	26%

Court Support Services Division

Table 6 – The Jail Re-interview Program

	Pre-trial admissions	Offender interviews	Offenders released	Releases last year
Mar.	1,498	1,514	868	792
Apr.	1,350	1,790	827	761
May	1,397	1,729	832	827

Table 6a – Pre-Trial & split-sentence starts

	Pre-trial Bail Case Starts	Client Supv. Starts	Split Sentence Starts
Mar.	2,483	2,457	376
Apr.	2,370	2,351	373
May	2,267	2,291	397

Note: Figures published here are based on operational data available at publication. Data in subsequent issues may not agree.

Chart 3 – Prison population

First week of the month, and ADC

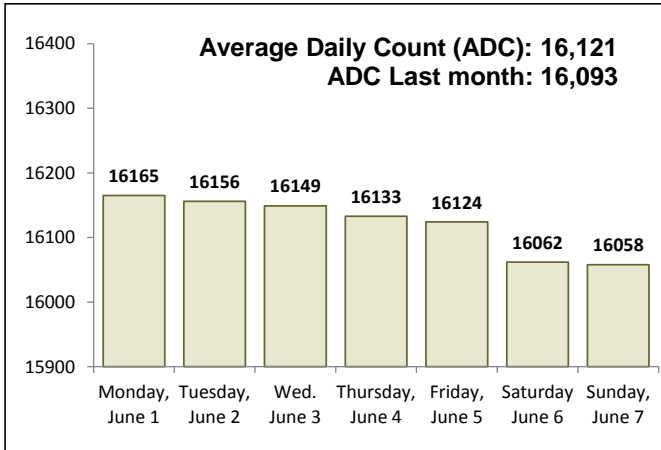


Chart 6 – Monthly DOC Admissions

March 2014 through May 2015

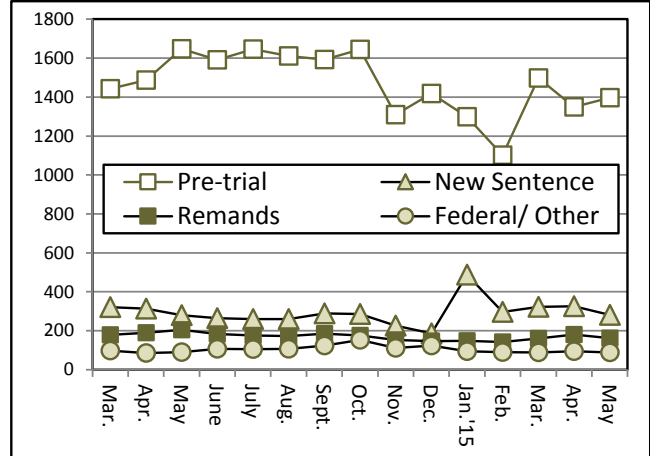


Chart 4 – Prison population, first-of-month

2013, 2014 and 2015

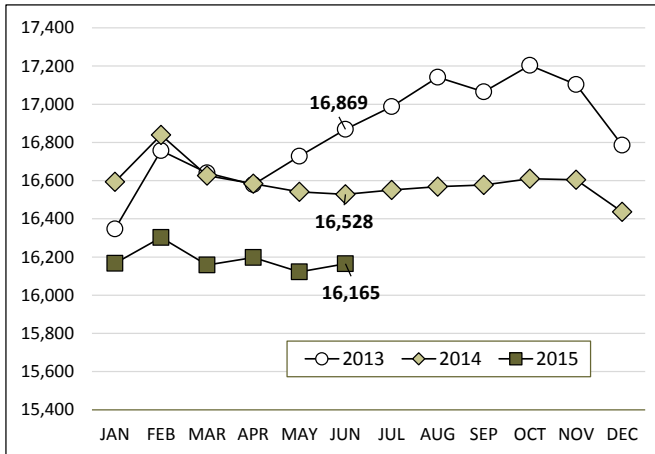


Chart 7– Remands from community release

May 2015

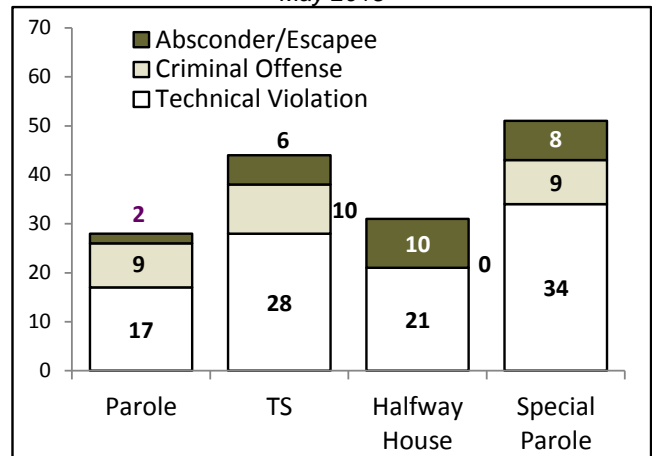


Chart 5 – Statewide criminal arrests

2014 and 2015

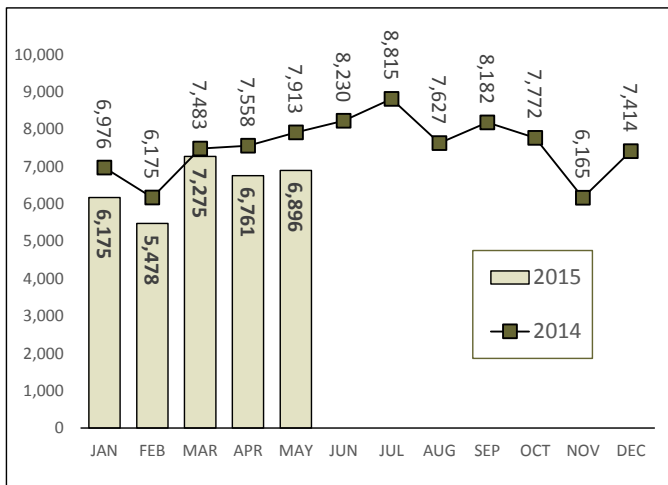
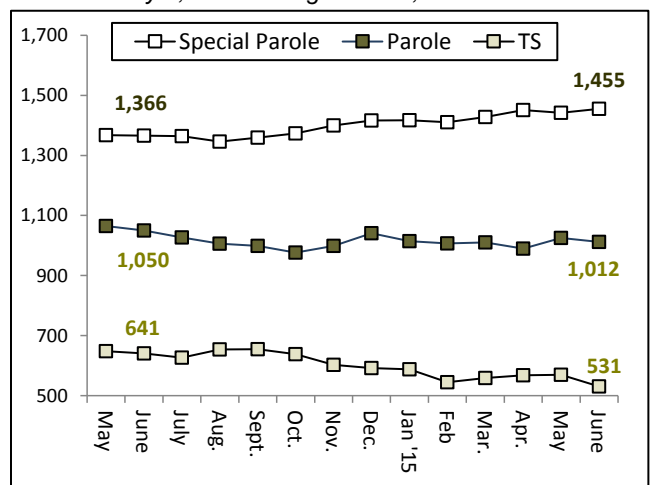


Chart 8 – DOC community supervision

May 1, 2014 through June 1, 2015



Note: Data for all charts, with the exception of Chart 5, was supplied by CT DOC. Data for Chart 5 is based on new case starts in the state Offender-Based Tracking System (OBTS). Chart 8 includes offenders in halfway houses.