

# OPM - Criminal Justice Policy & Planning Division

# Monthly Indicators Report

## Highlights

- The prison population on February 1, 2015 stood at 16,302, an increase of 135 from January 1, 2015, but a decrease of 537 from February 1, 2014.
- The increase was anticipated, but was is lower than previous years, and has obtained the moniker “January bump” in this publication and elsewhere. The particulars of this year’s bump are further explained in Chart 2a.
- Governor Malloy announced a new initiative in early February: the “Second Chance Society”, which focuses on eliminating mandatory minimum sentences for nonviolent drug possession, reclassifying certain nonviolent offenses, streamlining the pardon and parole systems, and creating job and housing opportunities for ex-offenders. The Governor stressed the importance of expanding education and employment opportunities as effective ways to reduce crime. It would appear that the “Second Chance Society” initiatives will reduce the prison population, although the full implications of it will not be known until further down the road.
- The annual Prison Population Forecast (see right) can also be found online at: [http://www.ct.gov/opm/cwp/view.aspx?a=2976&Q=383682&opmNav\\_GID=1797](http://www.ct.gov/opm/cwp/view.aspx?a=2976&Q=383682&opmNav_GID=1797) per CGS Title 4, Chapter 50, § 4-68n.
- In keeping with nearly all other indicators, statewide criminal arrests in January 2015 were down 11.48% or 801 arrests from last January (see Chart 5).

*Please send comments or suggestions to:  
opmmir@ct.gov*

## Prison Population Forecast

The state prison population was below OPM’s forecast in March 2014 and tracked lower throughout the year. The actual population averaged 248 fewer inmates than the forecast between March 2014 and February 2015. During 2014, the prison system reversed the population uptick it experienced in 2013 and shed 2.9% of the prison population.

The Criminal Justice Division at OPM recently published trend data relating to the state’s criminal justice system. By almost every conceivable measure, things appear to be moving in a positive direction. Reported crimes are down, as are arrests. Fewer cases are appearing in the courts and less people are being admitted to prison. Recidivism rates are edging down. In addition, Governor Malloy recently proposed a series of reforms that could reduce the prison system further.

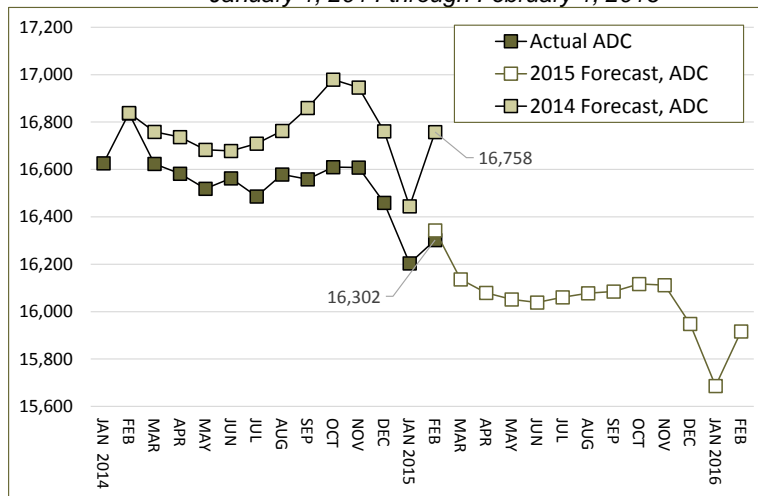
**TABLE 1 – Prison Population Forecast**

	Avg. Daily Count	OPM 2014 Forecast	Inmate difference
JAN '14	16,347	-	-
FEB	16,839	16,839	
MAR	16,624	16,759	135
APR	16,582	16,737	155
MAY	16,519	16,683	164
JUN	16,563	16,678	115
JUL	16,486	16,709	223
AUG	16,579	16,763	184
SEP	16,559	16,860	301
OCT	16,610	16,979	369
NOV	16,608	16,946	338
DEC	16,459	16,761	302
JAN '15	16,204	16,445	241
FEB	16,302	16,758	456

*Avg. Daily Count (ADC) for 1st week of month*

OPM’s prison population forecast for 2015 projects a relatively modest 2.6% decline or 426 prisoners, over the coming year. Realistically, the population could fall faster. In fact, given the way things are trending generally, it is hard to imagine a scenario where Connecticut would see rapid prison growth again during the rest of the decade.

**Chart 1 – Actual prison population against the OPM forecasts**  
*January 1, 2014 through February 1, 2016*



## Chart 2 - Criminal justice, monthly counts and flows

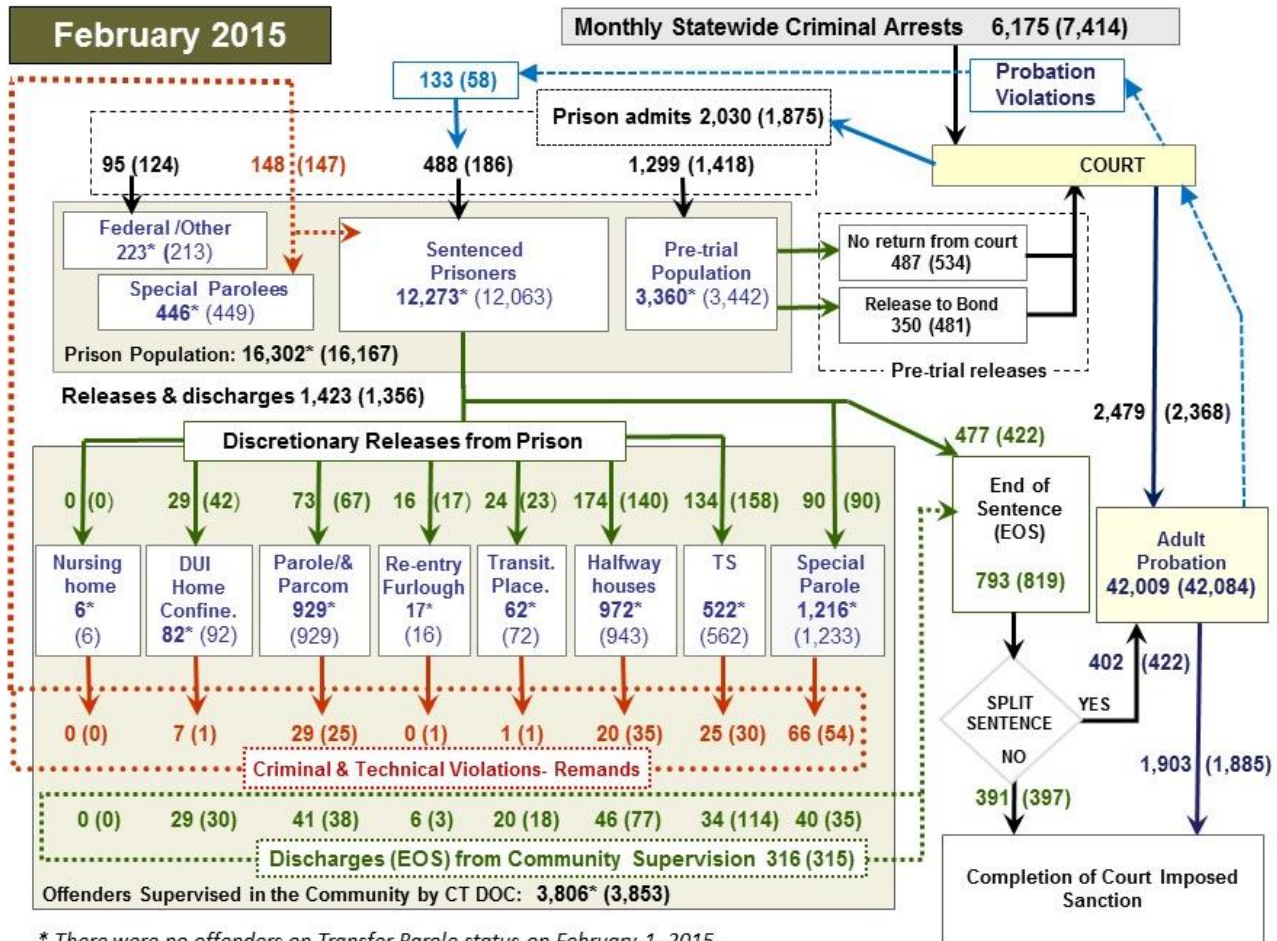
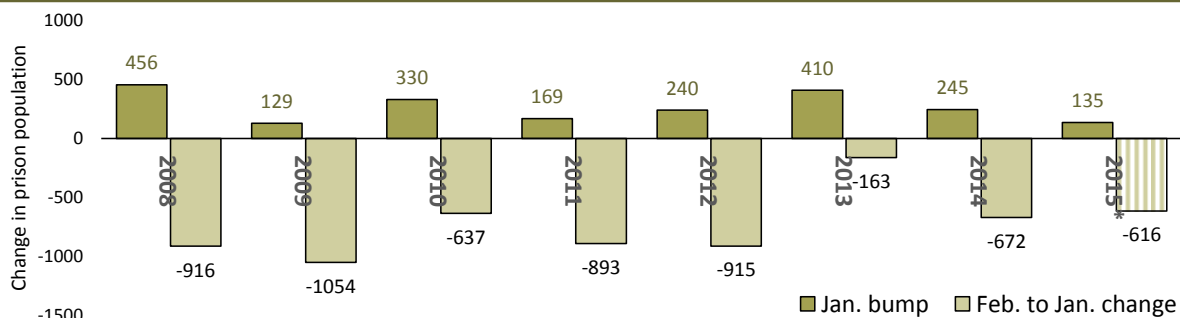


Chart 2 contains monthly, operations data for January 2015 and daily counts reported on February 1, 2015. Figures followed by asterisks (\*) indicate the daily count on February 1st. Last month's figures are enclosed by parentheses. Sources: Arrests - OBTS, Court and probation data - CSSD, all other data - CT DOC.

## Chart 2a – The January Bump



Recently, the prison population has declined each year during the late fall only to rebound strongly after January 1st, when the courts return with vigor after a long holiday lull. The number of offenders picking up sentences spikes in January and the subsequent increase in the prison population has become known as “the January bump”.

Since 2008, the prison population has increased every January. This year's increase of 135 prisoners appears relatively modest in comparison to recent years. In the past the prison population

has expanded by upwards of 400 prisoners in a single month. Because of the January bump, early February is the time of the year when the prison population peaks. The chart above shows the range of January population increases going back to 2008, and the subsequent decrease in the number of prisoners between February 1st and the following January.

OPM recently completed its prison population forecast for the coming year. If accurate, the prison population could decline to 15,686 by January 1, 2016, a projection of 616 people.

**Table 2 – The first-of-the-month totals**

	2014	2015	2015	2014	% Change	
	Dec. 1	Jan. 1	Feb.1	Feb. 1	Monthly	Annual
<b>DOC Facilities</b>						
Federal/Other	195	213	223	164	4.7%	36.0%
Sentenced	12,301	12,063	12,273	12,645	1.7%	-2.9%
Special Parole	438	449	446	415	-0.7%	7.5%
Pre-trial	3,502	3,442	3,360	3,615	-2.4%	-7.1%
<b>Total</b>	<b>16,436</b>	<b>16,167</b>	<b>16,302</b>	<b>16,839</b>	<b>0.8%</b>	<b>-3.2%</b>
<b>DOC Community</b>						
Transfer Parole	0	0	0	1	-	-
Parole/ Parcom Total	940	929	929	1,062	0.0%	-12.5%
Parole	774	761	762	892	0.1%	-14.6%
Parcom @ CT	166	168	167	170	-0.6%	-1.8%
Furlough	8	16	17	13	-	-
Trans Placement	78	72	62	116	-13.9%	-46.6%
DUI/Home confine.	84	92	82	90	-10.9%	-8.9%
Halfway House Total	985	943	972	986	3.1%	-1.4%
Comm Release	680	646	677	714	4.8%	-5.2%
TS	19	26	23	25	-11.5%	-8.0%
Parole	101	87	78	78	-10.3%	0.0%
Transfer Parole	0	0	0	0	-	-
Special Parole	185	184	194	169	5.4%	14.8%
TS Total	573	562	522	594	-7.1%	-12.1%
Nursing home	6	6	6	5	-	-
Special Parole	1,231	1,233	1,216	1,170	-1.4%	3.9%
<b>Total</b>	<b>3,905</b>	<b>3,853</b>	<b>3,806</b>	<b>4,037</b>	<b>-1.2%</b>	<b>-5.7%</b>

**Table 3 – Admissions, releases & discharges\***

	2014	2014	2015	2014	% Change	
	Nov.	Dec.	Jan.	Jan.	Monthly	Annual
<b>Admissions</b>						
Federal/Other	112	124	95	98	-23.4%	-3.1%
Remands	153	147	148	184	0.7%	-19.6%
Trans.Parole / DUI	5	1	7	2	-	-
Parole	20	25	29	31	16.0%	-6.5%
Trans Plac/Furlough	5	2	1	6	-	-
HWH	41	35	20	31	-42.9%	-35.5%
TS	37	30	25	52	-16.7%	-51.9%
Special Parole	45	54	66	62	22.2%	6.5%
New Sentence	226	186	488	505	162.4%	-3.4%
VOP	51	58	133	127	129.3%	4.7%
Pre-trial	1,310	1,418	1,299	1,514	-8.4%	-14.2%
<b>Total</b>	<b>1,801</b>	<b>1,875</b>	<b>2,030</b>	<b>2,301</b>	<b>8.3%</b>	<b>-11.8%</b>
<b>Releases and discharges (sentenced only)</b>						
Transfer Parole	0	0	0	0	-	-
Parole	113	67	73	103	9.0%	-29.1%
Furlough	5	17	16	10	-5.9%	60.0%
Trans. Placement	10	23	24	45	4.3%	-46.7%
Home Confinement DUI	26	42	29	33	-31.0%	-12.1%
HWH	150	140	174	172	24.3%	1.2%
TS	140	158	134	193	-15.2%	-30.6%
Special Parole	83	90	90	90	0.0%	0.0%
Nursing home	0	0	0	4	-	-
End of Sentence	688	819	793	816	-3.2%	-2.8%
<b>Total</b>	<b>1,215</b>	<b>1,356</b>	<b>1,333</b>	<b>1,466</b>	<b>-1.7%</b>	<b>-9.1%</b>
<b>Pre-trial Releases*</b>						
No return from Court	534	534	487	553	-8.8%	-11.9%
Release to Bond	399	481	350	404	-27.2%	-13.4%

\* Totals reflect events not individuals.

**Board of Pardons and Paroles**

**Table 4 – Parole hearings, new cases**

	Parole Hearings	Paroles granted, 2014	Grant rate	Paroles granted, 1 year prior	Paroles granted, 2 years prior
Nov.	169	103	61%	124	96
Dec.	193	107	55%	117	110
Jan. '15	155	81	52%	96	122

**Table 4a – Other parole actions**

	Reparole from revocation	Reparole from rescission	Closed interest cases	Special parole cases
Nov.	30	9	44	39
Dec.	34	1	44	45
Jan. '15	28	9	29	62

**Pre-trial detainees**

**Table 5 – Bond ranges for pre-trial detainees**

Bond amount	Dec. 1, 2014	Jan. 1, 2015	Feb. 1, 2015	Feb. 1, 2014
Less than \$20K	649	642	613	625
\$20K to <\$50K	588	588	555	632
\$50K to <\$100K	761	774	730	762
\$100K or higher	1,530	1,573	1,541	1,673
Over \$1M	199	194	185	212
Offenders w/bonds	3,528	3,577	3,439	3,692

**Table 5a – Pre-trial offenders, weeks since admission**

Weeks since last DOC admit	Dec. 1, 2014	Jan. 1, 2015	Feb. 1, 2015	Feb. 1, 2014
< 1 week	434	356	401	480
1 to < 3 weeks	369	408	347	396
3 to < 10 weeks	925	890	782	851
10 to < 30 weeks	1,075	1,160	1,153	1,120
30 wks or more	730	776	759	846
Pre-trial prisoners	3,533	3,590	3,442	3,693

**Table 5b – New offender admits, pre-trial**

	Nov. 2014	Dec. 2014	Jan. 2015
Pre-trial Admits	1,310	1,418	1,299
New offenders	345	377	319
% new	26.3%	26.6%	24.6%

**Court Support Services Division**

**Table 6 – The Jail Re-interview Program**

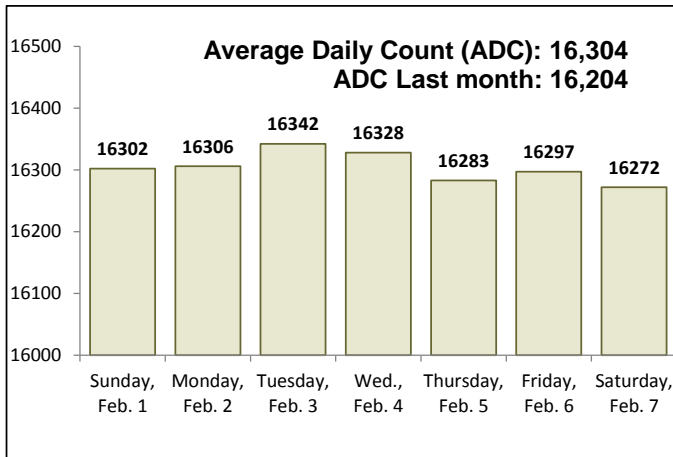
	Pre-trial admissions	Offender interviews	Offenders released	Releases last year
Nov.	1,310	1,327	804	917
Dec.	1,418	1,525	877	907
Jan. '15	1,299	1,341	888	722

**Table 6a – Pre-Trial & split-sentence starts**

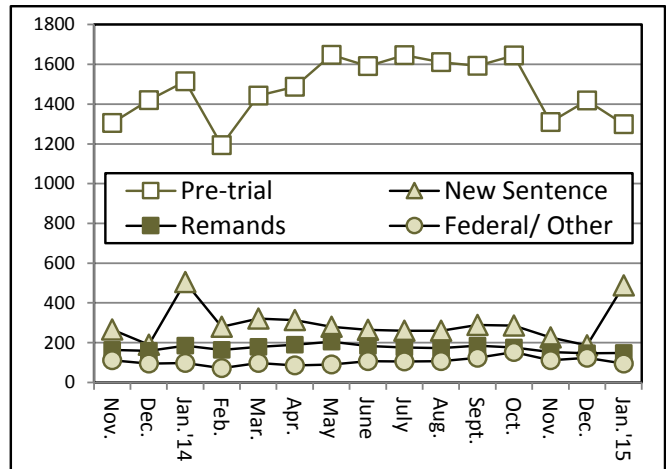
	Pre-trial Bail Case Starts	Client Supv. Starts	Split Sentence Starts
Nov.	2,207	2,022	378
Dec.	2,307	2,368	422
Jan. '15	2,166	2,479	402

Note: Figures published here are based on operational data available at the time of publication. Data in subsequent issues may not agree.

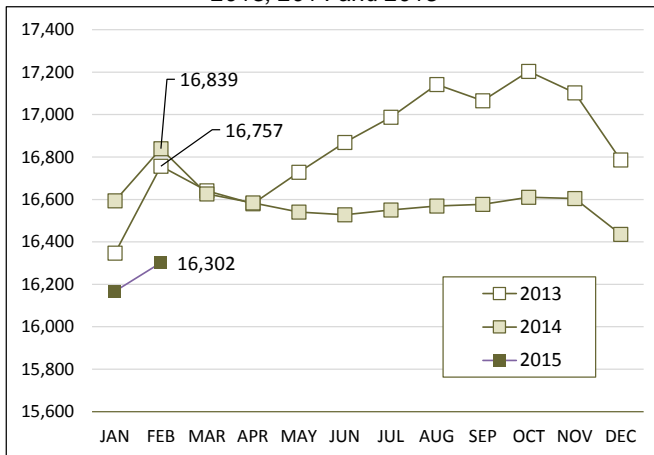
**Chart 3 – Prison population**  
February 1, 2015 to February 7, 2015



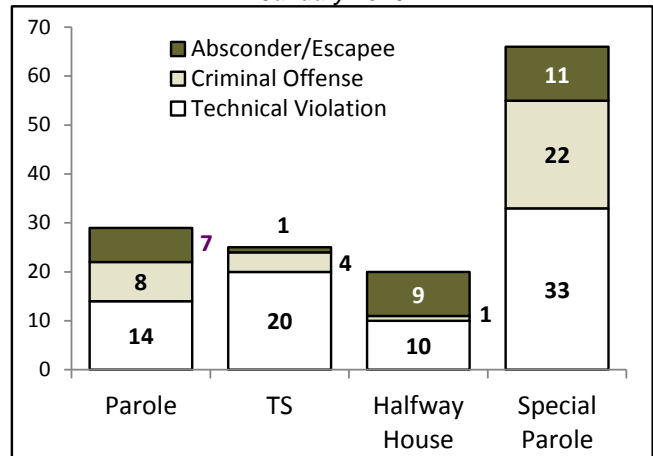
**Chart 6 – Monthly DOC Admissions**  
November 2013 through January 2015



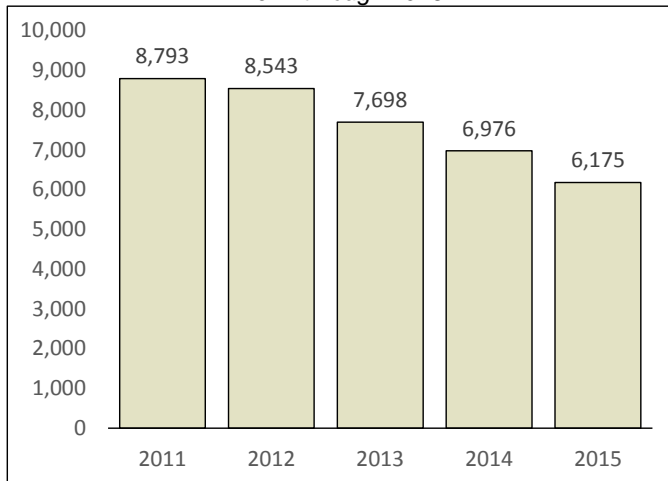
**Chart 4 – Prison population, first-of-month**  
2013, 2014 and 2015



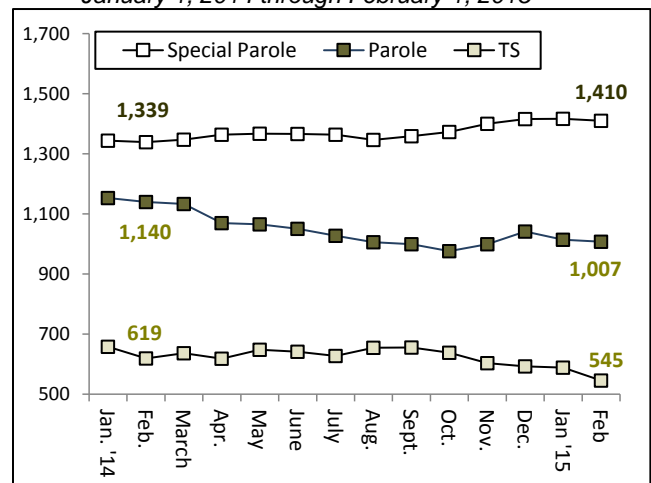
**Chart 7– Remands from community release**  
January 2015



**Chart 5 – Criminal arrests in January**  
2011 through 2015



**Chart 8 – DOC community supervision**  
January 1, 2014 through February 1, 2015



Note: Data for all charts, with the exception of Chart 5, was supplied by CT DOC. Data for Chart 5 is based on new case starts in the state Offender-Based Tracking System (OBTS). Chart 8 includes offenders in halfway houses.