

OPM - Criminal Justice Policy & Planning Division Monthly Indicators Report

Highlights

- On December 1, 2015, 15,982 people were incarcerated in Connecticut prisons and jails. A year ago there were 16,436 prisoners in the state. Although the total prison population dropped by 2.8% during the year, the sentenced population declined by 3.6%. The special parole population, under remand, grew by 30% during the year (see table 2).
- Compared to last December 1st, the pre-trial population in Connecticut was down about 3%, from 3,528 to 3,418. The number of pre-trial detainees held on bonds under \$20,000 dropped by 12% from 649 to 568 (see table 5).
- The DOC's network of residential beds, i.e., beds used to transition sentenced prisoners back to civilian life, are increasingly being used to house special parolees. On December 1st, 239 of the 1,009 state offenders in halfway house beds were special parolees. In 2014 that number was 185 and in 2013, it was 148. On December 1, 2012, only 118 special parolees were in halfway house placements.
- According to Uniform Crime Data for Connecticut, statewide arrests have declined by 26% since 2008 (see chart 2a). Full data as a pdf, can be viewed by following the on-line link to the Monthly Indicators Report on the OPM, CJPPD website.
- During the last three weeks, the prisoner population has declined by almost 150 prisoners. If the current pattern continues, the prison population could dip below 15,750 by the New Year.

We are on-line at:
http://www.ct.gov/opm/cwp/view.a?sp?a=2976&Q=383680&opmNav_GID=1797&opmNav=|46658|

Prison Population Forecast

As anticipated, the prison population began to decline this year shortly before the Thanksgiving Holiday. The holiday season generally translates into fewer cases disposed and a reduced influx of people into the prison system. When this happens and more people leave than enter, the prison population can only decline.

Although an end-of-the-year drop in the prison population is widely expected, the amplitude of the decline can vary significantly.

During December 2010, the prison population shrank by 430 prisoners; in 2011, it shrank by 442. In recent years, we have come to expect less year end volatility. During December in 2013 and 2014, the prison population only shed 160 inmates. It is not immediately clear why the offender population has been declining at a lower rate in the last two years.

This year, between Thanksgiving week and the first week of December, the DOC prison population declined by almost 150 prisoners. We expect that this rate of decline will slightly accelerate in the coming weeks. By year's end the prison population should, comfortably, be under 15,800 and possibly under 15,750.

TABLE 1 – Prison Population Forecast

	Avg. Daily Count	OPM 2015 Forecast	Inmate difference
JAN '15	16,204	-	-
FEB	16,302	16,343	41
MAR	16,124	16,136	12
APR	16,161	16,079	(82)
MAY	16,093	16,052	(41)
JUN	16,121	16,039	(82)
JUL	16,006	16,061	55
AUG	16,160	16,078	(82)
SEP	16,143	16,085	(58)
OCT	16,094	16,117	23
NOV	16,038	16,112	74
DEC	15,930	15,948	18
JAN '16	-	15,686	-
FEB	-	15,917	-

Avg. Daily Count (ADC) for 1st week of month

Chart 1 – Actual prison population against the OPM forecasts
 January 1, 2014 through February 1, 2016

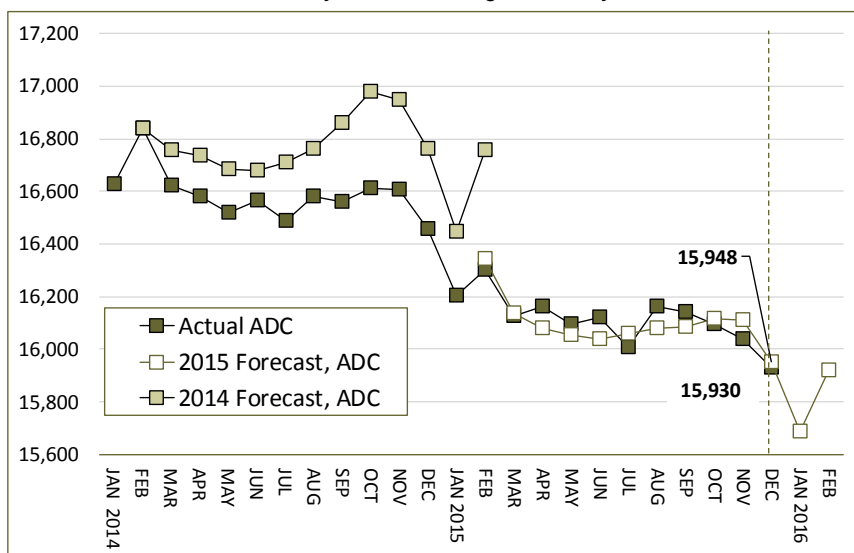
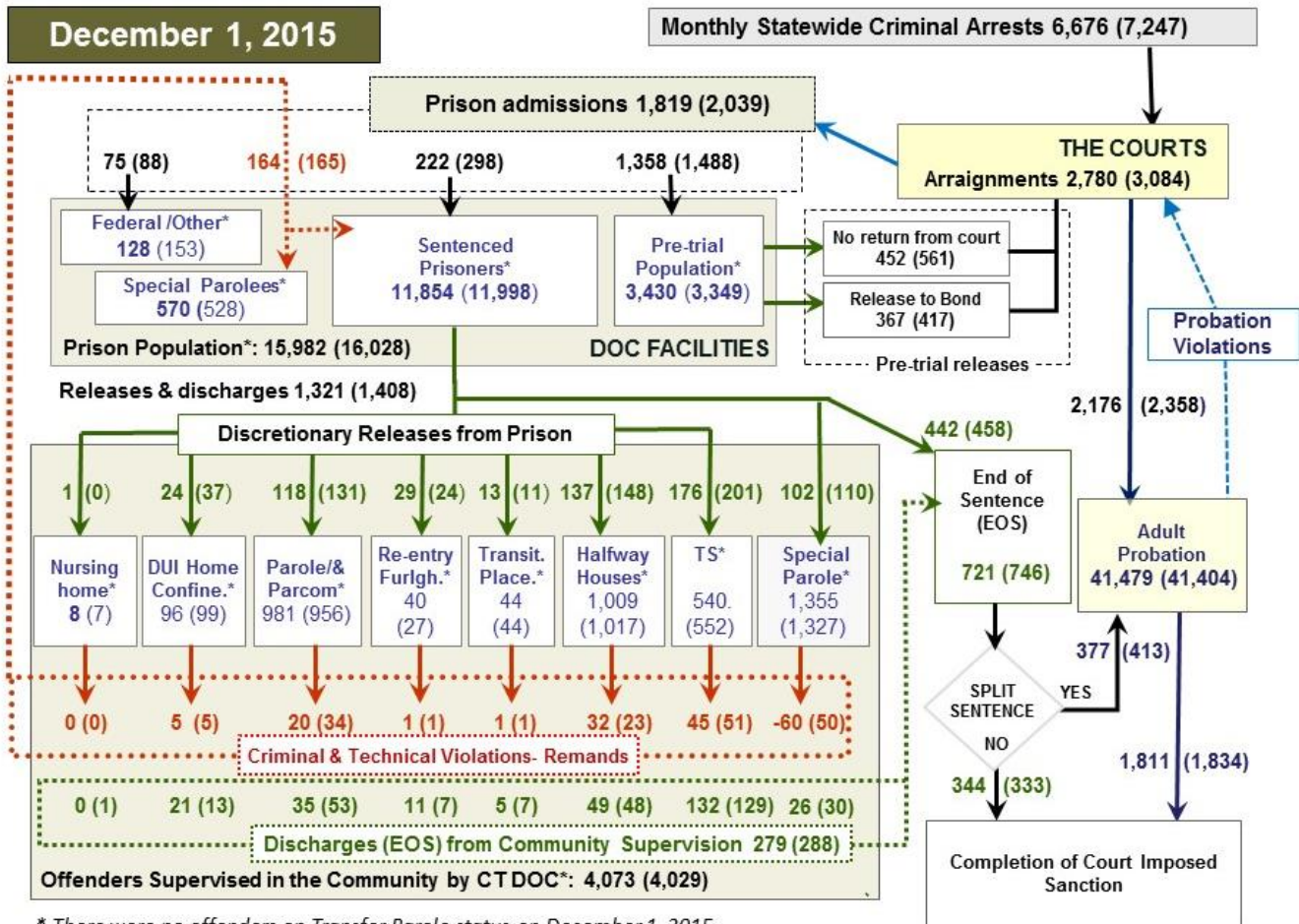


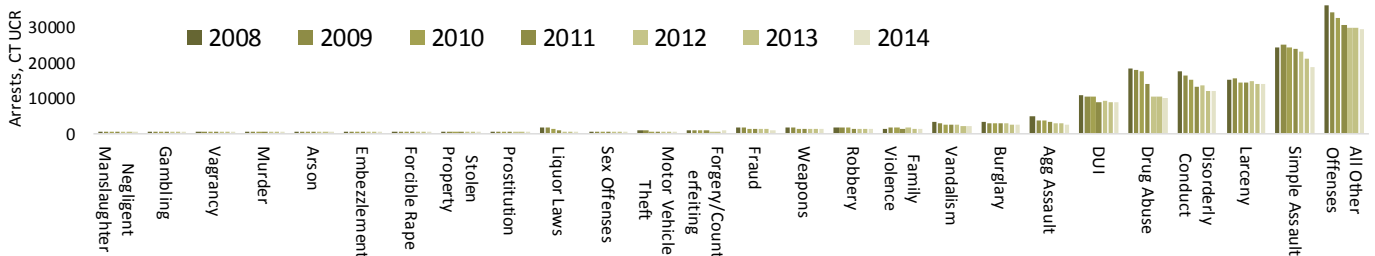
Chart 2 - Criminal justice, monthly counts and flows



* There were no offenders on Transfer Parole status on December 1, 2015.

Chart 2 contains monthly, operation data for November 2015 and daily counts reported on December 1, 2015. Asterisks (*) indicate the daily count on December 1st. Last month's figures are enclosed by parentheses. Sources: Arrests - OBTS, Court and probation data - CSSD, all other data - CT DOC.

Chart 2a – Patterns in criminal arrests, 2008 through 2014



Last month, this paper reported on declines in the number of youth arrests since 2008, based on CT Uniform Crime Report data. This month, we look at the same data with a focus on changes in arrests by crime type.

Six offense categories account for roughly 85% of arrests. The six include: DUI arrests, Drug Arrests, Disorderly Conduct, Larceny, Simple Assault and a catch-all category, All Other Offenses. All Other Offenses includes approximately 1,400 state or local laws not captured elsewhere. The offenses range from interfering with an officer to willful avoidance of tax on tobacco sales. The most common offense is Failure to Appear.

Between 2008 and 2014, total arrests in the state were down by 26%. There was significant variation, however, in arrest declines by offense type. Family violence offenses were the only offense group exhibiting an increase (2%) between 2008 and 2014. Arrests for Murder, Rape, Sex offenses, Robbery and Aggravated Assault were all down (-23%, -22%, -33%, -24% and -49%).

The state also reported large drops in arrests for Gambling, -64%, Vagrancy, -61%, Liquor laws, -76%, and Drug charges, -46%. A pdf of this information is available on-line (see Highlights on page 1).

Table 2 – The first-of-the-month totals

	2015	2015	2015	2014	% Change	
	Oct. 1	Nov. 1	Dec. 1	Dec. 1	Monthly	Annual
DOC Facilities						
Federal/Other	160	153	128	195	-16.3%	-34.4%
Sentenced	11,993	11,998	11,854	12,301	-1.2%	-3.6%
Special Parole	554	528	570	438	8.0%	30.1%
Pre-trial	3,392	3,349	3,430	3,502	2.4%	-2.1%
Total	16,099	16,028	15,982	16,436	-0.3%	-2.8%
DOC Community						
Transfer Parole	0	0	0	0	-	-
Parole/ Parcom Total	948	956	981	940	2.6%	4.4%
Parole	774	778	804	774	3.3%	3.9%
Parcom @ CT	174	178	177	166	-0.6%	6.6%
Furlough	24	27	40	8	-	-
Trans Placement	58	44	44	78	0.0%	-43.6%
DUI/Home confine.	81	99	96	84	-3.0%	14.3%
Halfway House Total	981	1,017	1,009	985	-0.8%	2.4%
Comm Release	589	586	555	680	-5.3%	-18.4%
TS	51	54	52	19	-3.7%	173.7%
Parole	133	148	163	101	10.1%	61.4%
Transfer Parole	0	0	0	0	-	-
Special Parole	208	229	239	185	4.4%	29.2%
TS Total	547	552	540	573	-2.2%	-5.8%
Nursing home	8	7	8	6	-	-
Special Parole	1,307	1,327	1,355	1,231	2.1%	10.1%
Total	3,954	4,029	4,073	3,905	1.1%	4.3%

Table 3 – Admissions, releases & discharges*

	2015	2015	2015	2014	% Change	
	Sept.	Oct.	Nov.	Nov.	Monthly	Annual
Admissions						
Federal/Other	97	88	75	112	-14.8%	-33.0%
Remands	215	165	164	153	-0.6%	7.2%
DUI	4	5	5	5	-	-
Parole	41	34	20	20	-41.2%	0.0%
Trans Plac/Furlough	3	2	2	5	-	-
HWH	45	23	32	41	39.1%	-22.0%
TS	46	51	45	37	-11.8%	21.6%
Special Parole	76	50	60	45	20.0%	33.3%
New Sentence	290	298	222	226	-25.5%	-1.8%
VOP	92	106	70	51	-34.0%	37.3%
Pre-trial	1474	1488	1358	1310	-8.7%	3.7%
Total	2,076	2,039	1,819	1,801	-10.8%	1.0%
Releases and discharges						
Transfer Parole	0	0	0	0	-	-
Parole	106	131	118	113	-9.9%	4.4%
Furlough	27	24	29	5	20.8%	480.0%
Trans. Placement	18	11	13	10	18.2%	30.0%
Home Confinement DUI	28	37	24	26	-35.1%	-7.7%
HWH	155	148	137	150	-7.4%	-8.7%
TS	224	201	176	140	-12.4%	25.7%
Special Parole	126	110	102	83	-7.3%	22.9%
Nursing home	1	0	1	0	-	-
End of Sentence	781	746	721	688	-3.4%	4.8%
Total	1,466	1,408	1,321	1,215	-6.2%	8.7%
Pre-trial Releases*						
No return from Court	559	561	452	534	-19.4%	-15.4%
Release to Bond	414	417	367	399	-12.0%	-8.0%

* Totals reflect events, not individual offenders

Table 3a – Community Release Unit metrics

	Cases				Approval Rate
	Reviewed	Approved	Denied	Continued	
Sept.	983	489	140	156	50%
Oct.	867	394	148	143	45%
Nov.	903	420	137	129	47%

Board of Pardons and Paroles

Table 4 – Parole hearings, new cases

	Paroles granted, 2015		Paroles Grant rate	Paroles granted, 2014	
	Parole Hearings	Paroles granted, 2015		Paroles granted, 2014	Paroles granted, 2013
Sept.	196	109	56%	151	128
Oct.	178	93	52%	125	110
Nov.	170	96	56%	103	124

Table 4a – Other Board actions

	Reparole from revocation	Reparole from rescission	Closed interest cases	Special parole cases
	Sept.	53	3	53
Oct.	53	6	32	36
Nov.	64	4	21	30

The pre-trial population

Table 5 – Bond ranges for pre-trial detainees

Bond amount	Oct. 1, 2015	Nov. 1, 2015	Dec. 1, 2015	Dec. 1, 2014
Less than \$20K	601	546	568	649
\$20K to < \$50K	581	606	593	588
\$50K to < \$100K	745	723	717	761
\$100K or higher	1,531	1,524	1,540	1,530
Offenders w/bonds	3,458	3,399	3,418	3,528
Over \$1M	180	178	176	199

Table 5a – Pre-trial, weeks since admission

Weeks since last DOC admit	Oct. 1, 2015	Nov. 1, 2015	Dec. 1, 2015	Dec. 1, 2014
< 1 week	485	495	351	434
1 to < 3 weeks	419	372	415	369
3 to < 10 weeks	889	920	921	925
10 to < 30 weeks	967	942	1,029	1,075
30 wks or more	703	677	706	730
Pre-trial prisoners	3,463	3,463	3,422	3,533

Table 5b – Pre-trial admits, new offenders

	Aug. 2015	Sept. 2015	Oct. 2015	Nov. 2015
Arraignments	3,069	3,105	3,084	2,780
Pre-trial Admits	1,570	1,474	1,488	1,358
New to DOC	409	398	413	367
% New	26%	27%	28%	27%

Court Support Services Division

Table 6 – The Jail Re-interview Program

	Pre-trial admissions	Offender interviews	Offenders released	Releases last year
Sept.	1,474	1,892	911	897
Oct.	1,488	1,885	896	706
Nov.	1,358	1,579	745	804

Table 6a – Pre-Trial & split-sentence starts

	Pre-trial Bail Case Starts	Client Supv. Starts	Split Sentence Starts
	Sept	2,450	2,277
Oct.	2,523	2,358	413
Nov.	2,254	2,176	377

Note: Figures published here are based on operational data available at publication. Data in subsequent issues may not agree.

Chart 3 – Prison population

First week of the month, and ADC

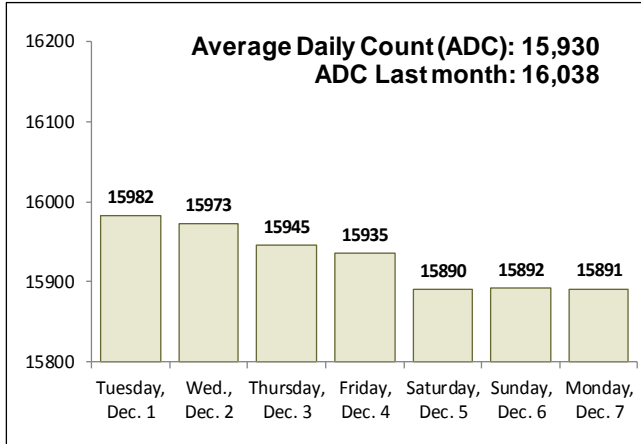


Chart 6 – Monthly DOC Admissions

September 2014 through November 2015

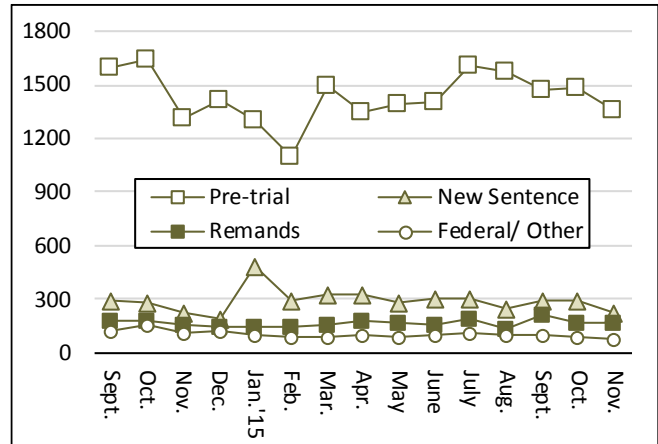


Chart 4 – Prison population, first-of-month

2013, 2014 and 2015

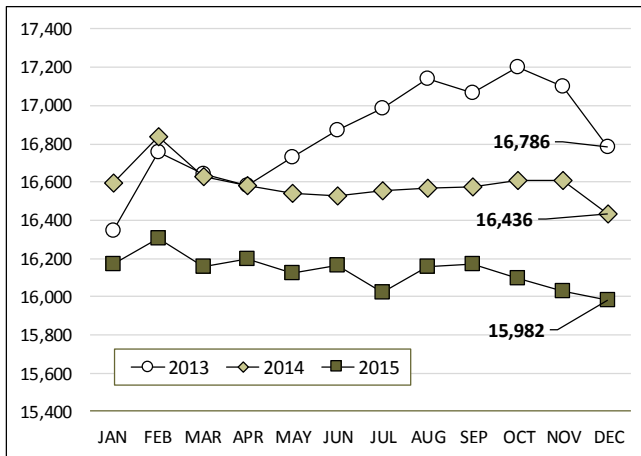


Chart 7 – Remands from community release

November 2015

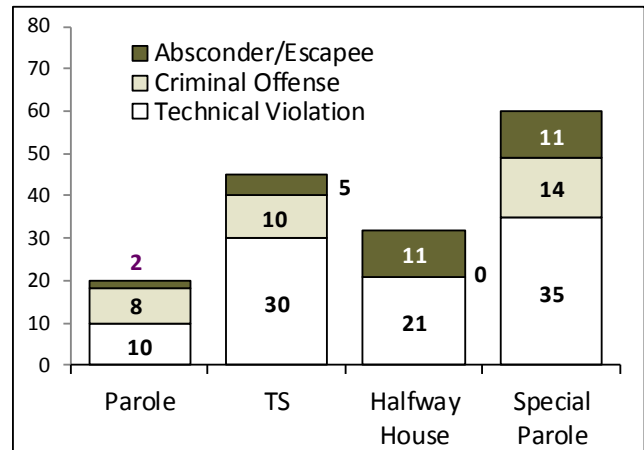


Chart 5 – Statewide criminal arrests

2014 and 2015

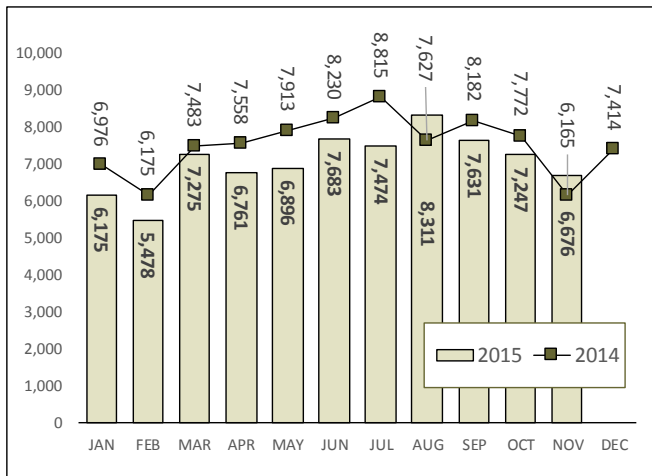
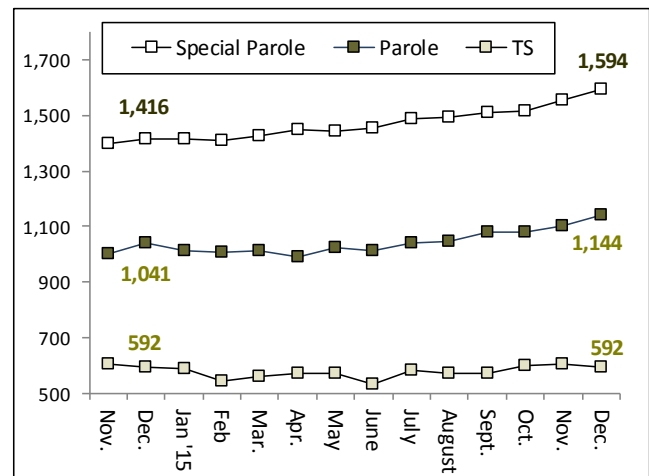


Chart 8 – DOC community supervision

November 1, 2014 through December 1, 2015



Note: Data for all charts, with the exception of Chart 5, was supplied by CT DOC. Data for Chart 5 is based on new case starts in the state Offender-Based Tracking System (OBTS). Chart 8 includes offenders in halfway houses.