

OPM - Criminal Justice Policy & Planning Division

Monthly Indicators Report

Highlights

- The total prison population dropped by 101 during October. On November 1st, 17,103 offenders were incarcerated in state prison facilities.
- Although the total prison count dropped by 101 during October, the number of sentenced prisoners went up by 156. The number of pre-trial detainees declined by 237 (see chart 2).
- During October, the DOC terminated its contract with NEON Inc., a Norwalk-based non-profit that provided halfway house beds for male and female offenders in Norwalk and Waterbury. The loss of approximately 45 residential beds probably contributed to this month's rise in the sentenced population. DOC placed the affected offenders in beds elsewhere in the state, and plans to add 45 replacement beds as soon as possible.
- According to DOC figures, approximately 700 pre-trial offenders are incarcerated with bonds of less than \$20,000. Between 1,700 and 1,800 pre-trial prisoners are held on bonds over \$100,000. On November 1, 208 prisoners were held on bonds of \$1M or higher (see table 5).
- The number of offenders on Special Parole continues to grow. June 2013 was the first month in which the number of Special Parole cases exceeded the number of cases for regular parole (see chart 8).

To contact the **Monthly Indicators Report**, please email: opm.mir@ct.gov

Prison Population Forecast

Historical seasonal patterns suggest that the prison population will begin to decline between now and the end of the year. It would be reasonable to expect the prison population to settle in the 16,500 to 16,600 range by the first of next year. This is still significantly higher than the population that was projected by OPM last February.

Over several months, this paper has put forward several possible explanations for this year's unanticipated and prolonged rise in the prison population.

In theory, the prison population should be a relatively easy thing to model. Crime rates, arrests, bond determinations and sentencing practices do not vary considerably from year to year. As a result, we, generally, do not see major swings in prison admittances when seasonal variations are eliminated.

If the number of prison admittances does not rise, then the only reasonable explanation for a rising prison population would be longer, average lengths-of-stay for many incarcerated offenders.

TABLE 1 – Prison Population Forecast

	Avg. Daily Count	OPM 2012 Forecast	Inmate difference
JAN '13	16,347	16,347	0
FEB	16,712	16,763	-51
MAR	16,619	16,673	-54
APR	16,597	16,655	-58
MAY	16,731	16,551	180
JUN	16,884	16,522	362
JUL	17,007	16,515	492
AUG	17,115	16,530	585
SEP	17,068	16,584	484
OCT	17,146	16,635	511
NOV	17,058	16,500	558
DEC		16,314	-
JAN '14		16,010	-
FEB		16,215	-

Avg. Daily Count (ADC) for 1st week of month

Chart 1 – Actual ADC of the prison population against the OPM forecast
January 1, 2012 through February 1, 2014

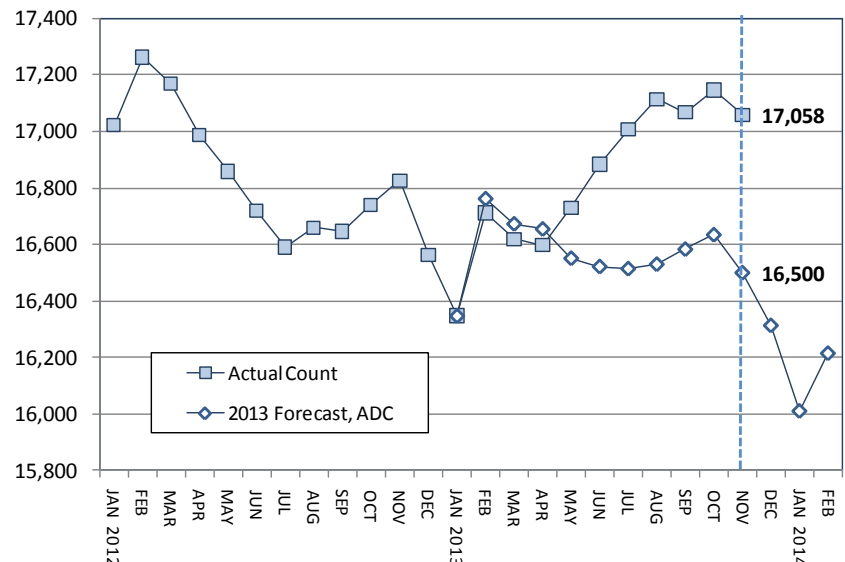
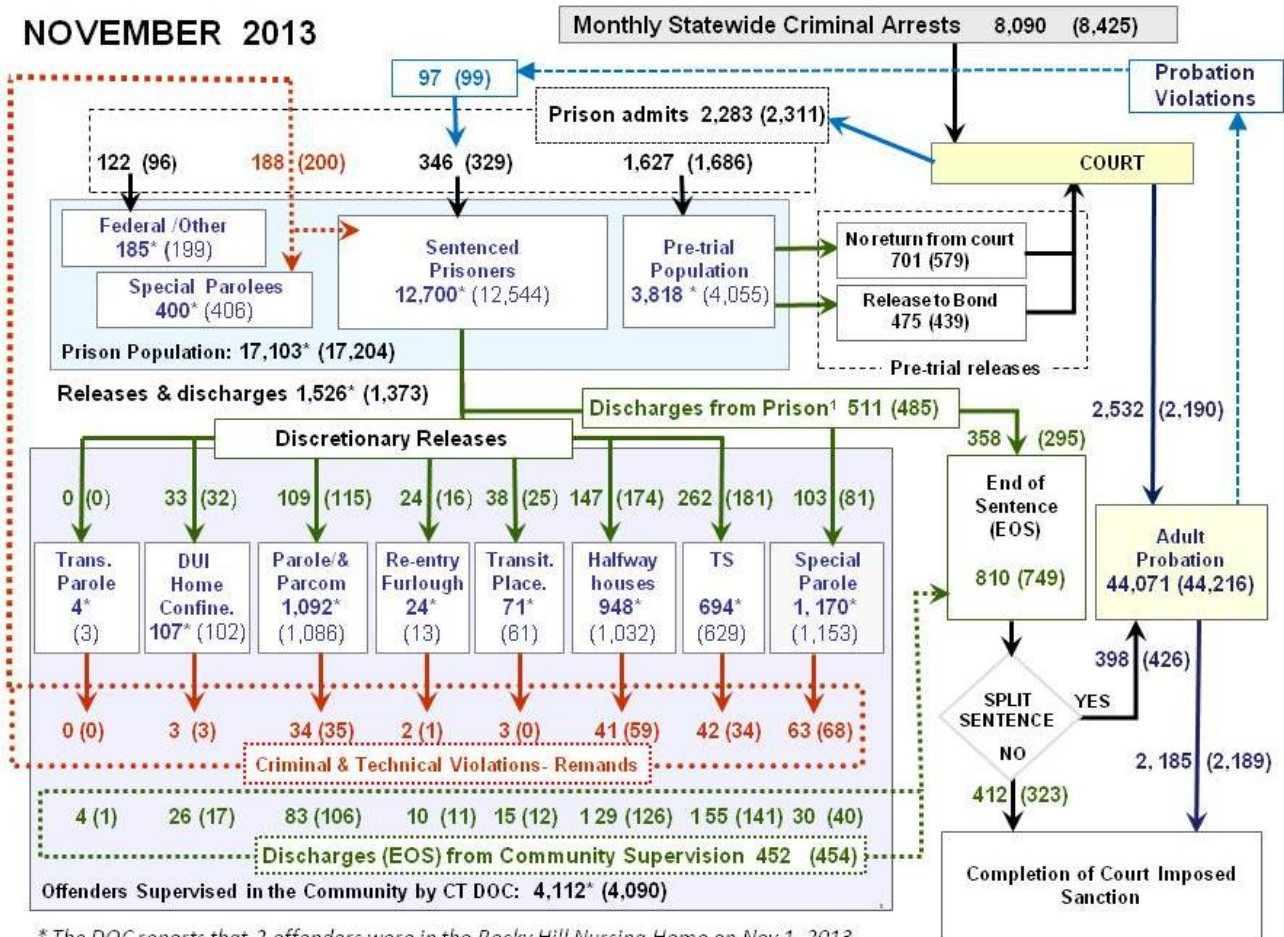


Chart 2 - Criminal justice, monthly flows



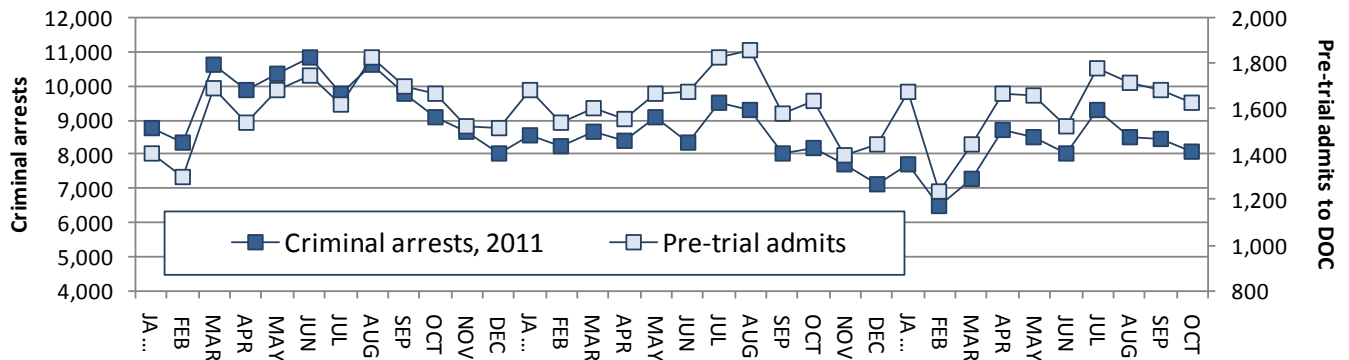
* The DOC reports that 2 offenders were in the Rocky Hill Nursing Home on Nov.1, 2013.

This chart contains monthly operational data for October 2013 and daily counts reported on November 1, 2013. Asterisks (*) indicate the daily count on November 1st. Figures for the previous month are enclosed by parentheses.

¹DOC facility reports indicate that 511 sentenced offenders discharged (EOS) from DOC facilities during the month.

Sources of the data: Arrests - OBTS, Court and probation data - CSSD, all other data - CT DOC

Chart 2a – The relationship between arrests and pre-trial DOC admissions



One in five arrests in Connecticut results in the arrestee being admitted to prison on pre-trial status. On November 1, 2013, there were 3,818 pre-trial offenders in Connecticut prisons; 420 of those prisoners had been in prison for less than a week. Almost twice that number, 805, had been incarcerated on pre-trial status for at least 30 weeks (see table 5a).

Each summer the pre-trial prison population swells as the weather gets warmer and the days get longer. During February, the coldest, shortest month, we typically see the lowest number of monthly arrests and prison admits. Given these strong seasonal patterns, changes in the pretrial population have been much easier to predict than changes in the size of sentenced population.

Table 2 – The first-of-the-month population counts

	2013	2013	2013	2012	% Change	
	Sep. 1	Oct. 1	Nov. 1	Nov. 1	Monthly	Annual
DOC Facilities						
Federal/Other	220	199	185	163	-7.0%	13.5%
Sentenced	12,512	12,544	12,700	12,398	1.2%	2.4%
Special Parole	391	406	400	377	-1.5%	6.1%
Pre-trial	3,942	4,055	3,818	3,888	-5.8%	-1.8%
Total	17,065	17,204	17,103	16,826	-0.6%	1.6%
DOC Community						
Transfer Parole	7	3	4	6	-	-
Parole/ Parcom Tot:	1,081	1,086	1,092	1,326	0.6%	-17.6%
Parole	919	922	927	1,155	0.5%	-19.7%
Parcom @ CT	162	164	165	171	0.6%	-3.5%
Furlough	17	13	24	20	84.6%	20.0%
Trans Placement	40	61	71	16	16.4%	343.8%
DUI/Home confine.	99	102	107	133	4.9%	-19.5%
Halfway House Tota	1,052	1,034	948	1,035	-8.3%	-8.4%
Comm Release	766	771	694	825	-10.0%	-15.9%
TS	29	31	32	14	3.2%	128.6%
Parole	102	91	87	86	-4.4%	1.2%
Transfer Parole	0	0	0	0	-	-
Special Parole	155	141	135	108	-4.3%	25.0%
TS Total	637	629	694	765	10.3%	-9.3%
Nursing home	2	2	2	0	-	-
Special Parole	1,153	1,160	1,170	1,138	0.9%	2.8%
Total	4,088	4,090	4,112	4,439	0.5%	-7.4%

Table 3 – Monthly admissions, releases and discharges*

	2013	2013	2013	2012	% Change	
	Aug.	Sept.	Oct.	Oct.	Monthly	Annual
Admissions						
Federal/Other	118	96	122	105	27.1%	16.2%
Returns	194	200	188	192	-6.0%	-2.1%
Trans.Parole / DUI	7	3	3	9	-	-
Parole	35	35	34	45	-2.9%	-24.4%
Trans Plac/Furlough	2	1	5	1	-	-
HWH	46	59	41	34	-30.5%	20.6%
TS	43	34	42	51	23.5%	-17.6%
Special Parole	61	68	63	52	-7.4%	21.2%
New Sentence	290	329	346	368	5.2%	-6.0%
VOP	86	99	97	116	-2.0%	-16.4%
Pre-trial	1,712	1,686	1,627	1,635	-3.5%	-0.5%
Total	2,314	2,311	2,283	2,300	-1.2%	-0.7%
Releases						
Transfer Parole	0	0	0	0	-	-
Parole	134	115	109	148	-5.2%	-26.4%
Furlough	9	16	24	21	50.0%	14.3%
Transfer Placement	20	25	38	10	52.0%	280.0%
Home Confinement DL	37	32	33	46	3.1%	-28.3%
HWH	215	174	147	182	-15.5%	-19.2%
TS	241	181	262	231	44.8%	13.4%
Special Parole	87	81	103	78	27.2%	32.1%
Nursing home	0	0	0	0	-	-
End of Sentence	834	749	810	808	8.1%	0.2%
Total	1,577	1,373	1,526	1,524	11.1%	0.1%
Pre-trial Releases*						
No return from Court	665	579	701	571	21.1%	22.8%
Release to Bond	429	439	475	438	8.2%	8.4%

* Totals reflect events not individuals.

Board of Pardons and Paroles

Table 4a – Inmates with sentences > 24 months

	Parole eligible	Not eligible
Sept.	8,446	860
Oct.	8,418	859
Nov.	8,479	862

Table 4b – New Parole hearings

	Hearings	Granted	Rate
Aug.	167	124	74%
Sept.	175	128	73%
Oct.	159	125	79%

Table 4c – Other parole actions

	Reparole from revocation	Reparole from rescission	Closed interest cases	Special parole cases
Aug.	56	7	413	36
Sept.	62	12	55	15
Oct.	40	11	70	10

Pre-trial detainees

Table 5 – Pre-trial prisoners with bonds

	Aug. 1 2013	Sept. 1, 2013	Oct. 1, 2013	Nov. 1, 2013
Bond amount				
Less than \$20K	680	713	713	664
\$20K to < \$50K	697	665	667	630
\$50K to < \$100K	834	854	856	791
\$100K or higher	1,727	1,768	1,794	1,732
Over \$1M	218	211	211	208
Offenders	3,938	4,000	4,030	3,817

Table 5a – Pre-trial prisoners, length-of-stay

Weeks since last DOC admit	Aug. 1, 2013	Sept. 1, 2013	Oct. 1, 2013	Nov. 1, 2013
< 1 week	545	537	498	420
1 to < 3 weeks	454	487	476	395
3 to < 10 weeks	1,038	1,012	1,087	1,023
10 to < 30 weeks	1,109	1,146	1,148	1,179
30 wks or more	803	818	824	805
	3,949	4,000	4,033	3,822

Court Support Services Division

Table 6 – The Jail Re-interview Program

	Offenders interviewed	Offenders released	Releases last year
Aug.	1,756	998	817
Sept.	1,703	946	620
Oct.	1,864	1,081	659

Table 7 – Pre-Trial & split-sentence starts

	Pre-trial Bail Case Starts	Client Supv. Starts	Split Sentence Starts
Aug.	2,576	2,238	411
Sept.	2,319	2,190	426
Oct.	2,652	2,532	398

Note: Figures published here are based on operational data available at the time of publication. Data in subsequent issues may not agree.

Chart 3 – Prison Population
November 1, 2013 to November 7, 2013

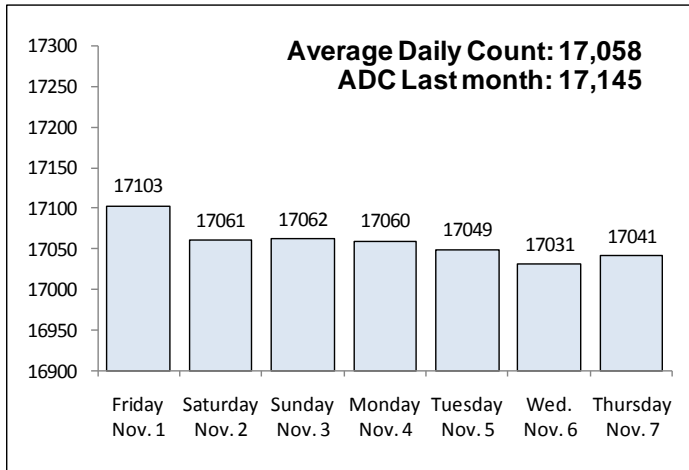


Chart 6 – Monthly DOC Admissions
September 2012 through October 2013

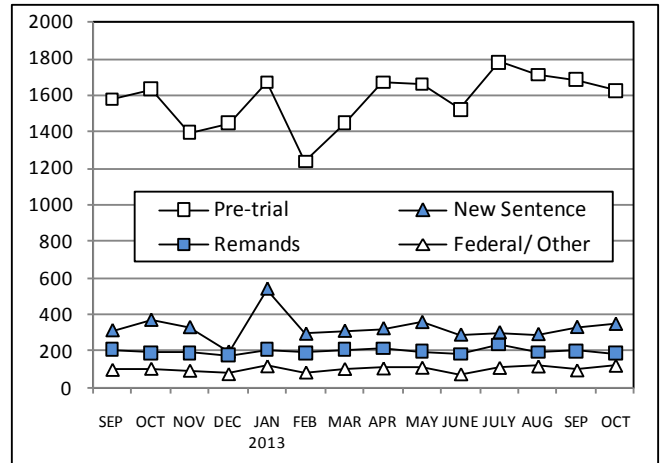


Chart 4 – Prison Population, first-of-month
2011 through 2013

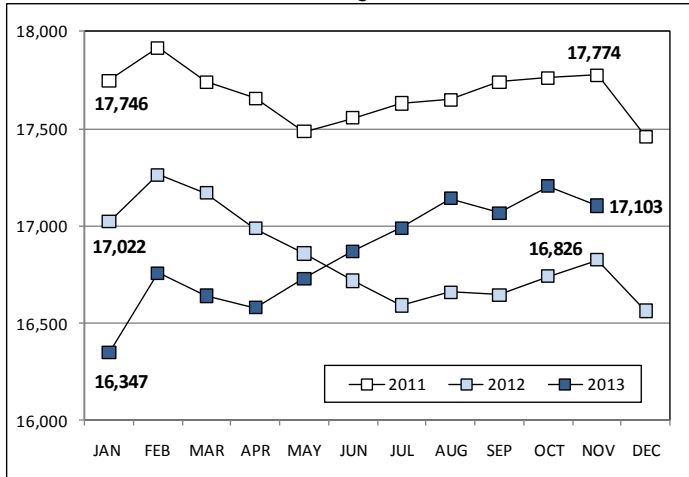


Chart 7– Remands from Community Release
October 2013

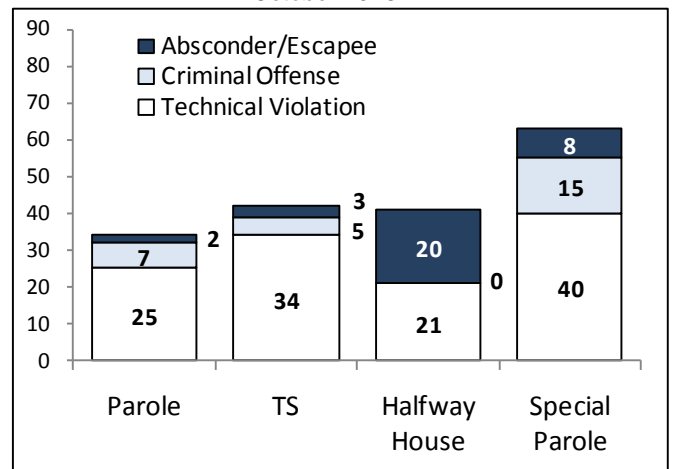


Chart 5 – Monthly Statewide Criminal Arrests
2012 versus 2013

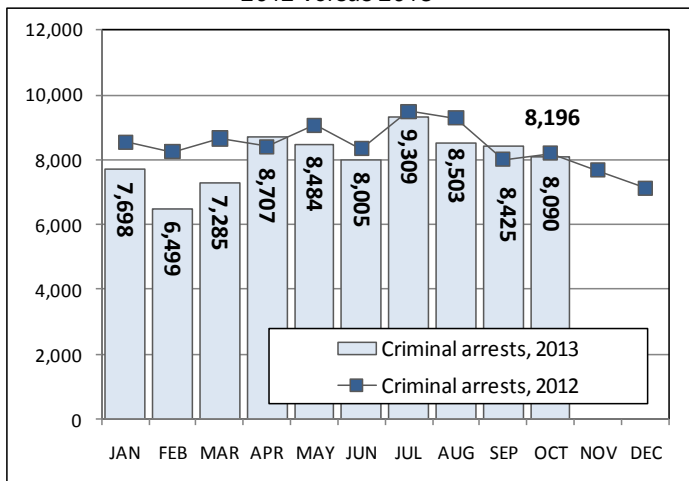
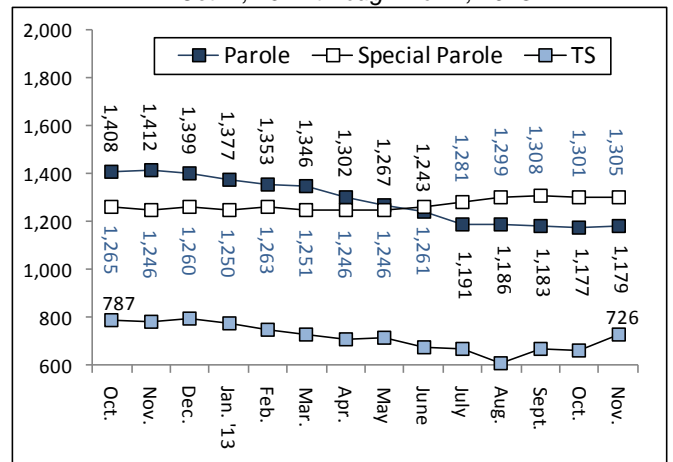


Chart 8 – Parole, TS and Special Parole, supervised cases
Oct. 1, 2012 through Nov. 1, 2013



Note: Data for all charts, with the exception of Chart 5, was supplied by CT DOC. Data for Chart 5 is based on new case starts in the state Offender-Based Tracking System (OBTS). Chart 8 includes offenders in halfway houses.