

OPM - Criminal Justice Policy & Planning Division

Monthly Indicators Report

Highlights

- On March 1, 16,441 offenders were incarcerated in CT prisons. During February the prison population fell by 116. The sentenced population remained about the same; the pre-trial population dropped by approximately 125.
- DOC Commissioner Leo Arnone announced his retirement earlier this year. After 39 years of state service, his last day on the job was on March 22nd. During his tenure as Commissioner, the state closed 3 prisons and the prison population declined by almost 2,000.
- There is a wide disparity between the percentages of minority residents in the state and minorities involved with the state's criminal justice system. Although little consensus exists about the cause, DOC data indicates that the degree of disparity within the prison system had declined moderately in recent years. Between 2010 and 2013, the percentage of inmates who identified themselves as Black or Hispanic dropped from 68.9% to 66.9% (see chart 2b).
- Police agencies in the state made 6,499 criminal arrests in the state in February 2013. This figure represents the lowest monthly arrest total in over 10 years. Sources at the Judicial Branch theorize that multiple factors explain the steep decline in arrests witnessed during the last few years (see chart 2a.)

Please direct comments or questions to: opm.mir@ct.gov

Prison Population Forecast

OPM's 2013 prison population forecast is off to a good start – a hopeful early sign that this year's estimate will track closer to events than last year's.

Given that no significant pieces of legislation or administrative policy that could impact the prison population have emerged, seasonal factors should drive fluctuations in the inmate count over the coming year.

It is important to remember that the prison population is a function of 1) the number of offenders admitted each month 2) the number released or discharged, and 3) the average number of prison-bed days per offender. While we can easily count the offenders coming in and leaving, each month, the length-of-stay calculation is less straight forward. The problem is particularly acute with respect to pre-trial detainees.

In order to shed some more light on this situation, we now publish first-of-the-month data on how long the state's pre-trial prisoners have been incarcerated since their last DOC admission (see table 5a). On March 1, 2013, for example, 13.4% of pre-trial offenders had been in prison for less than one week. In contrast 21.7% had been in prison for over 30 weeks.

TABLE 1 –Prison Population Forecast

	Avg. Daily Count, Actual	OPM 2012 Forecast	Diff. %
JAN 2013	16,347	16,347	-
FEB	16,712	16,763	0.3%
MAR	16,619	16,673	0.3%
APR		16,655	-
MAY		16,551	-
JUN		16,522	-
JUL		16,515	-
AUG		16,530	-
SEP		16,584	-
OCT		16,635	-
NOV		16,500	-
DEC		16,314	-
JAN 2014		16,010	-
FEB		16,215	-

Average Daily Count for first week of month

CHART 1 – Actual ADC of the prison population against the OPM forecast
January 1, 2012 through February 1, 2014

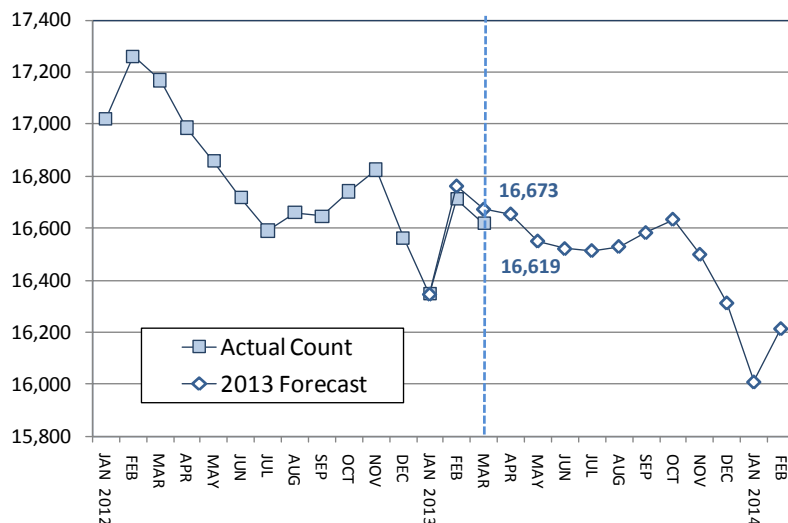
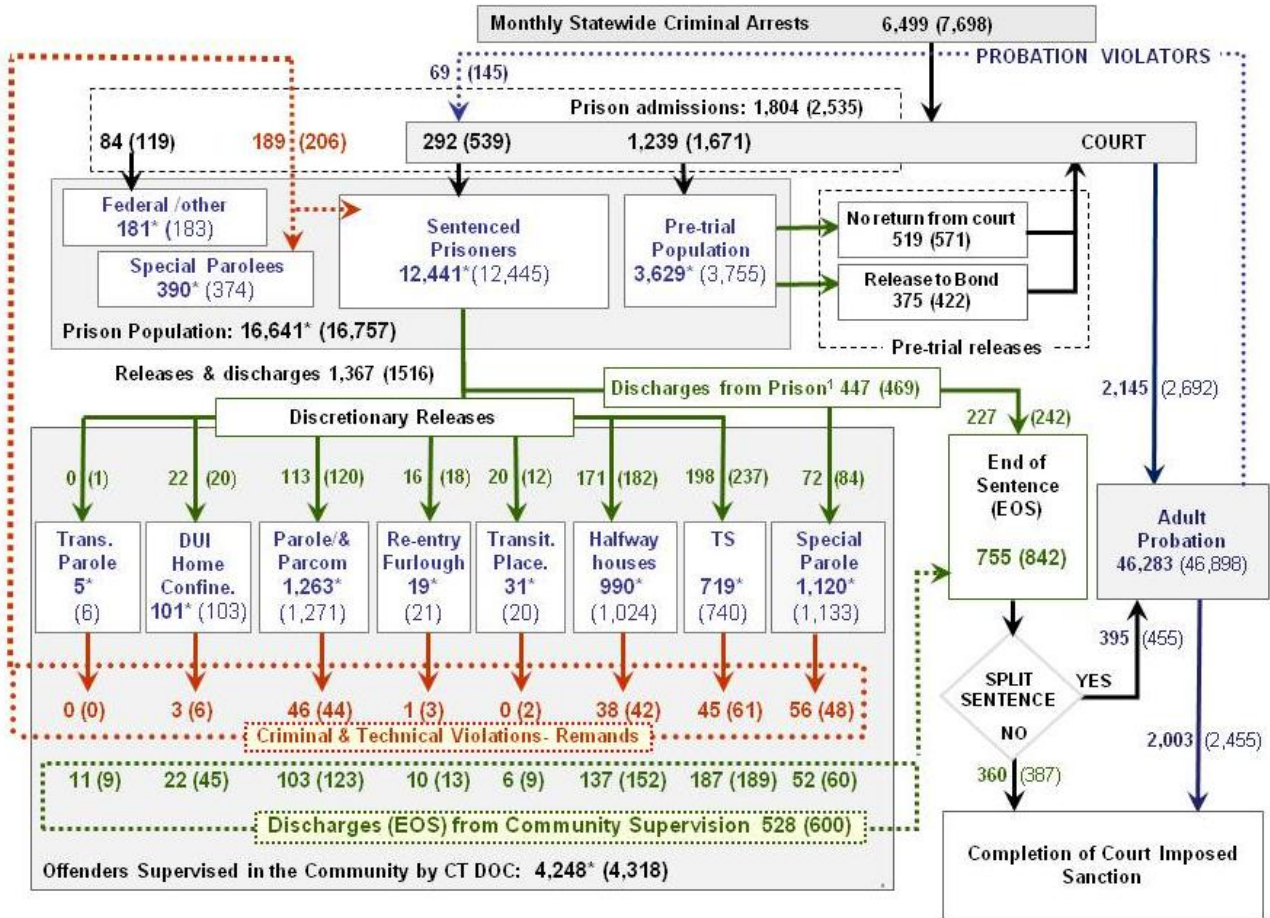


CHART 2 – Connecticut Criminal Justice System – Monthly Overview



This chart contains monthly operational data for February 2013 and daily counts reported on March 1, 2013. Asterisks (*) indicate the daily count on March 1st. Numbers enclosed by parenthesis are for the previous month. ¹DOC facility reports indicate that 447 offenders discharged (EOS) from DOC facilities during the month. Sources include: Arrest data - OBTS, Court and probation data - CSSD, all other data - CT DOC

CHART 2a – Statewide criminal arrests, January 2009 through February 2013

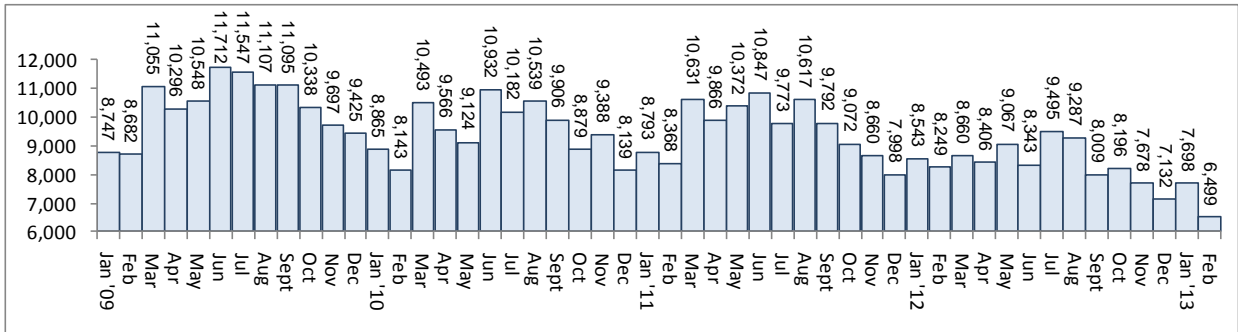


CHART 2b – Black and Hispanic prisoners as a percentage of the total inmate population

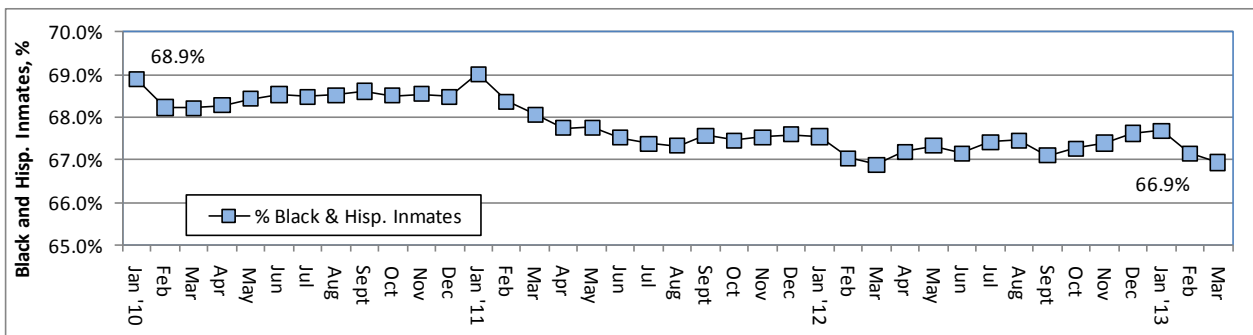


TABLE 2 – DOC Population Counts, First of the Month

	2012	2013	2013	2012	% Change	
	Dec.	Jan.	Feb.	Feb.	Monthly	Annual
DOC Facilities						
Federal/Other	164	183	181	172	-1.1%	5.2%
Sentenced	12,104	12,445	12,441	13,051	0.0%	-4.7%
Special Parole	382	374	390	313	4.3%	24.6%
Pre-trial	3,697	3,755	3,629	3,633	-3.4%	-0.1%
Total	16,347	16,757	16,641	17,169	-0.7%	-3.1%
DOC Community						
Transfer Parole	7	6	5	8	-16.7%	-37.5%
Parole/ Parcom Total	1,295	1,271	1,263	1,237	-0.6%	2.1%
Parole	1,126	1,104	1,092	1,069	-1.1%	2.2%
Parcom @ CT	169	167	171	168	2.4%	1.8%
Furlough	21	21	19	17	-9.5%	11.8%
Trans Placement	24	20	31	13	55.0%	138.5%
Home confinement/DUI	133	103	101	2	-1.9%	-
Halfway House Total	1,022	1,024	990	1,101	-3.3%	-10.1%
Comm Release	819	803	776	868	-3.4%	-10.6%
TS	11	9	9	15	0.0%	-40.0%
Parole	82	82	73	92	-11.0%	-20.7%
Transfer Parole	0	0	0	0	-	-
Special Parole	110	130	131	124	0.8%	5.6%
TS Total	753	740	719	710	-2.8%	1.3%
Special Parole	1,140	1,133	1,120	1,092	-1.1%	2.6%
Total	4,395	4,318	4,248	4,180	-1.6%	1.6%

TABLE 3 – DOC Admissions and Releases, Monthly Totals*

	2012	2013	2013	2012	% Change	
	Dec.	Jan.	Feb.	Feb.	Monthly	Annual
Admissions						
Federal/Other	75	119	84	104	-29.4%	-19.2%
Returns	177	206	189	165	-8.3%	14.5%
Trans.Parole / DUI	6	6	3	0	-	-
Parole	34	44	46	27	4.5%	70.4%
Trans Plac/Furlough	1	5	1	0	-	-
HWH	45	42	38	31	-9.5%	22.6%
TS	43	61	45	46	-26.2%	-2.2%
Special Parole	48	48	56	61	16.7%	-8.2%
New Sentence	194	539	292	422	-45.8%	-30.8%
VOP	61	145	69	109	-52.4%	-36.7%
Pre-trial	1,446	1,671	1,239	1,542	-25.9%	-19.6%
Total	1,892	2,535	1,804	2,233	-28.8%	-19.2%
Releases						
Transfer Parole	1	1	0	7	-	-
Parole	114	120	113	127	-5.8%	-11.0%
Furlough	18	18	16	17	-11.1%	-5.9%
Transfer Placement	16	12	20	8	66.7%	-
Home Confinement DUI	35	20	22	2	10.0%	-
HWH	187	182	171	188	-6.0%	-9.0%
TS	210	237	198	210	-16.5%	-5.7%
Special Parole	66	84	72	84	-14.3%	-14.3%
End of Sentence	862	842	755	996	-10.3%	-24.2%
Total	1,509	1,516	1,367	1,639	-9.8%	-16.6%
Pre-trial Releases*						
Did not return from Court	556	571	519	550	-9.1%	-5.6%
Release to Bond	418	422	375	453	-11.1%	-17.2%

* Totals reflect events not individuals.

Board of Pardons and Parole

TABLE 4a – Inmates with sentences greater than 24 months

	Parole eligible	Not eligible
Jan. '13	8,284	844
Feb.	8,331	843
Mar.	8,344	847

TABLE 4b – Parole hearings

	Hearings	Granted	Rate
Dec.	146	110	75%
Jan. '13	122	91	75%
Feb.	121	77	64%

DOC – Pre-trial offenders

TABLE 5 – Bond ranges, pre-trial prisoners

Bond amount	Jan. 1, 2013	Feb. 1, 2013	Mar. 1, 2013
Less than \$20K	17.2%	16.9%	17.1%
\$20K to < \$50K	16.2%	16.2%	15.5%
\$50K to < \$100K	22.3%	21.8%	21.1%
\$100K or higher	44.3%	44.9%	46.3%
Over \$1M	6.2%	6.2%	6.4%

TABLE 5a – Pre-trial inmates, length-of-stay

Weeks since last DOC admit	Jan. 1, 2013	Feb. 1, 2013	Mar. 1, 2013
< 1 week	9.7%	13.2%	13.3%
1 to < 3 weeks	11.8%	11.1%	8.8%
3 to < 10 weeks	24.6%	25.1%	25.9%
10 to < 30 weeks	33.1%	30.1%	30.3%
30 wks or more	20.8%	20.5%	21.7%
	100%	100%	100%

Jail Re-interview Program

TABLE 6 – Monthly interviews and releases

	Offenders interviewed	Offenders released	Releases last year
Dec.	1,609	878	731
Jan. '13	1,756	926	680
Feb.	1,370	852	689

CSSD – Adult Probation

TABLE 7 –Pre-Trial & split-sentence starts

	Pre-trial Bail Case Starts	Client Supv. Starts	Split Sentence Starts
Dec.	2,086	2,190	448
Jan. '13	2,515	2,690	455
Feb.	1,929	2,145	395

DUI home confinement

TABLE 8 – Releases and discharges

	Monthly releases to	On home confinement, 1st of month	Monthly discharges from
Jan. '13	20	133	45
Feb.	22	103	22
Mar.	-	101	-

Note: Figures published here are based on operational data available at the time of publication. Data in subsequent issues may not agree.

CHART 3 – Prison Population
March 1, 2012 to March 7, 2012

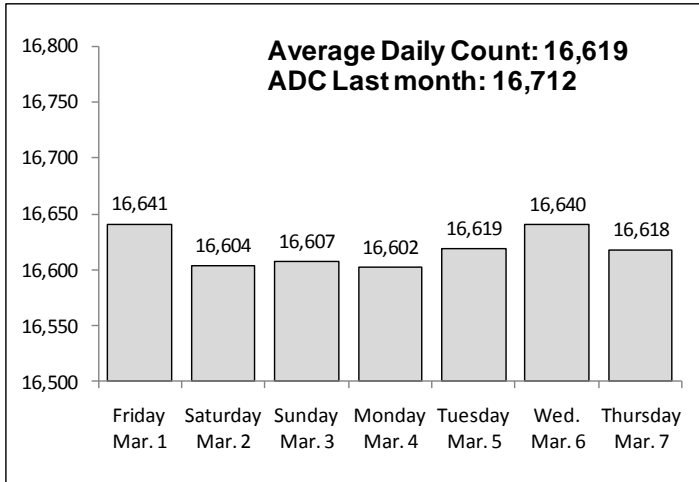


CHART 6 – Monthly DOC Admissions by Type
Jan. 2012 through Feb. 2013

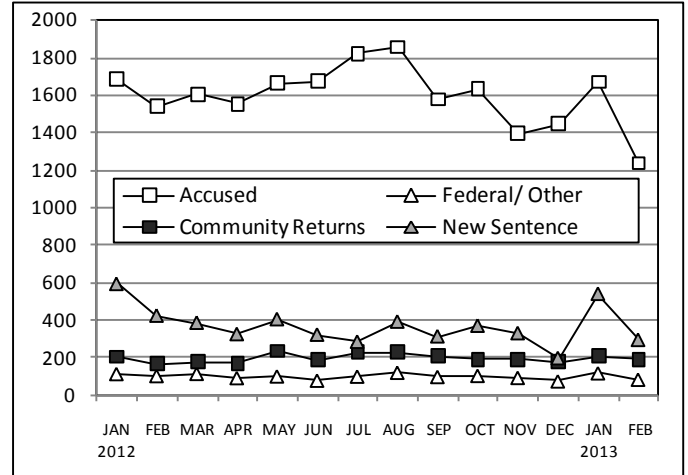


CHART 4 – Prison Population, first-of-month
2011 through 2013

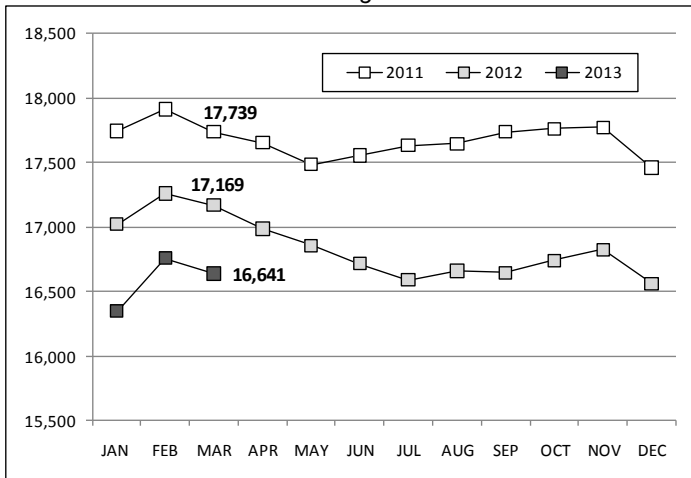


CHART 7 – Readmissions from Community Release
February 2013

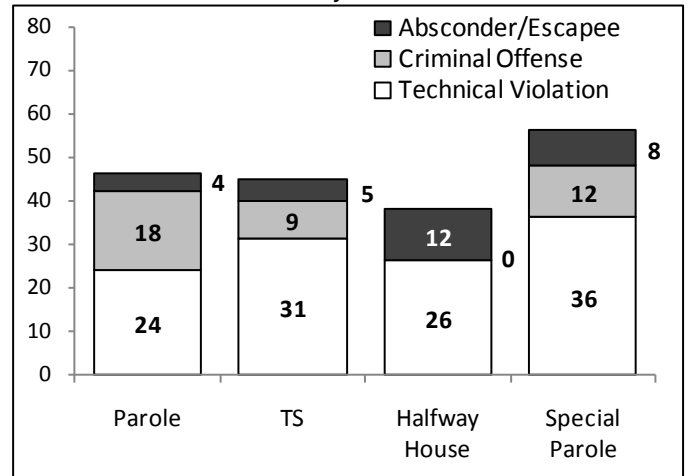


CHART 5 – Monthly Statewide Criminal Arrests
2012 versus 2013

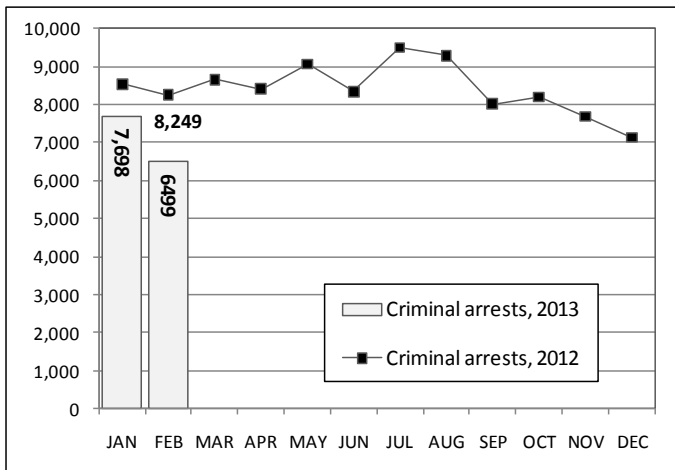
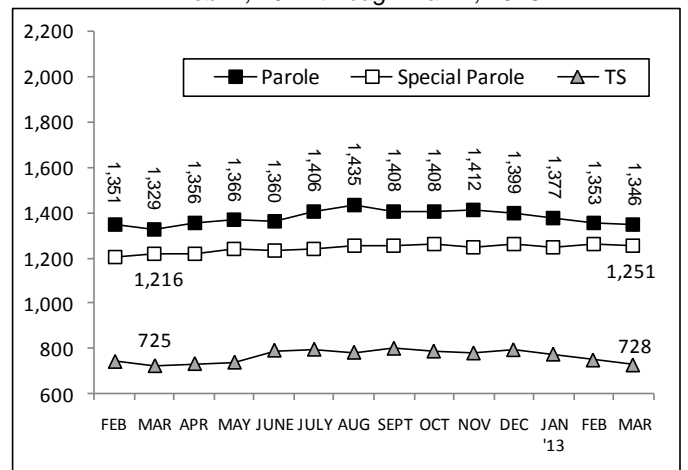


CHART 8 – Parole, TS and Special Parole, supervised cases
Feb. 1, 2012 through Mar. 1, 2013



Note: Data for all charts, with the exception of Chart 5, was supplied by CT DOC. Data for Chart 5 is based on new case starts in the state Offender-Based Tracking System (OBTS).