

# OPM - Criminal Justice Policy & Planning Division Monthly Indicators Report



## Highlights

- On November 1, 16,828 offenders were incarcerated in state prisons. Since August, the sentenced population has declined by 85; the pre-trial is up by 260 (see charts 2A and 2B).
- In October, 397 offenders were discharged from prison having earned at least one day of Risk Reduction Earned Credit (RREC). The average prisoner had his/her sentence shortened by 60.5 days.
- 329 offenders, who had already been released to community supervision, also discharged last month having received RREC. Among this group, the average offender earned 96 days.
- The DUI home confinement program is continues to expand. On Nov. 1, 133 DUI offenders were under supervision in the community.
- Monthly arrests totals remain below the levels reported in recent years. Although arrests were down compared to last month, the number of pre-trial prison admits rose. Jail re-interview releases were up from September but down from last year.
- Remands are up compared to last year (see table 3). In October 2012, 192 offenders were remanded by the DOC. This represents a 13% increase over the 169 offenders who were remanded during October 2011.

Please direct any comments, questions or suggestions to:  
[opm.mir@ct.gov](mailto:opm.mir@ct.gov)

## Prison Population Forecast

OPM's projection of the prison population published in February 2012, consistently missed the mark through the year. By July 2012, the forecast was off by almost 700 offenders, or 3.6%. Contrary to the expected seasonal trend, the prison population continued to fall well into July. In the last two months, a period where we usually witness a drop in inmate numbers, the prison population has continued to rise.

OPM's prison population model relies heavily on trend data compiled over the last decade.

Although the prison population has fluctuated considerably during this period, in most months, the population fell within a relatively restricted range. In the 144 month period between January 2000 and December 2011, the prison population never fell below 17,000 and it remained between 17,500 and 19,500 at least 85% of the time.

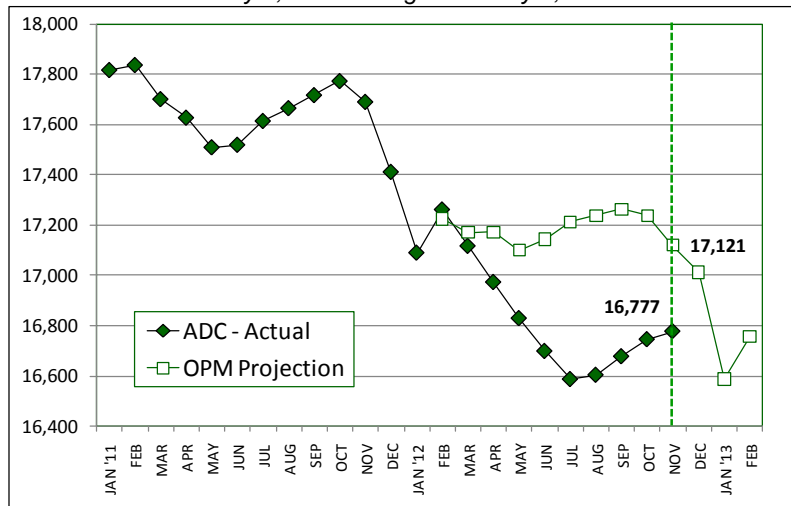
Over the last 8 months the prison population has remained below 17,000. We now appear to be in a period where the historical data no longer provides reliable baselines for system performance or operating limits. OPM will produce a new forecast in February. Over the next several months it is anticipated that the CJ PAC Research Workgroup will be critical in developing new forecasting criteria.

TABLE 1 --Prison Population Forecast

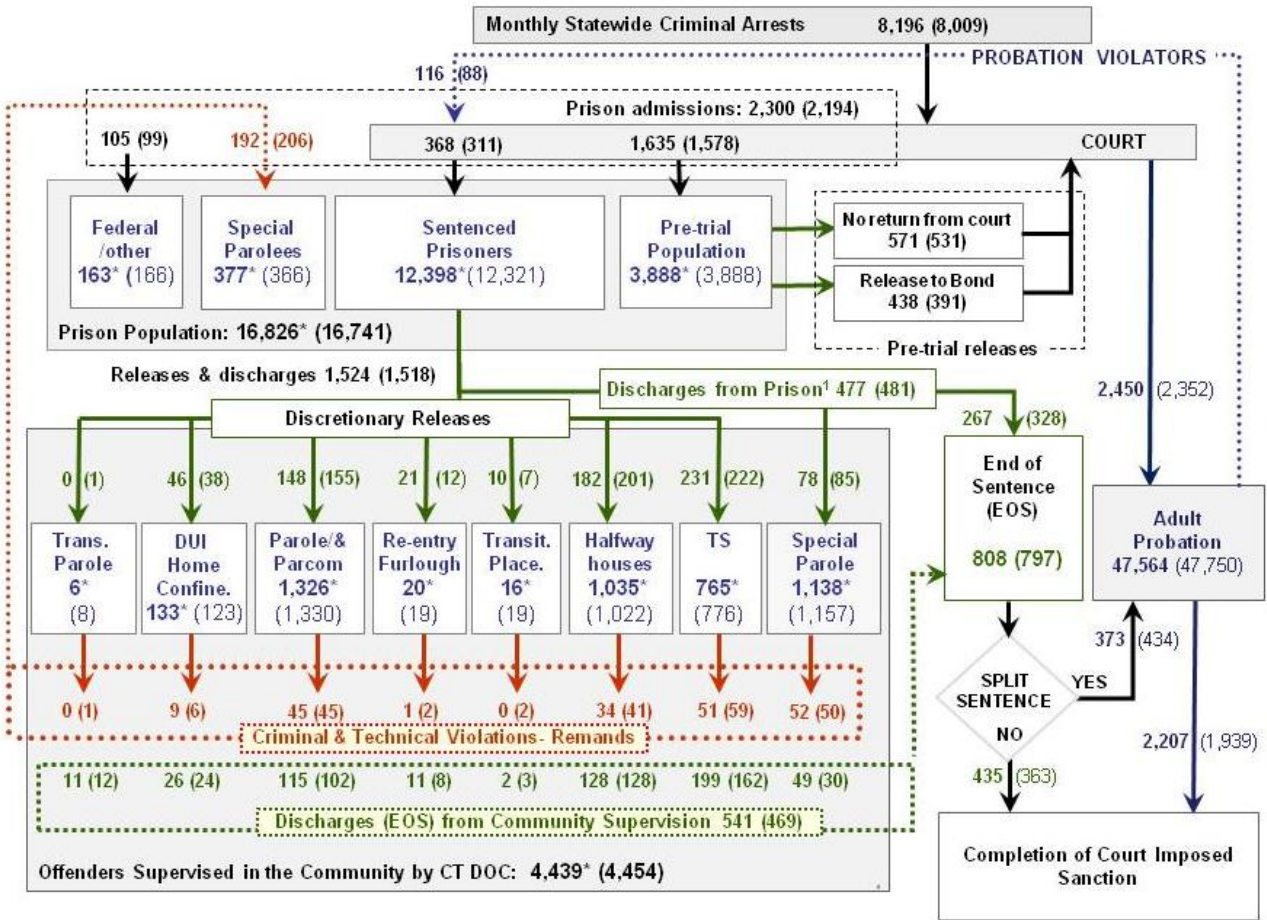
	Actual (*Avg Daily Count)	OPM 2011 Forecast	Diff. %
FEB '12	17,224*	17,224	
MAR	17,117*	17,171	-0.3%
APR	16,973*	17,172	-1.2%
MAY	16,829*	17,100	-1.6%
JUN	16,698*	17,143	-2.6%
JUL	16,586*	17,213	-3.6%
AUG	16,603*	17,238	-3.7%
SEP	16,677*	17,263	-3.4%
OCT	16,745*	17,238	-2.9%
NOV	16,777*	17,121	-2.0%
DEC	-	17,013	
JAN '13	-	16,587	
FEB	-	16,756	

\* Average Daily Count, first week of month

CHART 1 – Actual ADC of the prison population against the OPM forecast  
January 1, 2011 through February 1, 2013

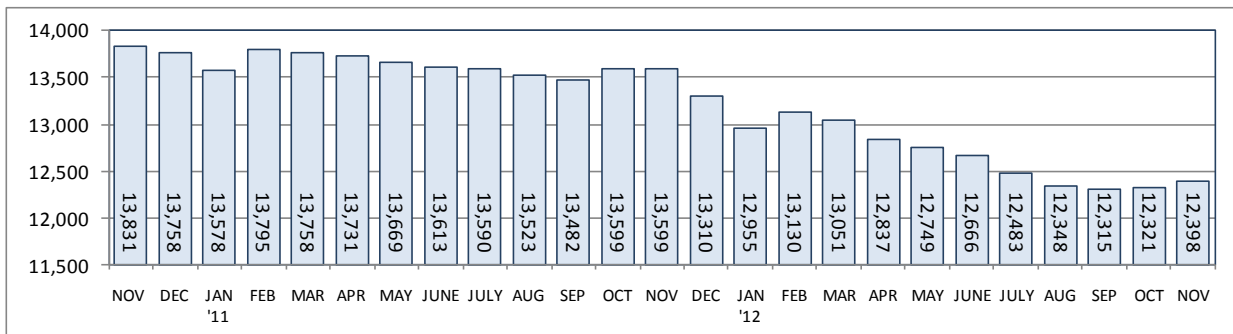


## CHART 2 – Connecticut Criminal Justice System – Monthly Overview

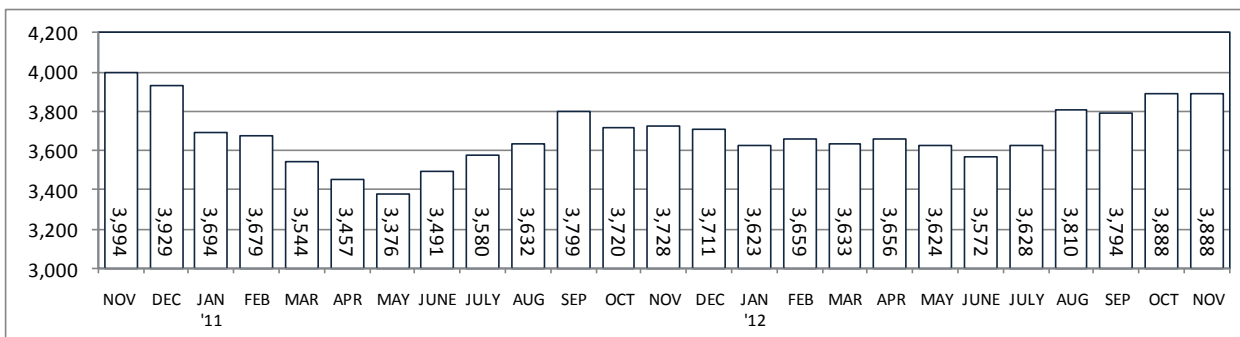


This chart contains monthly operational data for October 2012 and daily counts reported on November 1, 2012. Asterisks (\*) indicate counts on November 1st. Numbers enclosed by parenthesis are for the previous month.  
<sup>1</sup> The DOC reports that 477 offenders discharged (EOS) from DOC facilities during September.  
 Sources include: Arrest data - OBTS, Court and probation data - CSSD, all other data CT DOC

### CHART 2A – Sentenced prisoners – November 1, 2010 through November 1, 2012



### CHART 2B – Pre-trial prisoners – November 1, 2010 through November 1, 2012



**TABLE 2 – DOC Population Counts, First of the Month**

	2012	2012	2012	2011	% Change	
	Sept. 1	Oct. 1	Nov. 1	Nov. 1	Monthly	Annual
<b>DOC Facilities</b>						
Federal/Other	172	166	163	152	-1.8%	7.2%
Sentenced	12,315	12,321	12,398	13,599	0.6%	-8.8%
Special Parole	365	366	377	295	3.0%	27.8%
Pre-trial	3,794	3,888	3,888	3,728	0.0%	4.3%
<b>Total</b>	<b>16,646</b>	<b>16,741</b>	<b>16,826</b>	<b>17,774</b>	<b>0.5%</b>	<b>-5.3%</b>
<b>DOC Community</b>						
Transfer Parole	10	8	6	19	-25.0%	-68.4%
Parole/ Parcom Total	1,318	1,330	1,326	1,539	-0.3%	-13.8%
Parole	1,152	1,161	1,155	1,363	-0.5%	-15.3%
Parcom @ CT	166	169	171	176	1.2%	-2.8%
Furlough	20	19	20	13	5.3%	53.8%
Trans Placement	20	19	16	8	-15.8%	100.0%
Home confinement/DUI	117	123	133	0	8.1%	-
Halfway House Total	1,050	1,022	1,035	1,085	1.3%	-4.6%
Comm Release	855	825	825	842	0.0%	-2.0%
TS	9	11	14	19	27.3%	-26.3%
Parole	80	78	86	114	10.3%	-24.6%
Transfer Parole	0	0	0	0	-	-
Special Parole	106	108	108	110	0.0%	-1.8%
TS Total	790	776	765	848	-1.4%	-9.8%
Special Parole	1,142	1,157	1,138	1,023	-1.6%	11.2%
<b>Total</b>	<b>4,467</b>	<b>4,454</b>	<b>4,439</b>	<b>4,535</b>	<b>-0.3%</b>	<b>-2.1%</b>

**TABLE 3 – DOC Admissions and Releases, Monthly Totals\***

	2012	2012	2012	2011	% Change	
	Aug.	Sept.	Oct.	Oct.	Monthly	Annual
<b>Admissions</b>						
Federal/Other	122	99	105	84	6.1%	25.0%
Returns	227	206	192	169	-6.8%	13.6%
Trans.Parole / DUI	8	7	9	2	-	-
Parole	51	45	45	46	0.0%	-2.2%
Trans Plac/Furlough	3	4	1	1	-	-
HWH	50	41	34	35	-17.1%	-2.9%
TS	56	59	51	41	-13.6%	24.4%
Special Parole	59	50	52	44	4.0%	18.2%
New Sentence	390	311	368	379	18.3%	-2.9%
VOP	107	88	116	114	31.8%	1.8%
Pre-trial	1,856	1,578	1,635	1665	3.6%	-1.8%
<b>Total</b>	<b>2,595</b>	<b>2,194</b>	<b>2,300</b>	<b>2,297</b>	<b>4.8%</b>	<b>0.1%</b>
<b>Releases</b>						
Transfer Parole	2	1	0	15	-	-
Parole	158	155	148	193	-4.5%	-23.3%
Furlough	24	12	21	15	75.0%	40.0%
Transfer Placement	10	7	10	1	42.9%	-
Home Confinement DUI	47	38	46	0	21.1%	-
HWH	226	201	182	194	-9.5%	-6.2%
TS	290	222	231	251	4.1%	-8.0%
Special Parole	86	85	78	113	-8.2%	-31.0%
End of Sentence	948	797	808	940	1.4%	-14.0%
<b>Total</b>	<b>1,791</b>	<b>1,518</b>	<b>1,524</b>	<b>1,722</b>	<b>0.4%</b>	<b>-11.5%</b>
<b>Pre-trial Releases*</b>						
Did not return from Court	697	531	571	581	7.5%	-1.7%
Release to Bond	535	391	438	459	12.0%	-4.6%

\*Monthly totals count occurrences, not individuals.

**Board of Pardons and Parole**

**TABLE 4 – Inmates with sentences greater than 24 months**

	Parole eligible	Not eligible
SEPT	8,326	841
OCT	8,289	842
NOV	8,284	841

**TABLE 4A – Parole hearings**

	Hearings	Granted	Rate
AUG	211	151	72%
SEPT	157	104	66%
OCT	132	93	70%

**TABLE 4B – Other Parole Hearings**

	Revocations		Rescissions	
	Reparoled	Denied	Reparoled	Denied
AUG	63	33	23	14
SEP	27	20	14	11
OCT	41	40	12	10

**DOC - Sentenced admits**

**TABLE 5 – Prison sentences by crime type**

Offense types	Oct.	Sept.	Aug.
Against persons	50	50	46
Against property	48	52	52
Drug related	190	157	223
Public order	82	75	96
Other	34	22	20
<b>Total sentences</b>	<b>404</b>	<b>356</b>	<b>437</b>

**CSSD – Adult Probation**

**TABLE 6 – Pre-trial and split sentence starts**

	Pre-trial Bail Case Starts	Client Supv. Starts	Split Sentence Starts
	AUG	2,660	2,573
SEPT	2,129	2,352	434
OCT	2,321	2,450	373

**Pre-trial Diversion and Supervision**

**TABLE 7 – The Jail Re-interview Program**

	Offenders interviewed	Offenders released	Releases last year
	AUG	1,315	817
SEPT	1,135	620	807
OCT	1,135	659	751

Data Notes: Figures are based on operational data available at the time of this report. Data in subsequent issues may not agree.

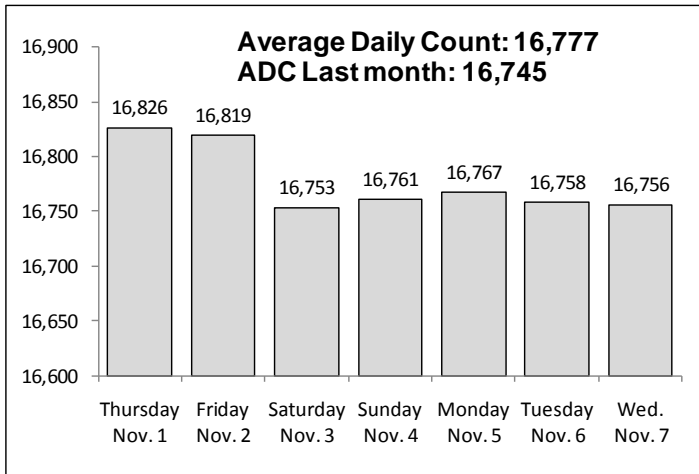
**DUI home confinement**

**TABLE 8 – Releases and discharges**

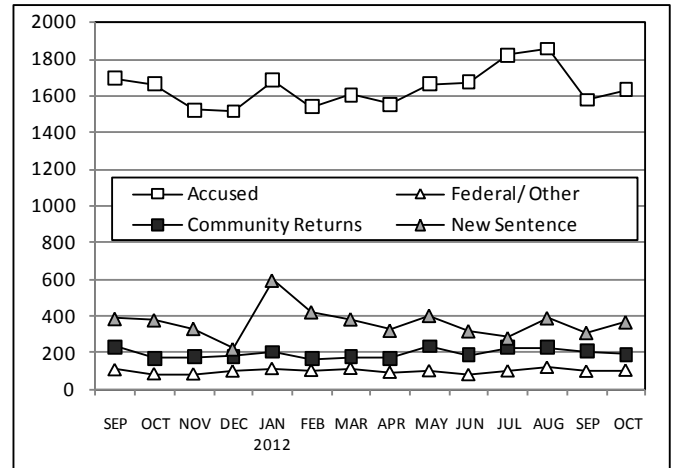
	Monthly releases to...	On home confinement, 1st of month	Monthly discharges from ...
	AUG	47	116
SEP	38	117	24
OCT	46	123	26
NOV	-	133	-

Source: CT DOC

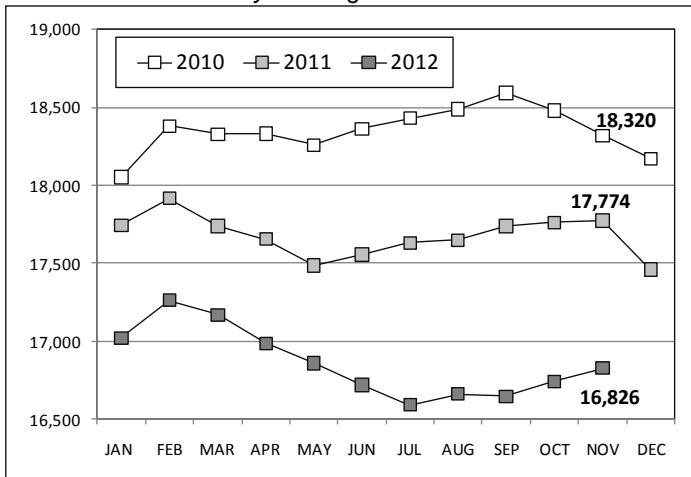
**CHART 3 – Prison Population**  
November 1, 2012 to November 7, 2012



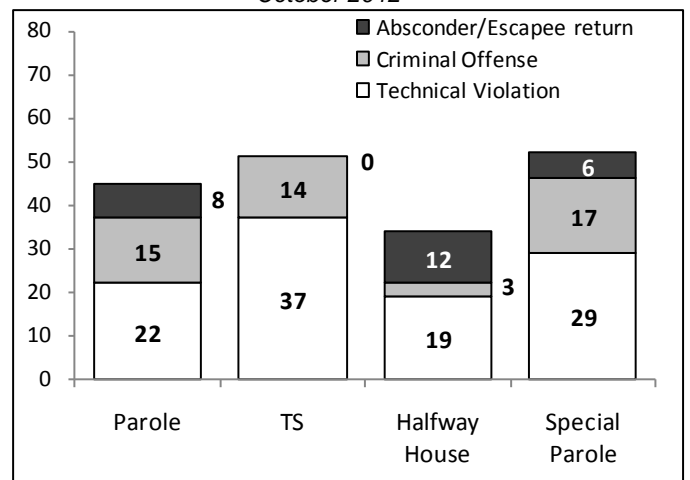
**CHART 6 – Monthly DOC Admissions by Type**  
Sept. 2011 through Oct. 2012



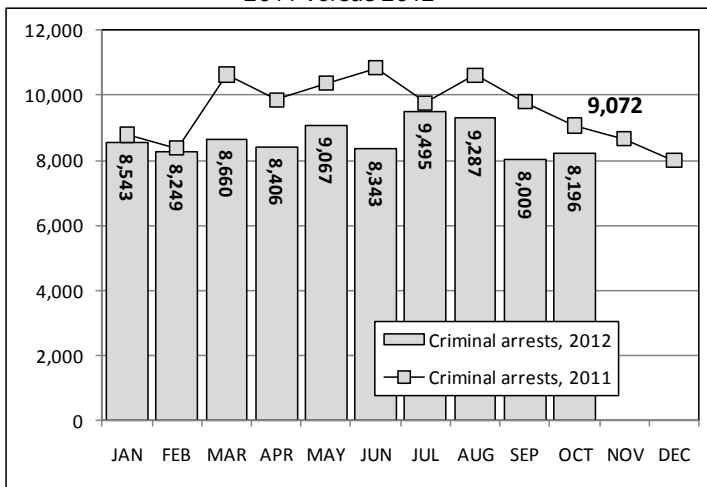
**CHART 4 – Prison Population, first-of-month**  
January 1 through December 1



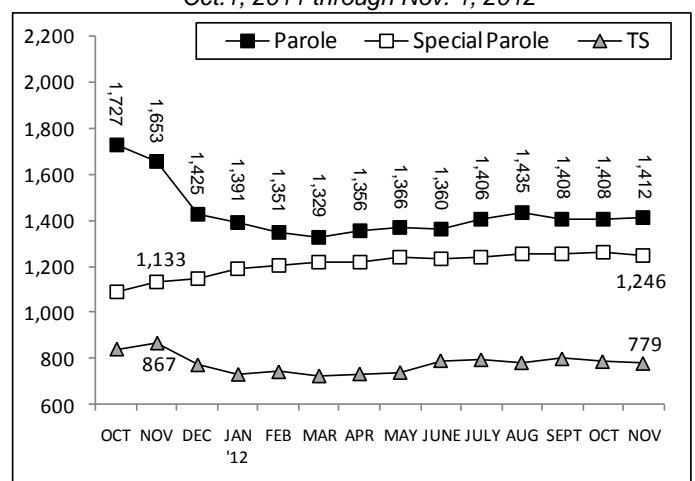
**CHART 7 – Readmissions from Community Release**  
October 2012



**CHART 5 – Monthly Statewide Criminal Arrests**  
2011 versus 2012



**CHART 8 – Parole, TS and Special Parole, supervised cases**  
Oct. 1, 2011 through Nov. 1, 2012



Note: Data for all charts, with the exception of Chart 5, was supplied by CT DOC. Data for Chart 5 is based on new case starts in the state Offender-Based Tracking System (OBTS).