

OPM - Criminal Justice Policy & Planning Division Monthly Indicators Report



Published by the Connecticut Statistical Analysis Center at the Connecticut Office of Policy & Management

Highlights

- On July 1, 16,591 people were incarcerated in state prison facilities. The last time this figure was lower on July 1 was in 1998.
- In June, 978 offenders completed their prison sentences. Of these, 821 received at least one day of Risk Reduction Earned Credit (RREC). Among offenders who discharged with credit, 359 were already in community programs; 462 were discharged directly from prison.
- Chart 2A shows the number of offenders who discharged their prison sentences between January 2010 and June 2012. RREC was expanded to prisoners during November 2011; the chart shows that following an initial spike in discharges due to the retroactive application of RREC credits, the volume of monthly discharges has not risen dramatically.
- The number of offenders on home confinement for DUI and minor drug offenses rose to 119 by July 1st (see table 2). It has been reported that up to 60% of these offenders continue to hold jobs while on home confinement.

Page 2 has been revised. In future issues, the charts and tables at the bottom of page 2 will change each month. They will feature more trend data and information on developments in the state's criminal justice system. In this issue, page 2 contains 1) a chart of monthly prison discharges from Jan. 2010 through June 2012, and 2) a chart of the July 1st prison population from 1992 to 2012,

Prison Population Forecast

The prison population continues to drop at a rate and in a manner that defies historical modelling. Between October 1, 2011 and July 1, 2012, the prison system shrank by 1,171 inmates (Note: table 1 and chart 1 report figures by the Average Daily Count, not the first-of-the-month count). This rate of decline in the prison population is without precedent in Connecticut.

Last month, the prison count fell below the level that OPM projected for January 2013.

OPM's prison population projection is based on a model that relies on 25 years of historical data on the Connecticut prison system. The model produces a set of scenarios that project different rates of growth or decline in the prison population. In consultation with experts who are knowledgeable about current conditions and operations of the prison system, OPM selects a specific scenario to use as its projection over the following year. In January 2012, OPM assumed that the prison population would continue to decline as it has in recent years. What OPM did not anticipate was the steep and prolonged decline that we have witnessed since October 2011.

TABLE 1 –Prison Population Forecast

	Actual (*Avg Daily Count)	OPM 2011 Forecast	Diff. %
FEB '12	17,224*	17,224	
MAR	17,117*	17,171	-0.3%
APR	16,973*	17,172	-1.2%
MAY	16,829*	17,100	-1.6%
JUN	16,698*	17,143	-2.6%
JUL	16,586*	17,213	-3.6%
AUG	-	17,238	
SEP	-	17,263	
OCT	-	17,238	
NOV	-	17,121	
DEC	-	17,013	
JAN '13	-	16,587	
FEB	-	16,756	

* Average Daily Count, first week of month

CHART 1 – Actual ADC of the prison population against the OPM forecast
January 1, 2011 through February 1, 2013

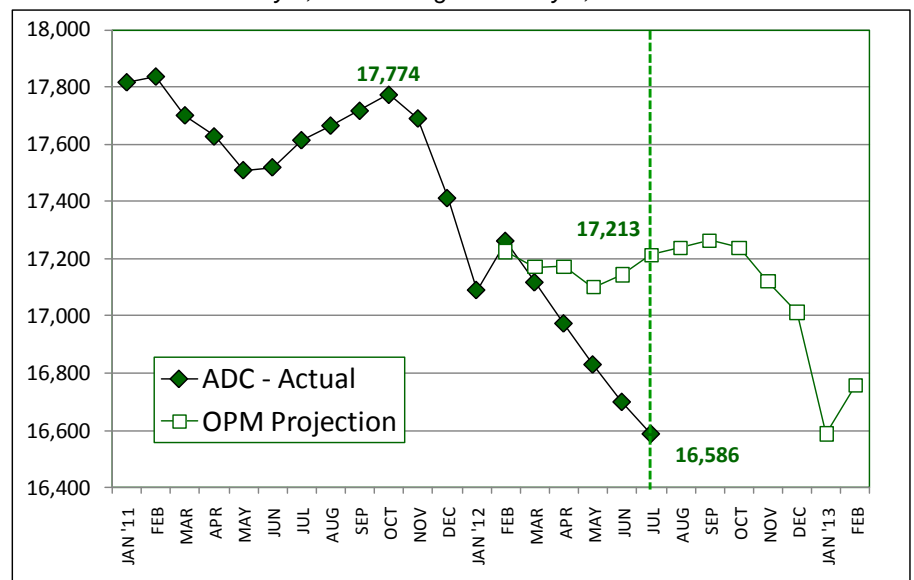
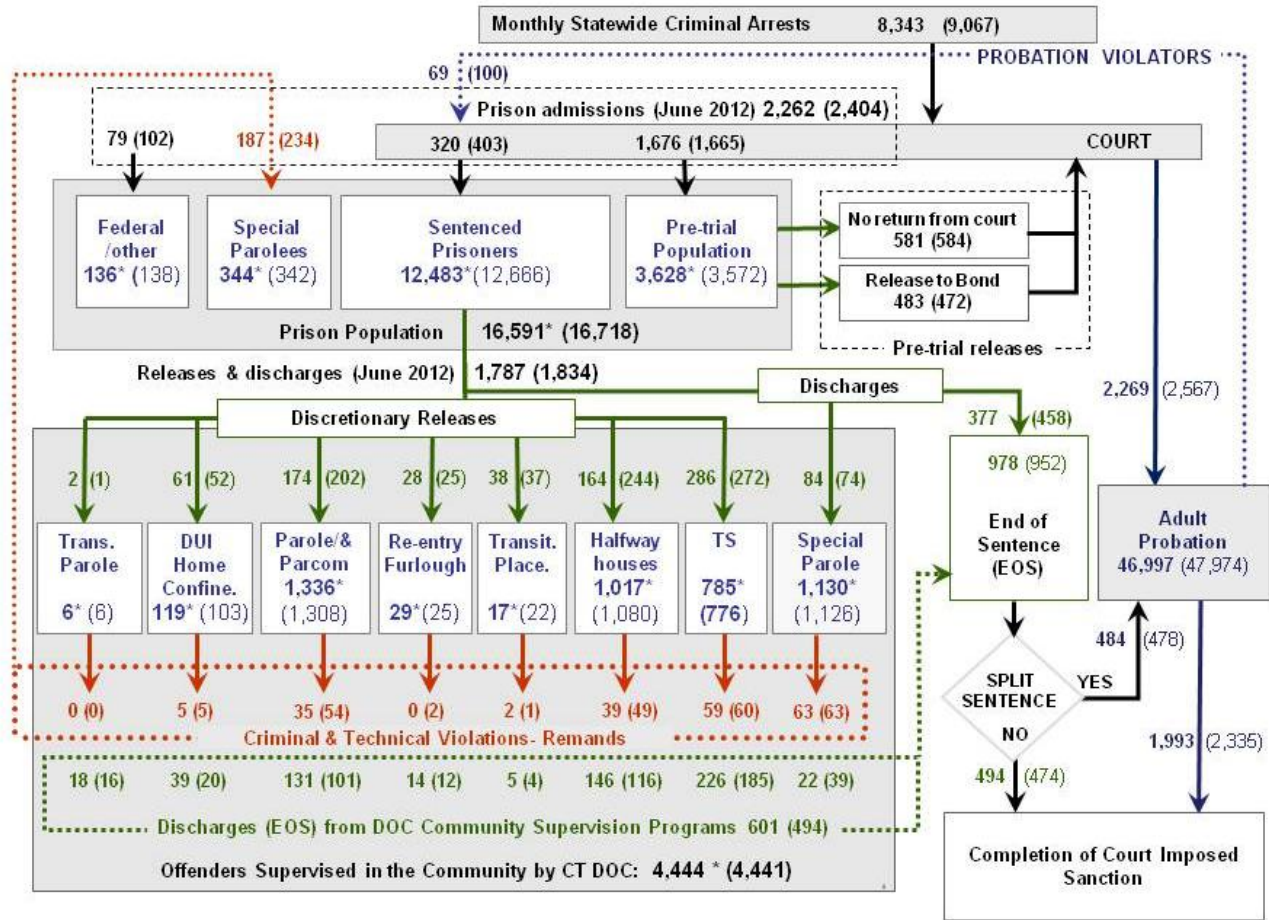


CHART 2 – Connecticut Criminal Justice System – Monthly Overview



This chart contains monthly totals for June 2012 and figures reported for July 1, 2012. Asterisks (*) indicate the count for July 1, 2012. Figures enclosed by parenthesis are for the previous month. Data sources include: Arrests-OBTS, Court and probation data: CSSD, all other data CT DOC

CHART 2A – Monthly discharges, EOS

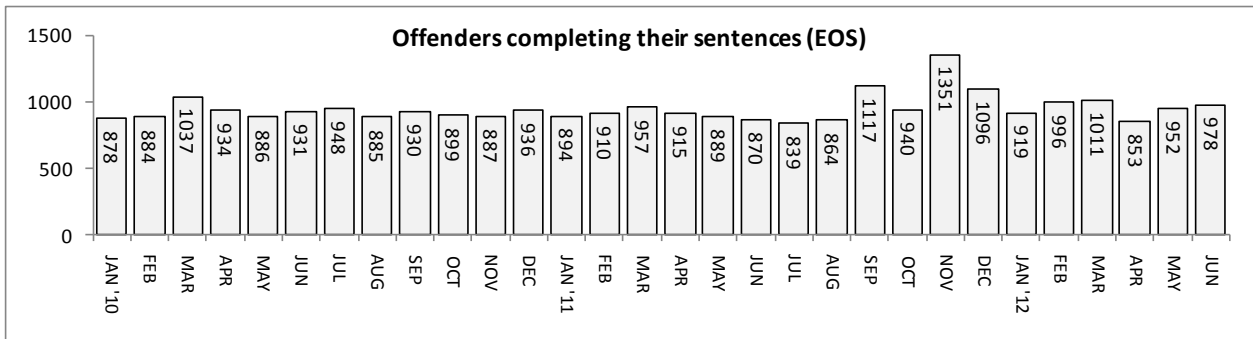


CHART 2B – Connecticut's Prison Population on July 1st, 1992 - 2012

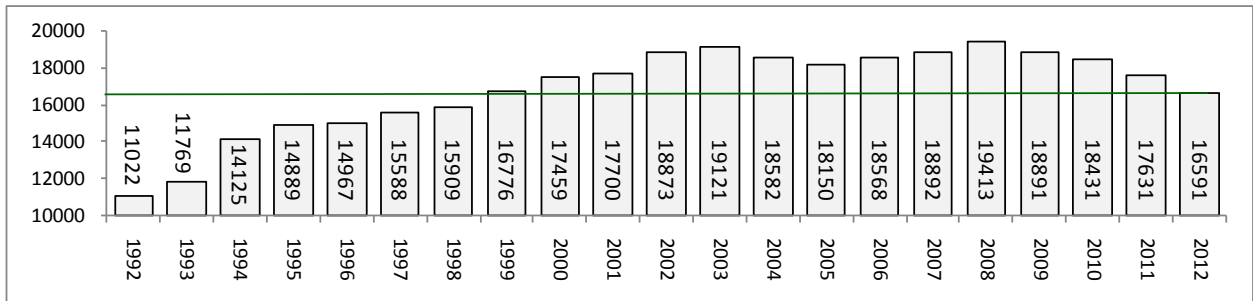


TABLE 2 – DOC Population Counts, First of the Month

	2011	2011	2012	2011	% Change	
	May 1st	June 1	July 1	July 1	Monthly	Annual
DOC Facility						
Federal/Other	158	138	136	139	-1.4%	-2.2%
Sentenced	12,749	12,666	12,483	13,590	-1.4%	-8.1%
Special Parole	327	342	344	322	0.6%	6.8%
Pre-trial	3,624	3,572	3,628	3,580	1.6%	1.3%
Total	16,858	16,718	16,591	17,631	-0.8%	-5.9%
DOC Community						
Transfer Parole	7	6	6	30	0.0%	-80.0%
Parole/ Parcom Total	1,287	1,308	1,336	1,789	2.1%	-25.3%
Parole	1,114	1,133	1,166	1,613	2.9%	-27.7%
Parcom @ CT	173	175	170	176	-2.9%	-3.4%
Furlough	24	25	29	2	16.0%	1350.0%
Trans Placement	11	17	22	13	29.4%	69.2%
Home confinement/DUI	81	103	119	0	15.5%	-
Halfway House Total	1,082	1,080	1,017	1,105	-5.8%	-8.0%
Comm Release	875	879	828	878	-5.8%	-5.7%
TS	16	15	10	14	-33.3%	-28.6%
Parole	79	81	70	103	-13.6%	-32.0%
Transfer Parole	0	0	0	0	-	-
Special Parole	112	105	109	109	3.8%	0.0%
TS Total	724	776	785	996	1.2%	-21.2%
Special Parole	1,129	1,126	1,130	914	0.4%	23.6%
Total	4,345	4,441	4,444	4,849	0.1%	-8.4%

TABLE 3 – DOC Admissions and Releases, Monthly Totals*

	2011	2011	2012	2011	% Change	
	Apr.	May	June	June	Monthly	Annual
Admissions						
Federal/Other	93	102	79	106	-22.5%	-25.5%
Returns	168	234	187	212	-20.1%	-11.8%
Transfer Parole	0	5	5	2	-	-
Parole	43	54	35	58	-35.2%	-39.7%
Trans Plac/Furlough	1	3	2	5	-	-
HWH	41	49	39	32	-20.4%	21.9%
TS	45	60	59	37	-1.7%	59.5%
Special Parole	38	63	47	43	-25.4%	9.3%
New Sentence	323	403	320	367	-20.6%	-12.8%
VOP	91	100	69	100	-31.0%	-31.0%
Pre-trial	1,555	1,665	1,676	1748	0.7%	-4.1%
Total	2,139	2,404	2,262	2,433	-5.9%	-7.0%
Releases						
Transfer Parole	2	1	2	18	100.0%	-88.9%
Parole	158	202	174	187	-13.9%	-7.0%
Trans Plac/Furlough	32	37	38	7	2.7%	442.9%
Home Confinement DUI	55	52	61	0	17.3%	-
HWH	183	244	164	182	-32.8%	-9.9%
TS	231	272	286	294	5.1%	-2.7%
Special Parole	70	74	84	75	13.5%	12.0%
End of Sentence	853	952	978	870	2.7%	12.4%
Total	1,584	1,834	1,787	1,633	-2.6%	9.4%
Pre-trial Releases*						
Did not return from Court	575	584	581	560	-0.5%	3.8%
Release to Bond	401	472	483	523	2.3%	-7.6%

*Monthly totals count occurrences, not individuals.

Board of Pardons and Parole

TABLE 4 - Prisoners with sentences greater than 24 months

	Parole eligible	Not eligible
MAY	8,529	831
JUNE	8,456	835
JULY	8,384	838

TABLE 4A – Paroles Granted, New cases

	Hearings	Granted	Rate
APR	213	162	76%
MAY	200	150	75%
JUNE	150	114	76%

TABLE 4B – Other Parole Hearings

	Revocations		Rescissions	
	Reparoled	Denied	Reparoled	Denied
APR	34	24	15	13
MAY	63	32	14	16
JUN	37	20	14	11

Public Defender Services

TABLE 5 – Public Defender Cases

	Cases appointed		Cases disposed	
	GA	JD	GA	JD
MAR	5,671	225	4,245	161
APR	5,292	208	4,130	178
MAY	6,112	322	4,556	183

CSSD – Adult Probation

TABLE 6 – Monthly CSSD Direct Sentenced & Probationer Community Placements

	Community Based	Out-patient	Inpatient/ Resident	Total
FEB	787	1,223	22*	2,032
MAR	1,263	809	31	2,103
APR	1,118	823	22	1,963

*Inpatient residential figure for February reflects a counting change by CSSD. May data was not available at the time of publication.

Pre-trial Diversion and Supervision

TABLE 7 –Pre-trial and split sentence starts

	Pre-trial Case Starts	Bail Starts	Client Supv. Starts	Split Sentence Starts
APR	2,389	2,402	455	
MAY	2,588	2,567	478	
JUN	2,464	2,269	484	

TABLE 8 – The Jail Re-interview Program

	Offenders interviewed	Offenders released	Releases last year
MAR	1,258	702	819
APR	1,048	660	673
MAY	1,358	733	719
JUNE	1,240	751	725

Data Notes: Figures are based on operational data available at the time of this report. Data in subsequent issues may not agree.

CHART 3 – Total Prison Population
July 1, 2012 to July 7, 2012

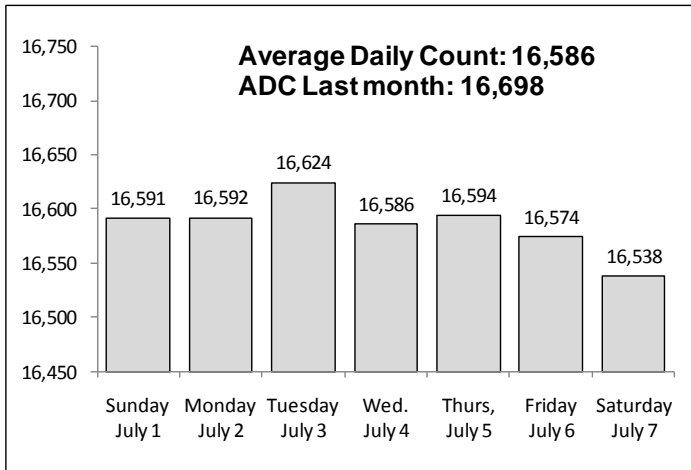


CHART 6 – Monthly DOC Admissions by Type
May 2011 through June 2012

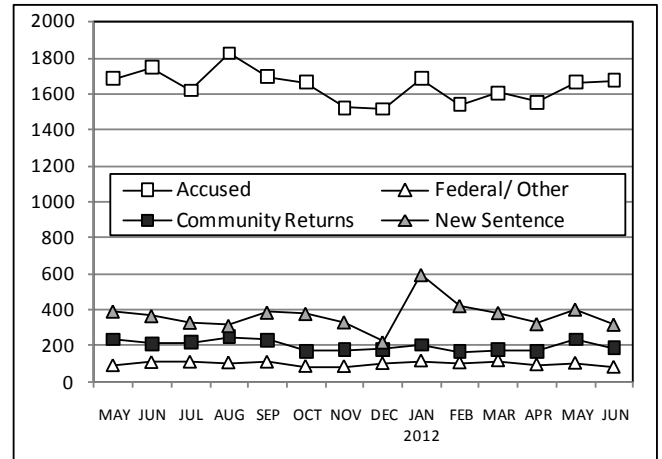


CHART 4 – Prison Population, first-of-month
January 1 through December 1

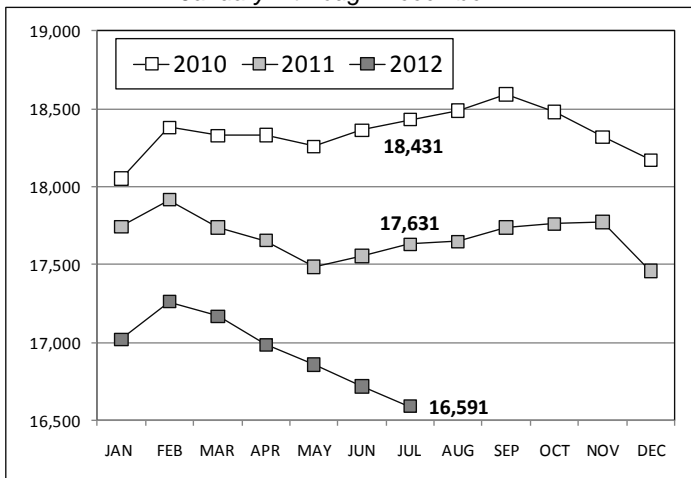


CHART 7 – Readmissions from Community Release
June 2012

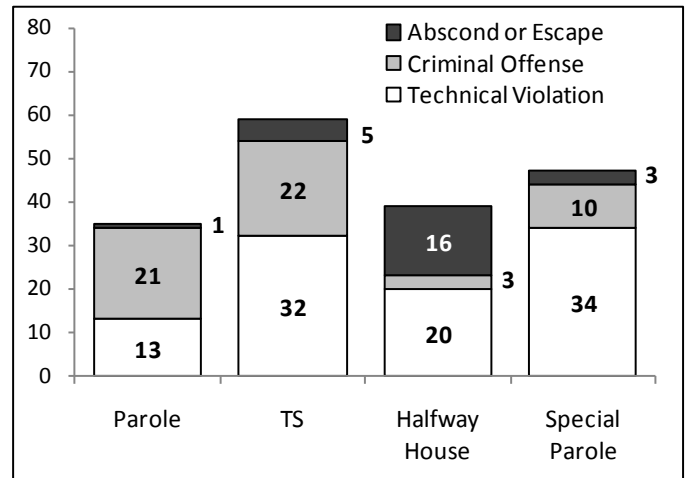


CHART 5 – Monthly Statewide Criminal Arrests
2011 versus 2012

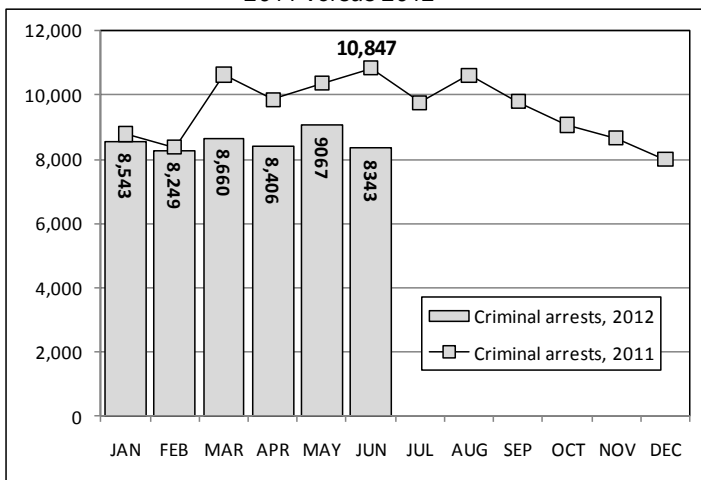
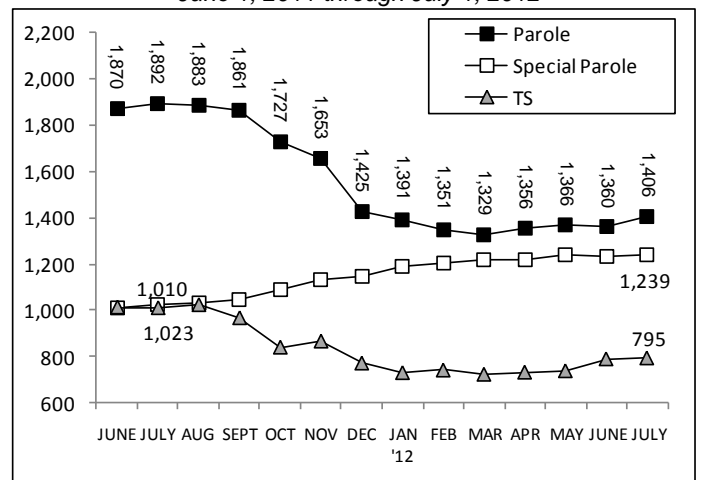


CHART 8 – Parole, TS and Special Parole, supervised cases
June 1, 2011 through July 1, 2012



Note: Data for all charts, with the exception of Chart 5, was supplied by CT DOC. Data for Chart 5 is based on new case starts in the state Offender-Based Tracking System (OBTS).