

# OPM - Criminal Justice Policy & Planning Division Monthly Indicators Report



Published by the Connecticut Statistical Analysis Center at the Connecticut Office of Policy & Management

## Highlights

- On April 1, 16,986 offenders were incarcerated in state prison facilities. A year earlier, 17,655 were incarcerated (see chart 4). The sentenced prison population was 12,837. The last time the sentenced inmate count was lower was December 1998.
- During March, 897 offenders discharged their prison sentences early due to the Risk Reduction Earned Credit (RREC) program. Most offenders, 525, were discharged directly from prison. The remainder was already in the community with DOC supervision. The average offender who was released from a prison facility earned about 45 days of credit. Offenders discharged from community supervision averaged 91 days of credit.
- The home confinement program for DUI and drug offenders began to ramp up this month. In February, only 2 offenders were released through the program. Last month, that figure jumped to 26.
- According to DOC data, the population of very young prisoners has declined significantly over the last 2 years. On April 1, 2009, 349 youths under the age of 18 were incarcerated in DOC facilities. This April 1<sup>st</sup>, the figure was 135 (see chart 5).

*Due to staffing changes at other agencies, OPM was unable to publish the data for statewide criminal arrests or Public Defender caseloads in time for this issue. We will publish this information when it becomes available.*

## Prison Population Forecast

The DOC continues to shed prisoners at a faster rate than OPM had projected in February. At that time OPM had expected the volume of offenders released early through the Risk Reduction Earned Credit (RREC) program to slow considerably during March. In fact, the number of offenders discharging from prison due to awarded RREC remained relatively constant at about 500 per month.

Parole and transitional supervision caseload totals are considerably lower than they were a year ago (see chart 8). It was assumed that because RREC was first applied to offenders in the community, parole and TS caseloads would be reduced in order to clear supervision capacity in advance of an expected increase in prison releases. A preliminary review of the pool of parole eligible offenders suggests that caseloads may remain at low levels for some time.

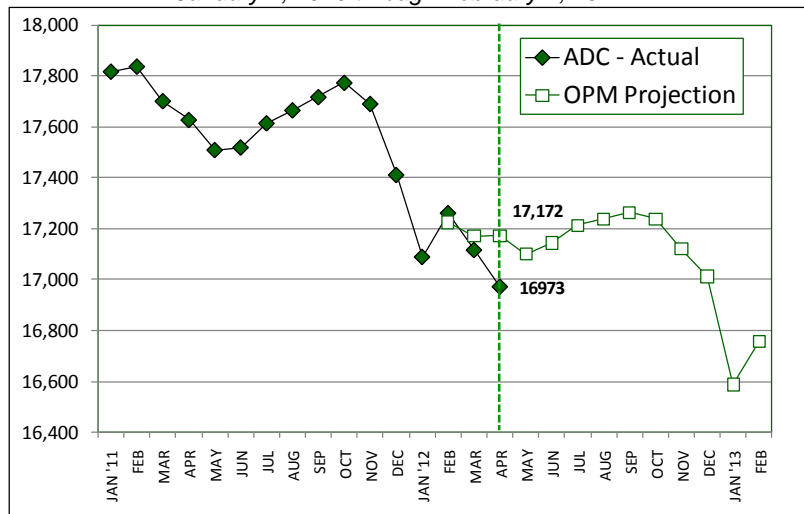
Since RREC was implemented in September, the overall pool of parole eligible prisoners has dropped by 5.6% (see table 5). During the same period, the total number of sentenced inmates only declined by 4.0%. A smaller pool of parole-eligible offenders is expected to translate into fewer parole releases in future months.

TABLE 1 –Prison Population Forecast

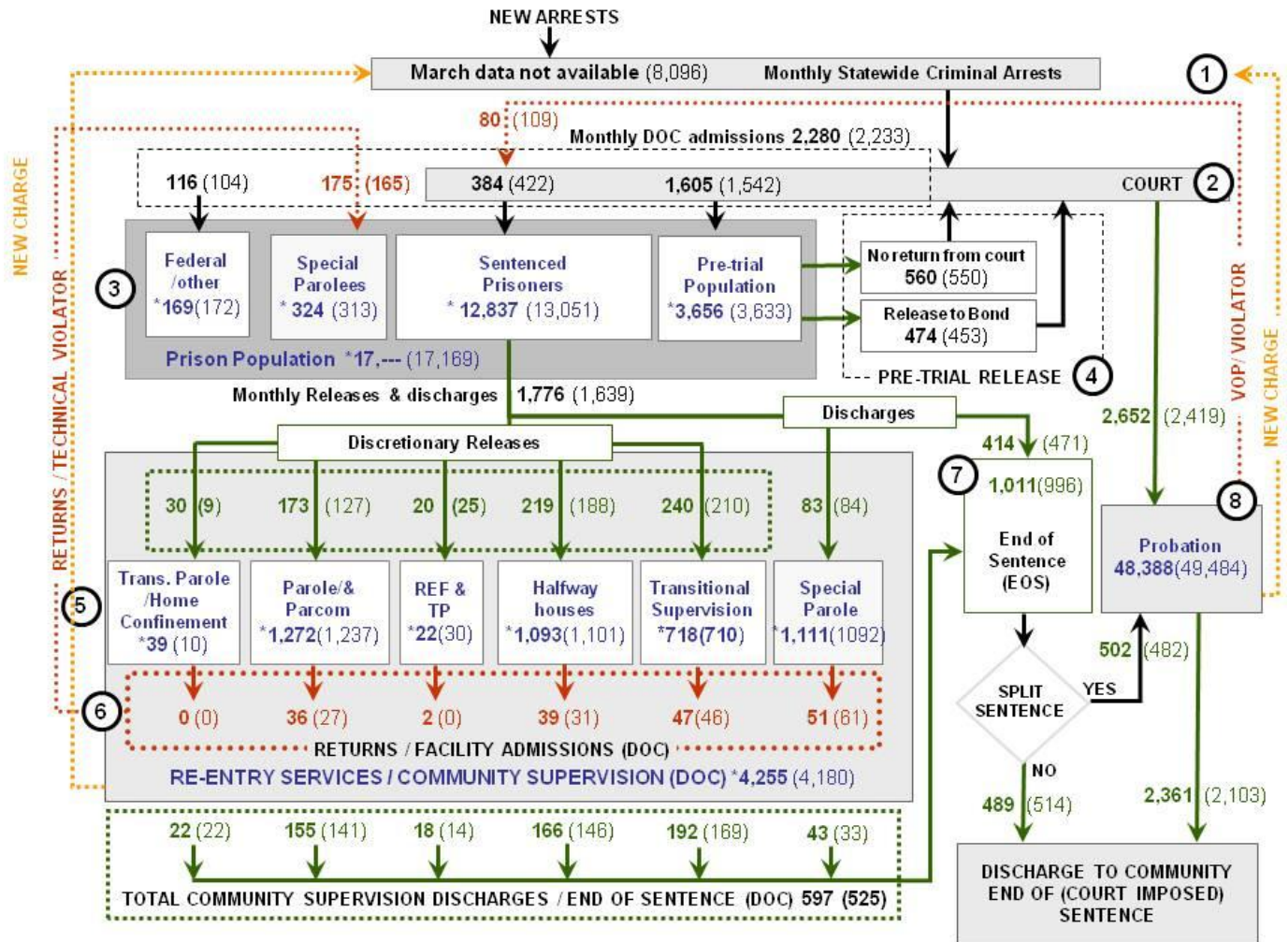
	Actual (*Avg Daily Count)	OPM 2011 Forecast	Diff. %
FEB '12	17,224*	17,224	
MAR	17,117*	17,171	-0.3%
APR	16,973*	17,172	-1.2%
MAY	-	17,100	
JUN	-	17,143	
JUL	-	17,213	
AUG	-	17,238	
SEP	-	17,263	
OCT	-	17,238	
NOV	-	17,121	
DEC	-	17,013	
JAN '13	-	16,587	
FEB	-	16,756	

\* Average Daily Count, first week of month

CHART 1 – Average Daily Inmate Count for the First Week of the Month  
January 1, 2010 through February 1, 2012



## CHART 2 – Connecticut Criminal Justice System – Monthly Overview



Asterisks (\*) indicate the population count on April 1, 2012.  
 Figures for the previous months are enclosed by parenthesis.

Sources: Arrests-Judicial/Court Operations; Court-Judicial/CSSD; Facility/Community Supervision-DOC

Unlike states that have county governments, the majority of agencies within Connecticut's criminal justice system are State agencies. The one exception is law enforcement, where there are over 90 local police departments and the Connecticut State Police.

- 1) Arrest:** An individual enters into the criminal justice system at the time of arrest.
- 2) Court:** At arraignment, judges review the charges filed against the accused and set a bail amount. Individuals who cannot meet bail conditions are incarcerated in DOC facilities to await trial. If the defendant is convicted, they may be sentenced to a range of sanctions including a fine, probation, or a term of incarceration.
- 3) DOC Facilities:** Total facility population at DOC contains the unsentenced population, which is awaiting trial, the sentenced population, inmates who have returned from special parole, and offenders charged in federal cases or non-state cases.
- 4) Pre-Trial Release:** Some defendants who are incarcerated pending the disposition of their cases may be eligible for a bond reduction or placement into pre-trial diversionary programs or treatment programs. These programs feature close coordination and cooperation between DOC, CSSD and the Department of Mental Health and Addiction Services (DMHAS).
- 5) Re-Entry Services:** Depending on several factors, an inmate may be eligible to complete a portion of his/her prison sentence under supervision of the DOC's Parole and Community Services Unit. Non-violent Inmates with sentences shorter than two years are eligible for Transitional Supervision after serving 50% of their sentences. Inmates serving sentences longer than two years may be eligible for parole.
- 6) Returns:** Offenders who violate the conditions of their community release may be returned to prison to complete the remainder of their sentences.
- 7) End of Sentence (EOS):** At the end of their sentences some offenders are required to complete a period of post-release supervision. Split-sentence offenders are supervised by the Judicial Branch's Office of Adult Probation. Offenders sentenced to special parole remain under DOC supervision.
- 8) Violation of Probation:** If an individual violates the terms of their probation, an arrest warrant must be issued, and the violator's case is returned to court.

TABLE 2 – DOC Population Counts, First of the Month

	2011			2012			% Change	
	Feb. 1st	Mar 1st.	Apr 1st.	Apr 1st.	Monthly	Annual		
<b>DOC Facility</b>								
Federal/Other	166	172	169	151	-1.7%	11.9%		
Sentenced	13,130	13,051	12,837	13,731	-1.6%	-6.5%		
Special Parole	307	313	324	316	3.5%	2.5%		
Pre-trial	3,659	3,633	3,656	3,457	0.6%	5.8%		
<b>Total</b>	<b>17,262</b>	<b>17,169</b>	<b>16,986</b>	<b>17,655</b>	<b>-1.1%</b>	<b>-3.8%</b>		
<b>DOC Community</b>								
Transfer Parole	12	8	8	22	0.0%	-		
Parole/ Parcom Total	1,289	1,237	1,272	1,755	2.8%	-27.5%		
Parole	1,116	1,069	1,098	1,584	2.7%	-30.7%		
Parcom @ CT	173	168	174	171	3.6%	1.8%		
Furlough	12	17	13	3	-23.5%	333.3%		
Trans Placement	6	13	9	17	-30.8%	-47.1%		
Home confinement/DUI	0	2	31	0	-	-		
Halfway House Total	1,091	1,101	1,093	1,071	-0.7%	2.1%		
Comm Release	855	868	883	875	1.7%	0.9%		
TS	16	15	16	15	6.7%	6.7%		
Parole	102	92	84	80	-8.7%	5.0%		
Transfer Parole	0	0	1	1	-	0.0%		
Special Parole	118	124	109	100	-12.1%	9.0%		
TS Total	716	710	718	979	1.1%	-26.7%		
Special Parole	1,069	1,092	1,111	904	1.7%	22.9%		
<b>Total</b>	<b>4,195</b>	<b>4,180</b>	<b>4,255</b>	<b>4,751</b>	<b>1.8%</b>	<b>-10.4%</b>		

TABLE 3 – DOC Admissions and Releases, Monthly Totals\*

	2011			2012			% Change	
	Jan.	Feb	Mar.	Mar.	Monthly	Annual		
<b>Admissions</b>								
Federal/Other	115	104	116	117	11.5%	-0.9%		
Returns	204	165	175	202	6.1%	-13.4%		
Transfer Parole	0	0	0	2	-	-		
Parole	49	27	36	55	33.3%	-34.5%		
Trans Plac/Furlough	1	0	2	1	-	-		
HWH	54	31	39	41	25.8%	-4.9%		
TS	41	46	47	62	2.2%	-24.2%		
Special Parole	59	61	51	41	-16.4%	24.4%		
New Sentence	592	422	384	464	-9.0%	-17.2%		
VOP	168	109	80	107	-26.6%	-25.2%		
Pre-trial	1,686	1,542	1,605	1687	4.1%	-4.9%		
<b>Total</b>	<b>2,597</b>	<b>2,233</b>	<b>2,280</b>	<b>2,470</b>	<b>2.1%</b>	<b>-7.7%</b>		
<b>Releases</b>								
Transfer Parole	4	7	4	21	-42.9%	-81.0%		
Parole	163	127	173	200	36.2%	-13.5%		
Trans Plac/Furlough	14	25	20	10	-20.0%	100.0%		
Home Confinement DUI	0	2	26	0	-	-		
HWH	198	188	219	208	16.5%	5.3%		
TS	233	210	240	318	14.3%	-24.5%		
Special Parole	92	84	83	62	-1.2%	33.9%		
End of Sentence	919	996	1,011	957	1.5%	5.6%		
<b>Total</b>	<b>1,623</b>	<b>1,639</b>	<b>1,776</b>	<b>1,776</b>	<b>8.4%</b>	<b>0.0%</b>		
<b>Pre-trial Releases*</b>								
Did not return from Court	589	550	560	631	1.8%	-11.3%		
Release to Bond	433	453	474	553	4.6%	-14.3%		

\*Monthly totals are measured by occurrence, not by individual.

**Board of Pardons and Parole**

Parole eligibility among prisoners with sentences greater than 24 months:

Eligible: 8,726, Non-eligible: 826

TABLE 4A – Paroles Granted, New cases

	Hearings	Granted	Rate
JAN '12	124	92	74%
FEB	207	177	86%
MAR	183	149	81%

TABLE 4B – Other Parole Hearings

	Revocations		Rescissions	
	Reparoled	Denied	Reparoled	Denied
JAN '12	36	20	10	11
FEB	31	31	12	13
MAR	45	31	18	12

**The parole eligibility pool**

The parole-eligible prison population has declined by 7% since the Risk Reduction Earned Credit (RREC) program was implemented.

TABLE 5 – Parole-eligibility pool

	Sentenced prisoners	Parole-eligible
OCT	13,599	9,244
NOV	13,599	9,185
DEC	13,310	9,059
JAN '12	12,955	8,925
FEB	13,130	8,877
MAR	13,051	8,726
APR	12,837	8,598

**CSSD – Adult Probation**

Court Support Services Division: Probation clients in March 2012: 48,388. A year ago, in March 2011, the caseload was 51,142.

TABLE 6 – Monthly CSSD Direct Sentenced & Probationer Community Placements

	Community Based	Out-patient	Inpatient/Resident	Total
DEC '11	930	1,279	26	2,235
JAN '12	900	1,318	28	2,246
FEB	787	1,223	22*	2,032

\*Inpatient residential figure for February reflects a counting change by CSSD.

**Pre-trial Diversion and Supervision**

TABLE 7 –Pre-trial and split sentence starts

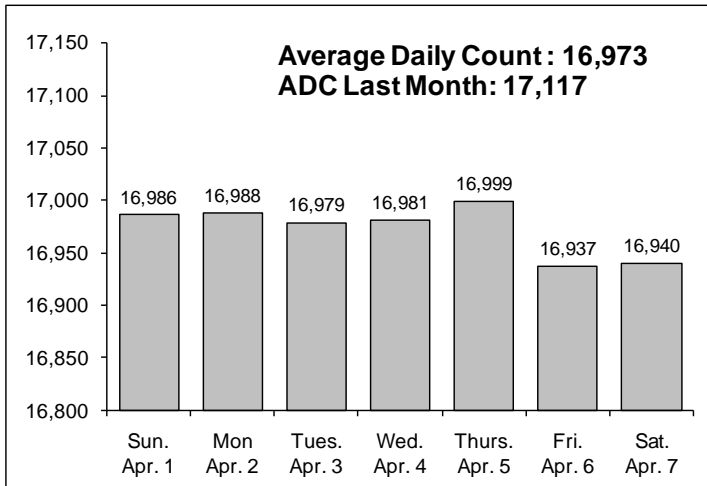
	Pre-trial Bail Case Starts	Client Supv. Starts	Split Sentence Starts
JAN '12	2,500	2,731	552
FEB	2,267	2,419	482
MAR	2,687	2,652	502

TABLE 8 – The Jail Re-interview Program

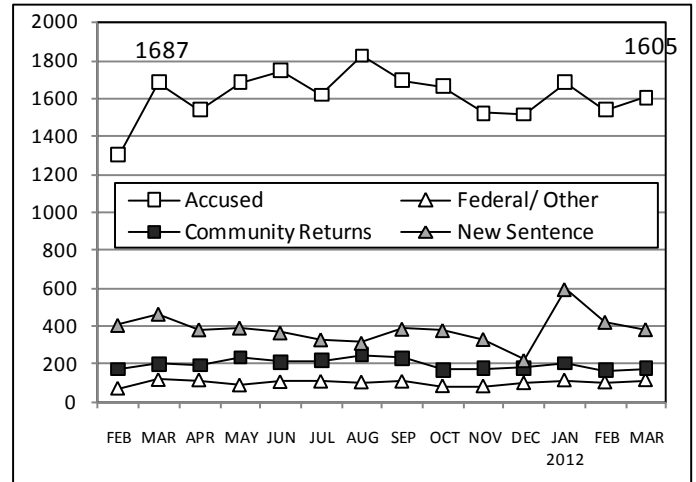
	Offenders interviewed	Offenders released	Releases 1 year prior
JAN '12	1,256	670	542
FEB	1,061	689	589
MAR	1,258	702	819

Data Notes: Figures are based on operational data available at the time of this report. Data in subsequent issues may not agree.

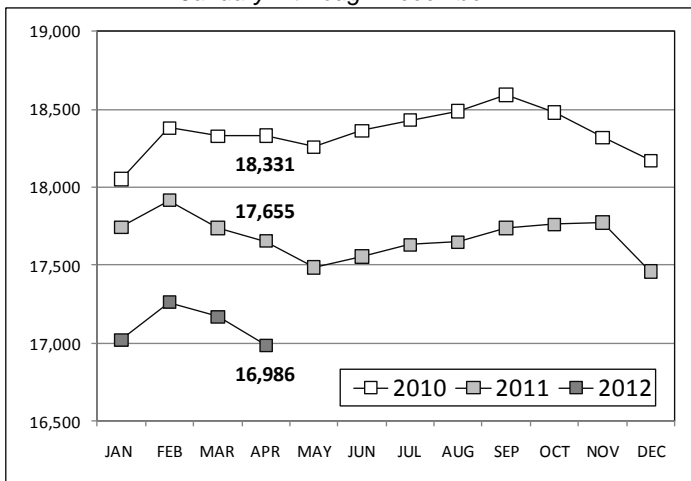
**CHART 3 – Total Facility Population**  
 April 1, 2012 to April 7, 2012



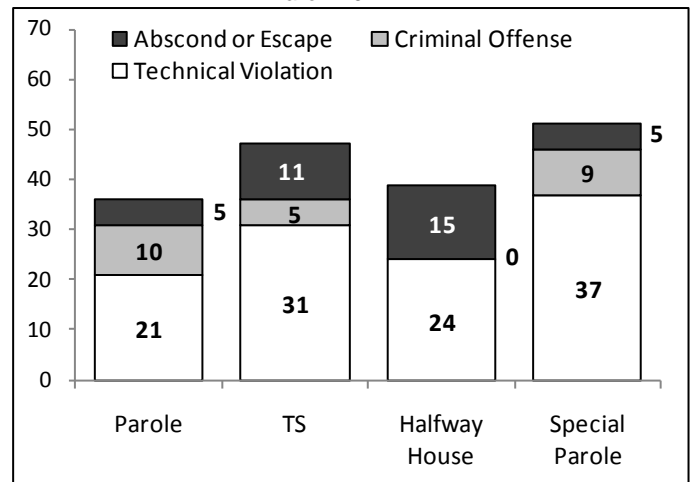
**CHART 6 – Monthly DOC Admissions by Type**  
 Feb. 2011 through Mar. 2012



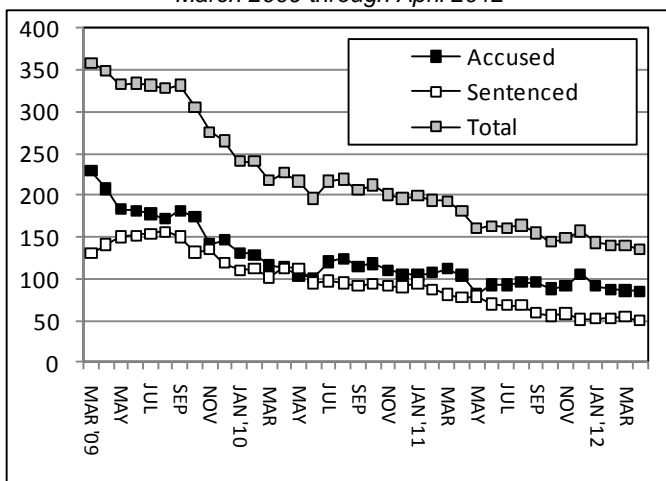
**CHART 4 – Prison Population, first-of-month**  
 January 1 through December 1



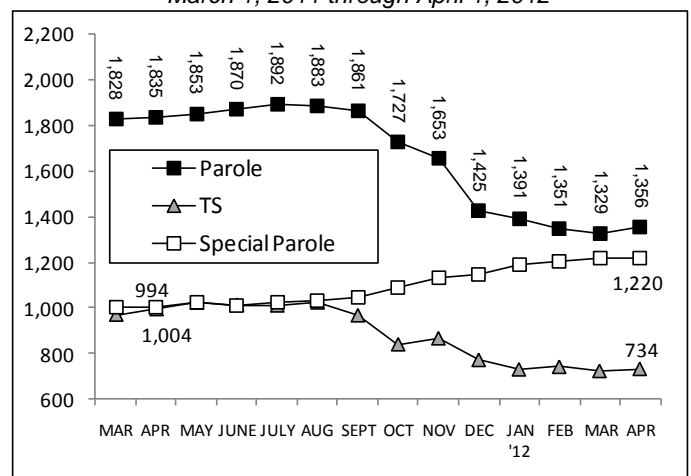
**CHART 7 – Readmissions from Community Release**  
 March 2012



**CHART 5 – The under-18 prison population**  
 March 2009 through April 2012



**CHART 8 – Parole, TS and Special Parole, supervised cases**  
 March 1, 2011 through April 1, 2012



Note: Data for all charts, with the exception of Chart 5, was supplied by CT DOC. Data for Chart 5 was provided by Court Operations. Data in Chart 8 includes all offenders under parole jurisdiction.