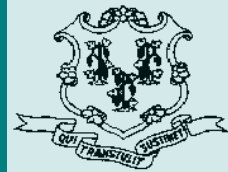


# Criminal Justice Policy & Planning Division Monthly Indicators Report



RESEARCH, ANALYSIS & EVALUATION — WWW.CT.GOV/OPM/CriminalJustice/Research

## Highlights

- The prison population increased, between May 1<sup>st</sup> and June 1<sup>st</sup>, from 18,259 to 18,364, a rise of 105 inmates (See Chart 2). This growth occurred despite 156 fewer prison admittances during May than in April.
- Statewide criminal arrests fell by almost 5%, from 9,566 to 9,124, between April and May. This drop contributed to a 6.4% drop in the number of accused persons admitted to prison during May.
- The modest decrease in the number of offenders who were released or discharged during May was probably the largest single contributor to the growth of the prison population we witnessed during the last month. Releases declined in every category except the transfer parole count (see Table 3).
- Between the start of November 2009, when re-entry furloughs were reintroduced, and the end of May 2010, roughly 330 offenders have been released through the furlough process (See Chart 5). On June 1, 2010, 18 offenders were on re-entry furloughs.
- The Board of Pardons and Parole held 319 full-panels hearings in May. The parole grant rate was 76%. This is the first time the number of hearings exceeded 300 since June 2009.

*The CJ PAC Research Workgroup delivered a presentation to CJ PAC on June 10, 2010. Streaming video of the presentation is available on line at the CTN website.*

## Prison Population Forecast

The state's prison population increased slightly in May. The average daily prisoner count during the first week of June was 18,352, an increase of 87 inmates over the May figure.

At this point, May's modest increase in the prison population is not a cause for immediate concern. The prison population typically rises as the weather warms. In some years, this population increase appears early in the season; in other years the prison population does not grow until late summer. This seasonal fluctuation is generally impacted by an increase in the volume of criminal arrests that drives an increase the number of new prison admittances. To date, OPM had not observed an increase in arrest totals.

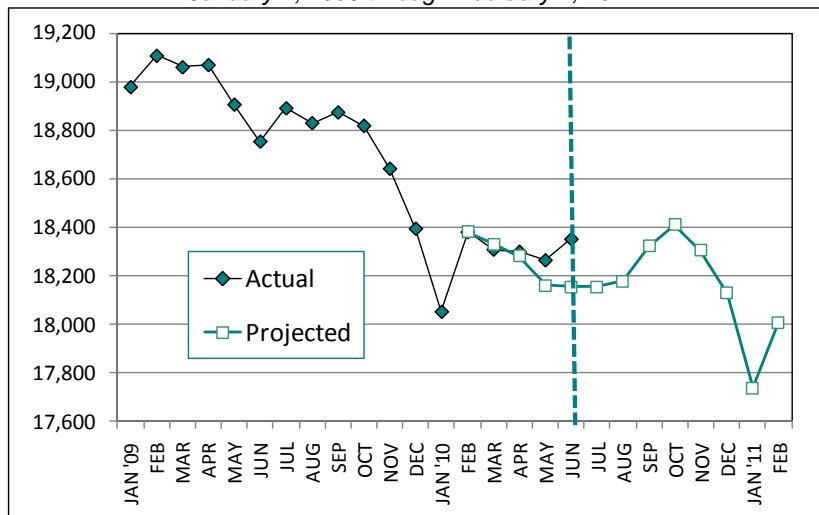
New admits were not a factor in this month's prison-population increase. In fact, monthly admits fell from 2,562 in April to 2,406 in May. Instead, the new inmate count appears to reflect a drop in the total number of offenders who were released or discharged in May.

TABLE 1 –Prison Population Forecast

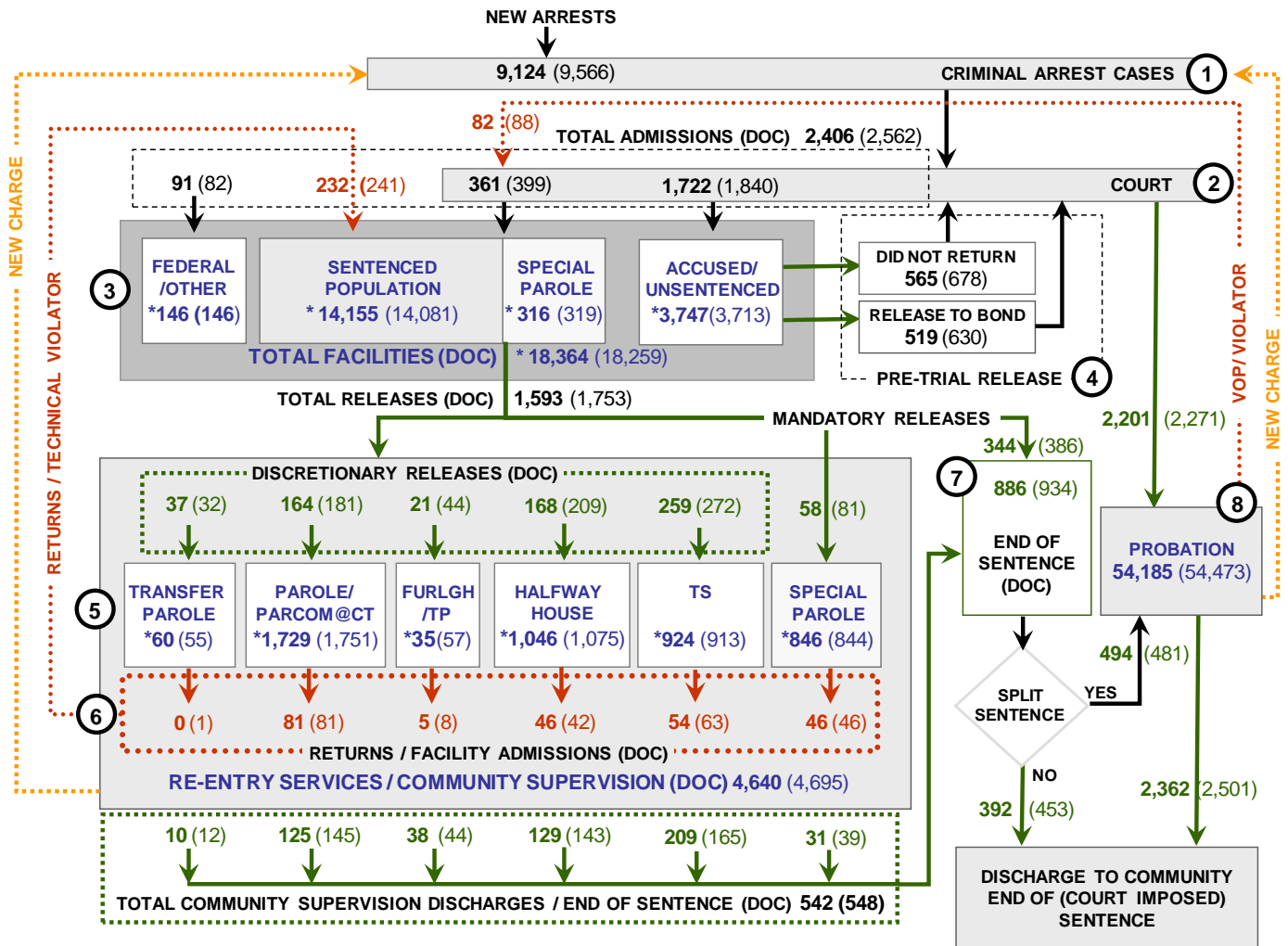
	Actual (*Avg Daily Count)	OPM 2010 Forecast
FEB '10	18,414*	-
MAR	18,309*	18,332
APR	18,300*	18,281
MAY	18,265*	18,161
JUN	18,352*	18,156
JUL	-	18,155
AUG	-	18,180
SEP	-	18,323
OCT	-	18,411
NOV	-	18,305
DEC	-	18,129
JAN '11	-	17,738
FEB	-	18,009

\* Average Daily Count, first week of month

CHART 1 – Total DOC Facility Population, Actual and Projected  
January 1, 2009 through February 1, 2011



## CHART 2 – Connecticut Criminal Justice System – Monthly Overview



Asterisks (\*) indicate the single-day population count on June 1, 2010.  
 Numbers enclosed by parentheses contain the previous month's figure.  
 Data shown for New Split Sentence Probationers is approximate due to data reconciliation issues.  
 Sources: Arrest-Judicial/Court Operations; Court-Judicial/CSSD; Facility/Community Supervision-DOC

Unlike states that have county governments, the majority of agencies within Connecticut's criminal justice system are State agencies. The one exception is law enforcement, where there are over 90 local police departments and the Connecticut State Police.

- 1) Arrest:** An individual enters into the criminal justice system at the time of arrest.
- 2) Court:** At arraignment, judges review the charges filed against the accused and set a bail amount. Individuals who cannot meet bail conditions are incarcerated in DOC facilities to await trial. If the defendant is convicted, they may be sentenced to a range of sanctions including a fine, probation, or a term of incarceration.
- 3) DOC Facilities:** Total facility population at DOC contains the unsentenced population, which is awaiting trial, the sentenced population, inmates who have returned from special parole, and offenders charged in federal cases or non-state cases.
- 4) Pre-Trial Release:** Some defendants who are incarcerated pending the disposition of their cases may be eligible for a bond reduction or placement into pre-trial diversionary programs or treatment programs. These programs feature close coordination and cooperation between DOC, CSSD and the Department of Mental Health and Addiction Services (DMHAS).
- 5) Re-Entry Services:** Depending on several factors, an inmate may be eligible to complete a portion of his/her prison sentence under supervision of the DOC's Parole and Community Services Unit. Non-violent Inmates with sentences shorter than two years are eligible for Transitional Supervision after serving 50% of their sentences. Inmates serving sentences longer than two years may be eligible for parole.
- 6) Returns:** Offenders who violate the conditions of their community release may be returned to prison to complete the remainder of their sentences.
- 7) End of Sentence (EOS):** At the end of their sentences some offenders are required to complete a period of post-release supervision. Split-sentence offenders are supervised by the Judicial Branch's Office of Adult Probation. Offenders sentenced to special parole remain under DOC supervision.
- 8) Violation of Probation:** If an individual violates the terms of their probation, an arrest warrant must be issued, and the violator's case is returned to court.

TABLE 2 –DOC Population Counts, First of the Month

	2010	2010	2010	2009	% Change	
	Apr. 1st	May 1st	Jun. 1st	Jun. 1st	Monthly	Annual
<b>DOC Facility</b>						
Federal/Other	142	146	146	162	0.0%	-9.9%
Sentenced	14,109	14,081	14,155	14,640	0.5%	-3.3%
Special Parole	324	319	316	264	-0.9%	19.7%
Accused/Unsentenced	3,756	3,713	3,747	3,688	0.9%	1.6%
<b>Total</b>	<b>18,331</b>	<b>18,259</b>	<b>18,364</b>	<b>18,754</b>	<b>0.6%</b>	<b>-2.1%</b>
<b>DOC Community</b>						
Transfer Parole	61	55	60	80	8.3%	-25.0%
Parole/ Parcom Total	1,780	1,751	1,729	1,549	-1.3%	11.6%
Parole	1,628	1,596	1,577	1,384	-1.2%	13.9%
Parcom @ CT	152	155	152	165	-2.0%	-7.9%
Furlgh/Trans Place Total	65	57	35	35	-62.9%	0.0%
Furlough	43	38	18	0	-111.1%	-
Trans Placement	22	19	17	35	-11.8%	-51.4%
Halfway House Total	1,091	1,075	1,046	1,175	-2.8%	-11.0%
Comm Release	905	890	873	912	-1.9%	-4.3%
TS	21	16	15	136	-6.7%	-89.0%
Parole	98	99	91	70	-8.8%	30.0%
Transfer Parole	0	1	0	0	-	-
Special Parole	67	69	67	56	-3.0%	19.6%
TS Total	863	913	924	977	1.2%	-5.4%
Special Parole	831	844	846	832	0.2%	1.7%
<b>Total</b>	<b>4,691</b>	<b>4,695</b>	<b>4,640</b>	<b>4,648</b>	<b>-1.2%</b>	<b>-0.2%</b>

TABLE 3 – DOC Admissions and Releases, Monthly Totals

	2010	2010	2010	2009	% Change	
	Mar.	Apr.	May	May	Monthly	Annual
<b>Admissions</b>						
Federal/Other	112	82	91	87	11.0%	4.6%
Returns	232	241	232	228	-3.7%	1.8%
Transfer Parole	0	1	0	4	-	-
Parole	72	81	81	63	0.0%	28.6%
Trans Plac/Furlough	4	8	5	3	-37.5%	-
HWH	35	42	46	37	9.5%	24.3%
TS	73	63	54	72	-14.3%	-25.0%
Special Parole	48	46	46	49	0.0%	-6.1%
New Sentence	420	399	361	381	-9.5%	-5.2%
VOP	97	88	82	100	-6.8%	-18.0%
Accused	1,968	1,840	1,722	1,783	-6.4%	-3.4%
<b>Total</b>	<b>2,732</b>	<b>2,562</b>	<b>2,406</b>	<b>2,479</b>	<b>-6.1%</b>	<b>-2.9%</b>
<b>Releases</b>						
Transfer Parole	38	32	37	16	15.6%	131.3%
Parole	194	181	164	171	-9.4%	-4.1%
Trans Plac/Furlough	54	44	21	9	-52.3%	133.3%
HWH	248	209	168	184	-19.6%	-8.7%
TS	229	272	259	338	-4.8%	-23.4%
Special Parole	67	81	58	78	-28.4%	-25.6%
End of Sentence	1,037	934	886	995	-5.1%	-11.0%
<b>Total</b>	<b>1,867</b>	<b>1,753</b>	<b>1,593</b>	<b>1,791</b>	<b>-9.1%</b>	<b>-11.1%</b>
<b>Pre-trial Releases*</b>						
Did not return from Court	665	678	565	612	-16.7%	-7.7%
Release to Bond	595	630	519	579	-17.6%	-10.4%

\*Measured by occurrence, not by individual.

**Parole**

**Paroles and Parole hearings**

The Board considered 319 parole cases at full panel hearings during May. In 243 cases, offenders were granted parole dates; in 76 cases, parole was denied. In addition there were 103 parole violation hearings, resulting in 72 offenders being reparaoled; 61 for revocations and 11 for rescissions.

TABLE 4A –Paroles Granted, May 2010: 243

	Hearings	Granted	Rate
MAR	271	197	73%
APR	278	221	79%
MAY	319	243	76%

Data Notes: Figures are based on the data available at the time of this report. Data in subsequent issues may not agree.

The Board is moving towards scheduling dates for parole hearing up to 18 months before an offender's eligibility date. This should allow the Board to have a greater effect on offender programming while the offender remains incarcerated. It should also provide DOC with more time to develop a successful reintegration plan for each offender. If properly implemented, this change should reduce the number of offenders that are incarcerated beyond their parole eligibility dates.

TABLE 4B –Transfer Paroles, May 2010

	Reviewed	Granted	Denied	Continued	Rate
MAR	283	72	146	65	25%
APR	281	89	138	54	32%
MAY	212	66	115	31	31%

**Probation**

**Total Court Support Services Division caseload for May 2010: 54,185**

TABLE 5 – Monthly CSSD Direct Sentenced & Probationer Community Placements

	Community Based	Out-patient	Inpatient/Resident	Total
FEB	1232	984	22	2,238
MAR	1562	1110	27	2,699
APRIL	1560	986	21	2,567

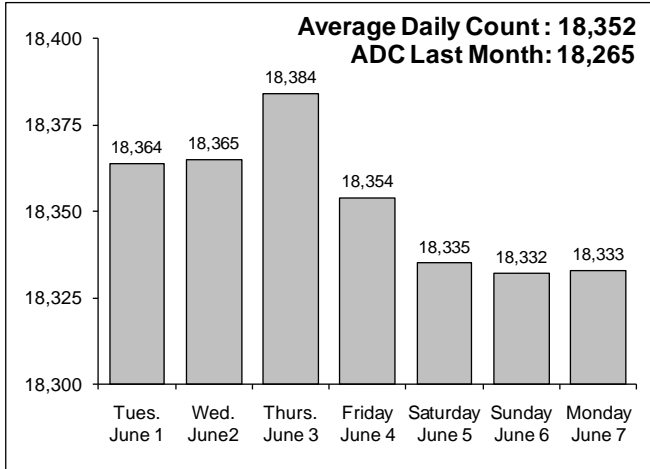
Data Notes: Figures are based on the latest data available at publication time. Figures in subsequent issues may not agree with those published here.

**Pre-trial Diversion and Supervision**

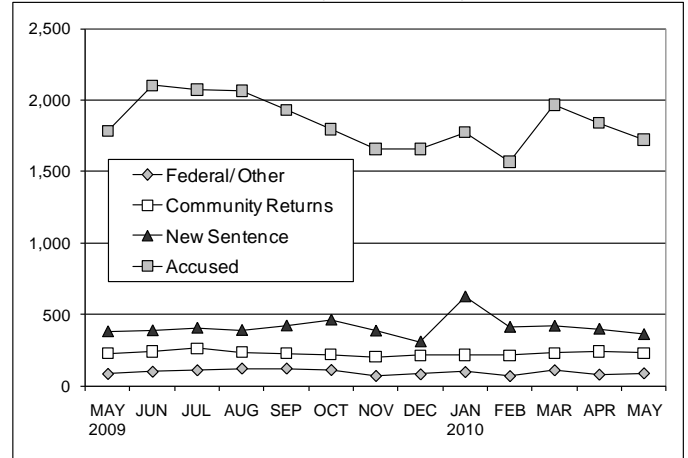
TABLE 6 – Pre-trial Diversion & Supervision

	Pre-trial Bail Case Starts	Client Supv. Starts
MAR	2,997	2,456
APR	2,854	2,271
MAY	2,652	2,201

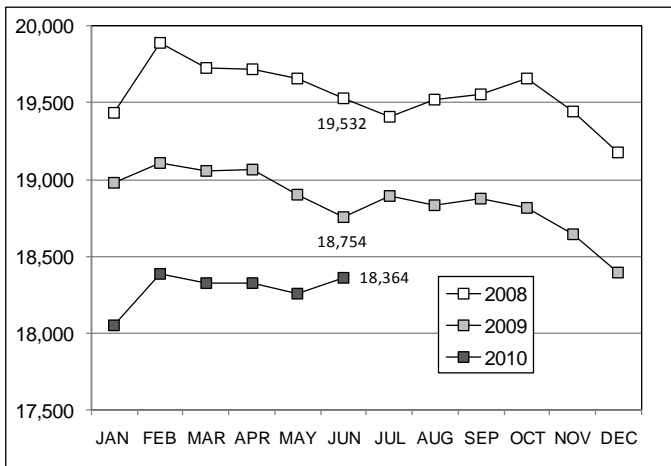
**CHART 3 – Snapshot Daily DOC Facility Population**  
June 1, 2010 to June 7, 2010



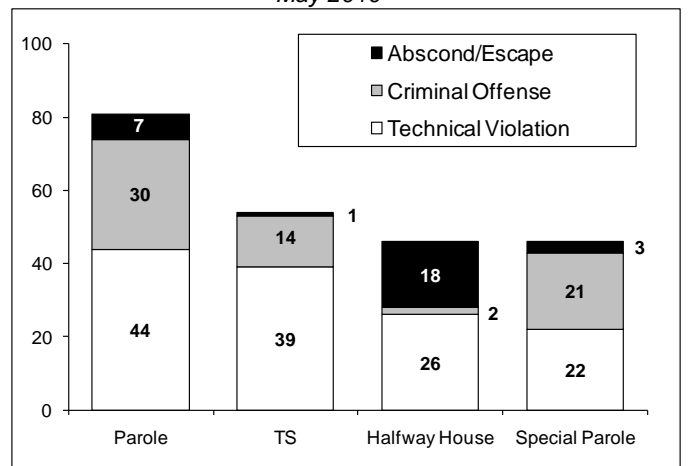
**CHART 6 – Monthly DOC Admissions by Type**  
May 2009 to May 2010



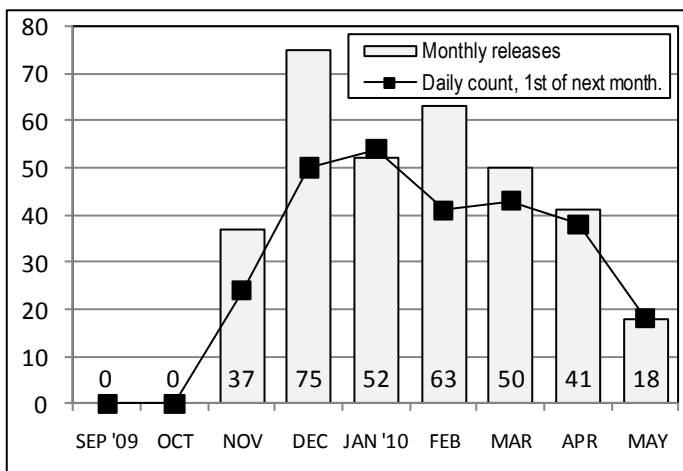
**CHART 4 –Monthly Prison Population**  
January 1 through December 1, Calendar Year



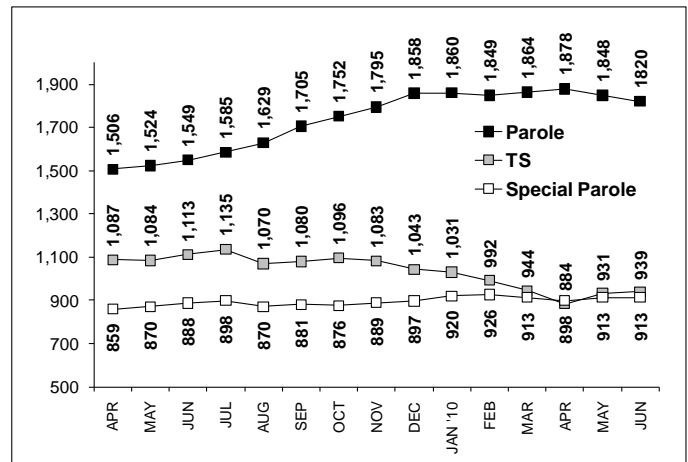
**CHART 7– Monthly Readmissions from Community Release**  
May 2010



**CHART 5 – Re-entry Furlough Counts**  
Monthly and offender count on 1<sup>st</sup> day of following month



**CHART 8 –Parole, TS and Special Parole, supervised cases**  
April 1, 2009 to June 1, 2010



Note: Data for all charts was supplied by CT DOC. Data in Chart 8 includes all offenders under parole jurisdiction