

Criminal Justice Policy & Planning Division Monthly Indicators Report



RESEARCH, ANALYSIS & EVALUATION — WWW.CT.GOV/OPM/CriminalJustice/Research

Highlights

- Since last October, the state's prison population has declined by 4.3%. On October 1, 2008, 19,657 inmates were housed in Connecticut prisons. This October 1st, 18,819 prisoners - 838 fewer - were incarcerated.
- Recently passed legislation has reinstated the Department of Correction's re-entry furlough program for a period of up-to-45 days prior to the inmate's end-of-sentence date. The reintroduction of furloughs could have an immediate impact by reducing the prison population by up to several hundred inmates.
- The parole population continues to increase every month. On October 1st, 1,752 inmates were completing their sentences in the community under the supervision of the DOC Parole Division. On October 1st, 2008, 1,400 offenders were under parole jurisdiction.
- The number of cases considered at full-panel hearings of the Board of Pardons and Parole is approximately the same as it was prior to July 2008 when the Board could assess cases through hearings or the administrative review process.

Preliminary analysis suggests that 3-year recidivism rates for sentenced offenders released in 2005 are comparable to the rates computed for sentenced offenders released on 2004. Over the next few months, CJPPD will analyze recidivism among several risk groups in the prison system. The findings will be published by OPM on February 15, 2010.

Six Month Prison Population Forecast

The average daily prison population for the first seven days of October was 18,772 (See Chart 3). This figure is lower - by 136 prisoners - than the number that was projected by OPM in its September 2009 prison population forecast. If OPM had not readjusted its projection downward in September, the actual DOC population would have been 388 prisoners (or 2.1%) lower than the February 2009 estimate.

The state's prison population has declined in ten of the last twelve months and OPM expects the prison population to continue decreasing each month through the end of the year.

In September 2009, the DOC processed 3.6% fewer prison-admits than they did during August. During the same period, they processed 10.6% more releases and discharges (See Table 3). In September, DOC posted the single largest percentage increase in offender releases and discharges for any month in 2009.

TABLE 1 -Prison Population Forecast

	2009 Actual (*Avg Daily)	September '09 forecast
MAR	19,053*	-
APR	19,040*	-
MAY	18,845*	-
JUN	18,765*	-
JUL	18,854*	-
AUG	18,839*	-
SEP	18,819*	-
OCT	18,772*	18,908
NOV	-	18,787
DEC	-	18,667
JAN '10	-	18,396
FEB	-	18,693
MAR	-	18,681

CHART 1 - Total DOC Facility Population, Actual and Projected
January 1, 2008 through March 1, 2010

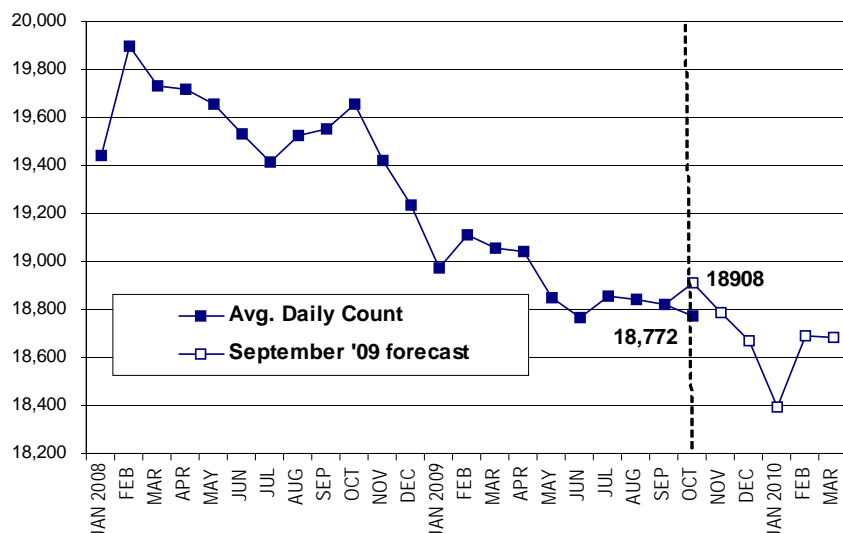
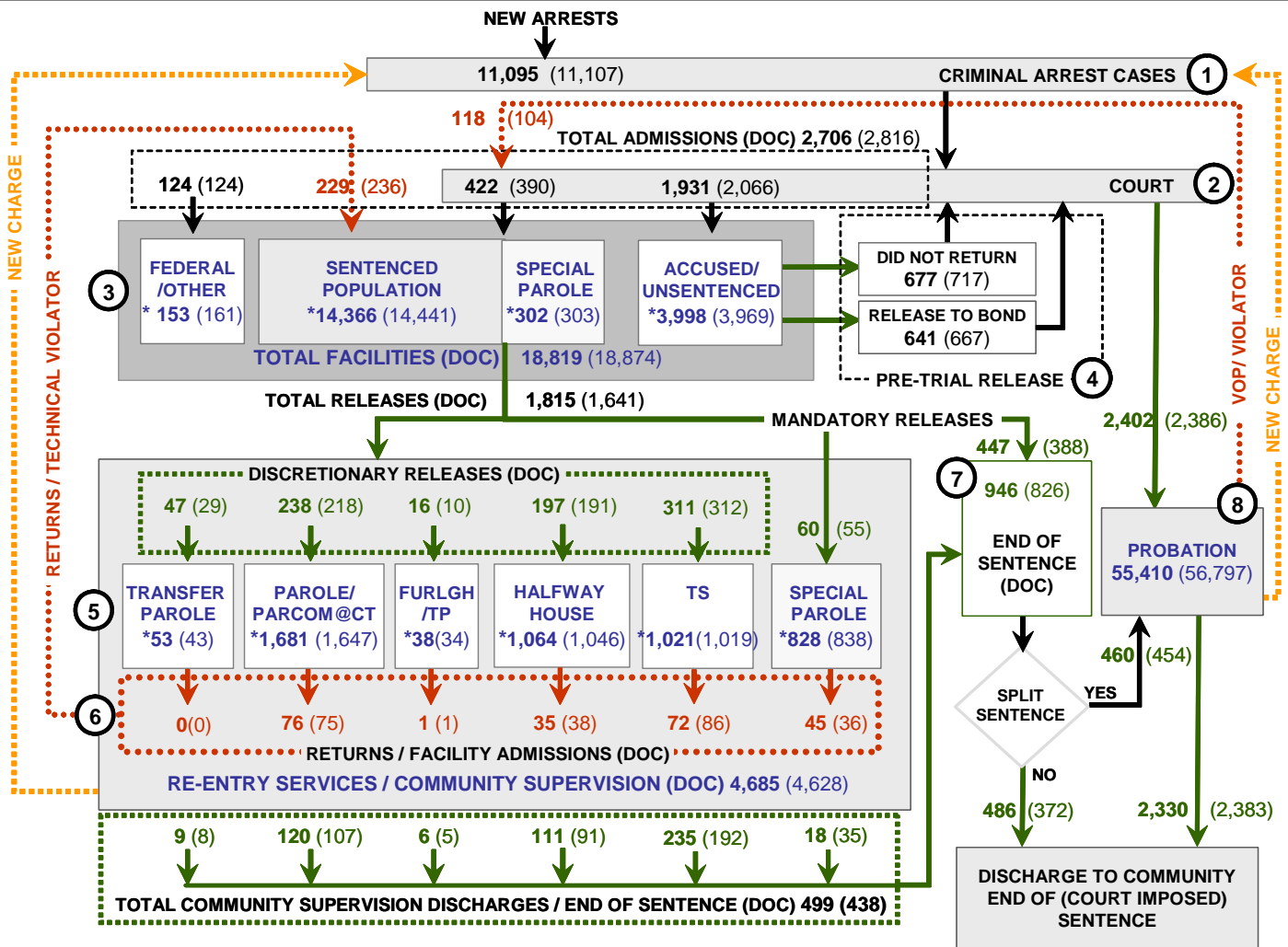


CHART 2 – Connecticut Criminal Justice System Overview



Note: The decline of almost 1,400 probation cases between August and September reflects the readjustment in the method CSSD uses to calculate its caseloads. This method produces a more accurate count of Interstate Transfer cases. Asterisks (*) indicate the single-day population count on October 1, 2009. Numbers enclosed by parentheses contain the figure for the previous month. Data shown for New Split Sentence Probationer is only approximate due to processing difficulties. Sources: Arrest-Judicial/Court Operations; Court-Judicial/CSSD; Facility/Community Supervision-DOC

Unlike states that have county governments, the majority of agencies within Connecticut's criminal justice system are State agencies. The one exception is law enforcement, where there are over 90 local police departments and the Connecticut State Police.

- 1) Arrest:** An individual enters into the criminal justice system at the time of arrest.
- 2) Court:** During arraignment, judges review the charges filed against the accused and set a bail amount. Individuals who cannot meet the conditions of bail are placed in DOC facilities to await trial. If the defendant is convicted they may be sentenced to serve a period of probation, a term of incarceration or some other sanction.
- 3) DOC Facilities:** Total facility population at DOC contains the unsentenced population, which is awaiting trial, the sentenced population, inmates on special parole, and individuals charged in federal cases or non-state cases.
- 4) Pre-Trial Release:** Some defendants who are incarcerated pending the disposition of their cases may be eligible for a bond reduction or placement into pre-trial diversionary programs or treatment programs. These programs feature close coordination and cooperation between DOC, CSSD and the Department of Mental Health and Addiction Services (DMHAS).
- 5) Re-Entry Services:** Depending on several factors, an inmate may be eligible to complete a portion of his/her prison sentences under supervision of the DOC's Parole and Community Services Unit. Non-violent Inmates with sentences shorter than two years are eligible for Transitional Supervision after serving 50% of their sentences. Inmates serving sentences longer than two years may be eligible for parole.
- 6) Returns:** Offenders who violate the conditions of their community release may be returned to prison to serve out the remainder of their sentences.
- 7) End of Sentence:** At the end of their sentences some offenders are required to complete a period of post-release supervision. Split-sentence offenders enter probation where they are monitored by CSSD personnel. Offenders sentenced to special parole remain under DOC supervision.
- 8) Violation of Probation:** If an individual violates the terms of their probation, an arrest warrant is issued and the violator is returned to court.

TABLE 2 – Snapshot of Month DOC Population Counts

	2009			2008	% Change	
	Aug. 1st	Sept. 1st	Oct. 1st	Oct. 1st	Monthly	Annual
DOC Facility						
Federal/Other	160	161	153	154	-5.0%	-0.6%
Sentenced	14,486	14,441	14,366	15,005	-0.5%	-4.3%
Special Parole	314	303	302	350	-0.3%	-13.7%
Accused/Unsentenced	3,870	3,969	3,998	4,148	0.7%	-3.6%
Total	18,830	18,874	18,819	19,657	-0.3%	-4.3%
DOC Community						
Transfer Parole	57	43	53	60	23.3%	-11.7%
Parole/ Parcom Total	1,573	1,647	1,681	1,324	2.1%	27.0%
Parole	1,414	1,480	1,519	1,166	2.6%	30.3%
Parcom @ CT	159	167	162	158	-3.0%	2.5%
Furlgh/Trans Place Total	30	35	38	0	8.6%	-
Furlough	0	0	0	0	-	-
Trans Placement	30	35	38	0	8.6%	-
Halfway House Total	1,041	1,046	1,064	1,210	1.7%	-12.1%
Comm Release	857	874	869	933	-0.6%	-6.9%
TS	83	71	75	158	5.6%	-52.5%
Parole	56	58	70	76	20.7%	-7.9%
Transfer Placement	0	0	0	0	-	-
Special Parole	45	43	49	413	14.0%	-88.1%
TS Total	987	1,019	1,021	914	0.2%	11.7%
Special Parole	825	838	828	706	-1.2%	17.3%
Total	4,513	4,628	4,685	4,214	1.2%	11.2%

TABLE 3 – Total DOC Admissions and Releases by Month

	2009			2008	% Change	
	July	August	Sept.	Sept.	Monthly	Annual
Admissions						
Federal/Other	112	124	124	95	0.0%	30.5%
Returns	263	236	229	265	-3.0%	-13.6%
Transfer Parole	2	0	0	2	-	-100.0%
Parole	71	75	76	68	1.3%	11.8%
Trans Plac/Furlough	2	1	1	1	0.0%	0.0%
HWH	40	38	35	52	-7.9%	-32.7%
TS	79	86	72	95	-16.3%	-24.2%
Special Parole	69	36	45	47	25.0%	-4.3%
New Sentence	406	390	422	438	8.2%	-3.7%
VOP	104	118	109	115	-7.6%	-5.2%
Accused	2,073	2,066	1,931	2085	-6.5%	-7.4%
Total	2,854	2,816	2,706	2,883	-3.9%	-6.1%
Releases						
Transfer Parole	19	29	47	12	62.1%	291.7%
Parole	176	218	238	132	9.2%	80.3%
Trans Plac/Furlough	9	10	16	-	60.0%	-
HWH	229	191	197	165	3.1%	19.4%
TS	282	312	311	302	-0.3%	3.0%
Special Parole	70	55	60	52	9.1%	15.4%
End of Sentence	1,055	826	946	966	14.5%	-2.1%
Total	1,840	1,641	1,815	1,629	10.6%	11.4%
Pre-trial Releases*						
Release to Bond	655	667	641	637	-3.9%	0.6%
Did not return from Court	772	717	677	768	-5.6%	-11.8%

*Measured by occurrence, not by individual.

Parole

Paroles Granted During September: 204

During September, the Board considered 240 cases at full panel hearings. In 206 cases, offenders were granted parole dates; in 34 cases, parole was denied. In addition there were 84 parole violation hearings, resulting in 77 re-paroles (57 revocation and 20 rescissions).

TABLE 4A –Paroles Granted, August 2009

	Hearings	Granted	Rate
JUL	291	246	85%
AUG	282	237	84%
SEP	240	204	85%

Data Notes: Figures are based on actual data available at the time of this report. Subsequent reports may not agree.

Parole hearings are typically held six months prior to an offender's parole eligibility date. An offender may be released to parole on their first eligibility date or a later time. As a result, the time between parole being granted and the offender being released to parole may take longer than six months.

Transfer Parole Approval Rate: 24%.

In September, 272 cases were reviewed for transfer parole: 55 cases were approved, 156 cases were denied, and 61 were continued.

TABLE 4B –Transfer Paroles, Sept. '09

	Reviewed	Granted	Denied	Continued	Rate
JULY	255	81	115	59	32%
AUG	312	74	153	85	24%
SEP	272	55	156	61	20%

Probation

Total number sentenced offenders placed on probation in September: 2,402 (See Chart 2).

TABLE 5 – Monthly CSSD Direct Sentenced & Probationer Community Placements

	Community Based	Out-patient	Inpatient/Resident	Total
JUN	1,261	855	39	2,155
JUL	1,277	789	34	2,100
AUG	1,334	935	24	2,292

Data Notes: August data for Community Placements was not available when this report was produced. Figures are based on the latest data available at publication time. Figures in subsequent issues may not agree with those published here.

Pre-trial Diversion Supervision

Offenders released to Pre-trial Diversion and/or Supervision in September: 2,567. This figure includes unsentenced offenders who were released from DOC facilities.

TABLE 6 – Pre-trial Diversion/Supervision

JULY	2,920
AUG	2,792
SEP	2,567

CHART 3 – Snapshot Daily DOC Facility Population
October 1, 2009 to October 7, 2009

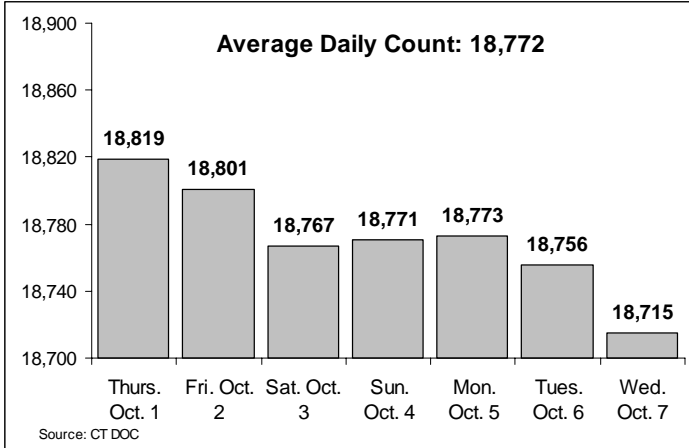


CHART 6 – Monthly DOC Admissions by Type
September 2008 to September 2009

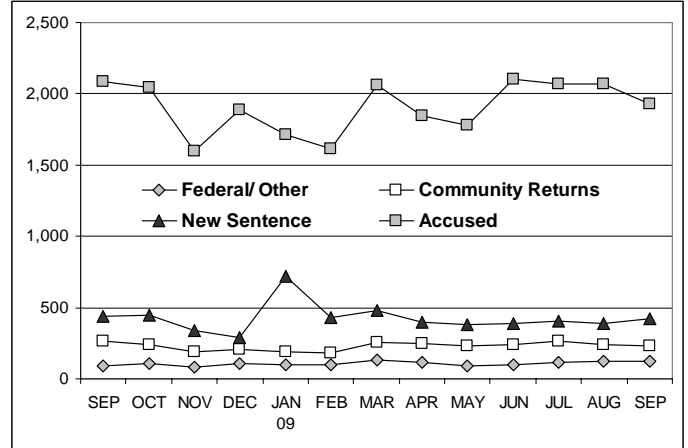


CHART 4 – Snapshot Monthly DOC Prison Population
January 1 through December 1 (Calendar Year)

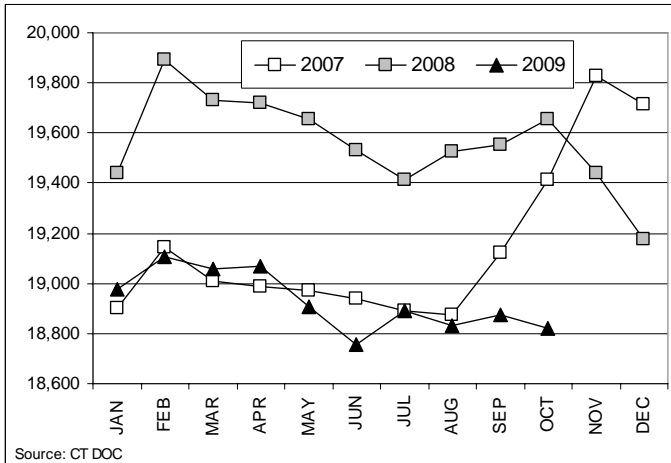


CHART 7 – Monthly Readmissions from Community Release Programs - September 2009

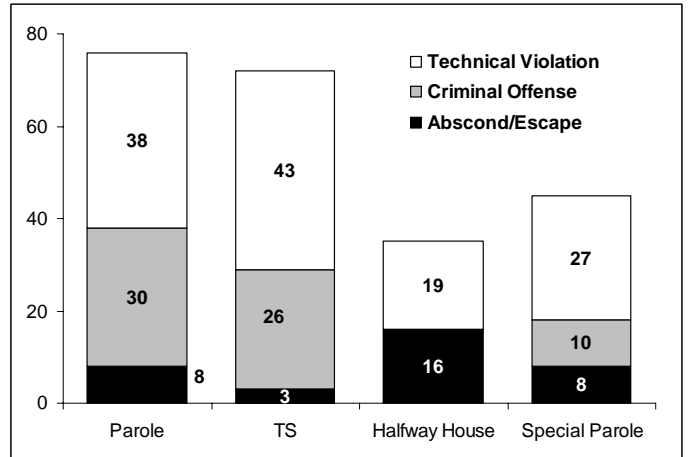


CHART 5 – Statewide Criminal Arrests during September 2009 against the 6-year monthly average
Monthly, calendar year

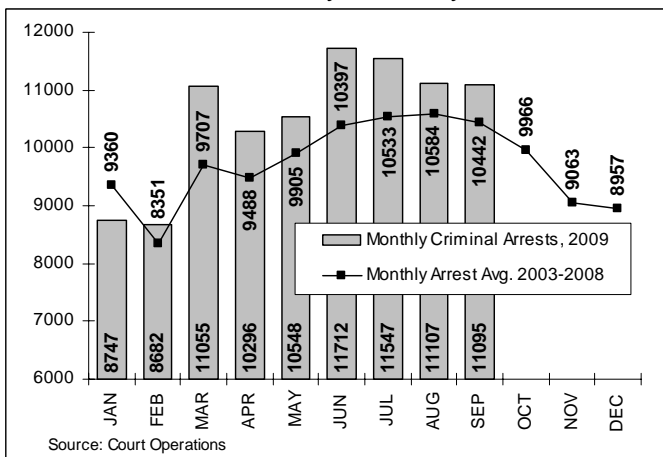


CHART 8 – Snapshot Monthly Parole, TS and Special Parole
May 1, 2008 to October 1, 2009

