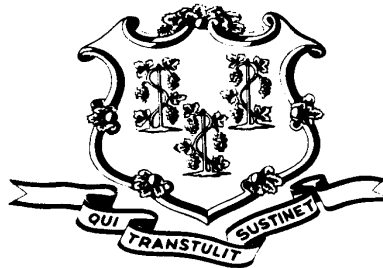


Criminal Justice

Policy & Planning Division

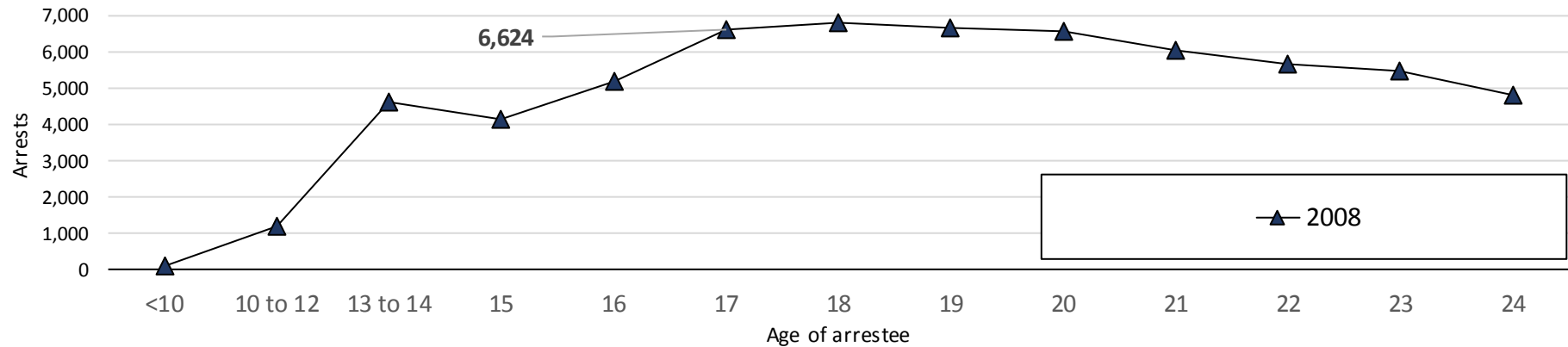


Effects of Raising the Age in the Juvenile Justice System



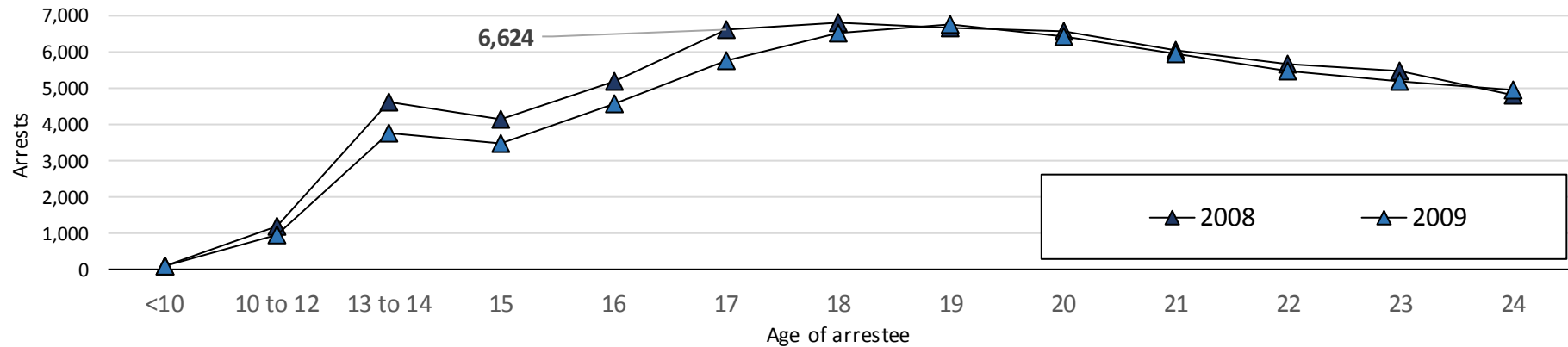
**National Conference of State Legislators
Juvenile Justice Policy Roundtable
New York City
Monday, December 7, 2015**

Arrests by age – 2008 through 2014



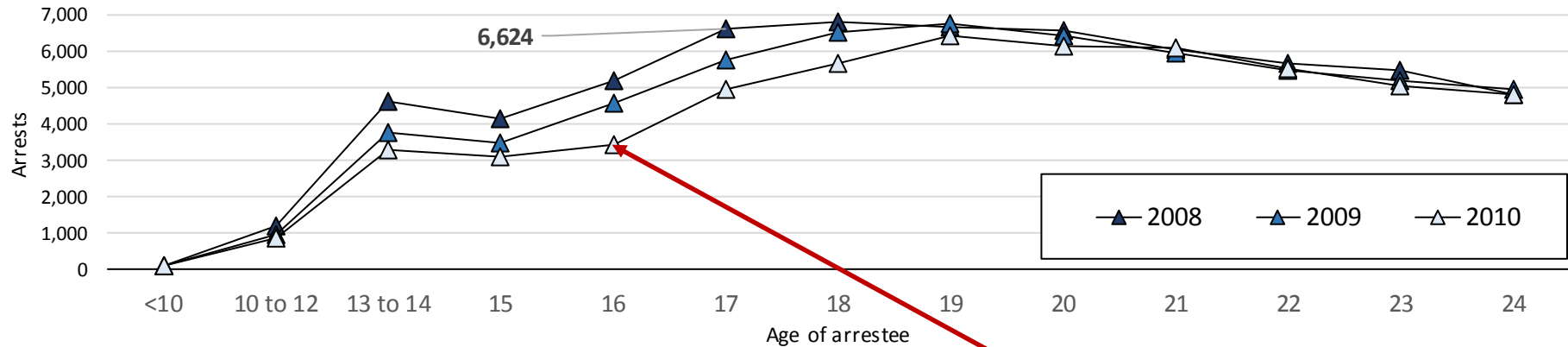
- **Statewide arrests (adult and juvenile) by age in 2008**
- **Source: Crime in Connecticut, annual reports by the CT State Police**
- **Most 15-year olds arrested in 2008 were born in 1993**

Arrests by age



- **In 2009, arrests among youth under 18 were down significantly**

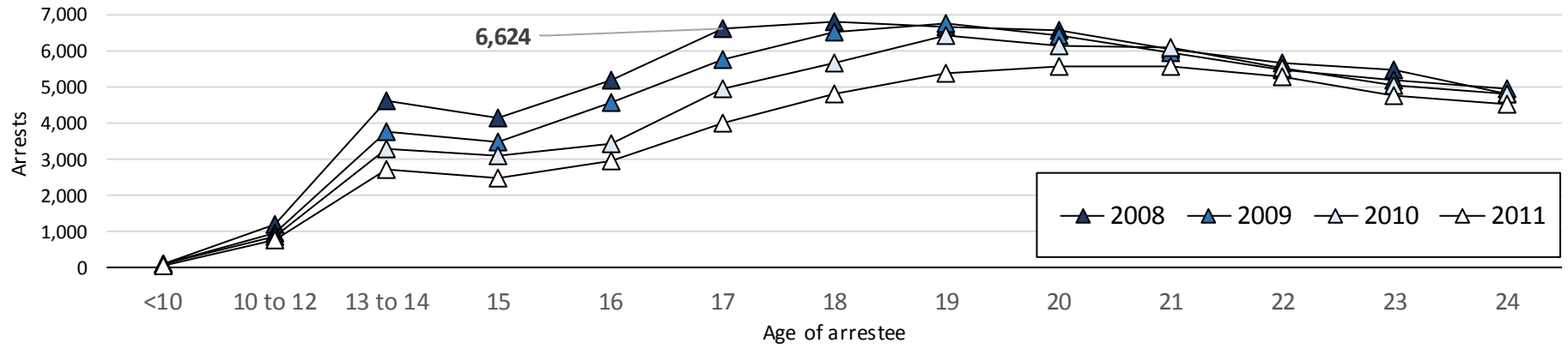
Arrests by age



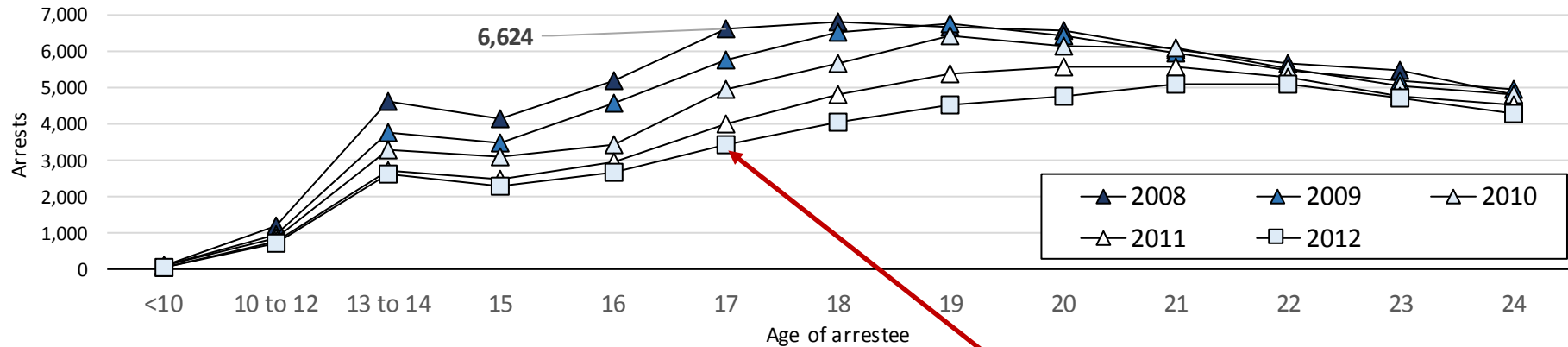
Raise the age: 16 year olds January 1, 2010

- In 2010, arrests kept declining particularly among 16-, 17- and 18-years olds.

Arrests by age



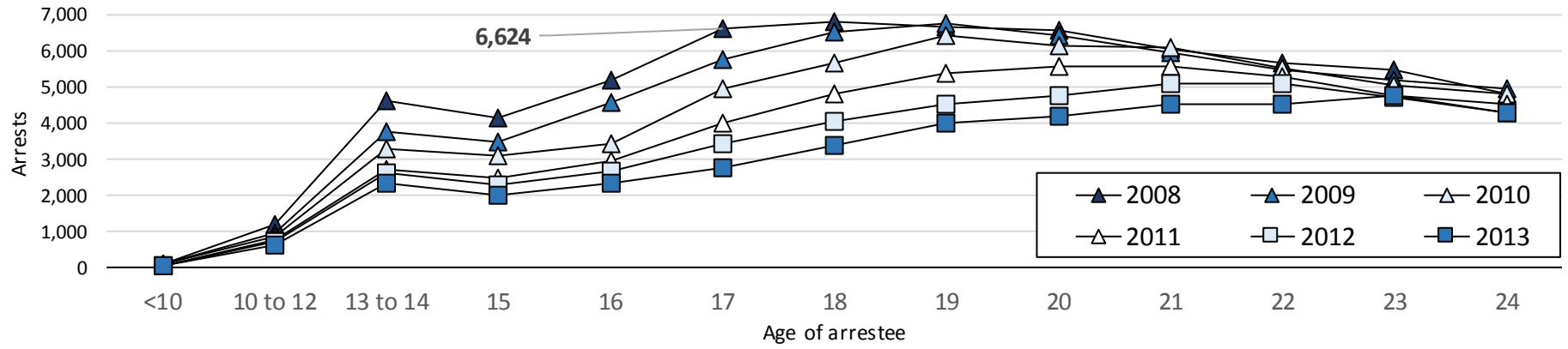
Arrests by age



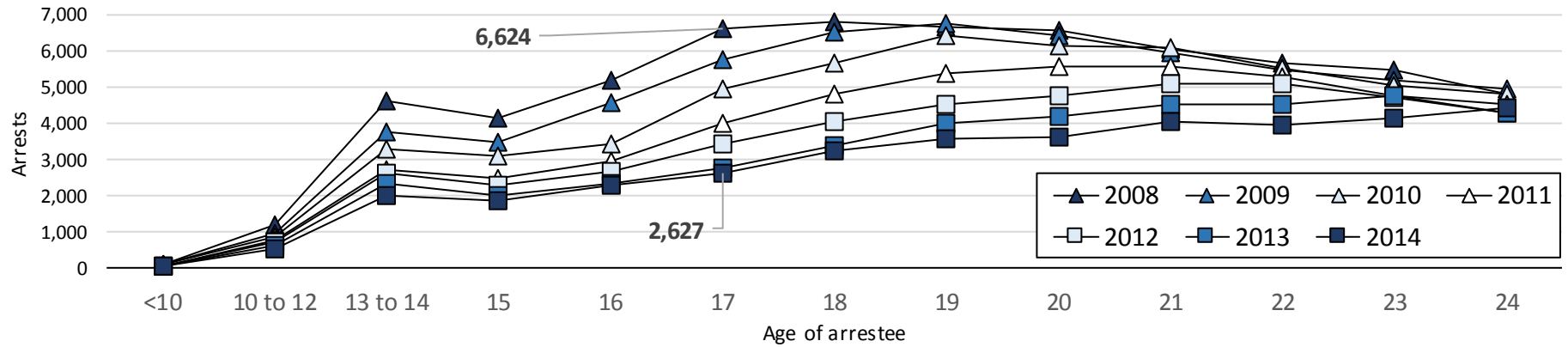
Raise the age: 17-year olds July 1, 2012

- **By 2012, arrests among youth aged 18-, 19- and 20-year old were down significantly**

Arrests by age



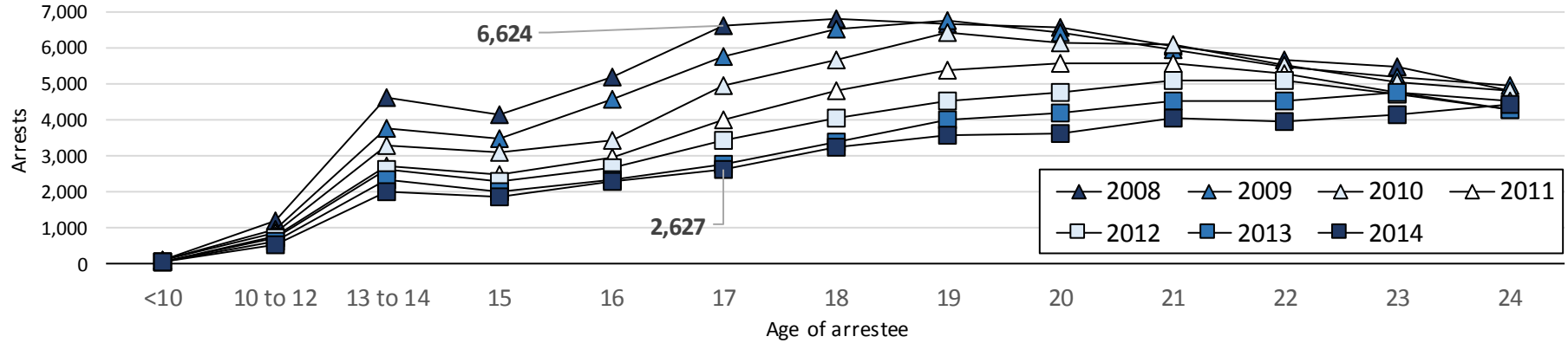
Arrests by age



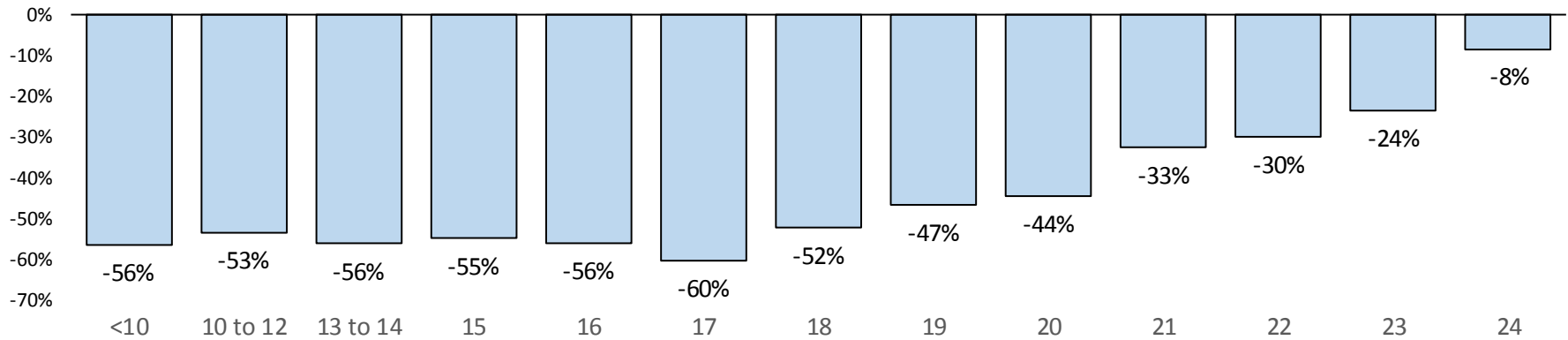
- **By 2014, the drop in arrests was edging towards older youth.**

Arrests by age

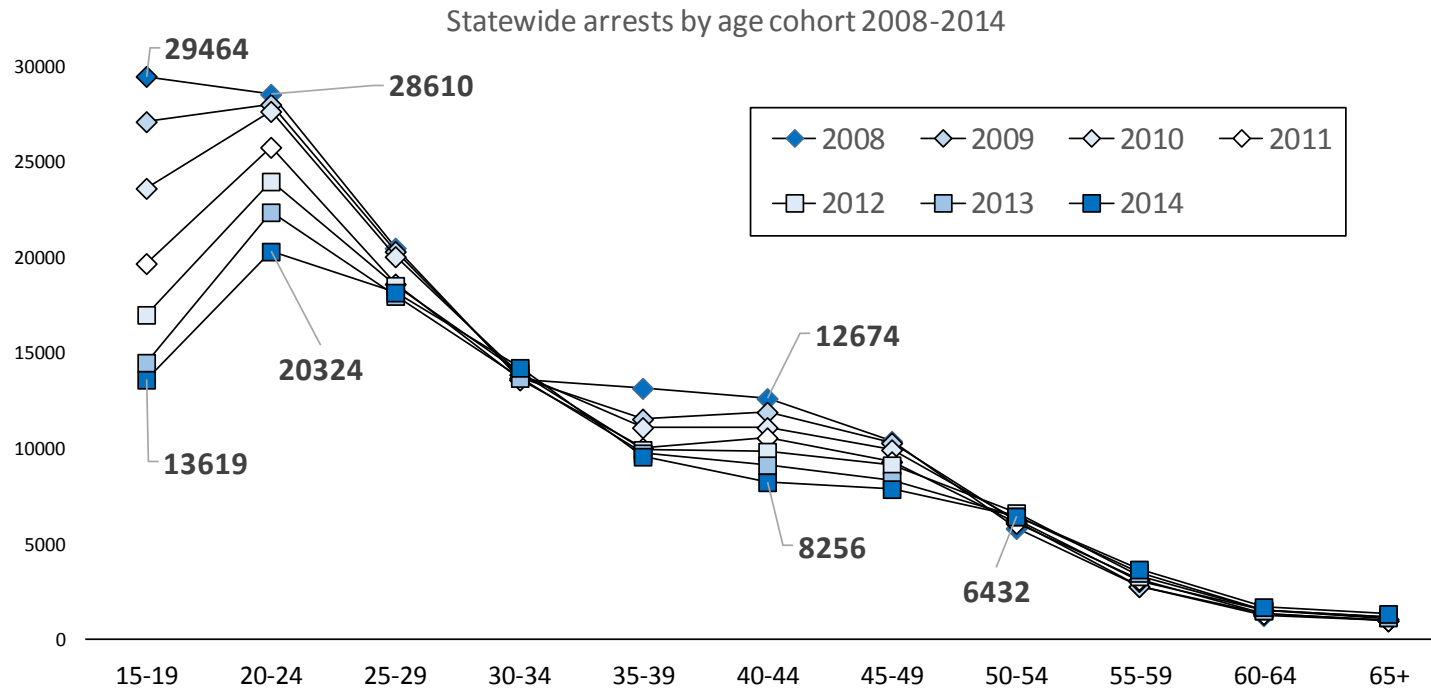
Change in statewide arrests by age 2008 to 2014



Percent change in statewide arrests by age 2008 to 2014



Arrests by age, 15-19 through 65+

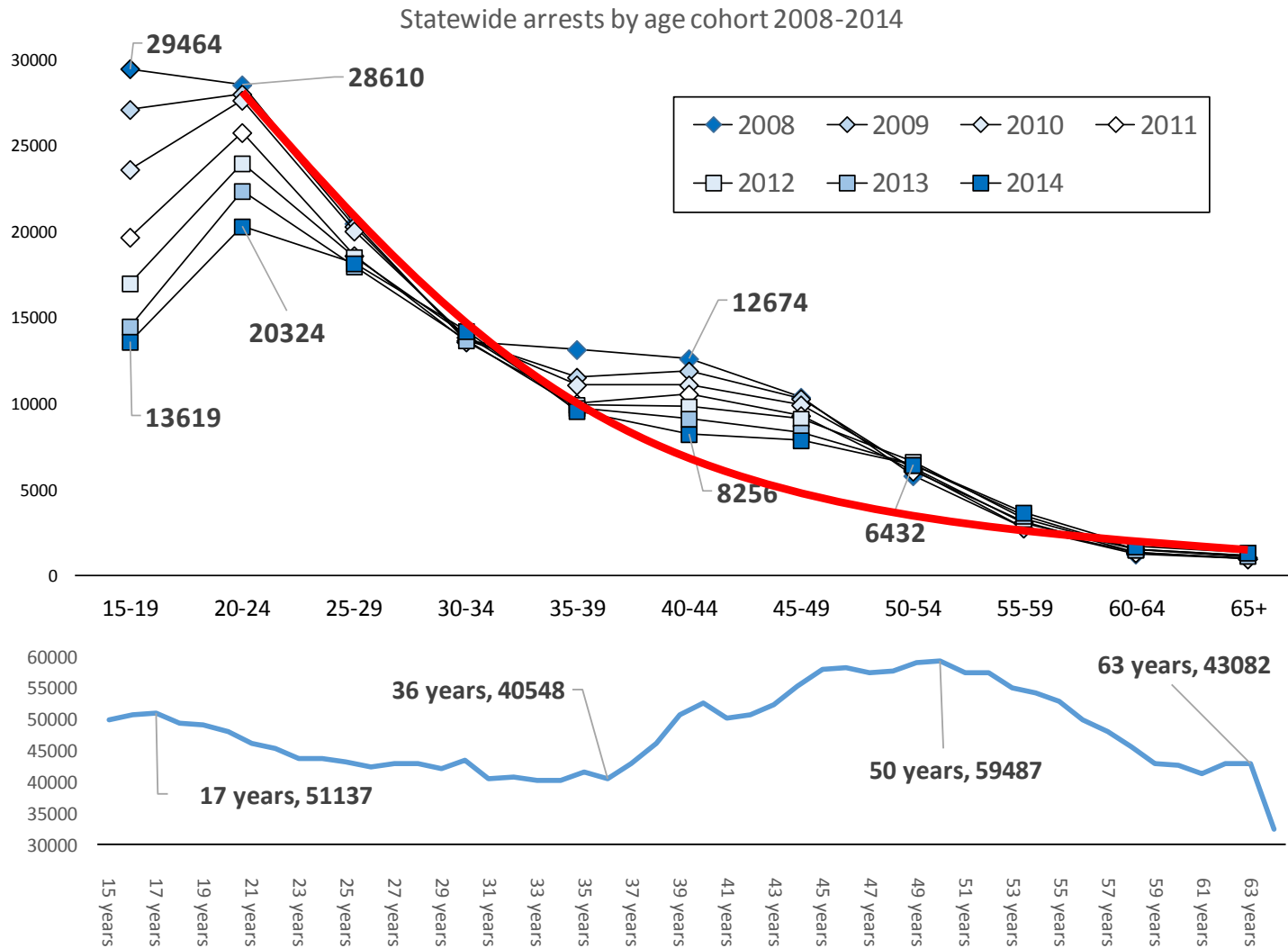


We observed that arrests among younger, offender cohorts declined most. Older age cohorts, actually, grew.

15-19	20-24	25-29	30-34	35-39	40-44	45-49	50-54	55-59	60-64	60+
-54%	-29%	-11%	5%	-28%	-35%	-24%	10%	32%	34%	30%

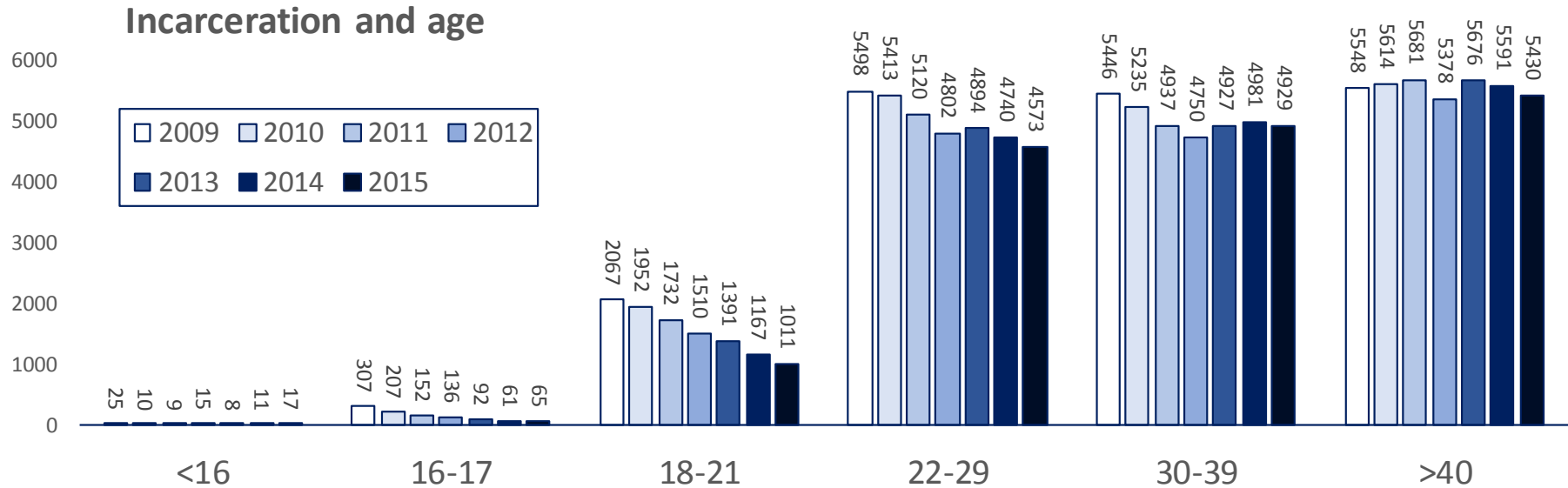
.. and then we observed a spread among those aged 35 to 50.

Arrests by age, 15-19 through 65+



2010 Census data

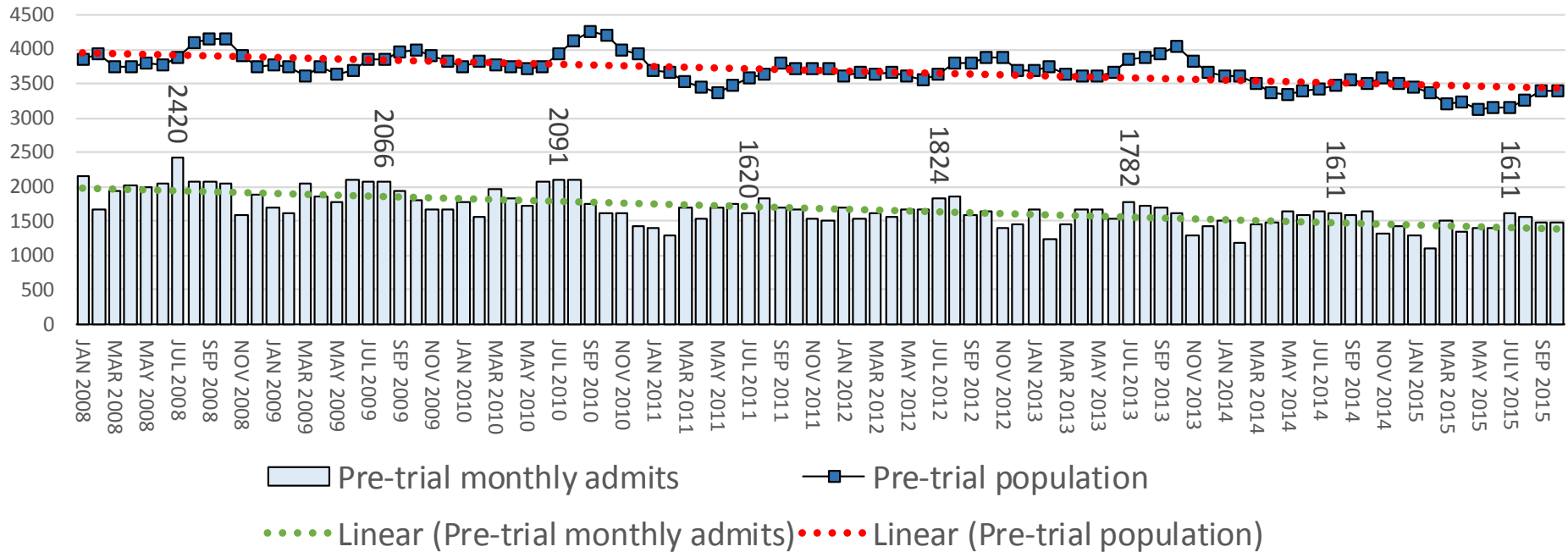
CT DOC prisoners by age group



Change in size of prison population by age group, July 1

AGE	2009	2010	2011	2012	2013	2014	2015	% change 2009 to 2015
<16	25	10	9	15	8	11	17	-32%
16-17	307	207	152	136	92	61	65	-79%
18-21	2,067	1,952	1,732	1,510	1,391	1,167	1,011	-51%
22-29	5,498	5,413	5,120	4,802	4,894	4,740	4,573	-17%
30-39	5,446	5,235	4,937	4,750	4,927	4,981	4,929	-9%
>40	5,548	5,614	5,681	5,378	5,676	5,591	5,430	-2%
Total	18,891	18,431	17,631	16,591	16,988	16,551	16,025	-15%

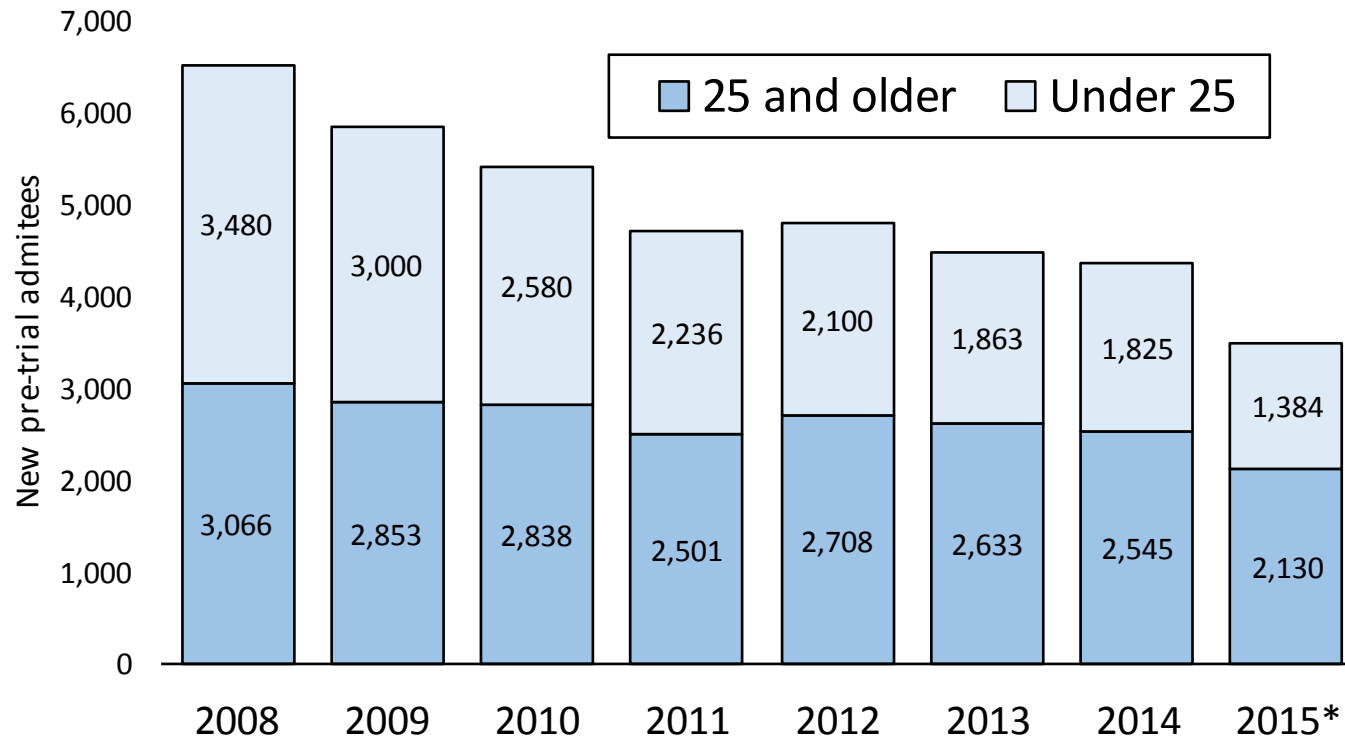
CT DOC: Monthly pre-trial admissions and pre-trial population



Discounting seasonal variations, the pre-trial, prison population and the number of persons admitted to prison on a pre-trial basis has been declining steadily since 2008.

Of persons admitted to prison in pre-trial status each month only about 25% are new to the prison system.

New persons admitted to the CT DOC on pre-trial status



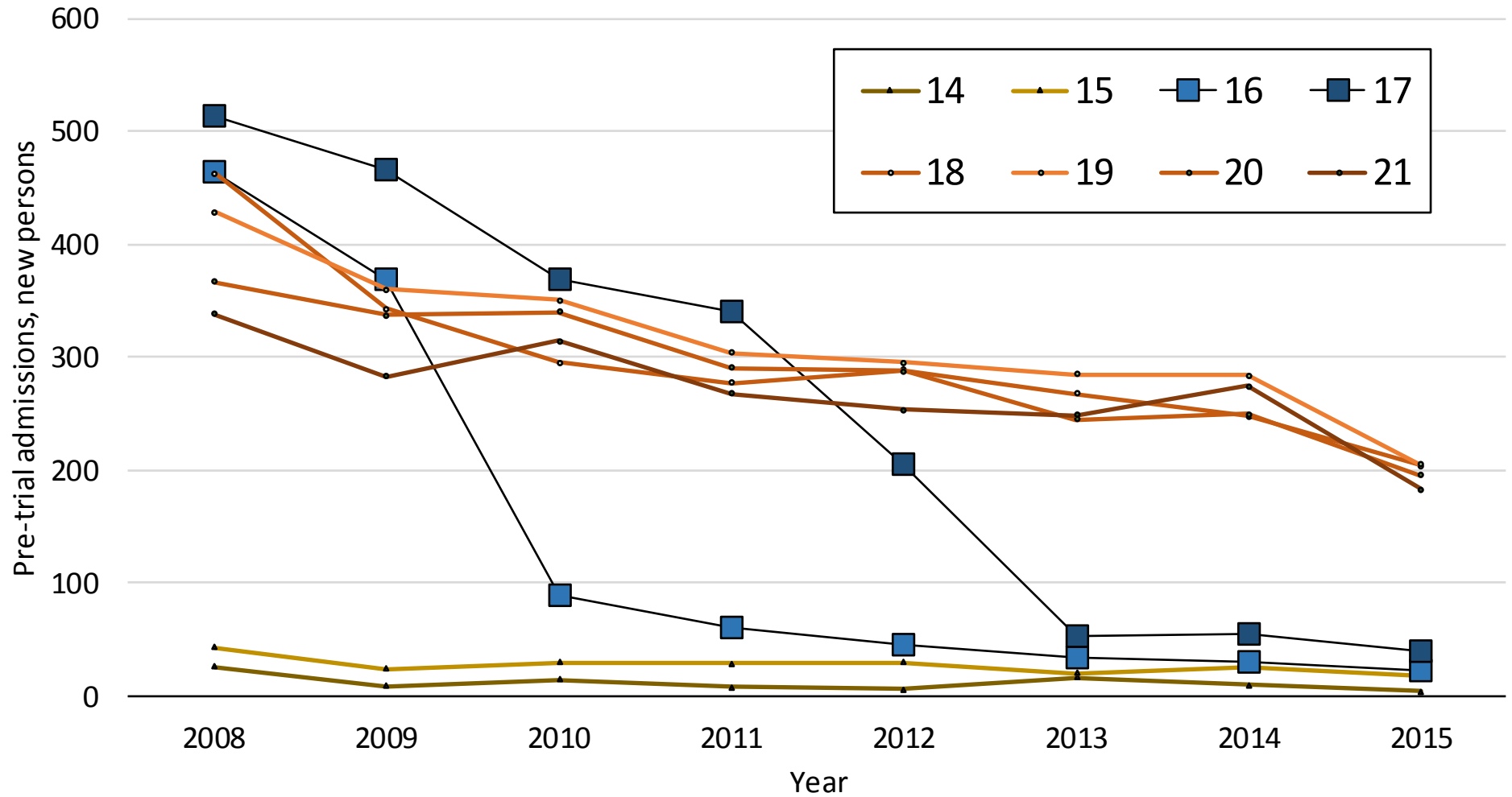
Percent change in the number of new persons admitted to DOC on pre-trial status, 2008 to 2014:

All persons: -33% (6,546 to 4,370)

Persons under 25: -48% (3,480 to 1,825)

Persons 25 and older: -17% (3,066 to 2,545)

New persons admitted to the CT DOC on pre-trial status by age at admit



OFFICE OF POLICY & MANAGEMENT

Criminal Justice

Policy & Planning Division



Presented by:

Mike Lawlor

**Criminal Justice Policy & Planning Division
CT OPM**