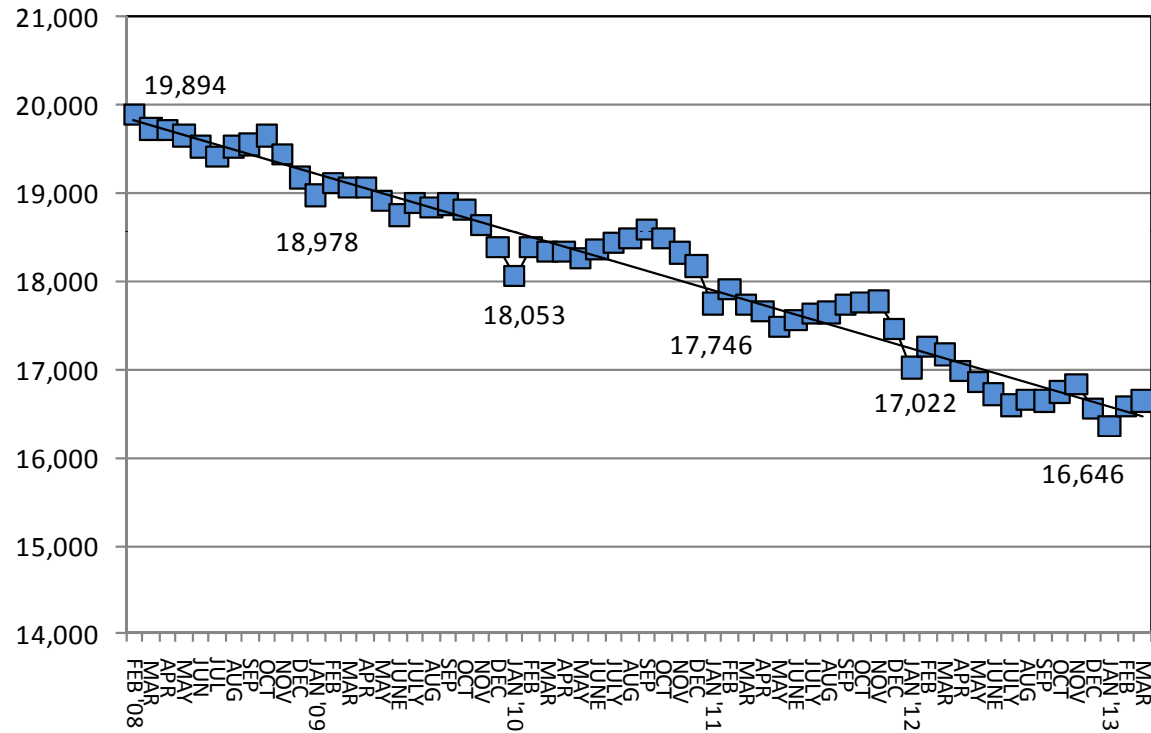


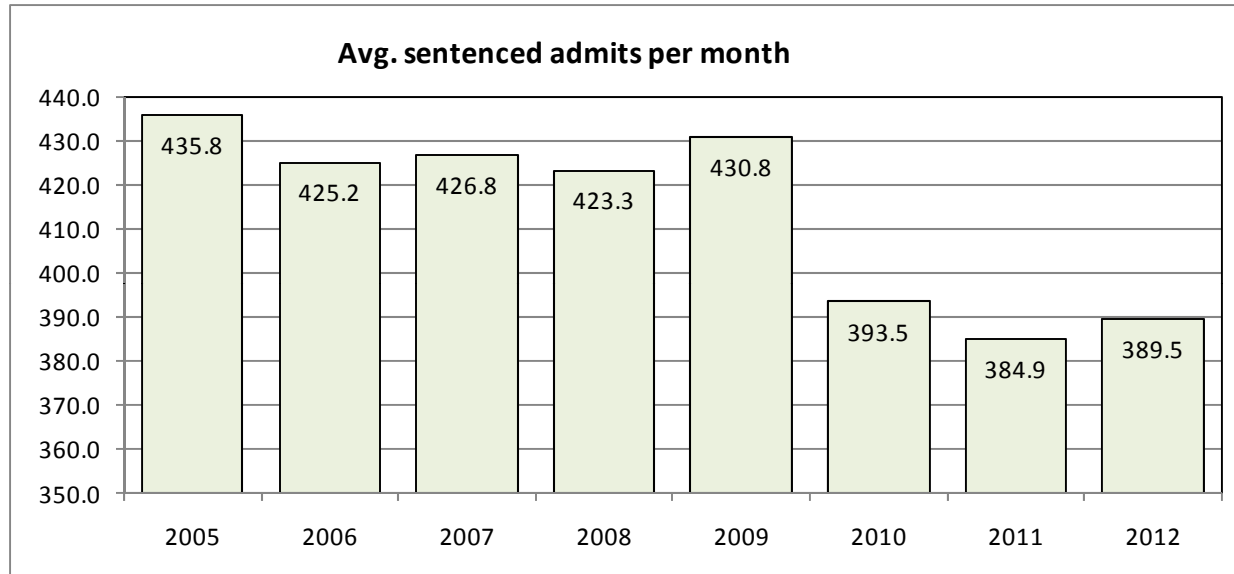
RREC – The Administration's Perspective

Mike Lawlor, Undersecretary
Criminal Justice Policy & Planning Division
Office of Policy and Management

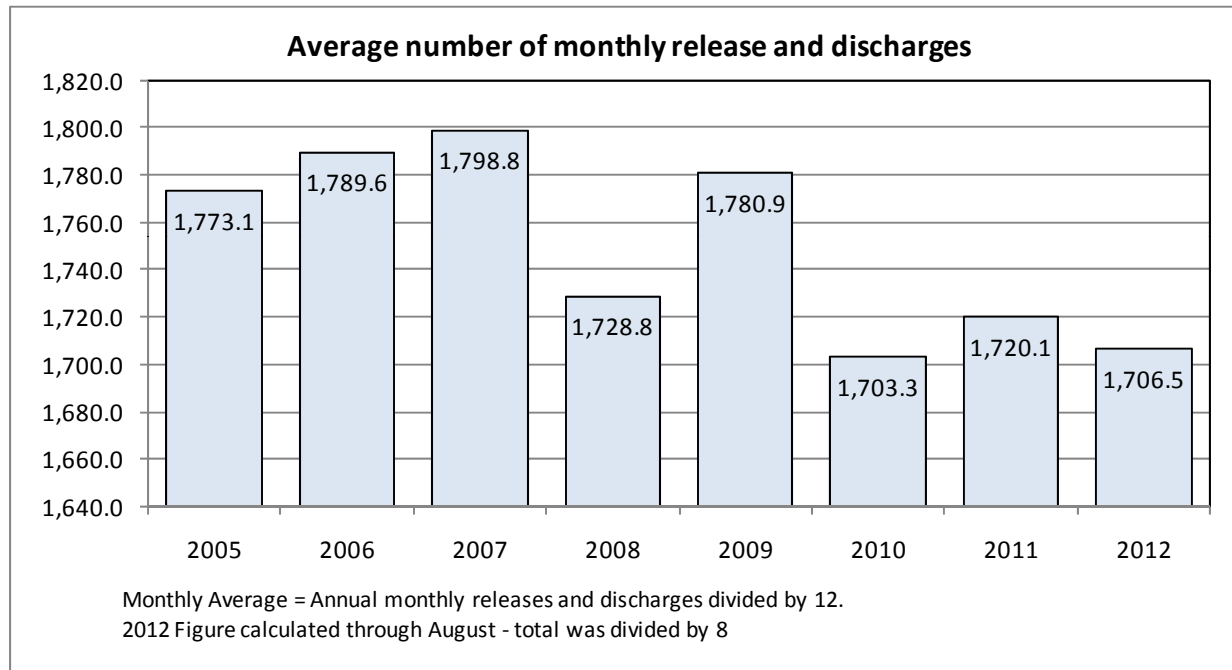
Connecticut's prison population since February 2008



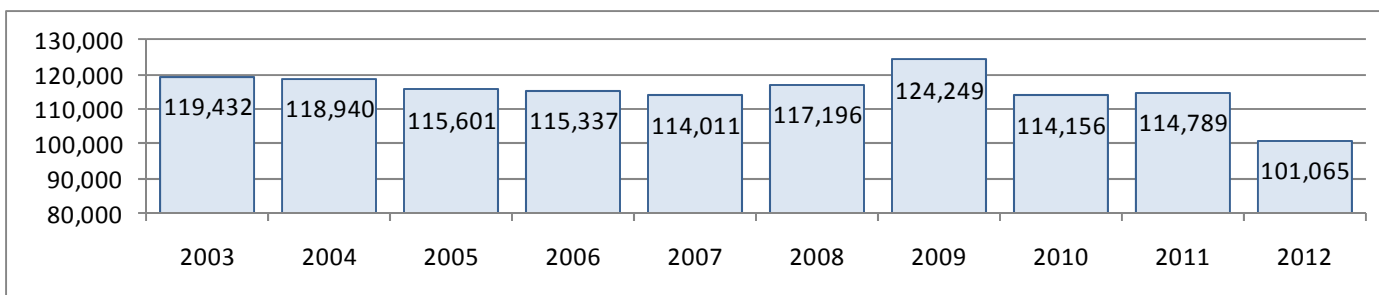
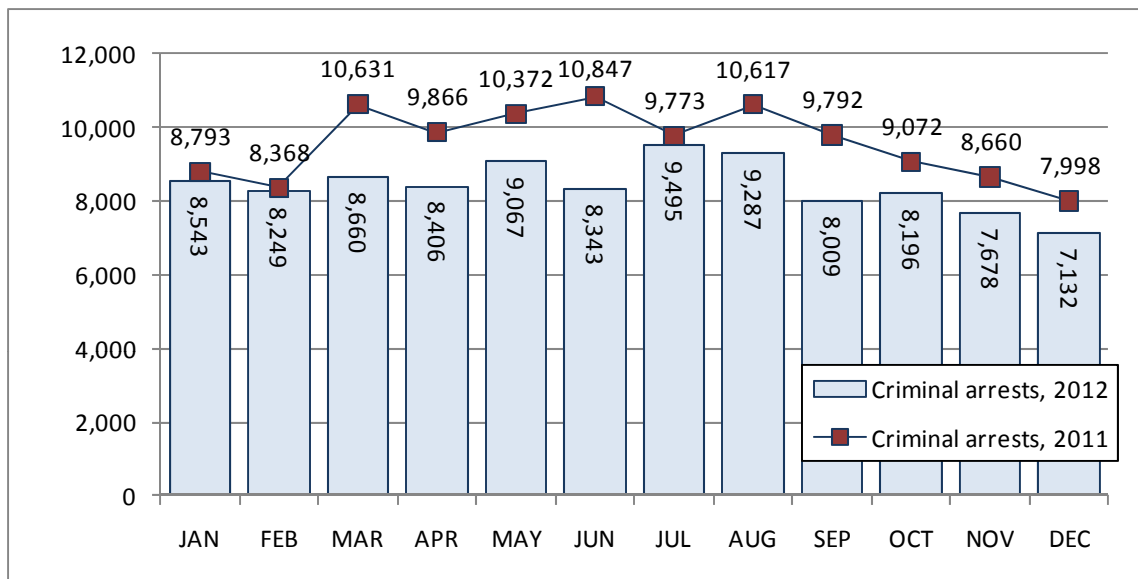
Average sentenced admits per month



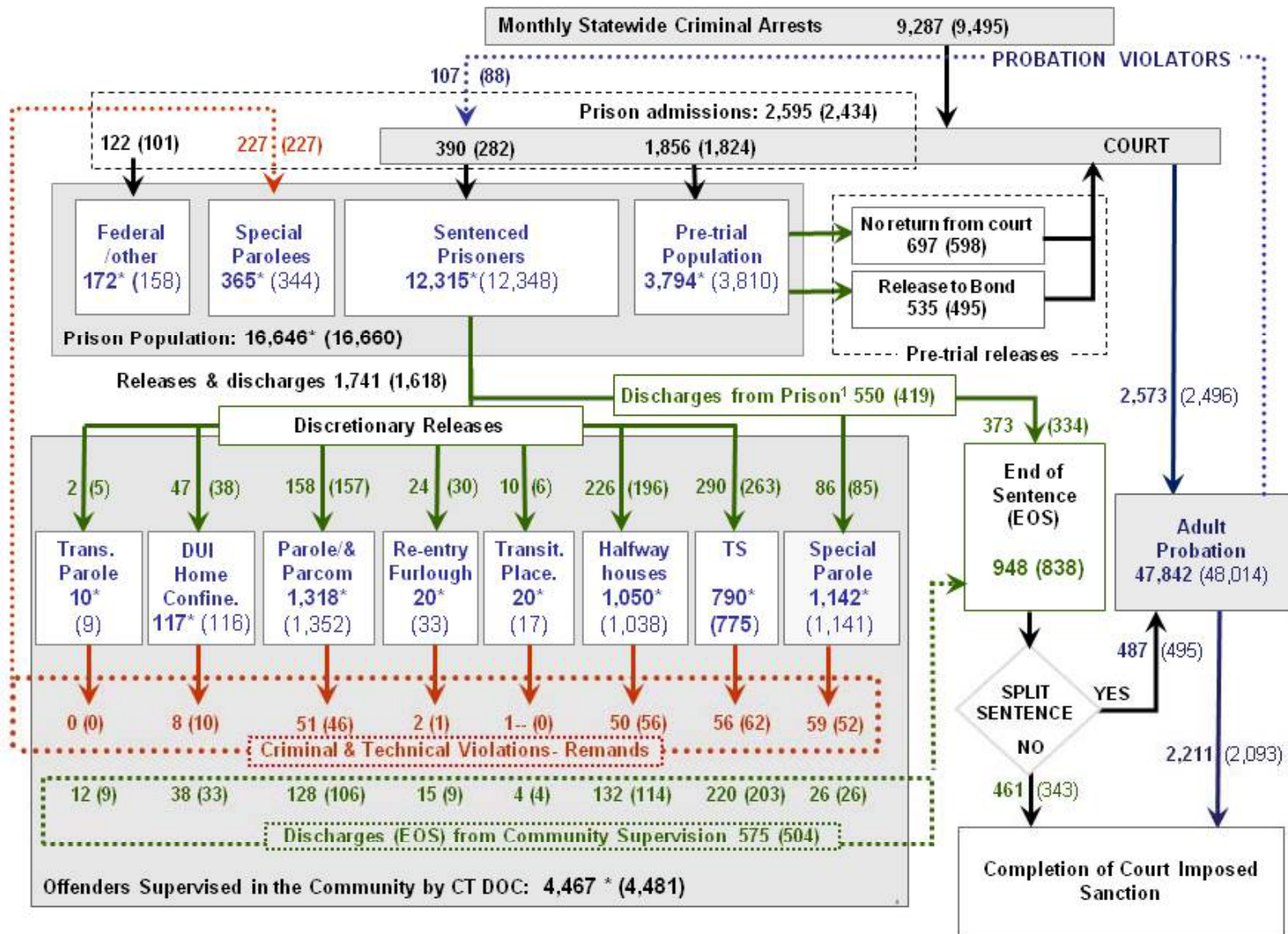
Average releases and discharges per month

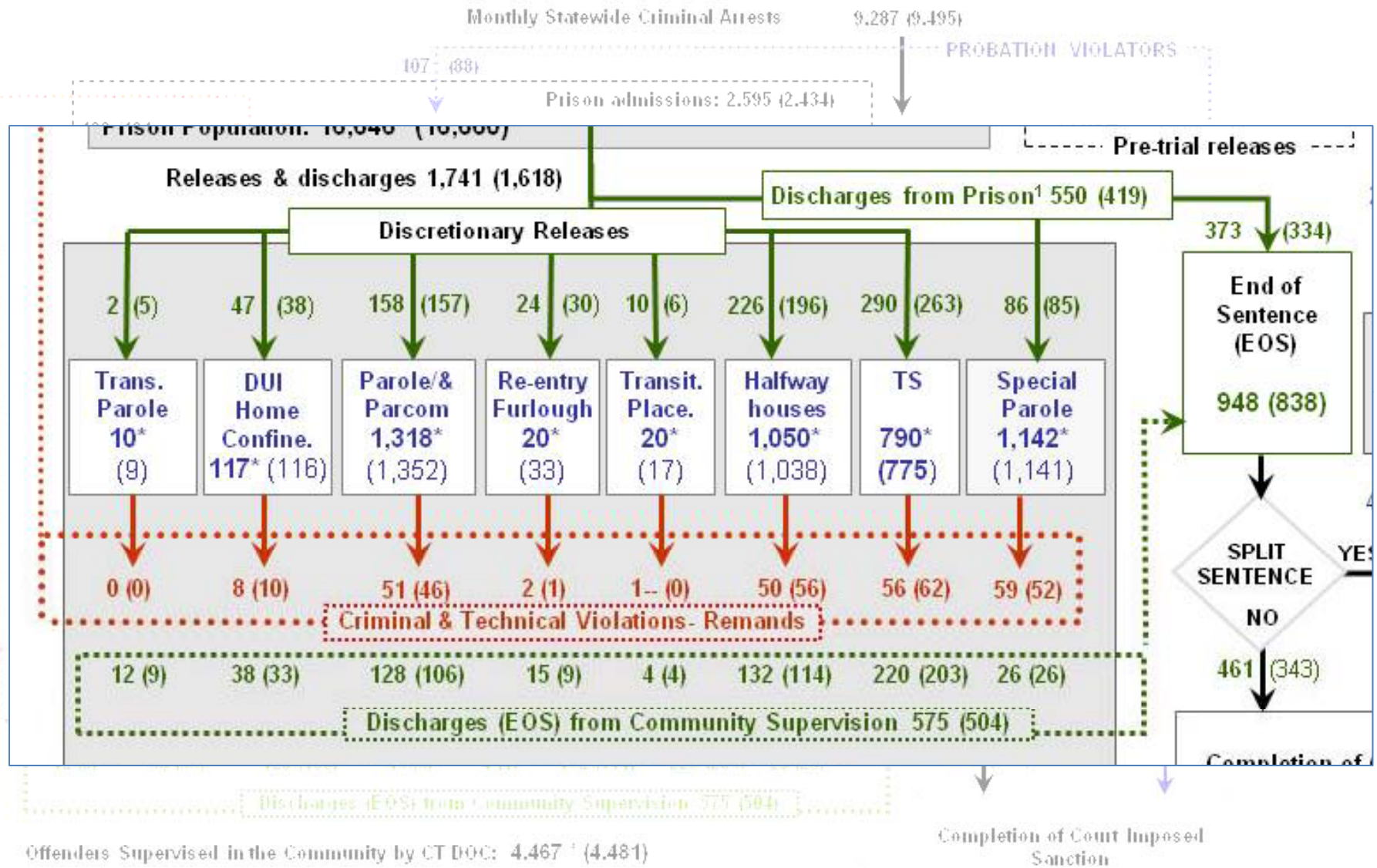


Monthly Criminal Arrests in CT



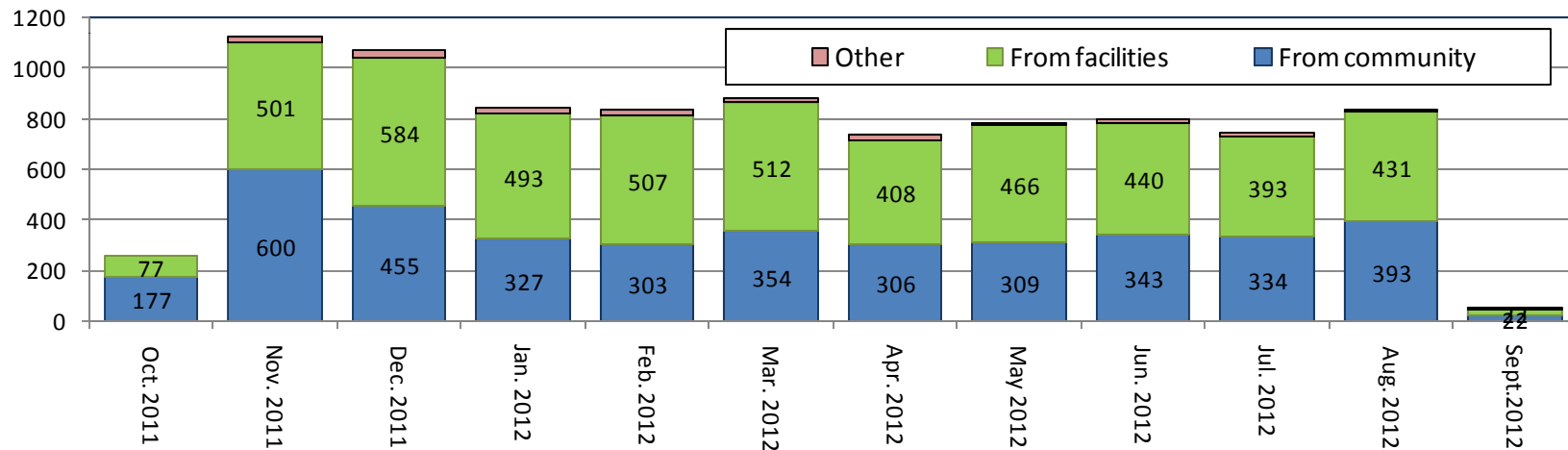
System chart – Monthly Indicators Report (Sept 2012)





RREC: releases and discharges

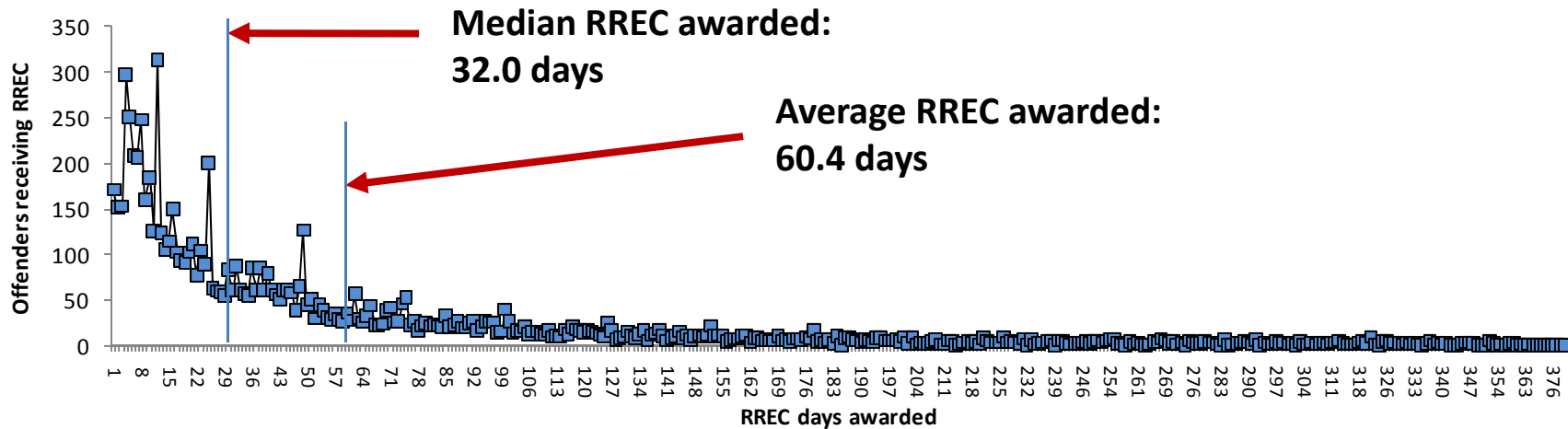
- Between October 5, 2011 and September 5, 2012,
 - 8,941 offenders were eligible to earn RREC
 - only 8,700 were awarded RREC.



This analysis augments a similar OPM analysis presented to CJ PAC in September 2012.

Days of credit earned by RREC receivers

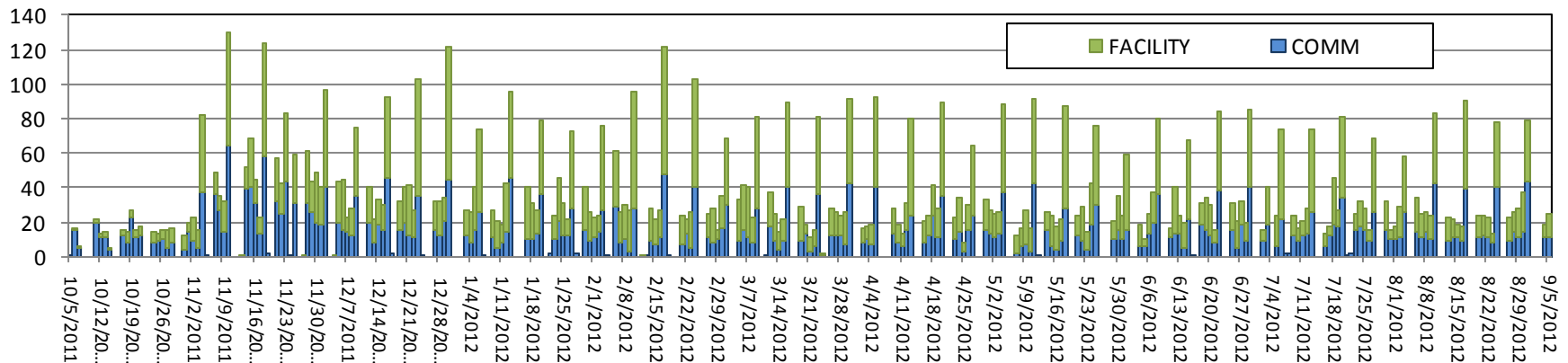
- ❑ The average offender who was granted RREC earned 60.4 days.
- ❑ The median offender earned 32 days of RREC.



- ❑ What do we know so far?
- ❑ Can we determine the recidivism rate for offenders who earned RREC?
- ❑ How does it compare to other groups of offenders?

Between October 5, 2011 and September 5, 2012,

- ❑ 8,941 offenders discharged from prison having earned RREC
- ❑ of these, 8,700 were awarded RREC



- ❑ By September 5, 2012, there were 1,403 readmissions to prison by these 8,941 men.
- ❑ These 1,403 admissions were made by 1,202 offenders

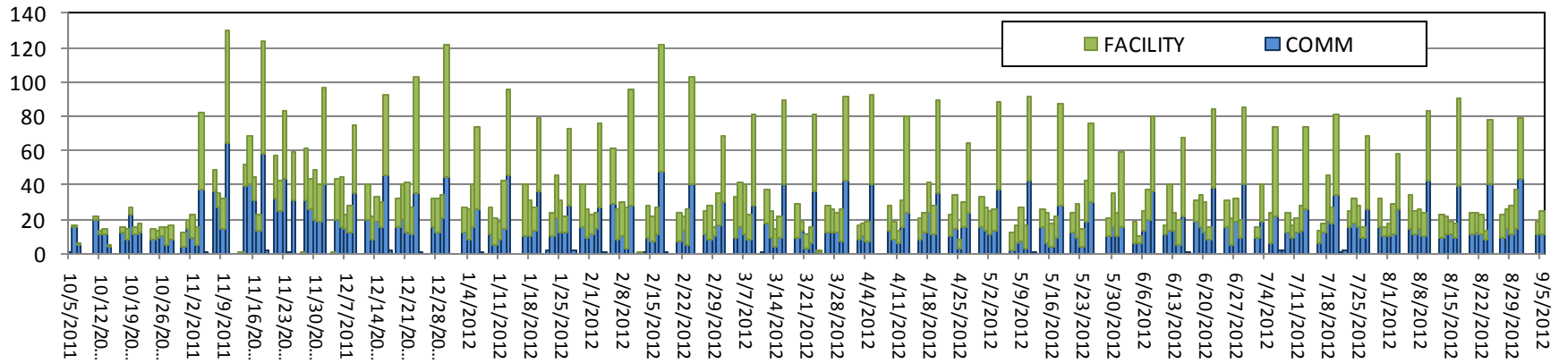
What about recidivism rates?

Recidivist: the simplest definition; a convicted criminal who reoffends

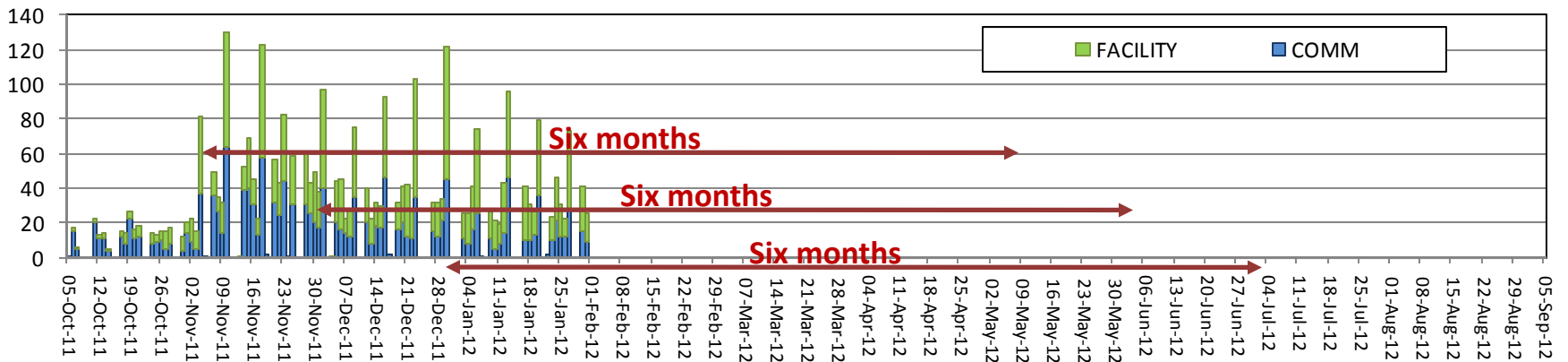
Recidivism rates describe how long, and the manner in which groups of offenders return to the system

There are three main concerns:

1. What events constitute recidivism
2. Cohort size and composition, and
3. What is a meaningful study interval.

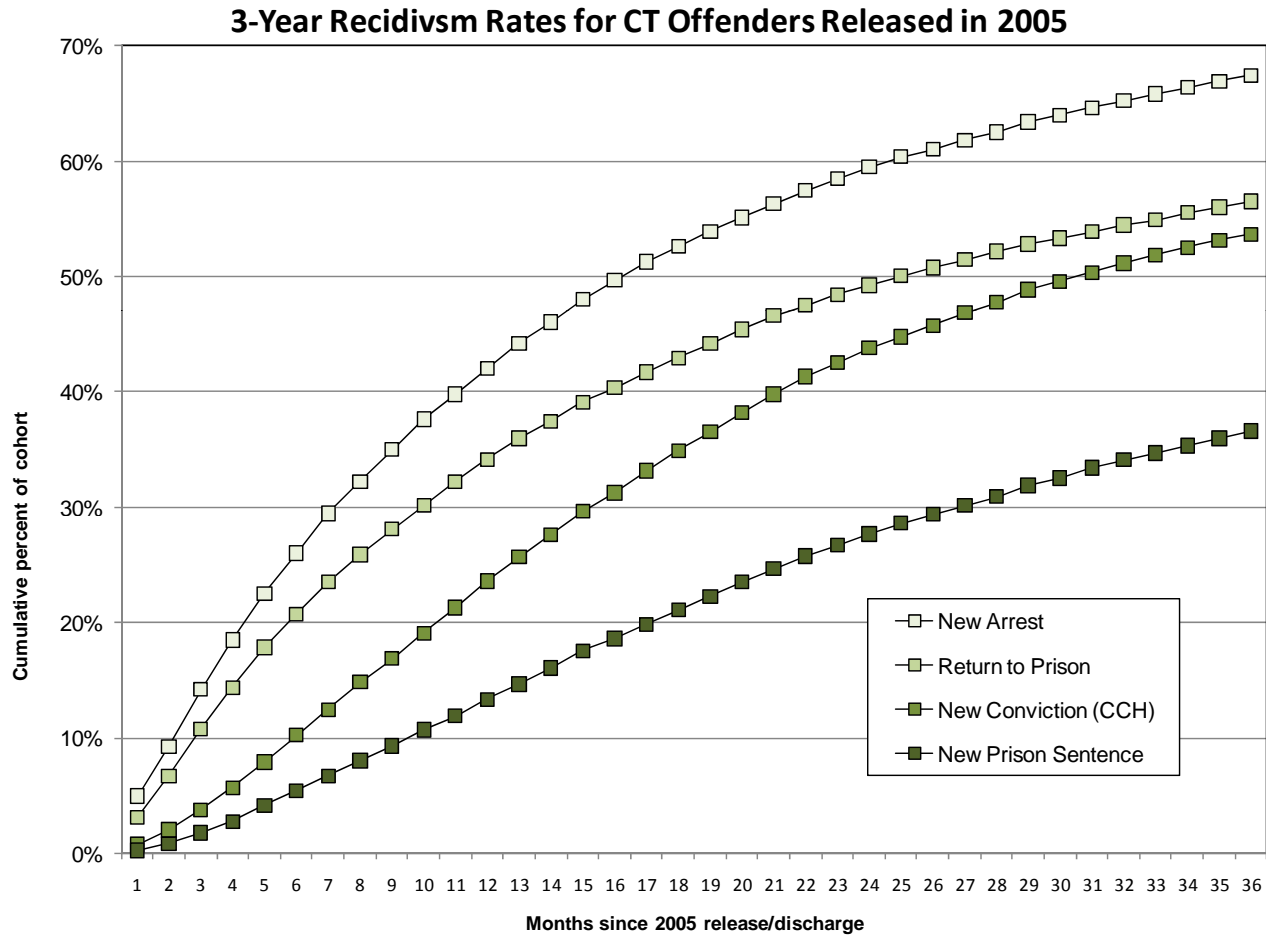


Some patience is required – the clock must run.

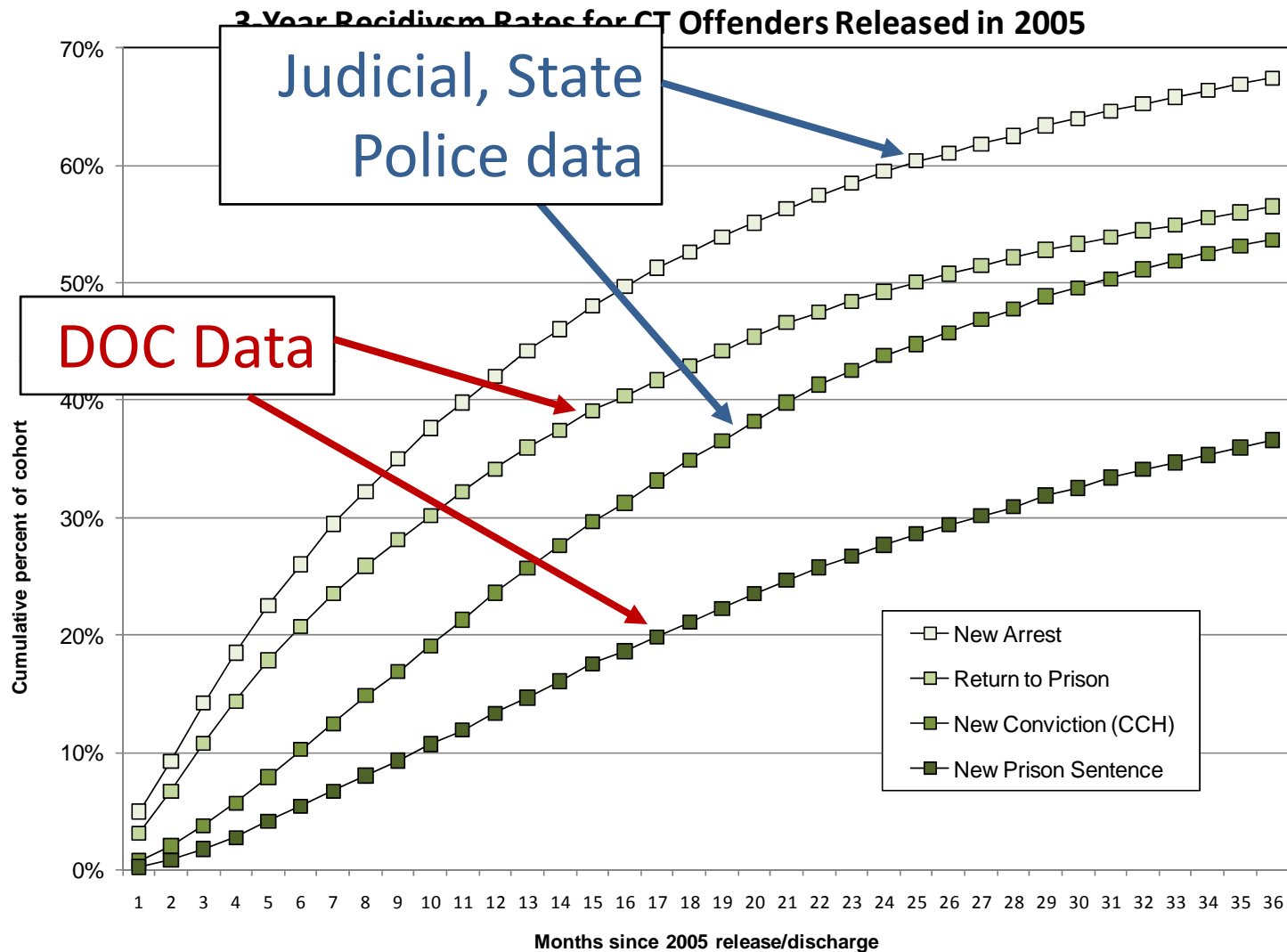


- ❑ OPM had been publishing annual recidivism studies of Connecticut prisoners for almost a decade.
- ❑ OPM:
 - ❑ Uses data supplied by the DOC, the State Police and the Judicial Branch (CSSD)
 - ❑ Applies a consistent methodology to our studies based on US DOJ practice
 - ❑ Has developed excellent benchmark data
- ❑ In our annual reports we track
 - ❑ New arrests
 - ❑ New convictions
 - ❑ Reincarceration events, and
 - ❑ New prison sentences

Typical analysis: 4 types of recidivism, offenders released or discharge during 2005

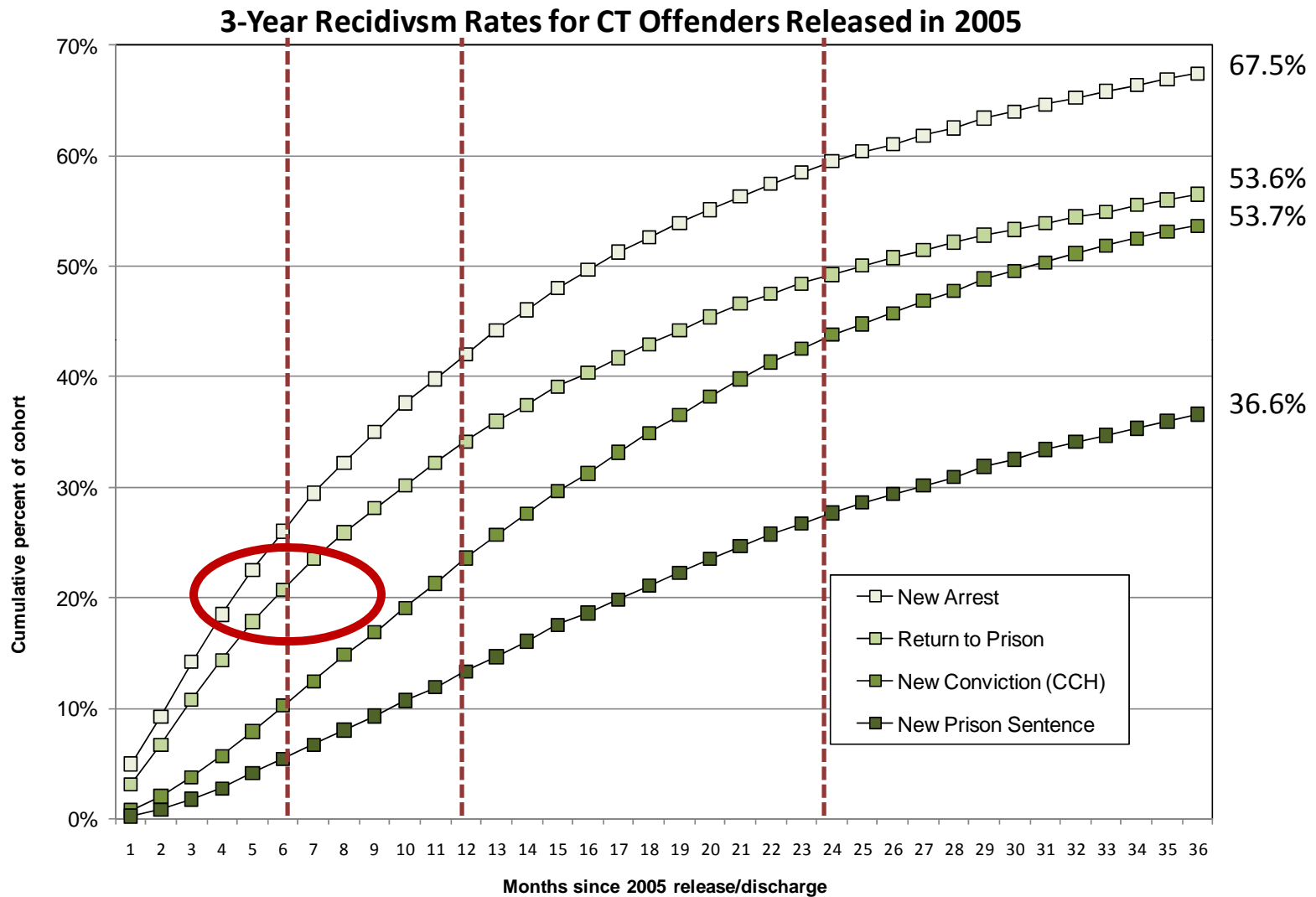


Measuring recidivism – Data Required + Time



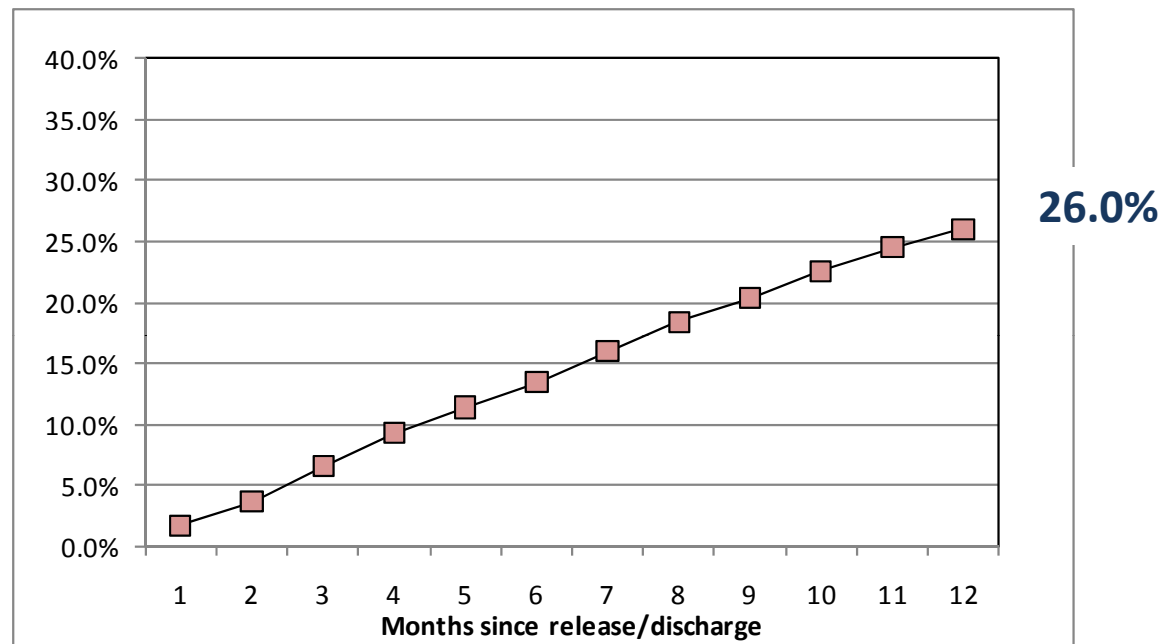
Time to let outcomes accumulate.

Measuring recidivism – 4 measures over time



Predictive and stable

RREC offenders: Return to prison w/in 12 months

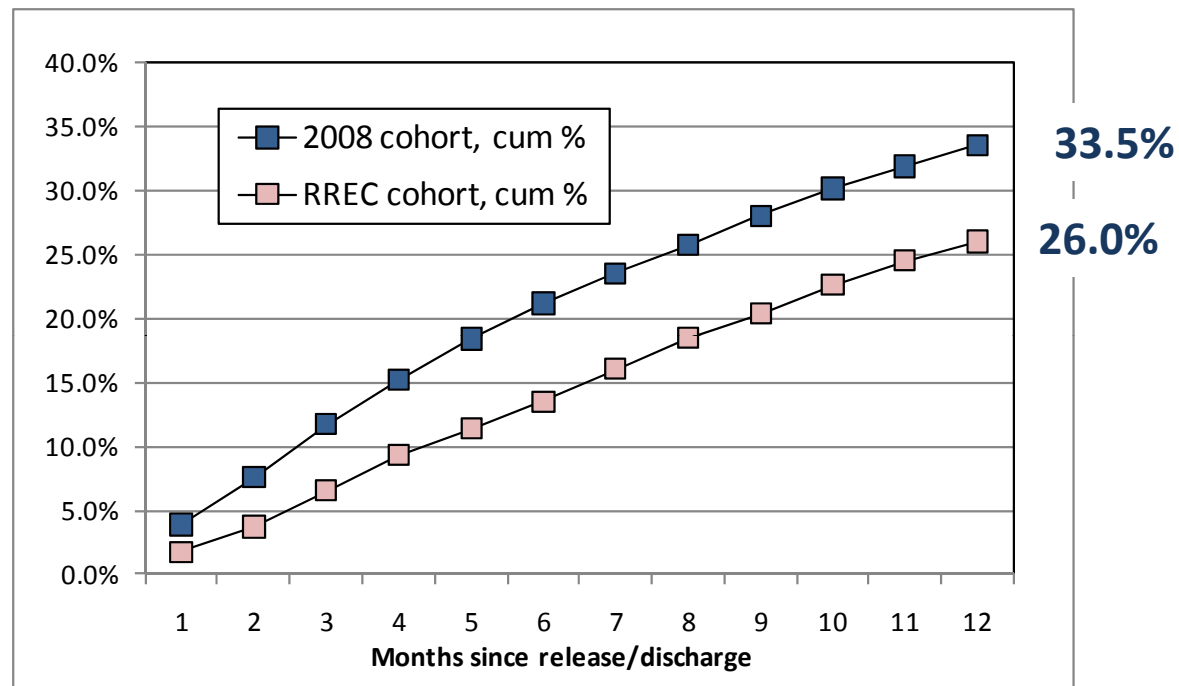


Return to prison provide the quickest measure of recidivism.
For the 3,279 offenders who had earned RREC between October 1, 2011 and January 31, 2012:

- 853 (26%) were back in prison* within 12 months

* Includes new pre-trial admits, remands for tech. and crim. violations and self-surrendering.

RREC offenders v. 2008 cohort Return to prison w/in 12 months

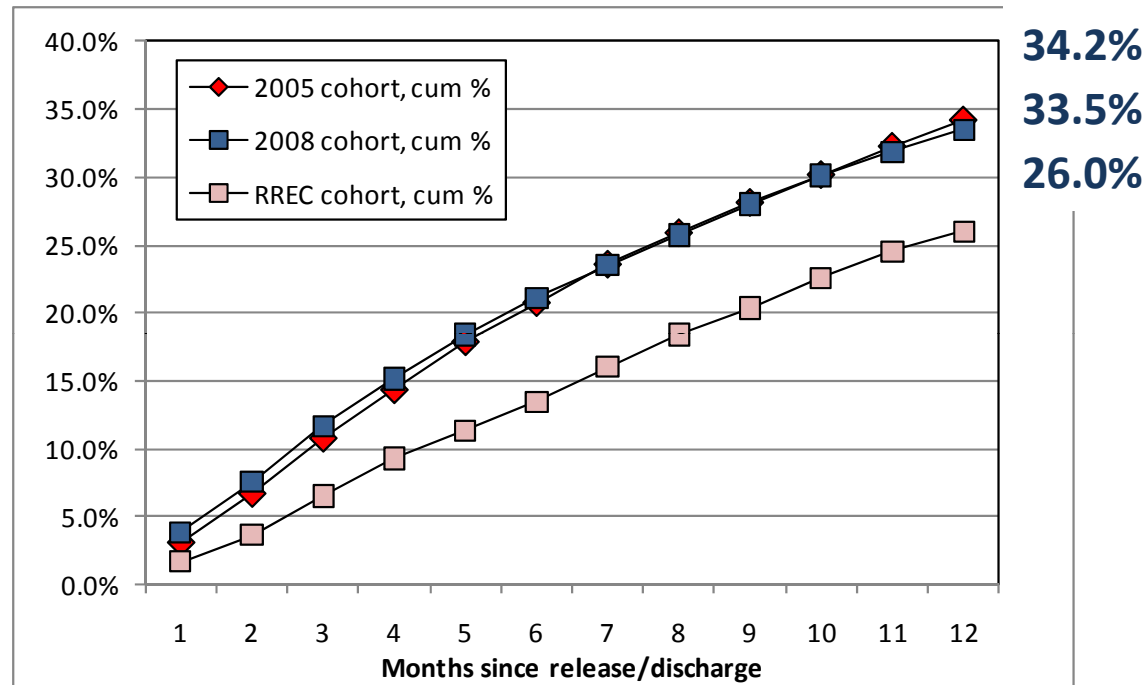


In 2008, 16,286 offenders were discharged or released from prison. In the 12 months after release, 33.5% were returned to prison

Among 3,279 offenders receiving RREC between October and January, 26% were returned to prison.

RREC offenders v. the 2008 & 2005 cohorts

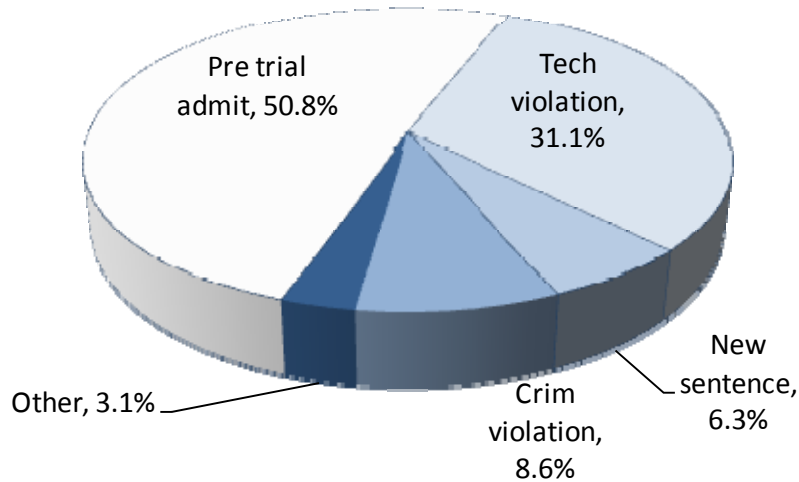
Return to prison w/in 12 months



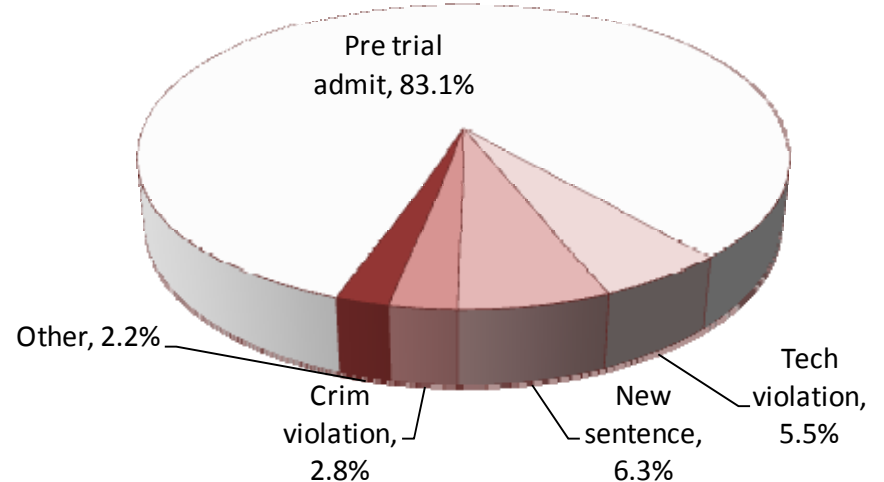
16,241 offenders were discharged or released from prison during 2005. These offenders returned to prison at rates consistent with offenders in the 2008 release/discharge cohort.

Why offenders returned RREC and 2008 cohorts

2008 cohort



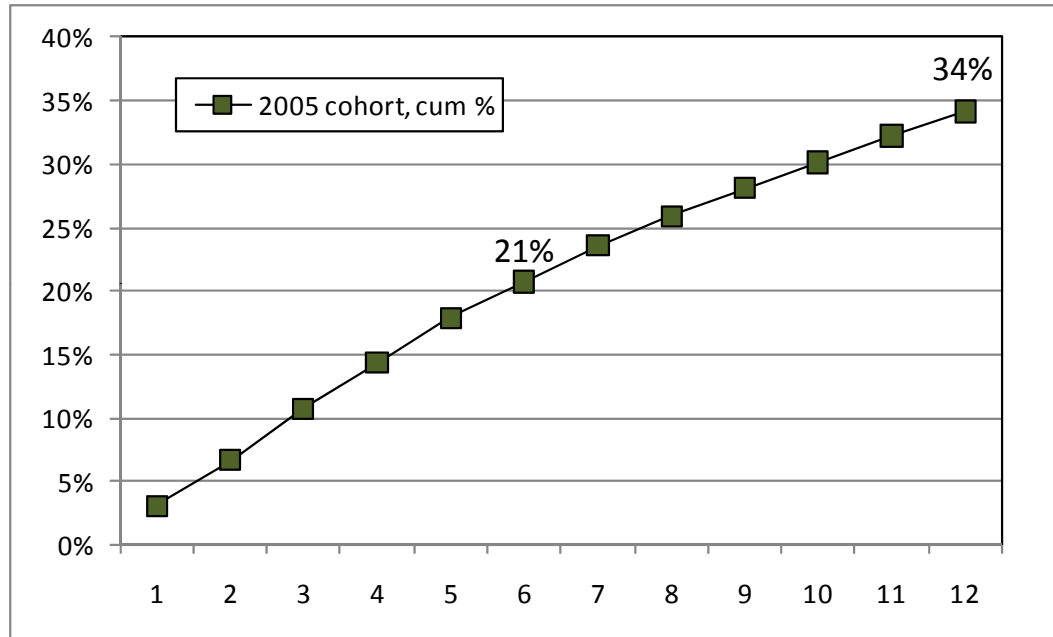
RREC cohort



For offenders released in 2008, 31% were returned to prison for technical violations of the terms of DOC community release.

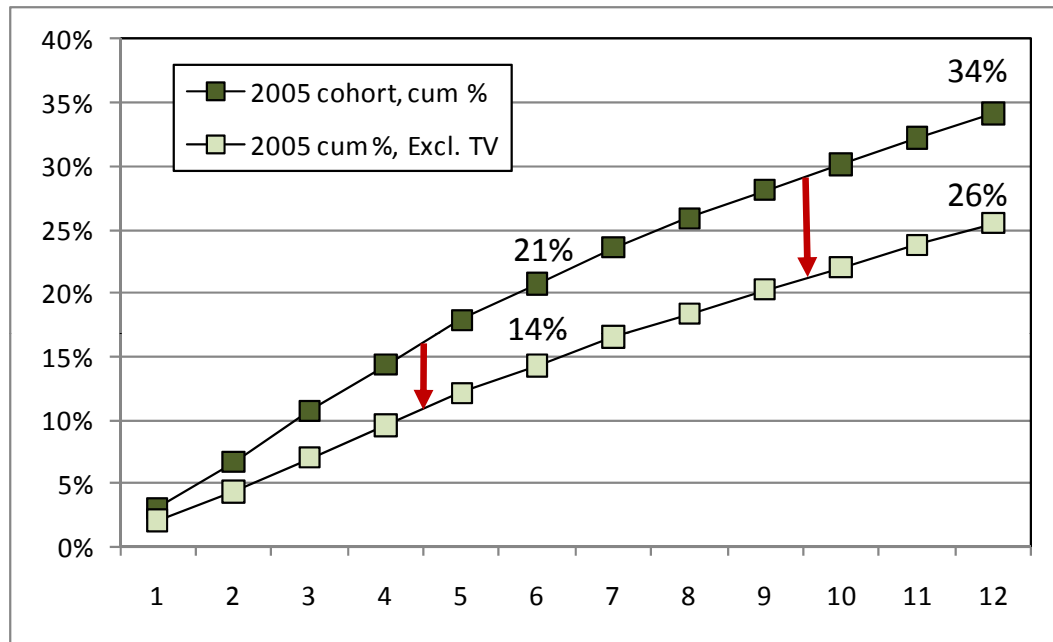
Among RREC offenders, remands to prison for technical violations dropped to under 6%.

Return to prison 2005 cohort



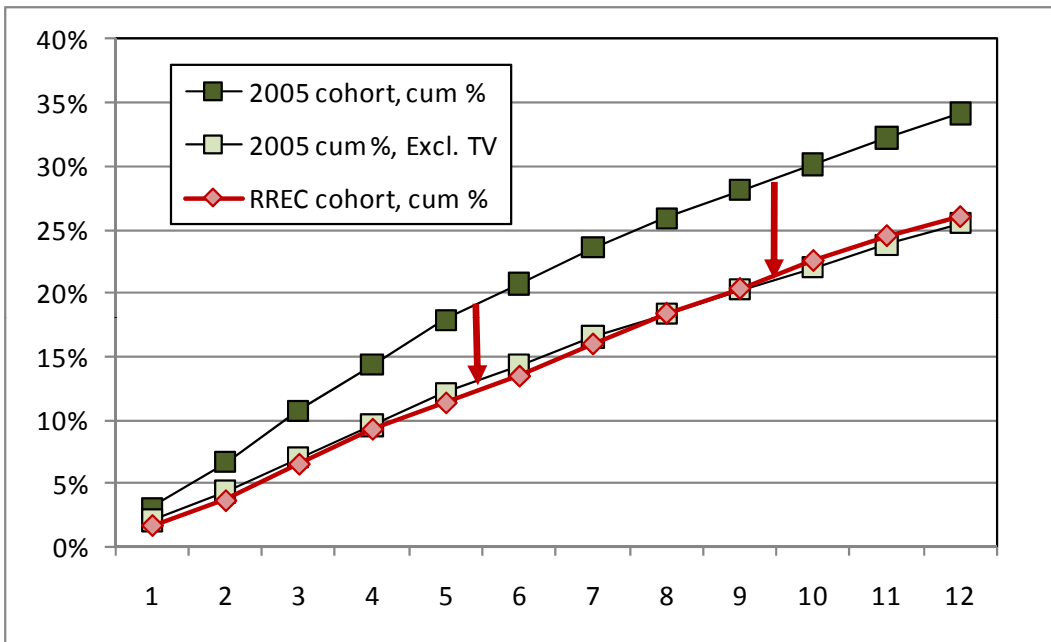
Among offenders released or discharged in 2005 :
34% had been returned to prison within 12 months.

Return to prison 2005 cohort



When technical violations were excluded, only 26% of offenders discharged in 2005 were reincarcerated within 12 months.

Return to prison, 2005 cohort and RREC cohort



Months since release or discharge	2005 cohort, cum %	2005 cum %, Excl. TV	RREC cohort, cum %
1	3.1%	2.1%	1.7%
2	6.7%	4.4%	3.7%
3	10.8%	7.1%	6.6%
4	14.3%	9.6%	9.3%
5	17.9%	12.2%	11.4%
6	20.7%	14.3%	13.5%
7	23.6%	16.6%	16.0%
8	25.9%	18.4%	18.4%
9	28.1%	20.3%	20.4%
10	30.2%	22.0%	22.6%
11	32.2%	23.8%	24.5%
12	34.2%	25.5%	26.0%

It is not coincidental that the 2005 RTP rates that exclude technical violations and the RREC RTP rates are so similar.

Summary of the analysis

- ❑ 12-month recidivism rates for offenders discharged with RREC were significantly lower than the rates for offenders discharged during 2005 and 2008.
- ❑ The difference in rates appears to be largely accounted for by the drop in the number of returns-to-prison for technical violations.
- ❑ When technical violations were removed – the recidivism rates for both 2005 and 2008 cohorts declined to a level consistent with that of the RREC offenders.

	Imnate id	Name	TPAI score	Sentence, days	Suspended after, days	Date sentenced	Last DOC admit	Actual release date	Estimated min. release date	Actual days incarcerated	Percent incarcerated	Release type
1	95277	WILSON,MARVIN	5	2920	2190	5/22/2003	3/18/2002	3/17/2008	3/16/2008	2,191	100%	eos to SP
2	302350	PHILLIPS,WADSWORT	5	6570	2190	4/30/2003	7/9/2002	7/8/2008	7/7/2008	2,191	100%	eos - jamaican citizen
3	268936	SALABERRIOS,NOEL	5	3650	365	9/19/2007	1/29/2007	1/29/2008	1/29/2008	365	100%	eos
4	306755	COLE,KEVIN	5	5100	2190	4/21/2004	12/4/2002	12/2/2008	12/2/2008	2,190	100%	eos -jamaican citizen
5	324484	PASCAL,BRENT	5	2555	1095	2/3/2006	2/2/2005	2/2/2008	2/2/2008	1,095	100%	eos, dominican citizen
6	338290	GUIRAND,FRITZ D	5	1460	365	7/9/2007	7/9/2007	7/8/2008	7/8/2008	365	100%	eos
7	306991	PADILLA,JIMMY JERRY	5	2920	1825	7/3/2003	6/30/2003	6/27/2008	6/28/2008	1,824	100%	eos honduran citizen
8	306997	PADILLA,JIM HARRY	5	2920	1825	7/3/2003	6/30/2003	6/27/2008	6/28/2008	1,824	100%	eos honduran citizen
9	326259	ROBINSON,STEFAN N	5	3650	1460	11/4/2005	2/10/2005	12/15/2008	2/9/2009	1,404	96%	parole
10	297007	HARRISON,PAUL	5	4745	2555	2/14/2003	12/21/2001	7/29/2008	12/19/2008	2,412	94%	parole
11	57999	CIANCI,RICHARD	5	3650	1825	5/28/2004	9/14/2003	5/27/2008	9/12/2008	1,717	94%	parole
12	267655	DONNELLY,MICHAEL	5	2190	2190	6/26/2003	4/10/2003	11/12/2008	4/8/2009	2,043	93%	parole
13	283901	RESTO,FRANKIE	5	4745	2250	1/23/2007	7/31/2006	4/12/2012	9/27/2012	2,082	93%	eos, RREC
14	218881	ARRIAGA,ANGEL	5	5110	2190	7/17/2003	9/30/2002	4/14/2008	9/28/2008	2,023	92%	parole
15	300392	EVANS,ALEX GODFREY	5	4380	2555	7/21/2003	4/29/2002	9/19/2008	4/27/2009	2,335	91%	eos
16	319251	ROSS,NNAMDII R	5	3650	1350	7/20/2005	11/8/2004	3/25/2008	7/20/2008	1,233	91%	parole
17	329194	SCOTT,BERNARD	5	2555	1260	9/16/2005	3/3/2005	4/18/2008	8/14/2008	1,142	91%	CR
18	291885	GARDNER,DERMAINE	5	3650	1825	7/1/2004	3/18/2004	9/15/2008	3/17/2009	1,642	90%	CR
19	275238	PETTWAY,MARQUIS	5	6570	3560	9/6/2000	7/6/1999	4/10/2008	4/4/2009	3,201	90%	parole
20	309283	BANTON,STEVE ANTH	5	1980	1980	11/14/2003	10/18/2003	7/8/2008	3/20/2009	1,725	87%	CR
21	290232	QUINONES,ALEXIS	5	2555	2555	4/1/2002	5/22/2001	5/10/2007	5/20/2008	2,179	85%	parole
22	13239	BURNEY,LEONARD	5	3650	3650	9/10/1998	2/9/1998	8/17/2006	2/7/2008	3,111	85%	CR
23	316012	KRASOWSKI,THOMAS	5	3650	1825	10/7/2004	8/26/2004	11/14/2008	8/25/2009	1,541	84%	CR
24	316759	JACKSON,ERICK	5	3650	1825	4/30/2004	11/21/2003	1/28/2008	11/19/2008	1,529	84%	CR
25	56811	DAVENPORT,DAVID	5	3650	3650	5/26/2000	3/12/1999	7/10/2007	3/9/2009	3,042	83%	CR
26	316046	HENNEBERRY,MATTHE	5	4380	1825	10/22/2004	4/3/2004	5/14/2008	4/2/2009	1,502	82%	CR
27	180152	DIAZ,SIGFREDO	5	5840	2920	6/7/2002	9/4/2001	3/31/2008	9/2/2009	2,400	82%	CR
28	326633	GREENE,DONALD L	5	2920	1825	9/2/2005	11/22/2004	10/10/2008	11/21/2009	1,418	78%	CR
29	307859	MARTIN,KENNETH JAC	5	3650	1825	4/12/2004	12/15/2003	10/29/2007	12/13/2008	1,414	77%	CR
30	334848	GARAY,JOEL	5	2555	1095	5/25/2006	10/3/2005	1/17/2008	10/2/2008	836	76%	CR
31	323836	RICHARDSON,STEVEN	5	4830	1825	11/21/2005	8/17/2004	6/4/2008	8/16/2009	1,387	76%	CR
32	323923	CLARK,MATTHEW T	5	4830	1825	5/16/2005	12/16/2004	9/24/2008	12/15/2009	1,378	76%	CR
33	319304	JOYCE,ROBERT	5	4380	1620	12/6/2004	3/20/2004	7/26/2007	8/26/2008	1,223	75%	CR
34	326299	JOHNSON,TYRON	5	3650	1095	11/4/2005	2/10/2005	5/8/2007	2/10/2008	817	75%	CR
35	318864	SMITH,STEVEN T	5	3650	1825	11/3/2004	9/28/2004	6/17/2008	9/27/2009	1,358	74%	CR
36	332067	LEE,DAVID	5	3650	1460	6/24/2005	6/24/2005	5/28/2008	6/23/2009	1,069	73%	CR
37	276654	HARRELL,JAMES C	5	6570	1825	11/10/2005	5/25/2003	1/19/2007	5/23/2008	1,335	73%	CR
38	325118	VILLEGAS,RAFAEL	5	2920	1260	2/4/2005	9/28/2004	3/22/2007	3/11/2008	905	72%	CR
39	348087	ARCE,LUIS	5	2920	730	2/9/2007	2/9/2007	7/9/2008	2/8/2009	516	71%	CR
40	343504	PASK,BENJAMIN	5	3650	1095	8/30/2006	8/30/2006	8/21/2008	8/29/2009	722	66%	CR
41	323818	HANSON,JEROME	5	2555	1460	7/8/2005	8/16/2004	2/19/2007	8/15/2008	917	63%	CR
42	349906	MOISE,JOHN	5	4380	900	12/20/2007	4/26/2007	10/10/2008	10/12/2009	533	59%	CR

	Inmateid	Name	TPAI score	Sentence, days	Suspended after, days	Date sentenced	Last DOC admit	Actual release date	Estimated min. release date	Actual days incarcerated	Percent incarcerated	Release type
1	95277	WILSON,MARVIN	5	2929	2190	5/22/2008	3/18/2002	9/17/2008	3/16/2008	2,191	100%	eos to SP
2	302350	PHILLIPS,WADSWORTH	5	6578	2190	4/30/2008	7/9/2002	7/14/2008	7/7/2008	2,191	100%	eos -jamaican citizen
3	268936	SALABERRIO,NOEL	5	3658	365	9/19/2007	1/29/2007	1/29/2008	1/29/2008	365	100%	eos
4	306755	COLE,KEVIN	5	5188	2190	4/21/2004	12/4/2002	12/2/2008	12/2/2008	2,190	100%	eos -jamaican citizen
5	324484	MICAL,JOHN	5	2333	1095	2/3/2006	2/2/2005	2/2/2008	2/2/2008	1,095	100%	eos, dominican citizen
6	338290	GURRIND,FITZ D	5	1460	365	7/3/2007	7/9/2007	7/14/2008	7/8/2008	365	100%	eos
7	306991	PADELLA,JIMMY JEFF	5	2929	1825	7/18/2008	6/30/2003	6/27/2008	6/28/2008	1,824	100%	eos headen citizen
8	306997	PADELLA,JIM HARRY	5	2929	1825	7/18/2008	6/30/2003	6/27/2008	6/28/2008	1,824	100%	eos headen citizen
9	326259	ROBINSON,STEPHAN	5	3658	1460	11/4/2005	2/10/2005	12/15/2008	2/9/2009	1,464	96%	parole
10	297007	HARRISON,PALL	5	4745	2555	2/14/2008	12/21/2001	7/29/2008	12/19/2008	2,412	94%	parole
11	57999	CANCI,RICHARD	5	3658	1825	3/28/2004	9/14/2003	5/27/2008	9/12/2008	1,717	94%	parole
12	267655	DONNELLY,MICHAEL	5	2190	2190	6/26/2008	4/10/2003	11/12/2008	4/8/2009	2,043	93%	parole
13	283901	RESTO,FRANKIE	5	4745	2250	1/23/2007	7/31/2006	4/12/2012	9/27/2012	2,082	93%	eos, RREC
14	2											
15	3											
16	3											
17	3											
18	2											
19	2											
20	3											
21	2											
22	3											
23	3											
24	3											
25	3											
26	3											
27	1											
28	3											
29	3											
30	3											
31	3											
32	3											
33	3											
34	3											
35	3											
36	332067	LEE,DAVID	5	3658	1460	6/24/2005	6/24/2005	5/29/2008	6/23/2009	1,463	73%	0
37	276654	HARRIS,JAMES C	5	6578	1825	11/18/2005	5/25/2003	1/19/2007	5/23/2008	1,825	73%	0
38	325118	VILLERAS,JAFEL	5	2929	1260	2/4/2005	9/28/2004	3/22/2007	3/11/2008	365	72%	0
39	348087	ARCELLUS	5	2929	730	2/3/2007	2/9/2007	7/14/2008	2/8/2009	316	71%	0
40	343504	PAAR,JEANALYN	5	3658	1095	6/30/2006	8/30/2006	6/21/2008	8/29/2009	722	66%	0
41	323818	HANSON,EROME	5	2333	1460	7/18/2005	8/16/2004	2/19/2007	8/15/2008	917	63%	0
42	349906	MOHE,JOHN	5	4988	900	12/28/2007	4/26/2007	10/18/2008	10/12/2009	388	59%	0

