



CONNECTICUT DEPARTMENT OF PUBLIC HEALTH
STATE WIC PROGRAM



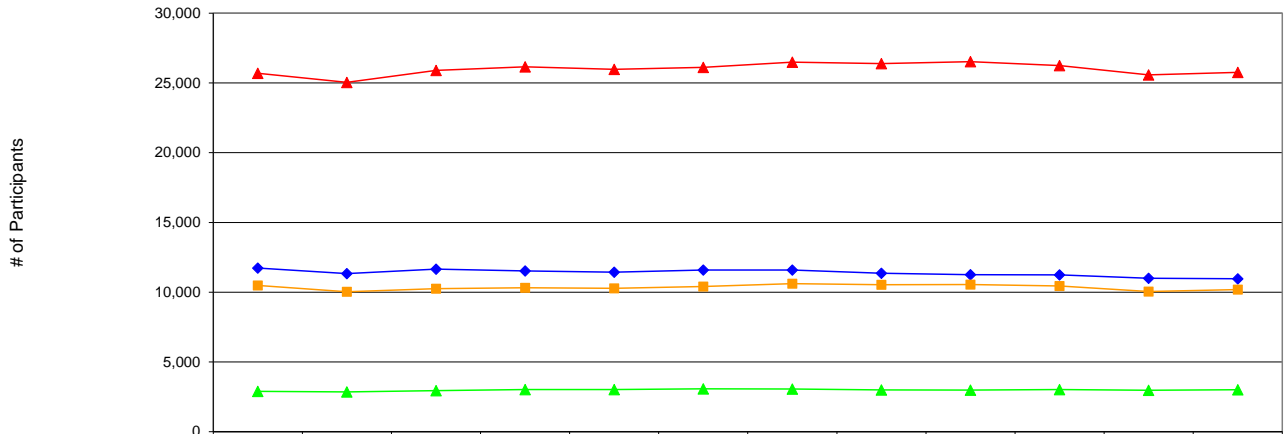
CONNECTICUT WIC PROGRAM - STATEWIDE TOTALS
Monthly WIC Participation by Race / Ethnicity
& Participant Category, 2015 ^a

MONTHLY PARTICIPATION BY RACE / ETHNICITY & CATEGORY	QUARTER 1			QUARTER 2			QUARTER 3			QUARTER 4			AVERAGE	%
	Jan	Feb	Mar	Apr	May	Jun	Jul	Aug	Sep	Oct	Nov	Dec		
HISPANIC	25,695	25,043	25,904	26,153	25,983	26,114	26,486	26,387	26,526	26,248	25,581	25,760	25,990	51.2%
Women	5,215	5,096	5,362	5,432	5,329	5,378	5,435	5,398	5,408	5,377	5,207	5,278	5,326	20.5%
- Pregnant	2,567	2,486	2,695	2,714	2,661	2,681	2,714	2,680	2,677	2,598	2,463	2,469	2,617	49.1%
- Breastfeeding (BF)	1,398	1,398	1,421	1,456	1,385	1,405	1,411	1,428	1,427	1,471	1,448	1,513	1,430	26.8%
- Fully breastfeeding	354	350	354	374	387	396	380	373	376	362	366	361	369	25.8%
- Partially breastfeeding	1,044	1,048	1,067	1,082	998	1,009	1,031	1,055	1,051	1,109	1,082	1,152	1,061	74.2%
- Postpartum (not BF)	1,250	1,212	1,246	1,262	1,283	1,292	1,310	1,290	1,304	1,308	1,296	1,296	1,279	24.0%
Infants	6,167	6,111	6,313	6,401	6,393	6,448	6,526	6,463	6,514	6,483	6,326	6,377	6,377	24.5%
- Fully breastfed	391	379	390	403	414	420	425	394	419	385	390	383	399	6.3%
- Partially breastfed	1,738	1,768	1,804	1,789	1,727	1,763	1,801	1,817	1,830	1,851	1,785	1,812	1,790	28.1%
- Formula fed only	4,038	3,964	4,119	4,209	4,252	4,265	4,300	4,252	4,265	4,247	4,151	4,182	4,187	65.7%
Children	14,313	13,836	14,229	14,320	14,261	14,288	14,525	14,526	14,604	14,388	14,048	14,105	14,287	55.0%
NON-HISPANIC WHITE	11,732	11,336	11,653	11,531	11,432	11,592	11,590	11,365	11,261	11,244	10,998	10,966	11,392	22.5%
Women	2,998	2,867	2,971	2,931	2,900	2,983	2,977	2,852	2,789	2,780	2,719	2,697	2,872	25.2%
- Pregnant	1,283	1,229	1,283	1,301	1,287	1,323	1,313	1,250	1,234	1,194	1,143	1,105	1,245	43.4%
- Breastfeeding (BF)	809	806	831	819	798	805	793	782	763	790	789	781	797	27.8%
- Fully breastfeeding	424	440	422	415	392	420	402	398	401	416	436	413	415	52.0%
- Partially breastfeeding	385	366	409	404	406	385	391	384	362	374	353	368	382	48.0%
- Postpartum (not BF)	906	832	857	811	815	855	871	820	792	796	787	811	829	28.9%
Infants	3,065	2,992	3,075	3,037	3,010	3,027	2,996	2,910	2,898	2,903	2,858	2,830	2,967	26.0%
- Fully breastfed	366	361	357	350	339	342	326	332	333	347	353	333	345	11.6%
- Partially breastfed	546	523	560	540	539	543	535	531	523	533	501	533	534	18.0%
- Formula fed only	2,153	2,108	2,158	2,147	2,132	2,142	2,135	2,047	2,042	2,023	2,004	1,964	2,088	70.4%
Children	5,669	5,477	5,607	5,563	5,522	5,582	5,617	5,603	5,574	5,561	5,421	5,439	5,553	48.7%
NON-HISPANIC BLACK	10,483	10,032	10,254	10,318	10,277	10,413	10,614	10,541	10,546	10,442	10,053	10,192	10,347	20.4%
Women	2,317	2,239	2,286	2,280	2,251	2,295	2,329	2,287	2,284	2,290	2,185	2,227	2,273	22.0%
- Pregnant	1,049	984	1,036	1,044	1,050	1,107	1,137	1,129	1,135	1,129	1,060	1,064	1,077	47.4%
- Breastfeeding (BF)	619	632	625	629	595	595	606	602	593	595	561	574	602	26.5%
- Fully breastfeeding	155	152	164	158	155	160	164	160	146	132	117	120	149	24.7%
- Partially breastfeeding	464	480	461	471	440	435	442	442	447	463	444	454	454	75.3%
- Postpartum (not BF)	649	623	625	607	606	593	586	556	556	566	564	589	593	26.1%
Infants	2,799	2,696	2,787	2,804	2,767	2,779	2,767	2,702	2,682	2,648	2,572	2,618	2,718	26.3%
- Fully breastfed	133	131	131	130	125	131	135	128	129	125	115	107	127	4.7%
- Partially breastfed	743	743	752	769	763	782	774	776	775	771	735	743	761	28.0%
- Formula fed only	1,923	1,822	1,904	1,905	1,879	1,866	1,858	1,798	1,778	1,752	1,722	1,768	1,831	67.4%
Children	5,367	5,097	5,181	5,234	5,259	5,339	5,518	5,552	5,580	5,504	5,296	5,347	5,356	51.8%
NON-HISPANIC, OTHER RACE(S)	2,889	2,853	2,949	3,017	3,023	3,075	3,058	2,999	2,987	3,026	2,968	3,004	2,987	5.9%
Women	568	562	576	614	605	601	603	580	579	600	561	581	586	19.6%
- Pregnant	244	251	262	279	272	261	275	240	245	245	229	244	254	43.3%
- Breastfeeding (BF)	205	200	201	225	226	228	206	212	199	211	204	201	210	35.8%
- Fully breastfeeding	72	72	72	76	79	74	70	66	60	60	69	63	69	33.1%
- Partially breastfeeding	133	128	129	149	147	154	136	146	139	151	135	138	140	66.9%
- Postpartum (not BF)	119	111	113	110	107	112	122	128	135	144	128	136	122	20.8%
Infants	741	740	783	812	816	839	822	809	810	787	784	804	796	26.6%
- Fully breastfed	80	82	82	90	93	92	91	80	80	82	90	93	86	10.8%
- Partially breastfed	217	219	237	245	235	243	241	239	224	220	221	234	231	29.1%
- Formula fed only	444	439	464	477	488	504	490	490	506	485	473	477	478	60.1%
Children	1,580	1,551	1,590	1,591	1,602	1,635	1,633	1,610	1,598	1,639	1,623	1,619	1,606	53.8%
TOTAL PARTICIPANTS	50,799	49,264	50,760	51,019	50,715	51,194	51,748	51,292	51,320	50,960	49,600	49,922	50,716	100.0%
Women	11,098	10,764	11,195	11,257	11,085	11,257	11,344	11,117	11,060	11,047	10,672	10,783	11,057	21.8%
- Pregnant	5,143	4,950	5,276	5,338	5,270	5,372	5,439	5,299	5,291	5,166	4,895	4,882	5,193	47.0%
- Breastfeeding (BF)	3,031	3,036	3,078	3,129	3,004	3,033	3,016	3,024	2,982	3,067	3,002	3,069	3,039	27.5%
- Fully breastfeeding	1,005	1,014	1,012	1,023	1,013	1,050	1,016	997	983	970	988	957	1,002	33.0%
- Partially breastfeeding	2,026	2,022	2,066	2,106	1,991	1,983	2,000	2,027	1,999	2,097	2,014	2,112	2,037	67.0%
- Postpartum (not BF)	2,924	2,778	2,841	2,790	2,811	2,852	2,889	2,794	2,787	2,814	2,775	2,832	2,824	25.5%
Infants	12,772	12,539	12,958	13,054	12,986	13,093	13,111	12,884	12,904	12,821	12,540	12,629	12,858	25.4%
- Fully breastfed	970	953	960	973	971	985	977	934	961	939	948	916	957	7.4%
- Partially breastfed	3,244	3,253	3,353	3,343	3,264	3,331	3,351	3,363	3,352	3,375	3,242	3,322	3,316	25.8%
- Formula fed only	8,558	8,333	8,645	8,738	8,751	8,777	8,783	8,587	8,591	8,507	8,350	8,391	8,584	66.8%
Children	26,929	25,961	26,607	26,708	26,644	26,844	27,293	27,291	27,356	27,092	26,388	26,510	26,802	52.8%
UNKNOWN RACE OR ETHNICITY	0	0	0	0	0	0	0	0	0	0	0	0	0	0
GRAND TOTAL	50,799	49,264	50,760	51,019	50,715	51,194	51,748	51,292	51,320	50,960	49,600	49,922	50,716	

Cont... →

^a Data source: Statewide WIC Information System (SWIS),
Racial / Ethnic Participation (WICP3002).

Connecticut WIC
 Monthly Participation by Race / Ethnicity
 2015



	Jan	Feb	Mar	Apr	May	Jun	Jul	Aug	Sep	Oct	Nov	Dec
▲ HISPANIC	25,695	25,043	25,904	26,153	25,983	26,114	26,486	26,387	26,526	26,248	25,581	25,760
◆ NON-HISPANIC WHITE	11,732	11,336	11,653	11,531	11,432	11,592	11,590	11,365	11,261	11,244	10,998	10,966
■ NON-HISPANIC BLACK	10,483	10,032	10,254	10,318	10,277	10,413	10,614	10,541	10,546	10,442	10,053	10,192
▲ NON-HISPANIC, OTHER RACE(S)	2,889	2,853	2,949	3,017	3,023	3,075	3,058	2,999	2,987	3,026	2,968	3,004

^a Data source: Statewide WIC Information System (SWIS),
 Racial / Ethnic Participation (WICP3002).