

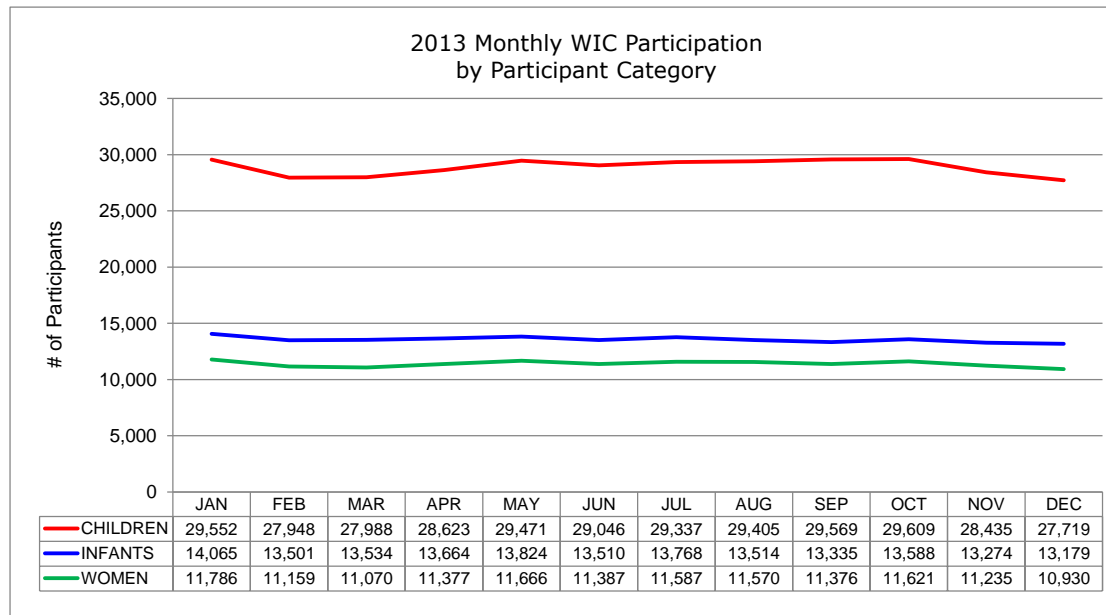
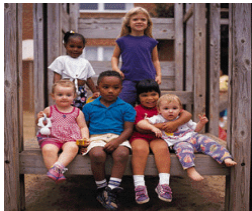


CONNECTICUT DEPARTMENT OF PUBLIC HEALTH
STATE WIC PROGRAM

2013 Monthly WIC Participation
by Participant Category ^{a, b}



STATEWIDE TOTALS	QUARTER 1			QUARTER 2			QUARTER 3			QUARTER 4			MONTHLY AVERAGE	%
	JAN	FEB	MAR	APR	MAY	JUN	JUL	AUG	SEP	OCT	NOV	DEC		
WOMEN	11,786	11,159	11,070	11,377	11,666	11,387	11,587	11,570	11,376	11,621	11,235	10,930	11,397	21.2%
- Pregnant	5,842	5,562	5,518	5,746	5,927	5,778	5,908	6,020	5,819	5,847	5,476	5,274	5,726	50.2%
- Breastfeeding:	2,776	2,691	2,696	2,723	2,762	2,734	2,804	2,710	2,677	2,799	2,843	2,808	2,752	24.1%
- Fully breastfeeding	1,100	1,071	1,084	1,101	1,122	1,114	1,120	1,085	1,045	1,062	1,046	987	1,078	39.2%
- Partially breastfeeding	1,676	1,620	1,612	1,622	1,640	1,620	1,684	1,625	1,632	1,737	1,797	1,821	1,674	60.8%
- Postpartum	3,168	2,906	2,856	2,908	2,977	2,875	2,875	2,840	2,880	2,975	2,916	2,848	2,919	25.6%
INFANTS	14,065	13,501	13,534	13,664	13,824	13,510	13,768	13,514	13,335	13,588	13,274	13,179	13,563	25.2%
- Breastfed:	4,089	3,865	3,885	3,940	3,979	3,933	4,027	3,999	3,990	4,185	4,129	4,118	4,012	29.6%
- Fully breastfed	1,019	984	1,033	1,040	1,075	1,043	1,052	994	926	943	920	888	993	24.8%
- Partially breastfed	3,070	2,881	2,852	2,900	2,904	2,890	2,975	3,005	3,064	3,242	3,209	3,230	3,019	75.2%
- Formula Fed	9,976	9,636	9,649	9,724	9,845	9,577	9,741	9,515	9,345	9,403	9,145	9,061	9,551	70.4%
CHILDREN	29,552	27,948	27,988	28,623	29,471	29,046	29,337	29,405	29,569	29,609	28,435	27,719	28,892	53.7%
GRAND TOTALS	55,403	52,608	52,592	53,664	54,961	53,943	54,692	54,489	54,280	54,818	52,944	51,828	53,852	100.0%



^a Data source: Statewide WIC Information System (SWIS), Participation Report - WICP3001 / 301T, excluding Unknowns.