



CONNECTICUT DEPARTMENT OF PUBLIC HEALTH
STATE WIC PROGRAM



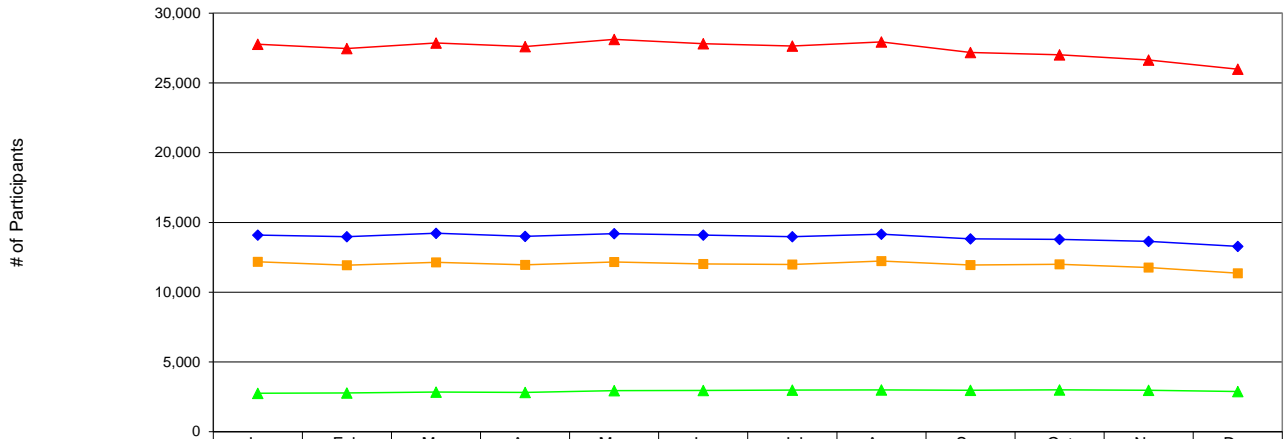
CONNECTICUT WIC PROGRAM ~ STATEWIDE TOTALS
Monthly WIC Participation by Race / Ethnicity
& Participant Category, 2012 ^a

MONTHLY PARTICIPATION BY RACE / ETHNICITY & CATEGORY	QUARTER 1			QUARTER 2			QUARTER 3			QUARTER 4			AVERAGE	%
	Jan	Feb	Mar	Apr	May	Jun	Jul	Aug	Sep	Oct	Nov	Dec		
HISPANIC	27,780	27,466	27,868	27,614	28,125	27,810	27,644	27,941	27,184	27,015	26,641	25,987	27,423	48.8%
Women	5,451	5,407	5,464	5,424	5,529	5,452	5,363	5,455	5,259	5,205	5,197	5,031	5,353	19.5%
- Pregnant	2,834	2,866	2,931	2,914	2,982	2,954	2,949	2,982	2,810	2,822	2,726	2,626	2,866	53.5%
- Breastfeeding (BF)	1,216	1,210	1,212	1,209	1,262	1,234	1,212	1,214	1,207	1,186	1,184	1,161	1,209	22.6%
- Fully breastfeeding	376	382	374	381	393	380	385	381	389	361	355	364	377	31.2%
- Partially breastfeeding	840	828	838	828	869	854	827	833	818	825	829	797	832	68.8%
- Postpartum (not BF)	1,401	1,331	1,321	1,301	1,285	1,264	1,202	1,259	1,242	1,197	1,287	1,244	1,278	23.9%
Infants	6,692	6,600	6,703	6,673	6,746	6,591	6,510	6,589	6,385	6,367	6,402	6,283	6,545	23.9%
- Fully breastfed	352	362	356	336	346	366	366	380	362	341	369	352	357	5.5%
- Partially breastfed	1,585	1,597	1,590	1,603	1,636	1,579	1,573	1,628	1,570	1,596	1,545	1,541	1,587	24.2%
- Formula fed only	4,755	4,641	4,757	4,734	4,764	4,646	4,571	4,581	4,453	4,430	4,488	4,390	4,601	70.3%
Children	15,637	15,459	15,701	15,517	15,850	15,767	15,771	15,897	15,540	15,443	15,042	14,673	15,525	56.6%
NON-HISPANIC WHITE	14,089	13,980	14,228	14,011	14,195	14,095	13,982	14,164	13,824	13,781	13,645	13,286	13,940	24.8%
Women	3,605	3,565	3,640	3,582	3,630	3,638	3,570	3,601	3,497	3,492	3,421	3,283	3,544	25.4%
- Pregnant	1,747	1,745	1,802	1,791	1,828	1,799	1,751	1,745	1,633	1,609	1,557	1,497	1,709	48.2%
- Breastfeeding (BF)	788	744	764	747	755	773	731	767	751	775	787	761	762	21.5%
- Fully breastfeeding	451	439	452	436	436	433	400	447	434	444	461	435	439	57.6%
- Partially breastfeeding	337	305	312	311	319	340	331	320	317	331	326	326	323	42.4%
- Postpartum (not BF)	1,070	1,076	1,074	1,044	1,047	1,066	1,088	1,089	1,113	1,108	1,077	1,025	1,073	30.3%
Infants	3,645	3,590	3,628	3,582	3,662	3,676	3,694	3,723	3,634	3,673	3,653	3,603	3,647	26.2%
- Fully breastfed	400	400	383	373	379	370	349	377	377	380	387	386	380	10.4%
- Partially breastfed	571	516	522	514	533	531	514	516	501	520	522	522	524	14.4%
- Formula fed only	2,674	2,674	2,723	2,695	2,750	2,775	2,831	2,830	2,756	2,773	2,744	2,695	2,743	75.2%
Children	6,839	6,825	6,960	6,847	6,903	6,781	6,718	6,840	6,693	6,616	6,571	6,400	6,749	48.4%
NON-HISPANIC BLACK	12,178	11,931	12,138	11,967	12,168	12,025	11,992	12,234	11,947	11,996	11,776	11,365	11,976	21.3%
Women	2,522	2,485	2,544	2,505	2,579	2,512	2,564	2,634	2,569	2,580	2,567	2,458	2,543	21.2%
- Pregnant	1,317	1,267	1,337	1,334	1,420	1,395	1,432	1,498	1,401	1,378	1,339	1,243	1,363	53.6%
- Breastfeeding (BF)	542	551	570	555	546	535	529	542	552	557	560	564	550	21.6%
- Fully breastfeeding	156	157	160	158	157	161	161	171	195	185	194	190	170	31.0%
- Partially breastfeeding	386	394	410	397	389	374	368	371	357	372	366	374	380	69.0%
- Postpartum (not BF)	663	667	637	616	613	582	603	594	616	645	668	651	630	24.8%
Infants	3,159	3,105	3,162	3,114	3,077	3,002	2,999	3,030	2,981	3,027	2,998	2,882	3,045	25.4%
- Fully breastfed	134	145	152	153	139	129	143	146	155	152	164	137	146	4.8%
- Partially breastfed	680	698	731	692	682	691	670	684	660	701	701	667	688	22.6%
- Formula fed only	2,345	2,262	2,279	2,269	2,256	2,182	2,186	2,200	2,166	2,174	2,133	2,078	2,211	72.6%
Children	6,497	6,341	6,432	6,348	6,512	6,511	6,429	6,570	6,397	6,389	6,211	6,025	6,389	53.3%
NON-HISPANIC, OTHER RACE(S)	2,758	2,779	2,841	2,816	2,947	2,959	2,984	2,993	2,973	3,002	2,970	2,876	2,908	5.2%
Women	536	553	572	568	614	612	617	603	591	614	578	556	585	20.1%
- Pregnant	263	282	282	272	293	291	302	295	292	291	266	236	280	48.0%
- Breastfeeding (BF)	156	165	174	176	191	189	168	172	170	183	195	196	178	30.4%
- Fully breastfeeding	53	57	56	51	62	54	50	64	67	77	80	73	62	34.8%
- Partially breastfeeding	103	108	118	125	129	135	118	108	103	106	115	123	116	65.2%
- Postpartum (not BF)	117	106	116	120	130	132	147	136	129	140	117	124	126	21.6%
Infants	765	751	764	775	805	806	829	852	840	851	867	859	814	28.0%
- Fully breastfed	58	60	63	60	63	72	64	82	79	87	91	89	72	8.9%
- Partially breastfed	197	203	202	217	232	227	222	223	202	208	209	206	212	26.1%
- Formula fed only	510	488	499	498	510	507	543	547	559	556	567	564	529	65.0%
Children	1,457	1,475	1,505	1,473	1,528	1,541	1,538	1,538	1,542	1,537	1,525	1,461	1,510	51.9%
TOTAL PARTICIPANTS	56,805	56,156	57,075	56,408	57,435	56,889	56,602	57,332	55,928	55,794	55,032	53,514	56,248	100.0%
Women	12,114	12,010	12,220	12,079	12,352	12,214	12,114	12,293	11,916	11,891	11,763	11,328	12,025	21.4%
- Pregnant	6,161	6,160	6,352	6,311	6,523	6,439	6,434	6,520	6,136	6,100	5,888	5,602	6,219	51.7%
- Breastfeeding (BF)	2,702	2,670	2,720	2,687	2,754	2,731	2,640	2,695	2,680	2,701	2,726	2,682	2,699	22.4%
- Fully breastfeeding	1,036	1,035	1,042	1,026	1,048	1,028	996	1,063	1,085	1,067	1,090	1,062	1,048	38.8%
- Partially breastfeeding	1,666	1,635	1,678	1,661	1,706	1,703	1,644	1,632	1,595	1,634	1,636	1,620	1,651	61.2%
- Postpartum (not BF)	3,251	3,180	3,148	3,081	3,075	3,044	3,040	3,078	3,100	3,090	3,149	3,044	3,107	25.8%
Infants	14,261	14,046	14,257	14,144	14,290	14,075	14,032	14,194	13,840	13,918	13,920	13,627	14,050	25.0%
- Fully breastfed	944	967	954	922	927	937	922	985	973	960	1,011	964	956	6.8%
- Partially breastfed	3,033	3,014	3,045	3,026	3,083	3,028	2,979	3,051	2,933	3,025	2,977	2,936	3,011	21.4%
- Formula fed only	10,284	10,065	10,258	10,196	10,280	10,110	10,131	10,158	9,934	9,933	9,932	9,727	10,084	71.8%
Children	30,430	30,100	30,598	30,185	30,793	30,600	30,456	30,845	30,172	29,985	29,349	28,559	30,173	53.6%
UNKNOWN RACE OR ETHNICITY	28	12	4	1	3	3	1	0	0	1	0	0	4	
GRAND TOTAL	56,833	56,168	57,079	56,409	57,438	56,892	56,603	57,332	55,928	55,795	55,032	53,514	56,252	

Cont... →

^a Data source: Statewide WIC Information System (SWIS),
Racial / Ethnic Participation (WICP3002).

Connecticut WIC
Monthly Participation by Race / Ethnicity
2012



	Jan	Feb	Mar	Apr	May	Jun	Jul	Aug	Sep	Oct	Nov	Dec
▲ HISPANIC	27,780	27,466	27,868	27,614	28,125	27,810	27,644	27,941	27,184	27,015	26,641	25,987
◆ NON-HISPANIC WHITE	14,089	13,980	14,228	14,011	14,195	14,095	13,982	14,164	13,824	13,781	13,645	13,286
■ NON-HISPANIC BLACK	12,178	11,931	12,138	11,967	12,168	12,025	11,992	12,234	11,947	11,996	11,776	11,365
▲ NON-HISPANIC, OTHER RACE(S)	2,758	2,779	2,841	2,816	2,947	2,959	2,984	2,993	2,973	3,002	2,970	2,876

^a Data source: Statewide WIC Information System (SWIS), Racial / Ethnic Participation (WICP3002).