



CONNECTICUT DEPARTMENT OF PUBLIC HEALTH
STATE WIC PROGRAM



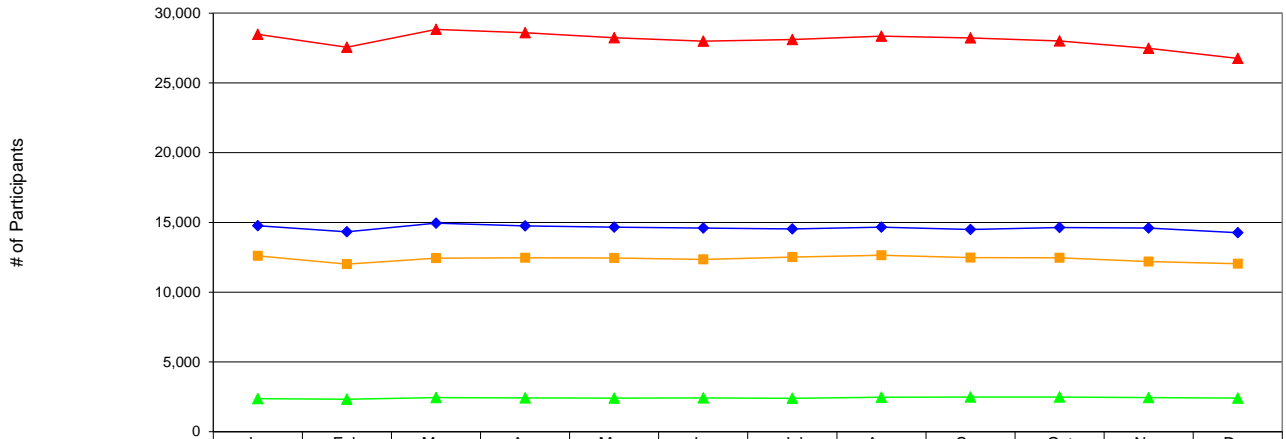
CONNECTICUT WIC PROGRAM - STATEWIDE TOTALS
Monthly WIC Participation by Race / Ethnicity
& Participant Category, 2010^a

MONTHLY PARTICIPATION BY RACE / ETHNICITY & CATEGORY	QUARTER 1			QUARTER 2			QUARTER 3			QUARTER 4			AVERAGE	%
	Jan	Feb	Mar	Apr	May	Jun	Jul	Aug	Sep	Oct	Nov	Dec		
HISPANIC	28,480	27,557	28,839	28,596	28,243	27,999	28,106	28,362	28,233	28,013	27,477	26,761	28,056	48.8%
Women	5,501	5,255	5,558	5,524	5,437	5,431	5,394	5,431	5,385	5,388	5,290	5,076	5,389	19.2%
- Pregnant	2,801	2,711	2,925	2,929	2,928	2,980	2,968	2,979	2,920	2,904	2,866	2,738	2,887	53.6%
- Breastfeeding (BF)	1,301	1,250	1,322	1,300	1,233	1,182	1,181	1,251	1,254	1,254	1,191	1,153	1,239	23.0%
- Unclassified	8	8	15	4	8	13	9	0	0	0	0	0	5	0.4%
- Fully breastfeeding	346	351	357	363	333	292	322	375	356	361	345	325	344	27.7%
- Partially breastfeeding	947	891	950	933	892	877	850	876	898	893	846	828	890	71.8%
- Postpartum (not BF)	1,399	1,294	1,311	1,295	1,276	1,269	1,245	1,201	1,211	1,230	1,233	1,185	1,262	23.4%
Infants	7,041	6,818	7,143	7,004	6,874	6,801	6,795	6,676	6,595	6,558	6,370	6,311	6,749	24.1%
- Unclassified	432	397	392	408	413	381	371	0	0	0	0	0	233	3.4%
- Fully breastfed	336	324	330	351	329	326	335	358	335	352	344	339	338	5.0%
- Partially breastfed	1,153	1,151	1,267	1,219	1,209	1,209	1,223	1,459	1,464	1,435	1,346	1,330	1,289	19.1%
- Formula fed only	5,120	4,946	5,154	5,026	4,923	4,885	4,866	4,859	4,796	4,771	4,680	4,642	4,889	72.4%
Children	15,938	15,484	16,138	16,068	15,932	15,767	15,917	16,255	16,253	16,067	15,817	15,374	15,918	56.7%
NON-HISPANIC WHITE	14,759	14,325	14,951	14,755	14,656	14,603	14,528	14,660	14,501	14,636	14,597	14,265	14,603	25.4%
Women	3,508	3,411	3,604	3,604	3,565	3,618	3,631	3,683	3,652	3,705	3,721	3,618	3,610	24.7%
- Pregnant	1,632	1,626	1,806	1,829	1,834	1,906	1,942	1,911	1,895	1,924	1,883	1,775	1,830	50.7%
- Breastfeeding (BF)	682	655	674	659	688	667	684	779	755	763	765	745	710	19.7%
- Unclassified	5	2	6	0	7	6	6	0	0	0	0	0	3	0.4%
- Fully breastfeeding	416	404	414	407	408	395	393	450	438	453	451	453	424	59.7%
- Partially breastfeeding	261	249	254	252	273	266	285	329	317	310	314	292	284	39.9%
- Postpartum (not BF)	1,194	1,130	1,124	1,116	1,043	1,045	1,005	993	1,002	1,018	1,073	1,098	1,070	29.6%
Infants	3,801	3,736	3,870	3,806	3,769	3,771	3,751	3,637	3,560	3,610	3,631	3,627	3,714	25.4%
- Unclassified	135	134	147	153	141	153	149	0	0	0	0	0	84	2.3%
- Fully breastfed	333	337	362	363	362	361	338	359	358	363	361	357	355	9.5%
- Partially breastfed	296	287	326	313	341	356	407	489	458	466	455	421	385	10.4%
- Formula fed only	3,037	2,978	3,035	2,977	2,925	2,901	2,857	2,789	2,744	2,781	2,815	2,849	2,891	77.8%
Children	7,450	7,178	7,477	7,345	7,322	7,214	7,146	7,340	7,289	7,321	7,245	7,020	7,279	49.8%
NON-HISPANIC BLACK	12,611	12,013	12,444	12,460	12,452	12,353	12,514	12,650	12,476	12,470	12,195	12,046	12,390	21.6%
Women	2,477	2,321	2,425	2,449	2,434	2,471	2,545	2,615	2,603	2,602	2,480	2,435	2,488	20.1%
- Pregnant	1,266	1,178	1,274	1,324	1,310	1,390	1,471	1,495	1,468	1,473	1,392	1,328	1,364	54.8%
- Breastfeeding (BF)	503	479	496	506	488	465	443	474	474	500	487	502	485	19.5%
- Unclassified	3	3	1	1	4	4	4	0	0	0	0	0	2	0.3%
- Fully breastfeeding	139	142	155	164	155	135	128	147	148	160	161	152	149	30.7%
- Partially breastfeeding	361	334	340	341	329	326	311	327	326	340	326	350	334	69.0%
- Postpartum (not BF)	708	664	655	619	636	616	631	646	661	629	601	605	639	25.7%
Infants	3,369	3,192	3,292	3,290	3,290	3,270	3,237	3,145	3,098	3,150	3,114	3,082	3,211	25.9%
- Unclassified	145	140	129	126	120	131	139	0	0	0	0	0	78	2.4%
- Fully breastfed	145	136	149	157	148	144	152	145	147	138	146	123	144	4.5%
- Partially breastfed	459	445	481	475	487	467	454	552	543	576	554	589	507	15.8%
- Formula fed only	2,620	2,471	2,533	2,532	2,535	2,528	2,492	2,448	2,408	2,436	2,414	2,370	2,482	77.3%
Children	6,765	6,500	6,727	6,721	6,728	6,612	6,732	6,890	6,775	6,718	6,601	6,529	6,692	54.0%
NON-HISPANIC, OTHER RACE(S)	2,365	2,328	2,440	2,425	2,413	2,418	2,395	2,478	2,483	2,479	2,448	2,404	2,423	4.2%
Women	452	454	455	455	467	460	464	471	479	481	485	473	466	19.2%
- Pregnant	205	197	198	196	209	225	230	228	221	219	228	219	215	46.0%
- Breastfeeding (BF)	140	146	153	155	147	126	130	150	154	158	146	150	146	31.4%
- Unclassified	0	2	3	0	0	0	1	0	1	0	0	0	1	0.4%
- Fully breastfeeding	52	52	52	56	57	48	47	53	54	53	54	63	53	36.5%
- Partially breastfeeding	88	92	98	99	90	78	82	97	99	105	92	87	92	63.1%
- Postpartum (not BF)	107	111	104	104	111	109	104	93	104	104	111	104	106	22.6%
Infants	657	639	695	688	658	651	635	617	623	634	632	625	646	26.7%
- Unclassified	34	39	35	37	32	28	40	0	0	0	0	0	20	3.2%
- Fully breastfed	53	42	48	54	58	59	60	62	68	74	71	59	59	9.1%
- Partially breastfed	115	112	135	132	108	127	132	164	151	149	134	145	134	20.7%
- Formula fed only	455	446	477	465	460	437	403	391	404	411	427	421	433	67.0%
Children	1,256	1,235	1,290	1,282	1,288	1,307	1,296	1,390	1,381	1,364	1,331	1,306	1,311	54.1%
TOTAL PARTICIPANTS	58,216	56,223	58,676	58,244	57,764	57,387	57,543	58,150	57,693	57,598	56,717	55,476	57,473	100.0%
Women	11,939	11,441	12,043	12,032	11,903	11,985	12,034	12,200	12,119	12,176	11,976	11,602	11,954	20.8%
- Pregnant	5,905	5,712	6,204	6,278	6,281	6,506	6,611	6,613	6,504	6,520	6,369	6,060	6,297	52.7%
- Breastfeeding (BF)	2,626	2,530	2,645	2,620	2,556	2,440	2,438	2,654	2,637	2,675	2,589	2,550	2,580	21.6%
- Unclassified	16	15	25	5	19	23	20	0	1	0	0	0	10	0.4%
- Fully breastfeeding	953	949	978	990	953	870	890	1,025	996	1,027	1,011	993	970	37.6%
- Partially breastfeeding	1,657	1,566	1,642	1,625	1,584	1,547	1,528	1,629	1,640	1,648	1,578	1,557	1,600	62.0%
- Postpartum (not BF)	3,408	3,199	3,194	3,134	3,066	3,039	2,985	2,933	2,978	2,981	3,018	2,992	3,077	25.7%
Infants	14,868	14,385	15,000	14,792	14,591	14,495	14,418	14,075	13,876	13,952	13,747	13,645	14,320	24.9%
- Unclassified	746	710	703	724	706	693	699	0	0	0	0	0	415	2.9%
- Fully breastfed	867	839	889	925	897	890	885	924	908	927	922	878	896	6.3%
- Partially breastfed	2,023	1,995	2,209	2,140	2,145	2,160	2,216	2,664	2,616	2,626	2,489	2,485	2,314	16.2%
- Formula fed only	11,232	10,841	11,199	11,003	10,843	10,752	10,618	10,487	10,352	10,399	10,336	10,282	10,695	74.7%
Children	31,409	30,397	31,632	31,416	31,270	30,900	31,091	31,875	31,698	31,470	30,994	30,229	31,198	54.3%
UNKNOWN RACE OR ETHNICITY	1	0	1	4	0	7	0	117	114	110	108	111	48	
GRAND TOTAL	58,217	56,223	58,676	58,244	57,764	57,387	57,543	58,267	57,807	57,708	56,825	55,587	57,521	

Cont... →

^a Data source: Statewide WIC Information System (SWIS), Racial / Ethnic Participation (WICP3002).

Connecticut WIC
 Monthly Participation by Race / Ethnicity
 2010



	Jan	Feb	Mar	Apr	May	Jun	Jul	Aug	Sep	Oct	Nov	Dec
▲ HISPANIC	28,480	27,557	28,839	28,596	28,243	27,999	28,106	28,362	28,233	28,013	27,477	26,761
◆ NON-HISPANIC WHITE	14,759	14,325	14,951	14,755	14,656	14,603	14,528	14,660	14,501	14,636	14,597	14,265
■ NON-HISPANIC BLACK	12,611	12,013	12,444	12,460	12,452	12,353	12,514	12,650	12,476	12,470	12,195	12,046
▲ NON-HISPANIC, OTHER RACE(S)	2,365	2,328	2,440	2,425	2,413	2,418	2,395	2,478	2,483	2,479	2,448	2,404

^a Data source: Statewide WIC Information System (SWIS),
 Racial / Ethnic Participation (WICP3002).