

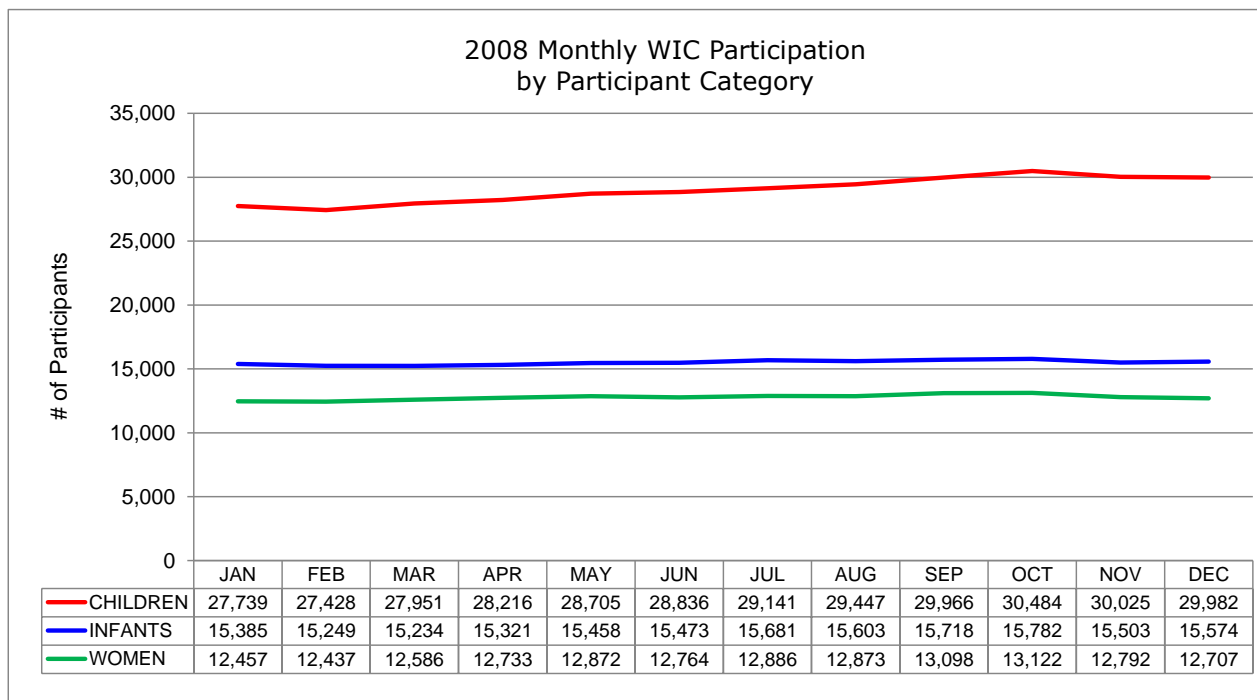
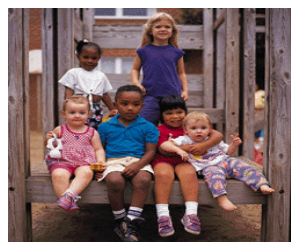


CONNECTICUT DEPARTMENT OF PUBLIC HEALTH  
STATE WIC PROGRAM



2008 Monthly WIC Participation  
by Participant Category <sup>a</sup>

STATEWIDE TOTALS	QUARTER 1			QUARTER 2			QUARTER 3			QUARTER 4			MONTHLY AVERAGE	%
	JAN	FEB	MAR	APR	MAY	JUN	JUL	AUG	SEP	OCT	NOV	DEC		
<b>WOMEN</b>	12,457	12,437	12,586	12,733	12,872	12,764	12,886	12,873	13,098	13,122	12,792	12,707	12,777	22.3%
- Pregnant	6,296	6,348	6,518	6,699	6,751	6,705	6,859	6,712	6,776	6,783	6,488	6,431	6,614	51.8%
- Breastfeeding	2,847	2,809	2,772	2,805	2,869	2,845	2,824	2,891	2,934	3,004	2,983	2,972	2,880	22.5%
- Postpartum	3,314	3,280	3,296	3,229	3,252	3,214	3,203	3,270	3,388	3,335	3,321	3,304	3,284	25.7%
<b>INFANTS</b>	15,385	15,249	15,234	15,321	15,458	15,473	15,681	15,603	15,718	15,782	15,503	15,574	15,498	27.1%
<b>CHILDREN</b>	27,739	27,428	27,951	28,216	28,705	28,836	29,141	29,447	29,966	30,484	30,025	29,982	28,993	50.6%
<b>GRAND TOTALS</b>	55,581	55,114	55,771	56,270	57,035	57,073	57,708	57,923	58,782	59,388	58,320	58,263	57,269	100.0%



<sup>a</sup> Data source: Statewide WIC Information System (SWIS), Participation Report - WICP3001 / 301T.