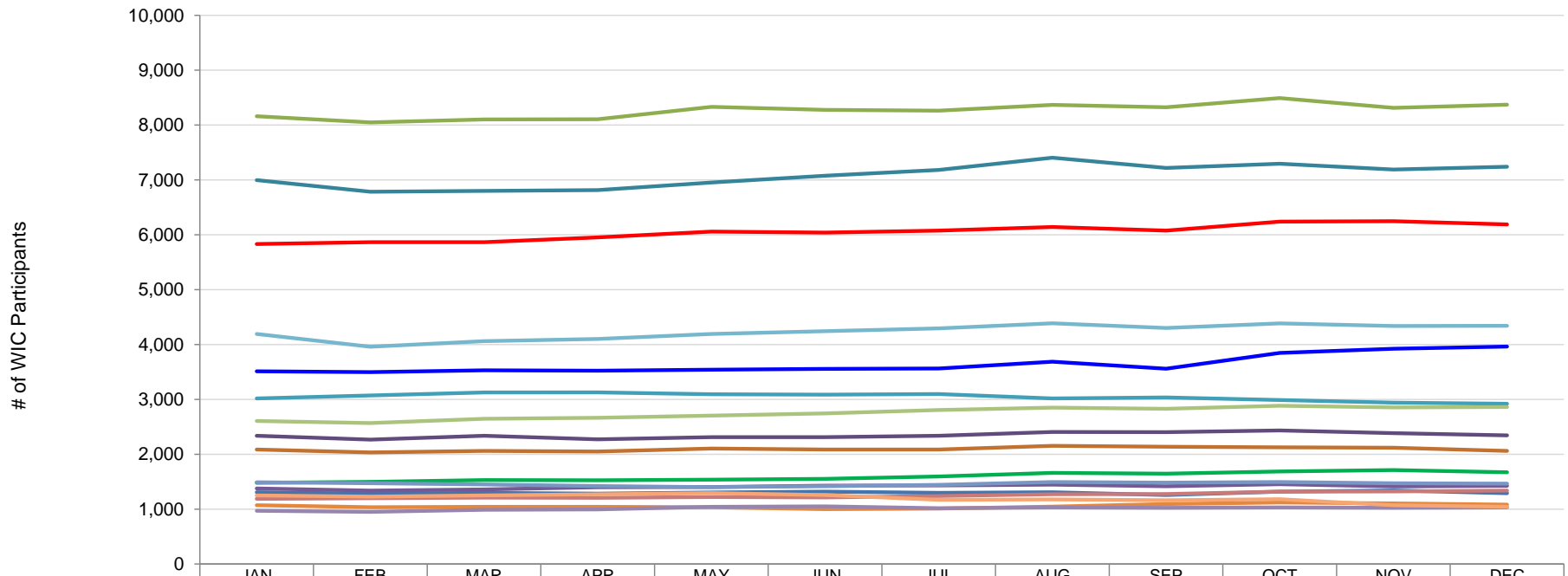




CONNECTICUT DEPARTMENT OF PUBLIC HEALTH
STATE WIC PROGRAM

2001 Monthly WIC Participation
by Local Agency ^a



	JAN	FEB	MAR	APR	MAY	JUN	JUL	AUG	SEP	OCT	NOV	DEC
Bridgeport	5,832	5,867	5,866	5,953	6,060	6,039	6,078	6,141	6,076	6,242	6,248	6,191
Bristol / New Britain	3,513	3,497	3,529	3,523	3,543	3,556	3,564	3,688	3,561	3,847	3,924	3,963
Danbury	1,480	1,497	1,529	1,528	1,539	1,550	1,595	1,660	1,647	1,685	1,712	1,672
East Hartford	2,338	2,267	2,338	2,273	2,312	2,312	2,338	2,408	2,404	2,434	2,386	2,346
Hartford	6,998	6,785	6,800	6,816	6,952	7,076	7,181	7,405	7,218	7,294	7,190	7,241
Meriden	2,088	2,034	2,061	2,049	2,105	2,087	2,086	2,154	2,136	2,128	2,118	2,061
Middletown	1,309	1,282	1,296	1,282	1,306	1,318	1,298	1,307	1,257	1,318	1,341	1,289
New Haven	8,159	8,049	8,103	8,106	8,331	8,277	8,262	8,369	8,325	8,492	8,315	8,373
Norwalk	1,376	1,338	1,358	1,398	1,404	1,427	1,432	1,445	1,418	1,454	1,413	1,424
Norwich / New London	3,017	3,073	3,126	3,128	3,093	3,087	3,098	3,018	3,035	2,990	2,941	2,921
Putnam	1,073	1,036	1,043	1,044	1,035	1,000	1,010	1,045	1,092	1,121	1,106	1,081
Rockville	1,491	1,473	1,450	1,420	1,401	1,417	1,443	1,493	1,482	1,494	1,473	1,465
Seymour	1,187	1,200	1,211	1,205	1,219	1,213	1,238	1,270	1,275	1,320	1,323	1,338
Stamford	2,606	2,569	2,648	2,665	2,703	2,745	2,807	2,852	2,829	2,884	2,853	2,863
Torrington	969	950	989	996	1,044	1,051	1,017	1,030	1,023	1,033	1,023	1,031
Waterbury	4,192	3,960	4,061	4,102	4,194	4,245	4,295	4,387	4,302	4,386	4,338	4,343
Windham	1,250	1,229	1,250	1,273	1,292	1,257	1,169	1,178	1,163	1,181	1,070	1,043

^a Data source: Statewide WIC Information System (SWIS), Participation Report - WICP3001 / 301T.