

HEALTHY HOMES INITIATIVE



Healthy Homes Initiative
Good Health Begins at Home
www.ct.gov/dph/healthyhomes



2017 HEALTHY HOMES SURVEILLANCE REPORT OVERVIEW



Background

- The DPH Healthy Homes Initiative was developed as a comprehensive approach to provide CT residents with a healthy and safe home environment
- The Healthy Homes Initiative seeks to address the physical, chemical and toxic hazards in each home
- These hazards are assessed through healthy homes inspections by trained staff who exam the homes

Healthy Homes Inspections

- Trained staff:
 - Examine the home for environmental problems
 - Make recommendations for correction
 - Make referrals
 - Provide safety equipment
 - Provide education resources

Healthy Homes Assessments

- This report summarizes 1,502 home assessments
- Home assessment performed by:
 - Bridgeport Health Department
 - Milford Health Department
 - New Haven Health Department
 - Torrington Area Health District
 - Uncas Health District
 - Connecticut Children's Healthy Homes Program
- Performed between 9/1/10 and 9/30/16

Assessments and Reassessments Conducted by Agency

	Assessments	Reassessments
Total	1,502	375
Bridgeport Health Department	344	1
Connecticut Children's Healthy Homes Program	855	259
Milford Health Department	62	25
New Haven Health Department	44	0
Quinnipiack Valley Health District	44	17
Torrington Area Health District	97	31
Uncas Health District	56	42

7 Features of a Healthy Home

- **Clean** – to reduce pests, dangerous chemicals and asthma triggers
- **Dry** – to reduce pests and mold
- **Safe** – to reduce injuries
- **Free of Pest** – to prevent disease and reduce asthma triggers
- **Ventilation** – to provide fresh air
- **Free of Chemicals** – to reduce poisonings, injuries and harmful effects
- **Maintained** – to prevent small problems from becoming bigger problems

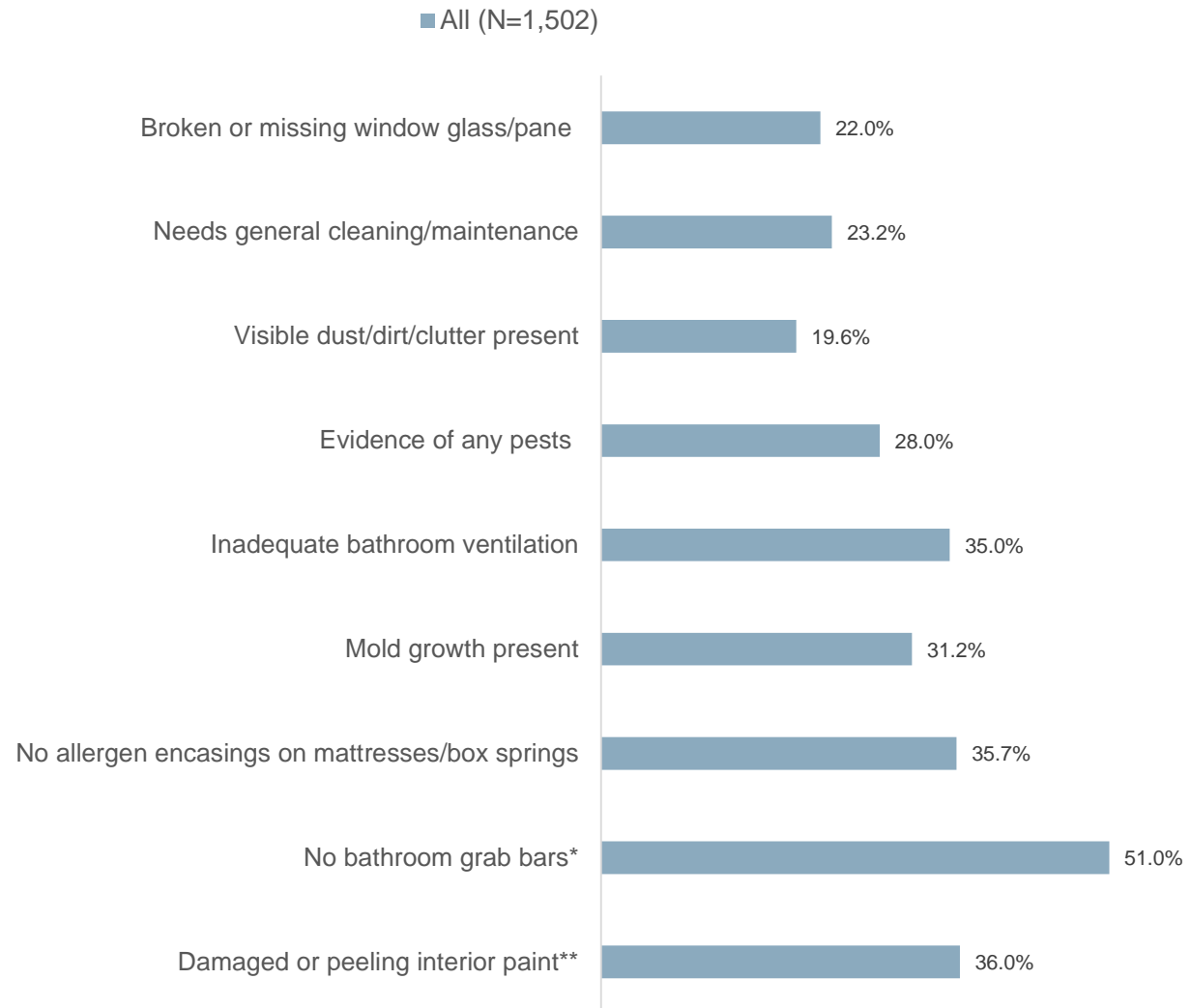
Home Characteristics

- Housing Unit Type
 - 66% were multi-family rental homes
 - 21% were single family owned-occupied homes
 - 8% were single family rental homes
 - 4% were classified as other
- Of the assessed units
 - 70% were built prior to 1950
 - 40% had at least one child under the age of 6
 - 10% had at least one senior resident (over 65)

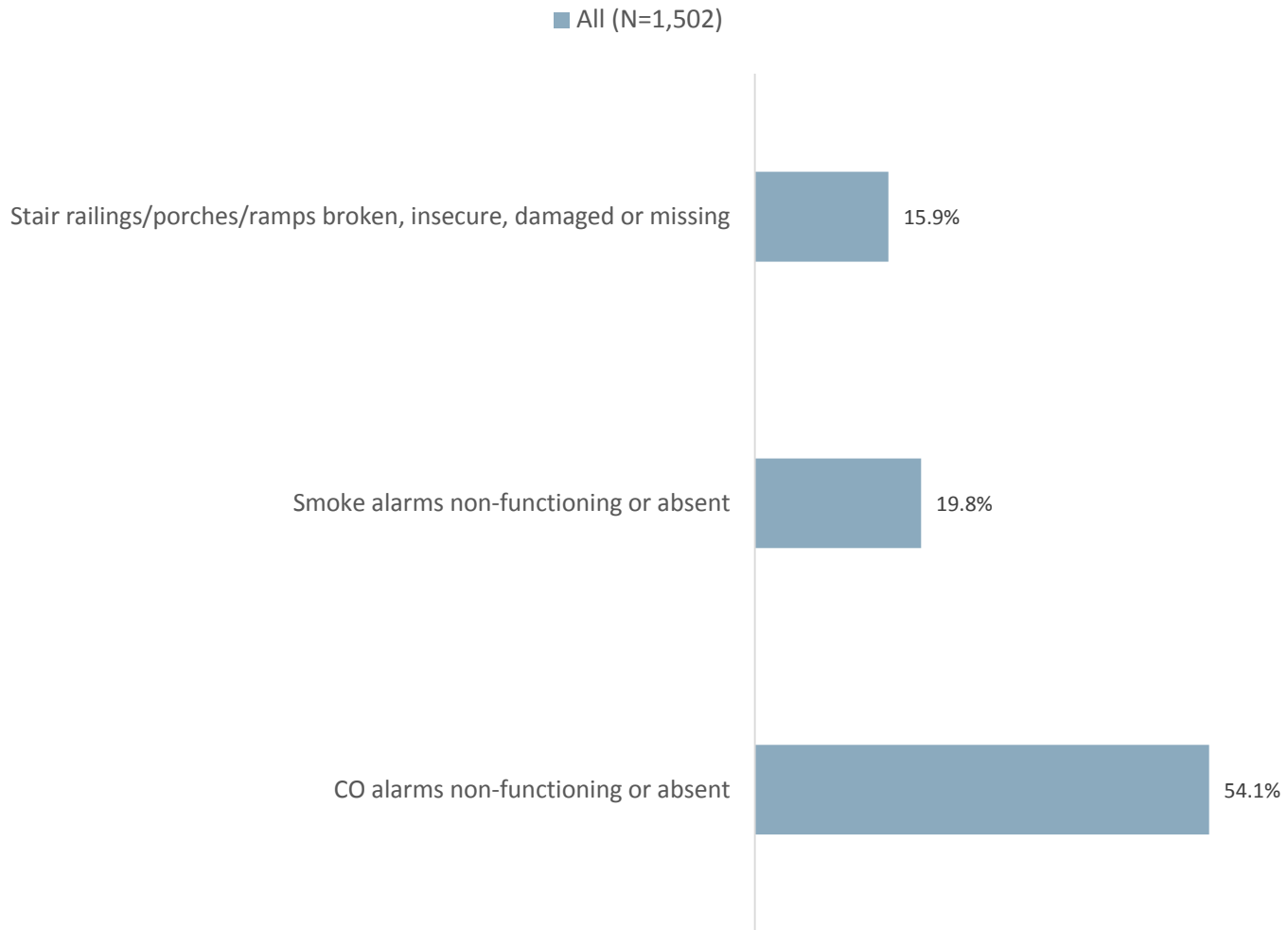
Assessment Findings

- 56 individual deficiencies across 4 categories were examined
 - 4 categories
 - General and exterior conditions
 - Interior conditions
 - General home safety
 - Indoor environmental quality
- At least 1 deficiency was noted in 99% of units
- 20,882 deficiencies were identified
 - Average of 13.9 deficiencies per home
 - Pre-1950 homes = 14.9 deficiencies per home

Prevalence of Deficiencies of Major Concern



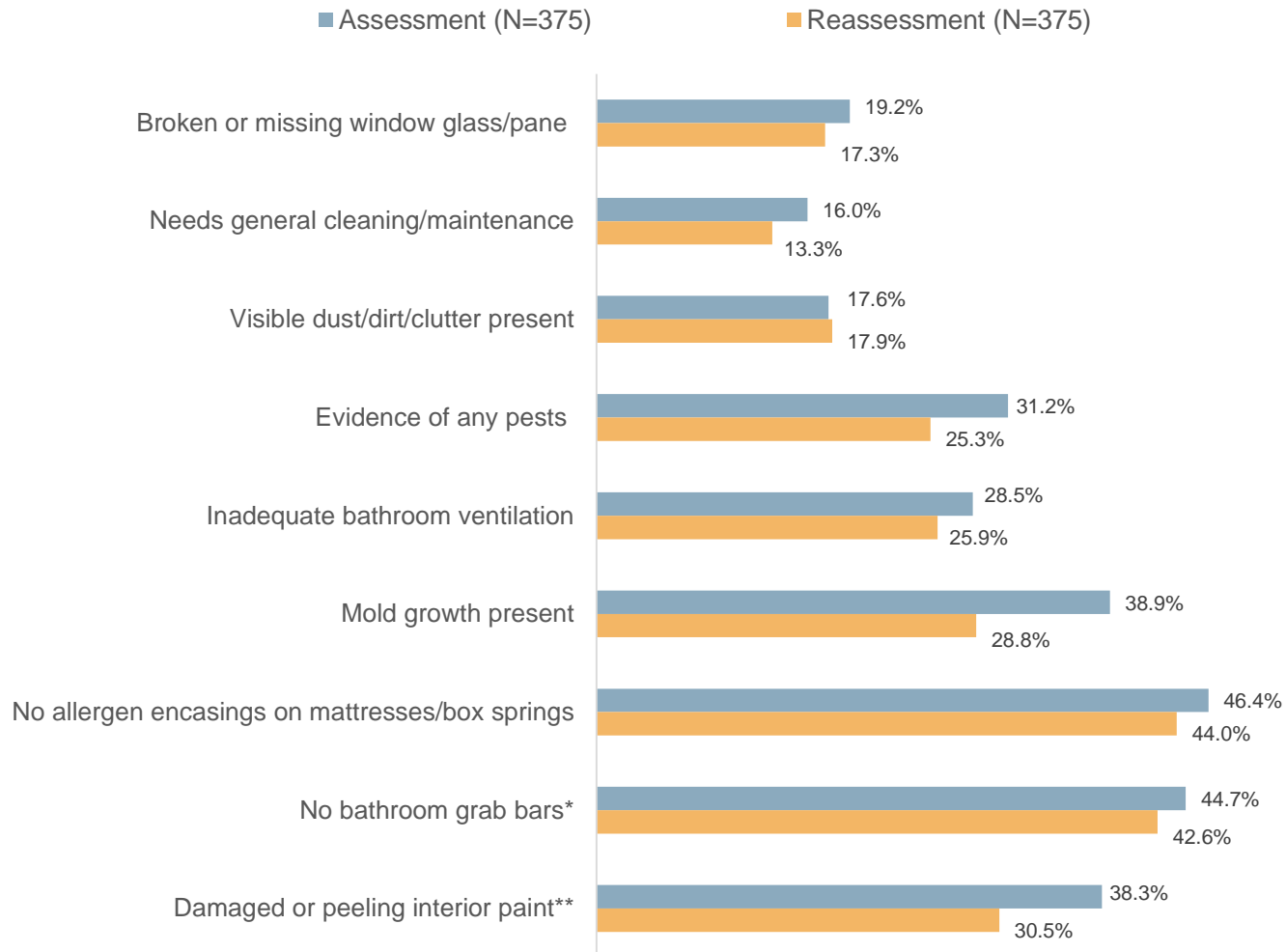
Prevalence of Imminent Hazards



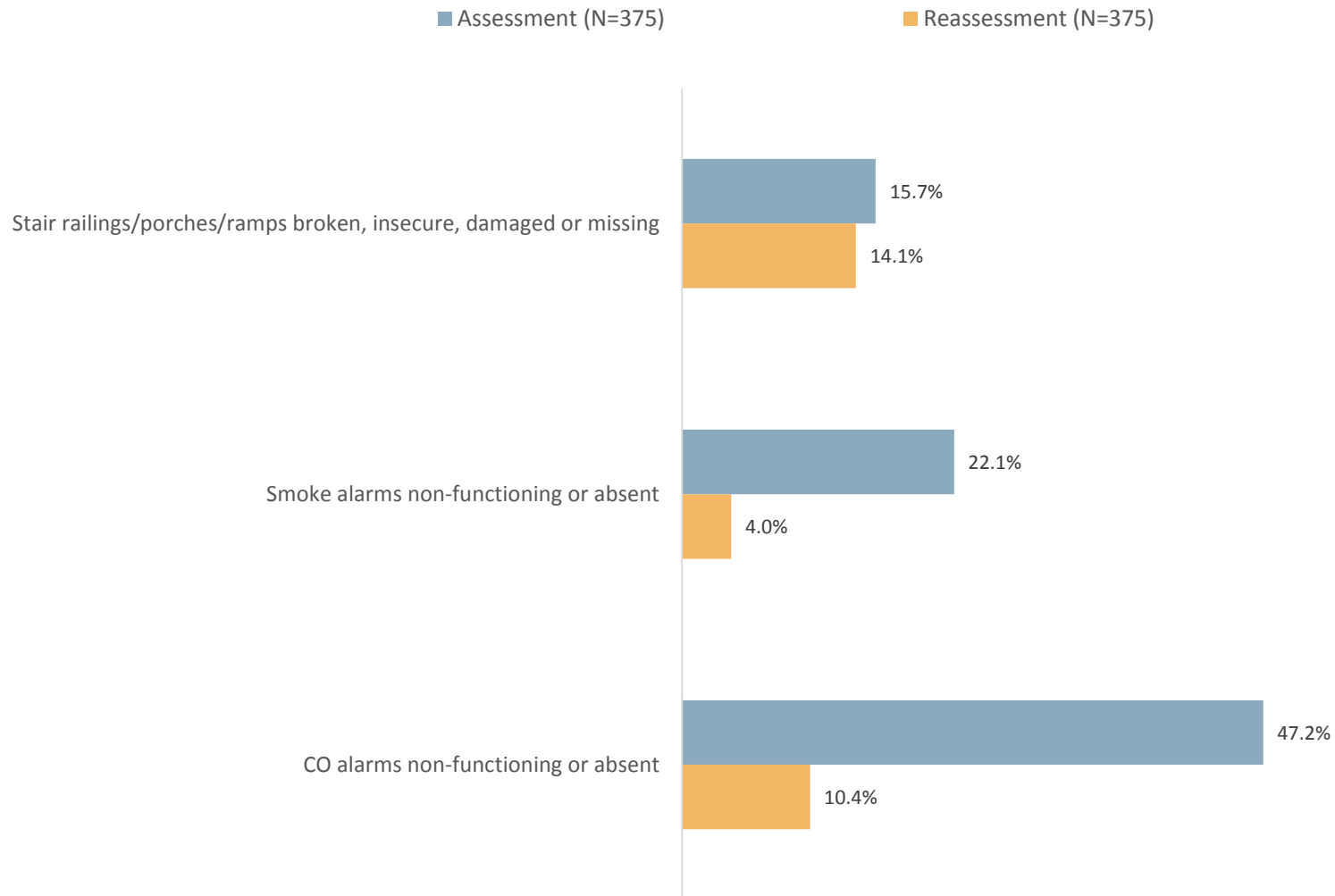
Reassessment Findings

- 375 of the 1,502 units were reassessed
- The prevalence of most deficiencies declined slightly
 - Mold growth decreased from 38.9% to 28.8%
 - Two of the *most concerning* imminent hazards decreased (installed by inspector)
 - missing/non-functioning smoke alarms
 - missing/non-functioning CO alarms

Change in Prevalence of Deficiencies of Major Concern

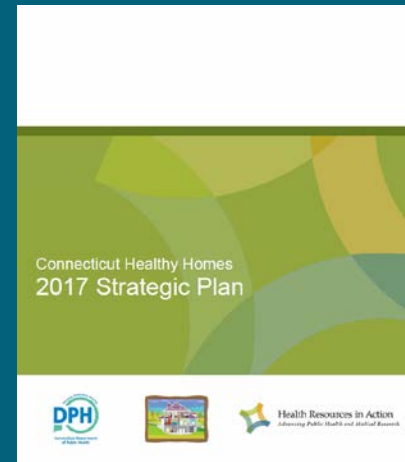


Change in Prevalence of Imminent Hazards



Summary and Recommendations

- Data analysis suggests that hazards are common
- Correction of hazards, at the time of reassessment, is low
 - Concerning = deficiencies that pose a high risk to health
- Additional education and strategies is needed to assist residents and property owners



2017 HEALTHY HOMES STRATEGIC PLAN OVERVIEW

Planning

- DPH hired Health Resources in Action, Inc. (HRiA)
- March 2017: held half day strategic plan discussion
- April 2017: held full day strategic planning session
- April – June 2017: worked to finalize plan
- July 2017: plan finalized

Plan Highlights

- **Vision** – articulates the preferred future we are trying to create
- **Mission** – articulates a central purpose
 - Whom do we serve
 - For what purpose
 - In what way that are unique or distinct
- **Plan Priorities** – key issues that provide a focus
- **Health Equity** – objectives and strategies for disadvantaged or vulnerable populations

Vision

- Every Connecticut resident lives in a healthy and safe home environment.



Mission

- The mission is to expand and maintain statewide partnerships and implement comprehensive policies and coordinated program activities that foster a healthy and safe home environment, reduce housing related health disparities, and improve community health outcomes.



Strategic Plan Priorities

1. Knowledge and Awareness
2. Policies, Guidelines and Practices
3. Workforce

1. Knowledge and Awareness

- **Goal 1:** Promote the understanding and benefits of healthy homes principles to ensure healthy and safe homes
 - *Utilize a variety of communication activities, targeted at the general public and specific stakeholder groups, to raise awareness of the benefits of a healthy home and the ways in which unaddressed hazards in the home environment can cause or exacerbate a number of illnesses and injuries*

Policies, Guidelines and Practices

- **Goal 2:** Develop and implement a uniform, coordinated statewide approach to achieve and maintain a healthy and safe home environment
 - *Emphasizes the importance of addressing hazards in the home environment using a coordinated and systemic approach of adherence to health and safety best practices; adoption of the Connecticut Healthy Homes approach*

3. Workforce

- **Goal 3:** Identify and develop a competent, multi-disciplinary workforce with a holistic approach and practice to achieve healthy homes
 - *Addresses the importance of educating the existing healthy homes workforce on the Connecticut Healthy Homes Approach as well as providing healthy homes training activities for multi-sector stakeholders*

Next Steps

- Internal Partners meeting held on 1/16/18
- External Partners meeting held on 1/23/18
 - Established members of three priority areas
 1. Knowledge and Awareness – **Allison/Chris**
 2. Policies, Guidelines and Practices – **Krista**
 3. Workforce – **Kim**
- Next External Partners meeting: [5/18/18](#)