

Exposure Reconstruction for the Epidemiologic Study

Progress Report
October 2005



Research Team

Full Time

- **Nurtan Esmen** (Professor)
- **Steven Lacey** (Asst. Professor)
- **Kathleen Kennedy** (Project Manager)
- **Roger Hancock** (Sr. Research Specialist)

Co-investigators

- **Peter Scheff** (Professor)
- **Sabri Cetinkunt** (Professor)
- **Irina Dardynskaia** (Assoc. Professor)
- **John Franke** (Asst. Professor)

Research Team

Research Assistants

- **Maria Gutierrez** (Doctoral RA)
- **Raul Espinosa** (Doctoral RA)
- **Tara Alcazar** (Masters RA)
- **Maya Barr** (Masters RA)
- **Sam Bigger** (Masters RA)
- **Julia Lippert** (Masters RA)
- **Jennifer Palmer** (Masters RA)

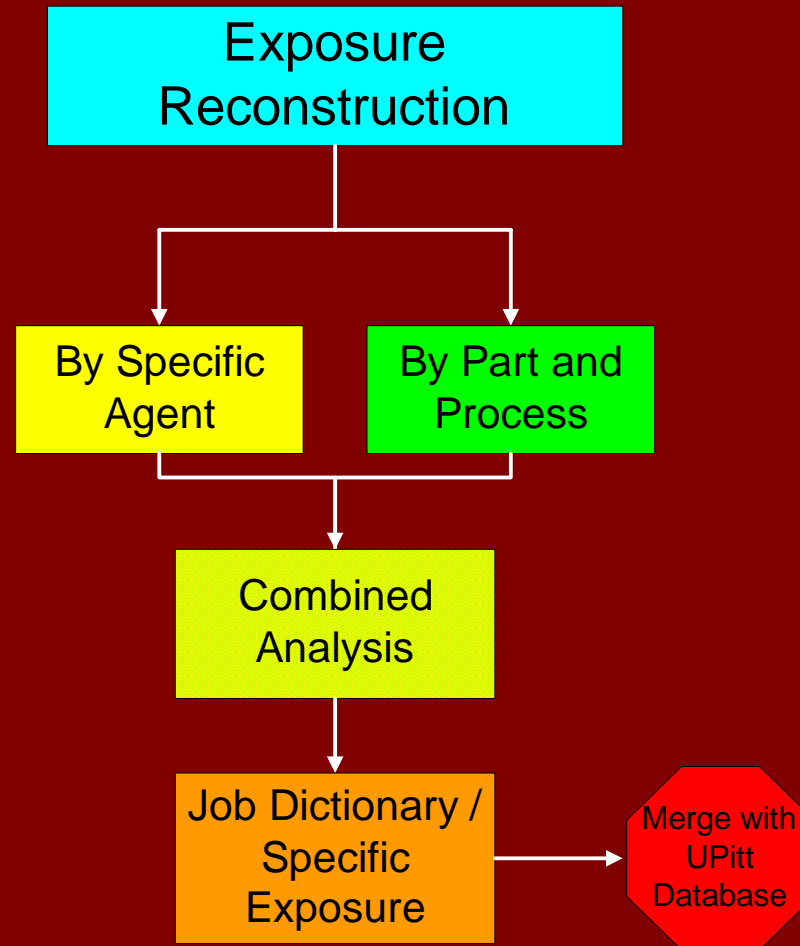
Outline

- General Study Approach
- Study Components
- Study Progress
- Projected Study Timeline

General Study Approach

- Exposure reconstruction:
Characterization of occupational exposures in space and time to inform the epidemiology study

General Study Approach



Study Components: Exposure by Part

- Part Dictionary
 - Includes all “part families” from P&W manufacturing and refurbishment, 1952-2001
 - Examples: hollow fan blades, vanes, shafts
 - Part families determined along with P&W engineers (“part family owners”) and employees

Study Components: Exposure by Process

- Process Dictionary
 - Includes all processes at P&W facilities, 1952-2001
 - Examples: milling, grinding, welding, coatings, NDT
 - Data sources: Summary of Operations, Time Series Studies

Study Components: Exposure by Specific Agent

- 7 primary agents selected based upon extensive toxicological considerations

Ionizing radiation related

- 1) Direct
- 2) Thoriated Nickel / Thoriated Tungsten
- 3) Radioactive Particles

Metalworking fluid

- 4) Water soluble
- 5) Oil based

Other

- 6) Hexavalent Chromium
- 7) Nickel

Study Components: Job Dictionary

- Job Dictionary
 - Contains all possible job titles recorded for workers during the study period
 - Examples: Plater, Aircraft Powerplant Mechanic, Toolmaker, Jig Borer Operator, Foundry Process Operator
 - Data sources: UPitt job history database, P&W hourly job descriptions, union contracts

Study Components: Geographic Information System (GIS) Spatial Database

- Created to determine location of parts, processes, and agents in time and space
- Provides central integration of all data
- Data sources: blueprints, layouts on microfilm and data tape, company space allocation records

Study Components: GIS Spatial Database

- Provides the ability to manage spatially referenced information
- A means to communicate plant-wide properties

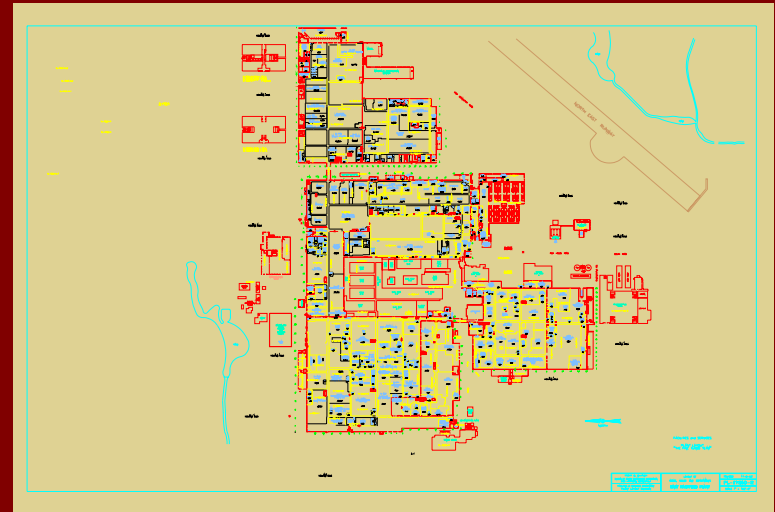


Aerial view of East Hartford

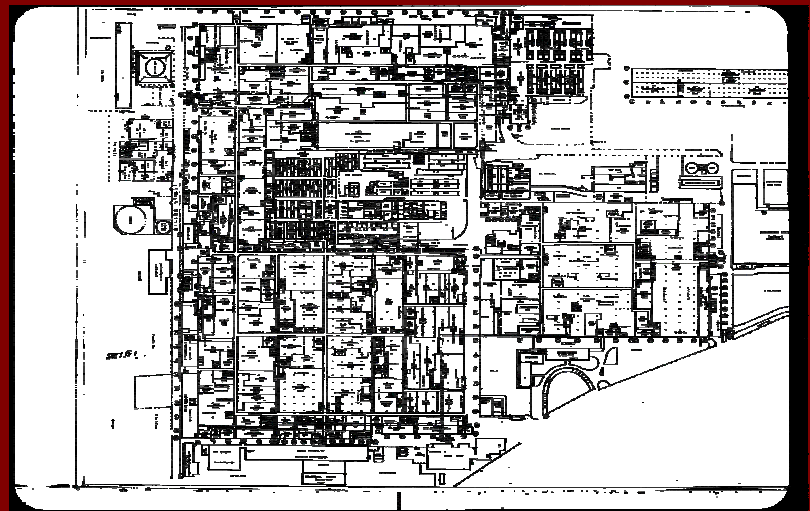
Study Components: GIS Spatial Database

Data sources:

- hand drawn schematics
- CAD drawing files
- company space allocation records



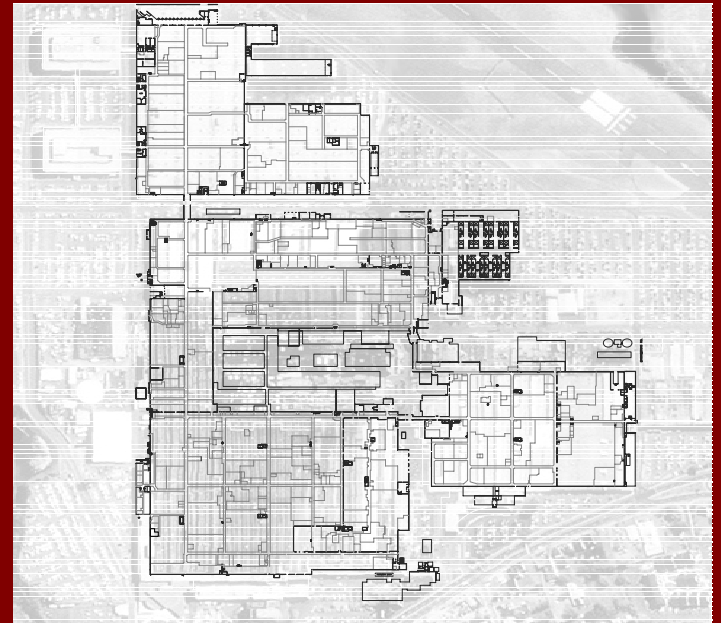
CAD drawing file



Hand drawn schematic

Study Components: GIS Spatial Database

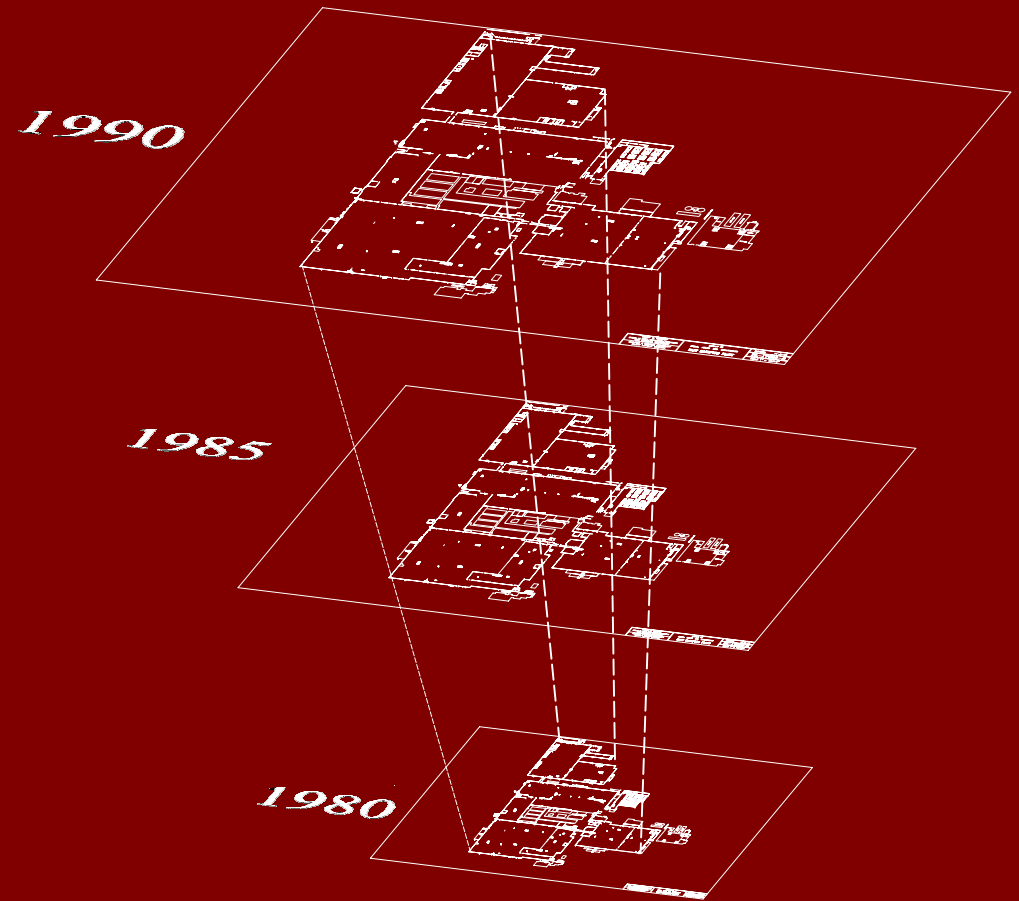
- Allows spatial distribution analysis of parameters of interest such as:
 - departments
 - parts
 - manufacturing processes



East Hartford:
department layout

Study Components: GIS Spatial Database

- Ability to compare spatial distributions of parameters of interest at different points in time



Temporal Analysis

Study Progress

Study Component	Percent Completed
Part Dictionary	75
Process Dictionary	20
Job Dictionary	2
GIS Spatial Database	25
Primary Agents: Hexavalent Chromium	25
Ionizing Radiation (3)	20
MWF (2)	30
Nickel	0
Secondary Agents: MPI	30
Exposure Analysis	5

UIC Projected Time Line – Exposure Reconstruction

Task*	Record Discovery & Location	Part / Process Meetings (part owners)	Data Collection & Entry	Integrated GIS Database Construction	Job Dictionary Reduction	Exposure Determination	Statistical Analyses
Year 1 [OU] (2002-2003)							
Year 2 [UIC] (2003-2004)							
Year 3 (2004-2005)							
Year 4 (2005-2006)							
Year 5 (2006-2007)							
Year 6 (2007-2008)							
Year 7 (2008-2009)							

*One-on-one worker interviews: start contingent upon completion of extended funding agreement.

Acknowledgement

- Study progress has been possible due to the support and assistance of P&W union members, employees, and management.
- We would like to thank all who have assisted us by providing information, data, and documents and greatly appreciate their efforts.