



# Connecticut Department of Public Health

## Coordinated Water Supply Planning Law *Water Utility Coordinating Committee*

Lori J. Mathieu, Public Health Section Chief  
Drinking Water Section

Water Planning Council  
Steering Committee  
Hartford, CT  
November 3, 2015



# Presentation Outline

## Coordinated Water Supply Planning Process

- History – Connecticut's drinking water regulation
- Department of Public Health's Drinking Water Section
- Coordinated Water System Water Supply Process
  - Statutes and Regulations
  - Current Status
  - Future Plan and Timeline

# History – Connecticut's Drinking Water Program



# Public Drinking Water Regulation

- History of Public Health & Drinking Water
- US Public Health Service – 1798 & 1912
- Connecticut Health Department - 1880s & 1917
- US Environmental Protection Agency - 1970
- Safe Drinking Water Act (SDWA) – 1974, '86 & '96
- CT DPH received primacy for the SDWA - 1976



# Public Health Concerns Water Supply 19<sup>th</sup> Century

- Significant public health issue - consuming drinking water
- Waterborne disease
- Gastrointestinal infection
- Typhoid, cholera, dysentery were prevalent
- Microorganisms in 19<sup>th</sup> century,
- Beginning of 20<sup>th</sup> century filtration, build technology, disinfection, sanitary protections at source, protection of raw water quality

# Water Supply Problems – 19<sup>th</sup> century

- Industries need water for production, fire safety, consumption
- Population growth in Cities
- Water supply inadequate
- Unfiltered
- Untreated water
- Unprotected, poor distribution systems
- Unsanitary conditions, waste disposal
- 1878 CT State Agency Public Health oversight created



# Abundant and Safe Water CT Laws – early 20<sup>th</sup> Century

- 25-32 purity and adequacy DPH to assure and responsible for oversight, broad authority
- 25-33 source approval
- 25-34 investigate and order to stop pollution or threat of pollution
- 25-43 no pollution, no one is allowed to pollute
- 19a assure sanitary conditions



# Abundant & Safe Public Drinking Water – late 20<sup>th</sup> Century

- 25-32d water supply plans 1985
- 25-33c to n – Coordinated water system water supply plans
- Updated plans periodically
- 25-32 & 25-37 – Water Company Lands
- 25-32b – Emergency Response
- 25-32 – Certified Operators





# Department of Public Health's Drinking Water Section



# DPH

## Drinking Water Section

- To protect the public health of Connecticut residents and visitors that consume public drinking water in Connecticut
- Responsible for purity and adequacy oversight statewide for all public water systems
- No waterborne disease outbreaks

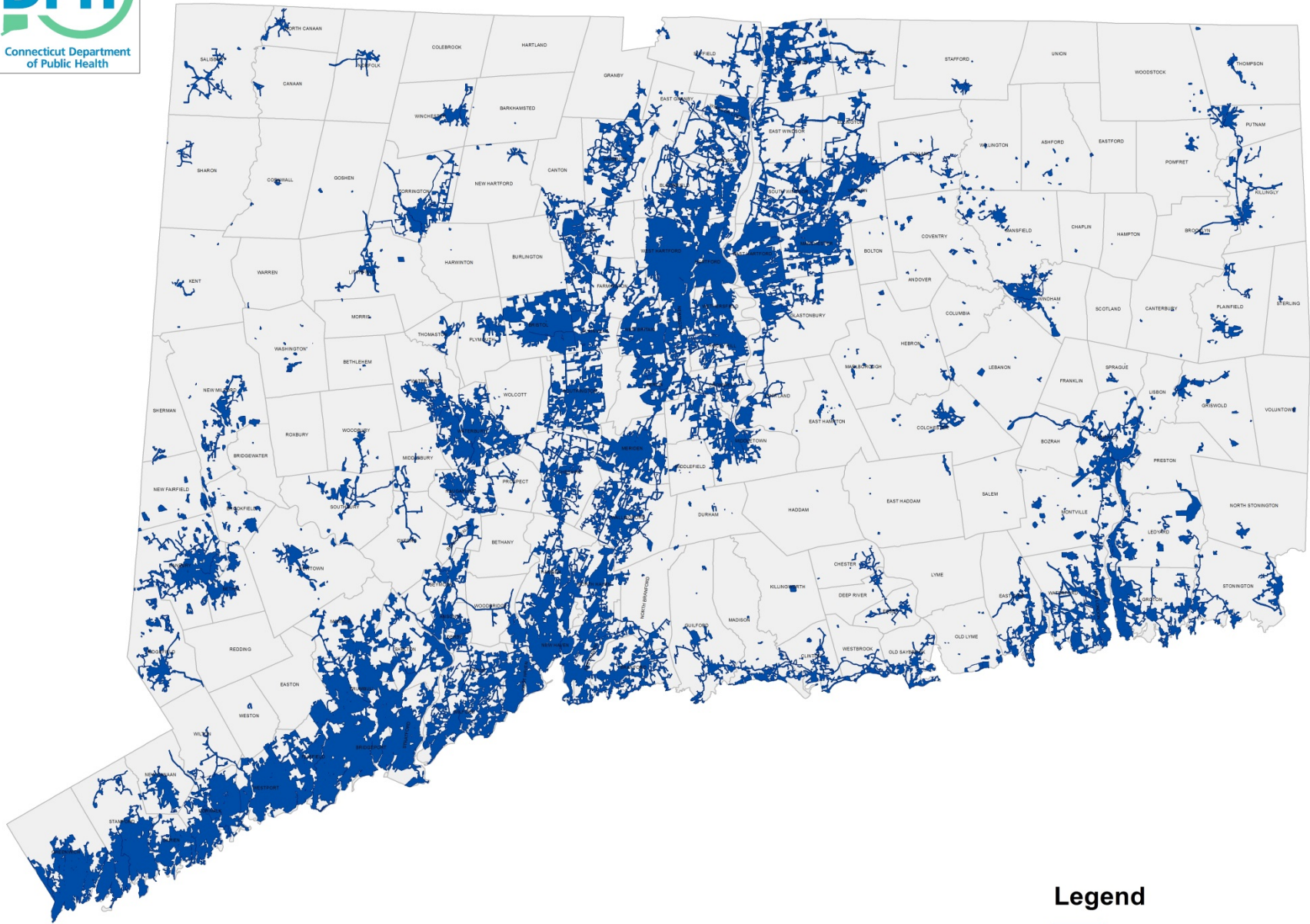


# CT DPH Drinking Water Section Responsibilities

- Regulate 2,550 Public Water Systems
- 2.8 million CT residents served – 3.5 million total population
- 550 community systems
- 2,000 non-community systems
- 150 reservoir systems, over 4,000 ground water sources
- Largest number of systems in New England, considered a medium size state by EPA

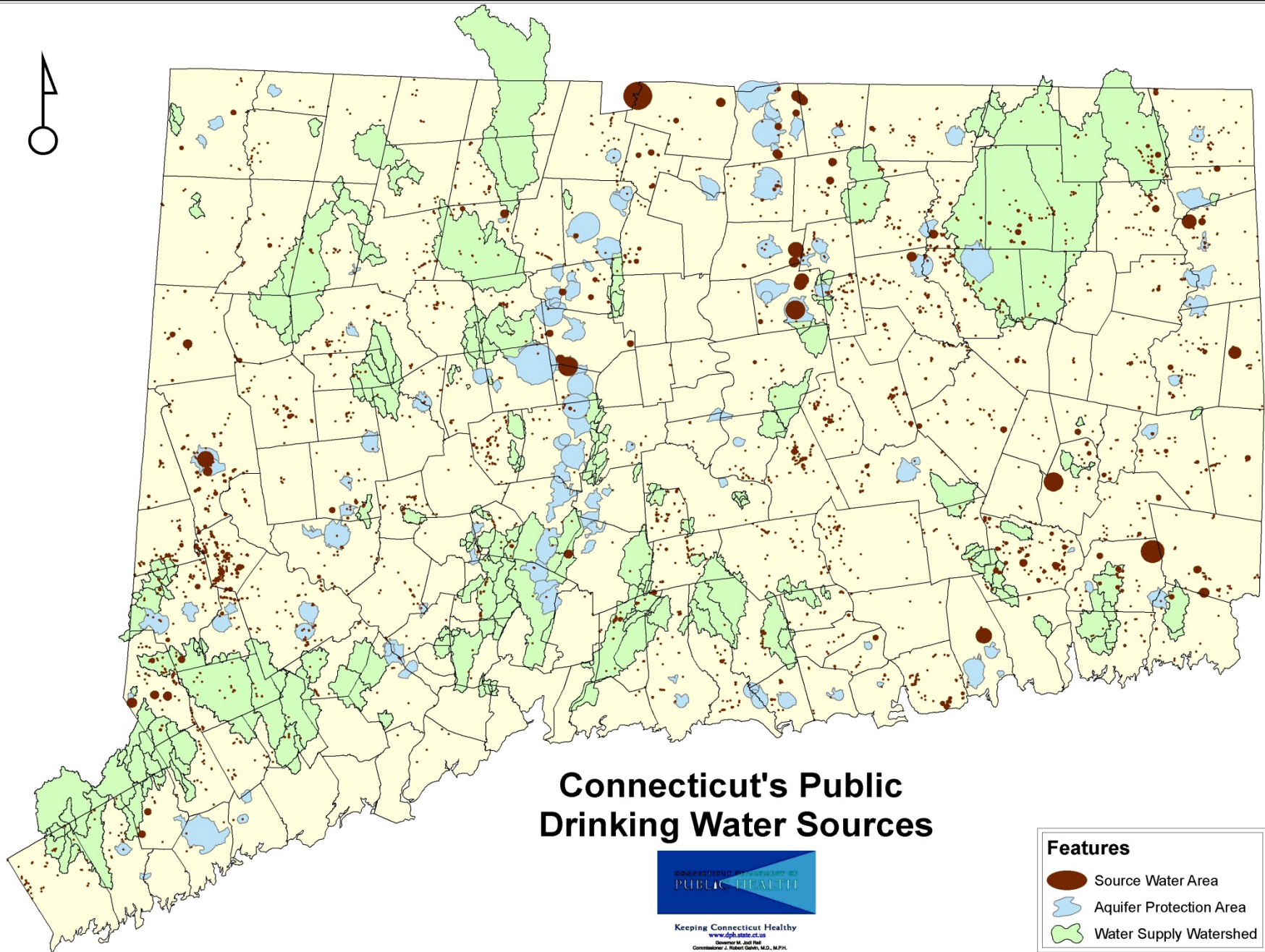
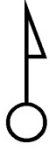


# Public Water Supply Service Area



## Legend

 PWS Service Areas






# Connecticut's Public Drinking Water Sources



Keeping Connecticut Healthy  
www.dph.state.ct.us  
Governor M. Jodi Rell  
Commissioner J. Robert Gresh, M.D., M.P.H.

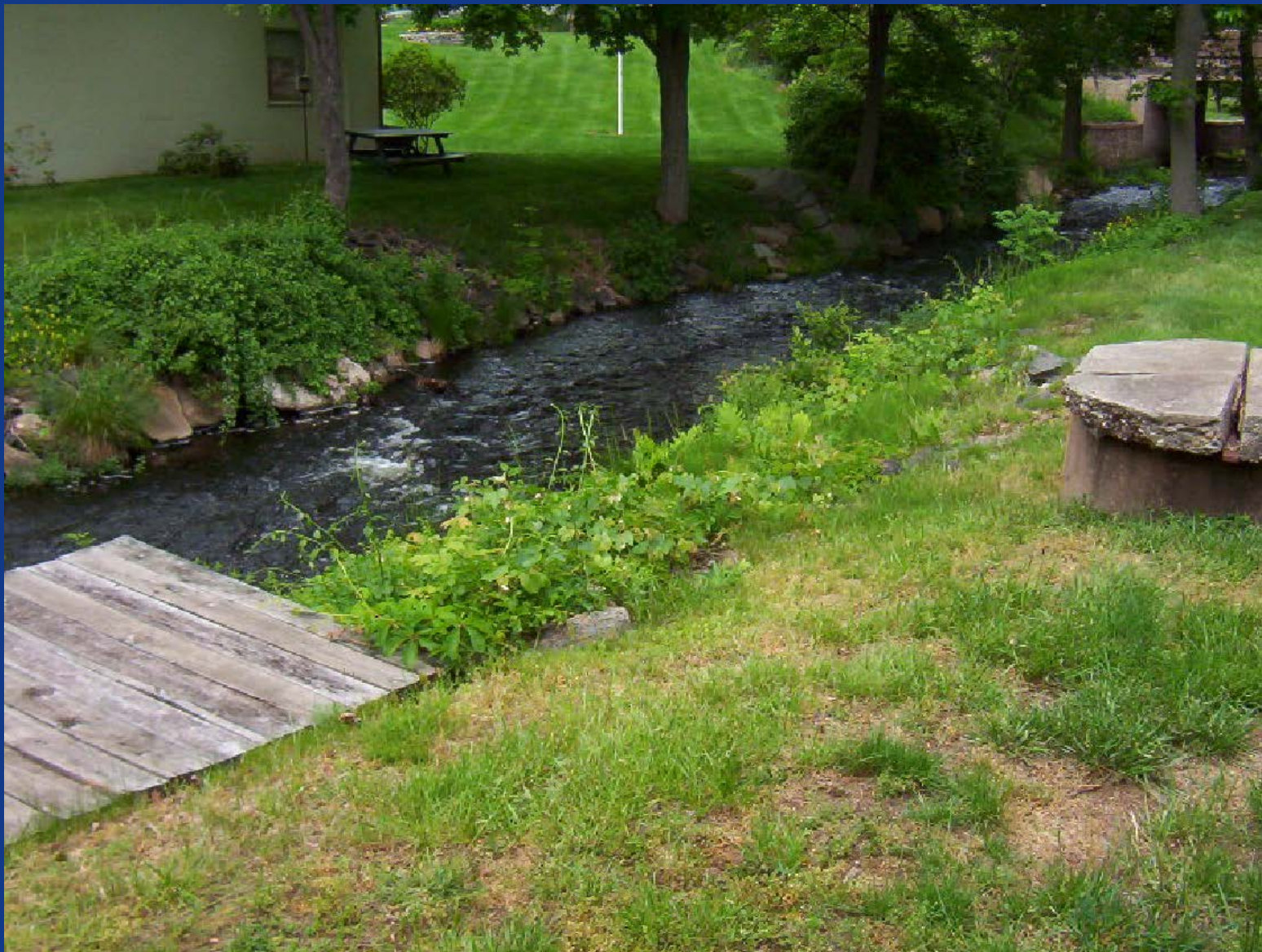
**Features**

-  Source Water Area
-  Aquifer Protection Area
-  Water Supply Watershed

# Reservoir system in Connecticut



# Small public water system well





# CT DPH Drinking Water Section

- Primacy of Safe Drinking Water Act - EPA
  - system engineering reviews
  - treatment/source review & approval
  - Drinking Water State Revolving Loan Fund
  - drinking water quality – oversight of monitoring and reporting
  - ground water rule
  - revised total coliform rule
- State Statutory Oversight
  - purity and adequacy of public drinking water
  - water company land regulation
  - recreation permitting, sale of excess water, certified operators, enforcement
  - water supply planning and regional planning (WUCC)





# Top Causes Public Drinking Water Outbreaks

- Giardia
- Legionella
- Norovirus
- Shigella
- Campylobacter
- Salmonella
- Hepatitis A
- Cryptosporidium
- E. Coli



# Importance of an Abundant Supply of Safe and Pure Water for a Community

- Public health protection
- Preservation of public trust
- Allows for community growth
- Allows for a community to plan for future growth
- Assure sanitary conditions for multiple facilities, schools, nursing homes, restaurants, hospitals, town facilities
- Provides sustainability and viability for community
- Public safety, fire protection
- Economic growth
- Priceless



# Coordinated Water System Water Supply Planning Process



# Coordinated Water System Plans (CWSP)

1. What is it – CT General Statutes Section 25-32d & 25-33h
2. Why does it exist
3. How does it operate
4. When convened
5. What is the present status
6. Why is it important
7. What is the future vision/thinking
8. How to accomplish this vision



# CWSP - What is it? & Why does it exist?

- 1981 Drought
- Water Resources Task Force Report
- Legislature created water supply planning – CGS Section 25-32d & Sections 25-33c – 25-33i - 1985
- Regulations – 25-33h-1
- CGS Section 25-33c – Legislative Intent – ...adequate supply of potable water is vital, readily available water for use is limited and should be developed with a minimum of loss and waste, DPH administer a process to coordinate water supply planning

# CWSP Statutes

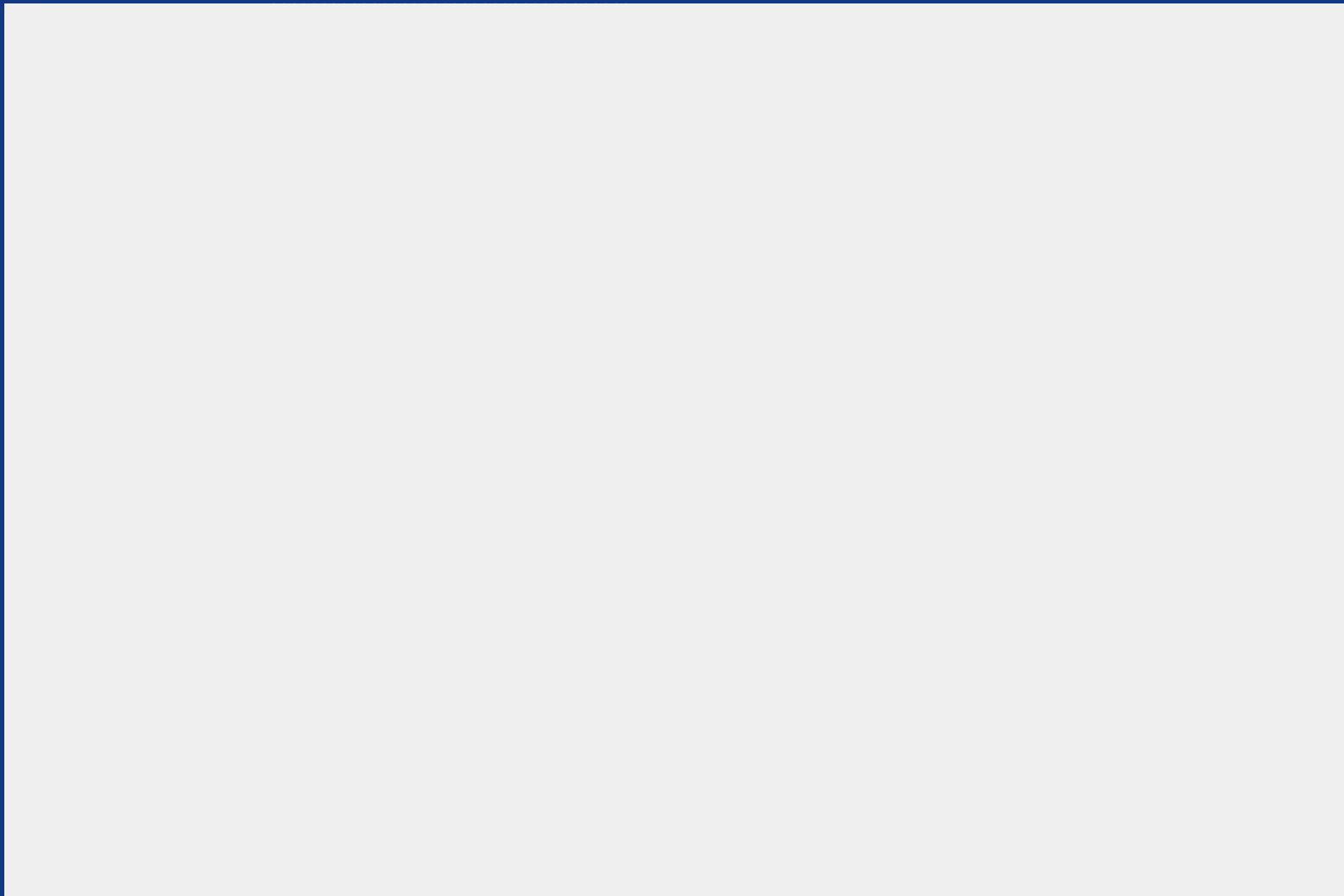
- 25-33d - Definitions
- 25-33e – Delineation of public water supply management areas, including the eight factors.
- 25-33f – WUCC Membership, includes representatives of public water systems and councils of government.
- 25-33g – Assessment of water supply conditions and problems & exclusive service areas.
- 25-33h – Coordinated water system plan.
- 25-33i – Consistency with the coordinated plan adopted pursuant to section 25-33h.

# CWSP Regulations

- 25-33h-1
  - (b) – Initiation of the Planning Process
  - (c) – Responsibilities of the WUCC
  - (d) – Contents of the Coordinated Water System Plan
    - (A) – Water Supply Assessment
    - (B) – Exclusive Service Area Boundaries
    - (C) – Integrated Report
    - (D) – Executive Summary
  - (e) – Plan Preparation
  - (f) – Plan Submission
  - (g) – Plan Approval
  - (h) – Plan Distribution
  - (i) – Plan Updates
  - (j) – Alteration of Public Water Supply Management Area Boundaries and Priorities
  - (k) – Plan Implemented



# Public Water Supply Management Areas







# WUCC – When were they convened?

- Housatonic WUCC – plan completed 1988
- Upper CT River WUCC – plan completed 1989
- South Central CT WUCC – plan completed 1991
- Southeast WUCC – plan completed and approved 2001
- Northeast WUCC – not convened
- North West WUCC – not convened
- South West WUCC – not convened



# 2014 WUCC Boundary Revisions

- Held three public hearings
- Reviewed all comments
- Followed law in the revision of the boundaries
- Reviewed 8 factors while considering all comments
- WUCC boundaries assured that Town and Council of Government boundaries are upheld
- Report to Commissioner Mullen October 2014



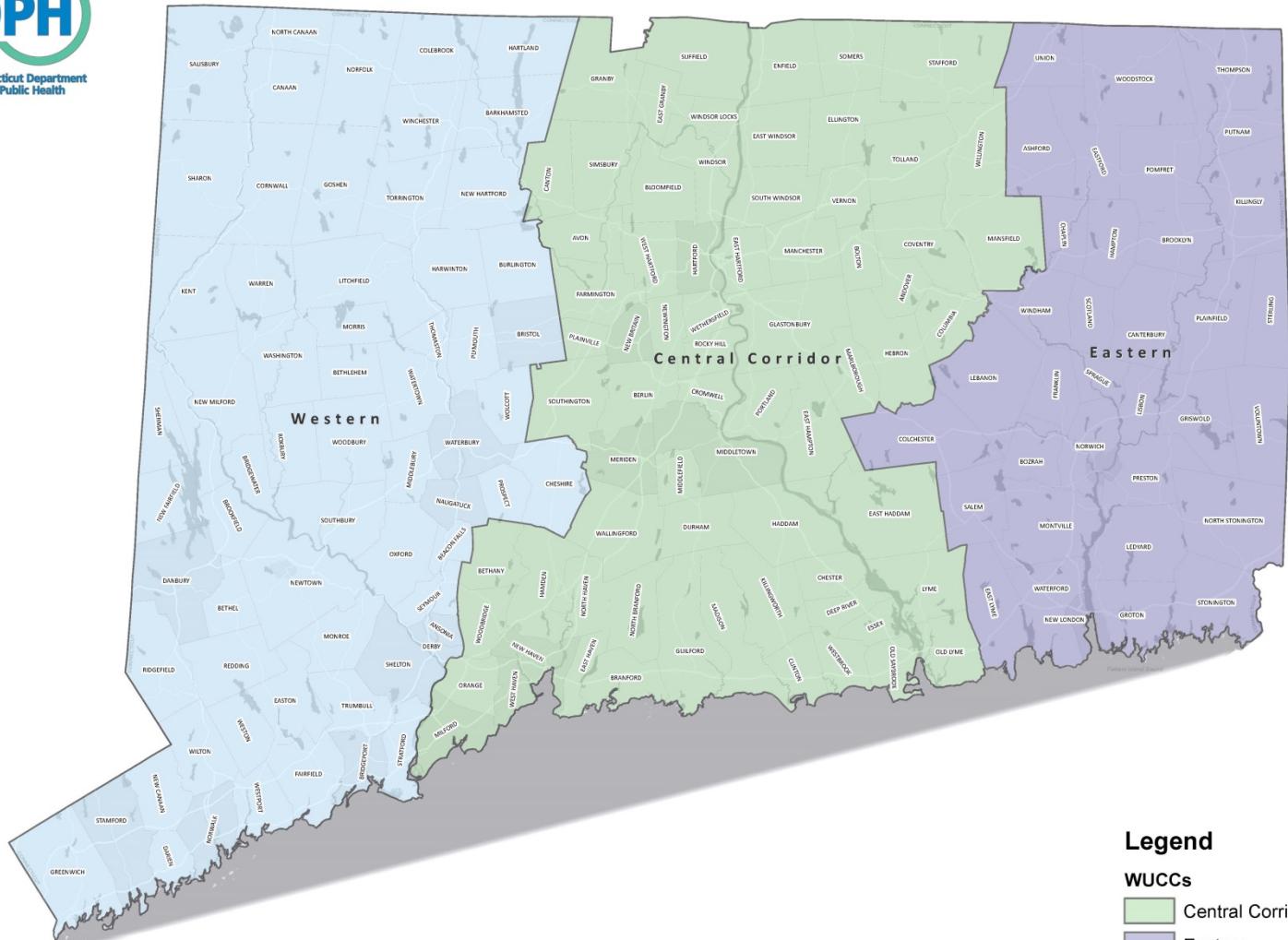
# Delineation of Public Water Supply Management Areas

In delineating the final boundaries the following eight factors were considered consistent with CGS Section 25-33e:

- Similarity of water supply problems among water companies
- Population density and distribution
- Locations of existing sources of public water supply, services areas or franchise areas
- Existing interconnections between public water systems
- Municipal and Councils of Government boundaries
- Natural drainage basins
- Topographic and geologic characteristics
- Any other factor the Commissioner deems relevant

# New WUCC Area Map

## WUCC Boundaries



**Legend**

**WUCCs**

- Central Corridor
- Eastern
- Western

# WUCC – Why are they important?

- Discussion of water supply issues
- Regional planning effort
- Use of plan as a guide
- Certificate process
- Bring together CEOs, LHD, COGs, Town Planners, stakeholders and public water systems
- Highlight regional water supply needs
- Forum to resolve issues locally
- Guide for water system growth and individual water supply plans – establish Exclusive Water Service Areas



# WUCC – Moving forward

- Fall 2015 data gathering
- Fall 2015 WUCC informational meetings
- Develop & follow standard procedures
- Early 2016 DPH to hire a consultant to assist the three WUCCs
- Convene three WUCCs in early 2016



# Need to Complete Statewide Water Supply Planning

- Understand water supply needs and excess capacity
- Plan to meet future supply needs
- Include partners and stakeholders
- Additional focus on water conservation and emergency preparedness
- Completion of a State wide Coordinated Water Supply Plan
- Dynamic Plan



# WUCC Data Collection Contract

- Consultant collecting and organizing data that will be utilized to complete the three regional WUCC plans
- Scope of work to be completed by December 31, 2015
- Collect and organize data
- Data is being tied to new or existing GIS data layers





# WUCC Data Collection Contract

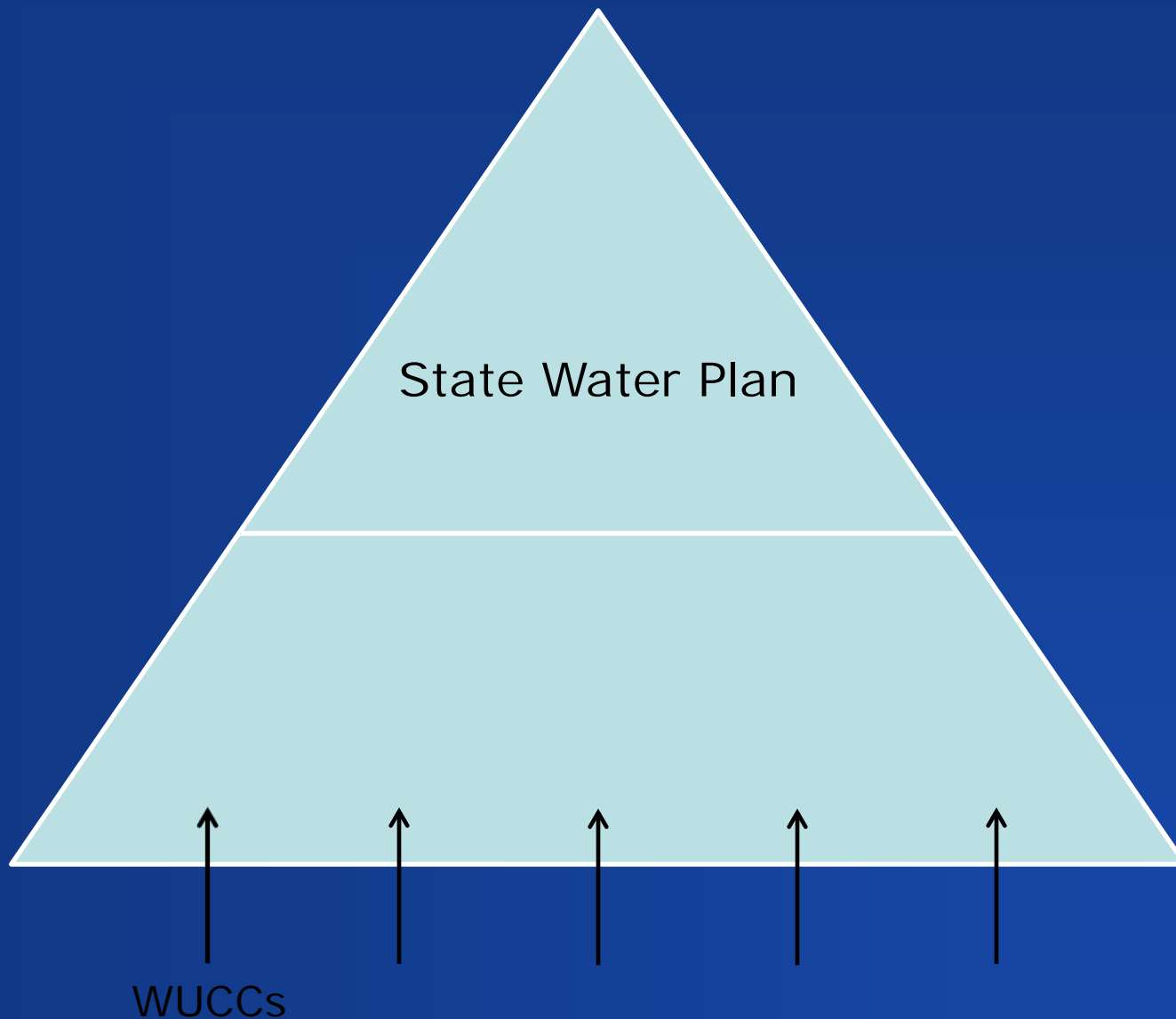
- Data being collected includes, but is not limited to, the following:
  - Existing service area boundaries
  - Water Company Land
  - Existing/future interconnections
  - Alternative sources
  - Firefighting capability
  - System hydraulics and pressure zones
  - Legal rights
  - System limits established by statutes or special acts
  - Supply agreements
  - Existing coordination between PWSs
  - Historic production, peaking and nonrevenue figures
  - Historic and projected water demands



# WUCC Data Collection Contract

- Continued:
  - Safe yield
  - Purchased water
  - Reliability and supply adequacy
  - Physical service limitations
  - Water treatment
  - Major facilities in need of expansion or replacement
  - Population data and projections
  - Land use planning, patterns and trends
  - Growth trends
  - Leak detection capabilities
  - Emergency power
  - Water quality

# The Big Picture



# Thank you

