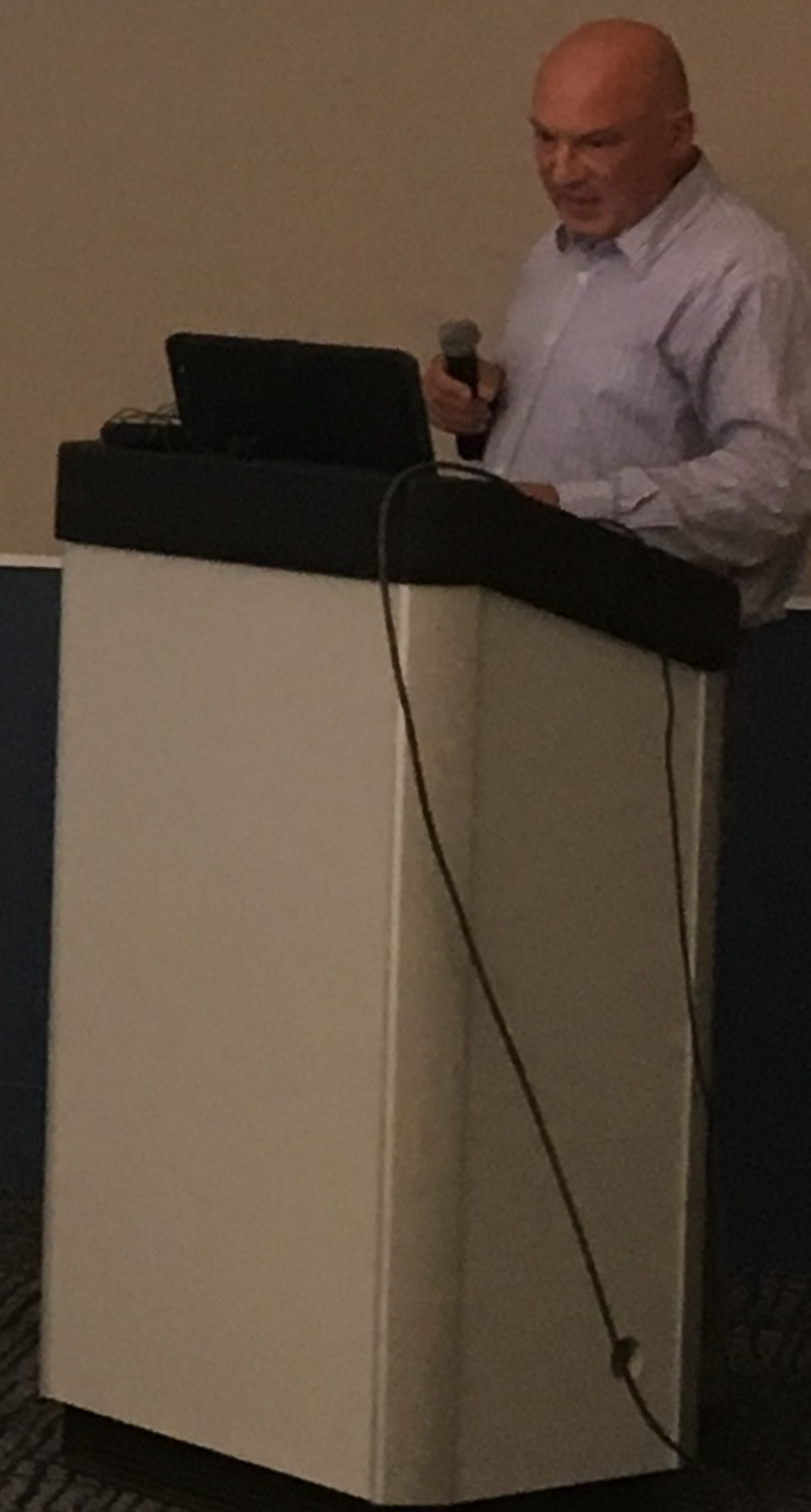
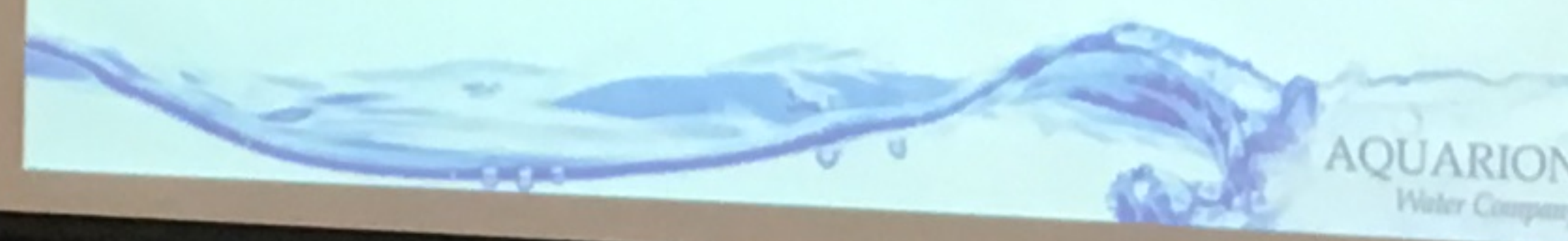






## Identification Strategy

- Identify potential generators or users.
- Consult with CT DPH on PFAS research, information, identification, awareness, etc.
- Review Watershed and Aquifer mapping to locate sites within these areas.
- Determine need to identify additional sites outside of Watershed and APA areas.







Identification Strategy

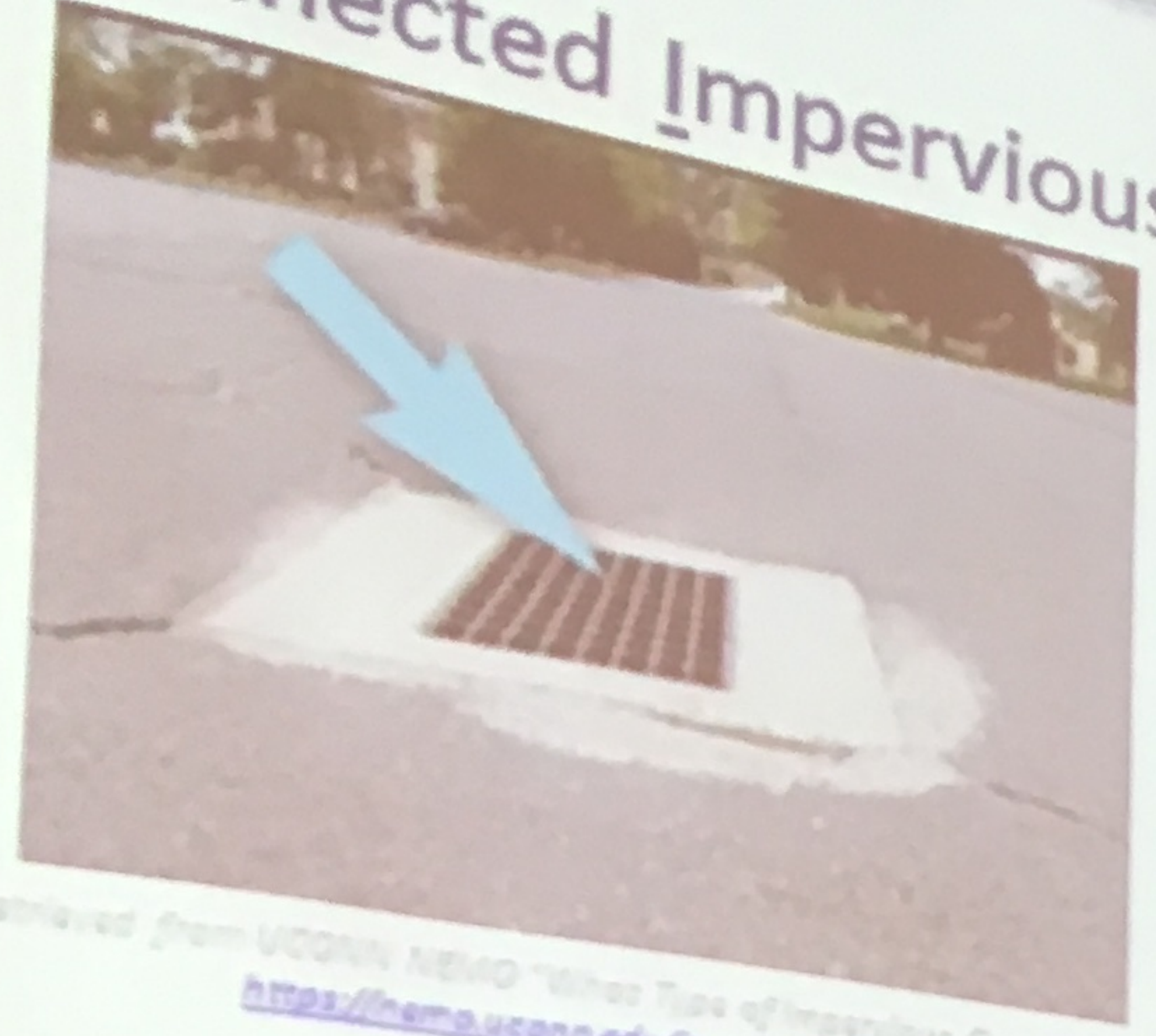
- Identify potential generators or users.
- Consult with CT DPH on PFAS research, information, identification, awareness, etc.
- Review Watershed and Aquifer mapping to locate sites within these areas.
- Determine need to identify additional sites outside of Watershed and APA areas.

YNDHAM





# ly Connected Impervious Area

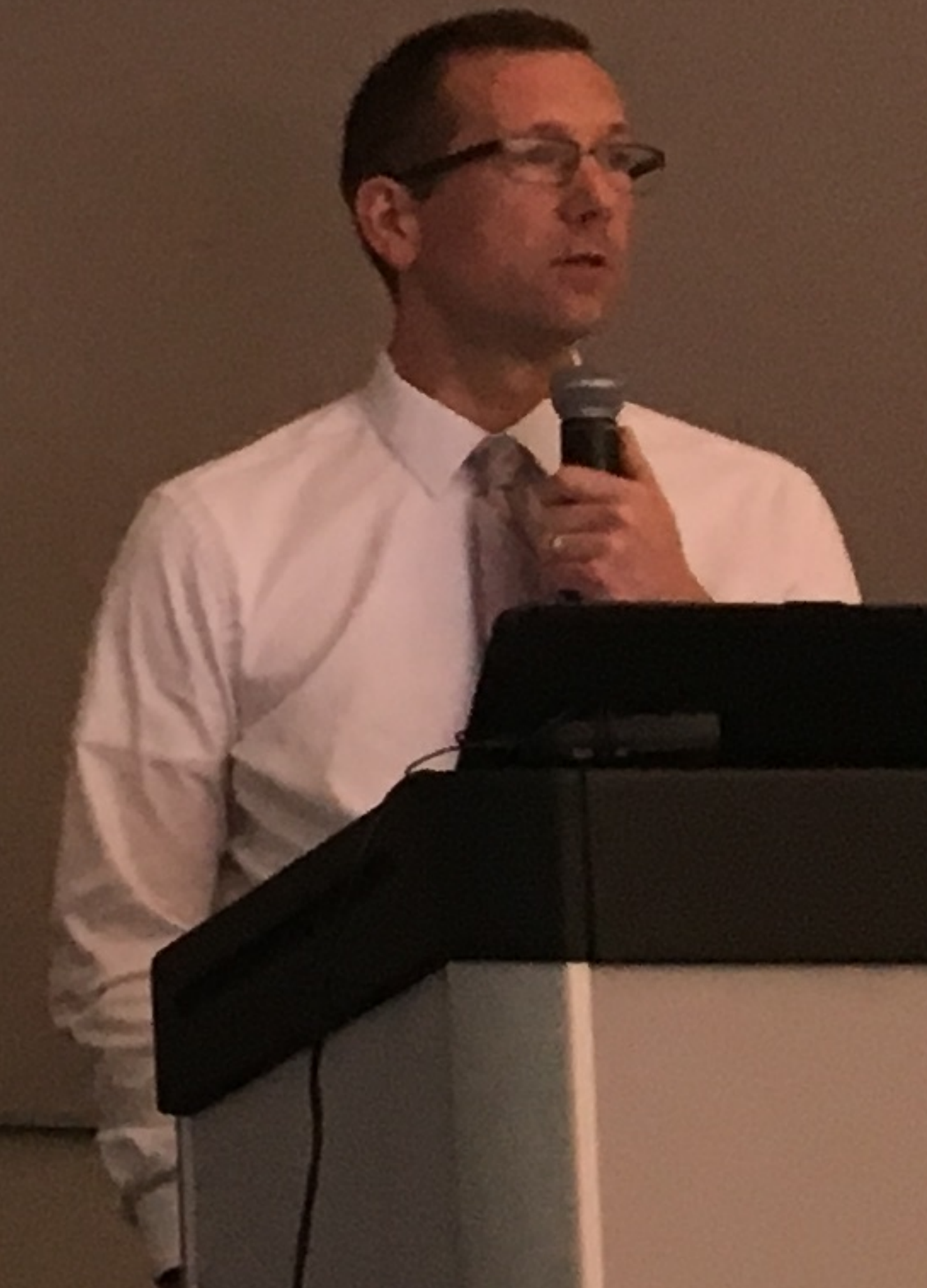


Retrieved from UConn NEAD "What Type of Impervious Cover do you Have?"  
<https://nema.uconn.edu/ic-guide/step2-type.htm>

# Disconnected Impervious Area



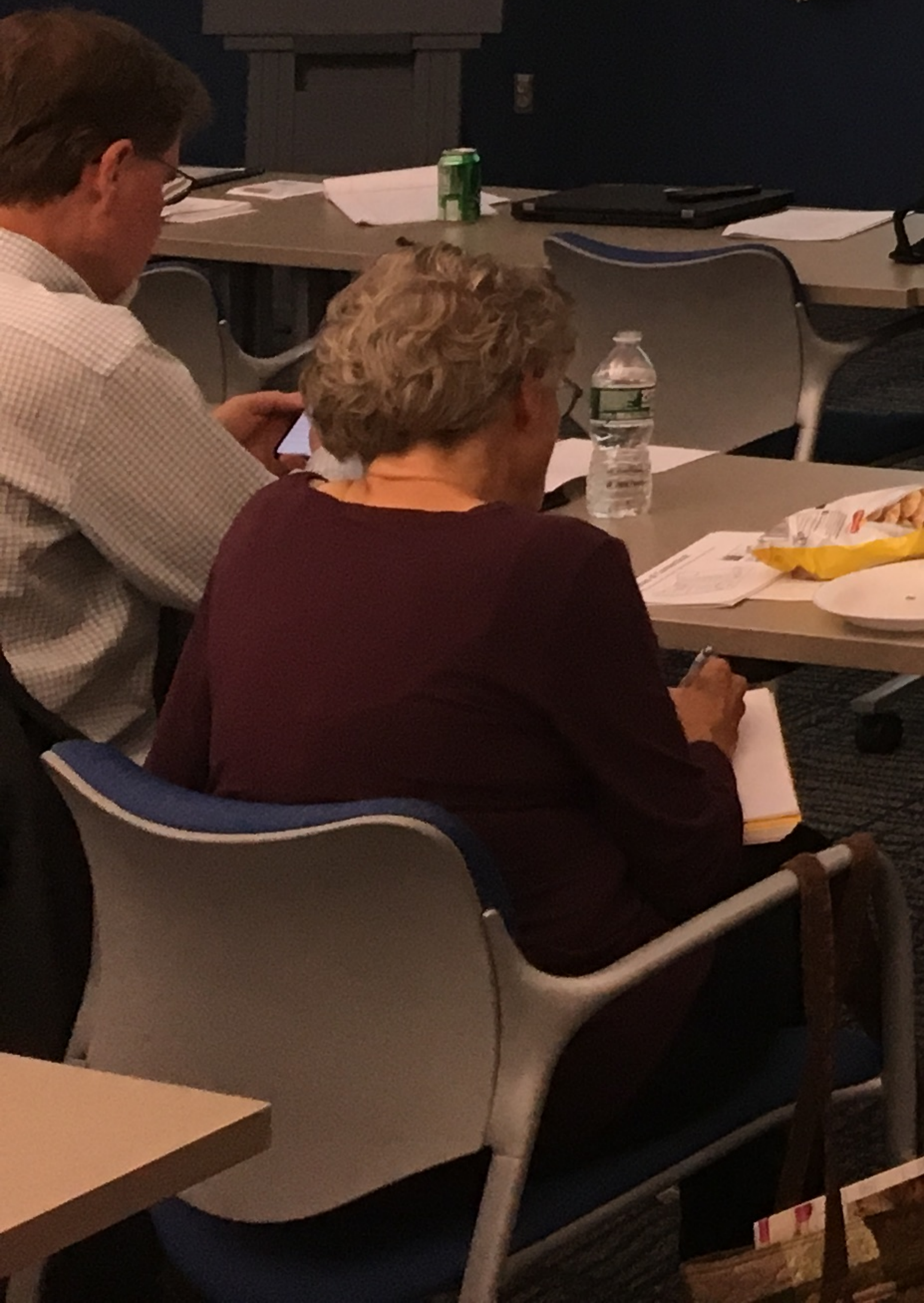
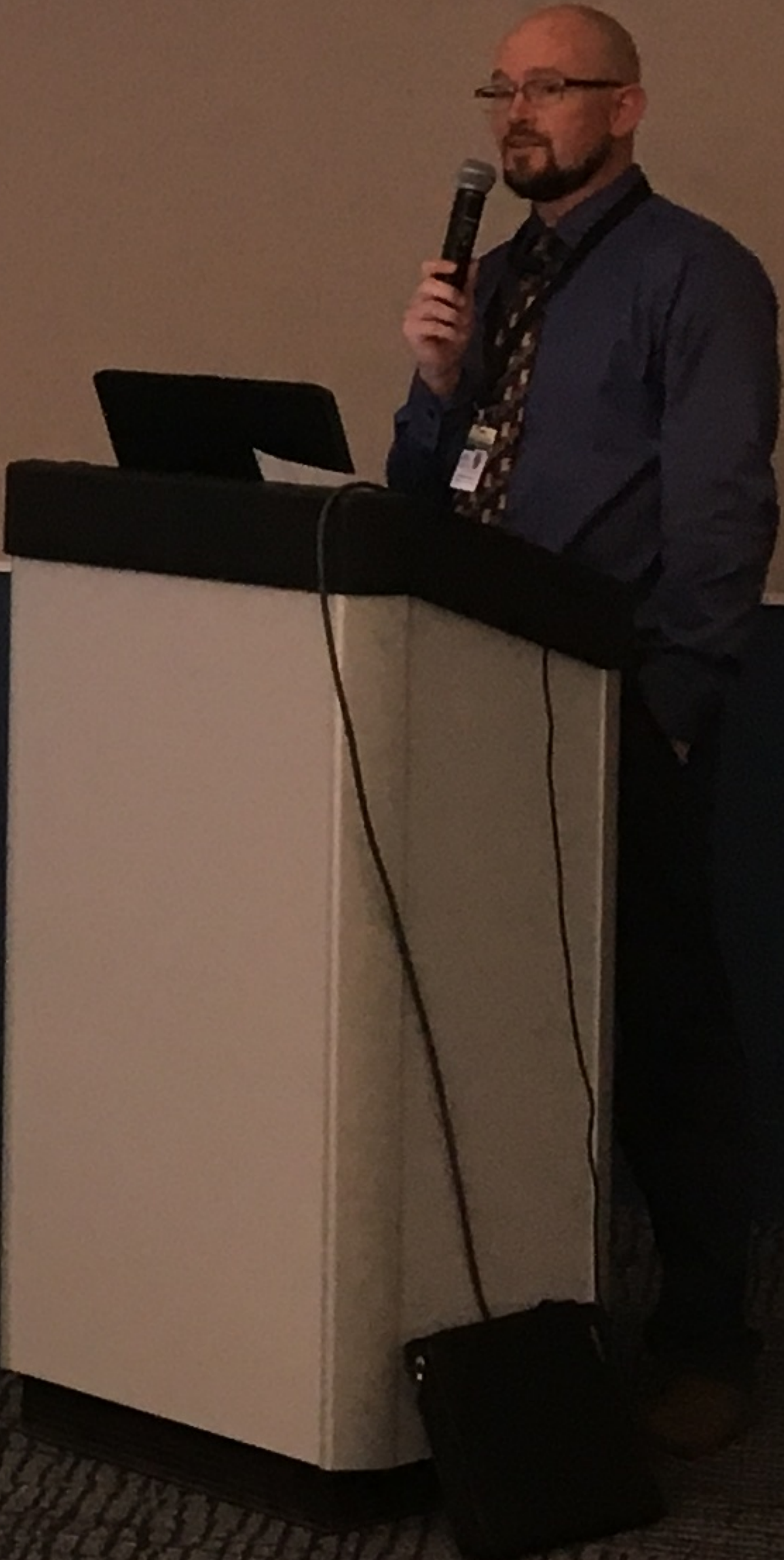
Retrieved from UConn NEAD "What Type of Impervious Cover do you Have?"  
<https://nema.uconn.edu/ic-guide/step2-type.htm>





Ryan McCammon, RS/REHS  
Glastonbury Health Department  
Connecticut Environmental Health Association  
Subsurface Co-Chair

Connecticut Department of Public Health  
Environmental Engineering Program  
410 Capitol Avenue- MS# 51-SEW  
P. O. Box 340308  
Hartford CT, 06134  
Phone: (860) 509-7296  
Fax: (860) 509-7295





Ryan McCammon, RS/REHS  
Glastonbury Health Department  
Connecticut Environmental Health Association  
Subsurface Co-Chair

Connecticut Department of Public Health  
Environmental Engineering Program  
410 Capitol Avenue- MS# 51-SEW  
P. O. Box 340308  
Hartford, CT, 06134  
Phone: (860) 509-7296  
Fax: (860) 509-7295

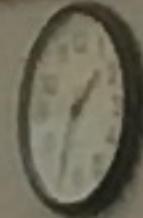







**Watershed Inspection Program**

- 140 square miles of aquifers and watersheds
- Over 50,000 inspection sites
- Over 280 high risk sites
- Over 150 garages and gas stations
- I-95 crossing over a reservoir
- Sanitary sewer system bypasses
- Trap rock quarry





### Watershed Inspection Program

- 140 square miles of aquifers and watersheds
- Over 50,000 inspection sites
- Over 280 high risk sites
- Over 150 garages and gas stations
- I-95 crossing over a reservoir
- Sanitary sewer system bypasses
- Trap rock quarry



The Regional Water Authority

Speaker at a podium

Audience seated at tables





Lake Willoughby, Vermont, CT  
Lake Champlain, Lake Willoughby, Massachusetts, CT

