



AQUARION

Water Company

Stewards of the Environment

February 7, 2018

Central Region WUCC
c/o Brendan Avery
Hazardville Water Company
281 Hazard Avenue
Enfield, CT 06082

Re: AWC/CWC, ESA Revision, Suffield, CT

Central Region WUCC:

The Aquarion Water Company (AWC) and Connecticut Water Company (CWC) jointly request a revision to their respective Exclusive Service Areas (ESA's) in the Town of Suffield, Connecticut. Aquarion's West Suffield System was purchase from West Service Corporation in April of 2014 and the ESA inherited from the West Service Corporation did not include the ability to provide water service to properties adjacent to the existing water mains. This request is to revise the AWC West Suffield ESA to include all parcels which have frontage on the existing distribution system's water mains.

Attached is a map with the delineation of the ESA boundary change that shows the current AWC West Suffield System ESA and the CWC ESA, and the requested revisions to the ESA's. The ESA boundary revision is drawn utilizing parcel boundaries.

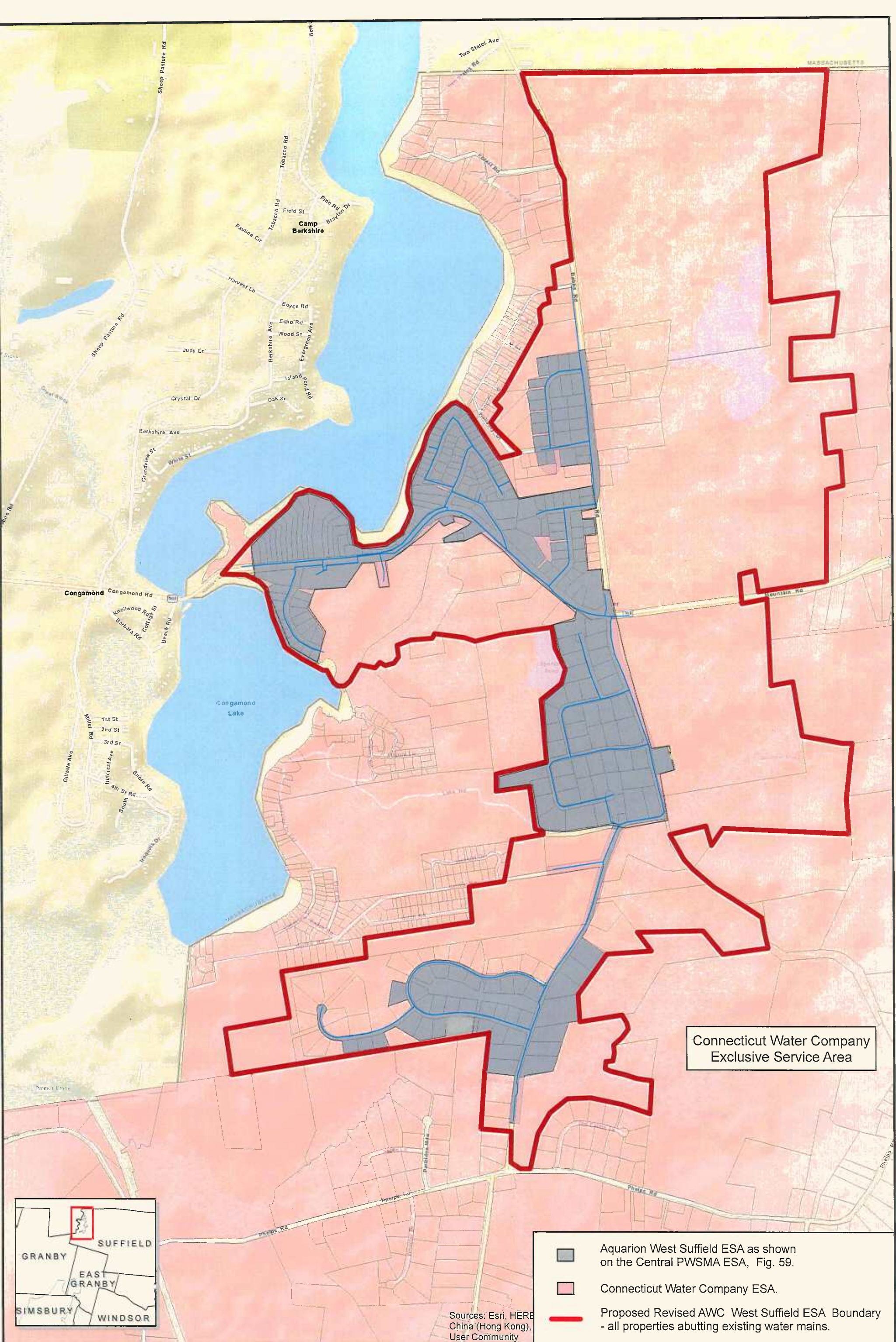
If you have any questions regarding the requested ESA revision, do not hesitate to call me at (203) 362-3033.

Sincerely,

Kenneth R. Skov
Manager Water Resources & Infrastructure Planning

Enclosure: Map

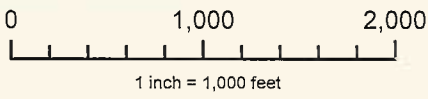
cc: Craig Patla, CWC



Connecticut Water Company
Exclusive Service Area

- Aquarion West Suffield ESA as shown on the Central PWSMA ESA, Fig. 59.
- Connecticut Water Company ESA.
- Proposed Revised AWC West Suffield ESA Boundary - all properties abutting existing water mains.

Sources: Esri, HERE
China (Hong Kong),
User Community



Feb 2018