

# Connecticut Department of Public Health

Proposed Alteration of the Public Water  
Supply Management Areas

June 16, 2014

Lori Mathieu & Eric McPhee



# Purpose

In an effort to streamline the planning process the DPH is proposing to reduce the number of water supply management areas from 7 to 4.

Changing conditions have prompted the DPH to alter the existing boundaries. Interconnections, growth of systems, new EPA rules, and new water quality concerns are just a few conditions that have drastically changed since the law was passed in 1985.

Per the Connecticut General Statutes, once the WUCCs are convened, the coordinated water system plan must be submitted to the Commissioner of Public Health not more than two years after the first meeting.



# Timeline

April 17, 2014 - DPH requested comments from OPM, DEEP and PURA

April 21, 2014 - DPH distributed the Notice of Hearings and opened the public comment period

May 15 & 19 2014 - DPH held two public hearings

May 30, 2014 - DPH distributed the Notice of Continued Hearing and extended the public comment period until July 15, 2014

June 16, 2014 - DPH held the third public hearing

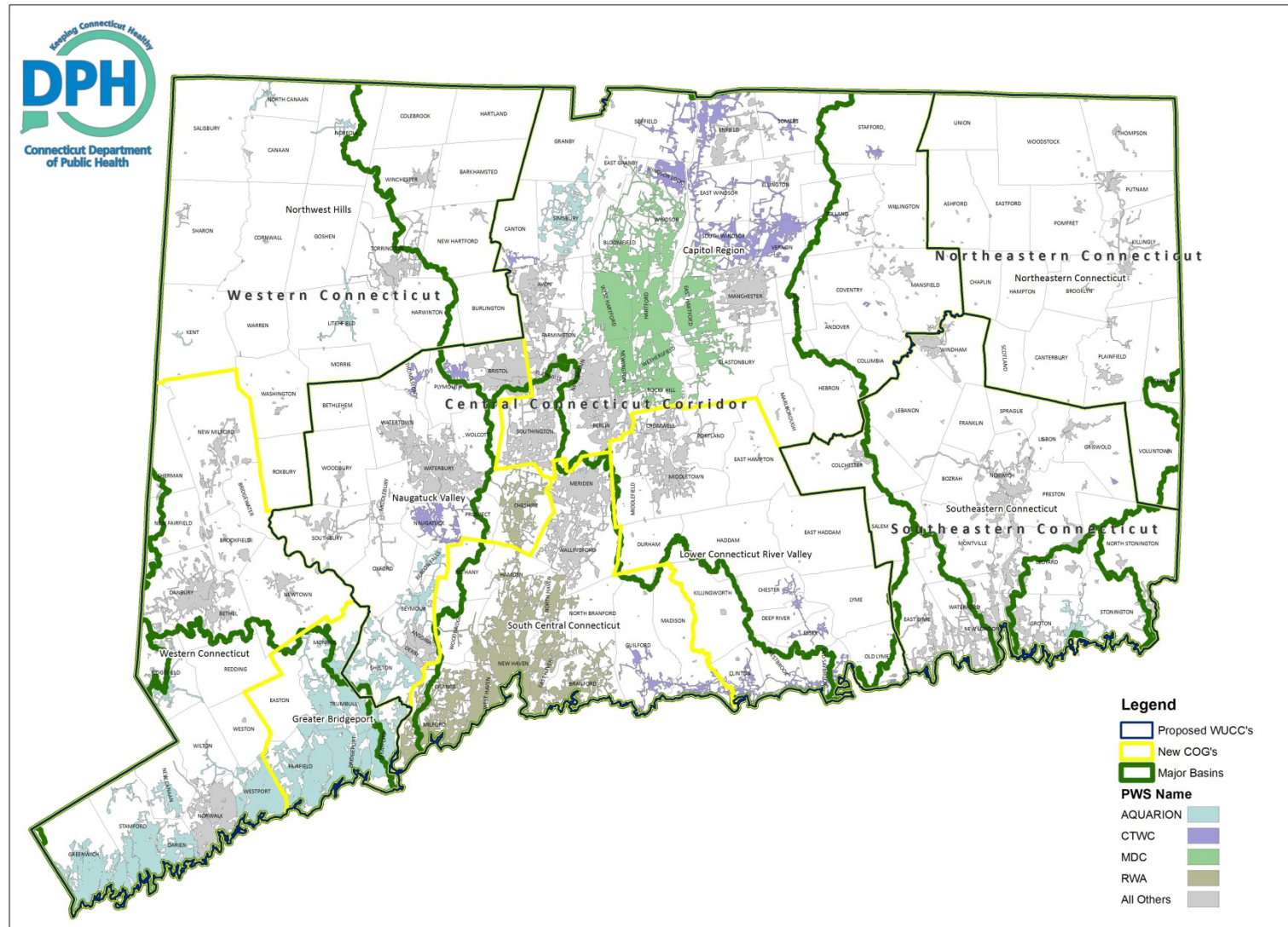


# Delineation Considerations

Per Section 25-33e of the Connecticut General Statutes the Commissioner shall consider the following:

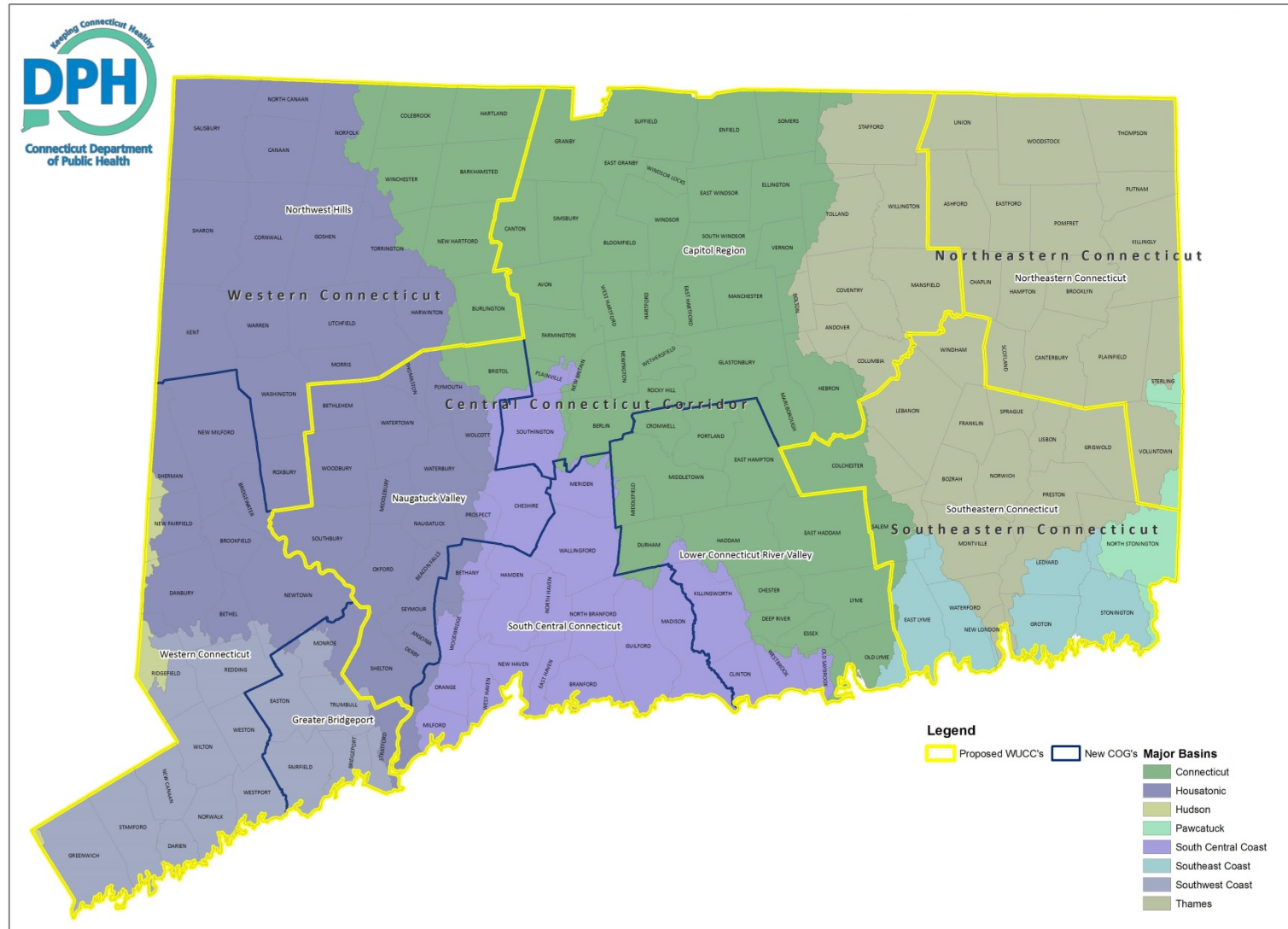
- The similarity of water supply problems among water companies
- Population density and distribution
- The location of existing sources of public water supply, service areas or franchise areas
- Existing interconnections between public water systems
- Municipal and regional planning agency (now COG) boundaries
- Natural drainage basins
- Topographic and geologic characteristics
- Any other factor she deems relevant

# Proposed with Service Areas

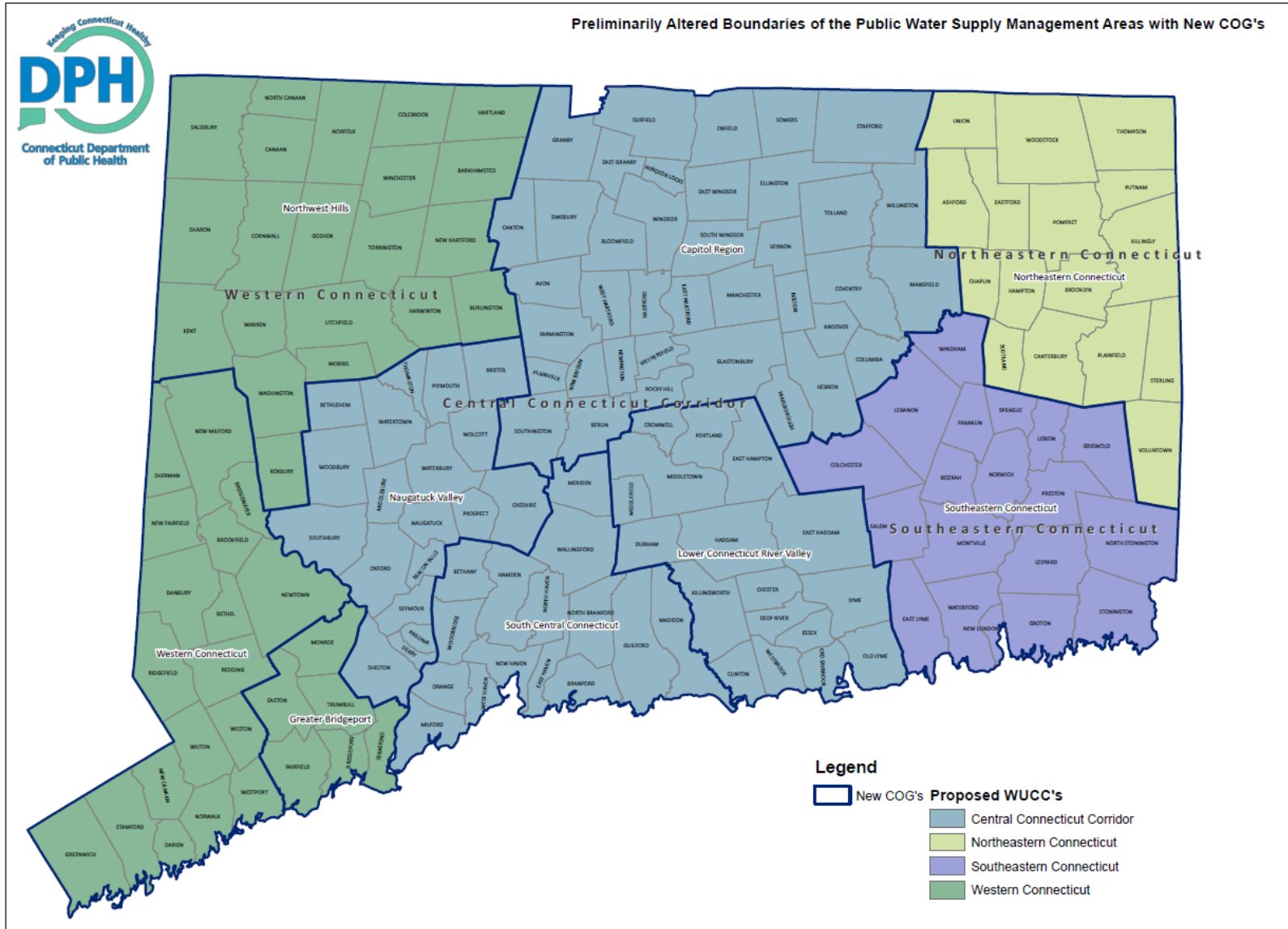




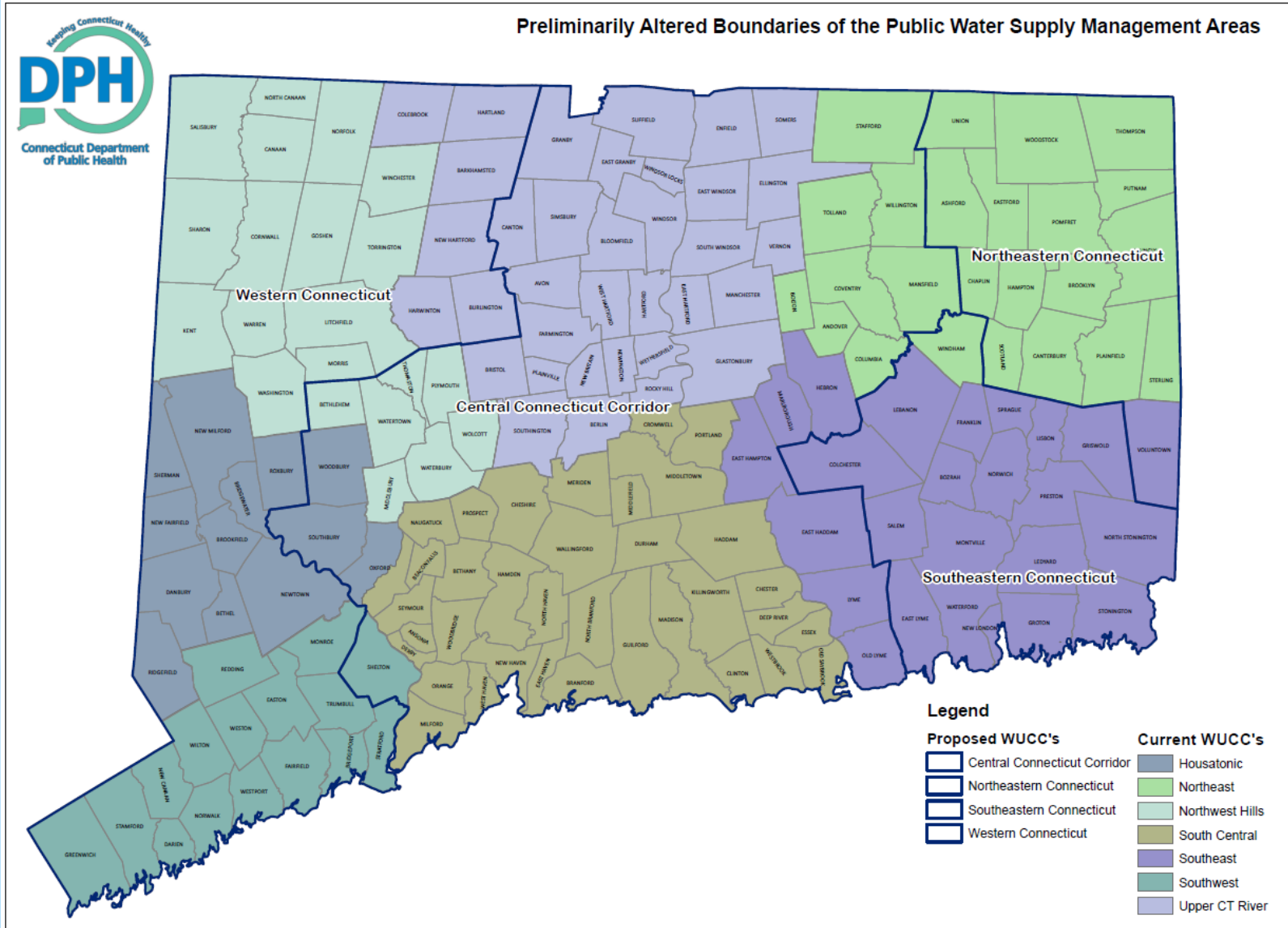
# Proposed with Major Basins



# Proposed with new COGs



# Current vs. Proposed







# Comments received to date

Entity	Comments
OPM, D. LeVasseur	1) Move Naugatuck Valley COG into Western WUCC. 2) Combine Northeast and Southeast WUCCs.
DEEP, B. Wingfield	1) Follow major river basins. 2) Divide Western WUCC into Northwest and Southwest.
Upper CT River WUCC, G. Bligh	1) Add towns of Colebrook, Hartland, Barkhamsted, New Hartford, Harwinton & Burlington to Central WUCC.
SCCOG, J. Butler	Supports
Aquarion, K. Skov	1) Add Shelton to the Western WUCC. 2) Follow major river basins rather than COGs.
Windham, N. Beets	1) Concerned with responsibility for TNCs and NTNCs. 2) Believes SEWUCC membership is appropriate.
Westside Manor, N. Dhanraj	Not applicable
NECCOG, J. Filchak	Supports
Farmington River Collaborative, R. Barlow	Opposes
Newtown Health District	1) Western WUCC is too large. 2) Ensure consultant has available staffing to cover the entire state.
RWA, L. Bingaman	1) Central WUCC is too large. 2) Concern over competing for ESAs. 3) If Western and Central WUCCs remain as proposed, suggests dividing into "sub-areas" that would report to a "WUCC executive committee"
Bristol, R. Longo	1) Add towns of Burlington and Harwinton to Central WUCC. 2) Believes local HDs should be considered.
Central Naugatuck COG, S. Gold	1) Would like NVCOG area to be added to Western WUCC.
CWWA, B. Gara	1) Add towns of Colebrook, Hartland, Barkhamsted, New Hartford, Harwinton & Burlington to Central WUCC. 2) Combine Northeast and Southeast WUCCs. 3) Willimantic Reservoir is in a different WUCC than Windham's system. 4) Shelton is separated from Aquarion. 5) Barkhamsted and Nepaug Reservoirs are separated from MDC. 6) Several Waterbury sources are separated from the system. 7) Possibly create a petition process. 8) Develop Standard Operating Procedures.
Marlborough, P. Hughes	1) Add Marlborough to SEWUCC.
Norwich, M. Decker	1) Supports but does have concern about size of Central and Western WUCC.
East Lyme, P. Formica	1) Believes East Lyme will be more affected by planning efforts in SE Connecticut. 2) Old Lyme and Lyme should have involvement in SE planning efforts. 3) Concur with North Stonington.
North Stonington, N. Mullane	1) Believes Old Lyme, Lyme, East Haddam, East Hampton, Marlborough and Hebron should be added to SEWUCC.
Lebanon, J. Okonuk	1) Concur with North Stonington and East Lyme.
CTWC, D. Radka	1) Combine Northeast and Southeast WUCCs.
Farmington River Watershed Assoc., E. Fielding	1) Concerned about separating the Farmington basin from Central Connecticut.

# Comment trends

- Move Colebrook, Hartland, Barkhamsted, New Hartford, Burlington and Harwinton into the Central Corridor WUCC (4 comments - 20%)\*
- Move Naugatuck Valley COG into Western WUCC (4 comments - 20%)\*\*
- Move Hebron, Marlborough, East Hampton, East Haddam, Lyme and Old Lyme back to the SEWUCC (4 comments - 20%)\*\*\*
- Combine NE and SE WUCCs (3 comments - 15%)
- Proposed WUCCs are too large (3 comments - 15%)

\* Includes Bristol's request to move Harwinton and Burlington into Central Corridor

\*\* Includes requests to move Shelton into Western WUCC

\*\*\* Includes Marlborough's request to remain in SEWUCC

The comment period has been extended until **July 15, 2014**.

Please submit written comments to:

Justin Milardo

Department of Public Health

Drinking Water Section

410 Capitol Avenue

MS#51WAT, P.O. Box 340308

Hartford, Connecticut 06134-0308

If you have questions, please call 860-509-7333 and ask to speak with Justin Milardo or Rich Iozzo.



Connecticut Department of Public Health  
*Keeping Connecticut Healthy*

