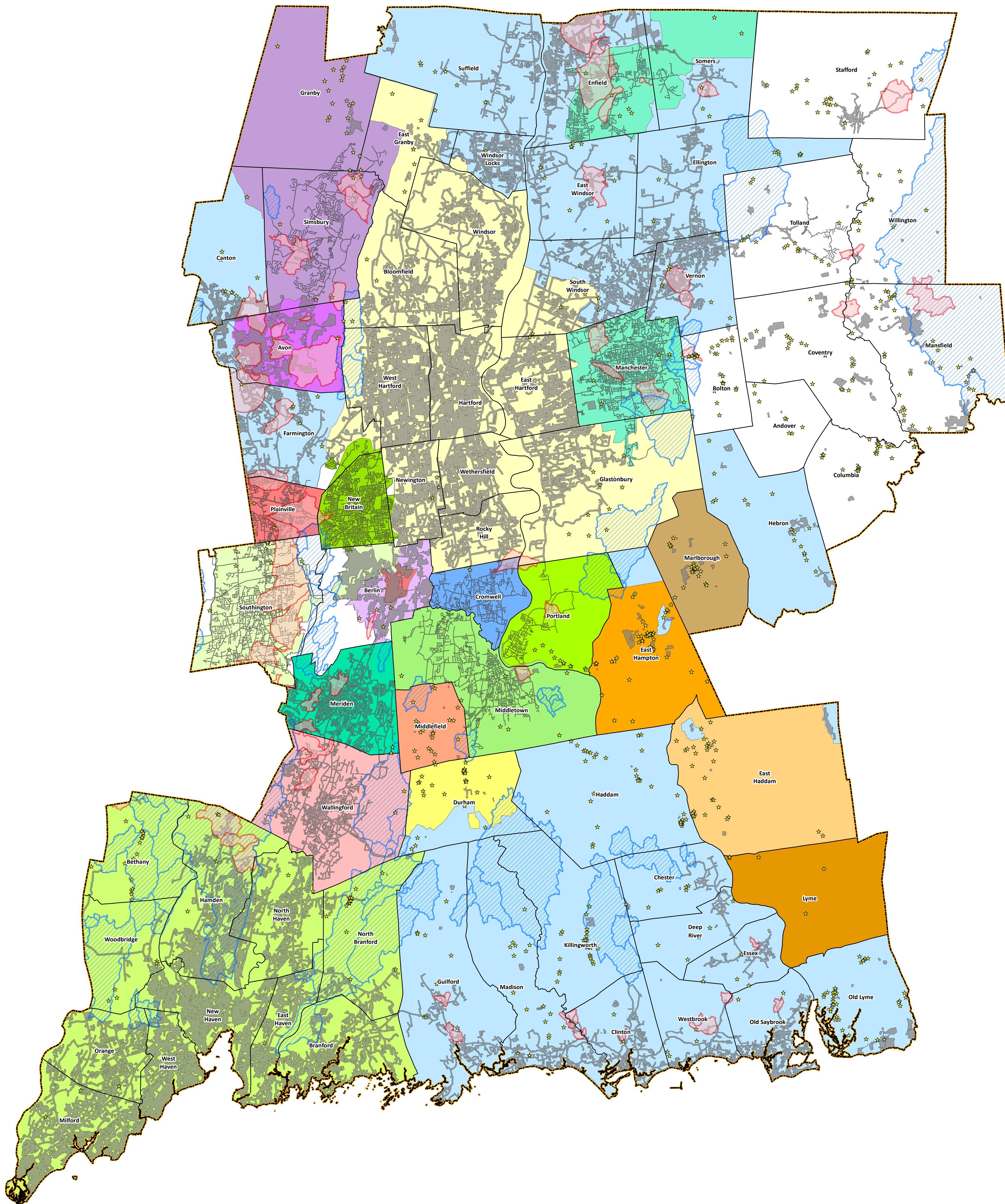
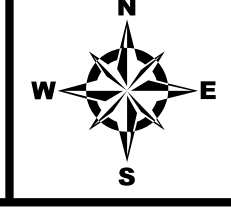



LEGEND

- ★ NON-COMMUNITY SYSTEMS
- AQUIFER PROTECTION AREAS (APA)
- ▨ PWS WATERSHED
- COMMUNITY WATER SYSTEMS
- EXCLUSIVE SERVICE AREA**
- EXCLUSIVE UNASSIGNED/UNDEFINED
- AQUARION WATER CO.
- AVON WATER CO
- BERLIN WATER CONTROL COMMISSION
- CROMWELL FIRE DISTRICT WATER DEPARTMENT
- CONNECTICUT WATER CO.
- HAZARDVILLE WATER COMPANY
- KENSINGTON FIRE DISTRICT
- MANCHESTER WATER DEPARTMENT
- MERIDEN WATER DIVISION
- METROPOLITAN DISTRICT COMMISSION
- MIDDLETOWN WATER DEPARTMENT
- NEW BRITAIN WATER DEPARTMENT
- PORTLAND WATER DEPARTMENT
- SOUTH CENTRAL CT REGIONAL WATER AUTHORITY
- SOUTHWINGTON WATER DEPARTMENT
- TOWN OF DURHAM
- TOWN OF EAST HADDAM
- TOWN OF EAST HAMPTON
- TOWN OF LYME
- TOWN OF MARLBOROUGH
- TOWN OF MIDDLEFIELD
- VALLEY WATER SYSTEMS, INC.
- WALLINGFORD WATER DEPARTMENT
- WORTHINGTON FIRE DISTRICT



CENTRAL PWSMA OVERVIEW			
CENTRAL CONNECTICUT WATER SUPPLY ASSESSMENT			 <small>SOURCE: CT DPH, CT DEEP</small>
<small>SJB DESIGNED</small>	<small>SJB DRAWN</small>	<small>DM CHECKED</small>	<small>DATE: October 17, 2016</small>
<small>SCALE: 1:148,000</small>			 <small>99 Realty Drive Cheshire, Connecticut 06410 (203) 271-1773 Fax: (203) 271-9733 www.miloneandmacbroom.com</small>
<small>PROJECT NO.: 1017-05-03</small>			