



# *Emergency Preparedness Strategy & Connecticut's Public Drinking Water Systems*

*Lori Mathieu, Public Health Section Chief  
Drinking Water Section*

*Connecticut Department of Public Health*

*EPA Region 1 Hurricane Summit & EMAC Workshop, Boston, MA*

*June 5, 2013*

*Drinking Water Section*

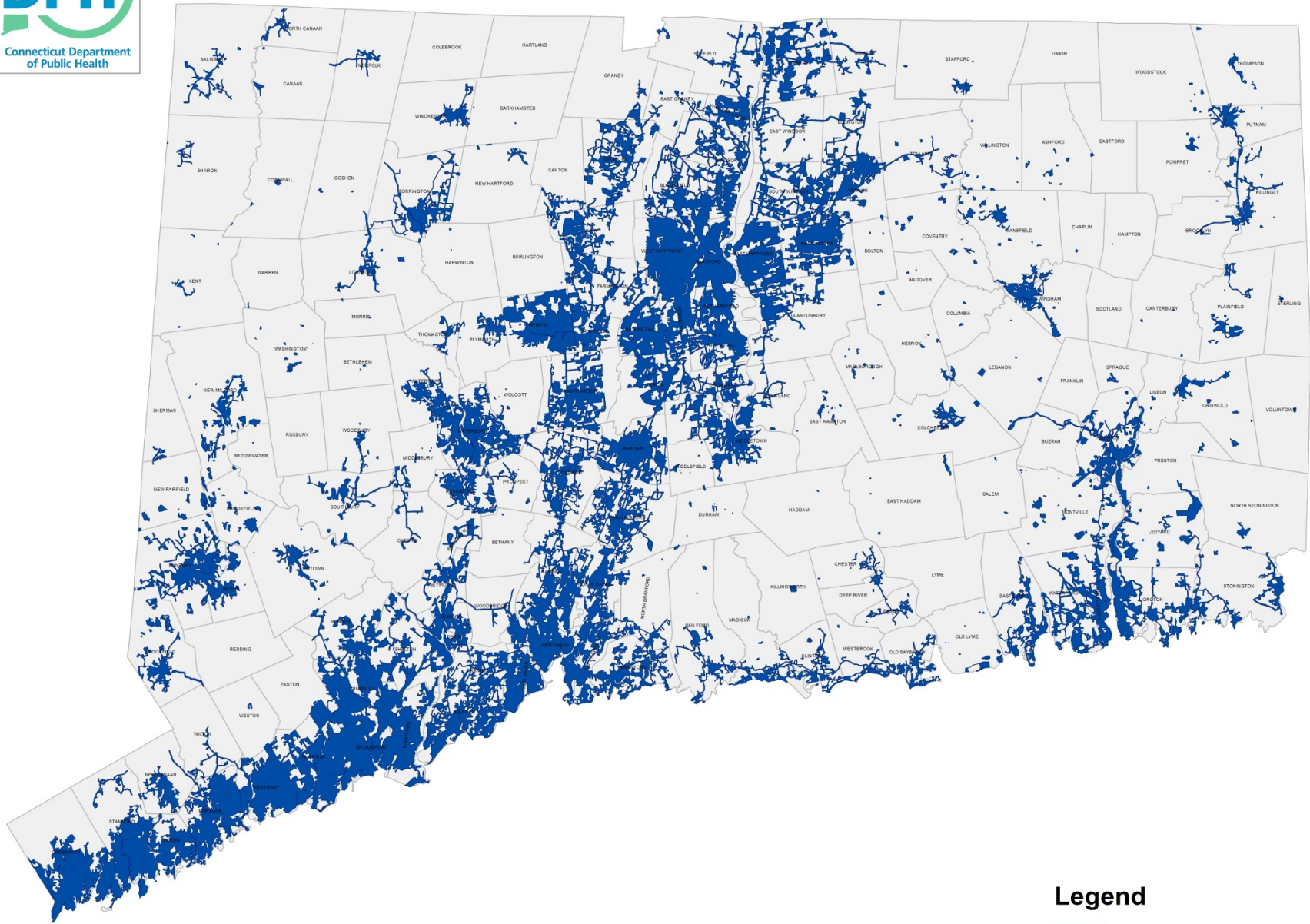


# CT DPH Drinking Water Section Responsibilities

- 💧 Regulate over 2,500 Public Water Systems with 4,400 sources
- 💧 2.9 million CT residents served – 3.5 million total population
- 💧 96 systems serve over 1,000 people
- 💧 461 systems serve under 1,000 people - small community systems
- 💧 2,028 non-community systems



# Public Water Supply Service Area



## Legend

 PWS Service Areas



# Emergency Preparedness CT's Public Water Systems

- 💧 Storm Effects

- 💧 Lessons Learned – After Actions

- 💧 Preparedness & Communications

# Storm Irene August 2011

- 💧 137 small community public water systems (cpws) on Boil Water Advisory (30% of small cpws)
- 💧 16,624 people affected
- 💧 99% of CT Residents retained their community public water
- 💧 Majority of large cpws on shoreline lost street power, however operations not affected due to emergency power capacity, street power restored in a few days, flooding had little effect

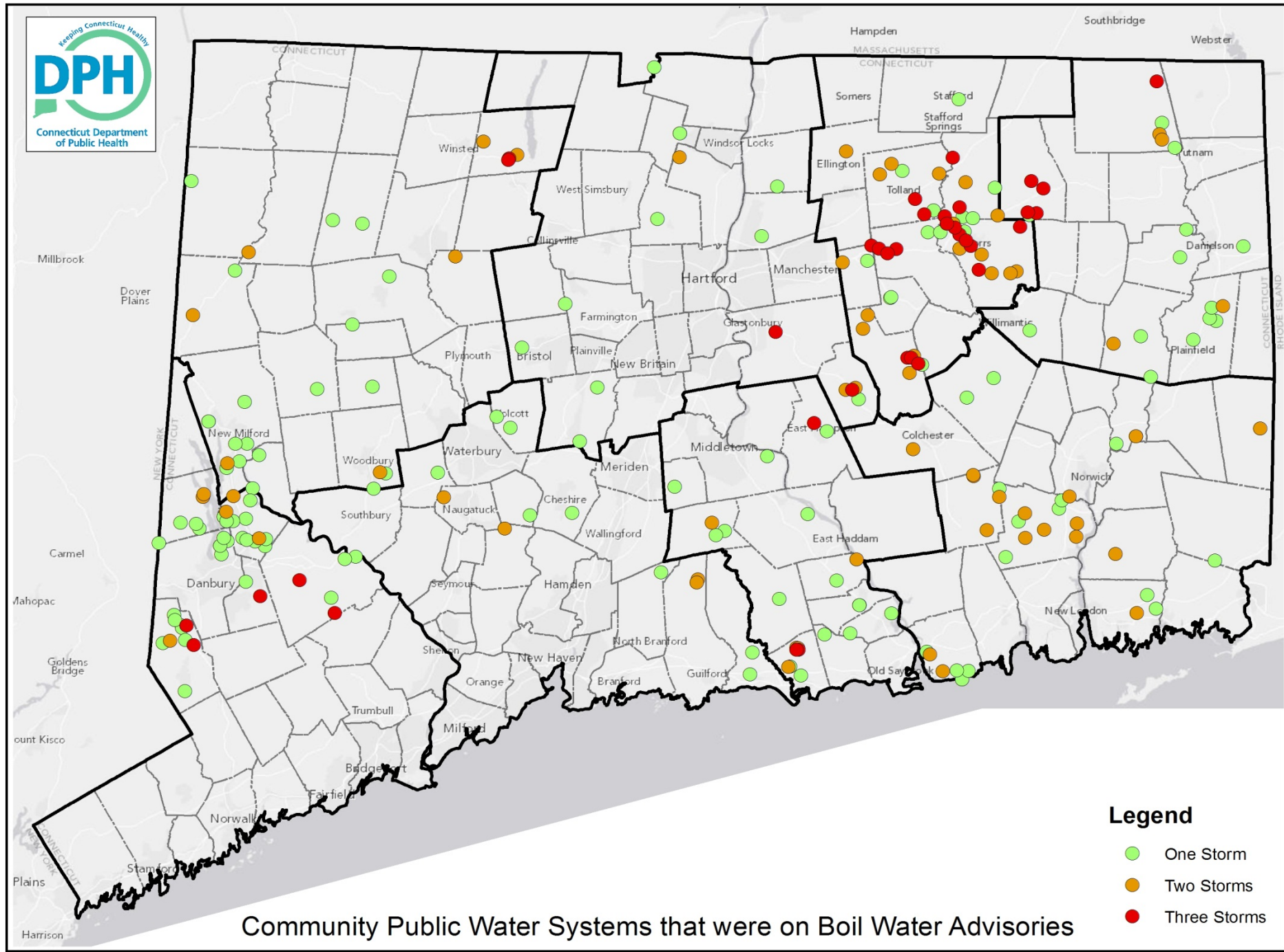
# Storm Alfred October 2011

- 💧 121 small community public water systems (cpws) on boil water advisory
- 💧 20,212 people affected
- 💧 98% of CT Residents retained their community public water
- 💧 Majority of large cpws along and north of I-84 lost street power, however operations not affected due to emergency power capacity, street power restored slowly some large cpws without street power for 8 to 9 days

# Storm Sandy October 2012

- 💧 109 small community public water systems (cpws) on boil water advisory
- 💧 14,740 people affected
- 💧 >99% of CT Residents retained their community public water
- 💧 Boil Water Advisory - 36 small cpws issued for all three storms; Most large cpws operations not affected due to emergency power capacity
- 💧 Large shoreline cpws – on generators for 8 to 9 days, priority street power restoration a concern

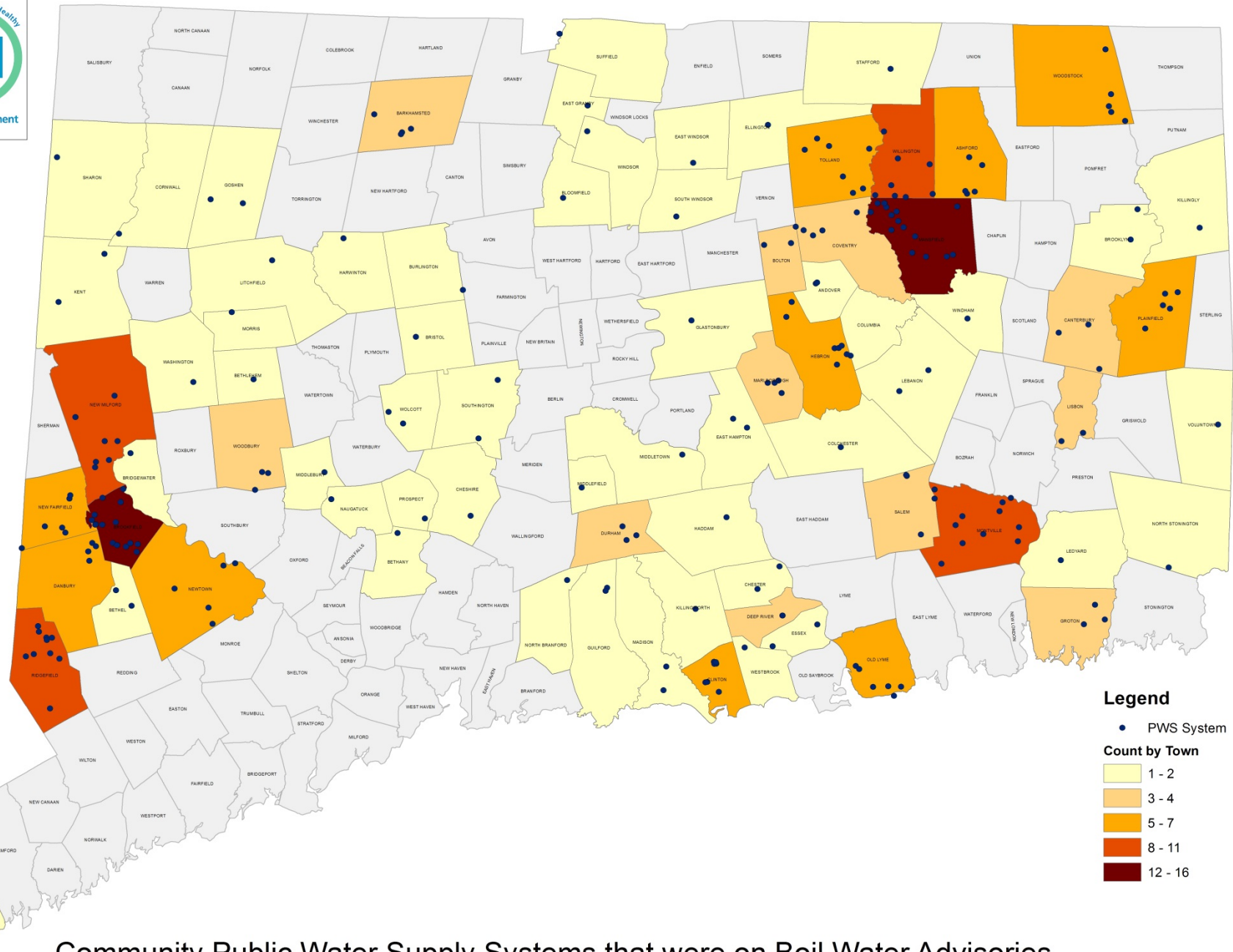




- Legend**
- One Storm
  - Two Storms
  - Three Storms

Community Public Water Systems that were on Boil Water Advisories





Community Public Water Supply Systems that were on Boil Water Advisories

# Storm Effect

## Community PWS

- 💧 Community Public Water System population effected by three storms 4,766 (36 systems)
- 💧 Small systems - lack of responsiveness, difficulty with communications (weekend and office closure), lack of planning and preparedness
- 💧 Large systems – stable through storms, systems on extended generator power, lack of priority status for power restoration, communication coordination was labor intensive



# Lessons Learned - After Actions Plan, Prevent, & Partner

- Public Health Risk Reduction – Proactive Focus

- Preparedness

- Communications



# Preparedness

## Small Community PWS

- Develop new regulations - require emergency plans and emergency power capacity, and asset management planning
- Created DWSRF Focus Point - Small system generator funding – initiated 11/2011
- Develop Training program small system owners – initiated 6/2013



# Communications

## Community PWS

- 💧 Develop new regulation concerning proper notification to the state DPH
- 💧 Create new WebEOC templates – system status updates
- 💧 Promote collaborative continuous training with State Emergency Managers, power companies, local health, and EMDs – include CT Section AWWA Committees and CTWARN



# Timeline

- 💧 Regulations – drafted & moving forward by end of 2013
- 💧 Training - continuous and ongoing
- 💧 DWSRF - Focus Point continuous for generator purchase
- 💧 Future Initiatives – analyze policies for system sustainability, consolidation, & ownership transfer





Thank You

[lori.mathieu@ct.gov](mailto:lori.mathieu@ct.gov)

Drinking Water Section