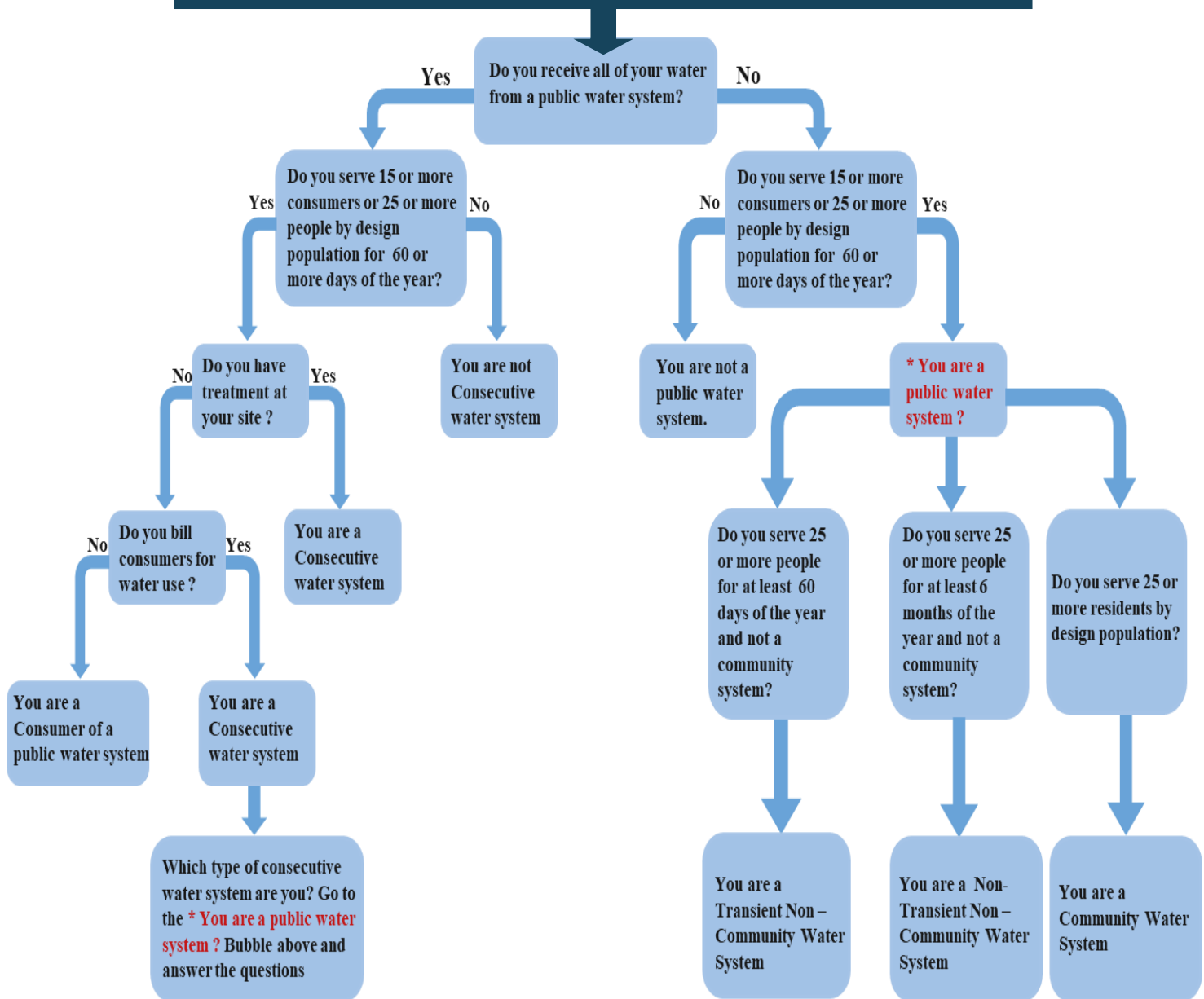


Consecutive Water System Fact Sheet

WHAT TYPE OF WATER SYSTEM ARE YOU ?



Changes that will affect your system type

All of the reasons below could change your water system from a customer of a water company into either a consecutive or public water system.

- 1.) No longer receiving all of your water from another water system by owning your own source like a well.
- 2.) Adding treatment facilities on your site or within your building, other than those for non-potable use.
- 3.) Billing individuals with a separate bill just for water either flat rate or with service meters.

If you have decided to make any changes to your system, different regulations may apply.

Contact DPH and maintain regular communication with the Department to make sure you follow all the requirements of being a public or consecutive water system.

Water Quality Monitoring Requirements

Below are the Water Quality Monitoring Requirements for system based on the type of system. This does not include the monitoring frequency and more specifics are available at the links below for the DPH website and the Regulations of CT State Agencies Section 19-13-B102.

Transient Non-Community (TNC)

Total Coliforms
Physical parameters (pH, odor, color, turbidity)
Nitrate and Nitrite
Chlorine residual
Nitrate and Nitrite

Non-Transient Non-Community (NTNC)

Requirements for TNC and
Asbestos
Inorganic chemicals (IOCs)
Volatile organic chemicals (VOCs)
Synthetic organic chemicals (SOCs)
Lead and copper
Disinfection by-products

Community Water System (CWS)

Requirements for NTNC
Radioactivity

Design Population	
Service Connection	Design Population
Single Family Dwelling (1-3 Bedrooms)	4
Single Family Dwelling (3+ Bedrooms)	4+1 for every bedroom more than 3
Multi-Dwelling 1 Bedroom	2
Multi-Dwelling 2 Bedroom	3
Multi-Dwelling 3 Bedroom	4
Multi-Dwelling 3+ Bedrooms	4+1 for every bedroom more than 3
Mobile Home	2.5
Convalescent Home	Number of Beds

Useful Links:

- [Drinking Water Section of the Department of Public Health Website](#)
- [Glossary of terms relevant to drinking water](#)
- [Regulations Section 19-13-B102](#)

Relevant Definitions:

¹Consumer means any house, hotel, apartment, store, office building, institution, manufacturing factory, other place of business, etc. to which water is supplied by a water company².

²Water Company means any individual or corporation who owns or operates any lake, reservoir, well, distributing system, or etc. that supplies water to two or more consumers or 25+ persons on a regular basis.

³Design Population means the estimated number of people per service connection⁴. How to determine this is in the chart to the right

⁴Service Connection is referring to a connection from a consumer's property to a water main.

⁵Treatment means the process of altering the physical, chemical, biological or radiological quality of source water for use as drinking water