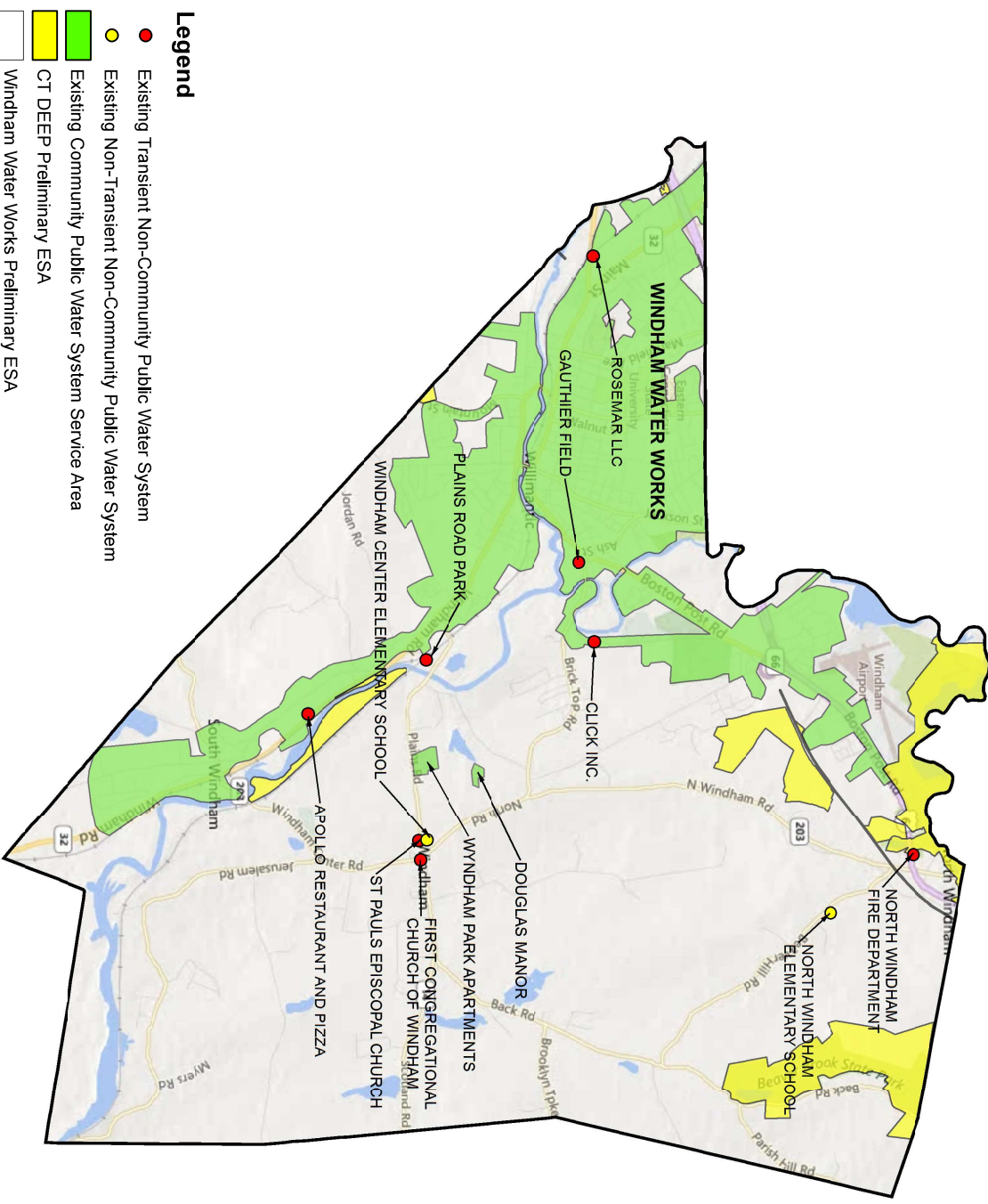


Meeting Agenda of the
Eastern Region WUCC
At the Northeastern Connecticut Council of Governments
125 Putnam Pike, Dayville, CT
January 11, 2017 at 1:00 P.M. to 3:00 P.M.

***SNOW DATE: January 25, 2017, Same Location & Time**

1. Welcome & Roll Call (5 minutes)
2. Approval of December Meeting Minutes (5 minutes)
3. Formal Correspondence (5 minutes)
4. Public Comment Period (10 minutes)
6. Summary of ESA Declaration Forms, Public Comments Received on Declarants, and Discussion (15 minutes)
5. Consider and Approve Preliminary Exclusive Service Area for the municipality of Windham as submitted by Windham Water Works and Connecticut DEEP (*see attached map: ESA Figure 1*) (10 minutes)
7. Formal Preliminary Exclusive Service Area Conflict Resolution Presentations (*see attached maps and tables – Table 2 indicates order of presentations*) (60 minutes)
8. Other Business (10 minutes)



Legend

- Existing Transient Non-Community Public Water System
- Existing Non-Transient Non-Community Public Water System
- Existing Community Public Water System Service Area
- CT DEEP Preliminary ESA
- Windham Water Works Preliminary ESA

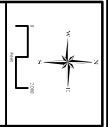
ESA Fig. 1

DATE	SCALE
December 20, 2016	1:48,000
DRAWN BY	CHECKED BY
107-2604	

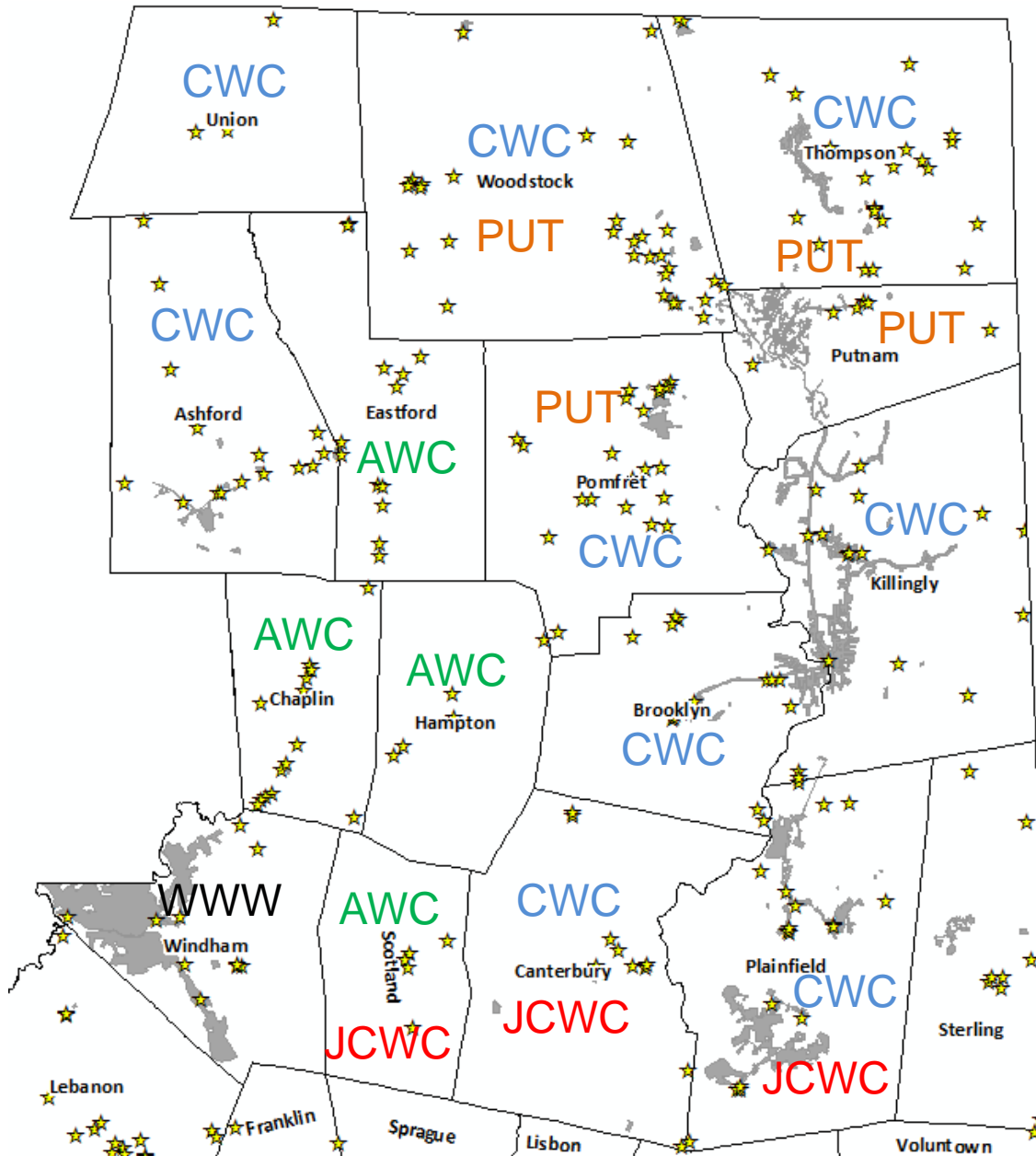
Preliminary ESA Declaration
 For Windham ESA Boundary Delineation
 Eastern PWSMA
 Eastern WUCC
 Windham, CT

DESCRIPTION	DATE	BY

MILONE & MACBROOM
 50 Ready Drive
 Cheshire, Connecticut 06410
 (203) 274-7773 Fax: (203) 274-8733
 www.miloneandmacbroom.com



ESA Declarations by Utilities to Date (General)



- Aquarion (AWC), CT Water (CWC), Jewett City (JCWC), Putnam WPCA (PUT) and Windham Water Works (WWW) have declared for unserved areas in entire municipalities (Negotiable)
- Currently conflicted areas (not including DEEP) include Canterbury, Plainfield, Pomfret, Scotland, Thompson, and Woodstock
- No declarants for Sterling at present. Sterling WPCA cannot submit until submission approved by the Utility Commission

ESA Declarations by DEEP to Date (General)



- DEEP has declared for all State Lands (potential conflicts with water utilities)

DEEP Proposed Exclusive Service Areas

Legend	
	State Forest
	State Park
	State Park Scenic Reserve
	State Park Trail
	Natural Area Preserve
	Historic Preserve
	Wildlife Area
	Wildlife Sanctuary
	DEP Owned Waterbody
	Water Access
	Flood Control
	Fish Hatchery
	Other
	WUCC Boundary
	Exclusive Assigned
	Exclusive Unassigned
	Exclusive Undefined

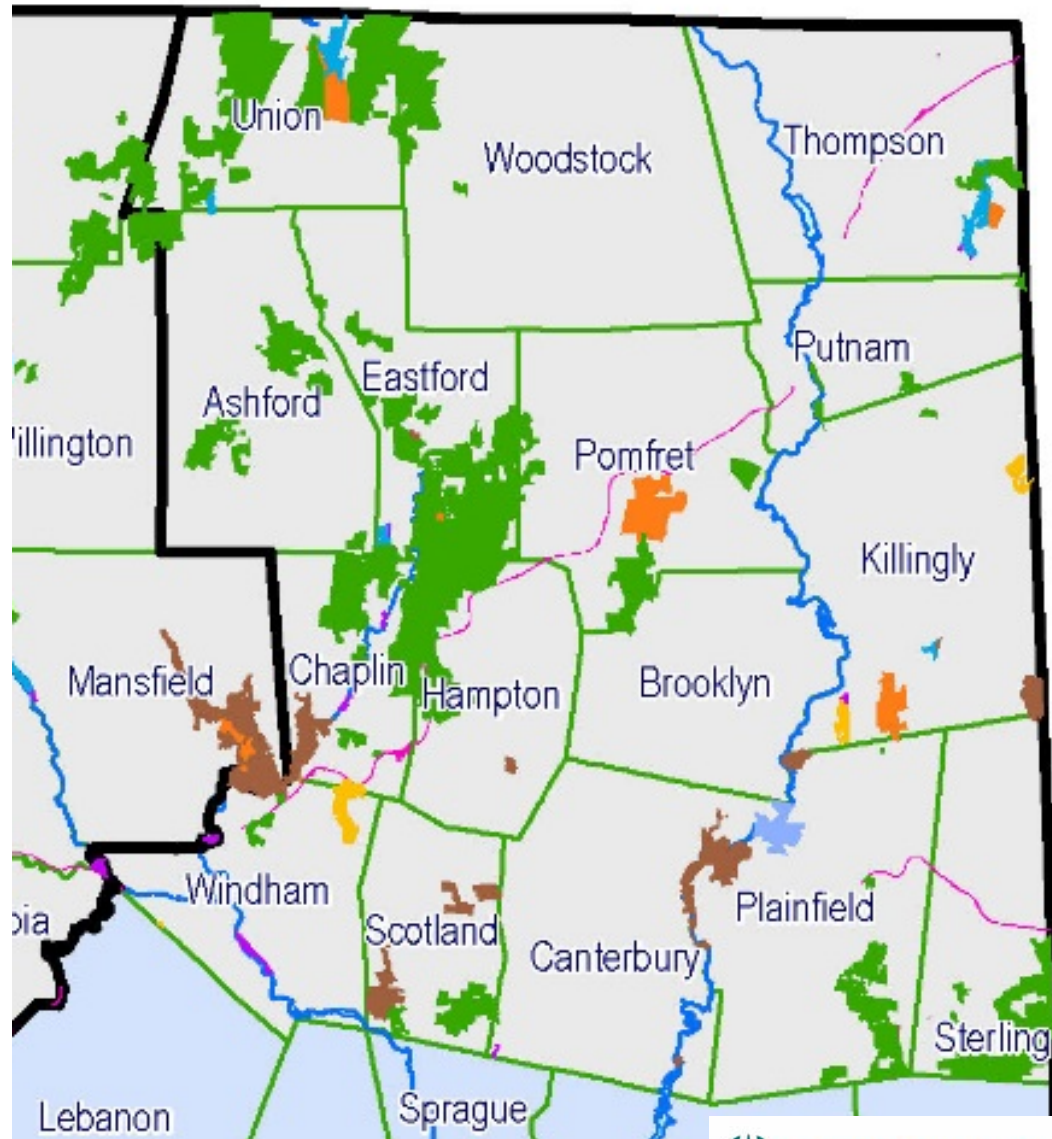


Table 1.
Eastern WUCC ESA Declaration Summary for Correspondence Received by End of Day, 12/15/16

Municipality	CT DEEP ESA Declared	ESA Declarant 2*	ESA Declarant 3*	Conflict(s) or Coordination Needed
Ashford	Yes (properties throughout)	Connecticut Water Company		Yes
Brooklyn	Yes (northwest properties)	Connecticut Water Company		Yes
Canterbury	Yes (properties throughout)	Connecticut Water Company	Jewett City Water Company	Yes
Chaplin	Yes (properties throughout and trail)	Aquarion Water Company		Yes
Eastford	Yes (most of west and southern part of town)	Aquarion Water Company		Yes
Hampton	Yes (northwest properties and trail)	Aquarion Water Company		Yes
Killingly	Yes (properties throughout near boundaries)	Connecticut Water Company		Yes
Plainfield	Yes (properties throughout and trail)	Connecticut Water Company	Jewett City Water Company	Yes
Pomfret	Yes (south central and eastern properties)	Connecticut Water Company	Putnam WPCA	Yes
Putnam	Yes (southern properties, western trail)	Putnam WPCA		Yes
Scotland	Yes (properties throughout)	Jewett City Water Company	Aquarion Water Company (possibly rescinding)	Yes
Sterling	Yes (central trail and southern properties)	Possibly Town of Sterling (commission meeting 12/21/16)		Maybe
Thompson	Yes (eastern properties, trail)	Connecticut Water Company	Putnam WPCA	Yes
Union	Yes (properties throughout)	Connecticut Water Company		Yes
Windham	Yes (northern properties and those on Shetucket River and trail)	Windham Water Works (all unserved areas except areas claimed by DEEP)		No
Woodstock	Yes (northwestern properties)	Connecticut Water Company	Putnam WPCA	Yes

*In general, declarants other than DEEP declared for all areas currently unserved by public water systems in an entire municipality except as noted.

Table 2.
Presentation order for Formal Conflict Resolution Procedures
Beginning January 11th, 2017

1. Municipalities where Connecticut Water Company is in conflict with only Connecticut DEEP
 - Municipalities: Ashford, Brooklyn, Canterbury, Killingly, Union
 - Presentation Order: Connecticut DEEP, Connecticut Water Company

2. Municipalities where Aquarion Water Company is in conflict with only Connecticut DEEP
 - Municipalities: Chaplin, Eastford, Hampton
 - Presentation Order: Aquarion Water Company, Connecticut DEEP

3. Municipalities where Putnam WPCA is in conflict with only Connecticut DEEP
 - Municipalities: Putnam
 - Presentation Order: Connecticut DEEP, Putnam WPCA

4. Municipalities where Connecticut Water Company, Jewett City Water Company, and Connecticut DEEP are in conflict
 - Municipalities: Plainfield
 - Presentation Order: Connecticut Water Company, Connecticut DEEP, Jewett City Water Company

5. Municipalities where Connecticut Water Company, Putnam WPCA, and Connecticut DEEP are in conflict
 - Municipalities: Pomfret, Thompson, Woodstock
 - Presentation Order: Putnam WPCA, Connecticut DEEP, Connecticut Water Company

6. Municipalities where Jewett City Water Company, Aquarion Water Company, and Connecticut DEEP are in conflict
 - Municipalities: Scotland
 - Presentation Order: Jewett City Water Company, Connecticut DEEP, Aquarion Water Company

7. Municipalities where potential conflicts may exist between Connecticut DEEP and others.
 - Municipalities: Sterling
 - Presentation Order: Connecticut DEEP, others

If additional declarants are realized, the presentation order will be amended. For example, if an additional declarant was realized in Pomfret before January 11th, the municipality of Pomfret would be removed from consideration under presentation #5 and added to the order as Presentation #8.