



Monthly Meeting #7

Coordinated Water System Plan Western Region

Brookfield Town Hall, Brookfield, Connecticut | December 13, 2016

Agenda



1. Welcome & Roll Call (5 minutes)
2. Approval of Meeting Minutes (5 minutes)
3. Review of Formal Correspondence (5 minutes)
4. Public Comment Period (10 minutes)
5. Water Supply Assessment – Discussion and Vote (20 minutes)
6. Summary of ESA Process and Schedule (10 minutes)
7. Summary of ESA Declaration Forms and Schedule Conflict Presentations (55 minutes)
8. Other Business (10 minutes)

Agenda



1. **Welcome & Roll Call (5 minutes)**
2. Approval of Meeting Minutes (5 minutes)
3. Review of Formal Correspondence (5 minutes)
4. Public Comment Period (10 minutes)
5. Water Supply Assessment – Discussion and Vote (20 minutes)
6. Summary of ESA Process and Schedule (10 minutes)
7. Summary of ESA Declaration Forms and Schedule Conflict Presentations (55 minutes)
8. Other Business (10 minutes)

Taking Stock

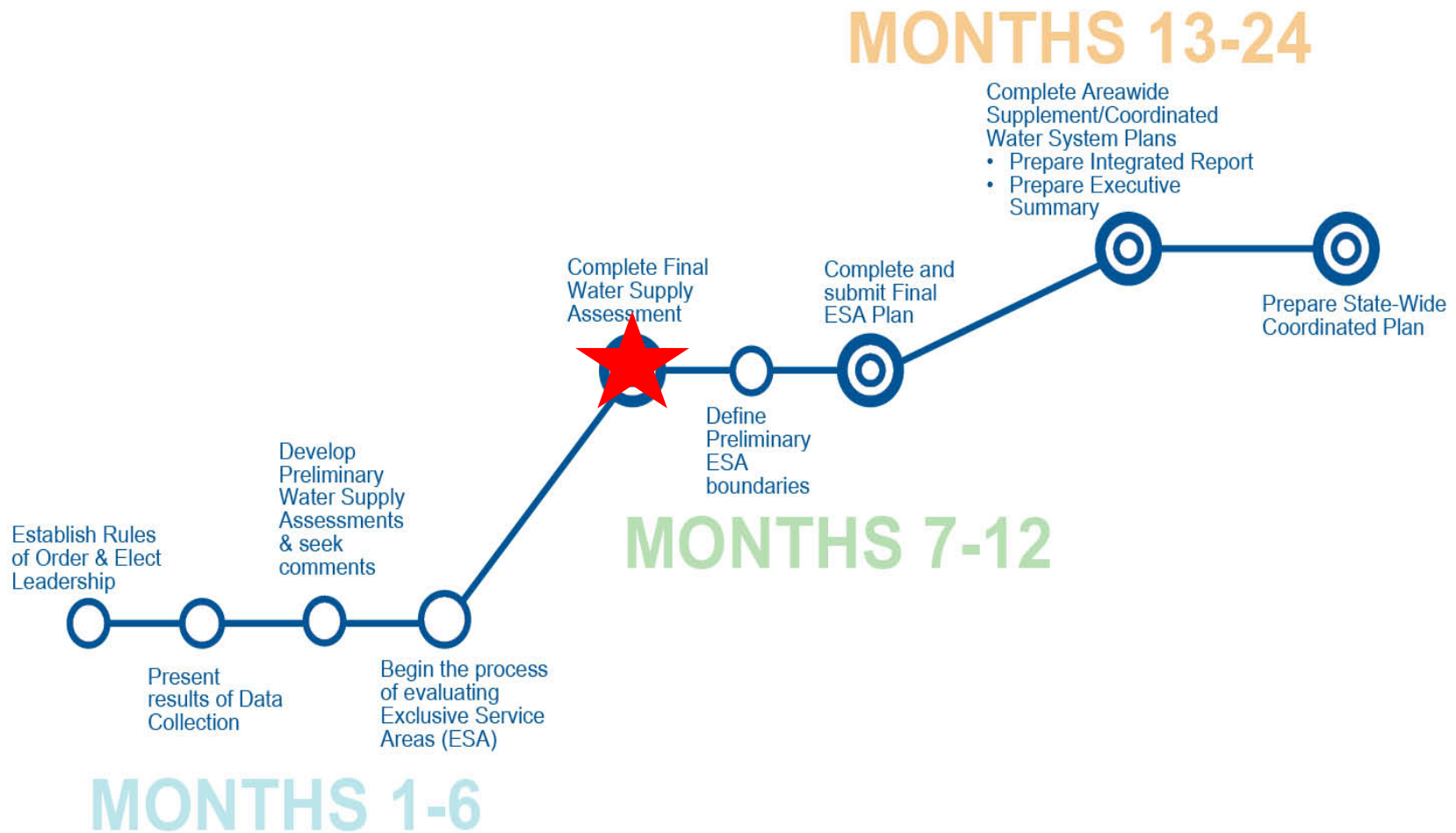


- ***What Have We Accomplished?***
 - ✓ The Water Supply Assessment was completed
 - ✓ Exclusive Service Area (ESA) affirmations and declarations have been received

- ***What Are We Doing Today?***
 - ✓ Approving the Final Water Supply Assessment report for submission to DPH
 - ✓ Discussing ESA Declarations received
 - ✓ Determining how to handle potential conflicts

- ***What's Next?***
 - ✓ Administer the ESA process
 - ✓ Begin thinking about the Integrated Report

WUCC Time Frame



Agenda



1. Welcome & Roll Call (5 minutes)
2. **Approval of Meeting Minutes (5 minutes)**
3. Review of Formal Correspondence (5 minutes)
4. Public Comment Period (10 minutes)
5. Water Supply Assessment – Discussion and Vote (20 minutes)
6. Summary of ESA Process and Schedule (10 minutes)
7. Summary of ESA Declaration Forms and Schedule Conflict Presentations (55 minutes)
8. Other Business (10 minutes)

Agenda



1. Welcome & Roll Call (5 minutes)
2. Approval of Meeting Minutes (5 minutes)
3. **Review of Formal Correspondence (5 minutes)**
4. Public Comment Period (10 minutes)
5. Water Supply Assessment – Discussion and Vote (20 minutes)
6. Summary of ESA Process and Schedule (10 minutes)
7. Summary of ESA Declaration Forms and Schedule Conflict Presentations (55 minutes)
8. Other Business (10 minutes)

Correspondence since 11/8/16 Meeting



1. Additional letters about the WUCCs and statewide water planning, droughts, prioritization of water for citizens, etc.
2. 11/16/16 – Circular letter from DPH with announcement of ESA webinar
3. 12/1/16 – Notification of final draft of Final Water Supply Assessment for review by WUCC members

Agenda



1. Welcome & Roll Call (5 minutes)
2. Approval of Meeting Minutes (5 minutes)
3. Review of Formal Correspondence (5 minutes)
- 4. Public Comment Period (10 minutes)**
5. Water Supply Assessment – Discussion and Vote (20 minutes)
6. Summary of ESA Process and Schedule (10 minutes)
7. Summary of ESA Declaration Forms and Schedule Conflict Presentations (55 minutes)
8. Other Business (10 minutes)

Agenda



1. Welcome & Roll Call (5 minutes)
2. Approval of Meeting Minutes (5 minutes)
3. Review of Formal Correspondence (5 minutes)
4. Public Comment Period (10 minutes)
5. **Water Supply Assessment – Discussion and Vote (20 minutes)**
6. Summary of ESA Process and Schedule (10 minutes)
7. Summary of ESA Declaration Forms and Schedule Conflict Presentations (55 minutes)
8. Other Business (10 minutes)

Changes from First Draft of Final WSA



Changes in **green** font

- Added Executive summary
- Table of Contents updates
- Arsenic and Uranium mapping, Radon summary
- Added all interconnections to Table 2-9
- Extended SDC population projections to 2040 to match DOT
- Replaced Housing Permit table (Table 5-7) with Housing Inventory
- Remaining corrections and clarifications

Water Supply Assessment Schedule



Action	Timeline
Adoption of Final WSA	December 13, 2016 Meeting
Submission of Final WSA to DPH	December 14, 2016

- Minor edits from MetroCOG and Danbury:
 - ✓ Fairfield POCD adopted in 2016
 - ✓ Table 2-5 edits for Danbury with reference to 2006 WSP edits

Final Water Supply Assessment

- Discussion
- Motion to Approve WSA and Submit to DPH on 12/14/16



Agenda



1. Welcome & Roll Call (5 minutes)
2. Approval of Meeting Minutes (5 minutes)
3. Review of Formal Correspondence (5 minutes)
4. Public Comment Period (10 minutes)
5. Water Supply Assessment – Discussion and Vote (20 minutes)
- 6. Summary of ESA Process and Schedule (10 minutes)**
7. Summary of ESA Declaration Forms and Schedule Conflict Presentations (55 minutes)
8. Other Business (10 minutes)

ESA Procedures (Process Document)



- Section I - Introduction
- Section II – Public Notification Requirements / Meetings
- Section III – Assignment of Initial ESA Boundaries
- Section IV – Modification of Established ESA Boundaries
- Section V – Reporting

Section II



- ESA boundaries may only be established or modified at a properly noticed WUCC meeting (agenda and maps published 14 days in advance)
- Quorum must be present per Bylaws
- Provisions for conflicts of interest for WUCC Officers

Section III – Assignment of Initial ESAs



- Public water systems maintain existing service areas
- No new service areas or extensions which create duplication or overlap of services
- Discusses Declaration Forms, Meetings, Public Comment
- Assignment requires a majority vote
- Encourages declarants to come to resolution
- Conflict resolution procedures
 - Presentations / Scoring Rubric
 - Alternatives
 - Vote on a proposal or send to mediation
 - PURA recommendation
 - DPH assignment
 - Appeals

Additional Sections of Procedures



- Section IV – Modification of ESAs
 - Type A – Modification Between Two ESA Holders
 - Type B – Modification Due to Creation of New Public Water System
 - Type C – Modification Due to Appeal
 - Type D – Modification Due to Other Reasons

- Section V – Reporting and Filing with DPH

ESA Process Draft Schedule



Action	Timeline
Summary of Declaration Forms and Schedule the Presentations for Conflicted Declarants	December 13, 2016 Meeting
Conflict Resolution outside WUCC meetings	December 14, 2016 through February 14, 2017
Presentations by Conflicted Declarants WUCC to begin preliminarily approving ESAs Begin requesting PURA recommendations if needed Process Boundary Changes if time allows	January 10 and February 14, 2017 Meetings
Approve Preliminary ESA Document for Public Review Process Boundary Changes if time allows	March 14, 2017 Meeting
30-Day Public Comment Period	March 15, 2017 through April 14, 2017
Final PURA Recommendations due; discussion Refer remaining conflicts to DPH Process Boundary Changes if time allows	April 11, 2017 Meeting
Additional ESA discussions and resolutions Process Boundary Changes if time allows	May 9, 2017 Meeting
Approval of ESA Document	June 13, 2017 Meeting

Agenda



1. Welcome & Roll Call (5 minutes)
2. Approval of Meeting Minutes (5 minutes)
3. Review of Formal Correspondence (5 minutes)
4. Public Comment Period (10 minutes)
5. Water Supply Assessment – Discussion and Vote (20 minutes)
6. Summary of ESA Process and Schedule (10 minutes)
7. **Summary of ESA Declaration Forms and Schedule Conflict Presentations (55 minutes)**
8. Other Business (10 minutes)

Summary of ESA Declarations



The following types of declarations have been made:

1. Water utility and municipal declarations
 - Aquarion
 - Town of Bethlehem
 - Connecticut Water Company
 - First Taxing District Water Department
 - Town of Morris
 - South Norwalk Electric & Water
 - Torrington Water Company
 - Waterbury Water Bureau
 - Winsted Water Works
 - Wolcott Water & Sewer
 - Woodlake Taxing District (will proceed as boundary change)

Summary of ESA Declarations

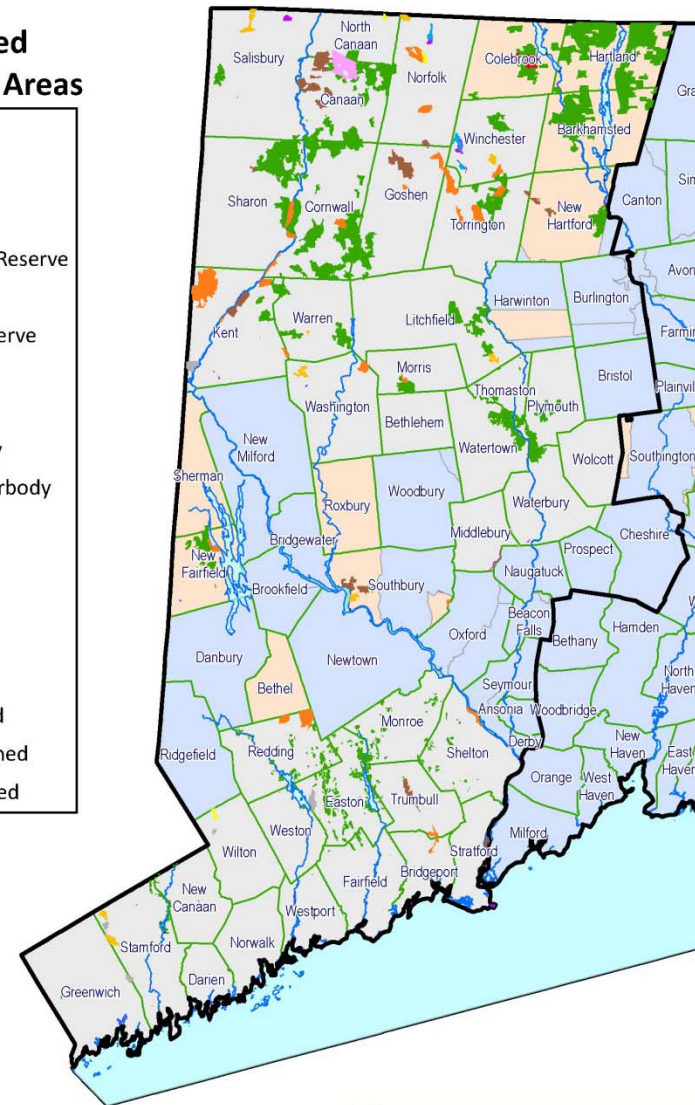


The following types of declarations have been made:

2. DEEP declarations for DEEP-owned and DEEP-maintained State conservation lands

DEEP Proposed Exclusive Service Areas

Legend	
	State Forest
	State Park
	State Park Scenic Reserve
	State Park Trail
	Natural Area Preserve
	Historic Preserve
	Wildlife Area
	Wildlife Sanctuary
	DEP Owned Waterbody
	Water Access
	Flood Control
	Fish Hatchery
	Other
	WUCC Boundary
	Exclusive Assigned
	Exclusive Unassigned
	Exclusive Undefined

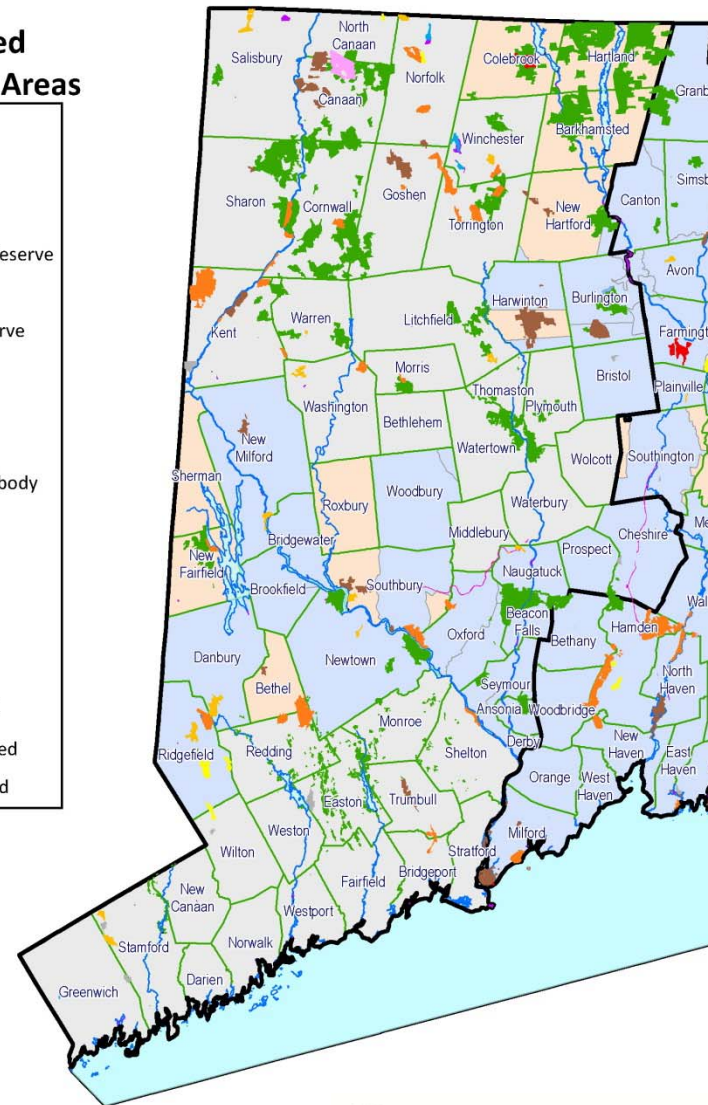


Summary of ESA Declarations

DEEP also wishes to claim ESAs where other ESAs exist

- *These will be processed as boundary changes*
- *Deferred to another meeting*

DEEP Proposed Exclusive Service Areas



Summary of ESA Declarations



The following types of declarations have been made:

3. Municipalities that have requested remaining unassigned:
 - Barkhamsted (except for western Route 44 corridor)
 - Canaan
 - Colebrook
 - Cornwall
 - Goshen
 - Hartland
 - Kent (except for “Village District”)
 - Litchfield
 - Salisbury
 - Washington

Summary of ESA Declarations



The following types of declarations have been made:

4. Municipalities that have requested that another declarant receive the ESA for their town
 - Norfolk – Aquarion should be granted ESA
 - North Canaan – Aquarion should be granted ESA

Summary of ESA Declarations



The following types of conflicts are present:

1. Water utilities declaring ESAs in towns that have asked to remain unassigned (examples: Canaan, Colebrook, Kent, Salisbury)
2. DEEP declaring ESAs in towns that have asked to remain unassigned (examples: Canaan, Colebrook, Kent, Salisbury)
3. Water utilities and towns declaring overlapping areas (example: Morris)
4. DEEP and water utilities declaring overlapping areas (examples: Norfolk, Waterbury, Winsted Water Works)
5. DEEP and towns declaring overlapping areas (example: Morris)
6. Combinations of the above

Goshen leads the pack with four entities involved: Aquarion, Torrington Water Company, DEEP, and the Town [wishing to remain unassigned]

ESA Next Steps



How Do We Resolve Conflicts in 40 Towns?

1. DEEP homework for 12/14/16 through 1/9/17
 - DEEP to determine whether all its claims are needed
 - *“Bridgeport approach” vs. “Canaan approach”*
 - DEEP to work with towns
 - DEEP to work with water utilities
2. Water utility homework for 12/14/16 through 1/9/17
 - Aquarion to work with all claimed towns and DEEP
 - Torrington Water Co. to work with claimed towns and DEEP, Aquarion, and Winsted Water Works
 - Aquarion and Wolcott to work together
 - First Taxing District and SNEW to work together
3. Begin hearing presentations and making decisions as a committee in January 2017

ESA Next Steps



Note: Presentations by each declarant will address the seven specific exclusive service area boundary considerations as outlined in Section 25-33h-1(d)(B)(ii) of the Regulations of Connecticut State Agencies. See declaration form for more detail on the issues considered under each item. **THIS FORM IS FOR USE BY WUCC MEMBERS AS GUIDANCE TO HELP INFORM THAT MEMBER’S EVENTUAL VOTE ON A CONFLICTED AREA. IT WILL NOT BE HANDED INTO THE WUCC OR DISTRIBUTED PUBLICALLY.**

Ratings are scored as follows:

1 = Unsited; 2 = Poorly Suited; 3 = Moderately Suited; 4 = Well Suited; and 5 = Very Well Suited

Item	Description	Rating for	Rating for	Rating for	Rating for
		(Declarant #1)	(Declarant #2)	(Declarant #3)	(Declarant #4)
A.	“Existing Service Area” Rating				
B.	“Land Use Plans, Zoning Regulations, and Growth Trends” Rating				
C.	“Physical Limitations to Water Service” Rating				
D.	“Political Boundaries” Rating				
E.	“Water Company Rights as Established by Statute, Special Act, or Administrative Decision” Rating				
F.	“System Hydraulics, Including Potential Elevations and Pressure Zones” Rating				
G.	“Ability of a Water System to Provide a Pure and Adequate Supply of Water Now and Into the Future” Rating				
H.	Miscellaneous Rating Based Upon All Available Information and Presentation				
	Total				

ESA Next Steps



Potential January meeting structure

1. Approach #1 – Presentations by Declarant

- DEEP presentation
- Aquarion presentation
- Torrington Water Company presentation
- Others (SNEW, First Taxing District, Wolcott, Morris)
- COG presentations for member towns that wish to remain unassigned
- *Assumes that some conflicts are resolved ahead of time*

2. Approach #2 – Geographic Presentations

- Town-by-Town presentations with declarants in attendance for each town
- *Assumes that some conflicts are resolved ahead of time*

ESA Next Steps

- **Discussion**
 1. **Approach #1 – Presentations by Type**
 - Pros
 - Cons
 2. **Approach #2 – Geographic Presentations**
 - Pros
 - Cons
- **Decision**
- **Can Conflicts be Resolved Today?**



Agenda



1. Welcome & Roll Call (5 minutes)
2. Approval of Meeting Minutes (5 minutes)
3. Review of Formal Correspondence (5 minutes)
4. Public Comment Period (10 minutes)
5. Water Supply Assessment – Discussion and Vote (20 minutes)
6. Summary of ESA Process and Schedule (10 minutes)
7. Summary of ESA Declaration Forms and Schedule Conflict Presentations (55 minutes)
8. **Other Business (10 minutes)**

Other Business

- Suggestions for an inclement weather policy

