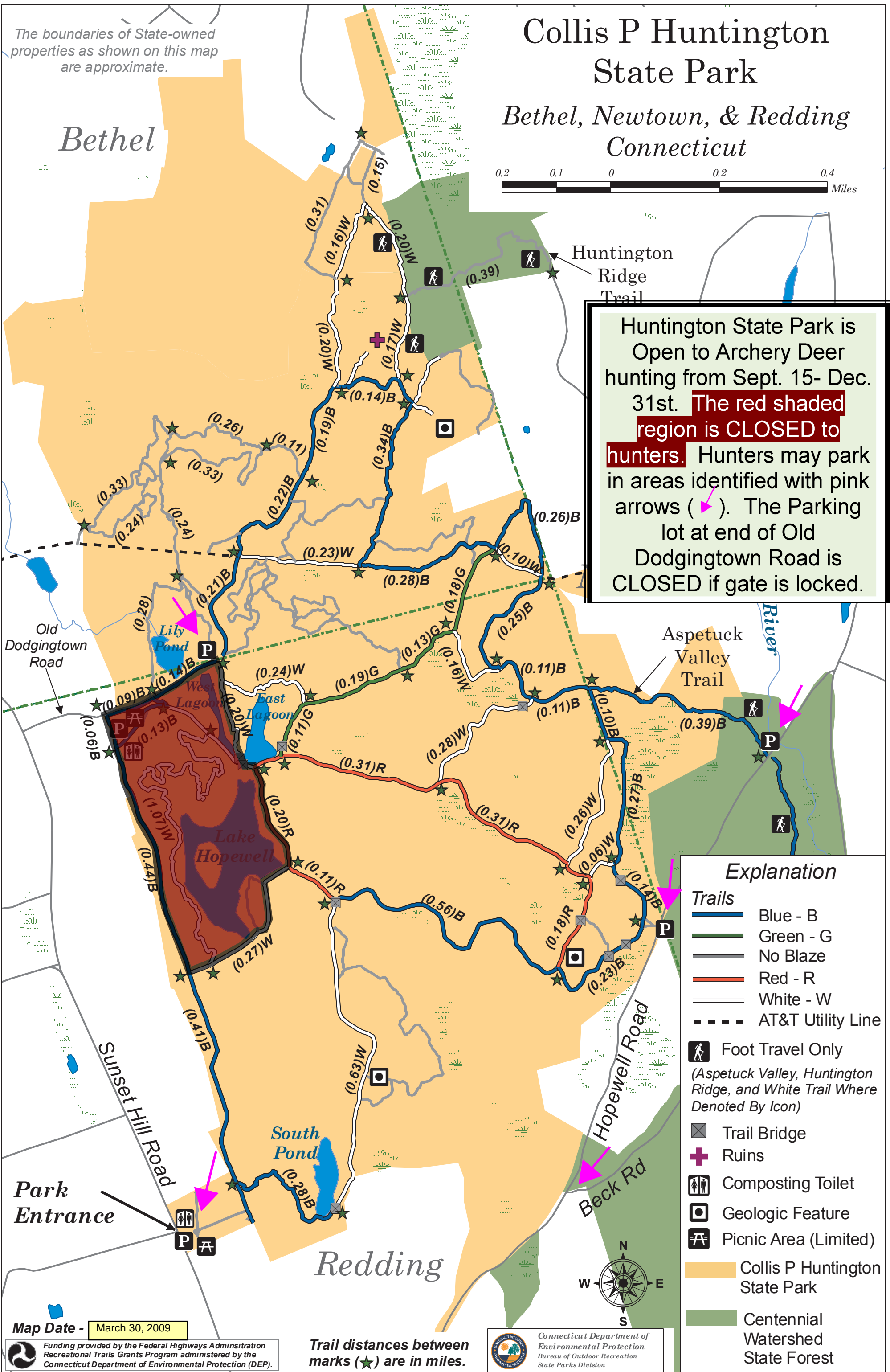
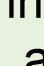



The boundaries of State-owned properties as shown on this map are approximate.

Collis P Huntington State Park

Bethel, Newtown, & Redding
Connecticut



Huntington State Park is Open to Archery Deer hunting from Sept. 15- Dec. 31st. **The red shaded region is CLOSED to hunters.** Hunters may park in areas identified with pink arrows (). The Parking lot at end of Old Dodgingtown Road is CLOSED if gate is locked.

Explanation	
Trails	
	Blue - B
	Green - G
	No Blaze
	Red - R
	White - W
	AT&T Utility Line
	Foot Travel Only (Aspetuck Valley, Huntington Ridge, and White Trail Where Denoted By Icon)
	Trail Bridge
	Ruins
	Composting Toilet
	Geologic Feature
	Picnic Area (Limited)
	Collis P Huntington State Park
	Centennial Watershed State Forest

Map Date - March 30, 2009

Funding provided by the Federal Highways Administration Recreational Trails Grants Program administered by the Connecticut Department of Environmental Protection (DEP).

Trail distances between marks (★) are in miles.

Connecticut Department of Environmental Protection
Bureau of Outdoor Recreation
State Parks Division