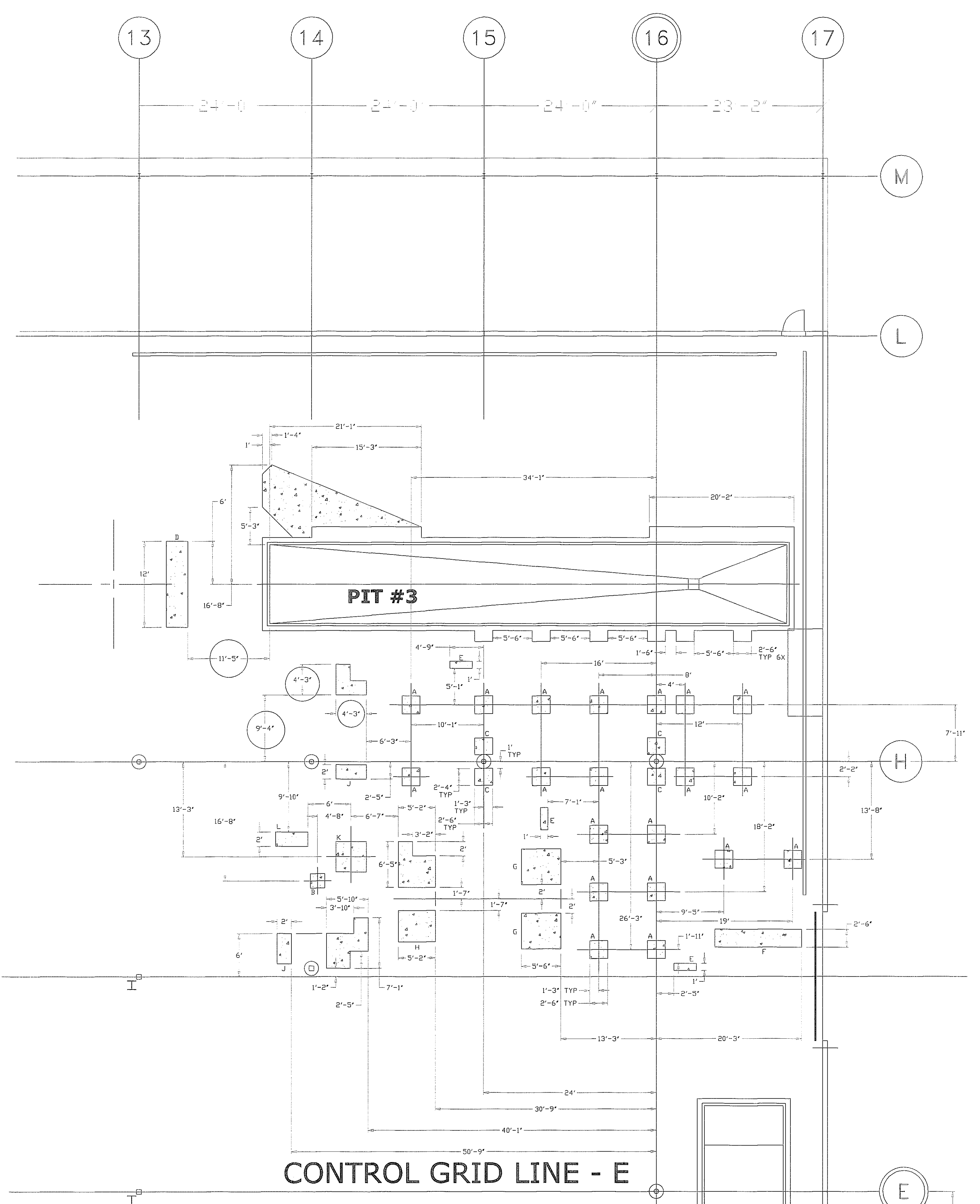
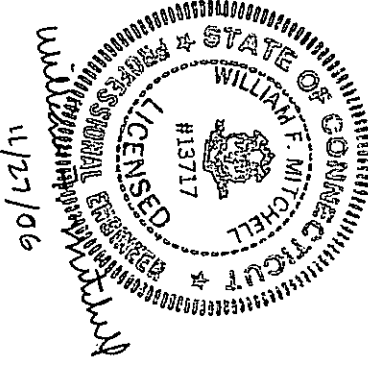


NORTH



COLUMN FOOTING SCHEDULE (12" DEEP PER NOTE #3, SHEETS 1&2)

TYPE	SIZE	QTY	SHAPE
A	2'-6" X 2'-6"	25	SQUARE
B	2'-0" X 2'-0"	1	SQUARE
C	2'-6" X 2'-4"	4	RECTANGLE
D	3'-0" X 12'-0"	1	RECTANGLE
E	3'-2" X 1'-0"	3	RECTANGLE
F	12'-1" X 2'-6"	1	RECTANGLE
G	5'-0" X 5'-6"	2	RECTANGLE
H	5'-2" X 4'-5"	1	RECTANGLE
J	2'-0" X 4'-3"	2	RECTANGLE
K	4'-3" X 4'-3"	1	SQUARE
L	2'-0" X 4'-6"	1	RECTANGLE



PIT AND FOUNDATION LAYOUT

CUSTOMER: FCR / CASELLA WASTE INC.

PROJECT NAME AND LOCATION: MATERIAL RECOVERY FACILITY FCR / CASELLA WASTE INC. 211 MURPHY ROAD HARTFORD, CT 06114-2105

ENGINEER: M.D. / BMK DATE: 06/01/06

CUSTOMER APPROVAL: [Signature] DATE: [Blank] APPROVED BY: [Signature] SHEET NO 3 OF 4

DRAWING NO: 1809P102 SCALE: 1/8"=1'0"

CP MANUFACTURING INC.

1300 WILSON AVENUE - NATIONAL CITY, CA 91950

PHONE: 619-477-3175 FAX: 619-477-3426

REV	DESCRIPTION	DATE	BY
6	CLASSIFIED WORKING BY NOTE #3, ADDED SHEET #3, REMOVED FOOTINGS FOR CONTAINER & GLASS LINE (TO BE REVISSED UNDER NOTE #6)	06/01/06	BMK
7	ADDED FOOTING FOR CONTAINER & GLASS LINE, REVISED PIT #3, ADDED SHEET #4	01/01/06	EA
3	ADDED PIT WITH FROM 12 TO 11, SHIFTER FOR REMOVAL THROUGH ADDED RETAIN OF PIN REMOVAL THROUGH (SEE SECTION C-CL)	03/12/06	BMK
4	ADDED CONTROL GRID 16 AND LOCATED PITS 2 & 3 FROM IT, ADDED POINT LOADS FOR PITS 2 & 3	02/15/06	BMK
5	*FOR CONSTRUCTION RELEASE (SEE FIELD LAYOUT) REMOVED FOOTINGS FOR FIBER LINE, REVISED NOTE #3, ADDED SECTION B-B	02/21/06	BMK

BUILDING

CONTROL GRID LINE - 16

CONTROL GRID LINE - E