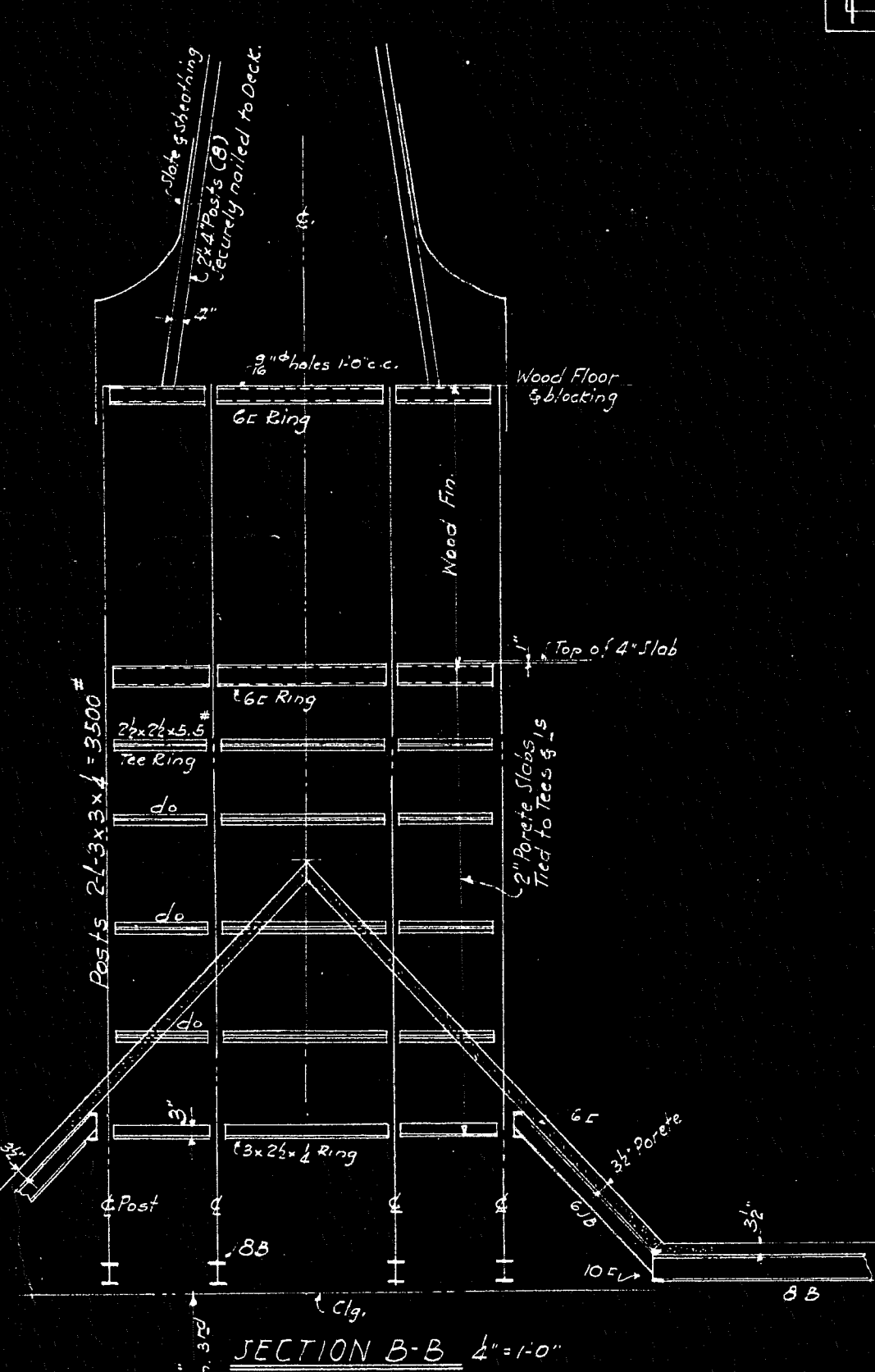
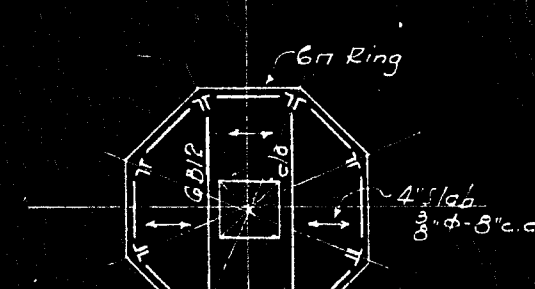
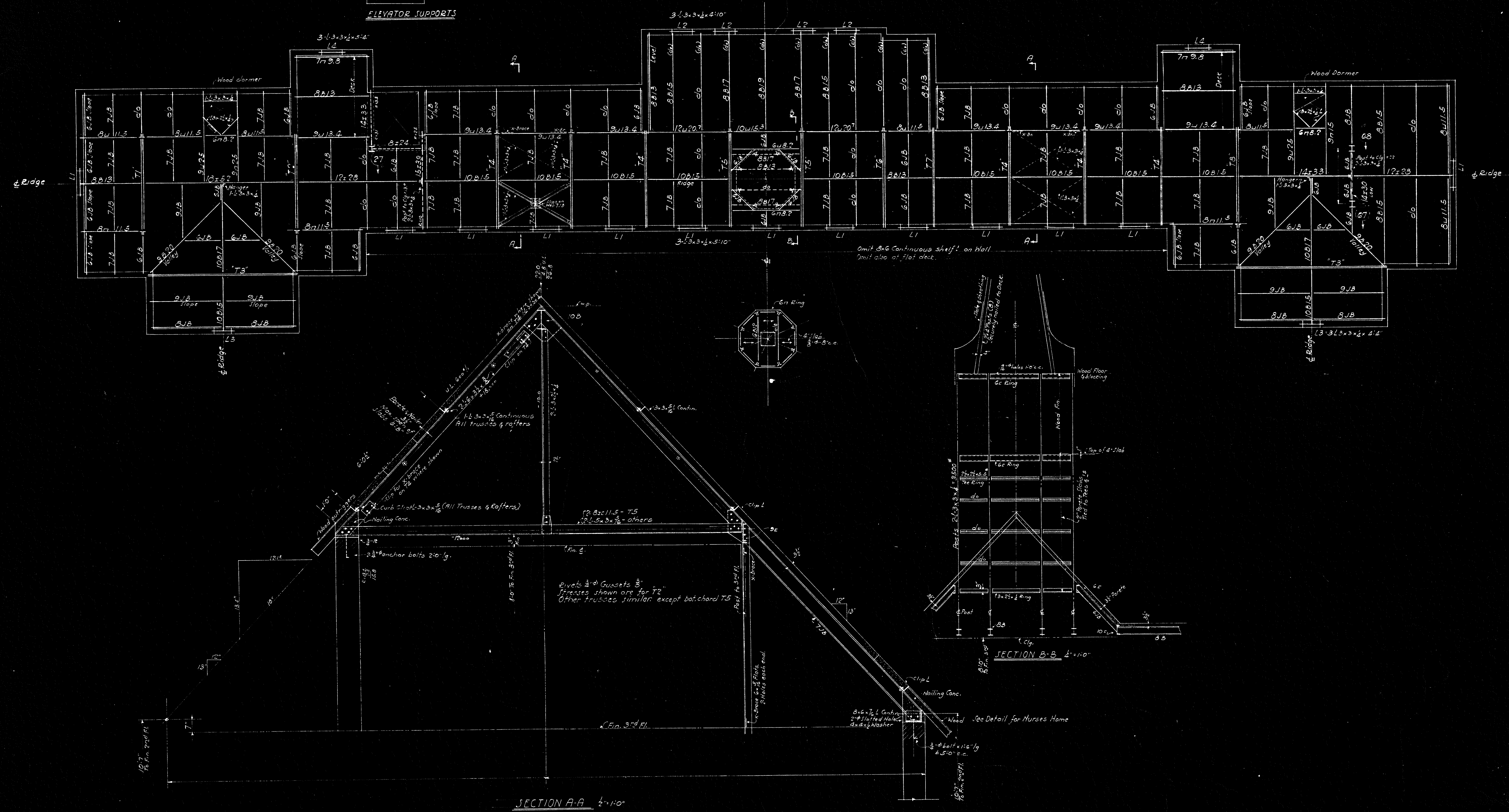
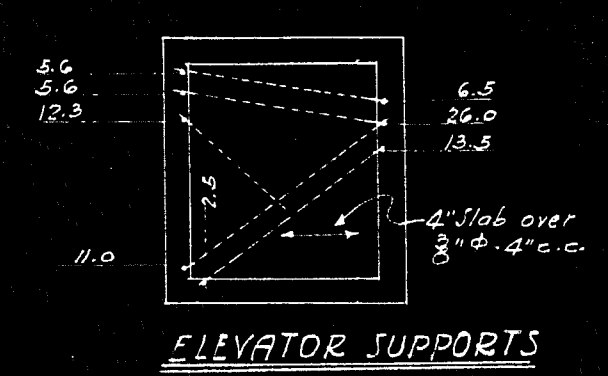


THE SEASIDE HOSPITAL  
 WATERFORD-CONN.  
 TITLE  
 BASEMENT AND  
 FOUNDATION PLAN  
 CABOT GILBERT, INC. ARCHITECTS  
 241 BROADWAY, NEW YORK

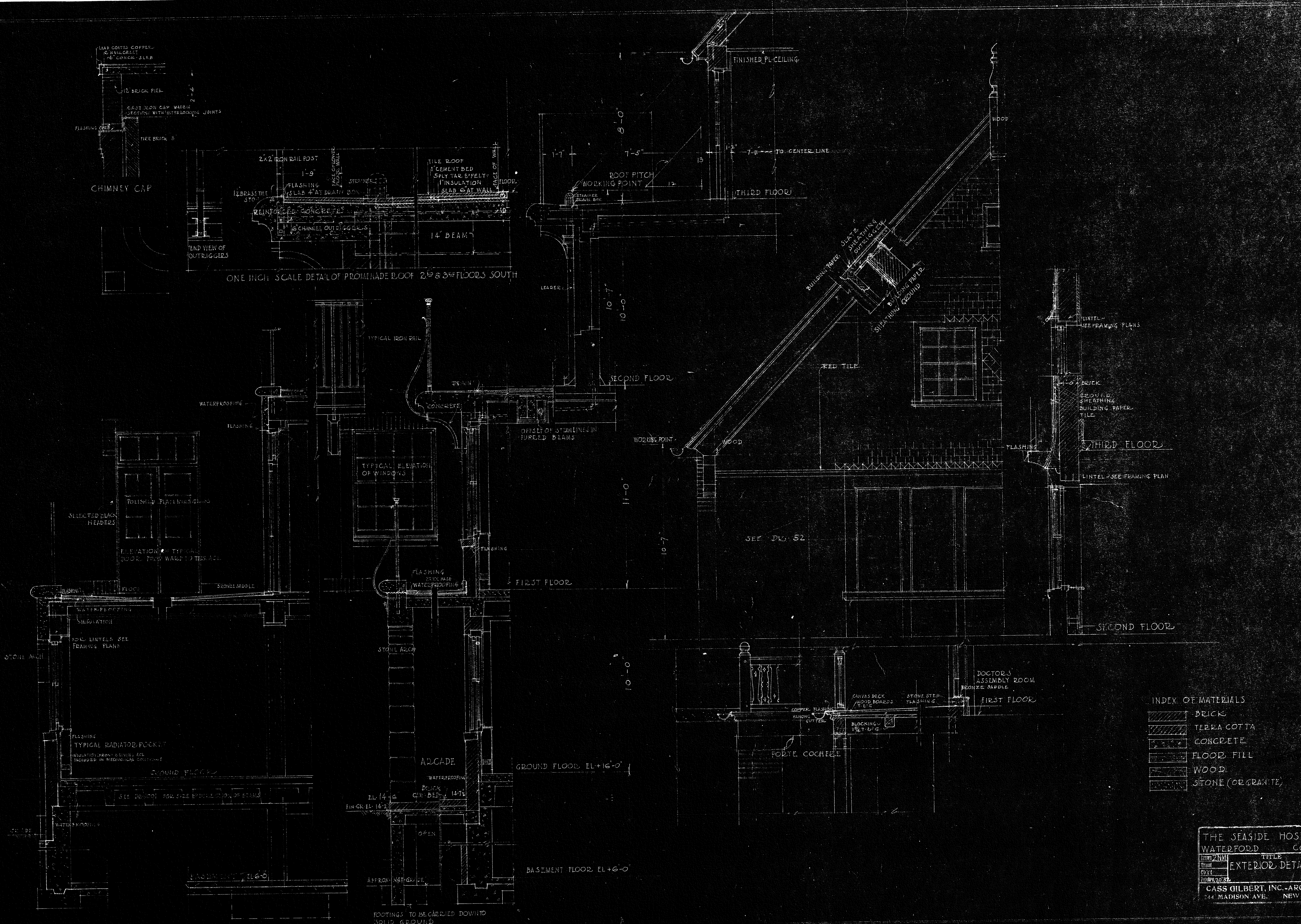




SECTION A-A 1/2"=1'-0"

THE SEASIDE HOSPITAL WATERFORD CONN.	
AME	1005
AME	SCALE
4-19-32	1"=10'
JAMES H. HARRIS ARCHITECTS 244 MADISON AVE. NEW YORK N.Y.	





INDEX OF MATERIALS

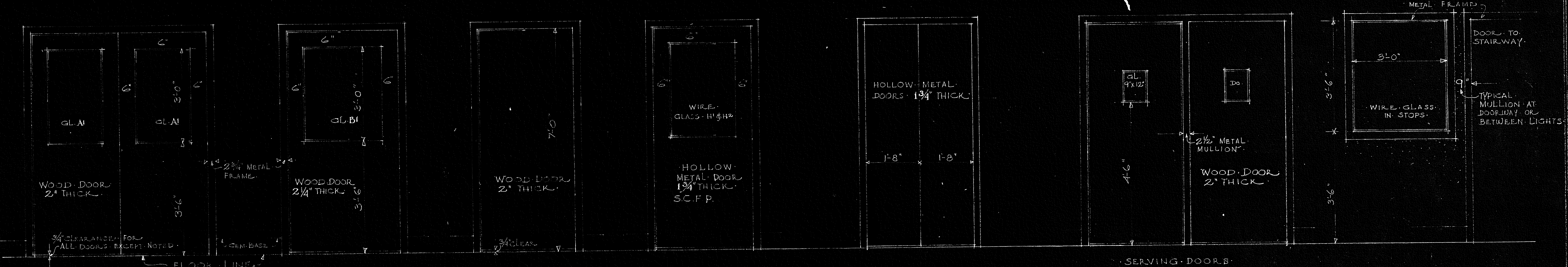
[Pattern]	BRICK
[Pattern]	TERRA COTTA
[Pattern]	CONCRETE
[Pattern]	FLOOR FILL
[Pattern]	WOOD
[Pattern]	STONE (OR GRANITE)

THE SEASIDE HOSPITAL  
 WATERFORD CONN.  
 TITLE  
 EXTERIOR DETAILS 101  
 SCALE  
 1/2" = 1'-0"  
 CASS GILBERT, INC. - ARCHITECT  
 244 MADISON AVE. NEW YORK, N. Y.

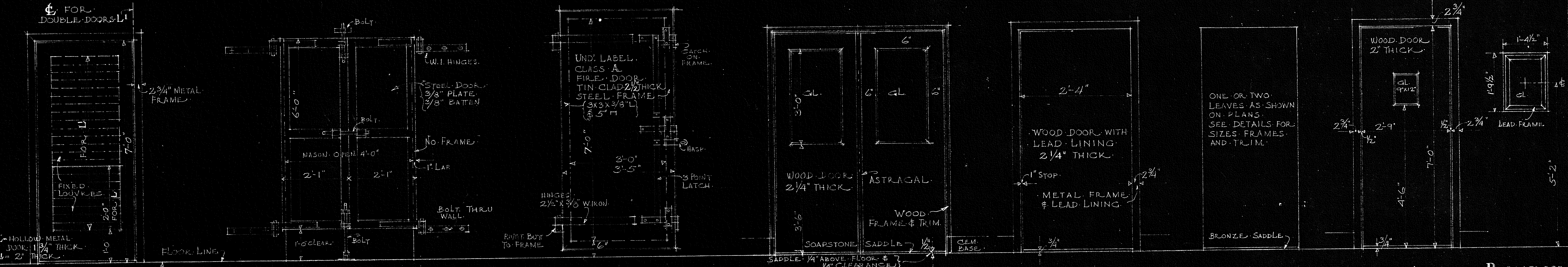




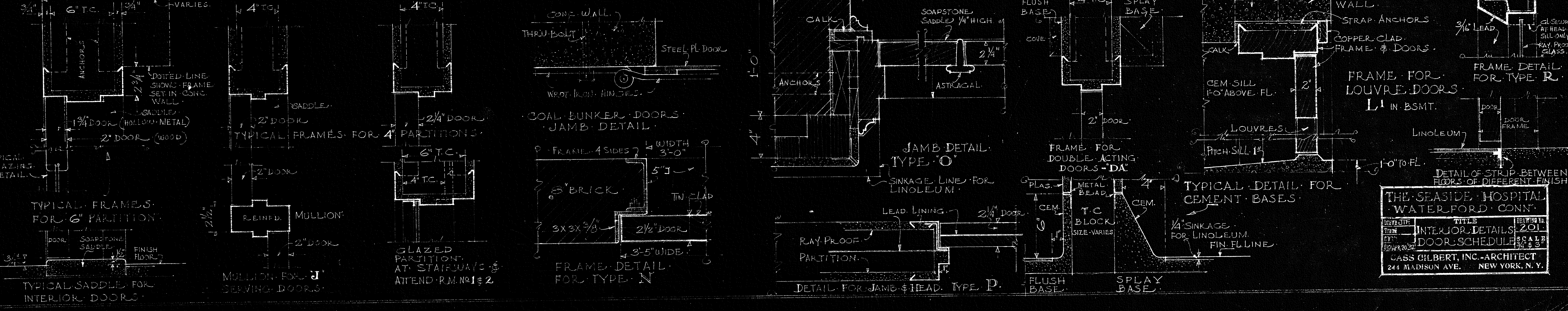




- A 2'-8" x 7'-0" SOLID
  - AI 2'-8" x 7'-0" GLAZED
  - B 3'-8" x 7'-0" SOLID
  - BI 3'-8" x 7'-0" GLAZED
  - C 3'-2" x 7'-0" SOLID
  - D 3'-0" x 7'-0" DO
  - E 2'-9" x 7'-0" DO
  - F 2'-2" x 7'-0" DO
  - G 2'-4" x 7'-0" DO
  - H 3'-1" x 7'-0" SOLID
  - HI 3'-1" x 7'-0" GLAZED SELF-CLOSING FIRE-PROOF UNDERWRITERS LABEL
  - I 1'-8" x 7'-0" SOLID S.C.F.P. UNDER LABEL
  - J 3'-0" x 7'-0" GLAZED
  - K GLAZED PARTITIONS AT STAIRWAYS 6" T.C. PARTITION
  - KI GL. PART. IN ATTEND. RMS. & NURSE RMS. 3'-0" WIDE 4" T.C. PARTITION
- NOTE: TYPICAL METAL FRAME SHOWN HERE. SEE OTHER DETAILS FOR FRAMES & TRIM AT EXTERIOR DOORS.



- L 3'-0" x 7'-0" METAL DOOR & FRAME
- LI 3'-0" x 7'-0" COPPER CLAD DOOR & FRAME SILL 1'-0" ABOVE FL.
- M 2'-1" x 6'-0" STEEL
- N 3'-0" x 7'-0" NET OPENING
- O 2'-8" x 7'-0" x 2 1/4" GLAZED
- P 2'-4" x 7'-0" x 2 1/4" SOLID
- S SPECIAL DOORS SEE LATER DETAILS
- DA 2'-9" x 7'-0" GLAZED



THE SEASIDE HOSPITAL WATERFORD CONN.

INTERIOR DETAILS 201

DOOR SCHEDULE 3/4 & 3"

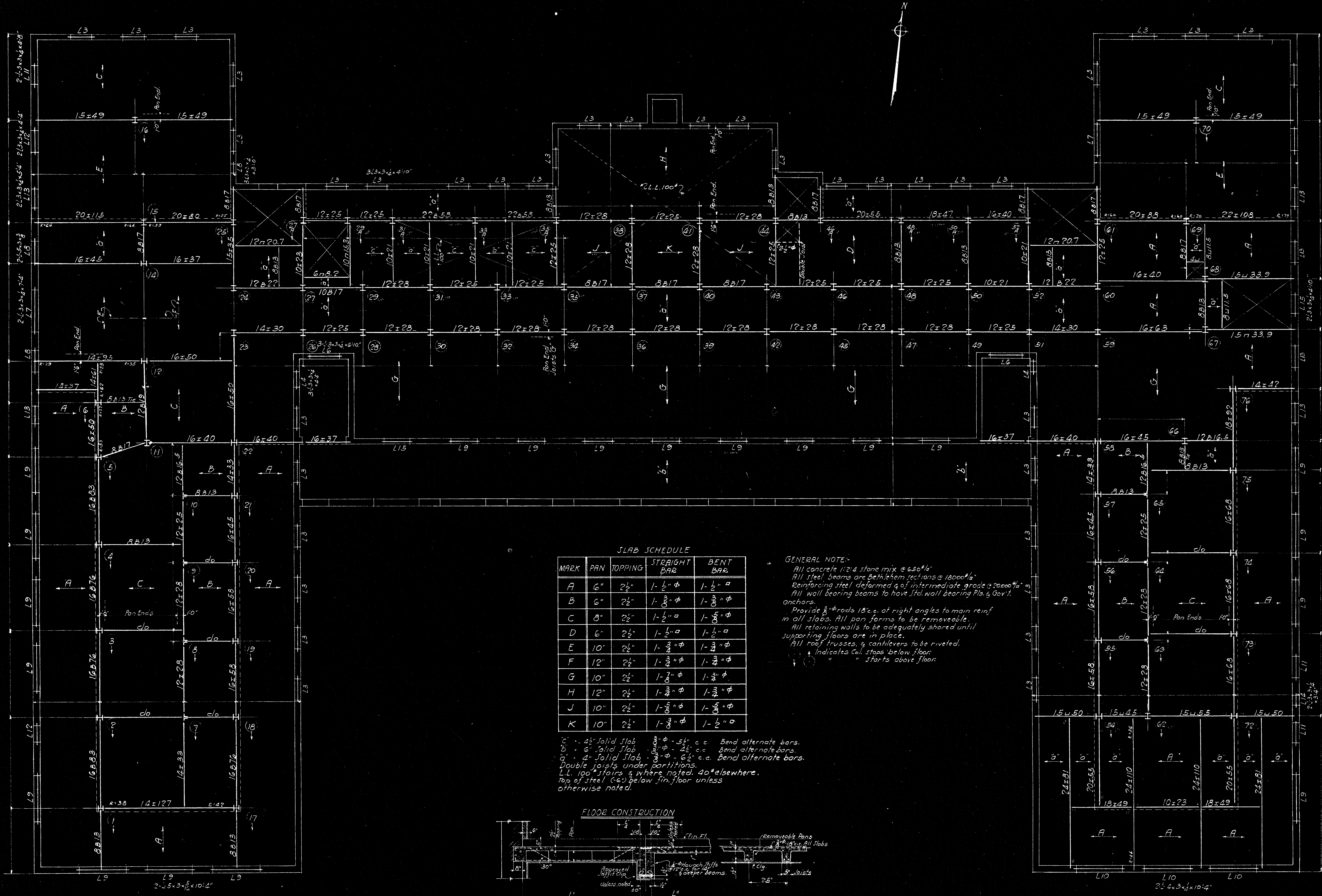
CASS GILBERT, INC. ARCHITECT

244 MADISON AVE. NEW YORK, N. Y.







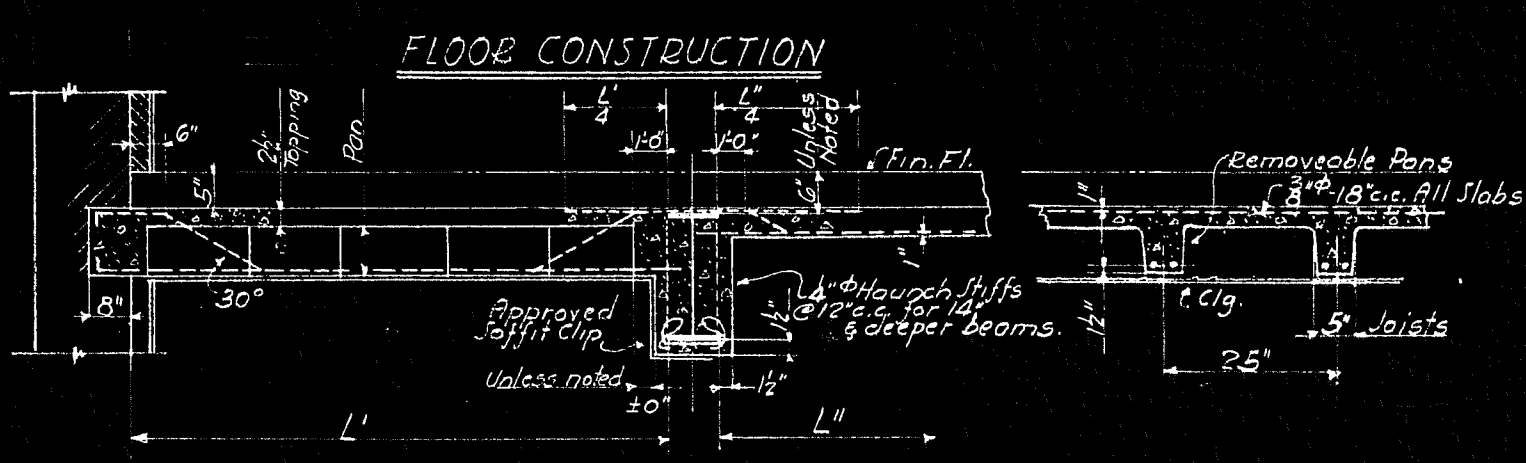


**SLAB SCHEDULE**

MARK	PAN	TOPPING	STRAIGHT BAR	BENT BAR
A	6"	2 1/2"	1-1/2" $\phi$	1-1/2" $\square$
B	6"	2 1/2"	1-3/8" $\phi$	1-3/8" $\phi$
C	8"	2 1/2"	1-1/2" $\square$	1-3/8" $\phi$
D	6"	2 1/2"	1-1/2" $\square$	1-1/2" $\square$
E	10"	2 1/2"	1-3/8" $\phi$	1-3/8" $\phi$
F	12"	2 1/2"	1-3/8" $\phi$	1-3/8" $\phi$
G	10"	2 1/2"	1-3/8" $\phi$	1-3/8" $\phi$
H	12"	2 1/2"	1-3/8" $\phi$	1-3/8" $\phi$
J	10"	2 1/2"	1-3/8" $\phi$	1-3/8" $\phi$
K	10"	2 1/2"	1-3/8" $\phi$	1-1/2" $\square$

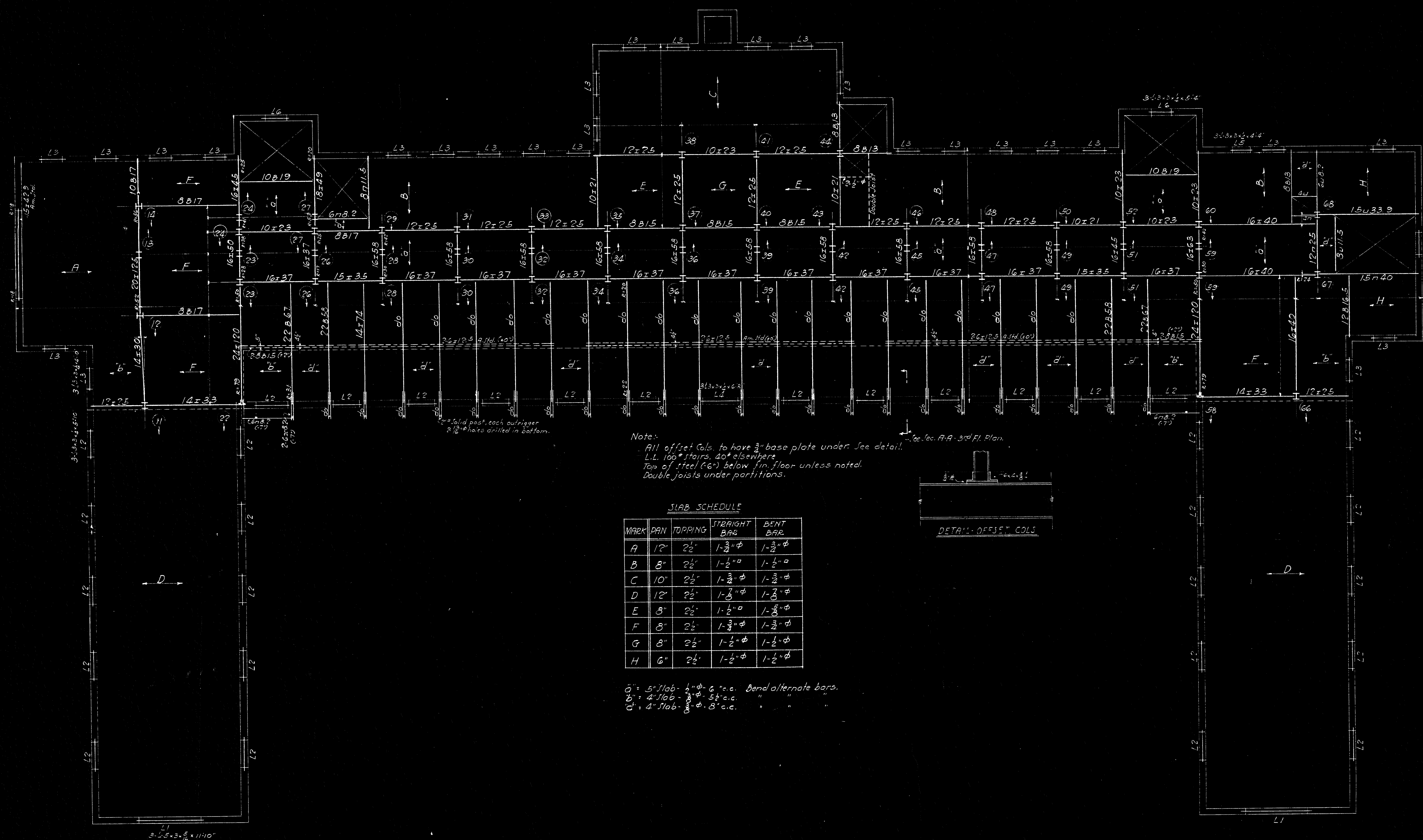
**GENERAL NOTE:**  
 All concrete 1:2:4 stone mix @ 6500'psi  
 All steel beams are Bethlehem sections @ 18000'psi  
 Reinforcing steel deformed @ of intermediate grade @ 20000'psi  
 All wall bearing beams to have steel wall bearing Pls. & Gov't. anchors.  
 Provide 3/8" rods 18" c.c. at right angles to main reinf. in all slabs. All pan forms to be removable.  
 All retaining walls to be adequately shored until supporting floors are in place.  
 All roof trusses & cantilevers to be riveted.  
 \* Indicates Col. tops below floor  
 " starts above floor

4" - 4" Solid Slab 3"  $\phi$  - 54" c.c. Bend alternate bars.  
 6" - 6" Solid Slab 3"  $\phi$  - 48" c.c. Bend alternate bars.  
 8" - 8" Solid Slab 3"  $\phi$  - 60" c.c. Bend alternate bars.  
 Double joists under partitions.  
 L.L. 100' stairs & where noted 40' elsewhere.  
 Top of steel Cas below fin. floor unless otherwise noted.



THE SEASIDE HOSPITAL WATERFORD CONN.	
AME	1002
AME	1st FLOOR FRAMING
4-2-32	8-1-0
CAMP BUSHNELL, INC. ARCHITECTS 244 MADISON AVE. NEW YORK, N. Y.	



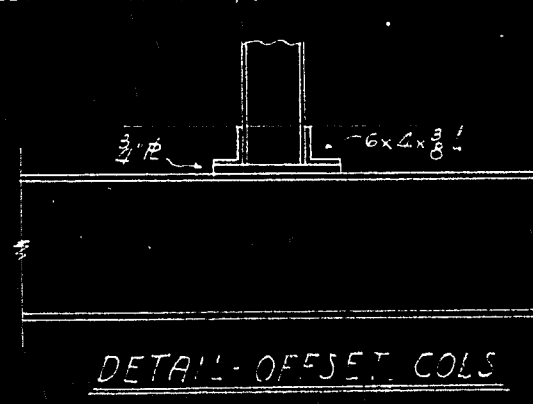


Note:  
 All offset cols. to have 3/4" base plate under. See detail.  
 L.L. 100' floors. 40' elsewhere.  
 Top of steel (6") below fin. floor unless noted.  
 Double joists under partitions.

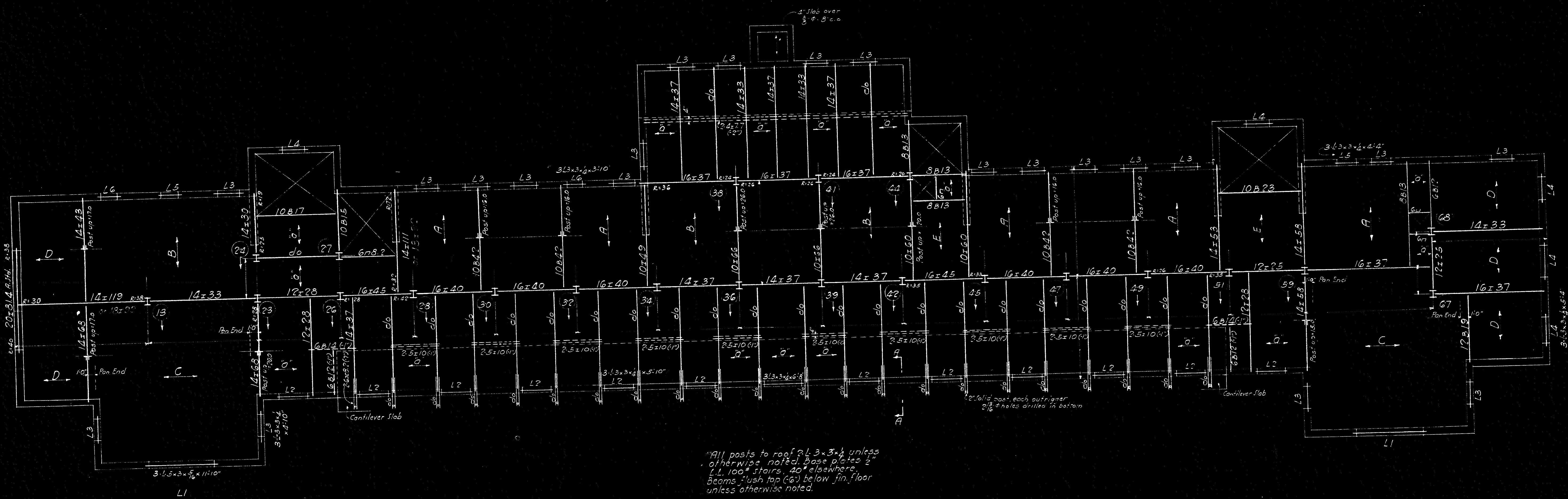
SLAB SCHEDULE

MARK	PAN	TOPPING	STRAIGHT BAR	BENT BAR
A	12"	2 1/2"	1-3/8" φ	1-3/8" φ
B	8"	2 1/2"	1-1/2" φ	1-1/2" φ
C	10"	2 1/2"	1-3/8" φ	1-3/8" φ
D	12"	2 1/2"	1-3/8" φ	1-3/8" φ
E	8"	2 1/2"	1-1/2" φ	1-3/8" φ
F	8"	2 1/2"	1-3/8" φ	1-3/8" φ
G	8"	2 1/2"	1-1/2" φ	1-1/2" φ
H	6"	2 1/2"	1-2" φ	1-2" φ

0" = 5' slab. 1" φ. 6" o.c. Bend alternate bars.  
 2" = 4' slab. 3/4" φ. 8" o.c.  
 4" = 4' slab. 3/4" φ. 8" o.c.





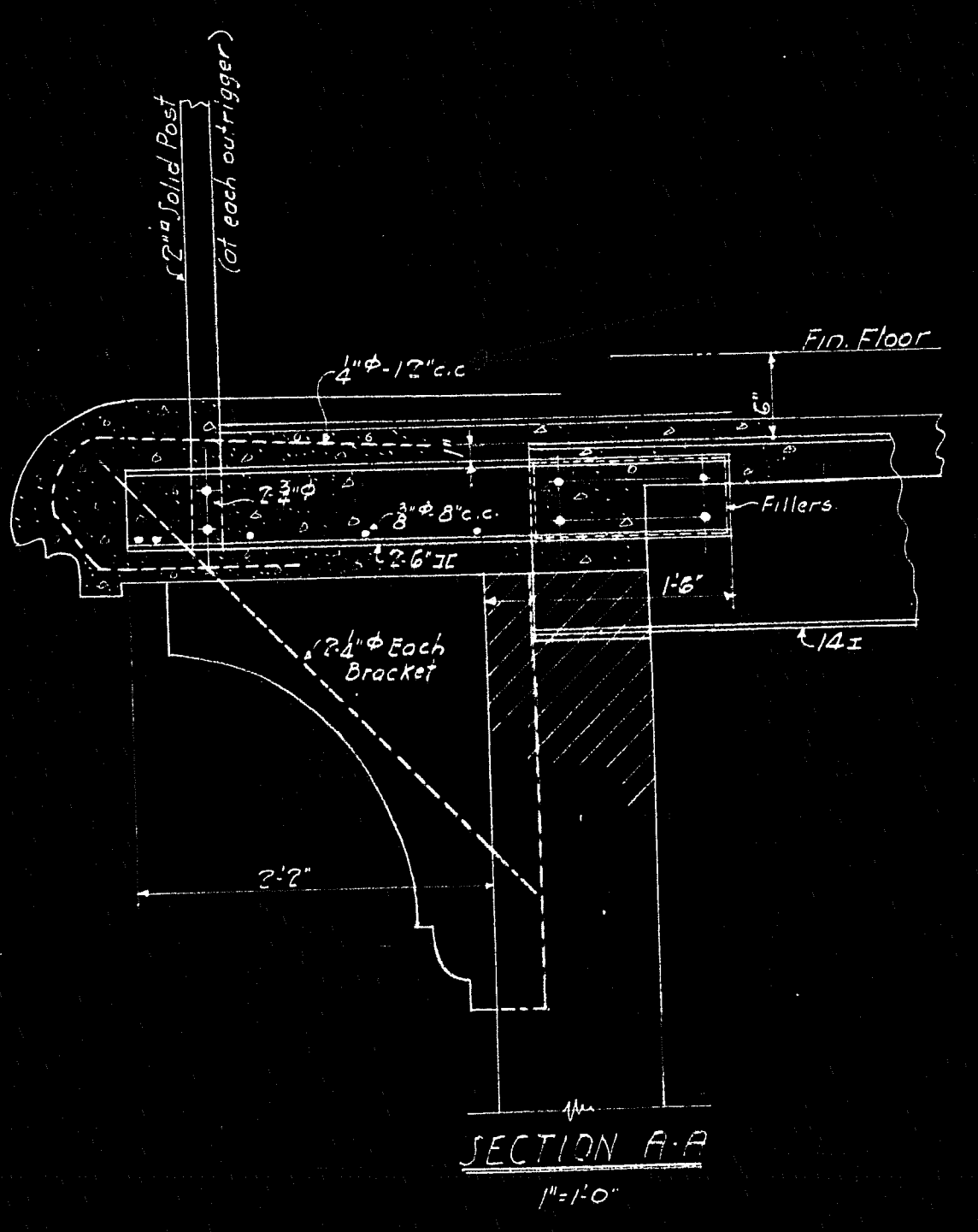


All posts to rest on L3 x 3 x 4 unless otherwise noted. Base of posts 2' x 4' cast in place. 2" below finish floor unless otherwise noted.

SLAB SCHEDULE

MARK	PAN	TOPPING	STRAIGHT BAR	BENT BAR
A	10"	2 1/2"	1-3/8" φ	1-1/2" φ
B	10"	2 1/2"	1-3/8" φ	1-5/8" φ
C	12"	2 1/2"	1-1" φ	1-1" φ
D	6"	2 1/2"	1-1/2" φ	1-1/2" φ
E	8"	2 1/2"	1-1/2" φ	1-1/2" φ

Slab 6" conc. 3" φ. 8" c.c. Bend alternate bars. Double joists under partitions.



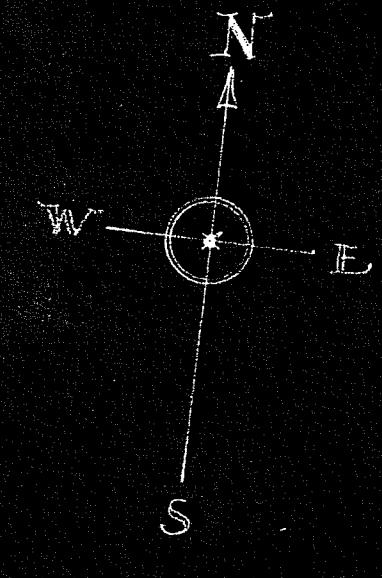
THE SEASIDE HOSPITAL  
WATERFORD  
CONN.

AME	1004
AME	3RD FLOOR FRAMING
AME	4-10-30

AND GILBERT, INCORPORATED  
100 WEST 42ND STREET  
NEW YORK, N.Y.

FIG. ESTIMATE ONLY  
4-10-30





STAIR NO 1

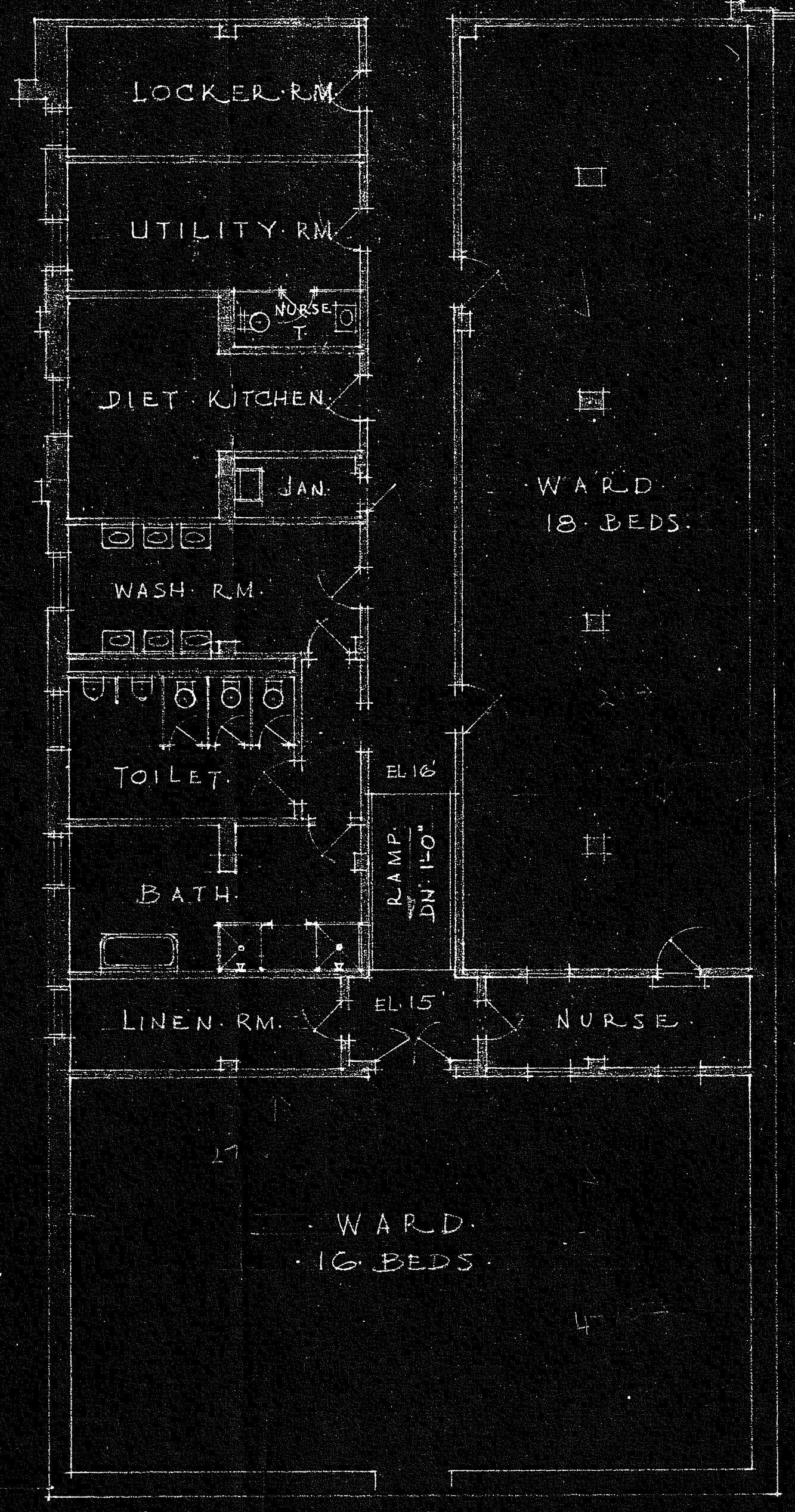
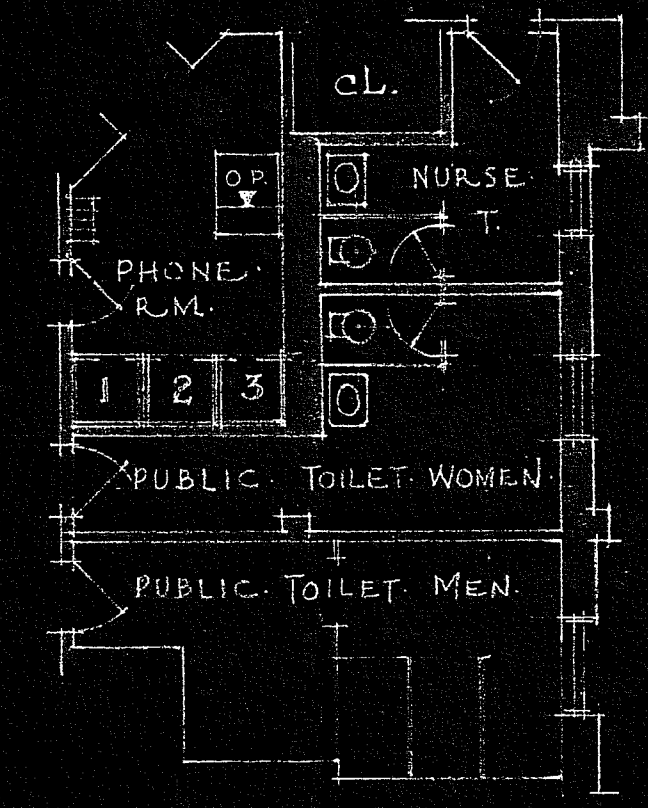
STAIR NO 2

KITCHEN STORE

STEWARD

LAUNDRY

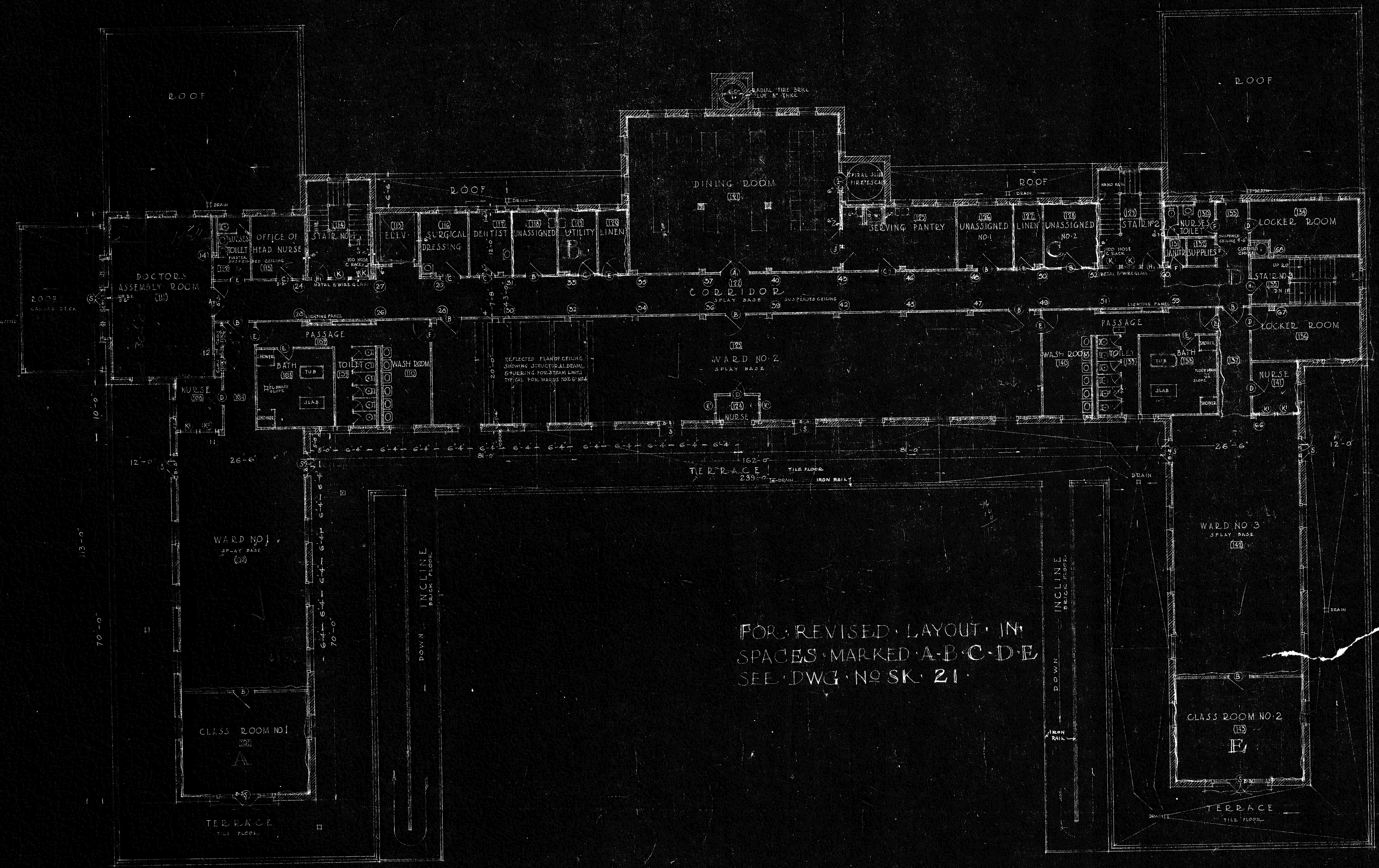
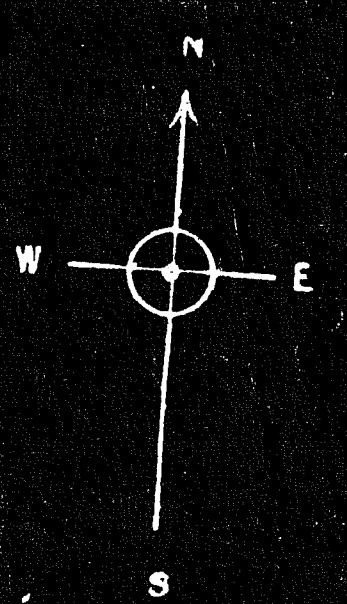
MALE HELP



GROUND FLOOR  
1/8" SCALE

THE SEASIDE HOSPITAL  
WATERFORD, CONN.  
TITLE: GROUND FL.  
SCALE: 1/8" = 1'-0"  
CASS GILBERT, INC., ARCHITECT  
204 MADISON AVE., NEW YORK, N. Y.

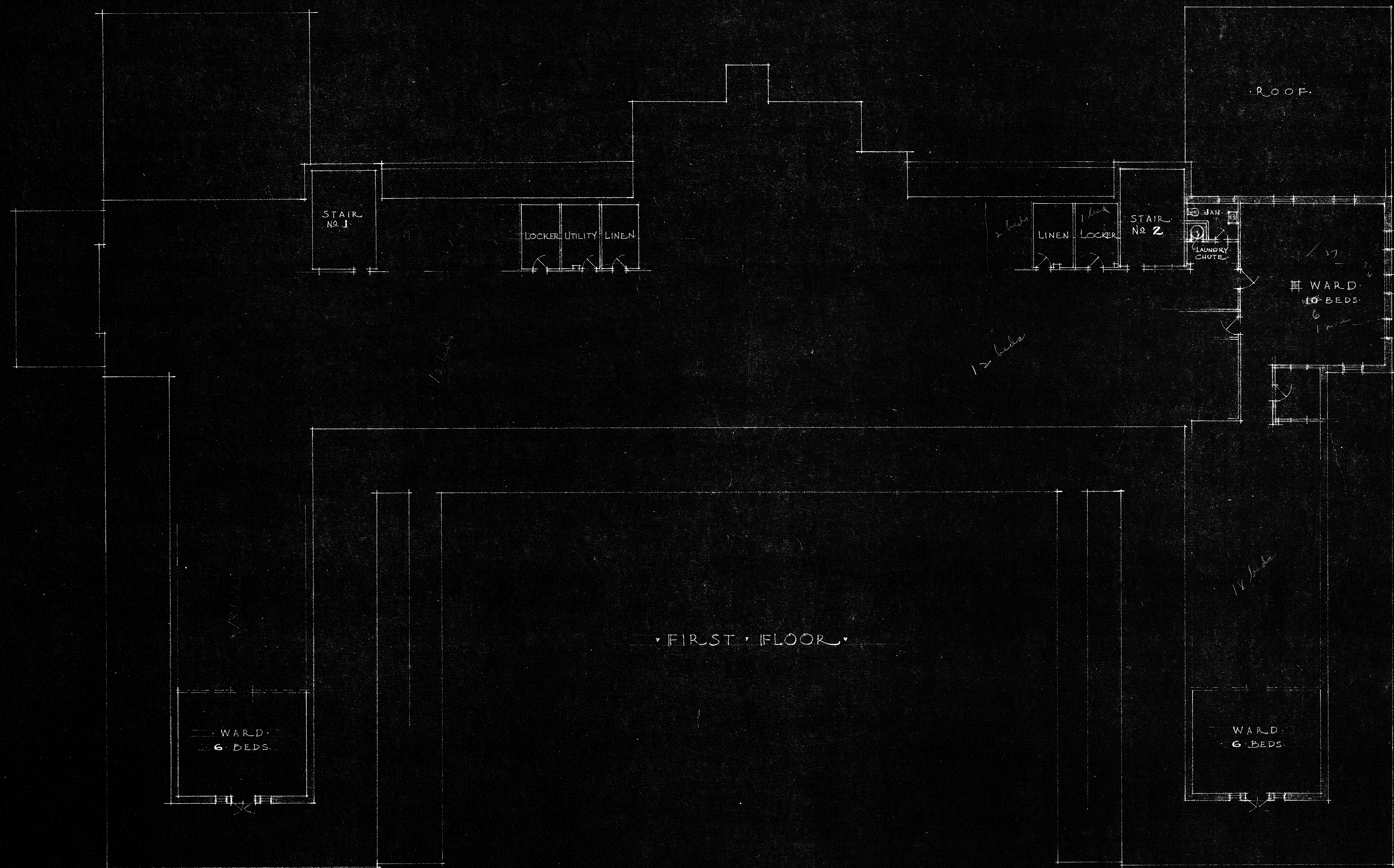
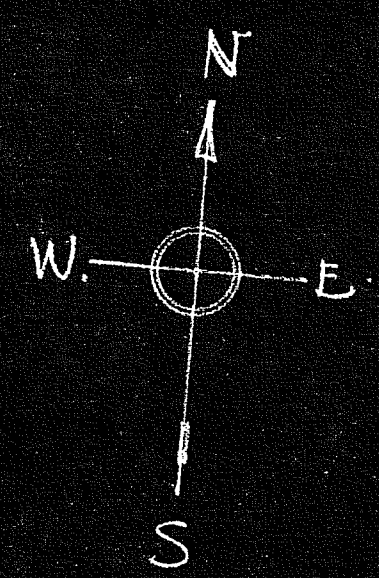




FOR REVISED LAYOUT IN SPACES MARKED A-B-C-D-E SEE DWG. NO. SK. 21

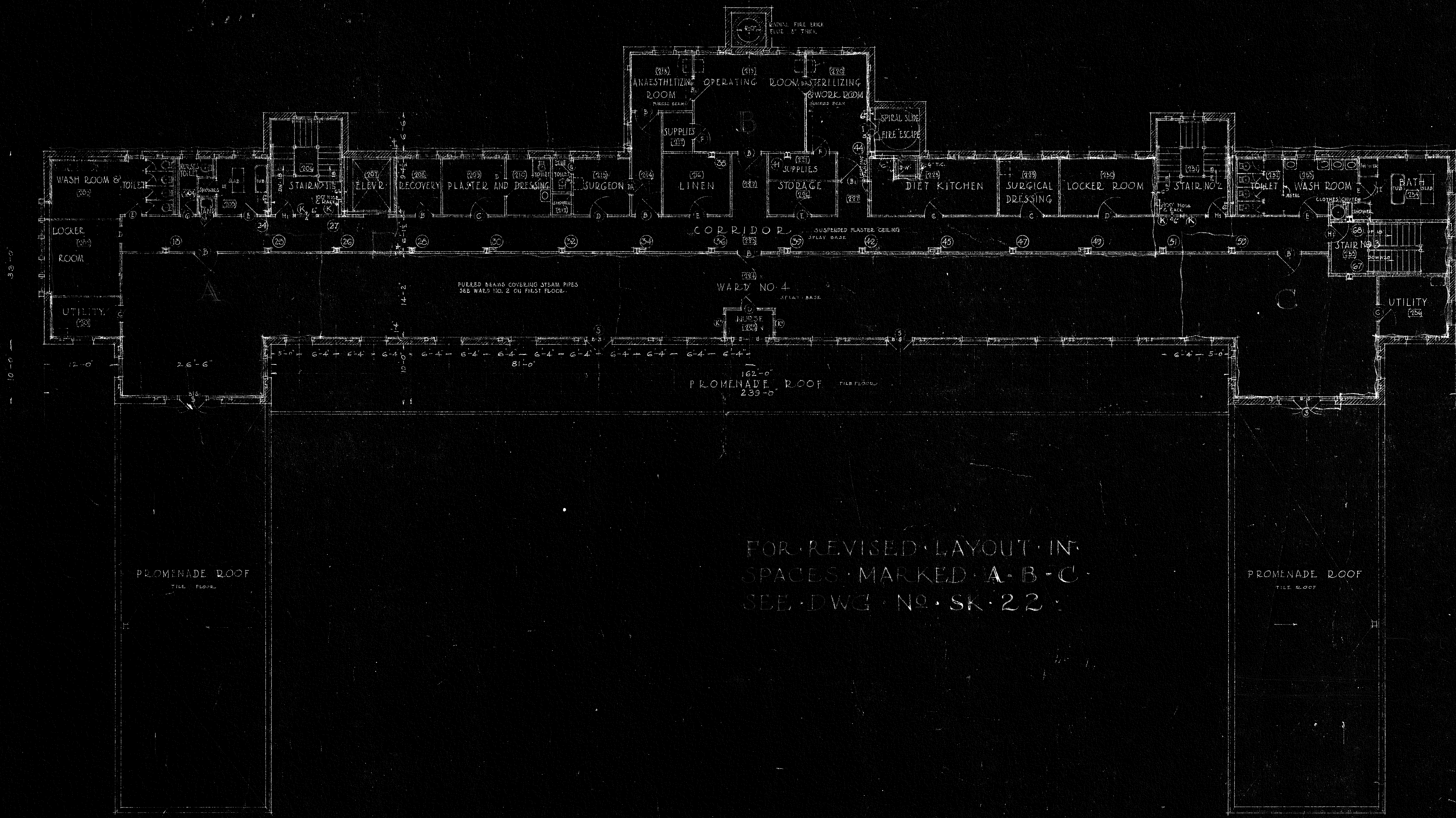
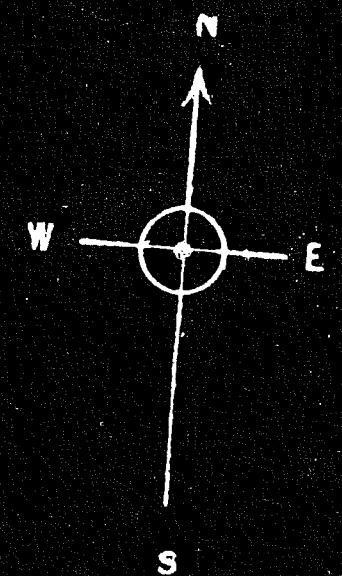
THE SEASIDE HOSPITAL		WATERFORD	
CONY		CONY	
Drawn	Checked	Scale	Drawn No.
CVT	CVT	1/8" = 1'-0"	2
CASS GILBERT, INC. - ARCHITECT		244 MADISON AVE. NEW YORK, N. Y.	





THE SEASIDE HOSPITAL  
WATERFORD, CONN.  
TITLE: FIRST FLOOR  
DRAWING NO. SK 21  
SCALE: 1/8" = 1'-0"  
CASS GILBERT, INC. - ARCHITECT  
244 MADISON AVE. NEW YORK, N. Y.

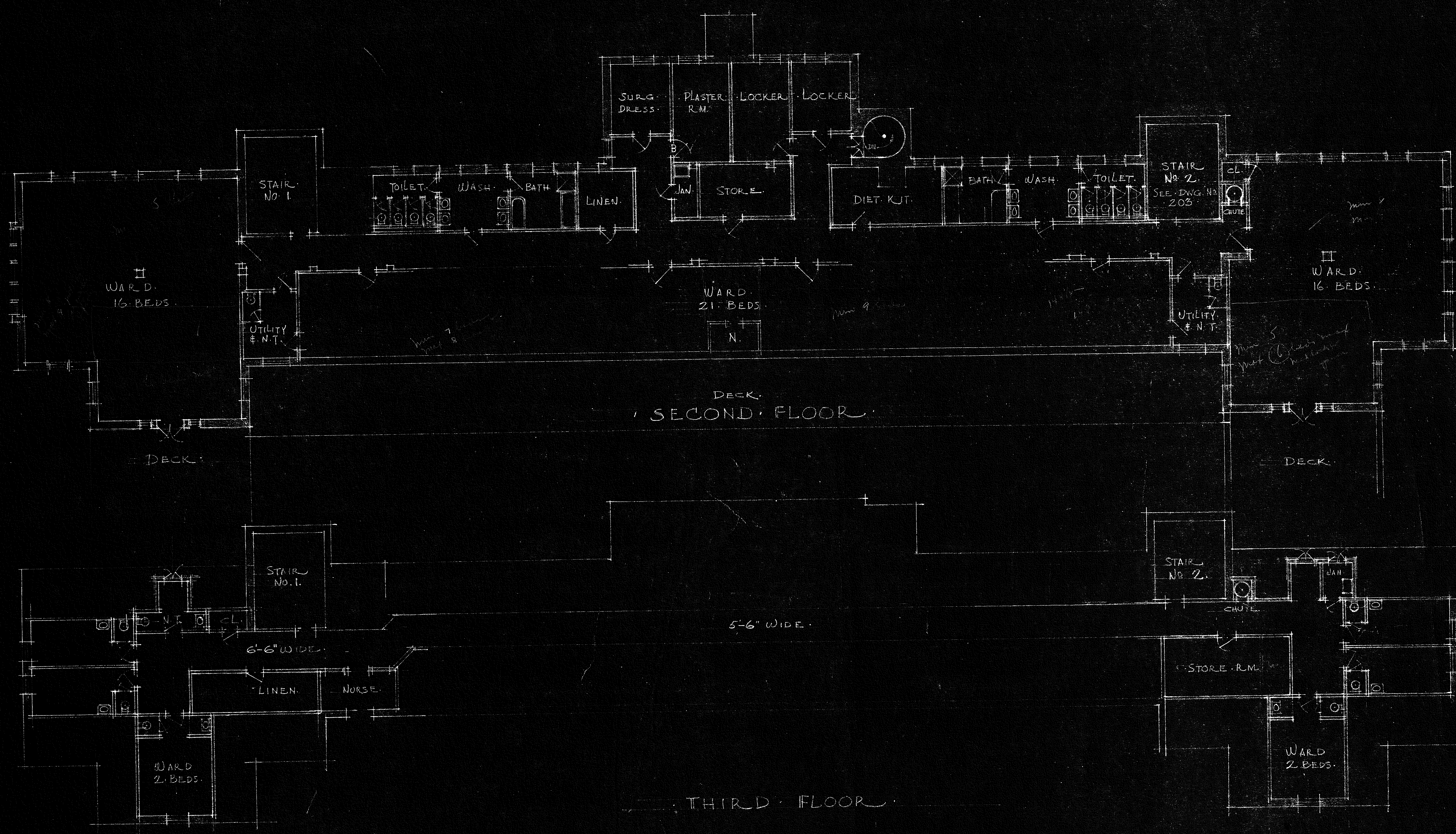
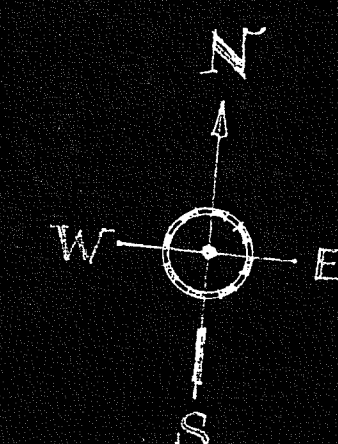




NOTE: SEE SPECIFICATIONS FOR SCHEDULE OF MATERIAL FINISHES.

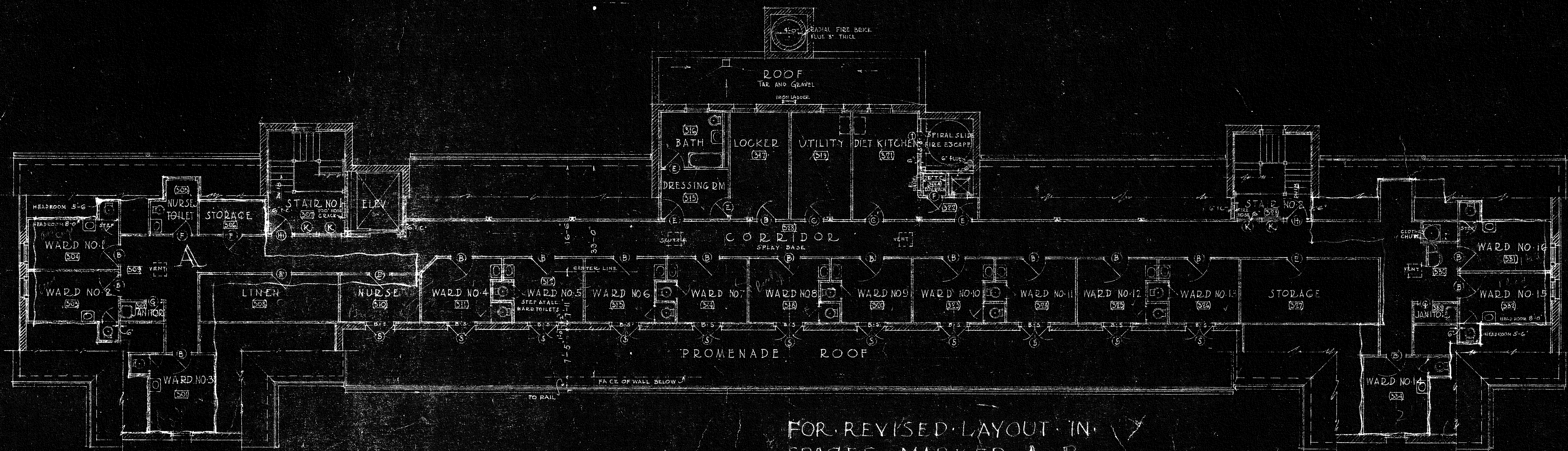
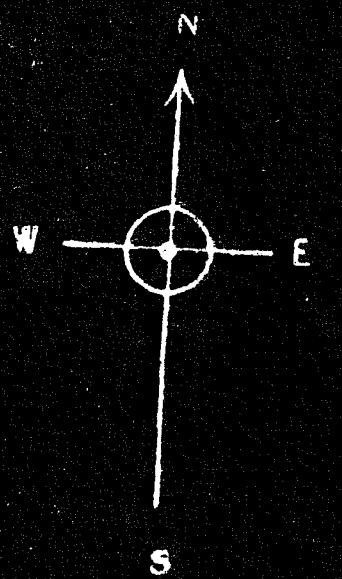
THE SEASIDE HOSPITAL		
WATERFORD CONN.		
DATE	TITLE	DRAWING NO.
1927	SECOND FLOOR	3
CITY	PLAN	SCALE
1/8" = 1'-0"		
CASS GILBERT, INC. - ARCHITECTS		
244 MADISON AVE. NEW YORK, N.Y.		



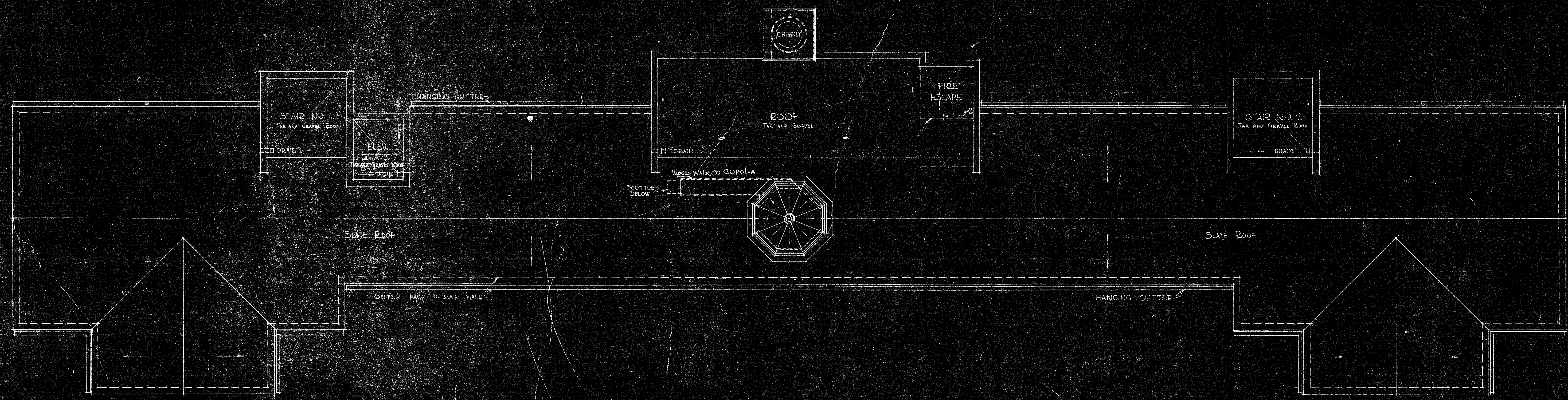


THE SEASIDE HOSPITAL  
WATERFORD, CONN.  
DRAWN BY SK22  
CITY THIRD FLOOR SCALE 1/8" = 1'-0"  
CABS OILBERT, INC. - ARCHITECT  
244 MADISON AVE. NEW YORK, N. Y.





FOR REVISED LAYOUT IN SPACES MARKED A-B SEE DWG. NO. SK. 22



THE SEASIDE HOSPITAL WATERFORD CONN.			
DATE	TITLE	DRAWING NO.	
MAR 22 1922	THIRD FLOOR & ROOF PLANS	4	
FILE	SCALE	1/8" = 1'-0"	
CASS GILBERT, INC. ARCHITECT 100 N. 5TH ST. NEW YORK, N.Y.			



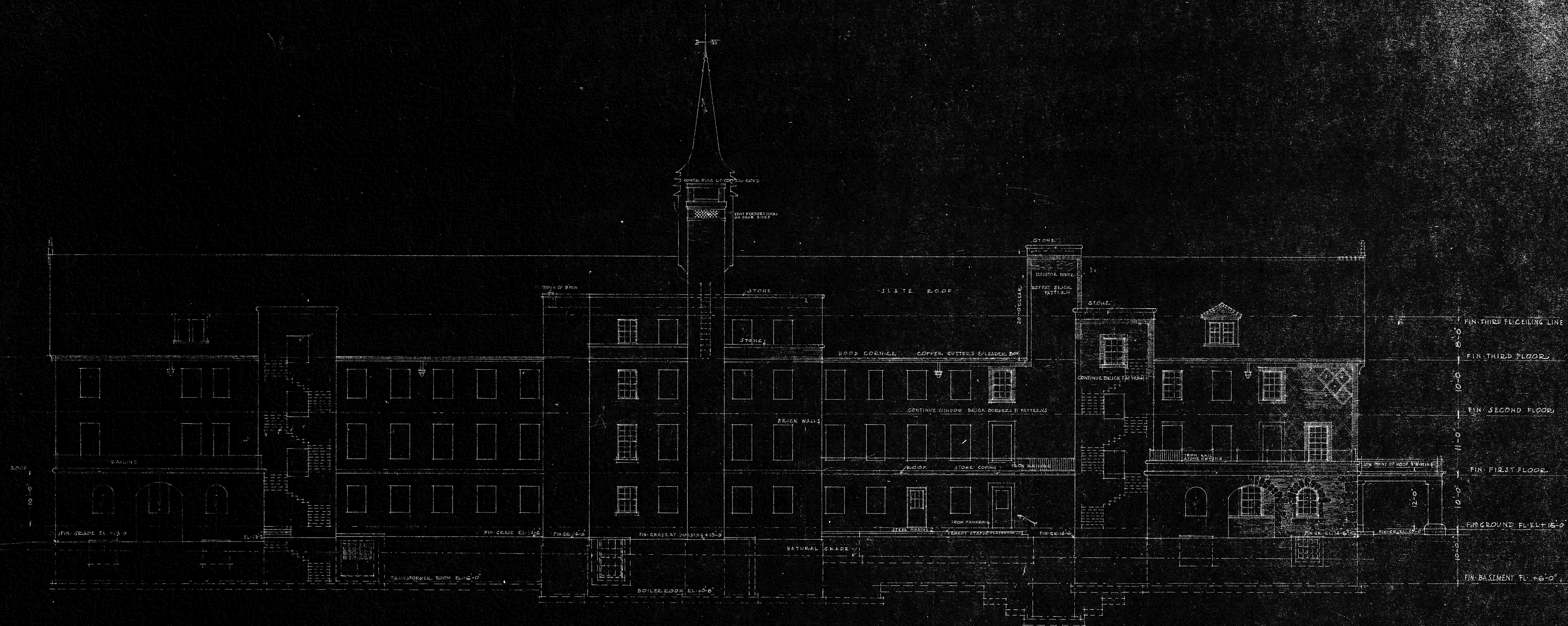


THE SEASIDE HOSPITAL		CONN.	
DATE	TITLE	DRAWING NO.	SCALE
1911	SOUTH ELEVATION	51	1/8" = 1'-0"
CASS GILBERT, INC. - ARCHITECT			
244 MADISON AVE. NEW YORK, N. Y.			









SEASIDE HOSPITAL WATERFORD CONN.		TITLE	
DATE	1912	TITLE	NORTH ELEVATION
CITY	WATERFORD	SCALE	1/8" = 1'-0"
ARCHT.	CASS GILBERT, INC.	ARCHITECT	
24 W. LAMSON AVE. NEW YORK, N. Y.			

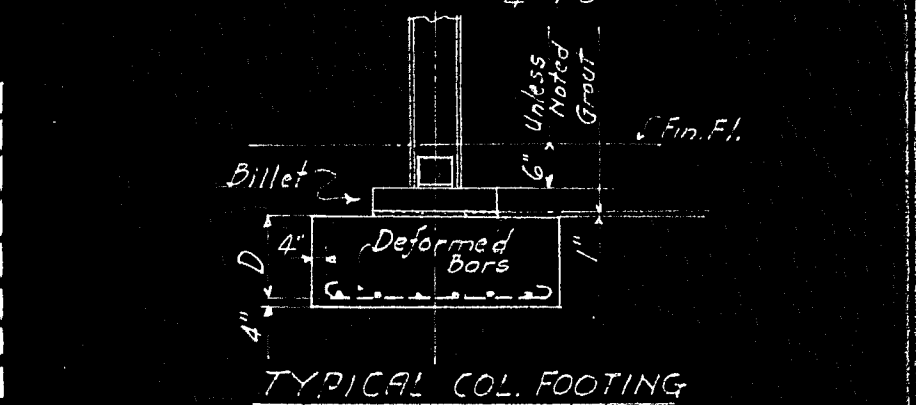
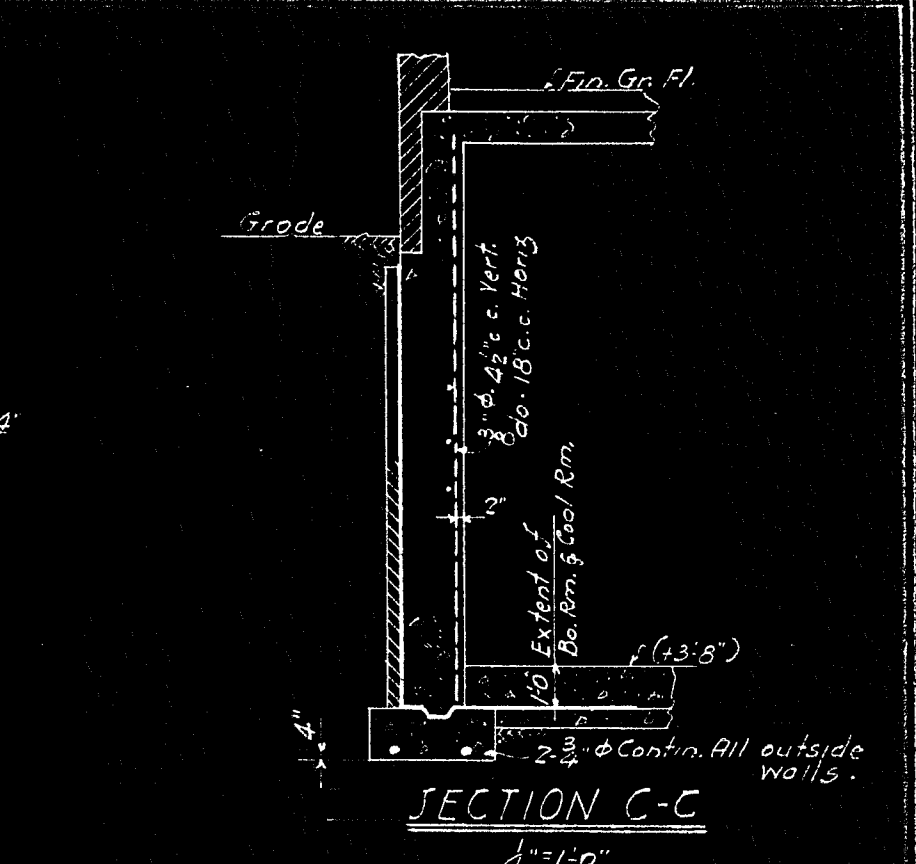
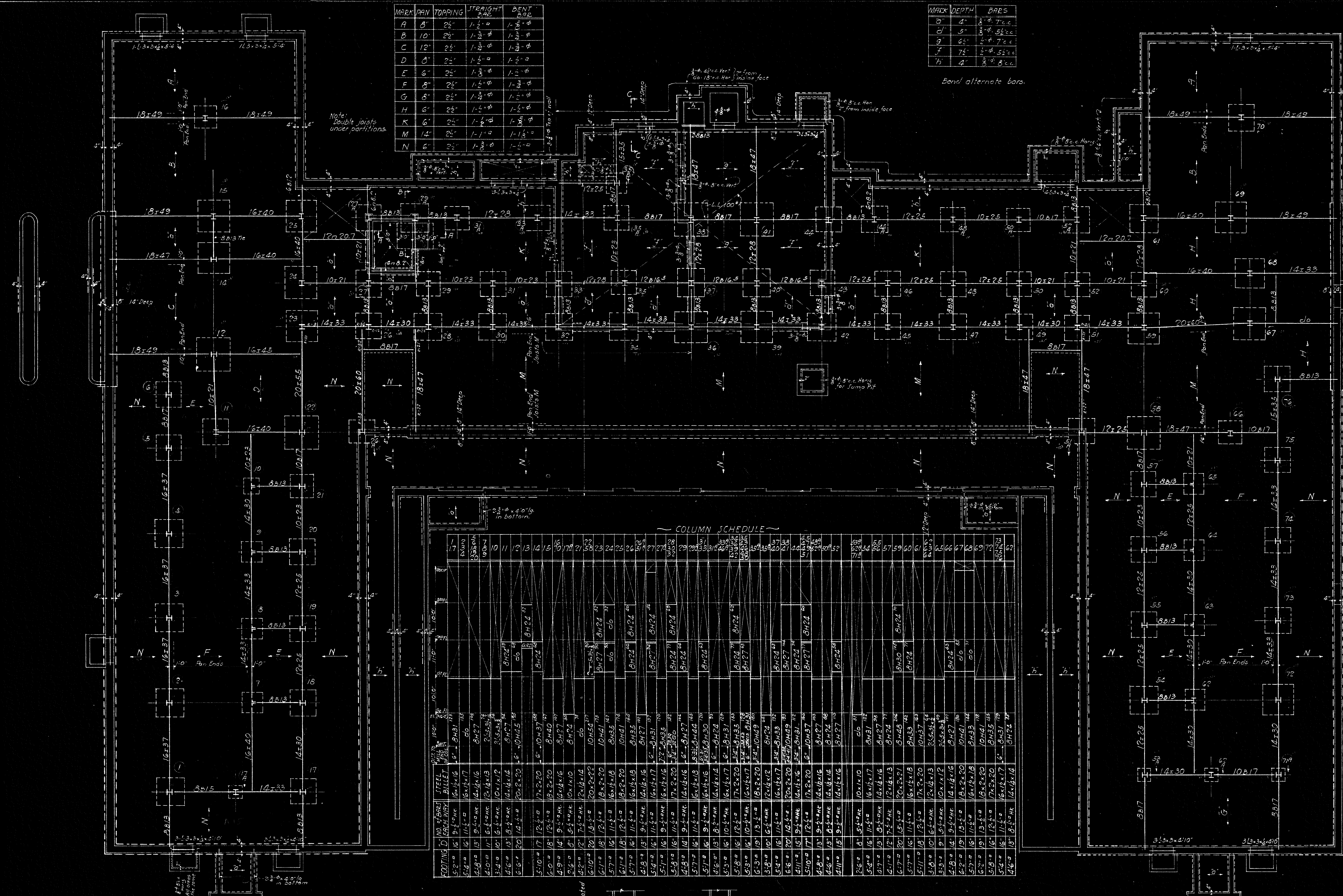




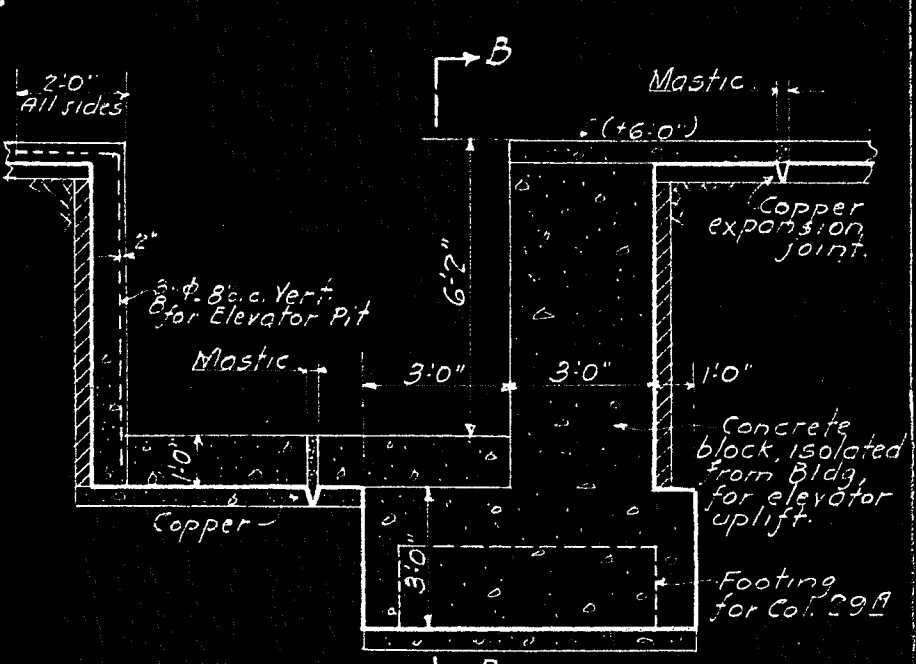


MARK	SPAN	TOPPING	STRAIGHT BAR	BENT BAR
A	8'	2 1/2"	1-3/4"	1-3/4"
B	10'	2 1/2"	1-3/4"	1-3/4"
C	12'	2 1/2"	1-3/4"	1-3/4"
D	8'	2 1/2"	1-3/4"	1-3/4"
E	8'	2 1/2"	1-3/4"	1-3/4"
F	8'	2 1/2"	1-3/4"	1-3/4"
G	8'	2 1/2"	1-3/4"	1-3/4"
H	6'	2 1/2"	1-3/4"	1-3/4"
K	6'	2 1/2"	1-3/4"	1-3/4"
M	12'	2 1/2"	1-3/4"	1-3/4"
N	6'	2 1/2"	1-3/4"	1-3/4"

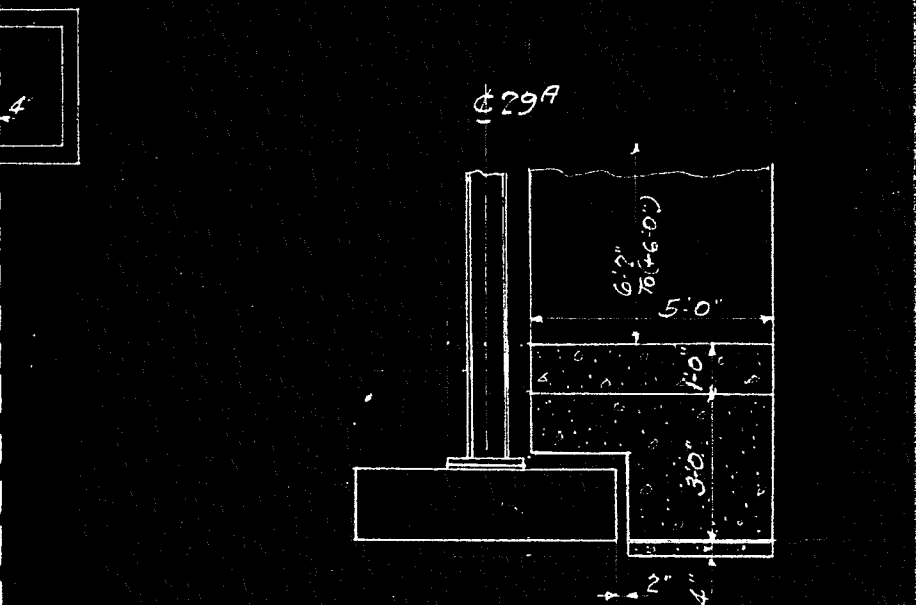
MARK	DEPTH	BAR
1	4"	3 # 7 c.c.
2	5"	3 # 7 c.c.
3	6"	3 # 7 c.c.
4	7"	3 # 7 c.c.
5	4"	3 # 8 c.c.



**FOUNDATION NOTES:-**  
 1. 12" Deep Footings for soil capacity of 5000 lbs. concrete 1:2:4 stone mix.  
 2. Reinforcing rods to be deformed of intermediate grade.  
 3. See architect's plans for waterproofing.  
 4. All wall footings to be 6" wider than wall above & 12" deep, unless noted.  
 5. Stapping of footings to be done in ratio of 2:10:10.  
 6. Pipes under G.C. where necessary to be 4" larger all around, than sillet & not higher than 8 times least dimension.



**SECTION A-A 4" x 10"**  
 This block to be isolated from Bldg. on all sides by a 2" mastic joint.

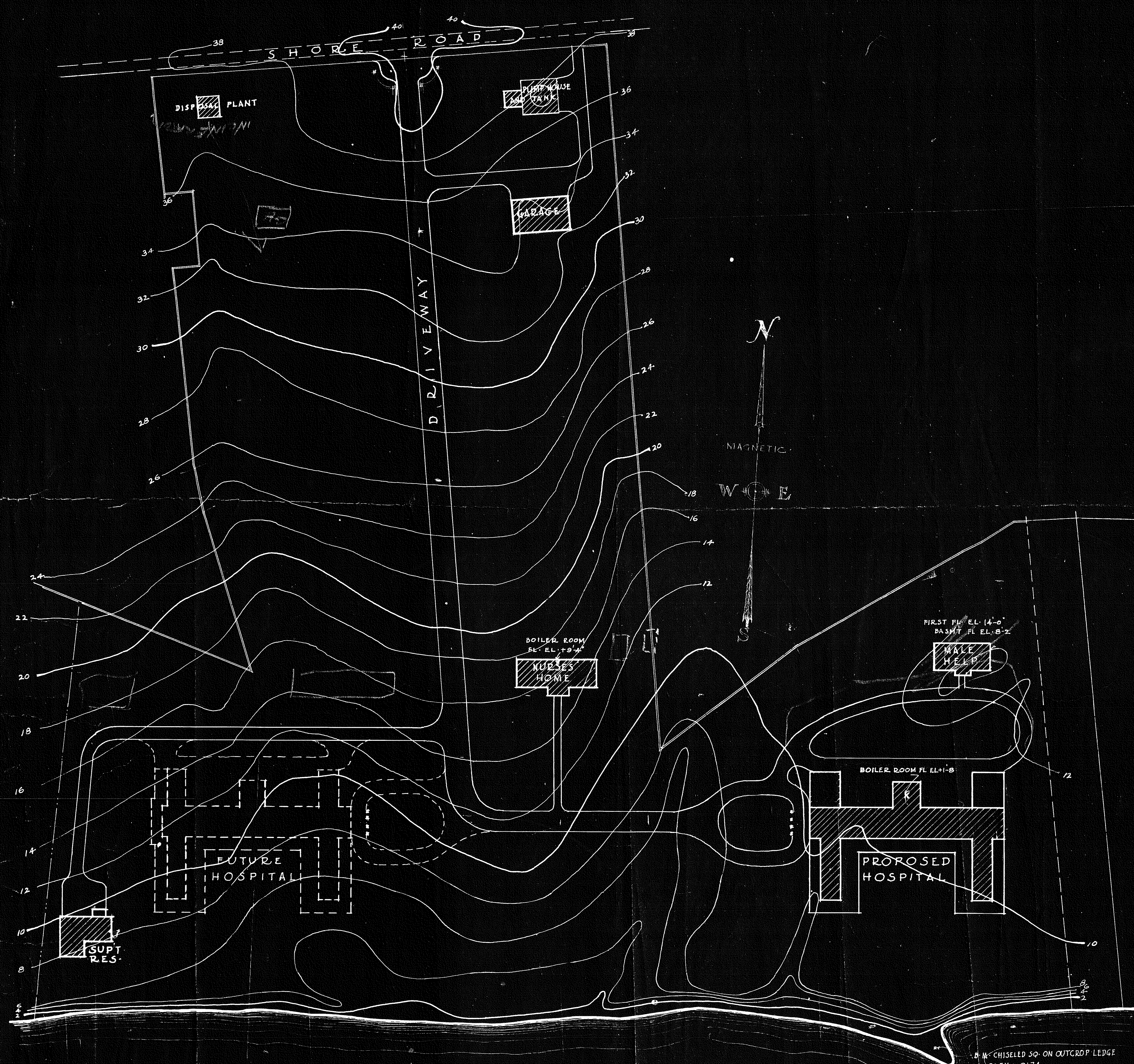


**SECTION B-B 4" x 10"**

**COLUMN SCHEDULE**

NO.	MARK	SECTION	NO.	MARK	SECTION	NO.	MARK	SECTION	NO.	MARK	SECTION
1	17	10x10	31	33	10x10	61	63	10x10	91	93	10x10
2	18	10x10	32	34	10x10	62	64	10x10	92	94	10x10
3	19	10x10	33	35	10x10	63	65	10x10	93	95	10x10
4	20	10x10	34	36	10x10	64	66	10x10	94	96	10x10
5	21	10x10	35	37	10x10	65	67	10x10	95	97	10x10
6	22	10x10	36	38	10x10	66	68	10x10	96	98	10x10
7	23	10x10	37	39	10x10	67	69	10x10	97	99	10x10
8	24	10x10	38	40	10x10	68	70	10x10	98	100	10x10
9	25	10x10	39	41	10x10	69	71	10x10	99	101	10x10
10	26	10x10	40	42	10x10	70	72	10x10	100	102	10x10
11	27	10x10	41	43	10x10	71	73	10x10	101	103	10x10
12	28	10x10	42	44	10x10	72	74	10x10	102	104	10x10
13	29	10x10	43	45	10x10	73	75	10x10	103	105	10x10
14	30	10x10	44	46	10x10	74	76	10x10	104	106	10x10
15	31	10x10	45	47	10x10	75	77	10x10	105	107	10x10
16	32	10x10	46	48	10x10	76	78	10x10	106	108	10x10
17	33	10x10	47	49	10x10	77	79	10x10	107	109	10x10
18	34	10x10	48	50	10x10	78	80	10x10	108	110	10x10
19	35	10x10	49	51	10x10	79	81	10x10	109	111	10x10
20	36	10x10	50	52	10x10	80	82	10x10	110	112	10x10
21	37	10x10	51	53	10x10	81	83	10x10	111	113	10x10
22	38	10x10	52	54	10x10	82	84	10x10	112	114	10x10
23	39	10x10	53	55	10x10	83	85	10x10	113	115	10x10
24	40	10x10	54	56	10x10	84	86	10x10	114	116	10x10
25	41	10x10	55	57	10x10	85	87	10x10	115	117	10x10
26	42	10x10	56	58	10x10	86	88	10x10	116	118	10x10
27	43	10x10	57	59	10x10	87	89	10x10	117	119	10x10
28	44	10x10	58	60	10x10	88	90	10x10	118	120	10x10
29	45	10x10	59	61	10x10	89	91	10x10	119	121	10x10
30	46	10x10	60	62	10x10	90	92	10x10	120	122	10x10
31	47	10x10	61	63	10x10	91	93	10x10	121	123	10x10
32	48	10x10	62	64	10x10	92	94	10x10	122	124	10x10
33	49	10x10	63	65	10x10	93	95	10x10	123	125	10x10
34	50	10x10	64	66	10x10	94	96	10x10	124	126	10x10
35	51	10x10	65	67	10x10	95	97	10x10	125	127	10x10
36	52	10x10	66	68	10x10	96	98	10x10	126	128	10x10
37	53	10x10	67	69	10x10	97	99	10x10	127	129	10x10
38	54	10x10	68	70	10x10	98	100	10x10	128	130	10x10
39	55	10x10	69	71	10x10	99	101	10x10	129	131	10x10
40	56	10x10	70	72	10x10	100	102	10x10	130	132	10x10
41	57	10x10	71	73	10x10	101	103	10x10	131	133	10x10
42	58	10x10	72	74	10x10	102	104	10x10	132	134	10x10
43	59	10x10	73	75	10x10	103	105	10x10	133	135	10x10
44	60	10x10	74	76	10x10	104	106	10x10	134	136	10x10
45	61	10x10	75	77	10x10	105	107	10x10	135	137	10x10
46	62	10x10	76	78	10x10	106	108	10x10	136	138	10x10
47	63	10x10	77	79	10x10	107	109	10x10	137	139	10x10
48	64	10x10	78	80	10x10	108	110	10x10	138	140	10x10
49	65	10x10	79	81	10x10	109	111	10x10	139	141	10x10
50	66	10x10	80	82	10x10	110	112	10x10	140	142	10x10
51	67	10x10	81	83	10x10	111	113	10x10	141	143	10x10
52	68	10x10	82	84	10x10	112	114	10x10	142	144	10x10
53	69	10x10	83	85	10x10	113	115	10x10	143	145	10x10
54	70	10x10	84	86	10x10	114	116	10x10	144	146	10x10
55	71	10x10	85	87	10x10	115	117	10x10	145	147	10x10
56	72	10x10	86	88	10x10	116	118	10x10	146	148	10x10
57	73	10x10	87	89	10x10	117	119	10x10	147	149	10x10
58	74	10x10	88	90	10x10	118	120	10x10	148	150	10x10
59	75	10x10	89	91	10x10	119	121	10x10	149	151	10x10
60	76	10x10	90	92	10x10	120	122	10x10	150	152	10x10
61	77	10x10	91	93	10x10	121	123	10x10	151	153	10x10
62	78	10x10	92	94	10x10	122	124	10x10	152	154	10x10
63	79	10x10	93	95	10x10	123	125	10x10	153	155	10x10
64	80	10x10	94	96	10x10	124	126	10x10	154	156	10x10
65	81	10x10	95	97	10x10	125	127	10x10	155	157	10x10
66	82	10x10	96	98	10x10	126	128	10x10	156	158	10x10
67	83	10x10	97	99	10x10	127	129	10x10	157	159	10x10
68	84	10x10	98	100	10x10	128	130	10x10	158	160	10x10
69	85	10x10	99	101	10x10	129	131	10x10	159	161	10x10
70	86	10x10	100	102	10x10	130	132	10x10	160	162	10x10
71	87	10x10	101	103	10x10	131	133	10x10	161	163	10x10
72	88	10x10	102	104	10x10	132	134	10x10	162	164	10x10
73	89	10x10	103	105	10x10	133	135	10x10	163	165	10x10
74	90	10x10	104	106	10x10	134	136	10x10	164	166	10x10
75	91	10x10	105	107	10x10	135	137	10x10	165	167	10x10
76	92	10x10	106	108	10x10	136	138	10x10	166	168	10x10
77	93	10x10	107	109	10x10	137	139	10x10	167	169	10x10
78	94	10x10	108	110	10x10	138	140	10x10	168	170	10x10
79	95	10x10	109	111	10x10	139	141	10x10	169	171	10x10
80	96	10x10	110	112	10x10	140	142	10x10	170	172	10x10
81	97	10x10	111	113	10x10	141	143	10x10	171	173	10x10
82	98	10x10	112	114	10x10	142	144	10x10	172	174	10x10
83	99	10x10	113	115	10x10	143	145	10x10	173	175	10x10
84	100	10x10	114	116	10x10	144	146	10x10	174	176	10x10
85	101	10x10	115	117	10x10	145	147	10x10	175	177	10x10
86	102	10x10	116	118	10x10	146	148	10x10	176	178	10x10
87	103	10x10	117	119	10x10	147	149	10x10	177	179	10x10
88	104	10x10	118	120	10x10	148	150	10x10	178	180	10x10
89	105	10x10	119	121	10x10	149	151	10x10	179	181	10x10
90	106	10x10	120	122	10x10	150	152	10x10	180	182	10x10
91	107	10x10	121	123	10x10	151	153	10x10	181	183	10x10
92	108	10x10	122	124	10x10	152	154	10x10	182	184	10x10
93	109	10x10	123	125	10x10	153	155	10x10	183	185	10x10
94	110	10x10	124	126	10x10	154	156	10x10	184	186	10x10
95	111	10x10	125	127	10x10	155	157	10x10	185	187	10x10
96	112	10x10	126	128	10x10	156	158	10x10	186	188	10x10
97	113	10x10	127	129	10x10	157	159	10x10	187	189	10x10
98	114	10x10	128	130	10x10	158	160	10x10	188	190	10x10
99	115	10x10	129	131	10x10	159	161	10x10	189	191	10x10
100	116	10x10	130	132	10x10	160	162	10x10	190	192	10x10
101	117	10x10	131	133	10x10	161	163	10x10	191	193	10x10
102	118	10x10	132	134	10x10	162	164	10x10	192	194	10x10
103	119	10x1									





LONG ISLAND SOUND

THE SEASIDE HOSPITAL WATERFORD, CONN.		
Drawn ZNM	TITLE	DRAWING NO.
Traced	PLOT PLAN	02
Checked	SCALE	1" = 80'
DATE	CASS GILBERT, INC. - ARCHITECT	
REV. MAR-10-32	244 MADISON AVE. NEW YORK, N. Y.	