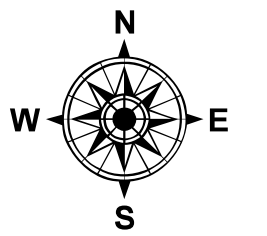


James L Goodwin & Natchaug State Forests

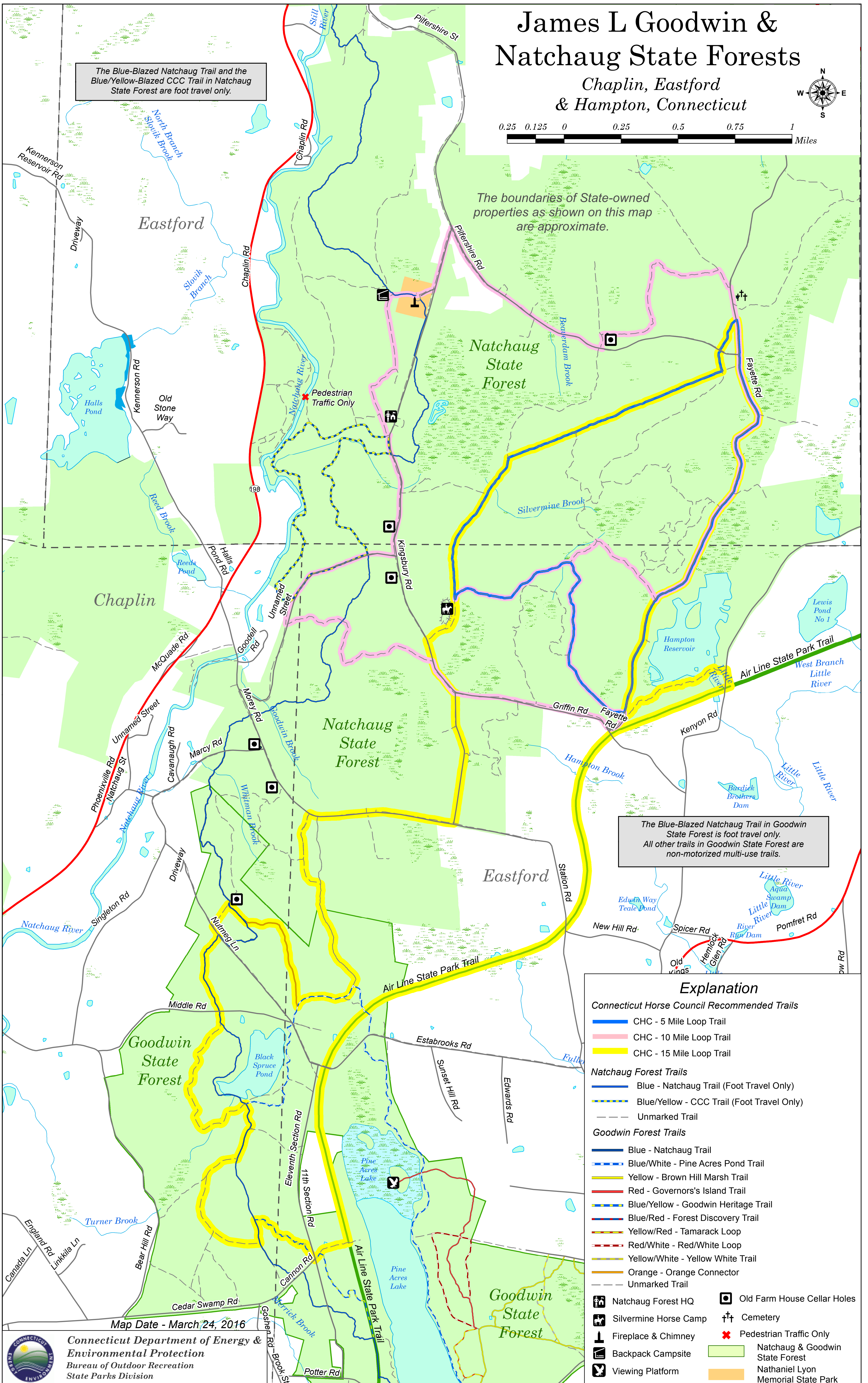
Chaplin, Eastford & Hampton, Connecticut



The Blue-Blazed Natchaug Trail and the Blue/Yellow-Blazed CCC Trail in Natchaug State Forest are foot travel only.

The boundaries of State-owned properties as shown on this map are approximate.

The Blue-Blazed Natchaug Trail in Goodwin State Forest is foot travel only. All other trails in Goodwin State Forest are non-motorized multi-use trails.



Explanation

Connecticut Horse Council Recommended Trails

- CHC - 5 Mile Loop Trail
- CHC - 10 Mile Loop Trail
- CHC - 15 Mile Loop Trail

Natchaug Forest Trails

- Blue - Natchaug Trail (Foot Travel Only)
- Blue/Yellow - CCC Trail (Foot Travel Only)
- Unmarked Trail

Goodwin Forest Trails

- Blue - Natchaug Trail
- Blue/White - Pine Acres Pond Trail
- Yellow - Brown Hill Marsh Trail
- Red - Governors's Island Trail
- Blue/Yellow - Goodwin Heritage Trail
- Blue/Red - Forest Discovery Trail
- Yellow/Red - Tamarack Loop
- Red/White - Red/White Loop
- Yellow/White - Yellow White Trail
- Orange - Orange Connector
- Unmarked Trail

- Natchaug Forest HQ
- Silvermine Horse Camp
- Fireplace & Chimney
- Backpack Campsite
- Viewing Platform
- Old Farm House Cellar Holes
- Cemetery
- Pedestrian Traffic Only
- Natchaug & Goodwin State Forest
- Nathaniel Lyon Memorial State Park

Map Date - March 24, 2016



Connecticut Department of Energy & Environmental Protection
Bureau of Outdoor Recreation
State Parks Division