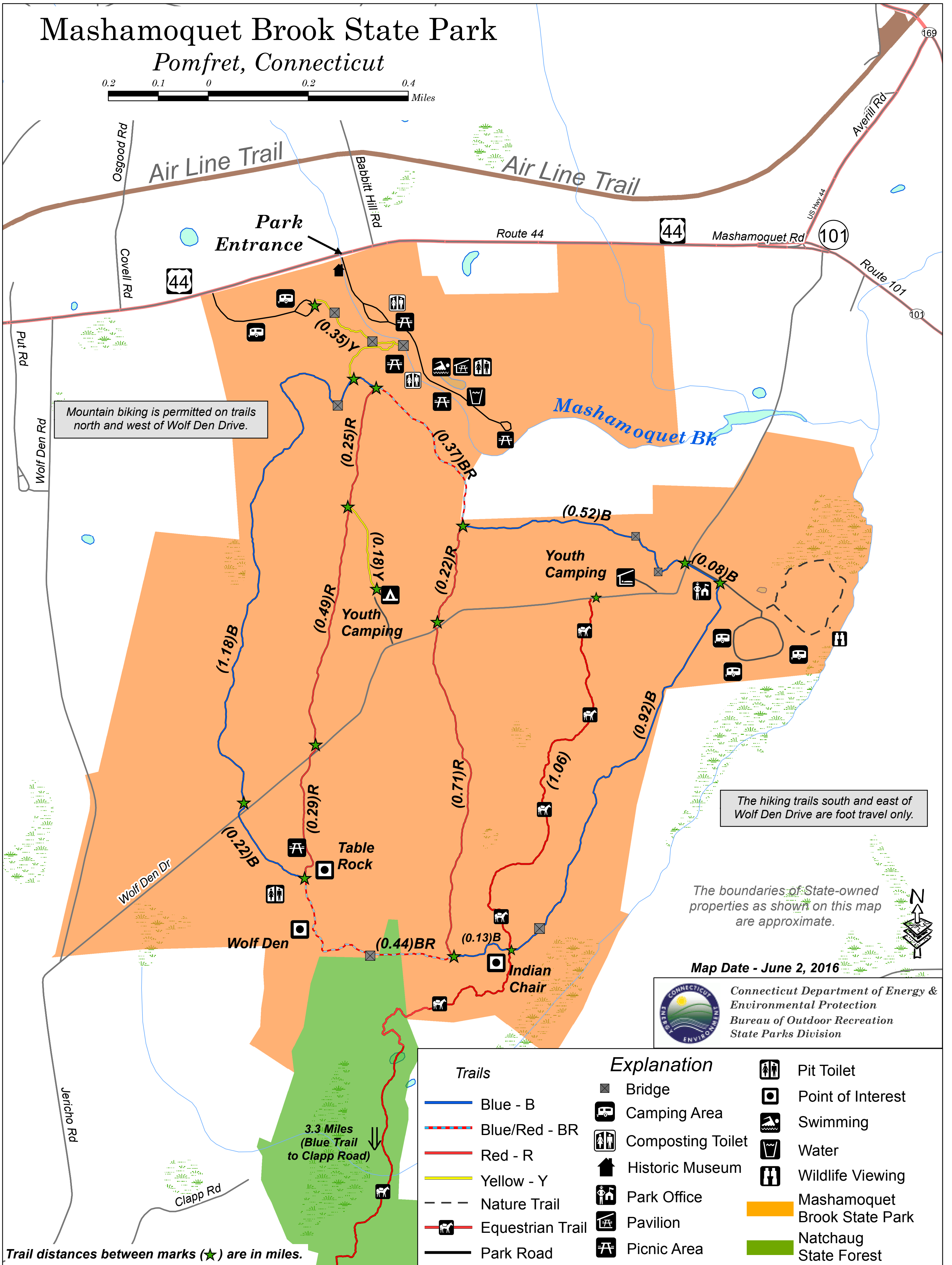


Mashamoquet Brook State Park

Pomfret, Connecticut



Mountain biking is permitted on trails north and west of Wolf Den Drive.

The hiking trails south and east of Wolf Den Drive are foot travel only.

The boundaries of State-owned properties as shown on this map are approximate.

Map Date - June 2, 2016



Connecticut Department of Energy & Environmental Protection
Bureau of Outdoor Recreation
State Parks Division

Trails		Explanation	
	Blue - B		Bridge
	Blue/Red - BR		Camping Area
	Red - R		Composting Toilet
	Yellow - Y		Historic Museum
	Nature Trail		Park Office
	Equestrian Trail		Pavilion
	Park Road		Picnic Area
			Pit Toilet
			Point of Interest
			Swimming
			Water
			Wildlife Viewing
			Mashamoquet Brook State Park
			Natchaug State Forest

Trail distances between marks (★) are in miles.

3.3 Miles
(Blue Trail to Clapp Road)