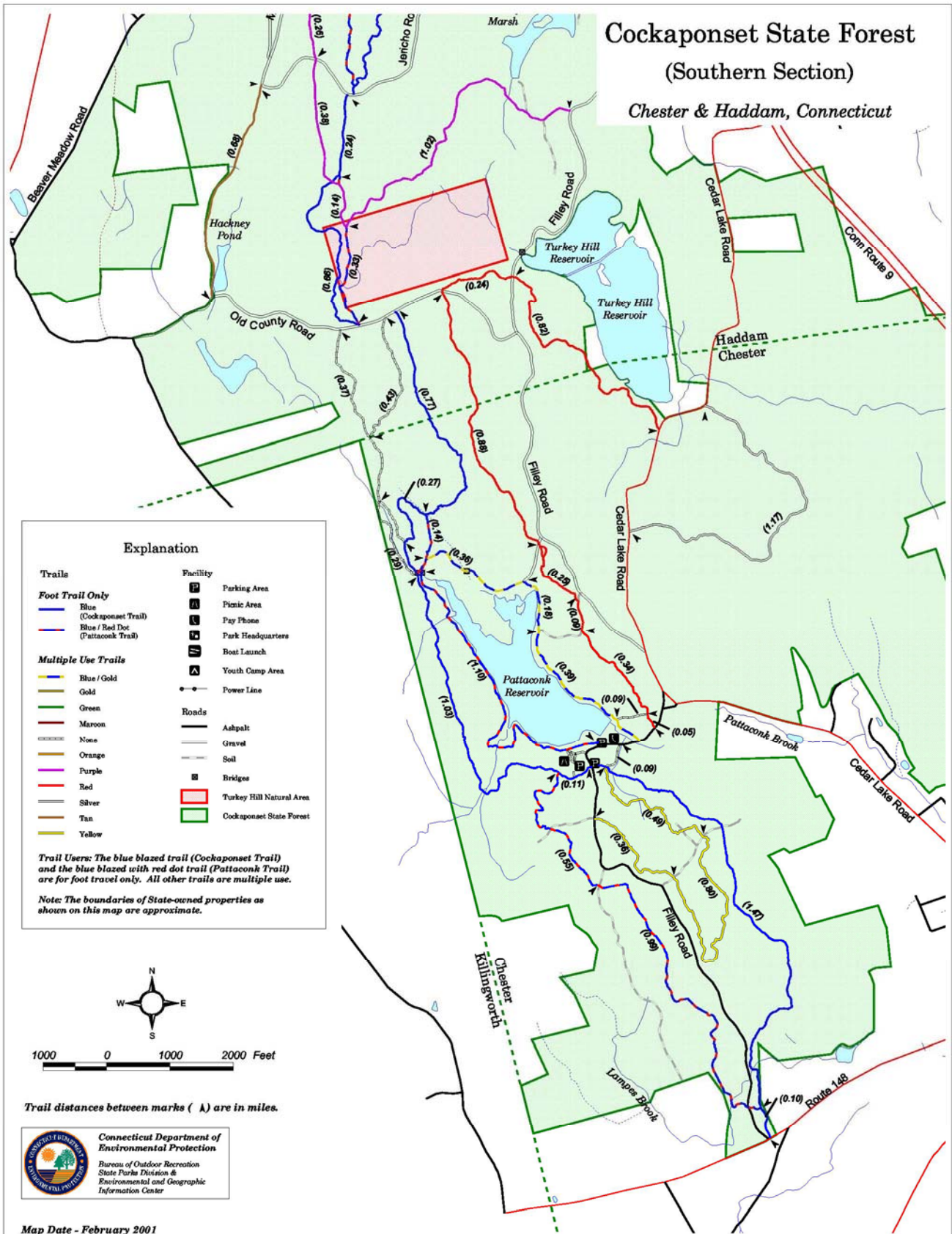


Cockaponset State Forest (Southern Section)

Chester & Haddam, Connecticut

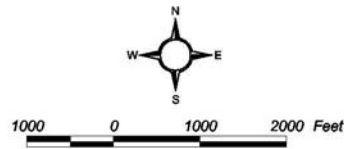


Explanation

- | | |
|---------------------------------|--------------------------|
| Trails | Facility |
| Foot Trail Only | Parking Area |
| Blue (Cockaponset Trail) | Picnic Area |
| Blue / Red Dot (Pataconk Trail) | Pay Phone |
| Multiple Use Trails | Park Headquarters |
| Blue / Gold | Boat Launch |
| Gold | Youth Camp Area |
| Green | Power Line |
| Maroon | Roads |
| Red | Asphalt |
| Orange | Gravel |
| Purple | Soil |
| Red | Bridges |
| Silver | Turkey Hill Natural Area |
| Tan | Cockaponset State Forest |
| Yellow | |

Trail Users: The blue blazed trail (Cockaponset Trail) and the blue blazed with red dot trail (Pataconk Trail) are for foot travel only. All other trails are multiple use.

Note: The boundaries of State-owned properties as shown on this map are approximate.



Trail distances between marks (A) are in miles.



Map Date - February 2001