

Modernizing the CT Solid Waste System





Sacyr Rooney Recovery Team

Local Partners



Evolution of Solid Waste Disposal



Landfilling



Mass Burning

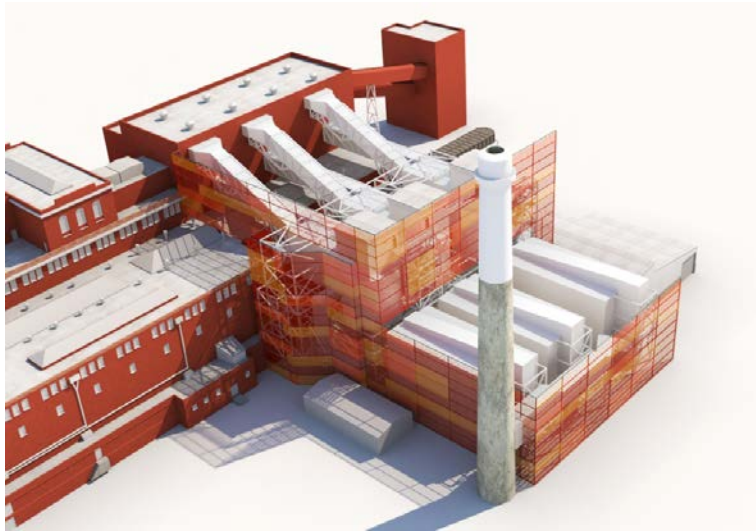


Recycling and
Recovering Material

Alternatives Considered

- Status Quo
- Shutdown & Transfer
- Full Gasification
- **The Sacyr Rooney Solution**

The Sacyr Rooney Vision



Positive economic impact.

State-of-the-art
environmental solutions.



Integration of the facility
into the Community.

Improve visibility from
I-91 and Wilbur Cross Highway



Our View of the Future

Benefits for the City throughout the Contract

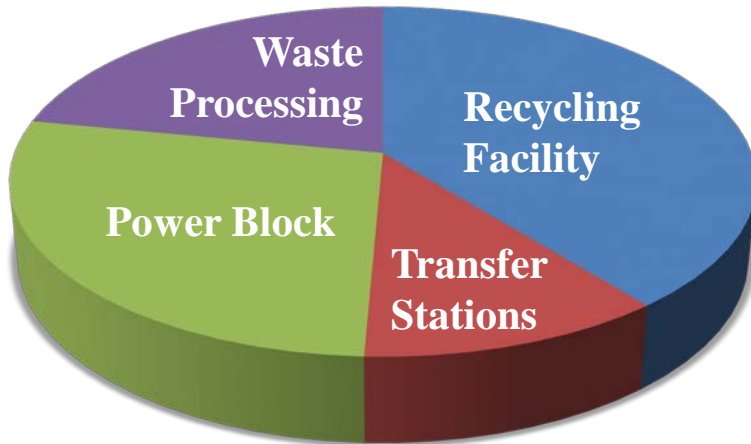
- Substantial yearly payment to the City.
- \$200 million initial investment in technology, architecture and landscaping.
- \$300 million expenditures in state-of-the-art technology.
- Stabilization of tipping fees.

**Economic
impact to the
Community.**

Economic Impact

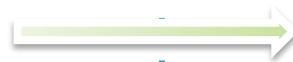
Current Situation

We maintain existing Jobs



219

Employees



Sacyr Rooney Proposal

Additional new jobs will be created

Total Direct Jobs		265
Indirect Jobs	Recycling Industry	112
	Organics industry	42
Temporary Construction Jobs		250

265

Employees

Environmental Solutions

**Cutting-edge
environmental
technology.**

- Increased Recycling
- Aerobic Digestion - Compost
- Anaerobic Digestion
- Clean Waste-to-Energy Tech

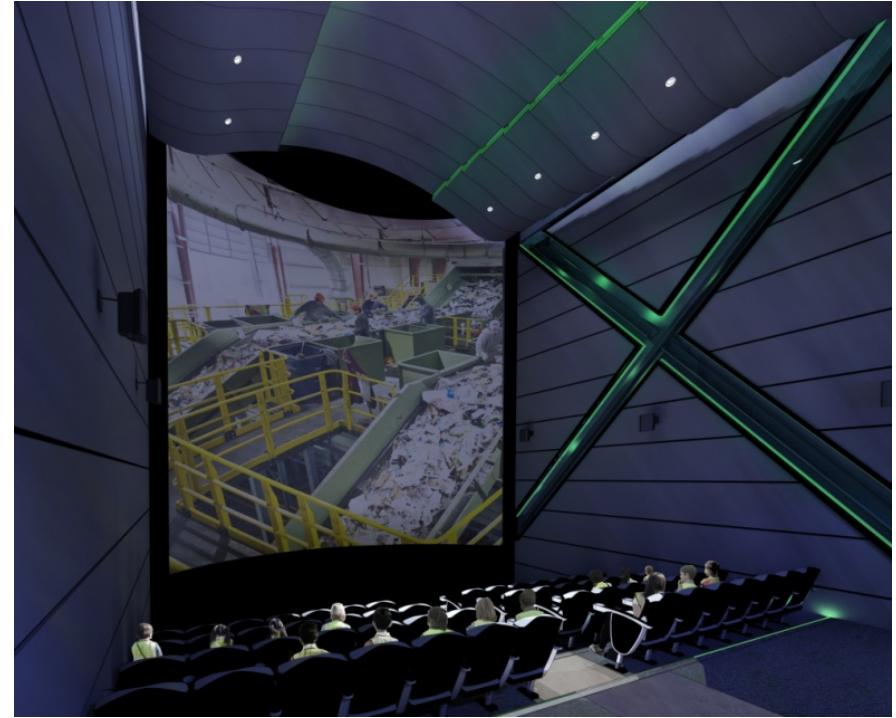
Community Involvement

- ❻ Restoration of existing spaces to create a unique and memorable experience for the community
- ❻ Visitor Center/ Educational Museum space in the north end of Power Block Facility
- ❻ Integration of Riverfront Recapture



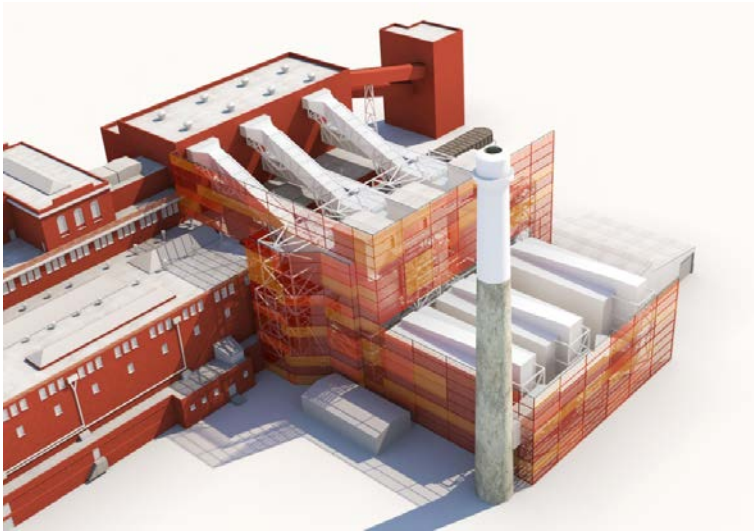
Community Involvement

- 🌱 The newly restored interiors will serve as an innovative recovery museum, that tells the story of the history and life of the plant.



- 🌱 Educational space to include multimedia experiences, facility tours, and environmental classrooms like none other.

Why Sacyr Rooney?



Positive economic impact.

State-of-the-art
environmental solutions.



Integration of the facility
into the Community.