

# Guilford Rodgers Bedrock Compilation Sheet (paper)

## Map

### NOTICE !

Bedrock quadrangle 1:24,000 scale compilation sheets for the Bedrock Geological Map of Connecticut, John Rodgers, 1985, Connecticut Geological and Natural History Survey, Department of Environmental Protection, Hartford, Connecticut, in Cooperation with the U.S. Geological Survey, 1:125,000 scale, 2 sheets. [minimum 116 paper quad compilations with mylar overlays constituting the master file set for geologic lines and units compiled to the State map, some quads have multiple sheets depicting iterations of mapping]. Compilations drafted by Nancy Davis, Craig Dietsch, and Nat Gibbons under the direction of John Rodgers.

Geologic unit designation table translates earlier map unit nomenclature to the units ultimately used in the State publication.

This map set contains unpublished maps, cross-sections, and related information archived by the State Geological and Natural History Survey of Connecticut as part of the Survey Library Collection.

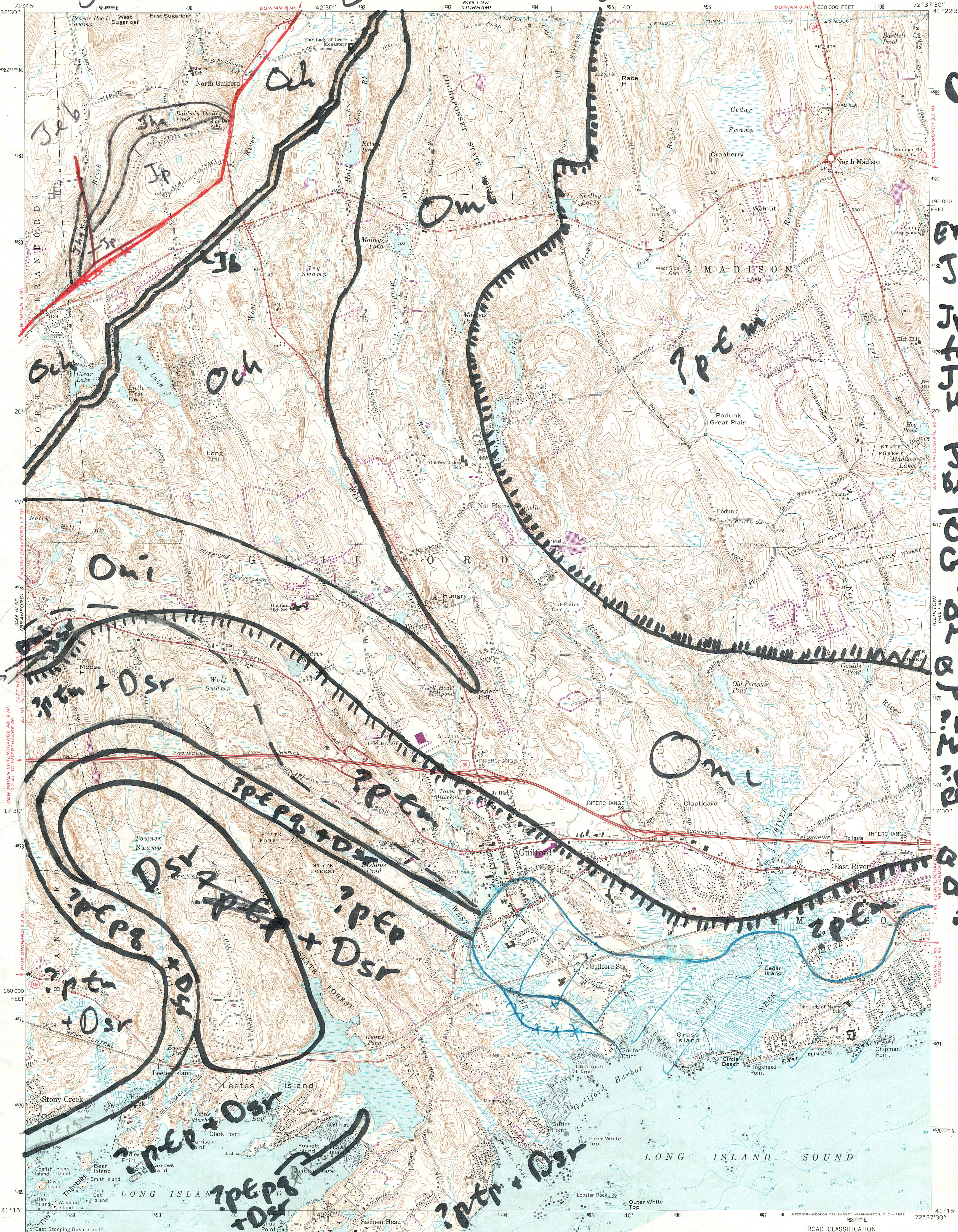
These materials have not been reviewed for accuracy, consistency, or completeness. For many geographic areas, more current information exists, either in published or unpublished form. These materials were developed under research and mapping agreements between the State Geological Survey and individual scientists, academic institutions, or graduate students. The veracity of the information contained within these documents is the responsibility of the authorship. The State Geological and Natural History Survey of Connecticut, does not promote or endorse this content, nor does the State Survey attest as to its level of accuracy.

These materials have been preserved under a cooperative agreement between the State Geological Survey and the US Geological Survey as part of the National Geological and Geophysical Data Preservation Program. [www.datapreservation.usgs.gov](http://www.datapreservation.usgs.gov)

These materials are offered in the spirit of open government. Reproduction of these manuscripts was conducted to the highest practical degree, within the parameters of the funding mechanism. Original documents are available for inspection by contacting the Connecticut State Geologist.



Interpretation in geology 393-7 July 1978



- Osr - Stony Creek fault
- Explanation
- Jb - butress
- Lehuta
- Jp - Podunk formation
- Jha - Hampton
- Dsals
- Job - East Berlin fm

---

- Och - Collins Hill fm.
- Omi - Middleton Q fm
- Jp + Jb - Marquise
- Jp + Jb - Plainfield fm.
- Jp + Jb - Quantock in Plainfield fm

NHt Masser uu. Jp + Jb + Osr

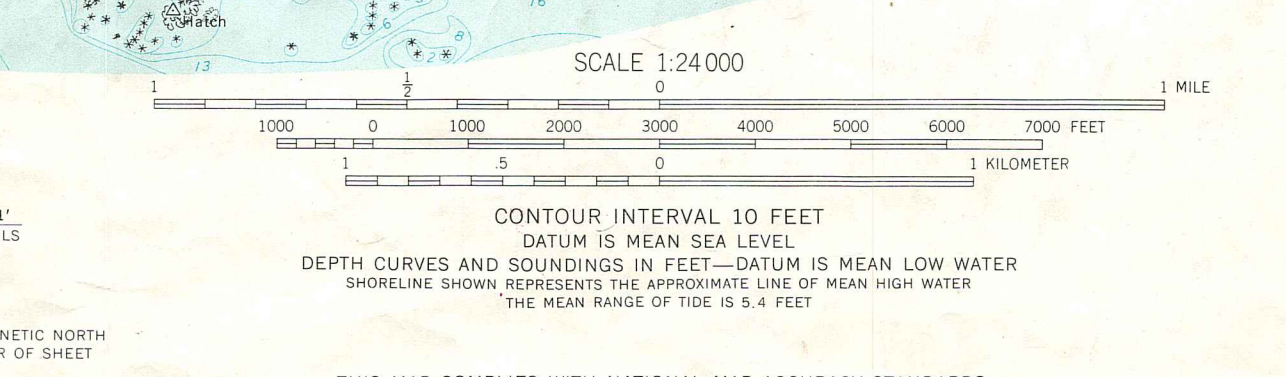
Mapped, edited, and published by the Geological Survey Control by USGS, USC&GS, and Connecticut Geodetic Survey

Topography by photogrammetric methods from aerial photographs taken 1949. Field checked 1954. Revised from aerial photographs taken 1966. Field checked 1968

Selected hydrographic data compiled from USC&GS Charts 217 (1962) and 216 (1965). This information is not intended for navigational purposes

Polyconic projection. 1927 North American datum 10,000-foot grid based on Connecticut coordinate system 1000-meter Universal Transverse Mercator grid ticks, zone 18, shown in blue

Fine red dashed lines indicate selected fence and field lines where generally visible on aerial photographs. This information is unchecked



**ROAD CLASSIFICATION**

Primary highway, all weather, hard surface \_\_\_\_\_  
 Light duty road, all weather, improved surface \_\_\_\_\_  
 Secondary highway, all weather, Unimproved road, fair or dry hard surface \_\_\_\_\_  
 Unimproved road, fair or dry weather \_\_\_\_\_

○ Interstate Route    □ U. S. Route    ○ State Route

Tilted Bedrock subsoil unknown

GUILFORD, CONN. N4115-W7237.5/7.5

1968 PHOTOREVISED 1972 AMS 6466 I SW-SERIES V816

(97)

