

# Woodbury Rodgers Bedrock Compilation Sheet 2 (paper)

## Map

## NOTICE !

Bedrock quadrangle 1:24,000 scale compilation sheets for the Bedrock Geological Map of Connecticut, John Rodgers, 1985, Connecticut Geological and Natural History Survey, Department of Environmental Protection, Hartford, Connecticut, in Cooperation with the U.S. Geological Survey, 1:125,000 scale, 2 sheets. [minimum 116 paper quad compilations with mylar overlays constituting the master file set for geologic lines and units compiled to the State map, some quads have multiple sheets depicting iterations of mapping]. Compilations drafted by Nancy Davis, Craig Dietsch, and Nat Gibbons under the direction of John Rodgers.

Geologic unit designation table translates earlier map unit nomenclature to the units ultimately used in the State publication.

This map set contains unpublished maps, cross-sections, and related information archived by the State Geological and Natural History Survey of Connecticut as part of the Survey Library Collection.

These materials have not been reviewed for accuracy, consistency, or completeness. For many geographic areas, more current information exists, either in published or unpublished form. These materials were developed under research and mapping agreements between the State Geological Survey and individual scientists, academic institutions, or graduate students. The veracity of the information contained within these documents is the responsibility of the authorship. The State Geological and Natural History Survey of Connecticut, does not promote or endorse this content, nor does the State Survey attest as to its level of accuracy.

These materials have been preserved under a cooperative agreement between the State Geological Survey and the US Geological Survey as part of the National Geological and Geophysical Data Preservation Program. [www.datapreservation.usgs.gov](http://www.datapreservation.usgs.gov)

These materials are offered in the spirit of open government. Reproduction of these manuscripts was conducted to the highest practical degree, within the parameters of the funding mechanism. Original documents are available for inspection by contacting the Connecticut State Geologist.



JUL 23 June 1975

Generalized dip & strikes of foliation etc.

UNITED STATES  
DEPARTMENT OF THE INTERIOR  
GEOLOGICAL SURVEY

EDWARD L. TROXELL, Director

WOODBURY QUADRANGLE  
CONNECTICUT  
7.5 MINUTE SERIES (TOPOGRAPHIC)  
SW 1/4 WATERBURY 15' QUADRANGLE

(THOMASTON)

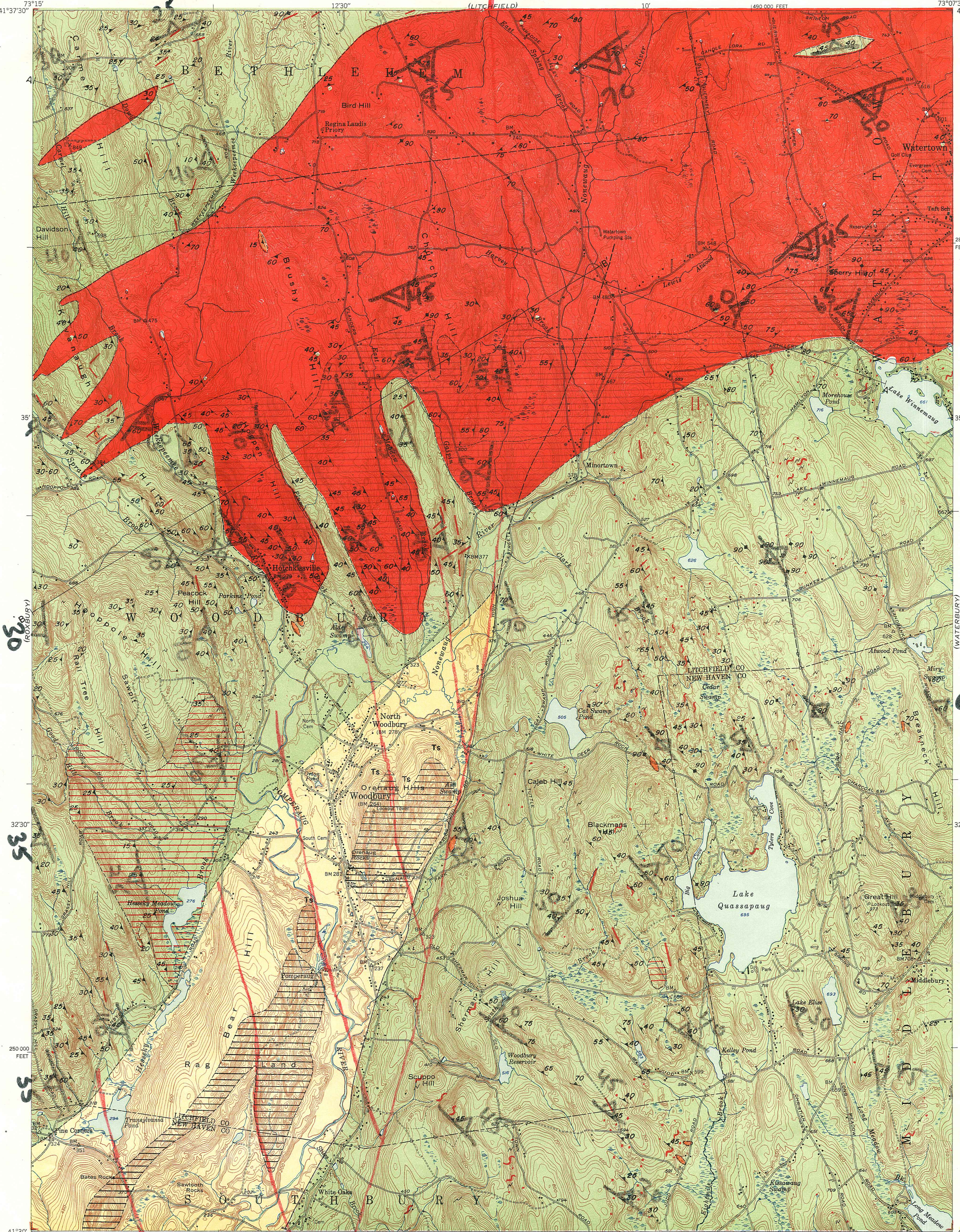
EXPLANATION

- Triassic Newark series. Dense, dark gray to black basalt lava flows, reddish brown on weathered surface. Some sandstone and conglomerate. Ts—Triassic sandstone and conglomerate outcrops.
- Triassic basalt outcrop area.
- Nonewaung granite. Fine to coarse-grained, massive or layered, soda granite containing large porphyritic crystals of graphic granite and plumes muscovite.
- Mixed granite and metasediments, mixed Nonewaung granite, pegmatite, and Hartland metasediments including many granitic gneisses.
- Nonewaung granite with Hartland inclusions or roof pendants.
- Mt. Tom hornblende gneiss. Dark green to black and white mottled gneisses containing hornblende, chlorite, and andesite with minor amounts of quartz, garnet, titanite, and magnetite.
- Hartland formation. Interbedded mica quartzites and mica quartz schists containing garnet, staurolite, and kyanite locally.
- Hartland granitic gneisses. Granitic gneisses composed of mica, quartz, and feldspar structurally related to Hartland formation.
- Hartland formation. Red dots indicate feldspathic material in small concentrations. Number of red dots indicates varying amounts of feldspathic material.
- Granite and pegmatite dikes and sills.
- Irregular masses of granite and pegmatite.
- Strike and dip of foliation or layering of Hartland formation or granite.
- Highly contorted foliation.
- Contacts and boundaries dashed where approximately located.
- Fault.
- Inferred fault.

GEOLOGIC MAP  
AND SECTIONS OF THE  
WOODBURY QUADRANGLE,  
CONNECTICUT

By  
Robert M. Gates

Geology mapped in 1948 and 1952.  
— 1953 —

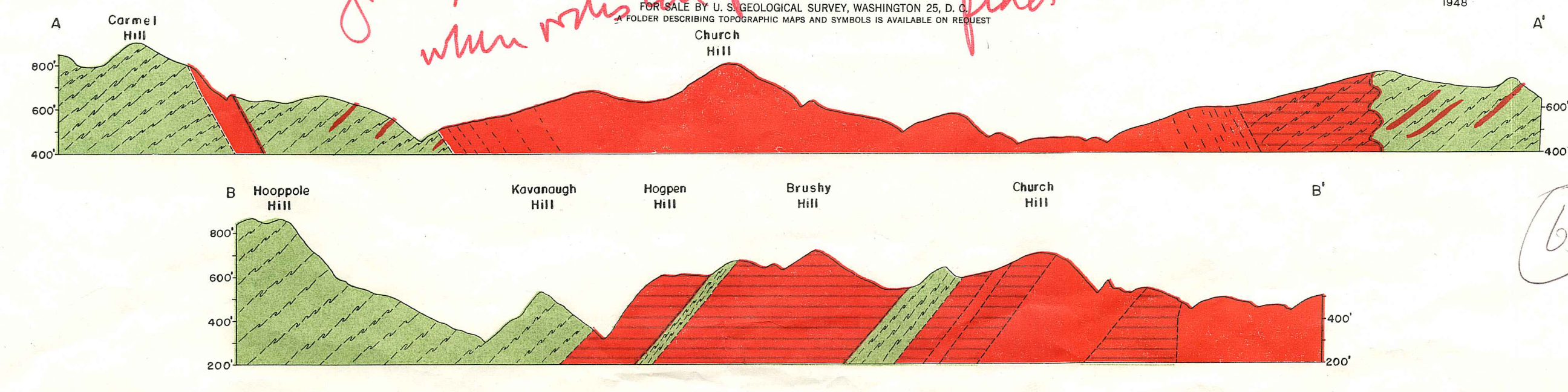


Mapped, edited, and published by the Geological Survey  
Control by USGS, USC&GS, and Connecticut Geologic Survey  
Topography from aerial photographs by multiplex methods  
Aerial photographs taken 1944. Field check 1948  
Polyconic projection. 1927 North American datum  
10,000-foot grid based on Connecticut coordinate system  
These marginal references refer to base map.  
Geological data overprinted by Connecticut  
Geological and Natural History Survey  
APPROXIMATE MEAN  
DECLINATION, 1948

Red lines in dikes  
zones, 100 to 1000 meters wide,  
when rocks are probably & cersivoids  
fractured

ROAD CLASSIFICATION  
HARD-SURFACE ALL WEATHER ROADS DRY WEATHER ROADS  
Heavy-duty Improved dirt  
Medium-duty Unimproved dirt  
Loose-surface, graded, or narrow hard-surface  
U. S. Route State Route

WOODBURY, CONN.  
SW 1/4 WATERBURY 15' QUADRANGLE  
N4130-W7307.5/7.5  
1948



A 45  
Generalized  
dip & strikes  
of mt. tom  
foliation  
& vertical  
foliation

Also  
Generalized  
dip & strikes  
of "layering"  
in peg  
matite  
granite

63