

South Sandisfield Rodgers Bedrock Compilation Sheet 2 (paper)

Map

NOTICE !

Bedrock quadrangle 1:24,000 scale compilation sheets for the Bedrock Geological Map of Connecticut, John Rodgers, 1985, Connecticut Geological and Natural History Survey, Department of Environmental Protection, Hartford, Connecticut, in Cooperation with the U.S. Geological Survey, 1:125,000 scale, 2 sheets. [minimum 116 paper quad compilations with mylar overlays constituting the master file set for geologic lines and units compiled to the State map, some quads have multiple sheets depicting iterations of mapping]. Compilations drafted by Nancy Davis, Craig Dietsch, and Nat Gibbons under the direction of John Rodgers.

Geologic unit designation table translates earlier map unit nomenclature to the units ultimately used in the State publication.

This map set contains unpublished maps, cross-sections, and related information archived by the State Geological and Natural History Survey of Connecticut as part of the Survey Library Collection.

These materials have not been reviewed for accuracy, consistency, or completeness. For many geographic areas, more current information exists, either in published or unpublished form. These materials were developed under research and mapping agreements between the State Geological Survey and individual scientists, academic institutions, or graduate students. The veracity of the information contained within these documents is the responsibility of the authorship. The State Geological and Natural History Survey of Connecticut, does not promote or endorse this content, nor does the State Survey attest as to its level of accuracy.

These materials have been preserved under a cooperative agreement between the State Geological Survey and the US Geological Survey as part of the National Geological and Geophysical Data Preservation Program. www.datapreservation.usgs.gov

These materials are offered in the spirit of open government. Reproduction of these manuscripts was conducted to the highest practical degree, within the parameters of the funding mechanism. Original documents are available for inspection by contacting the Connecticut State Geologist.

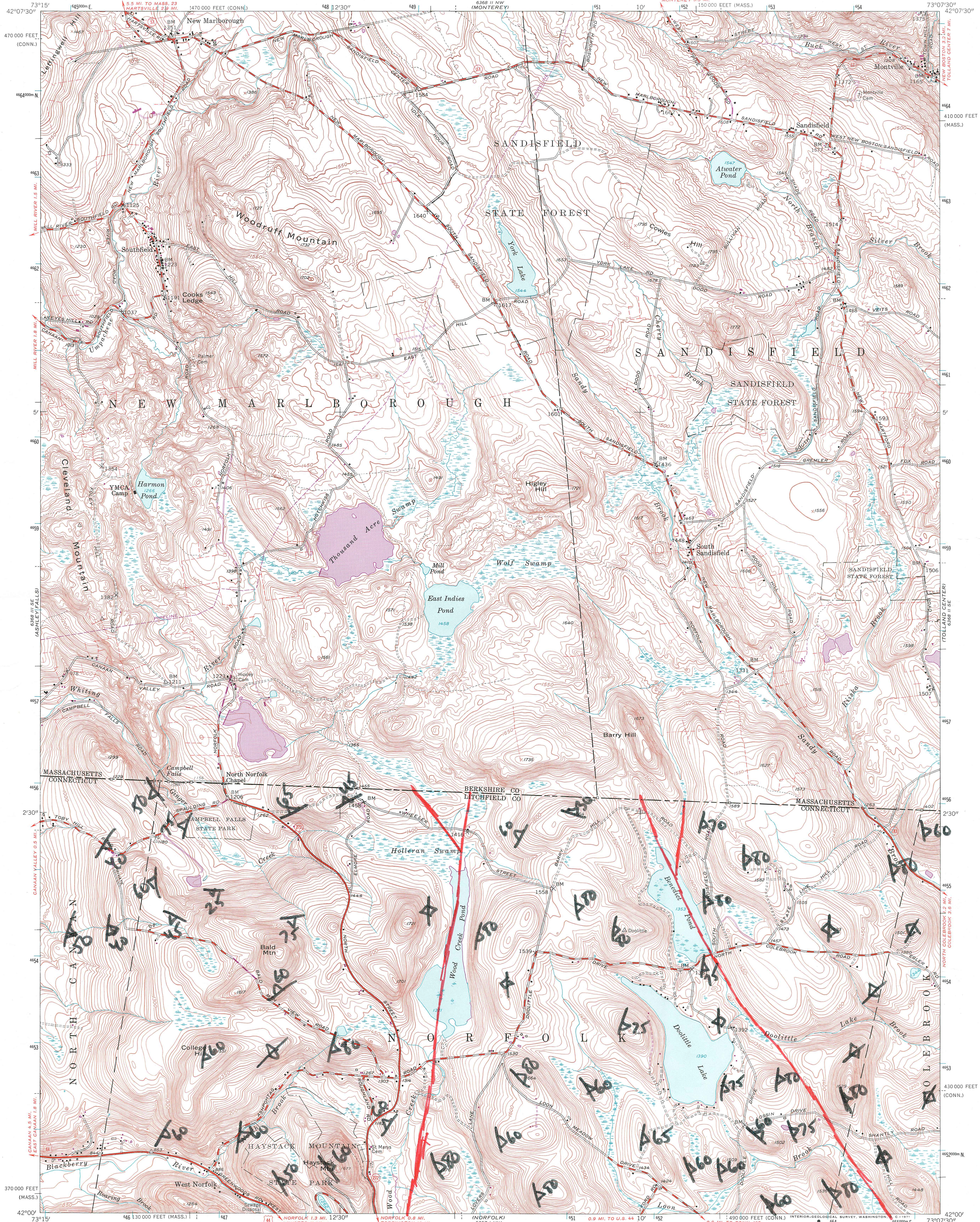
JM Stratton 4 July 1977

UNITED STATES
DEPARTMENT OF THE INTERIOR
GEOLOGICAL SURVEY

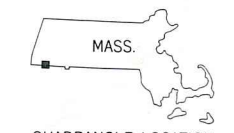
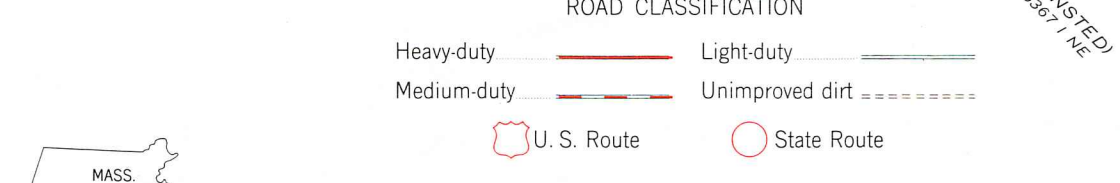
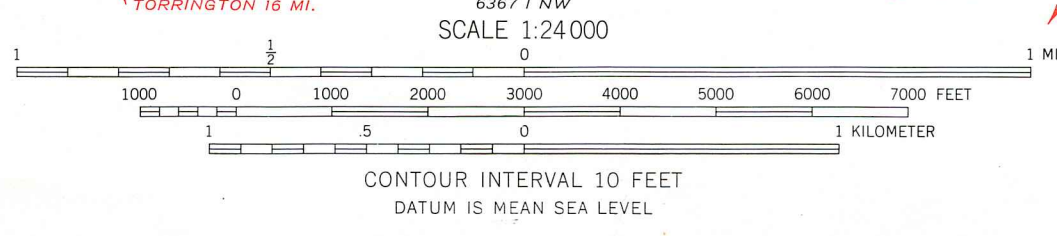
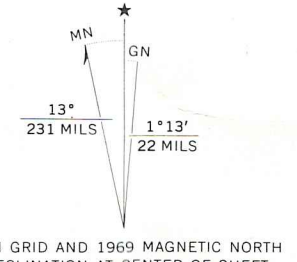
STATE OF MASSACHUSETTS
DEPARTMENT OF PUBLIC WORKS

STATE OF CONNECTICUT
HIGHWAY DEPARTMENT

SOUTH SANDISFIELD QUADRANGLE
MASSACHUSETTS-CONNECTICUT
7.5 MINUTE SERIES (TOPOGRAPHIC)



Mapped, edited, and published by the Geological Survey
Control by USGS, USC&GS, Massachusetts Land and Harbor
Commission, Massachusetts Geodetic Survey, and Connecticut
Geodetic Survey.
Topography in Connecticut by planetable surveys 1944
Topography in Massachusetts from aerial photographs by
photogrammetric methods. Aerial photographs taken 1942
Field check 1946. Revised 1958
Polyconic projection. 1927 North American datum
10,000-foot grids based on Massachusetts coordinate system,
mainland zone, and Connecticut coordinate system
1000-meter Universal Transverse Mercator grid ticks,
zone 18, shown in blue
Fine red dashed lines indicate selected fence and field lines
visible on aerial photographs. This information is unchecked



SOUTH SANDISFIELD, MASS.-CONN.
N4200-W7307.5/7.5
1958
PHOTOREVISED 1969
AMS 6388 II SW-SERIES V814

THIS MAP COMPLIES WITH NATIONAL MAP ACCURACY STANDARDS
FOR SALE BY U.S. GEOLOGICAL SURVEY, WASHINGTON, D.C. 20242
A FOLDER DESCRIBING TOPOGRAPHIC MAPS AND SYMBOLS IS AVAILABLE ON REQUEST

Revisions shown in purple compiled in cooperation with
Connecticut Highway Department from aerial photographs taken 1969
This information not field checked

3