

Webster Rodgers Bedrock Compilation Sheet (paper)

Map

NOTICE !

Bedrock quadrangle 1:24,000 scale compilation sheets for the Bedrock Geological Map of Connecticut, John Rodgers, 1985, Connecticut Geological and Natural History Survey, Department of Environmental Protection, Hartford, Connecticut, in Cooperation with the U.S. Geological Survey, 1:125,000 scale, 2 sheets. [minimum 116 paper quad compilations with mylar overlays constituting the master file set for geologic lines and units compiled to the State map, some quads have multiple sheets depicting iterations of mapping]. Compilations drafted by Nancy Davis, Craig Dietsch, and Nat Gibbons under the direction of John Rodgers.

Geologic unit designation table translates earlier map unit nomenclature to the units ultimately used in the State publication.

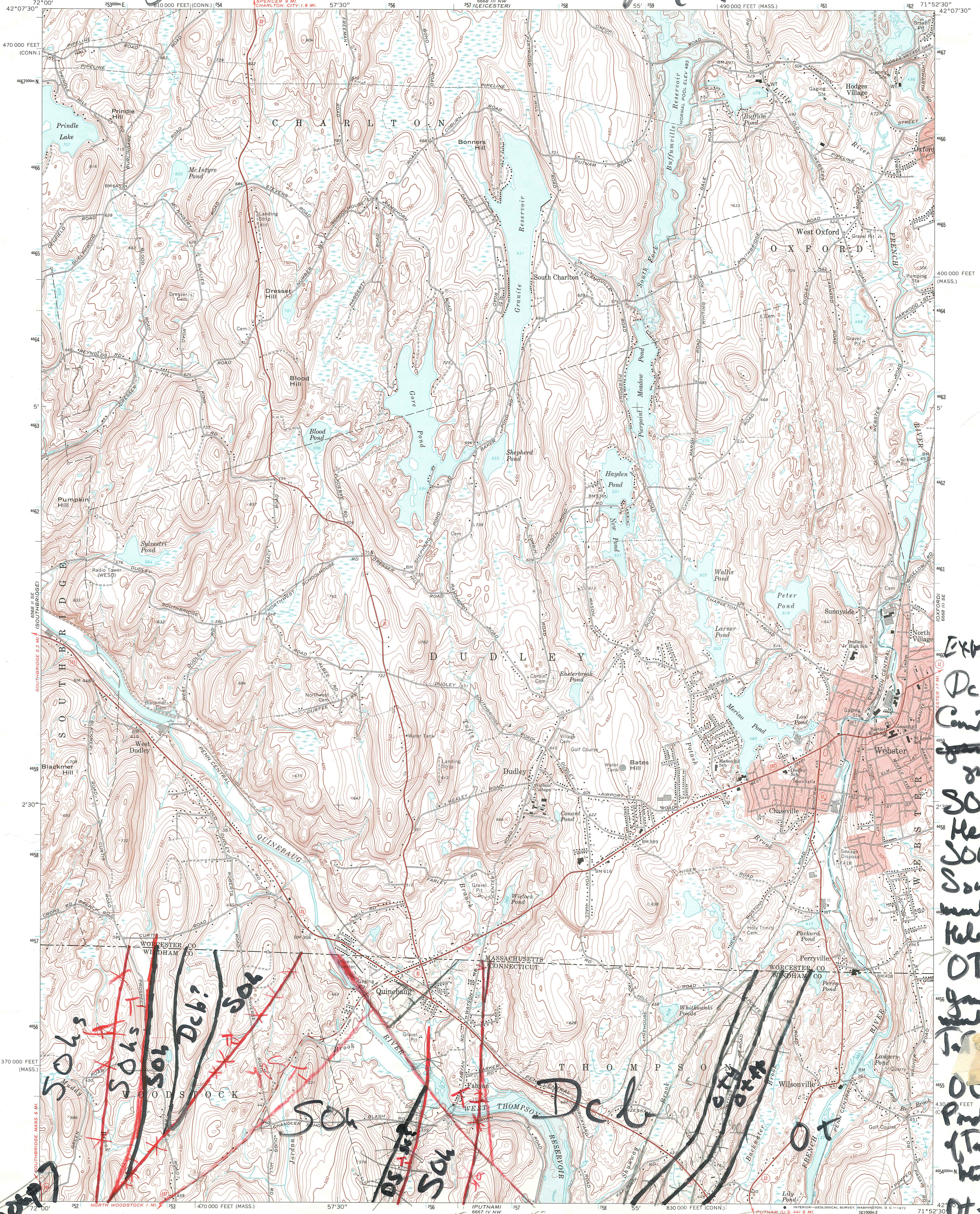
This map set contains unpublished maps, cross-sections, and related information archived by the State Geological and Natural History Survey of Connecticut as part of the Survey Library Collection.

These materials have not been reviewed for accuracy, consistency, or completeness. For many geographic areas, more current information exists, either in published or unpublished form. These materials were developed under research and mapping agreements between the State Geological Survey and individual scientists, academic institutions, or graduate students. The veracity of the information contained within these documents is the responsibility of the authorship. The State Geological and Natural History Survey of Connecticut, does not promote or endorse this content, nor does the State Survey attest as to its level of accuracy.

These materials have been preserved under a cooperative agreement between the State Geological Survey and the US Geological Survey as part of the National Geological and Geophysical Data Preservation Program. www.datapreservation.usgs.gov

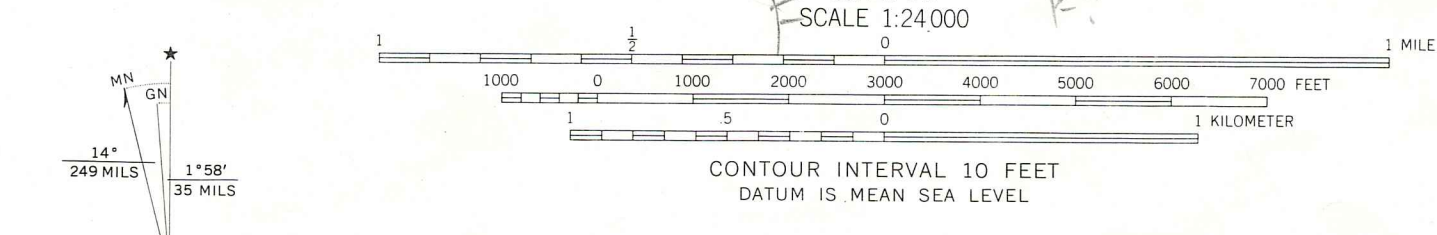
These materials are offered in the spirit of open government. Reproduction of these manuscripts was conducted to the highest practical degree, within the parameters of the funding mechanism. Original documents are available for inspection by contacting the Connecticut State Geologist.

Interpretation of geology - 20 July 1958



Explanation
 Dcb -
 Contact between
 granite
 gneiss
 SOh -
 Hebron fm.
 SOls -
 Southbridge
 member of
 Hebron fm.
 OTy -
 gneiss
 member of
 Taconic belt
 Orp Fly
 Pond member
 of Taconic
 belt fm
 Ot - Taconic
 Mt. fm.

Mapped, edited, and published by the Geological Survey
 Control by USGS, USC&GS, and Massachusetts Geodetic Survey
 Topography by planetable surveys 1942-1943. Revised from aerial
 photographs taken 1966. Field checked 1969
 Polyconic projection, 1927 North American datum
 10,000-foot grids based on Massachusetts coordinate system,
 mainland zone, and Connecticut coordinate system
 1000-meter Universal Transverse Mercator grid ticks,
 zone 19, shown in blue
 Fine red dashed lines indicate selected fence and field lines where
 generally visible on aerial photographs. This information is unchecked
 Red tint indicates areas in which only landmark buildings are shown
 Areas covered by dashed light-blue pattern
 are subject to controlled inundation



THIS MAP COMPLIES WITH NATIONAL MAP ACCURACY STANDARDS
 FOR SALE BY U.S. GEOLOGICAL SURVEY, WASHINGTON, D.C. 20242
 A FOLDER DESCRIBING TOPOGRAPHIC MAPS AND SYMBOLS IS AVAILABLE ON REQUEST

ROAD CLASSIFICATION
 Primary highway, all weather, hard surface
 Secondary highway, all weather, improved surface
 Light duty road, all weather, unimproved surface
 Fair or dry hard surface
 State Road
 MASS
 QUADRANGLE NO. 6667 IV NW
 WEBSTER, MASS.-CONN.
 6667 IV NW
 1969
 AMS 6667 III SW-SERIES V814